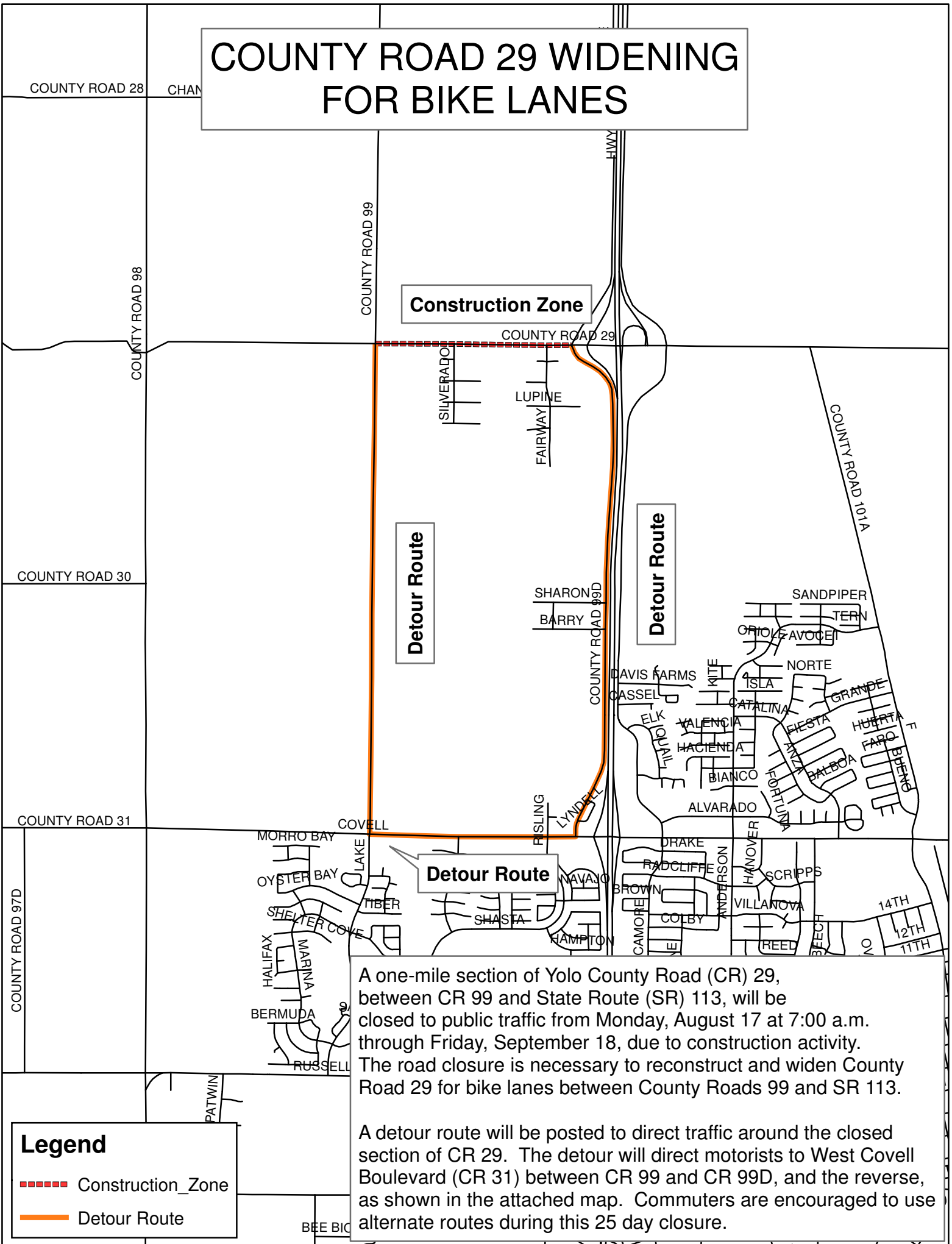


COUNTY ROAD 29 WIDENING FOR BIKE LANES



Construction Zone

Detour Route

Detour Route

Detour Route

A one-mile section of Yolo County Road (CR) 29, between CR 99 and State Route (SR) 113, will be closed to public traffic from Monday, August 17 at 7:00 a.m. through Friday, September 18, due to construction activity. The road closure is necessary to reconstruct and widen County Road 29 for bike lanes between County Roads 99 and SR 113.

A detour route will be posted to direct traffic around the closed section of CR 29. The detour will direct motorists to West Covell Boulevard (CR 31) between CR 99 and CR 99D, and the reverse, as shown in the attached map. Commuters are encouraged to use alternate routes during this 25 day closure.

Legend

- - - - - Construction_Zone
- Detour Route