



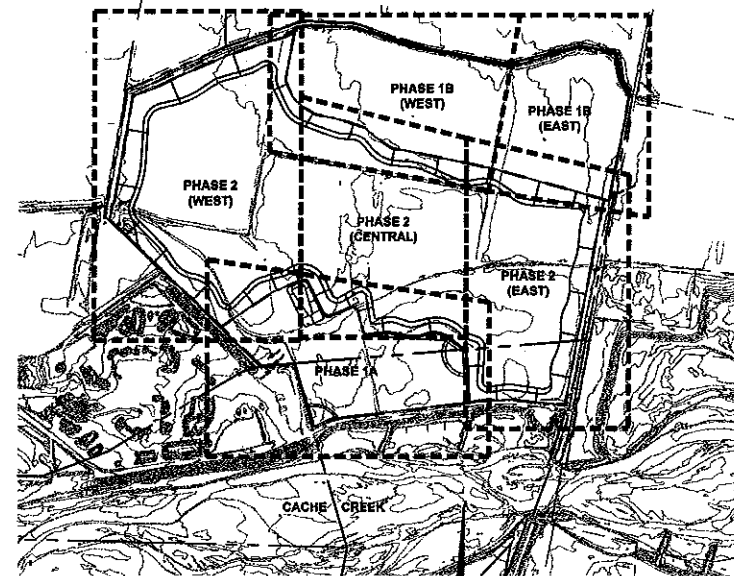
OFF-CHANNEL RECLAMATION PLAN

ESPARTO PLANT, YOLO COUNTY CALIFORNIA

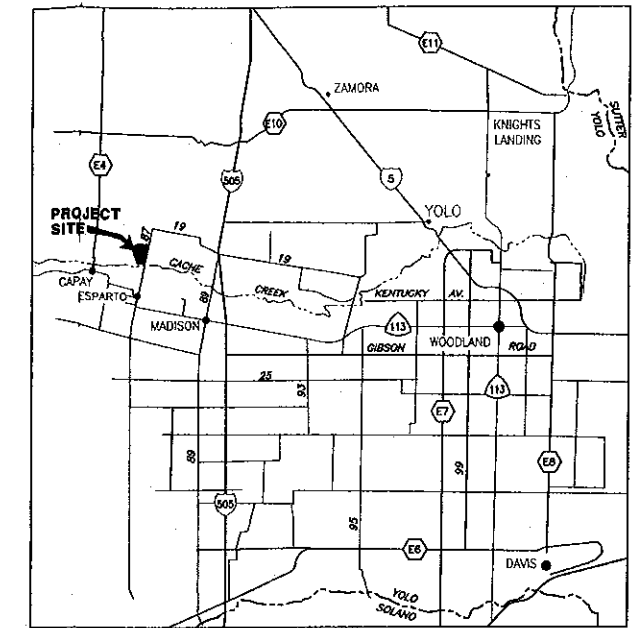
OCTOBER 2007

GENERAL NOTES:

1. ALL WORK SHALL CONFORM TO THE YOLO COUNTY OFF-CHANNEL MINING ORDINANCE, THE PROJECT SPECIFIC CONDITIONS OF APPROVAL, THE PROJECT STORM WATER POLLUTION PREVENTION PLAN (SWPPP), THE SURFACE MINING AND RECLAMATION ACT (SMARA), OSHA, MSHA, AND OTHER APPLICABLE LOCAL, STATE AND FEDERAL REGULATIONS.
2. EXISTING TOPOGRAPHY BASED ON AERIAL TOPOGRAPHY FLOWN MAY 2007; VERIFY EXISTING CONDITIONS PRIOR TO COMMENCING MINING.
3. ANY WORK THAT NEEDS TO BE PERFORMED WITHIN PG&E'S OR ANY OTHER UTILITY COMPANY'S EASEMENT WILL REQUIRE A CONSENT AGREEMENT FROM THE APPROPRIATE UTILITY COMPANY. USE CAUTION WHEN OPERATING ANY VEHICLES OR EQUIPMENT NEAR OVERHEAD AND UNDERGROUND ELECTRIC FACILITIES. COMPLY WITH ALL CONDITIONS LISTED IN THE CONSENT AGREEMENT.
4. THE DEPTH OF MINING AND THE LIMIT-OF-MINING LINES ARE ONLY APPROXIMATE, AND ARE SUBJECT TO CHANGE BASED ON THE AMOUNT AND QUALITY OF MATERIAL UNCOVERED, AND THE ABILITY OF THE PRODUCER TO MEET THE RECLAMATION REQUIREMENTS. THE FORESEEABLE ESTIMATE OF VARIATION IS +/- 10' IN MINING DEPTH; AND +/- 20% OF AREA FOR EACH TYPE OF RECLAMATION.
5. RECLAMATION INFORMATION SHOWN ON THESE PLANS IS FOR LAYOUT PURPOSES ONLY. REFER TO AGRICULTURE AND BIOLOGICAL RECLAMATION PLANS FOR ADDITIONAL DETAILS.
6. HIGH AND LOW AVERAGE GROUNDWATER ELEVATIONS BASED ON GROUNDWATER MAPS BY WALLACE KUHIL AND ASSOCIATES, INC. DATED JULY 2007.
7. MAXIMUM INCLINATION OF MINING AND RECLAMATION SLOPES ABOVE AN ELEVATION OF 5' BELOW SUMMER LOW GROUNDWATER LEVEL TO BE 2:1 (H:V). SLOPES LOCATED BELOW THIS 2:1 INCLINATION REQUIREMENT ZONE MAY BE INCLINED AT A MAXIMUM OF 1.5:1 (H:V) EXCEPT ON SLOPES ADJACENT TO THE ADAMS CANAL AND COUNTY ROAD 87.
8. ADJACENT TO ADAMS CANAL, THE MAXIMUM INCLINATION OF MINING AND RECLAMATION SLOPES ABOVE AN ELEVATION OF 5' BELOW THE SUMMER LOW GROUNDWATER LEVEL TO BE 3:1 (H:V). SLOPES LOCATED BELOW THIS 3:1 INCLINATION REQUIREMENT ZONE MAY BE INCLINED AT A MAXIMUM OF 1.5:1 (H:V).
9. ADJACENT TO COUNTY ROAD 87, THE MAXIMUM INCLINATION OF MINING SLOPES TO BE 2:1(H:V).
10. PROVIDE PROTECTION TO WET PIT AREAS FROM STORMWATER AND/OR AGRICULTURAL RUNOFF THROUGH THE PLACEMENT OF BERMS AND/OR SWALES AS INDICATED ON THESE DRAWINGS. (THIS NOTE MAY NOT APPLY OR BE REQUIRED IF EXISTING TOPOGRAPHY PREVENTS SURFACE RUNOFF FROM ENTERING ANY OF THE MINING EXCAVATIONS THAT EXPOSE GROUNDWATER.)
11. HYDRAULIC INFORMATION SHOWN ON THESE PLANS BASED ON AN UPDATED HYDRAULIC REPORT PREPARED BY CUNNINGHAM ENGINEERING OCTOBER 2007.
12. THE GRADING OF FINAL SLOPES, THE REPLACEMENT OF SOIL, AND ASSOCIATED EROSION CONTROL MEASURES SHALL TAKE PLACE PRIOR TO NOVEMBER 1 IN AREAS WHERE MINING HAS BEEN COMPLETED. TO MINIMIZE EROSION, ALL SLOPES ABOVE THE GROUNDWATER LEVEL SHALL BE SEEDED WITH A DROUGHT-TOLERANT MIX OF NATIVE AND NON-NATIVE GRASS SPECIES, AS SOON AS IS PRACTICAL AFTER GRADING AND PRIOR TO NOVEMBER 1. THE GRASS SEED MIX SHALL BE WEED FREE.



KEY MAP
1"=800'



VICINITY MAP
NTS

ABBREVIATIONS:

AC	ACRES
AG	AGRICULTURAL
AGG	AGGREGATE
APN	ASSESSOR'S PARCEL NUMBER
AVG	AVERAGE
CCRMP	CACHE CREEK RESOURCE MANAGEMENT PLAN
CFR	CODE OF FEDERAL REGULATIONS
CL	CENTER LINE
CMP	CORRUGATED METAL PIPE
CY	CUBIC YARDS
E	EAST
ELEV	ELEVATION
FG	FINISH GRADE
FL	FLOW LINE
FT	FEET
GB	GRADE BREAK
GW	GROUND WATER
H	HORIZONTAL
IRR	IRRIGATION
MSHA	MINES SAFETY AND HEALTH ADMINISTRATION
MW	MONITOR WELL
N	NORTH
NO.	NUMBER
OG	ORIGINAL GROUND ELEVATION
OSHA	OCCUPATIONAL SAFETY AND HEALTH ADMINISTRATION
PC	POINT OF CURVATURE
PRC	POINT OF REVERSE CURVATURE
PL	PROPERTY LINE
PVMT	PAVEMENT
R	RADIUS
R/W	RIGHT-OF-WAY
RECL.	RECLAMATION
S	SLOPE
STL	STEEL
S&G	SAND AND GRAVEL
TYP	TYPICAL
V	VERTICAL
W	WEST
W/	WITH
YR	YEAR

BENCHMARK:

EXISTING TOPOGRAPHY BASED ON AERIAL TOPOGRAPHY FLOWN MAY 2007 PROVIDED BY STEWART GEOTECHNOLOGIES VIA YOLO COUNTY AND INFORMATION PROVIDED BY GRANITE CONSTRUCTION COMPANY ON AUGUST 16, 2007. HORIZONTAL AND VERTICAL CONTROL FOR THE AERIAL TOPOGRAPHY IS BASED ON A CONTROL NETWORK TIED BY ANDREGG, INCORPORATED TO A NETWORK OF PUBLISHED BENCHMARKS. THE VERTICAL DATUM IS NGVD29.

LEGEND:

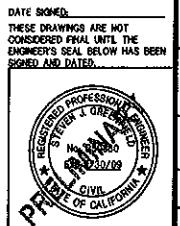
HORIZ. VERT. CONTROL	△	EXISTING ELEV.	▽ 175.0
HORIZONTAL CONTROL	△	PROPOSED ELEV.	▽ 180
VERTICAL CONTROL	○	HORIZONTAL TO VERTICAL SLOPE	2:1
BENCHMARK	⊕	TEST BORINGS	X #1, CF00-1
POWER POLE	+	EXISTING PROPERTY LINE	—
CONCRETE OR BUILDING	▭	EXISTING EASEMENT LINE	- - -
DIRT ROAD	—	HIGH GROUND WATER ELEV.	175 GW
PAVED ROAD	—	LOW GROUND WATER ELEV.	(168 GW)
FENCE	—	PROPOSED PHASE LINE	—
TREES	—	TEST 3 LINE	—
GROUND COVER	—	PROPOSED BERM	—
WATER	—	SLOPE	—
EXISTING GROUND CONTOUR	—	TOP OF SLOPE	—
PROPOSED MINING DEPTH CONTOUR	—	GRADE BREAK	—
PREDICTED 100 YR. FLOOD LINE (SEE HYDRAULIC REPORT OCTOBER 2007)	—	TOE OF SLOPE	—
MONITOR WELL AND ELEVATION	⊕ MW1 ELEV. 176.0	CROSS SECTION NUMBER	①
WELL AND ELEVATION	⊕ WELL ELEV. 176.0	STREAMBANK STABILIZATION PROJECT (PER CCRMP)	—
ANTICIPATED HIGH/ LOW LAKE SURFACE	▨		

INDEX TO SHEETS:

1. VICINITY MAP, LEGEND, ABBREVIATIONS, INDEX AND GENERAL NOTES
2. OVERALL MINING SITE PLAN
3. RECLAMATION PLAN - PHASE 1A
4. RECLAMATION PLAN - PHASE 1B (WEST)
5. RECLAMATION PLAN - PHASE 1B (EAST)
6. RECLAMATION PLAN - PHASE 2 (WEST)
7. RECLAMATION PLAN - PHASE 2 (CENTRAL)
8. RECLAMATION PLAN - PHASE 2 (EAST)
9. RECLAMATION PLAN CROSS SECTIONS
10. RECLAMATION PLAN CROSS SECTIONS
11. RECLAMATION PLAN CROSS SECTIONS
12. RECLAMATION PLAN CROSS SECTIONS
13. RECLAMATION PLAN CROSS SECTIONS

DRAWING STATUS:

- PLAN REVIEW SET
- PERMIT SET

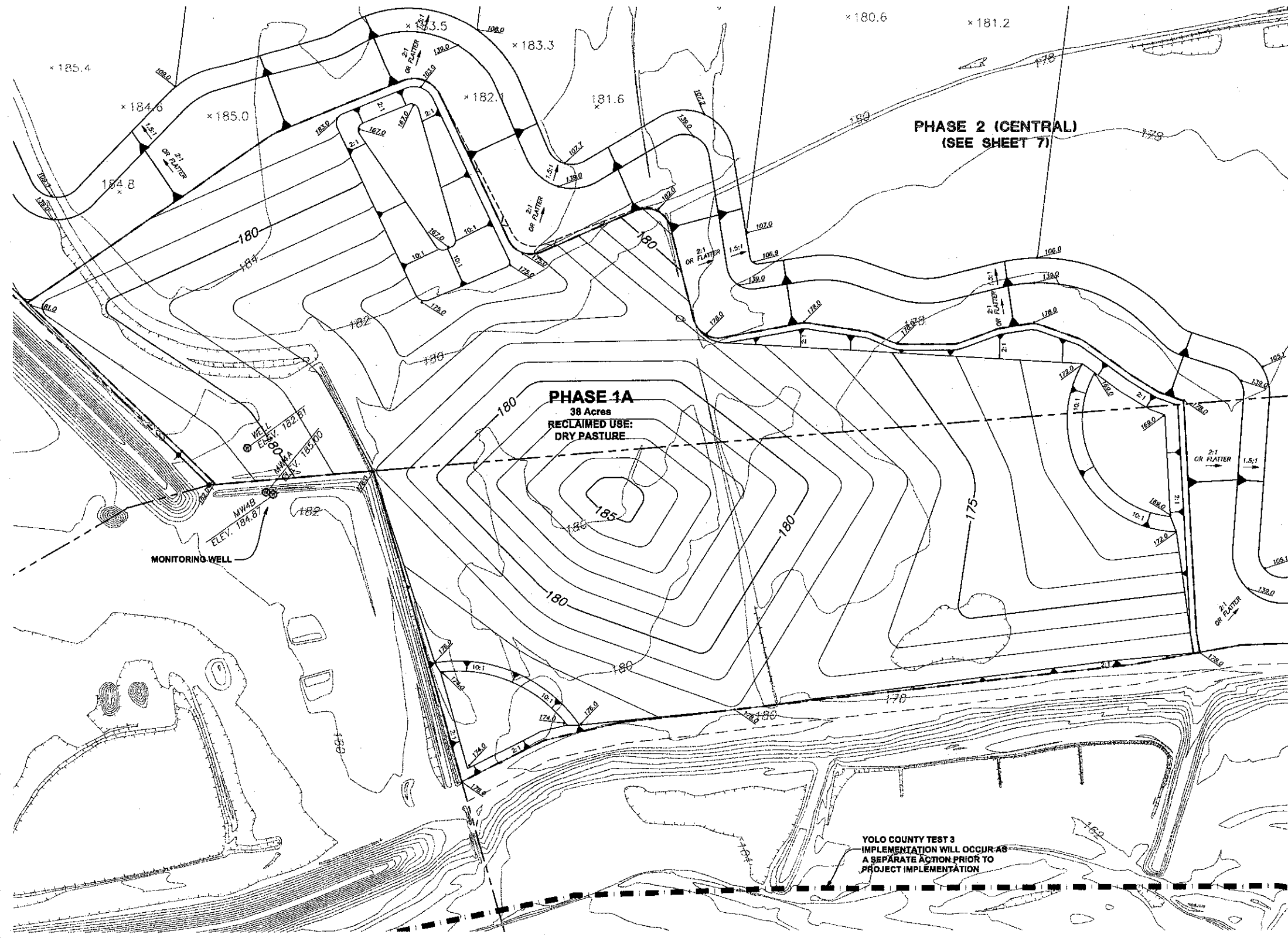


DESIGNED BY: N.C.	DRAWN BY: S.M.	CHECKED BY: S.G.	SCALE:	AS NOTED
APPR.:	BY:	REVISIONS:	DATE:	NO.:
GRANITE CONSTRUCTION RECLAMATION PLAN VICINITY MAP, LEGEND, ABBREVIATIONS, INDEX AND GENERAL NOTES				
Project Planning • Civil Engineering • Landscape Architecture 220 20th Street, Suite 200 Sacramento, CA 95818 (916) 455-2026				
SHEET 1 OF 13 DATE: 10/12/07 JOB NO: 963.02				

**PHASE 2 (WEST)
(SEE SHEET 6)**

**PHASE 2 (CENTRAL)
(SEE SHEET 7)**

**PHASE 1A
38 Acres
RECLAIMED USE:
DRY PASTURE**

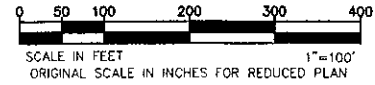


NOTES

1. PHASE 1A TO RECEIVE APPROXIMATELY TWO FEET OF FILL AND BE REGRADED AS SHOWN.
2. 1'-2' BERMS TO BE ADDED ALONG PHASE LINES AS NECESSARY TO KEEP SURFACE DRAINAGE FROM ENTERING INTO THE DESIGNATED OPEN WATER AREAS.
3. BOTTOM ELEVATIONS ARE ±10' DEPENDING ON ACTUAL BOTTOM OF GRAVEL DEPTHS. ELEVATIONS SHOWN ON PLAN ASSUME BOTTOM OF GRAVEL TO BE 75' BELOW EXISTING GROUND.
4. CONTOUR INTERVAL FOR EXISTING TOPOGRAPHY EQUALS 2'. CONTOUR INTERVAL FOR PROPOSED RECLAMATION PLAN EQUALS 1'.

**GRANITE CONSTRUCTION
RECLAMATION PLAN
PHASE 1A**

SHEET
3
OF
13
DATE: 10/12/07
JOB NO: 963.02



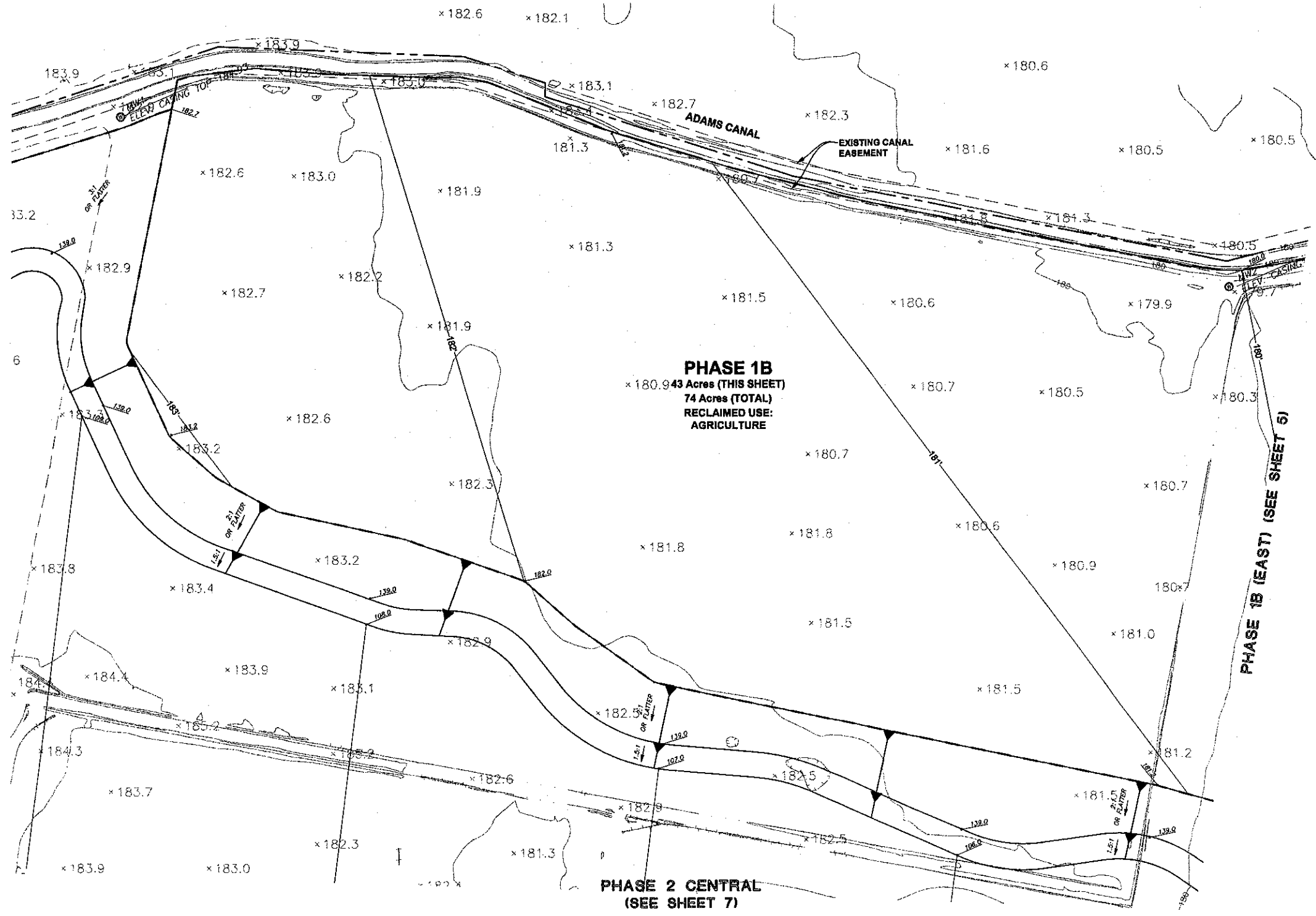
DATE SIGNED:
THESE DRAWINGS ARE NOT
CONSIDERED FINAL UNTIL THE
ENGINEER'S SEAL BELOW HAS BEEN
SIGNED AND DATED.

CEWEST.COM
Project Planning • Civil Engineering • Landscape Architecture
Sacramento Office
2100 20th Street, Suite Three
Sacramento, CA 95816
(916) 455-2025
Folsom Office
2940 Spillford Street, Suite 200
Davis, CA 95618
(530) 758-2026

NO.	DATE	REVISIONS	BY	APPD.	DESIGNED BY: INC	DRAWN BY: SIM	CHECKED BY: SG	SCALE
								1" = 100'

NOTES

- 1'-2' BERMS TO BE ADDED ALONG PHASE LINES AS NECESSARY TO KEEP SURFACE DRAINAGE FROM ENTERING INTO THE DESIGNATED OPEN WATER AREAS.
- BOTTOM ELEVATIONS ARE ±10' DEPENDING ON ACTUAL BOTTOM OF GRAVEL DEPTHS. ELEVATIONS SHOWN ON PLAN ASSUME BOTTOM OF GRAVEL TO BE 75' BELOW EXISTING GROUND.

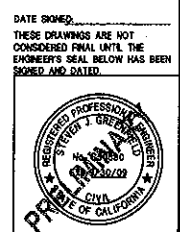
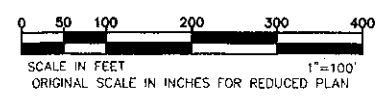


NO.	DATE	REVISIONS	BY	APPD.

CEWEST.COM
 Project Planning & Civil Engineering & Landscape Architecture
 Sacramento Office
 240 Spalding Street, Suite 200
 Sacramento, CA 95838
 (916) 458-3285

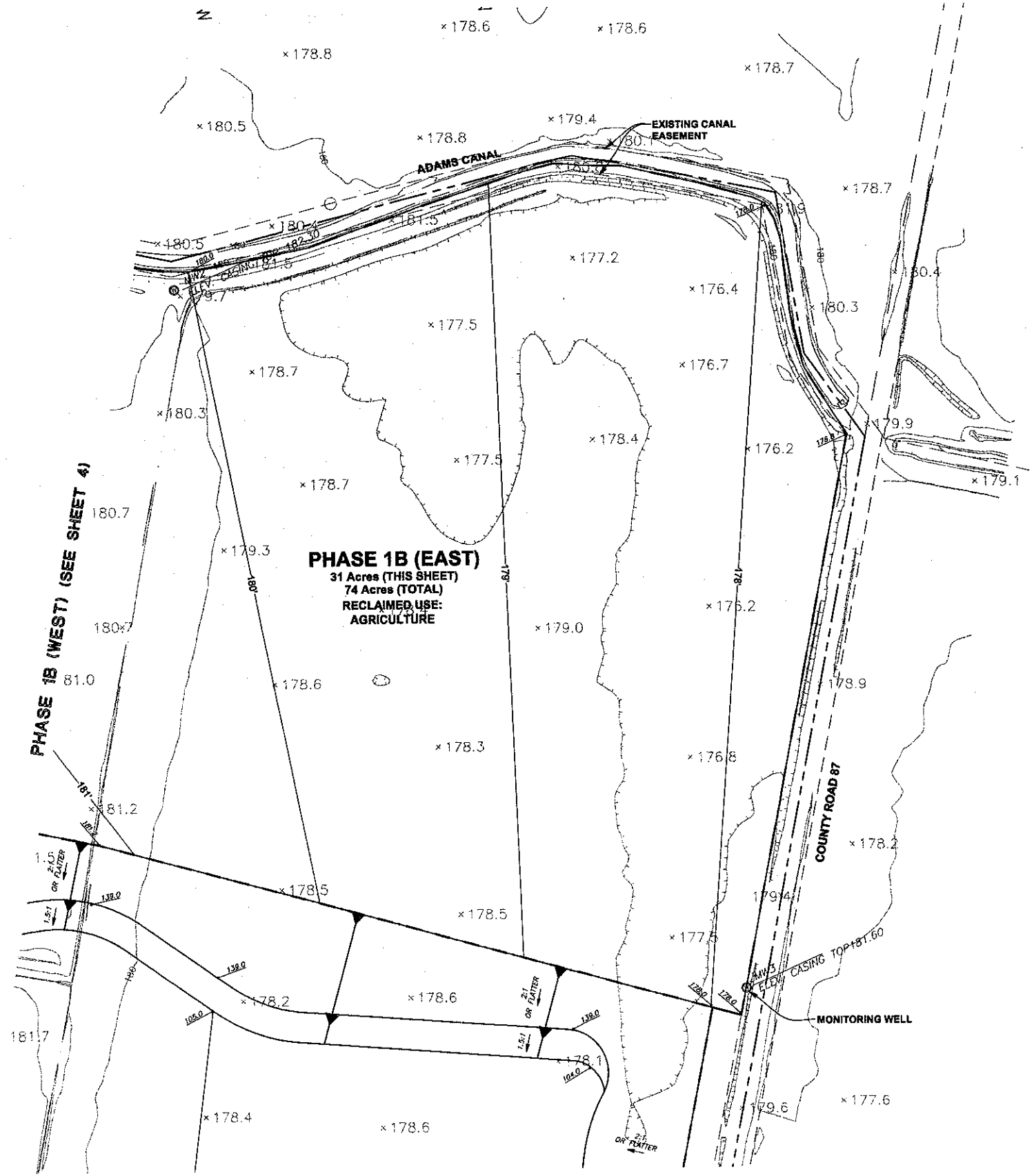


**GRANITE CONSTRUCTION
 RECLAMATION PLAN
 PHASE 1B (WEST)**



DATE SHOWN: THESE DRAWINGS ARE NOT CONSIDERED FINAL UNTIL THE ENGINEER'S SEAL BELOW HAS BEEN SIGNED AND DATED.
 SHEET **4** OF **13**
 DATE: 10/12/07
 JOB NO: 963.02

Small vertical text at the bottom right corner, likely a file path or version number.



- NOTES**
- 1'-2' BERMS TO BE ADDED ALONG PHASE LINES AS NECESSARY TO KEEP SURFACE DRAINAGE FROM ENTERING INTO THE DESIGNATED OPEN WATER AREAS.
 2. BOTTOM ELEVATIONS ARE ±10' DEPENDING ON ACTUAL BOTTOM OF GRAVEL DEPTHS. ELEVATIONS SHOWN ON PLAN ASSUME BOTTOM OF GRAVEL TO BE 75' BELOW EXISTING GROUND.

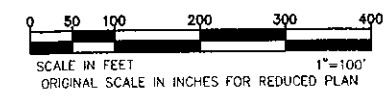
NO.	DATE	REVISIONS	BY	APP'D.	DESIGNED BY	DRAWN BY	CHECKED BY	SCALE
								1" = 100'

CEWEST.COM
 Project Planning • Civil Engineering • Landscape Architecture
 Sacramento Office
 220 20th Street, Suite Three
 Sacramento, CA 95838
 (916) 455-2025



**GRANITE CONSTRUCTION
 RECLAMATION PLAN
 PHASE 1B (EAST)**

DATE SIGNED:
 THESE DRAWINGS ARE NOT
 CONSIDERED FINAL UNTIL THE
 ENGINEER'S SEAL BELOW HAS BEEN
 SIGNED AND DATED.



SHEET
5
 OF
13
 DATE: 10/12/07
 JOB NO: 963.02

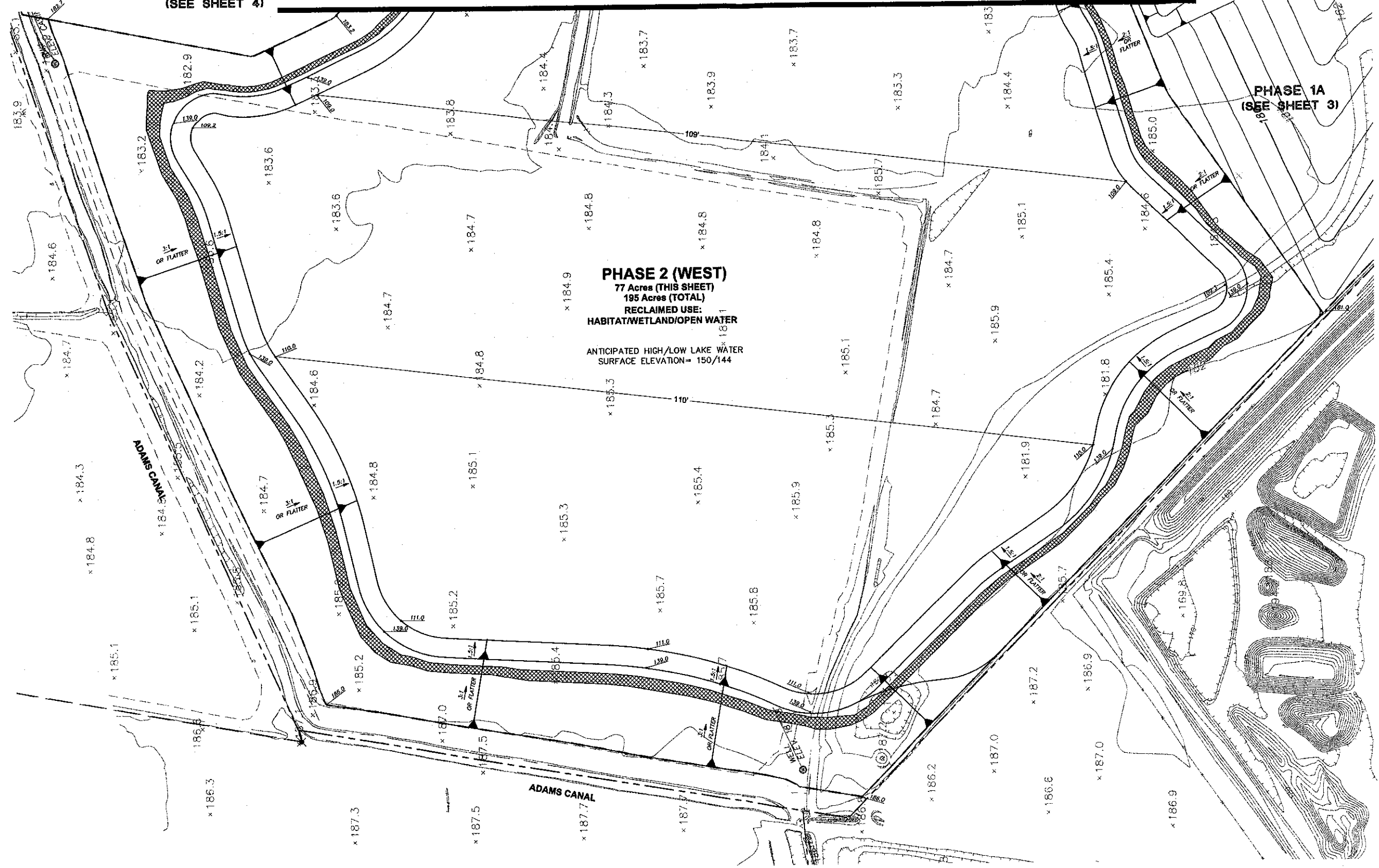
PHASE 1B
(SEE SHEET 4)

MATCH LINE - PHASE 2 (CENTRAL) (SEE SHEET 7)

PHASE 1A
(SEE SHEET 3)

PHASE 2 (WEST)
77 Acres (THIS SHEET)
195 Acres (TOTAL)
RECLAIMED USE:
HABITAT/WETLAND/OPEN WATER


ANTICIPATED HIGH/LOW LAKE WATER
SURFACE ELEVATION= 150/144



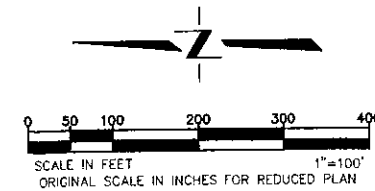
NOTES

- 1'-2' BERMS TO BE ADDED ALONG PHASE LINES AS NECESSARY TO KEEP SURFACE DRAINAGE FROM ENTERING INTO THE DESIGNATED OPEN WATER AREAS.
- BOTTOM ELEVATIONS ARE ±10' DEPENDING ON ACTUAL BOTTOM OF GRAVEL DEPTHS. ELEVATIONS SHOWN ON PLAN ASSUME BOTTOM OF GRAVEL TO BE 75' BELOW EXISTING GROUND.

LEGEND

 SHALLOW WATER HABITAT MEASURED ALONG THE SLOPE BETWEEN HIGH AND LOW WATER

SHALLOW WATER HABITAT (ACRE) 5.16
HIGH WATER PERIMETER (FT) 13,300
HIGH WATER LEVEL (FT) 150
LOW WATER LEVEL (FT) 144
OPEN WATER SURFACE (ACRE) 186.4



DATE SHOWN:
THESE DRAWINGS ARE NOT
CONSIDERED FINAL UNTIL THE
ENGINEER'S SEAL BELOW HAS BEEN
SIGNED AND DATED.



**GRANITE CONSTRUCTION
RECLAMATION PLAN
PHASE 2 (WEST)**

SHEET
6
OF
13
DATE: 10/12/07
JOB NO: 963.02

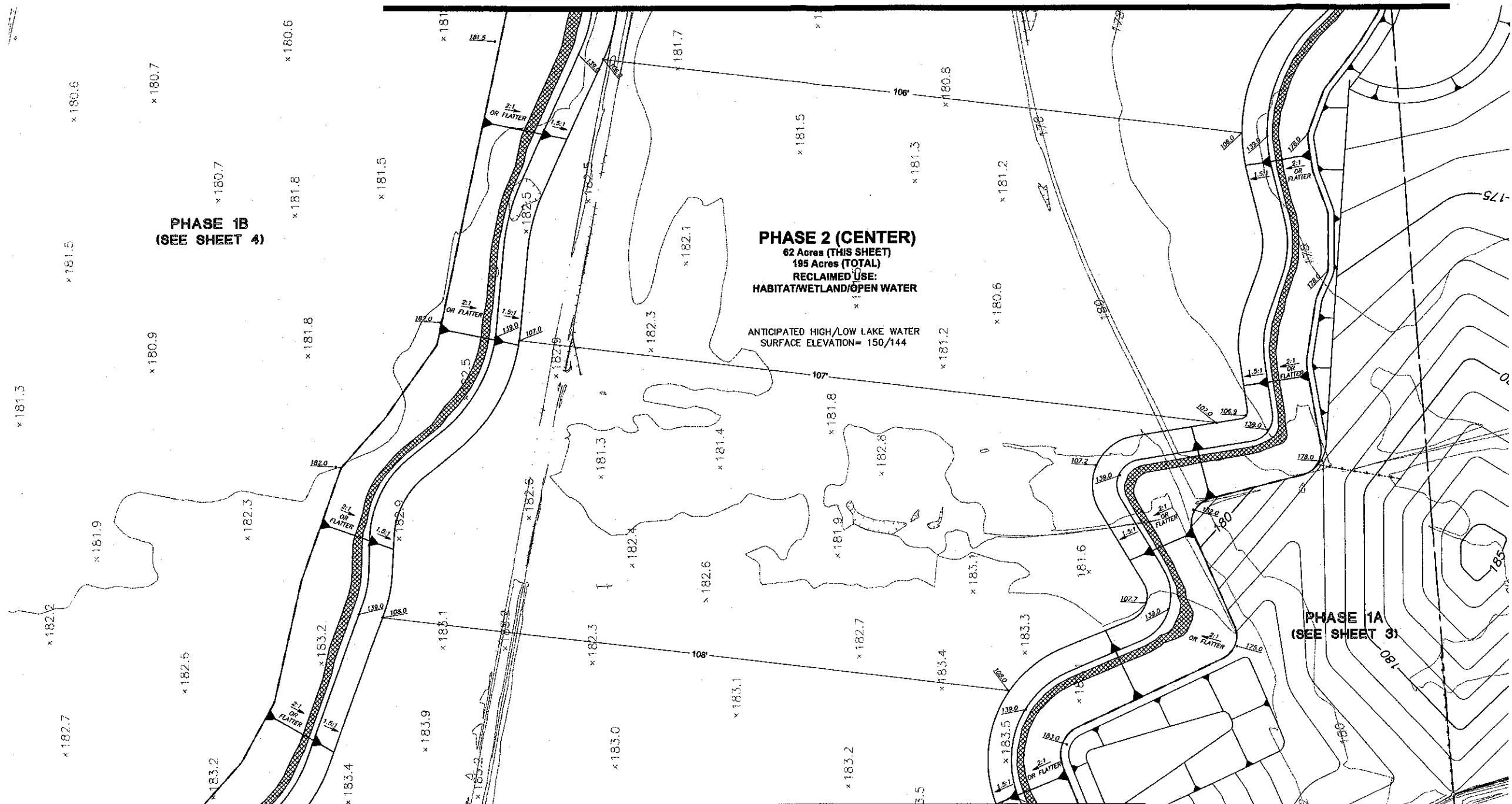
NO.	DATE	REVISIONS	BY	APPRD.

CEQUEST.COM
Project Planning • Civil Engineering • Landscape Architecture
Sacramento Office
220 20th Street, Suite Three
Sacramento, CA 95833
(916) 435-2026



DESIGNED BY: NC
DRAWN BY: SM
CHECKED BY: SG
SCALE
1" = 100'

MATCH LINE - PHASE 2 (EAST) (SEE SHEET 8)




MATCH LINE - PHASE 2 (WEST) (SEE SHEET 6)

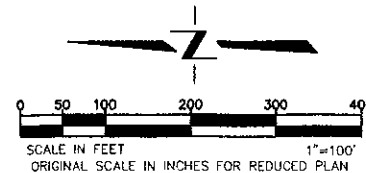
NOTES

- 1'-2' BERMS TO BE ADDED ALONG PHASE LINES AS NECESSARY TO KEEP SURFACE DRAINAGE FROM ENTERING INTO THE DESIGNATED OPEN WATER AREAS.
- BOTTOM ELEVATIONS ARE ±10' DEPENDING ON ACTUAL BOTTOM OF GRAVEL DEPTHS. ELEVATIONS SHOWN ON PLAN ASSUME BOTTOM OF GRAVEL TO BE 75' BELOW EXISTING GROUND.

LEGEND

 SHALLOW WATER HABITAT MEASURED ALONG THE SLOPE BETWEEN HIGH AND LOW WATER

SHALLOW WATER HABITAT (ACRE)	5.16
HIGH WATER PERIMETER (FT)	13,300
HIGH WATER LEVEL (FT)	150
LOW WATER LEVEL (FT)	144
OPEN WATER SURFACE (ACRE)	166.4



DATE SIGNED: 10/12/07
 THESE DRAWINGS ARE NOT CONSIDERED FINAL UNTIL THE ENGINEER'S SEAL BELOW HAS BEEN SIGNED AND DATED.



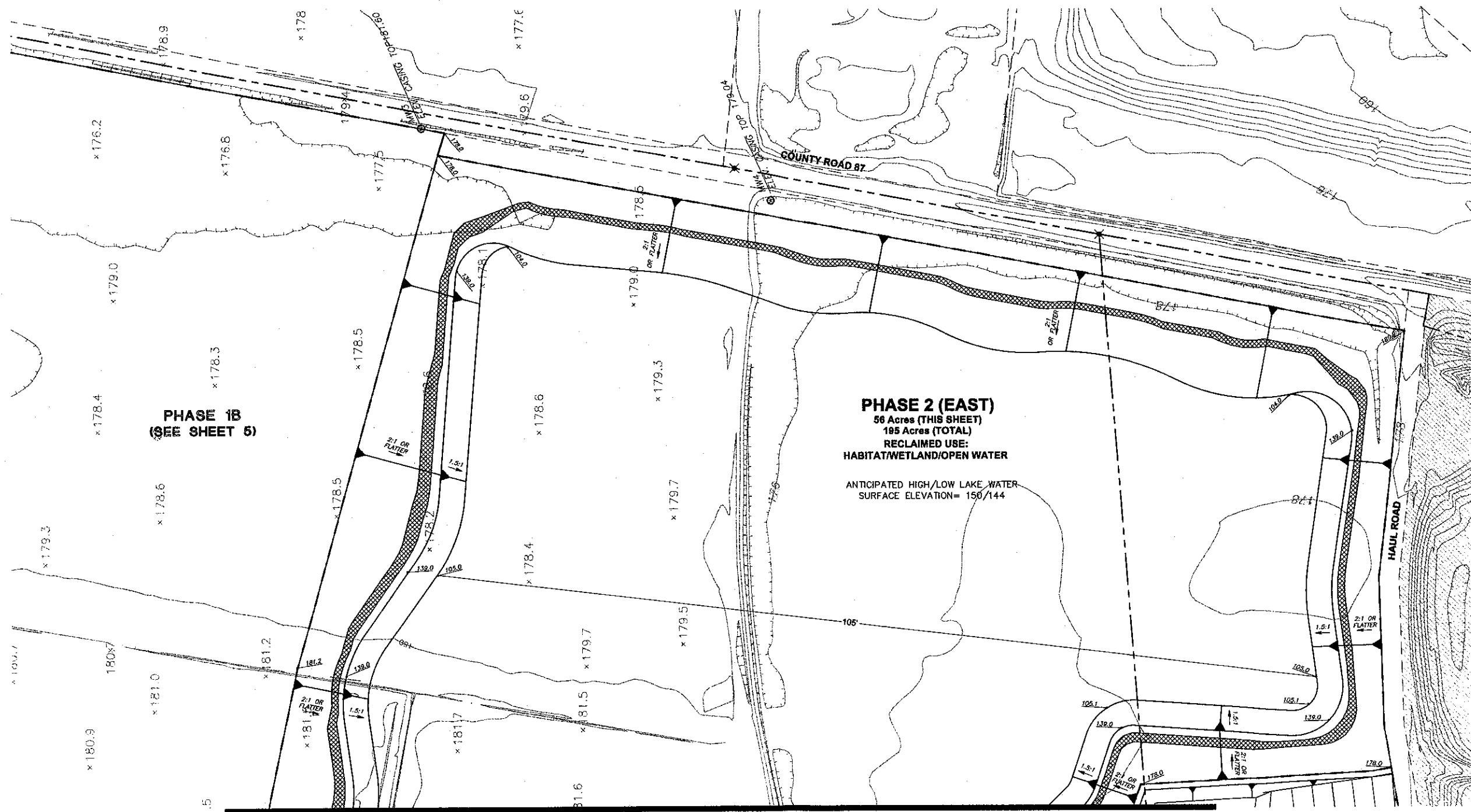
GRANITE CONSTRUCTION RECLAMATION PLAN PHASE 2 (CENTRAL)

SHEET 7 OF 13
 DATE: 10/12/07
 JOB NO: 963.02

DESIGNED BY: J.C.	APPROVED BY:
DRAWN BY: S.M.	REVISIONS:
CHECKED BY: S.G.	NO. DATE:
SCALE: 1" = 100'	

CECWEST.COM
 Project Planning • Civil Engineering • Landscape Architecture
 Sacramento Office
 220 20th Street, Suite Three
 Sacramento, CA 95812
 (916) 452-0288





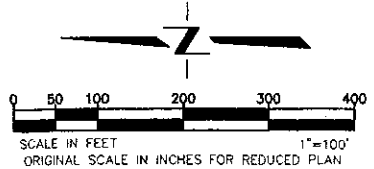
NOTES

1. 1'-2' BERMS TO BE ADDED ALONG PHASE LINES AS NECESSARY TO KEEP SURFACE DRAINAGE FROM ENTERING INTO THE DESIGNATED OPEN WATER AREAS.
2. BOTTOM ELEVATIONS ARE ±10' DEPENDING ON ACTUAL BOTTOM OF GRAVEL DEPTHS. ELEVATIONS SHOWN ON PLAN ASSUME BOTTOM OF GRAVEL TO BE 75' BELOW EXISTING GROUND.

LEGEND

SHALLOW WATER HABITAT MEASURED ALONG THE SLOPE BETWEEN HIGH AND LOW WATER

SHALLOW WATER HABITAT (ACRE)	5.16
HIGH WATER PERIMETER (FT)	13,300
HIGH WATER LEVEL (FT)	150
LOW WATER LEVEL (FT)	144
OPEN WATER SURFACE (ACRE)	166.4



DATE SIGNED: _____
 THESE DRAWINGS ARE NOT CONSIDERED FINAL UNTIL THE ENGINEER'S SEAL BELOW HAS BEEN SIGNED AND DATED.

**GRANITE CONSTRUCTION
 RECLAMATION PLAN
 PHASE 2 (EAST)**

SHEET
8
 OF
13
 DATE: 10/12/07
 JOB NO: 963.02

CUNNINGHAM ENGINEERS

Project Planning • Civil Engineering • Landscape Architecture

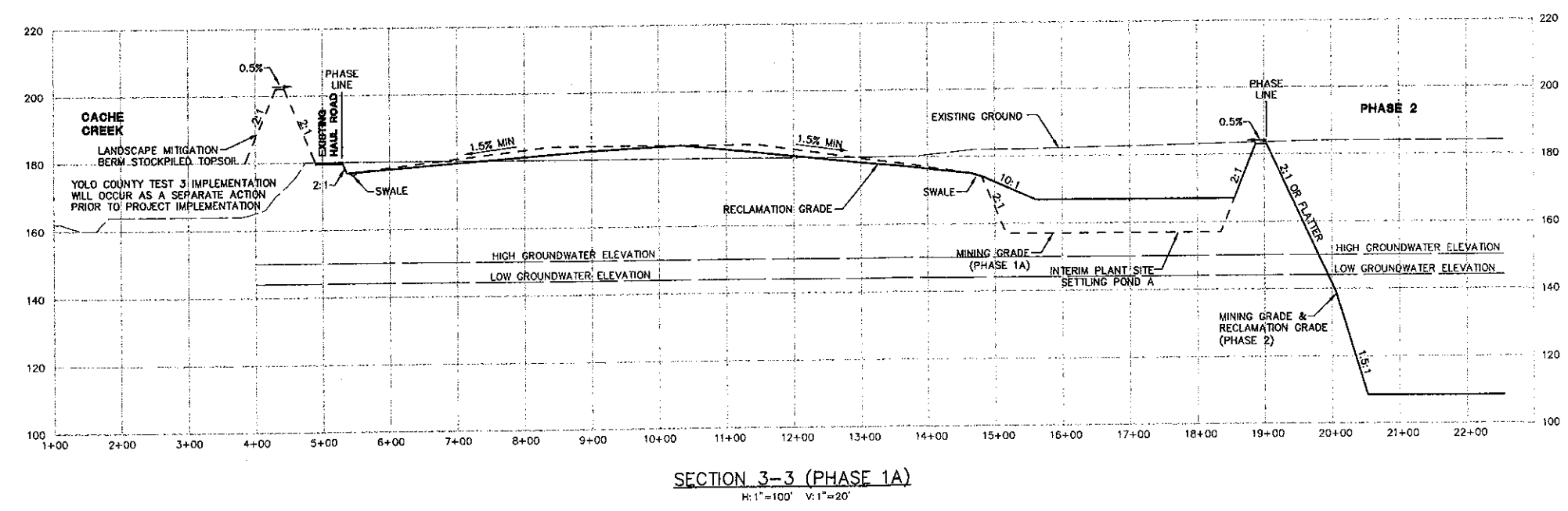
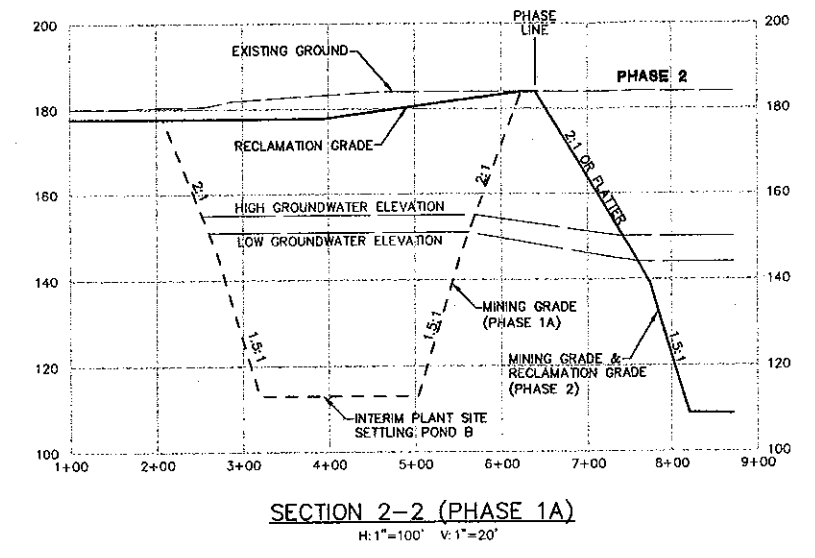
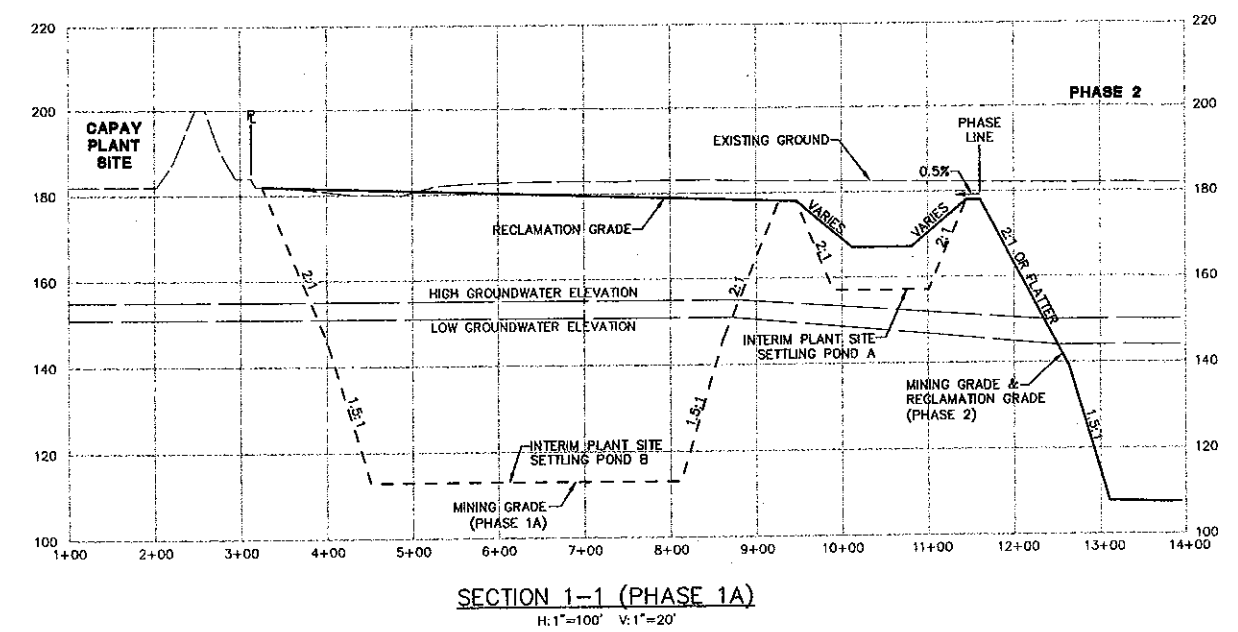
Surreyville Office
 210 26th Street, Suite 1000
 Sacramento, CA 95818
 (916) 655-5266

Corporate Office
 290 Spotted Tail Street, Suite 200
 Sacramento, CA 95834
 (916) 755-5265

CECWEST.COM

DESIGNED BY: NC	APPR.:
DRAWN BY: SM	BY:
CHECKED BY: SC	REVISIONS:
SCALE	NO. DATE:
1" = 100'	

NOTE:
 1. ELEVATIONS AND DISTANCES ARE APPROXIMATE. EXISTING GROUND BASED AERIAL TOPOGRAPHY FLOWN MAY 2007. PROVIDED BY STEWART GEOTECHNOLOGIES VIA TOLU COUNTY AND INFORMATION PROVIDED BY GRANITE CONSTRUCTION COMPANY ON AUGUST 16, 2007.
 2. HIGH AND LOW AVERAGE GROUNDWATER ELEVATIONS BASED ON GROUNDWATER MAPS BY WALLACE KUHLE & ASSOCIATES, INC. DATED JULY 2007.



DATE SHOWN:
 THESE DRAWINGS ARE NOT CONSIDERED FINAL UNTIL THE ENGINEER'S SEAL BELOW HAS BEEN SIGNED AND DATED.

DESIGNED BY: NC	SCALE: AS NOTED
DRAWN BY: SM	
CHECKED BY: SG	
NO.	DATE
BY	REVISIONS
APPRO.	

CECWEST.COM
 Project Planning • Civil Engineering • Landscape Architecture
 Sacramento Office
 2700 20th Street, Suite 200
 Sacramento, CA 95811
 (916) 455-5200

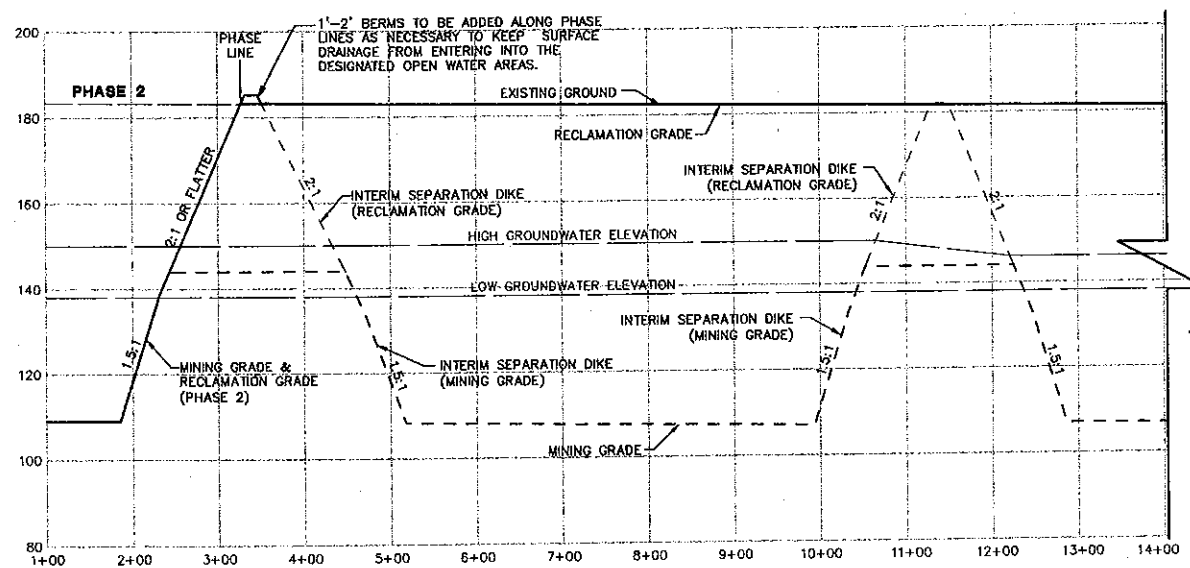
Corporate Office
 2540 Spotted Owl Way
 Davis, CA 95618
 (530) 756-5200

CUNNINGHAM ENGINEERS

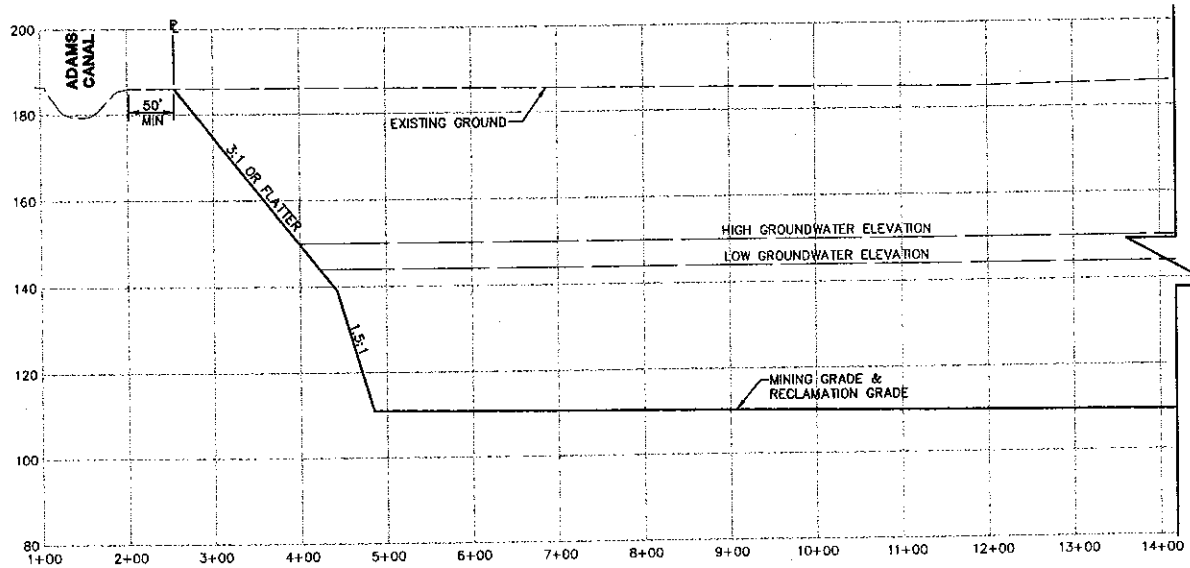
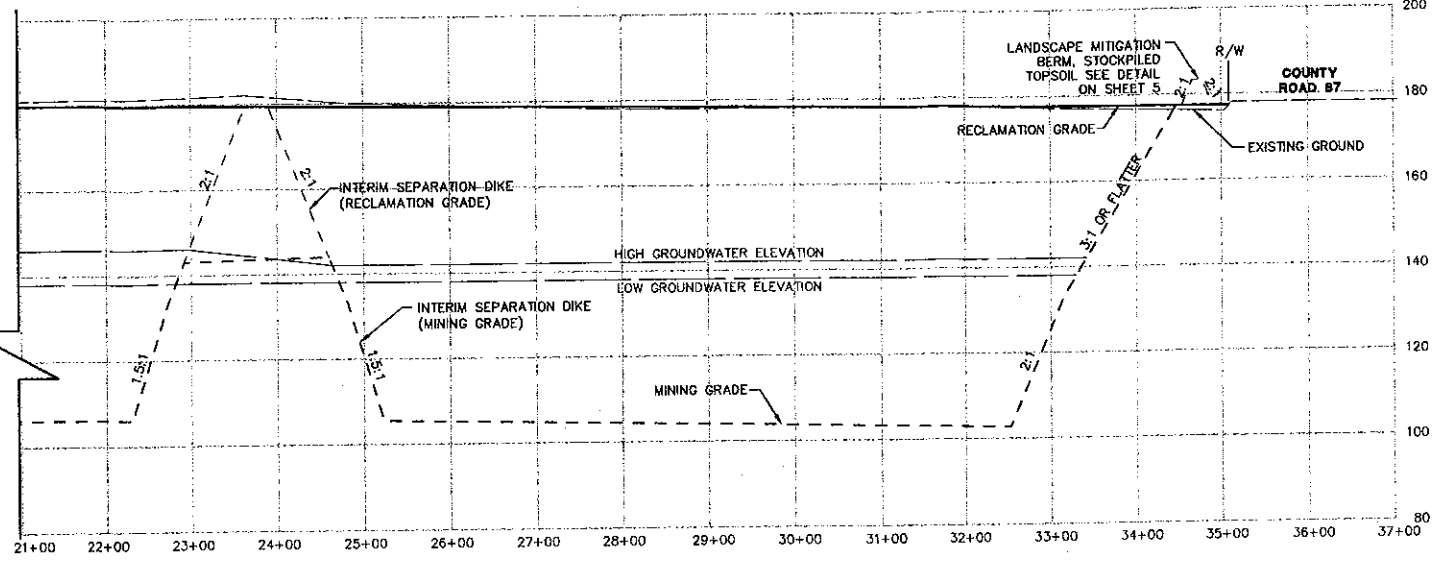
GRANITE CONSTRUCTION RECLAMATION PLAN CROSS SECTIONS

SHEET **9** OF **13**
 DATE: 10/30/07
 JOB NO: 963.02

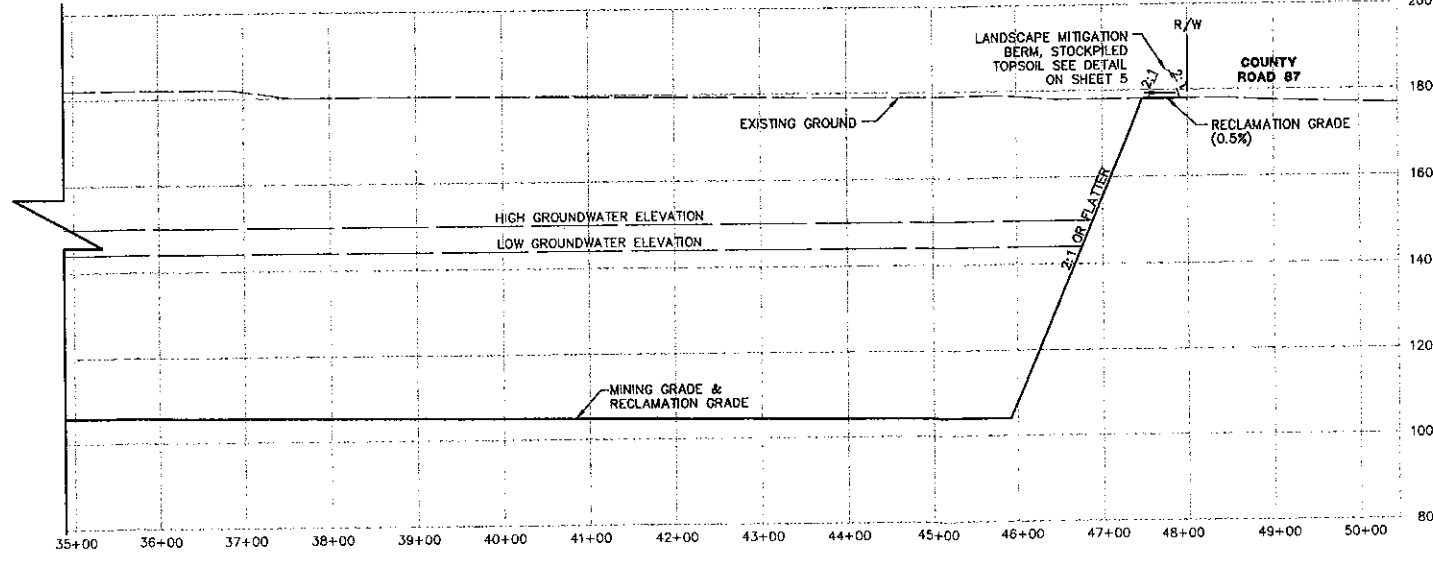
NOTE:
 1. ELEVATIONS AND DISTANCES ARE APPROXIMATE. EXISTING GROUND BASED AERIAL TOPOGRAPHY FLOWN MAY 2007. PROVIDED BY STEWART GEOTECHNOLOGIES VIA TOLDO COUNTY AND INFORMATION PROVIDED BY GRANITE CONSTRUCTION COMPANY ON AUGUST 16, 2007.
 2. HIGH AND LOW AVERAGE GROUNDWATER ELEVATIONS BASED ON GROUNDWATER MAPS BY WALLACE KUHL & ASSOCIATES, INC. DATED JULY 2007.



SECTION 4-4 (PHASE 1B)
 H: 1"=100' V: 1"=20'



SECTION 5-5 (PHASE 2)
 H: 1"=100' V: 1"=20'



DESIGNED BY	NC	SCALE	AS NOTED
DRAWN BY	SM		
CHECKED BY	SG		
APPROVED BY			
NO. DATE			
REVISIONS			

CEWEST.COM
 Project Planning • Civil Engineering • Landscape Architecture
 Sacramento Office
 2100 20th Street, Suite Three
 Sacramento, CA 95818
 (916) 455-3026

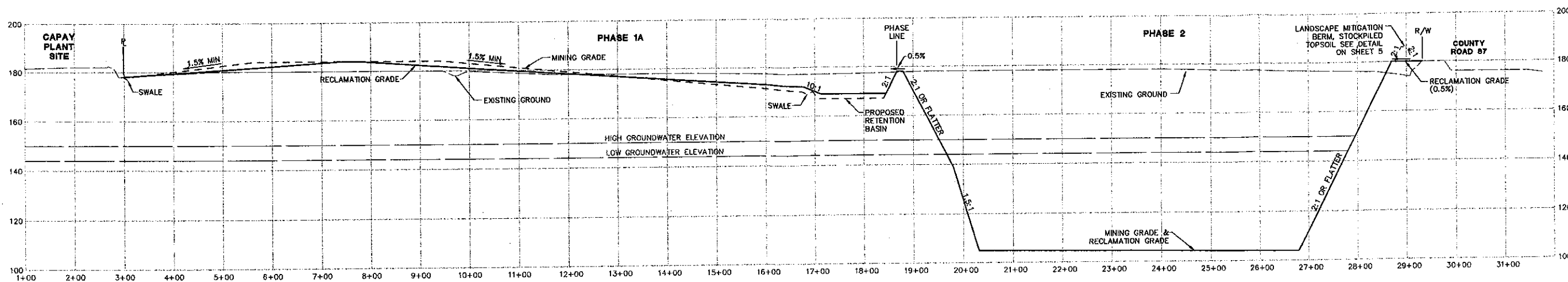
GRANITE CONSTRUCTION RECLAMATION PLAN CROSS SECTIONS

DATE SIGNED: _____
 THESE DRAWINGS ARE NOT CONSIDERED FINAL UNTIL THE ENGINEER'S SEAL BELOW HAS BEEN SIGNED AND DATED.

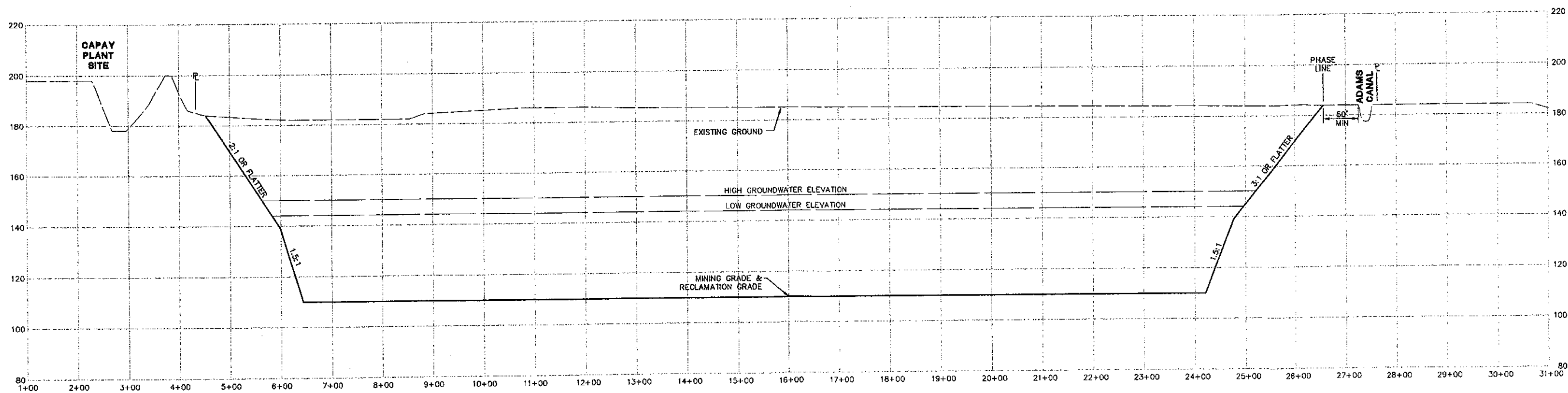
REGISTERED PROFESSIONAL ENGINEER
 CIVIL
 STATE OF CALIFORNIA
 No. 40000
 Exp. 03/31/08

SHEET 10 OF 13
 DATE: 10/30/07
 JOB NO: 963.02

NOTE:
 1. ELEVATIONS AND DISTANCES ARE APPROXIMATE. EXISTING GROUND BASED AERIAL TOPOGRAPHY FLOWN MAY 2007, PROVIDED BY STEWART GEOTECHNOLOGIES VIA TOLDO COUNTY AND INFORMATION PROVIDED BY GRANITE CONSTRUCTION COMPANY ON AUGUST 16, 2007.
 2. HIGH AND LOW AVERAGE GROUNDWATER ELEVATIONS BASED ON GROUNDWATER MAPS BY WALLACE KUHL & ASSOCIATES, INC. DATED JULY 2007.



SECTION 6-6 (PHASE 1A & PHASE 2)
 H:1"=100' V:1"=20'



SECTION 7-7 (PHASE 2)
 H:1"=100' V:1"=20'

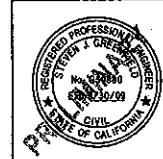
NO.	DATE	REVISIONS	BY	APPD.	DESIGNED BY	DRAWN BY	CHECKED BY	SCALE
					NC	SM	SG	AS NOTED

CEWEST.COM
 Project Planning • Civil Engineering • Landscape Architecture
 • Concrete Office
 2500 Spotted Street, Suite 200
 Sacramento, CA 95838
 (916) 455-9168



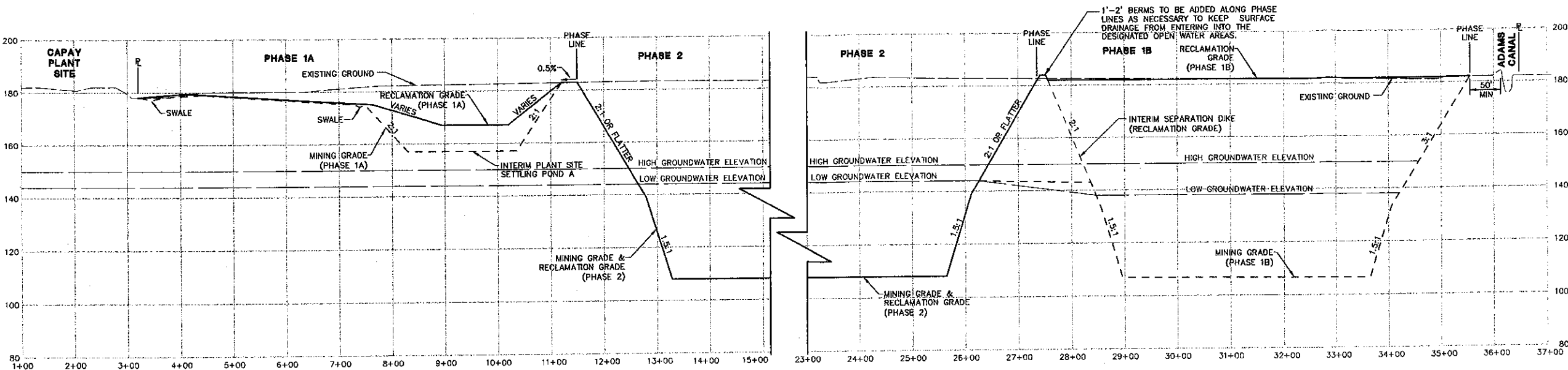
**GRANITE CONSTRUCTION
 RECLAMATION PLAN
 CROSS SECTIONS**

DATE DIGNED:
 THESE DRAWINGS ARE NOT
 CONSIDERED FINAL UNTIL THE
 ENGINEER'S SEAL BELOW HAS BEEN
 SIGNED AND DATED.

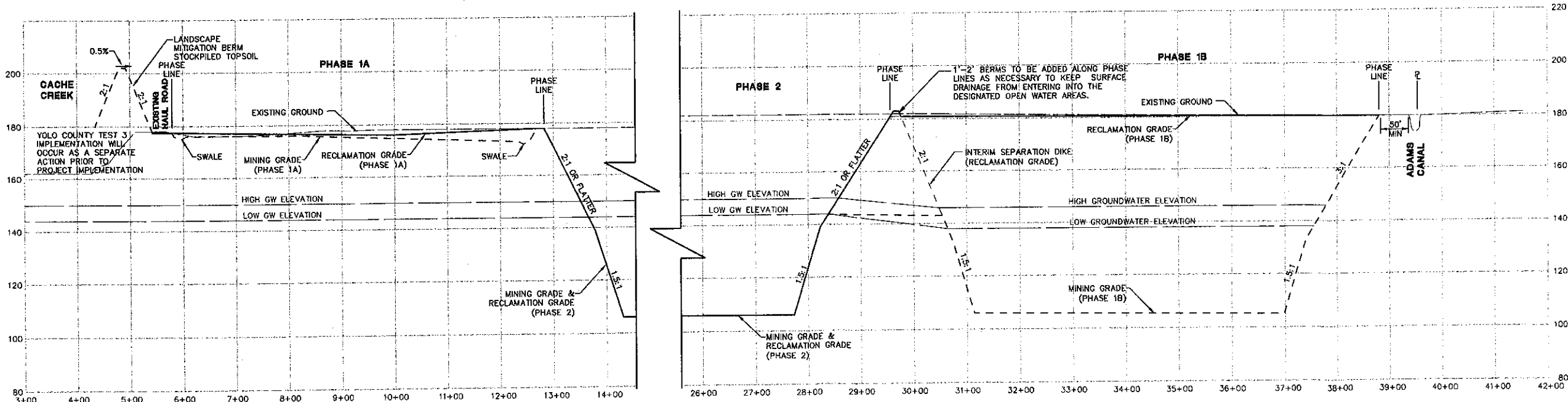


SHEET
11
 OF
13
 DATE: 10/30/07
 JOB NO: 963.02

NOTE:
 1. ELEVATIONS AND DISTANCES ARE APPROXIMATE. EXISTING GROUND BASED AERIAL TOPOGRAPHY FLOWN MAY 2007. PROVIDED BY STEWART GEOTECHNOLOGIES VIA YOLO COUNTY AND INFORMATION PROVIDED BY GRANITE CONSTRUCTION COMPANY ON AUGUST 16, 2007.
 2. HIGH AND LOW AVERAGE GROUNDWATER ELEVATIONS BASED ON GROUNDWATER MAPS BY WALLACE KUHLE & ASSOCIATES, INC. DATED JULY 2007.



SECTION 8-8 (PHASE 1A, 1B, & PHASE 2)
 H:1"=100' V:1"=20'



SECTION 9-9 (PHASE 1A, 1B, & PHASE 2)
 H:1"=100' V:1"=20'

DESIGNED BY	NC	SCALE	AS NOTED
DRAWN BY	SM	CHECKED BY	SG
APPROVED BY			
NO.	DATE	REVISIONS	

CEWEST.COM
 Project Planning • Civil Engineering • Landscape Architecture
 Sacramento Office
 2100 9th Street, Suite Three
 Sacramento, CA 95818
 (916) 435-2025
 Corporate Office
 7940 Stanford Street, Suite 200
 Davis, CA 95618
 (530) 758-2026

**GRANITE CONSTRUCTION
 RECLAMATION PLAN
 CROSS SECTIONS**

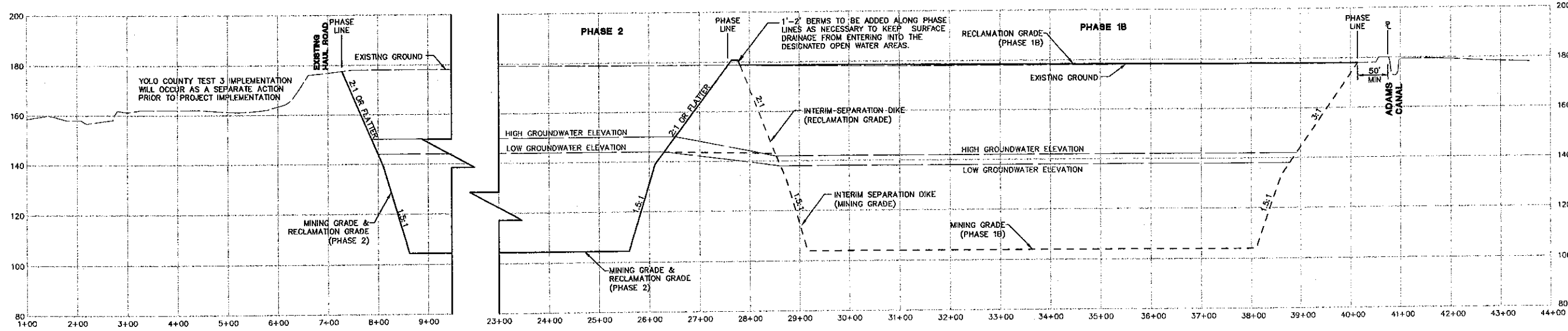
DATE SIGNED: _____
 THESE DRAWINGS ARE NOT CONSIDERED FINAL UNTIL THE ENGINEER'S SEAL BELOW HAS BEEN SIGNED AND DATED.



SHEET
12
 OF
13
 DATE: 10/30/07
 JOB NO: 963.02

NOTE:
 1. ELEVATIONS AND DISTANCES ARE APPROXIMATE. EXISTING GROUND BASED AERIAL TOPOGRAPHY FLOWN MAY 2007, PROVIDED BY STEWART GEOTECHNOLOGIES VIA YOLO COUNTY AND INFORMATION PROVIDED BY GRANITE CONSTRUCTION COMPANY ON AUGUST 16, 2007.
 2. HIGH AND LOW AVERAGE GROUNDWATER ELEVATIONS BASED ON GROUNDWATER MAPS BY WALLACE KUHIL & ASSOCIATES, INC. DATED JULY 2007.

DESIGNED BY	INC
DRAWN BY	SM
CHECKED BY	SS
SCALE	AS NOTED
APPROVED BY	
REVISIONS	
NO.	DATE



SECTION 10-10 (PHASE 1B & PHASE 2)
 H:1"=100' V:1"=20'

CECWEST.COM
 Project Planning • Civil Engineering • Landscape Architecture
 Sacramento Office
 200 20th Street, Suite Three
 Sacramento, CA 95818
 (916) 452-2026



**GRANITE CONSTRUCTION
 RECLAMATION PLAN
 CROSS SECTIONS**

DATE SIGNED: _____
 THESE DRAWINGS ARE NOT
 CONSIDERED FINAL UNTIL THE
 ENGINEER'S SEAL BELOW HAS BEEN
 SIGNED AND DATED.



SHEET
13
 OF
13
 DATE: 10/30/07
 JOB NO: 963.02