

Planning and Public Works

Budget Unit Name	BU No.	Page	Appropriation	Total
Planning & Public Works		77		
Building & Planning	297-1	83	\$2,428,034	
County Surveyor	150-1	85	\$70,000	
Integrated Waste	194-1	86	\$11,909,938	
Transportation	299-5	88	\$280,949	
Roads	299-1	89	<u>\$23,742,483</u>	
				\$38,431,404
		TOTAL	<u><u></u></u>	<u><u>\$38,431,404</u></u>

Planning & Public Works

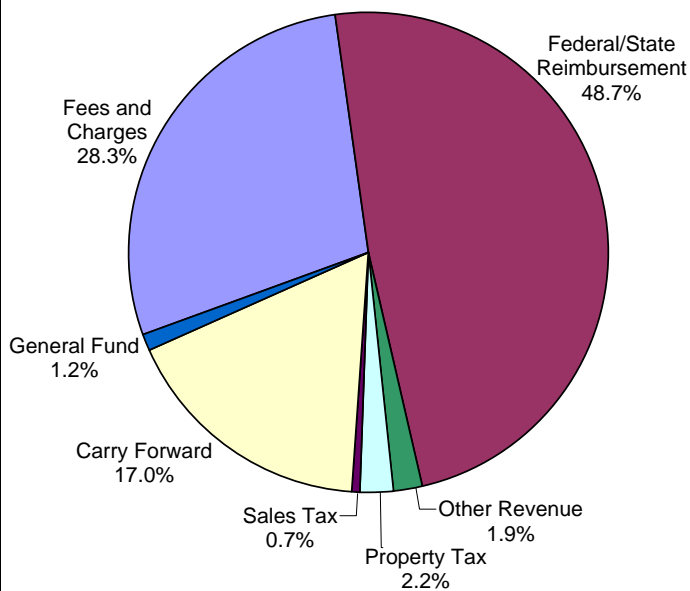


John Bencomo
Director

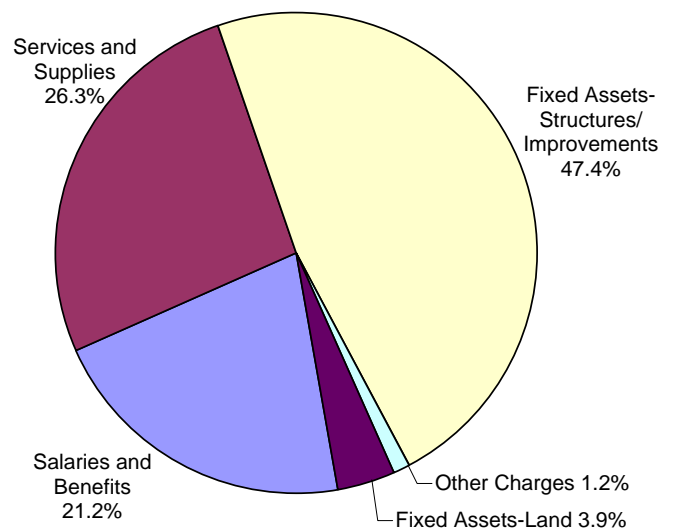
The mission of Planning and Public Works is to provide road maintenance, land use planning and regulation, building construction inspection and code enforcement, and integrated waste management in Yolo County through excellent customer services and responsible financial management.

Total Budget: \$38,431,404

Revenues



Expenditures



SUMMARY

Planning and Public Works

Budget Category	Actual 2008/2009	Budget 2009/2010	Requested 2010/2011	Recommended 2010/2011	Change
APPROPRIATIONS					
Salaries & Benefits	\$8,212,605	\$8,702,878	\$8,135,761	\$8,135,761	\$-567,117
Services & Supplies	\$10,591,905	\$11,565,174	\$10,186,823	\$10,081,823	\$-1,483,351
Fixed Assets-Structures/Imps	\$3,231,223	\$17,812,946	\$18,341,192	\$18,157,075	\$344,129
Other Charges	\$2,056,580	\$464,595	\$458,745	\$458,745	\$-5,850
Fixed Assets-Equipment	\$864,511	\$631,000	\$98,000	\$98,000	\$-533,000
Fixed Assets - Land	\$0	\$1,273,000	\$1,500,000	\$1,500,000	\$227,000
Total Appropriations:	\$24,956,824	\$40,449,593	\$38,720,521	\$38,431,404	\$-2,018,189
REVENUES					
ACO Fund	\$18,000	\$0	\$50,000	\$50,000	\$50,000
Fees & Charges	\$9,626,381	\$11,272,131	\$10,817,865	\$10,825,865	\$-446,266
Federal/State Reimbursement	\$6,109,647	\$19,047,597	\$18,398,792	\$18,613,842	\$-433,755
Other Revenue	\$1,484,521	\$1,519,001	\$738,165	\$721,102	\$-797,899
Operating Transfers In	\$331,637	\$95,800	\$82,800	\$82,800	\$-13,000
Property Tax	\$804,605	\$673,481	\$840,500	\$840,500	\$167,019
Sales Tax	\$269,283	\$280,055	\$280,949	\$280,949	\$894
Carry Forward	\$4,934,492	\$6,803,142	\$7,003,516	\$6,508,412	\$-294,730
General Fund	\$1,349,480	\$705,800	\$456,734	\$456,734	\$-249,066
Intergovernment Revenue-Other	\$28,778	\$52,586	\$51,200	\$51,200	\$-1,386
Total Revenues:	\$24,956,824	\$40,449,593	\$38,720,521	\$38,431,404	\$-2,018,189
POSITIONS(FTE)		Current	Recommended	Funded	
		85.00	78.00	78.00	

DEPARTMENT RESPONSIBILITIES

The Planning and Public Works Department regulates land use planning, building inspection, floodplain management, code enforcement, integrated waste, hazardous waste and recycling services, roads, bridges, infrastructure, engineering and other public works.

Significant Budget Changes

Total appropriations are reduced by 4.5% (\$1.7 million) as compared to 2009-10. The appropriations primarily finances \$19.9 million in capital improvement projects in the Roads and Integrated Waste division budgets. Services and supplies have been reduced significantly as a result of a \$950,000 decrease in appropriations for Road construction and engineering, which will result in a decrease in roadway work.

The department is maintaining its efforts to keep the public works' budget in the ready position to take advantage of any potential Federal or State stimulus funding (road and infrastructure) that may become available. The proposed budget includes funding of the county landfill's entrance facilities to improve operational efficiencies. In addition, the Board of Supervisors has directed the Dunnigan Specific Plan to proceed. However, the project applicants have temporarily suspended all work on the project, except for the continuing work related to the Climate Action Plan. The project developers will pay fees to finance staffing and professional service costs associated with the

project.

Personnel costs are reduced by 8.9%, while services and supplies are reduced by 12.4% from 2009-10. The salary and benefits savings are the result of the elimination of 3 vacant positions in the Roads division, 3 layoffs in the Planning and Building division, and 1 layoff in the Integrated Waste Management division. This is in addition to the layoff/elimination of 4 positions in the prior fiscal year.

SUMMARY OF BUDGET

This budget reflects a consistent level of expenditures in restricted and committed funds for capital projects, while the discretionary General Fund costs continue to be significantly reduced. The recommended budget reflects significant net reductions in staffing salaries, fixed assets (equipment) and actual operational (maintenance) or service hours available to accomplish the projects outlined, assuming the Federal or State funds are provided. The Planning and Building General Fund budget reflects the position elimination (lay off) of 5 employees and reduced service levels due to the continued flatness in regional economic development activity. Correspondingly, General Fund contributions and fee revenues are also reduced.

Positions

The following positions are proposed for elimination and necessitate a layoff:

- Chief assistant building official
- Solid waste operations manager
- Chief assistant director of PPW

The following positions will remain vacant and unfunded:

- Senior accountant
- Senior road maintenance worker

The following vacant positions were eliminated in 2009-10:

- Senior planner
- Administrative clerk II (2 positions)
- Administrative service analyst
- Senior road maintenance worker (2 positions)
- Road maintenance crew leader
- Permit counter technician II
- Building inspector III
- Secretary to the director (Supervisor)

Revenues

The Planning and Public Works Department receives approximately 1% of its total revenue from the General Fund. Other revenue sources include federal and state reimbursements (49%), fees and charges (27%), carry forward from non-general fund budgets, e.g., roads, integrated waste management (17%), and in other revenue, dedicated property and state sales tax allocation (6%). The Planning and Building division receives all of the General Fund allocation within this department, representing 23% of that division's revenue (73% collected from fees for services).

Fixed Assets

The department request to appropriate \$19,841,192 in restricted funds is recommended. This total includes \$16,341,192 in the Roads division for structural road and bridge improvement projects. The remaining \$3,500,000 is for the Integrated Waste Management division to repair the landfill entrance, access road and County Road 28H. This amount also includes remodeling the existing scale house and installing gas monitoring probes consistent with new State law, and to purchase property for soil borrowing and landfill waste construction and closure. The Roads and Sanitation projects are identified on the lists included in this section of the budget document.

Equipment (Fixed Assets) totaling \$98,000 is the combined amount for the Integrated Waste Management and the Planning and Building divisions as listed in the equipment requests in the appendix of the budget.

The Roads division is planning road construction projects totaling \$16,341,192 (2.2%) slightly more than last year. This increase is primarily in road construction projects focused on exercising opportunities for Federal stimulus funds if made available, and continuing progress on planned capital projects. However, State program funding and tax revenues are anticipated to remain at reduced levels and payments from the State may be held, or at best, will be intermittently disbursed.

ACCOMPLISHMENTS 2009-2010

Planning and Development Services

- County's 2030 Draft General Plan and environmental document (EIR), adopted by the Board
- Completed/approved the countywide residential and commercial design guidelines
- Approved for a reclassification under the FEMA Community Rating System Program that will result in reduced flood insurance rates for the unincorporated areas of the county
- Completed/adopted the General Plan Housing Element and affordable housing program
- Board consideration of a countywide draft antiquated subdivision cluster housing ordinance
- Completed/adopted an array of new ordinances including, wind energy, commercial signage, parking, etc.
- Implemented a digital document imaging/storage system for inter-agency construction reviews

Roads Engineering, Maintenance and Construction

- Accomplished a partial reimbursement from the State for the reconstruction of the Huff's corner levee project completed 2006-07 with Road Funds (approx. \$1.1 million received, however, \$842,000 remains unpaid)
- Updated 10 year maintenance and capital improvement plan for roads and bridges
- Reconstructed CR-22 (River Road) using Federal stimulus (ARRA) funds
- Established an equipment management and replacement program for air quality standards
- Completed the construction of the Woodland-Davis bike path on CR29 and CR99D
- Completed and adopted the updated county infrastructure construction and grading standards
- Reduced maintenance cost obligations for underutilized roads with continued public access
- Completed a countywide drainage manual in partnership with the floodSAFE Yolo program

Integrated Waste Management and Recycling (Landfill)

- Successfully negotiated waste stream agreements with each of the cities for the landfill
- Adopted county ordinance and implemented a construction & demolition recycling program to increase landfill waste diversion
- Applied for and secured approvals for required state permits and initiated the implementation of the approved landfill alternatives analyzed in the certified EIR mitigations program
- Completed the contract negotiations for franchise agreements to establish and implement a

- curbside waste/recycling pick up program for the unincorporated communities in the county
- Negotiated for out-of-county waste importation to increase revenues and operational efficiencies
- Continued success in the procurement of federal grants for the full-scale bioreactor project
- Developed and implemented a countywide office recycling program and procurement policy

GOALS AND OBJECTIVES 2010-2011

Planning and Development Services

- Implementation of the workplan for the adopted county General Plan that includes: update of the eight community plans; the zoning ordinance; and development of a TDR program
- Pursuant to Board direction initiate new Specific Plans identified in the adopted General Plan
- Implement the economic development recommendations and permit review/tracking program
- Explore the viability of a county Teeter & Receivership Program for property enforcement fees
- Develop a countywide alternative energy and green building construction ordinance
- Complete certification (CASP) of Building Official for ADA access compliance inspections

Roads Engineering, Maintenance and Construction

- Work with the cities to construct the alternative transportation corridor, as funding is available
- Complete Safety Improvement projects for CR140, CR23, and CR22 north of W. Sacramento
- Complete right of way acquisition and final design for the CR-98 Safety Improvement project
- Complete the construction of the new Guinda bridge in Capay Valley
- Complete the reconstruction of the CR93A segment connecting CR31 and Russell Blvd
- Replace failed culverts on CR29 & implement sign reflectivity program to comply with new law
- Provide annual update of CIP program for road and bridge construction prioritization by Board

Integrated Waste Management and Recycling (Landfill)

- Complete negotiations/agreements for waste stream commitments with UC Davis and the Tribe
- Work to develop a public/private partnership in processing waste stream to alternative fuels
- Complete the purchase of property adjacent to landfill for mitigation and soil cover material
- Negotiate additional waste importation to maintain lower fees and expedite closure of old cells
- Complete the automation and remodel of the landfill scalehouse for commercial waste haulers
- Amend contract to allow the transfer/sale of methane gas to outside private/public facilities
- Pursue contracts with haulers and implement program for processing of liquid and septic waste

Planning and Public Works Building and Planning

Budget Category	Actual 2008/2009	Budget 2009/2010	Requested 2010/2011	Recommended 2010/2011	Change
APPROPRIATIONS					
Salaries & Benefits	\$1,883,554	\$1,562,175	\$1,305,300	\$1,305,300	\$-256,875
Services & Supplies	\$1,395,976	\$1,366,558	\$1,072,734	\$1,072,734	\$-293,824
Fixed Assets-Equipment	\$18,651	\$0	\$50,000	\$50,000	\$50,000
Total Appropriations:	\$3,298,181	\$2,928,733	\$2,428,034	\$2,428,034	\$-500,699
REVENUES					
Fees & Charges	\$1,464,793	\$2,053,701	\$1,757,000	\$1,757,000	\$-296,701
Federal/State Reimbursement	\$131,567	\$73,432	\$80,000	\$80,000	\$6,568
Operating Transfers In	\$331,637	\$95,800	\$82,800	\$82,800	\$-13,000
ACO Fund	\$18,000	\$0	\$50,000	\$50,000	\$50,000
Other Revenue	\$2,704	\$0	\$1,500	\$1,500	\$1,500
General Fund	\$1,349,480	\$705,800	\$456,734	\$456,734	\$-249,066
Total Revenues:	\$3,298,181	\$2,928,733	\$2,428,034	\$2,428,034	\$-500,699
POSITIONS(FTE)		Current	Recommended		Funded
		13.00	11.00		11.00

BUDGET UNIT DESCRIPTION

The Building and Planning Division is responsible for reviewing land use and construction activities within the unincorporated area by implementing a variety of local and State laws, including the Yolo County General Plan, County Zoning Code, California Code of Regulations, Subdivision Map Act, Permit Streamlining Act and the California Environmental Quality Act. The division provides public outreach by serving as liaison to eight community advisory committees and the Planning Commission. The division is also responsible for code enforcement, which works with landowners to correct existing zoning and/or building violations (Budget Unit 297-1, Fund 110).

PROGRAM SUMMARIES

Planning Division

- The Draft 2030 General Plan was adopted by the Board of Supervisors in November 2009, and nearly 20 of the 533 action items have already been completed. Work has begun on a comprehensive update of the Zoning Code, as well as several of the community plans to also bring them into consistency.
- Close coordination with the Delta Protection Commission resulted in the adoption of the revised Land Use and Resource Management Plan, which includes several policies that complement the County's approach to the Clarksburg region.
- Over the past year, the Board of Supervisors has adopted several new ordinances, regarding wind energy, commercial signs and parking. Additional ordinances are currently being prepared that deal with water conservation in landscaping, local CEQA thresholds, clustering of rural residences and the Clarksburg Agricultural District.
- Staff has served as liaison to more than 85 citizen's advisory committees and Planning Commission meetings. This includes a summit meeting of all eight advisory committees, which resulted in the adoption by the Board of Supervisors of standard by-laws and training materials for all committee appointments.
- The number of planning applications continues to decline due to the weak economy, from 70 last year to about 45 this year, a reduction of 35 percent. However, this past year

saw approvals of the new Bogle Winery, expansion of the University Retirement Center and expansion of the Seminis research facility.

Building Division

- Public outreach efforts have been expanded during the past year. Training has been provided to contractors, homeowners and other building officials on new regulations and technologies. Building staff have attended several community meetings to answer public questions about the permit process. Current efforts include implementation of a new permit software system that will streamline processing and allow for increased Internet-based permitting.
- The County is now enrolled in the Community Rating System program. Through efforts to improve outreach and documentation for development in the floodplain, FEMA will be reducing flood insurance rates for residents and owners by 5 to 10 percent.
- This year saw the implementation of an amnesty program to allow owners with existing violations to come in and obtain permits without incurring penalties or fines.
- The number of permits issued will likely increase by 17% this year, from 1,450 to 1,700. However, 60% of permit activity is for agricultural and accessory structures, which are minor fees. Commercial and industrial activity only account for 20% of permits. The number of new homes built dropped to 35 last year (compared to 350 in 2005) and is expected to remain the same this fiscal year. Minor improvements, such as roofing, plumbing, and electrical permits increasingly make up the majority of building permits.
- The number of inspections this fiscal year is estimated to decrease from 3,800 to 3,080, a drop of about 20% , which is about the same as last year, but a decrease of 46% from two years ago. The number of business licenses is up slightly from last year (805 to 860), due to better enforcement.
- The number of plan checks continues to remain steady, and is projected to be 390 this year. Unlike previous years, nearly all plan checks are currently done in-house instead of using an outside consultant.

Planning and Public Works County Surveyor

Budget Category	Actual 2008/2009	Budget 2009/2010	Requested 2010/2011	Recommended 2010/2011	Change
APPROPRIATIONS					
Services & Supplies	\$35,967	\$31,000	\$70,000	\$70,000	\$39,000
Total Appropriations:	\$35,967	\$31,000	\$70,000	\$70,000	\$39,000
REVENUES					
Fees & Charges	\$35,967	\$31,000	\$70,000	\$70,000	\$39,000
Total Revenues:	\$35,967	\$31,000	\$70,000	\$70,000	\$39,000
POSITIONS(FTE)		Current	Recommended	Funded	
		0.00	0.00	0.00	

BUDGET UNIT DESCRIPTION

The budget unit contains the funds for activities of the County Surveyor. Surveying activities that cannot be charged to the Road fund, or other budget units are included here (Budget Unit 150-1, Fund 110).

PROGRAM SUMMARIES

Duties for the surveyor include review and endorsement of maps as required by law, reviewing and archiving of Local Agency Formation Commission (LAFCO) and special district maps and legal descriptions. The duties will be performed by a consultant under contract with the County.

Planning and Public Works Integrated Waste

Budget Category	Actual 2008/2009	Budget 2009/2010	Requested 2010/2011	Recommended 2010/2011	Change
APPROPRIATIONS					
Salaries & Benefits	\$2,407,082	\$2,690,057	\$2,427,322	\$2,427,322	\$-262,735
Services & Supplies	\$4,761,670	\$5,540,903	\$5,476,371	\$5,476,371	\$-64,532
Fixed Assets-Equipment	\$119,684	\$301,000	\$48,000	\$48,000	\$-253,000
Fixed Assets-Structures/Imps	\$0	\$1,780,000	\$2,000,000	\$2,000,000	\$220,000
Fixed Assets - Land	\$0	\$1,273,000	\$1,500,000	\$1,500,000	\$227,000
Other Charges	\$1,956,430	\$464,095	\$458,245	\$458,245	\$-5,850
Total Appropriations:	\$9,244,866	\$12,049,055	\$11,909,938	\$11,909,938	\$-139,117
REVENUES					
Fees & Charges	\$7,708,493	\$8,850,430	\$8,757,322	\$8,757,322	\$-93,108
Federal/State Reimbursement	\$603,571	\$182,500	\$289,500	\$289,500	\$107,000
Other Revenue	\$741,451	\$376,150	\$266,950	\$266,950	\$-109,200
Intergovernment Revenue-Other	\$28,778	\$52,586	\$51,200	\$51,200	\$-1,386
Carry Forward	\$162,573	\$2,587,389	\$2,544,966	\$2,544,966	\$-42,423
Total Revenues:	\$9,244,866	\$12,049,055	\$11,909,938	\$11,909,938	\$-139,117
POSITIONS(FTE)		Current 27.00	Recommended 25.00		Funded 25.00

BUDGET UNIT DESCRIPTION

This budget unit finances the operation of the county's integrated waste management program and the operation of the Yolo County Central Landfill and Esparto Convenience Center (transfer station). The budget operates as an enterprise fund, which means that user fees must cover all costs of the program, including capital improvements (Budget Unit 194-1, Fund 194).

PROGRAM SUMMARIES

Key Measurements

- Received 310,422 tons of discarded materials
- Disposed of 201,890 tons of waste
- Recycled 10,618 tons of construction and demolition debris and 25,266 tons of wood and green waste materials
- Recycled 5,001 large appliances (dishwashers, refrigerators, freezers, washers, dryers, etc.)
- Recycled 206 tons of electronic waste, including cell phones, clocks, radios, shop tools, small kitchen appliances, vacuums, computers, office machines, and 252 tons of TVs, computer monitors and laptops
- Held 12 Household Hazardous Waste (HHW) events and collected over 156 tons of hazardous waste, with 5,630 households participating

2010/11 Sanitation Enterprise Fund Capital Improvement Project List

The following maintenance and construction projects are budgeted for fiscal year 2010/11. Construction projects are contracted through a competitive bidding process with private contractors.

Project	Cost
1. Property Purchase	\$1,500,000
Purchase of property located near the Central Landfill for use as a soil borrow for landfill waste cell construction and closure.	
2. Landfill Scalehouse Construction.....	\$400,000
Completion of the new scalehouse and scale at the landfill. Upgrades the current antiquated scale house and deteriorated scale at the landfill to meet specifications for expanded scale automation and increased traffic requirements.	
3. County Road 28H and Landfill Pavement Repair	\$1,200,000
Repair and reconstruction of a portion of the landfill entrance access road and County Road 28H. Construction widens the entrance to two lanes of traffic each way, reconstructs approximately 1500 feet of County Road 28H, and adds or extends turning lanes on County Road 28H at the landfill entrance.	
4. Retaining Wall and Pavement For Recycling Area	\$350,000
Construction of a retaining wall and pavement area for e-waste, tires, metal, and appliance recycling.	
5. Improvements for accepting septic and other liquid waste	\$50,000
Paving and construction of a new ramp to allow trucks to access the facility and off-load liquid waste.	
TOTAL	\$3,500,000

Planning and Public Works Transportation

Budget Category	Actual 2008/2009	Budget 2009/2010	Requested 2010/2011	Recommended 2010/2011	Change
APPROPRIATIONS					
Services & Supplies	\$269,283	\$280,055	\$280,949	\$280,949	\$894
Total Appropriations:	\$269,283	\$280,055	\$280,949	\$280,949	\$894
REVENUES					
Sales Tax	\$269,283	\$280,055	\$280,949	\$280,949	\$894
Total Revenues:	\$269,283	\$280,055	\$280,949	\$280,949	\$894
POSITIONS(FTE)		Current 0.00		Recommended 0.00	Funded 0.00

BUDGET UNIT DESCRIPTION

This budget unit provides fiscal support for various public transportation programs in Yolo County. The Yolo County Transportation District administers these programs. Funding is provided from the optional 1/4 cent of the state sales tax (Transportation Development Act) adopted by county voters (Budget Unit 299-5, Fund 135).

PROGRAM SUMMARIES

This budget unit is a pass-through account to transfer funding to the Yolo County Transportation District.

Planning and Public Works Roads

Budget Category	Actual 2008/2009	Budget 2009/2010	Requested 2010/2011	Recommended 2010/2011	Change
APPROPRIATIONS					
Salaries & Benefits	\$3,921,969	\$4,450,646	\$4,403,139	\$4,403,139	\$-47,507
Services & Supplies	\$4,129,009	\$4,346,658	\$3,286,769	\$3,181,769	\$-1,164,889
Fixed Assets-Equipment	\$726,176	\$330,000	\$0	\$0	\$-330,000
Fixed Assets-Structures/Imps	\$3,231,223	\$16,032,946	\$16,341,192	\$16,157,075	\$124,129
Other Charges	\$100,150	\$500	\$500	\$500	\$0
Total Appropriations:	\$12,108,527	\$25,160,750	\$24,031,600	\$23,742,483	\$-1,418,267
REVENUES					
Fees & Charges	\$417,128	\$337,000	\$233,543	\$241,543	\$-95,457
Federal/State Reimbursement	\$5,374,509	\$18,791,665	\$18,029,292	\$18,244,342	\$-547,323
Property Tax	\$804,605	\$673,481	\$840,500	\$840,500	\$167,019
Other Revenue	\$740,366	\$1,142,851	\$469,715	\$452,652	\$-690,199
Carry Forward	\$4,771,919	\$4,215,753	\$4,458,550	\$3,963,446	\$-252,307
Total Revenues:	\$12,108,527	\$25,160,750	\$24,031,600	\$23,742,483	\$-1,418,267
POSITIONS(FTE)		Current 45.00		Recommended 42.00	Funded 42.00

BUDGET UNIT DESCRIPTION

This budget unit finances the activities of the Roads Division. Under State accounting regulations, Road funds must be maintained as a separate entity to identify the use of legally earmarked financing resources such as the County share of gasoline tax revenue. Funds are used for maintenance of the County road system, and related work for road construction projects as funding is available (Budget Unit 299-1, Fund 130).

Reduced funding requires the following operational prioritization/efficiencies for FY2010/11:

- Reduced road maintenance levels by limiting pothole repairs to only high volume roads such as minor arterials and major connectors
- Reduced tree trimming, weed spraying and mowing to the higher volume roadways
- Reduced and prioritized ditch cleaning and grading similar to high volume roads/culverts
- Reduced annual pavement marking and striping, and traffic sign repairs and replacement
- Reduced emergency responses to highly traveled roads, and limited week or evening standby

PROGRAM SUMMARIES

Key Measurements

- Patched county roads, and filled potholes, using approximately 5,800 tons of asphalt (last year was 7,500 tons)
- Replaced a county culvert in Willow Bank draining a county street that ran through private property and required excavation over 8 feet deep
- Replaced timber bridge deck on CR23
- Purchased and implemented infrastructure inventory program. This will allow us to comply with GSB34 and Federal retro-reflectivity standards when complete by December 2010
- Developed and implemented sign replacement program to comply with Federal Standards

- Continued bridge and culvert program including replacing CMP and HDP or RCP per our current standard; this also includes working on the Caltrans bridge deficiencies list
- Worked with County Ag to continue to improve roadside weed abatement program; this also includes mowing and ditch work
- Hired City of Woodland to perform traffic signal maintenance at a significant reduction over outside contractors
- Installed permanent 24 flip-up road signs in flood prone areas that include flashers to allow for rapid response during storm events
- Applied successfully for a \$10,000 communications grant that will allow Roads to purchase portable and mobile radios to allow for better communication capabilities
- Maintained stripes and pavement markings county wide using 12,000 gallons of traffic paint; this also includes an upgraded raised pavement maker program with over 15 miles of new super high retro-reflective buttons
- Reconstructed County Road 22 from CR118 to CR 124 using ARRA funds
- Completed the widening and reconstruction of CR29 from CR99 to CR99D, thus completing the Davis-Woodland Bicycle Pathway
- Widened and overlaid CR99D from CR29 to City of Davis limits to include bike lanes
- Completed the Esparto Main Street Revitalization street print phase
- Identified parcels and initiated appraisals for rights of way for the CR98 safety project

2010-11 Road Fund Project List Capital Improvement Program

The following maintenance and construction projects are budgeted for fiscal year 2010-11. Some projects are carryovers from prior fiscal year 2009-10. Construction projects are usually contracted through a competitive bidding process with private contractors.

1. Maintenance

a. Freeport Bridge Maintenance.....	\$225,000
Sources of Financing: County.....	\$225,000

2. Bridge and Bridge Rail Improvement/Replacement Projects

a. County Road 86A over Cottonwood Slough; Bridge Replacement.....	\$200,000
Preliminary Engineering Phase	
Source of Financing: Federal (HBP)	\$177,060
State (Prop 1B)	\$22,940
b. County Road 57 over Cache Creek (Guinda Bridge);	
Bridge Replacement.....	\$3,187,231
Construction Phase	
Sources of Financing: Federal (HBP)	\$2,758,978
State (Seismic).....	\$228,253
State (Prop 1B)	\$200,000
c. County Road 12 over Zamora Creek; Bridge Replacement.....	\$200,000
Preliminary Engineering Phase	
Sources of Financing: Federal (HBP)	\$177,060
State (Prop 1B)	\$22,940
d. County Road 95A; Stevenson Bridge over Putah Creek	\$25,000
Preliminary Engineering Phase (Solano County managing project)	
Sources of Financing: County.....	\$25,000
e. County Road 89 over Buckeye Creek; Bridge Replacement	\$90,000
Preliminary Engineering Phase	
Sources of Financing: Federal (HBP)	\$79,677
County.....	\$10,323
f. County Road 29 over Salt Creek; Bridge Replacement.....	\$120,000
Preliminary Engineering and Right of Way Phases	
Sources of Financing: Federal (HBP)	\$106,236
County.....	\$13,764
g. Scour Counter Measures CR41/Cache, CR99W/Buckeye	\$65,000
Preliminary Engineering Phase	
Sources of Financing: Federal (HBP)	\$57,545
County.....	\$7,456

h. CR89 Bridge over S. Fork Willow Slough	\$7,000
Habitat mitigation phase	
Sources of Financing: Federal (HBP)	\$6,197
County (Syar)	\$803

3. Road Improvement Projects

a. County Road 98; Road Widening	\$1,100,599
Right of Way Phase: Appraisals and Acquisition	
Sources of Financing: Federal (RSTP)	\$615,920
State (Prop 1B)	\$290,015
County	\$68,963
b. County Road 32A/105 Railroad Crossing Guardrail Safety Project	\$130,000
Preliminary Engineering Phase	
Sources of Financing: Federal	\$130,000
c. County Road 23 shoulder widening	\$677,000
Construction Phase	
Sources of Financing: Federal (HRRR)	\$522,000
State (Prop 1B)	\$155,000
d. County Road 140 shoulder widening	\$1,182,486
Construction Phase	
Sources of Financing: Federal (HRRR)	\$855,000
State (Prop 1B)	\$327,486
e. County Road 22 HSIP & Prop 1B Rehabilitation	\$2,723,500
Preliminary Engineering & Construction Phases	
Source of Financing: Federal (HSIP)	\$823,500
State (Prop 1B)	\$1,900,000
f. County Road 31/93A Rehabilitation/Overlay	\$4,045,000
Rehabilitate existing pavement, limits depend on available ARRA funding	
Source of Financing: Federal (ARRA, if awarded)	\$4,045,000
g. County Road 31/93A Rehabilitation/Overlay	\$954,259
Construction Phase	
Source of Financing: Federal (ARRA,)	\$276,234
Federal (RSTP)	\$310,025
State (Prop 1B)	\$368,000
h. Prop. 1B Sign Replacement Project	\$600,000
Preliminary Engineering & Construction Phase	
Source of Financing: State (Prop 1B)	\$600,000
i. Prop. 1B CR32A half mile east of County Road 105	\$400,000
Preliminary Engineering & Construction Phase	
Source of Financing: State (Prop 1B)	\$400,000

4. Culvert Improvement Projects

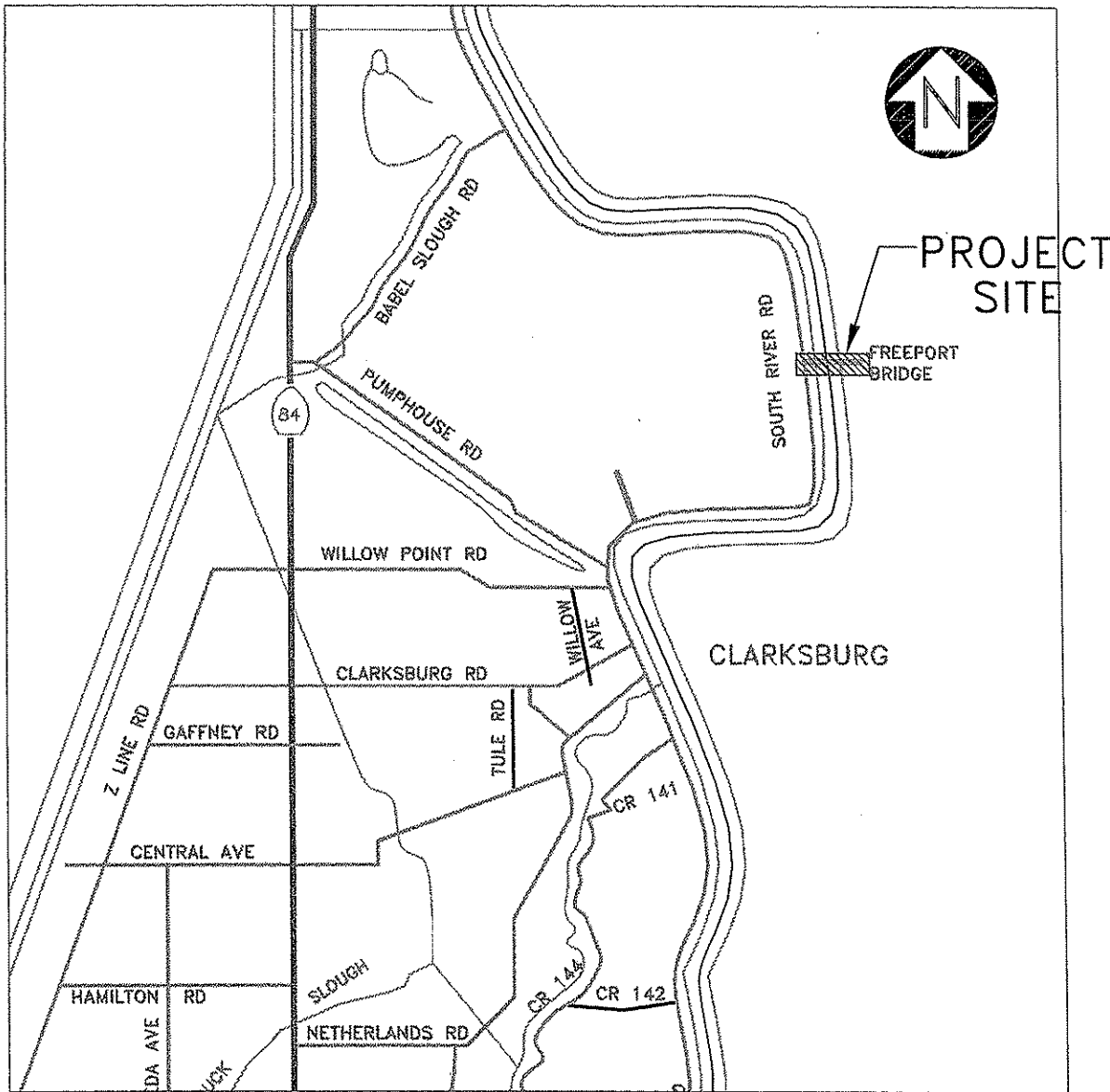
- a. Prop. 1B CR29 Culvert Replacement Project\$150,000
Preliminary Engineering & Construction Phase
Source of Financing: State (Prop 1B)\$150,000

- b. Prop. 1B Misc Culvert Replacement Project\$150,000
Preliminary Engineering & Construction Phase
Source of Financing: State (Prop 1B)\$150,000

ROAD FUND PROJECT SITE MAPS

PROJECT 1 a

ROAD NO. OR NAME: FREEPORT BRIDGE MAINTENANCE



DESCRIPTION OF WORK: Bridge maintenance performed by Sacramento County

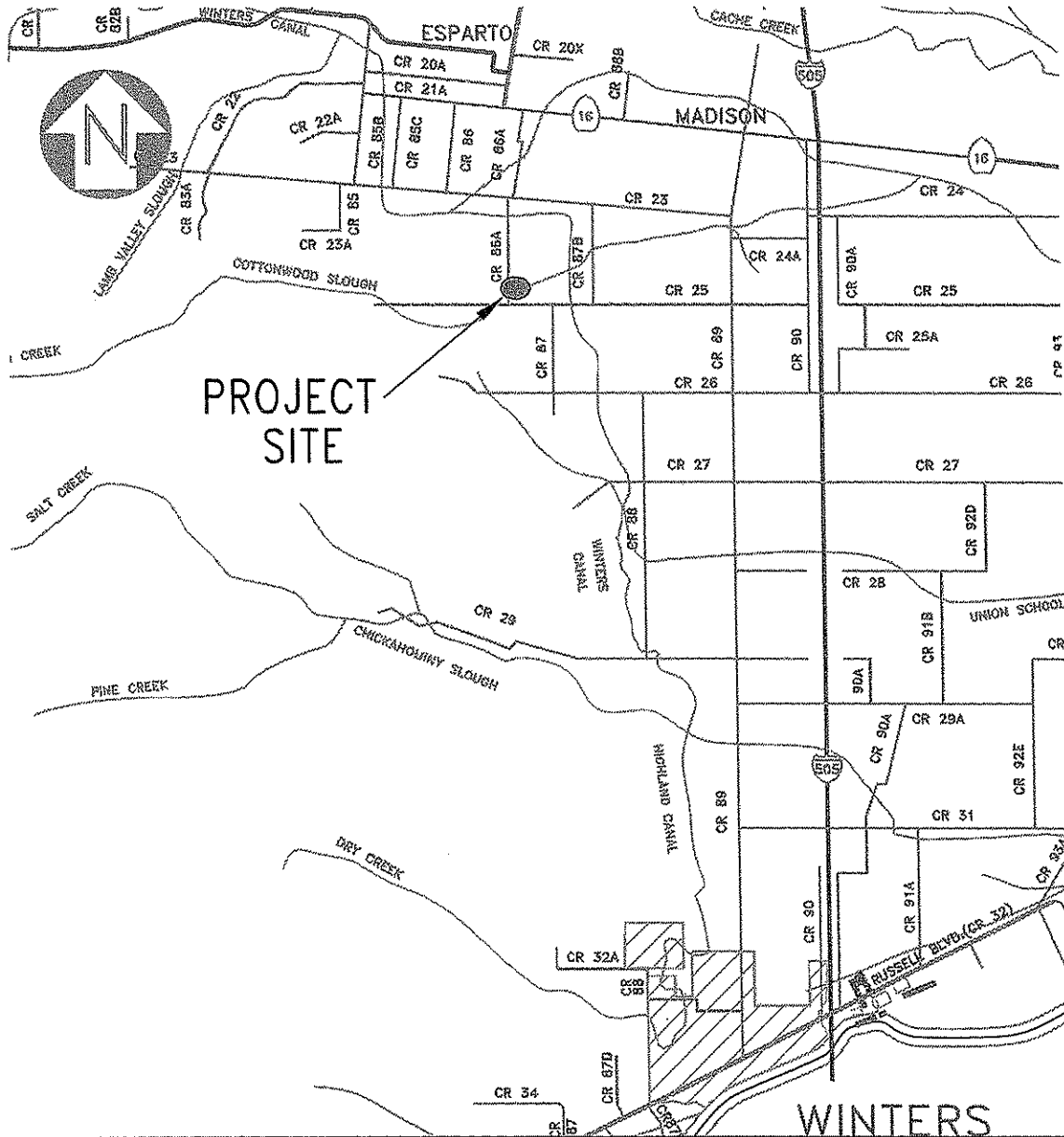
NOTES: 100% County Road fund.

ROAD FUND PROJECT SITE MAPS

PROJECT: 2a

ROAD NO. OR NAME: County Road 86A Bridge over Cottonwood Slough; Bridge Replacement

Bridge No.: 22C-0101



DESCRIPTION OF WORK: Preliminary Engineering & Environmental Studies

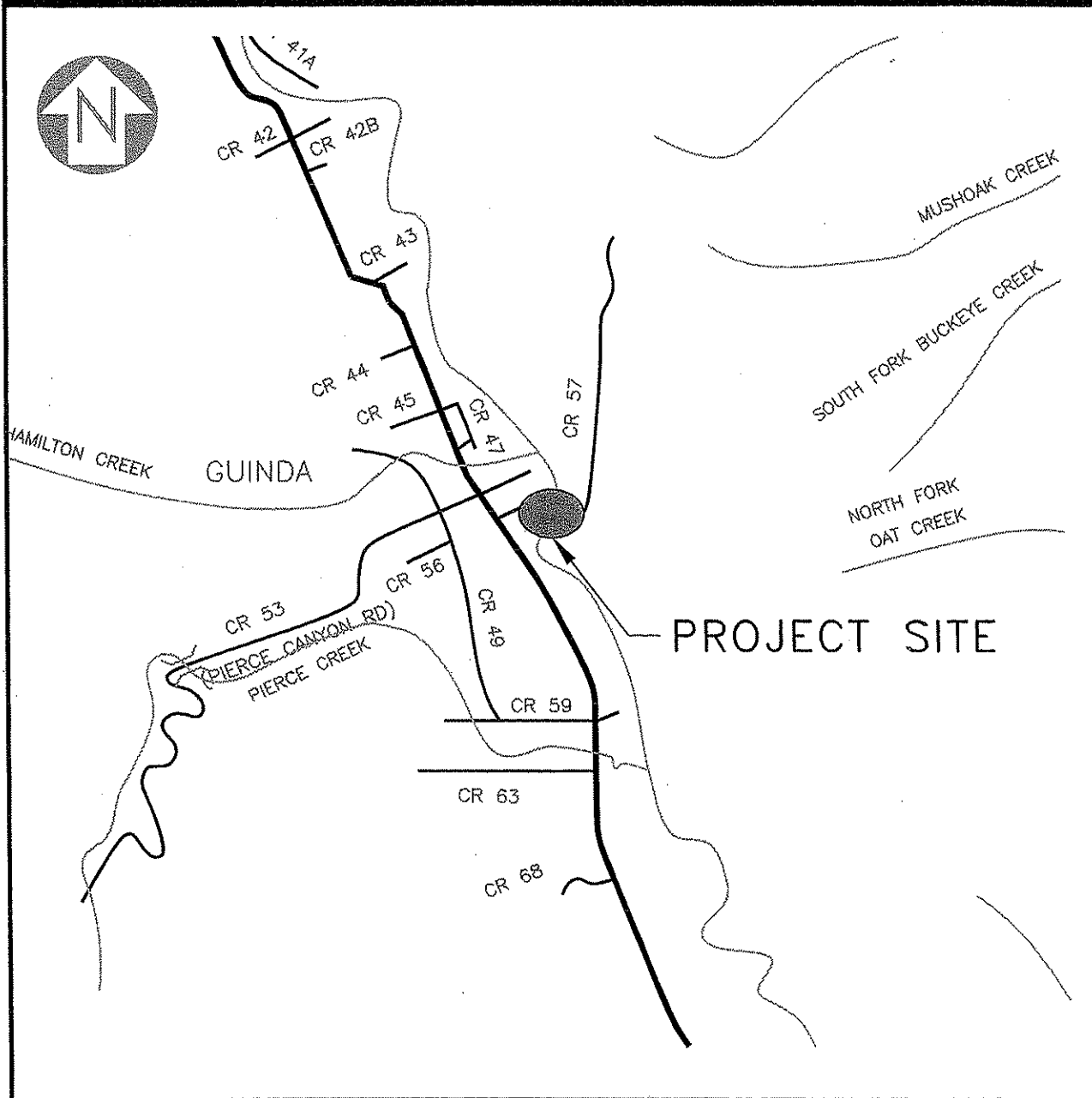
NOTES: 88.53% Reimbursement from Federal Funds, 11.47% from Proposition 1B.

ROAD FUND PROJECT SITE MAPS

PROJECT: 2b

ROAD NO. OR NAME: County Road 57 over Cache Creek (Guinda Bridge); Bridge Replacement

BRIDGE NO.: 22C-074



DESCRIPTION OF WORK: Construct Replacement Bridge

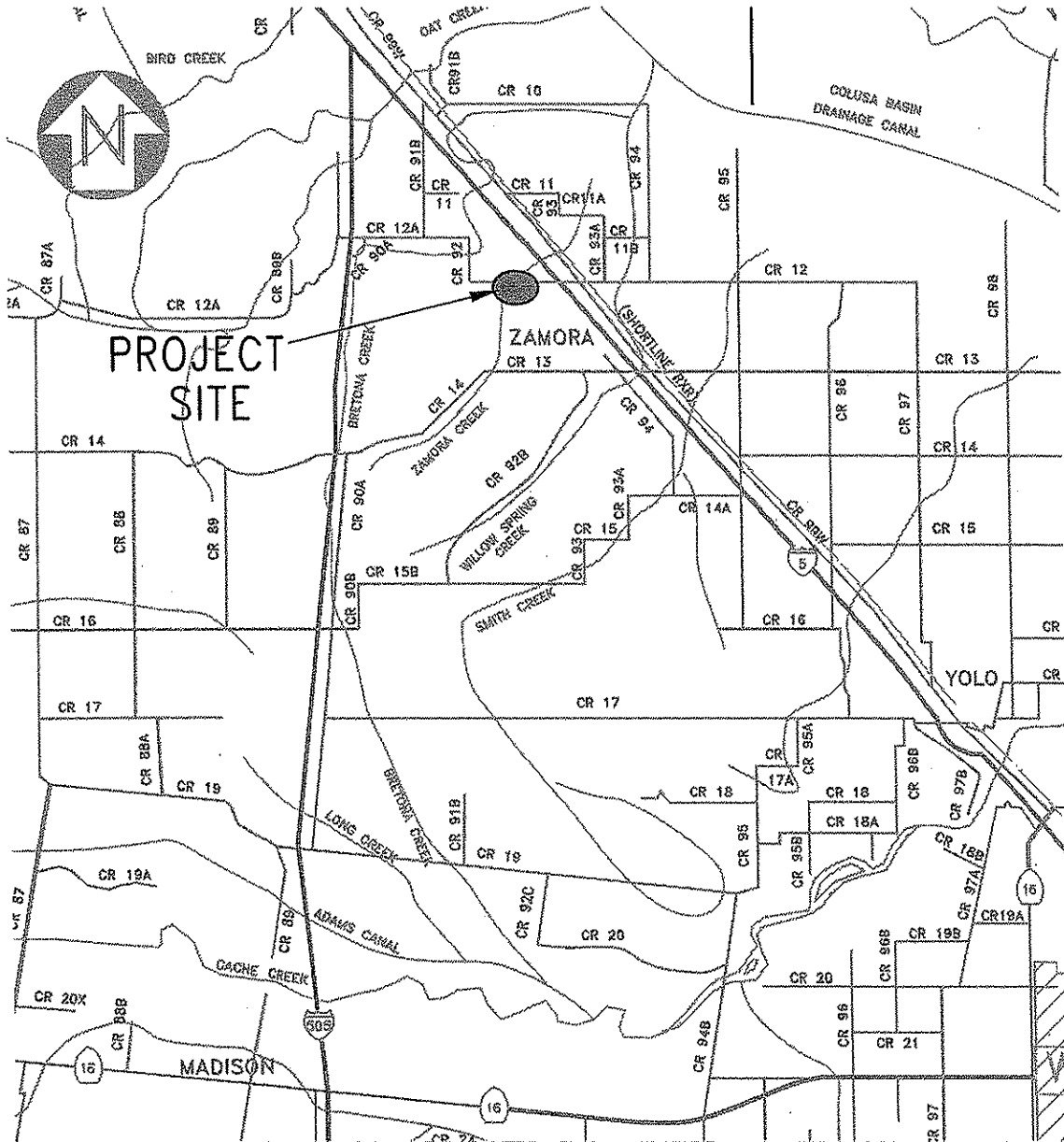
NOTES: 88.53% Reimbursement from Federal Fund, 11.47% from State Fund.

ROAD FUND PROJECT SITE MAPS

PROJECT: 2c

ROAD NO. OR NAME: County Road 12 Bridge over Zamora Creek; Bridge Replacement

Bridge No.: 22C-0130



DESCRIPTION OF WORK: Begin Preliminary Engineering & Environmental Studies

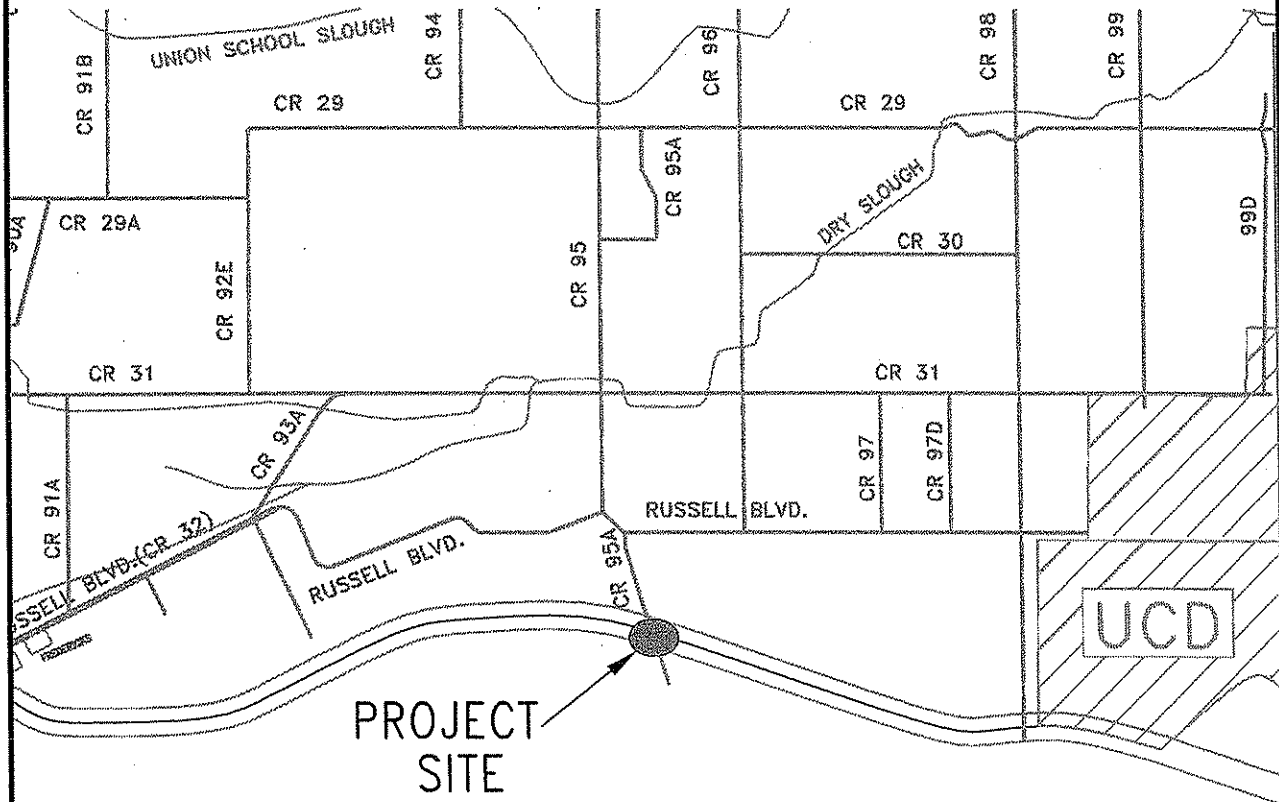
NOTES: 88.53% Reimbursement from Federal Funds, 11.47% from State Proposition 1B funds.

ROAD FUND PROJECT SITE MAPS

PROJECT 2d

ROAD NO. OR NAME: CR 95A (Stevenson's) Bridge over Putah Creek (Solano/Yolo Bridge);
Bridge Replacement

BRIDGE NO.: 23C-92



TERS

SOLANO COUN



DESCRIPTION OF WORK: Preliminary Engineering (Solano County is managing project.)

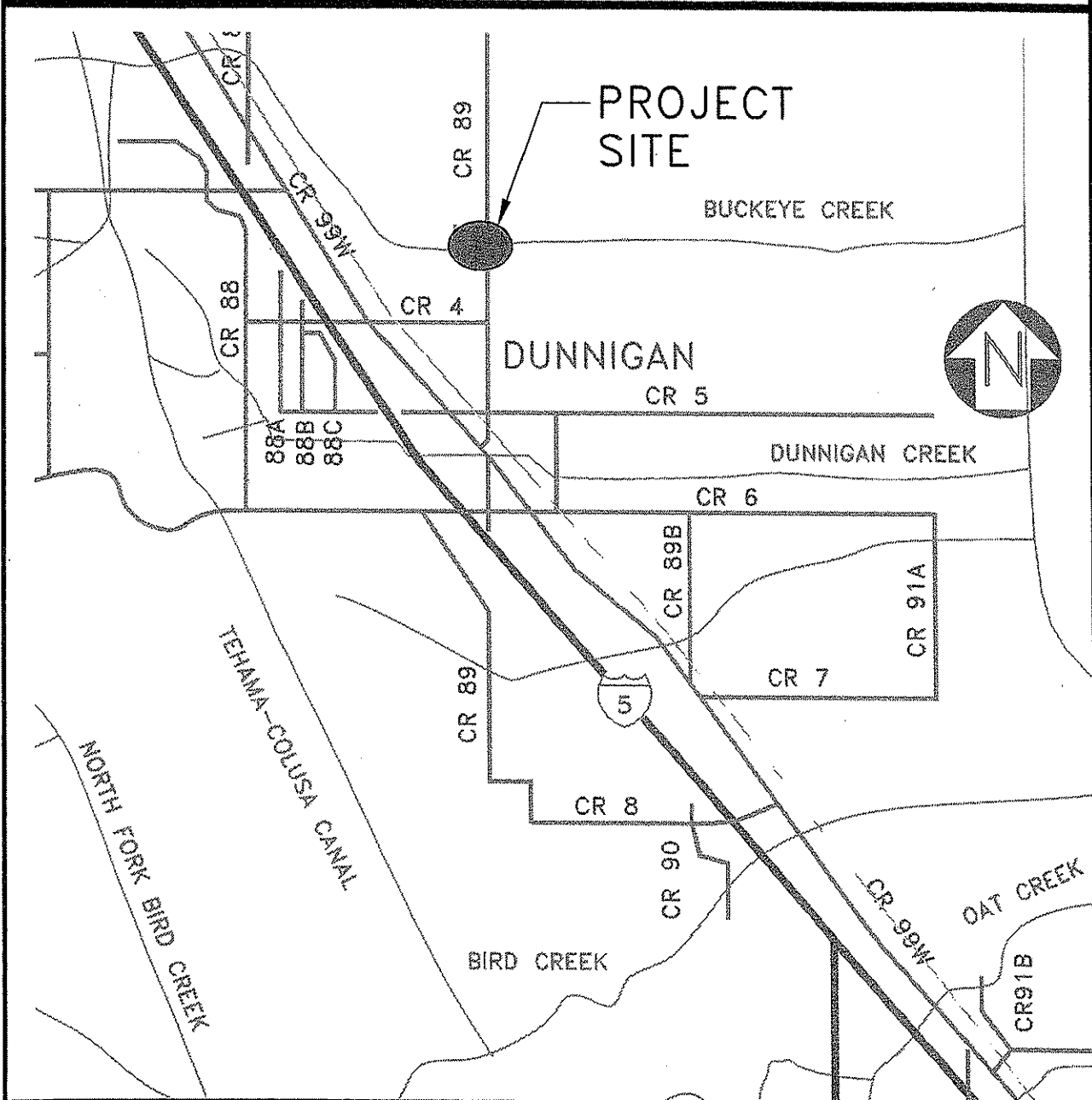
NOTES: Yolo County contributes 1/2 of local match from Road Fund, per Agreement 05-19.

ROAD FUND PROJECT SITE MAPS

PROJECT: 2e

ROAD NO. OR NAME: County Road 89 Bridge over Buckeye Creek; Bridge Replacement

BRIDGE NO.: 22C-135



DESCRIPTION OF WORK: Preliminary Engineering Phase

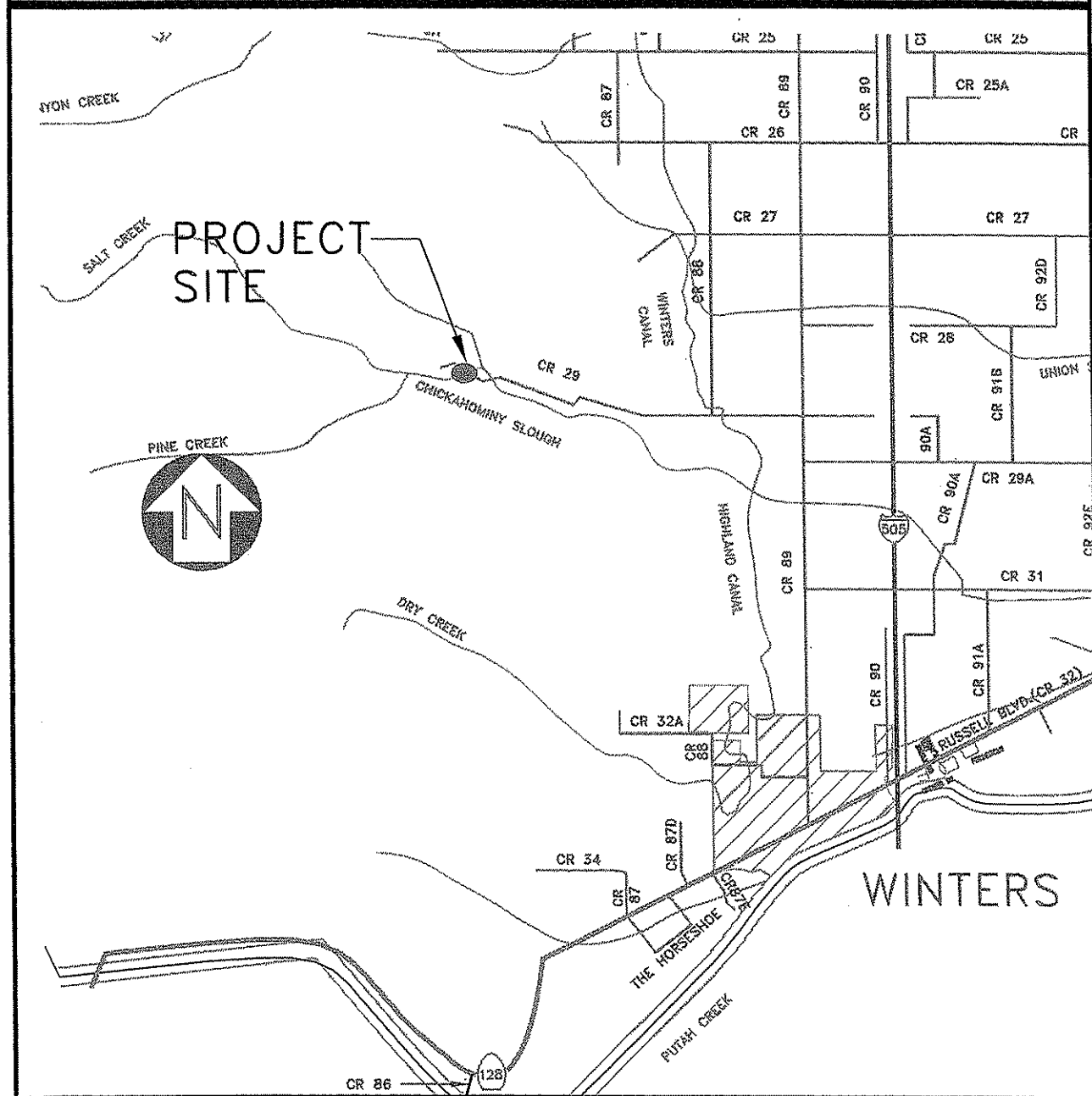
NOTES: 88.53% Reimbursement from Federal Funds, 11.47% from County Road Fund.

ROAD FUND PROJECT SITE MAPS

PROJECT: 2f

ROAD NO. OR NAME: County Road 29 Bridge over Salt Creek; Bridge Replacement

BRIDGE NO.: 22C-104



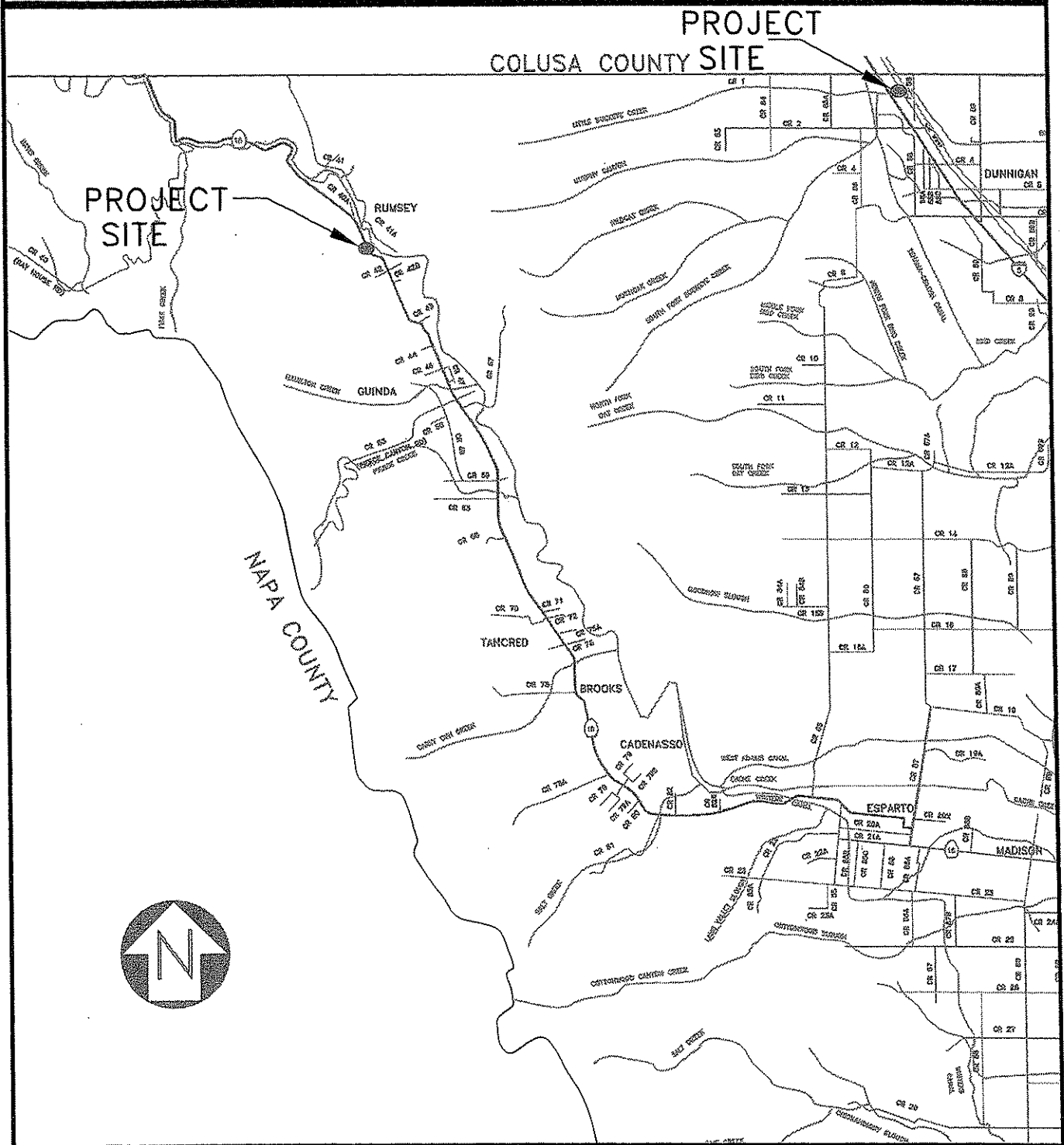
DESCRIPTION OF WORK: Preliminary Engineering & Right of Way Phases

NOTES: 88.53% Reimbursement from Federal Funds, 11.47% from County Road Fund.

ROAD FUND PROJECT SITE MAPS

PROJECT: 2g

ROAD NO. OR NAMES: Scour Counter Measures CR41/Cache, CR99W/Buckeye



DESCRIPTION OF WORK: Begin preliminary engineering for scour counter measures at 2 bridges.

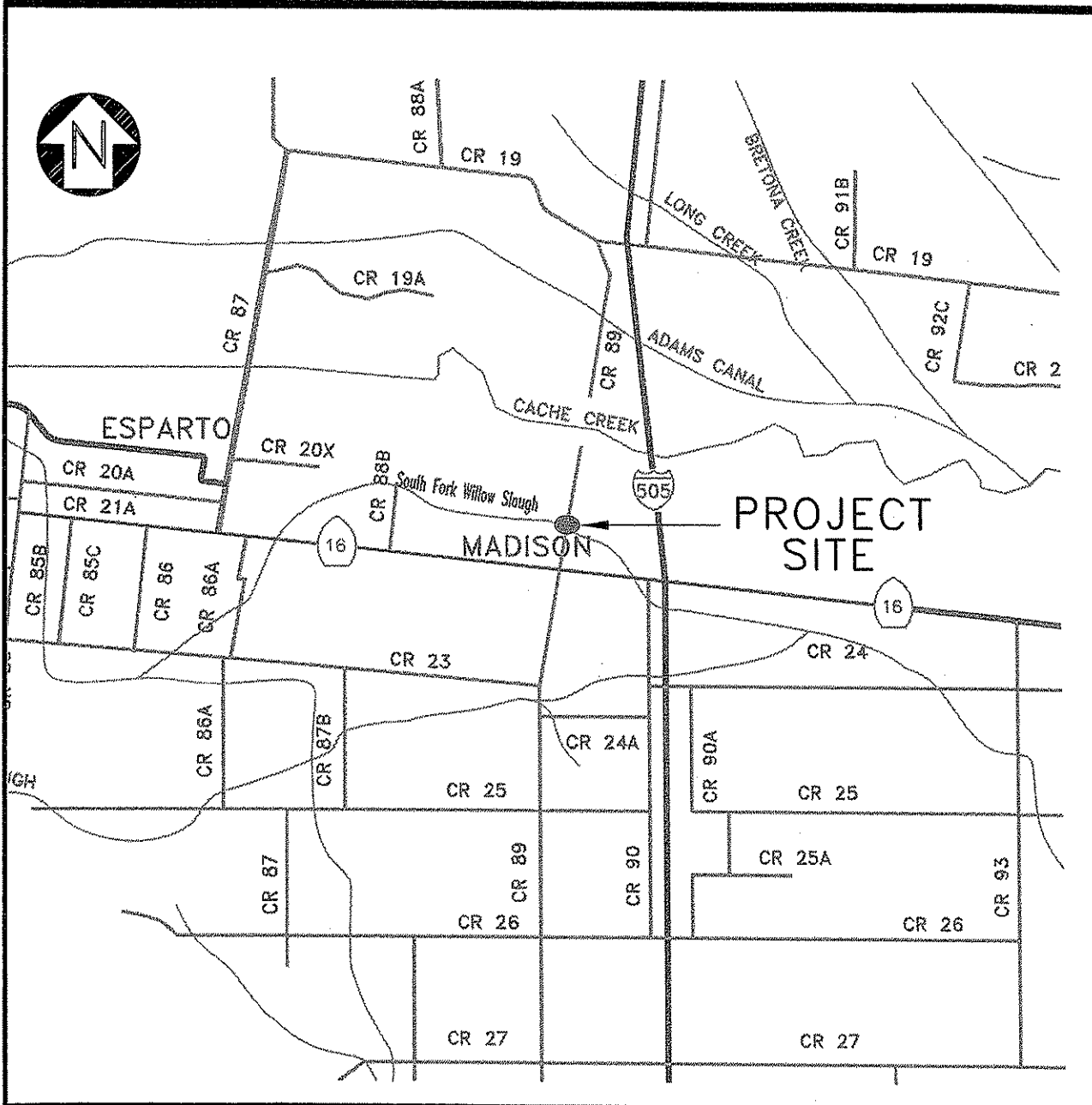
NOTES: 88.53% Reimbursement from Federal Funds, 11.47% from County Road Fund.

ROAD FUND PROJECT SITE MAPS

PROJECT 2h

ROAD NO. OR NAME: County Road 89 Bridge over South Fork Willow Slough; Habitat Restoration

BRIDGE NO. 22C-145



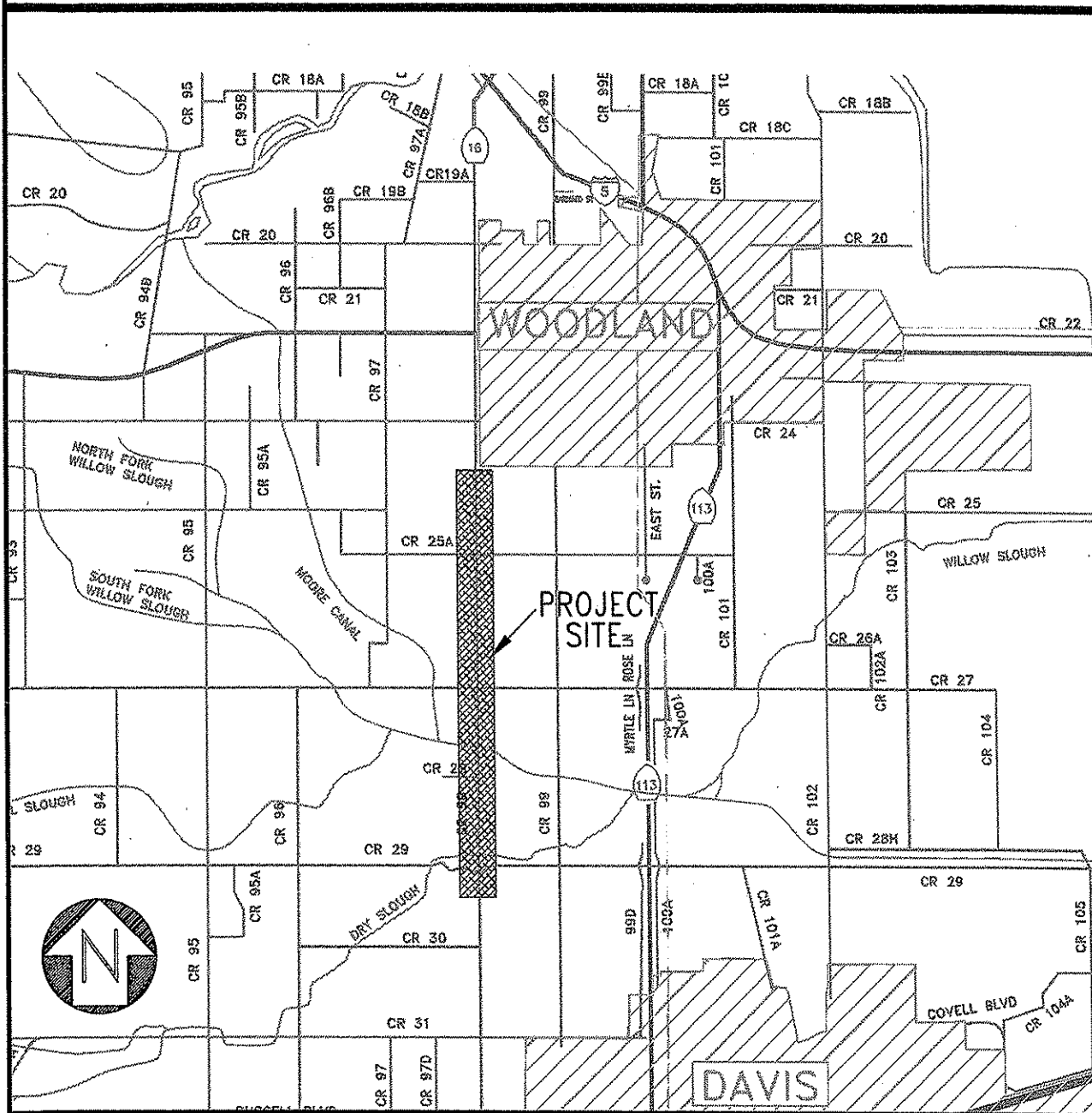
DESCRIPTION OF WORK: Bridge replacement project complete. Complete habitat restoration contract work.

NOTES: 88.53% Reimbursement from Federal Funds. 11.47% Local Match Will Be Funded By Syar.

ROAD FUND PROJECT SITE MAPS

PROJECT 3a

ROAD NO. OR NAME: County Road 98 Widening



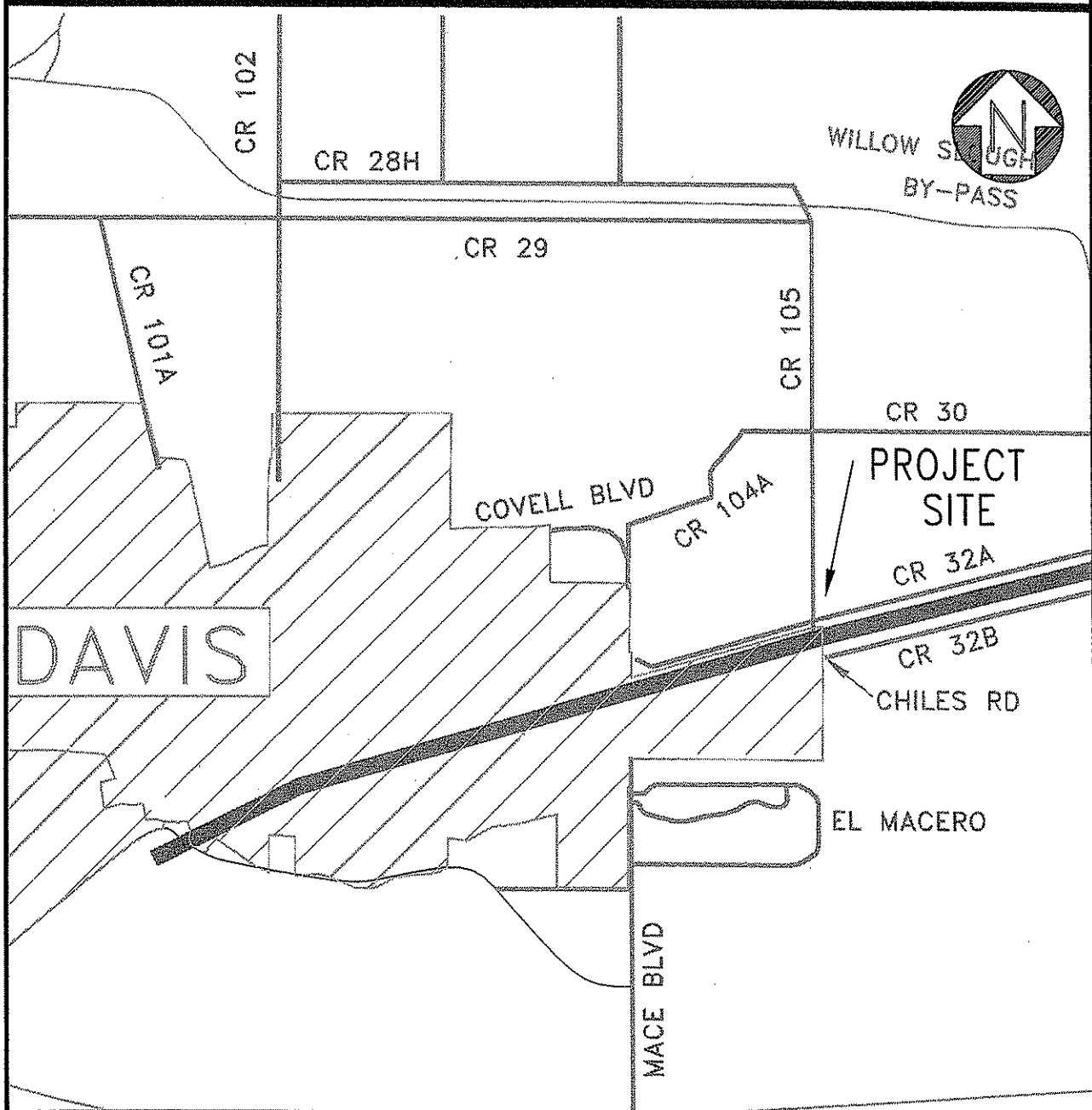
DESCRIPTION OF WORK: Complete appraisals and acquisition.

NOTES: Federal funds, State Proposition 1B funds, and County road funds.

ROAD FUND PROJECT SITE MAPS

PROJECT 3b

ROAD NO. OR NAME: County Road 32A/105 Railroad Crossing Guardrail Safety Project



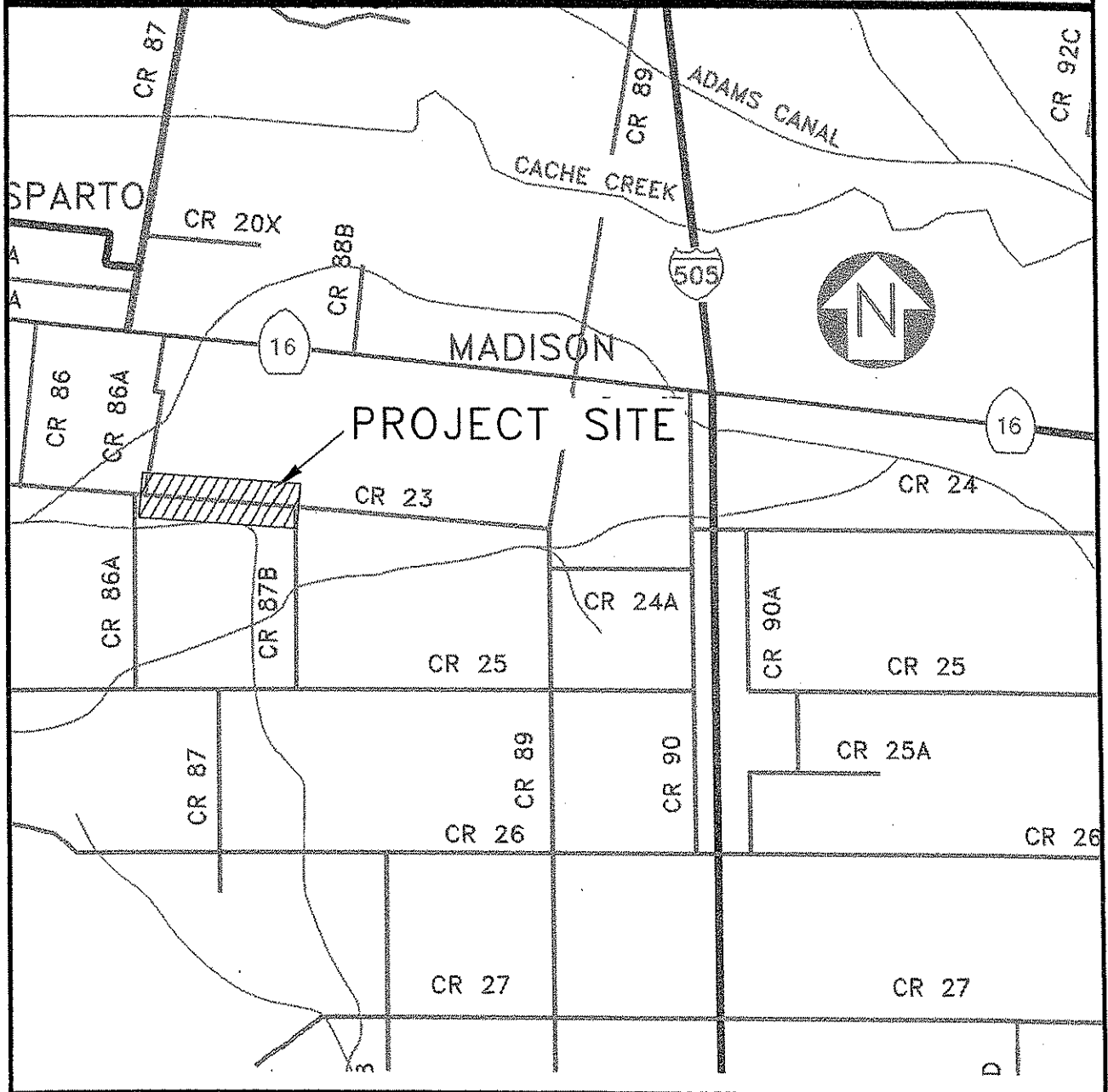
DESCRIPTION OF WORK: Begin preliminary engineering work to improve safety at railroad crossing.

NOTES: 100% federal funding (pending).

ROAD FUND PROJECT SITE MAPS

PROJECT: 3c

ROAD NO. OR NAME: County Road 23 Shoulder Widening between CR86A and CR87B.



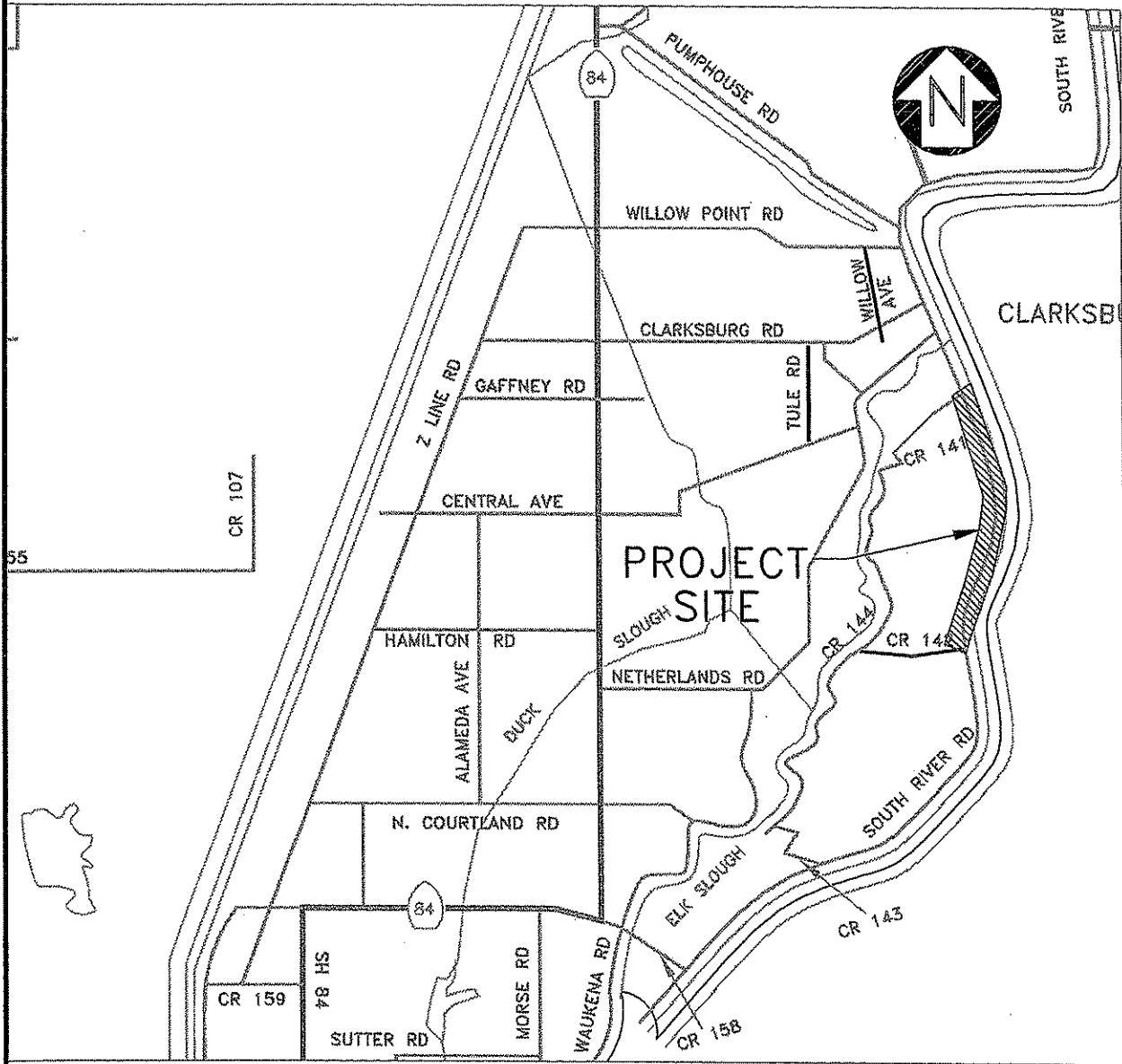
DESCRIPTION OF WORK: Construct County Road 23 Shoulder Widening Safety Improvement Project

NOTES: Reimbursement from Federal funds and State Proposition 1B funds.

ROAD FUND PROJECT SITE MAPS

PROJECT 3d

ROAD NO. OR NAME: County Road 140 Shoulder Widening between CR141 and CR142



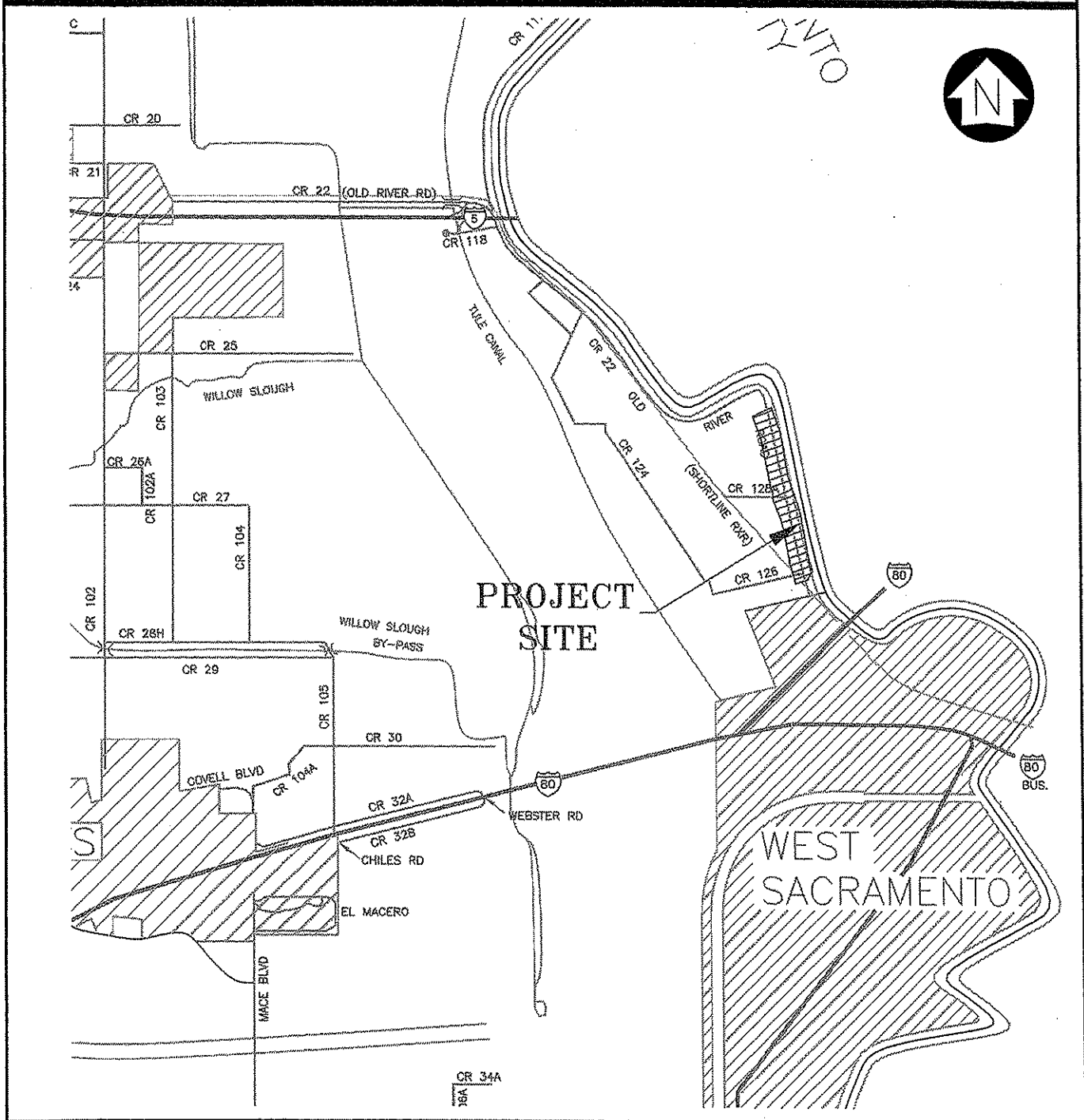
DESCRIPTION OF WORK: Construct Shoulder Widening Safety Improvement Project.

NOTES: Reimbursement from Federal funds and State Proposition 1B funds.

ROAD FUND PROJECT SITE MAPS

PROJECT: 3e

ROAD NO. OR NAME: County Road 22 Shoulder Widening & Proposition 1B Rehabilitation



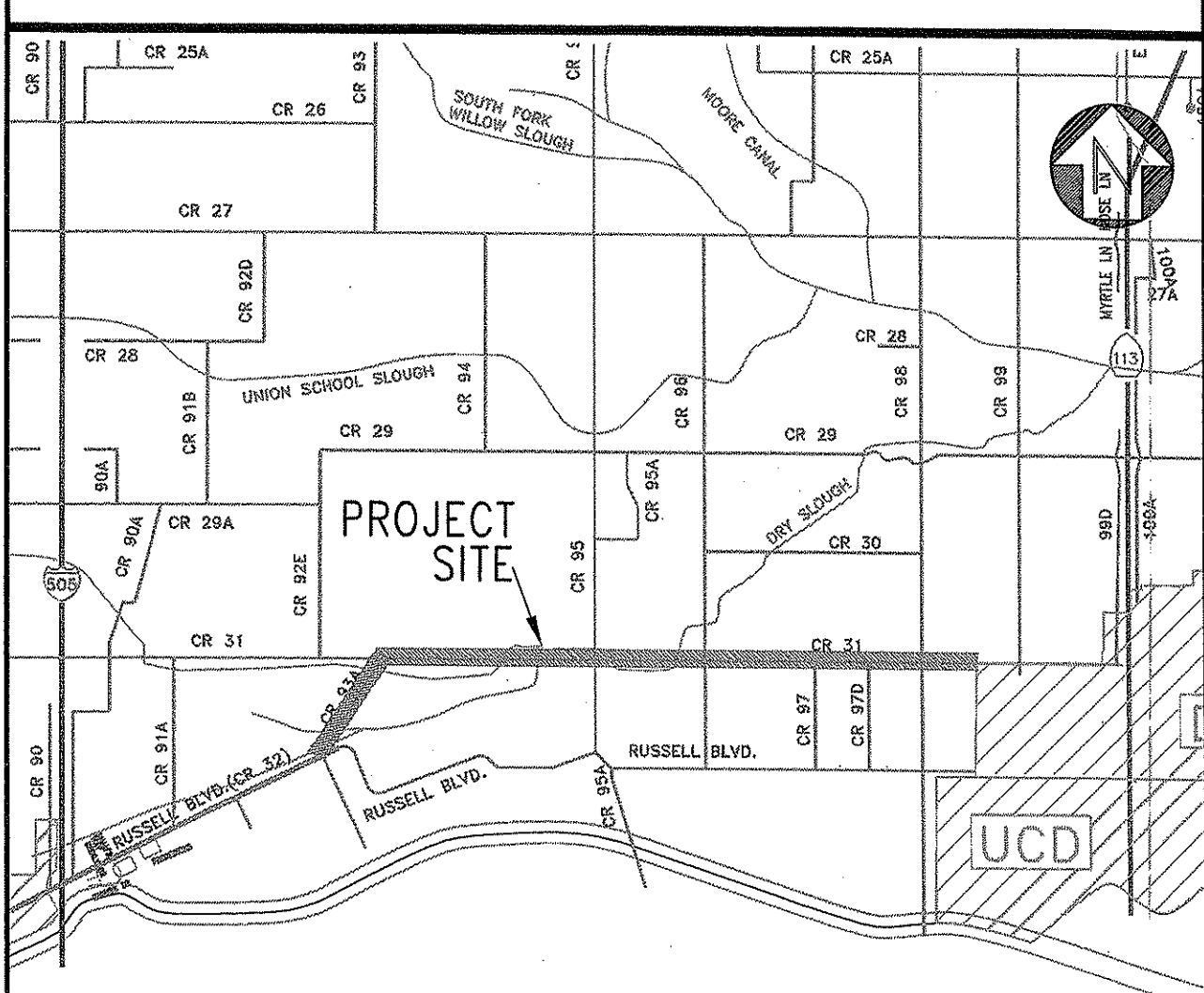
DESCRIPTION OF WORK: Complete preliminary engineering and environmental work, construct shoulder widening.

NOTES: Reimbursement from federal funds, and State Proposition 1B funds.

ROAD FUND PROJECT SITE MAPS

PROJECT 3f & 3g

ROAD NO. OR NAME: County Road 93A and 31 Rehabilitation



WINTERS

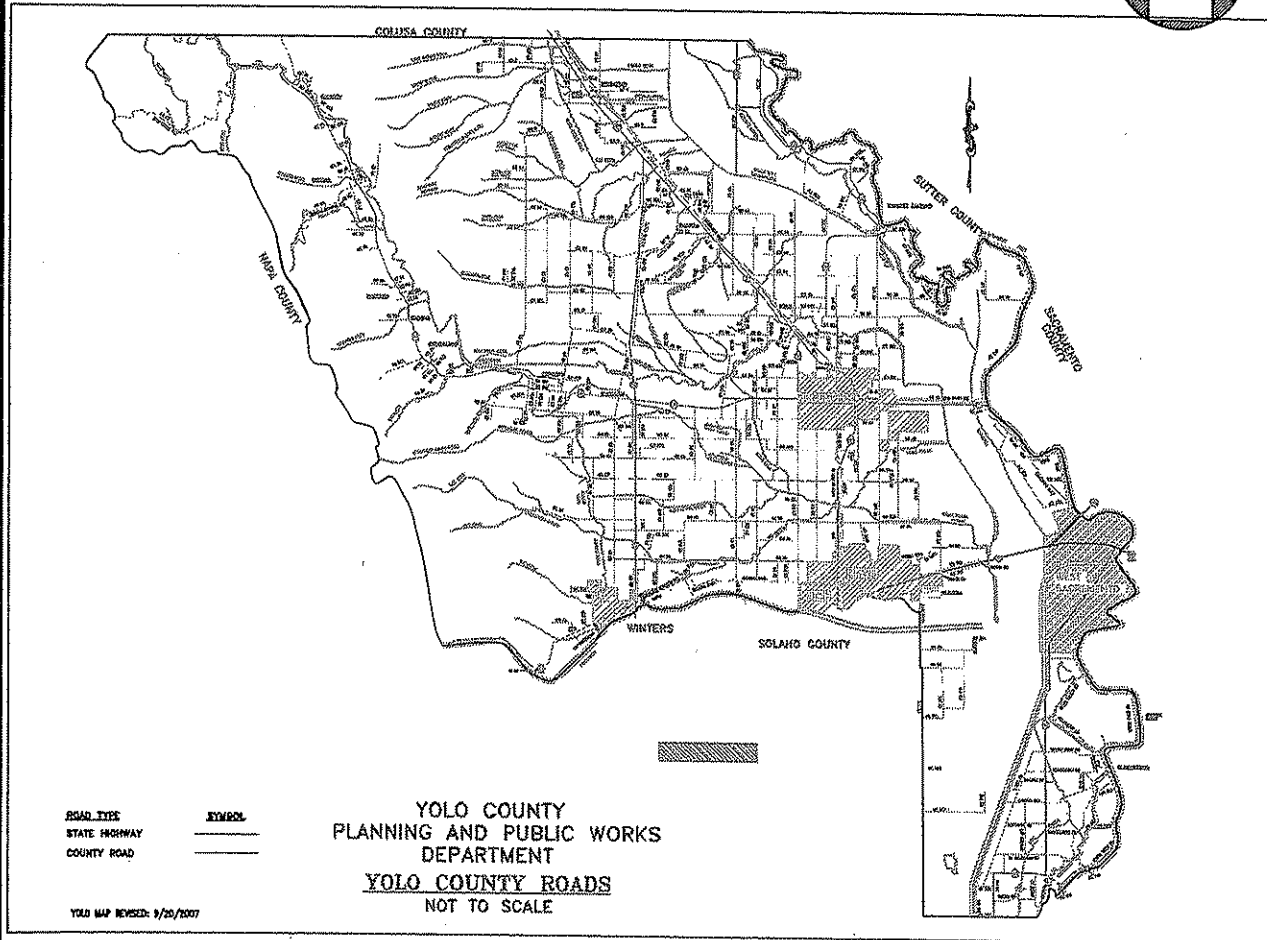
SOLANO COUNTY

DESCRIPTION OF WORK: Rehabilitate County Roads 93A and 31. The County Road 93A portion (Project 3g) is funded. The balance of the project (Project 3f) is budgeted in the event a second round of federal stimulus funding is approved.

ROAD FUND PROJECT SITE MAPS

PROJECT 3h

ROAD NO. OR NAME: Proposition 1B Sign Replacement Project



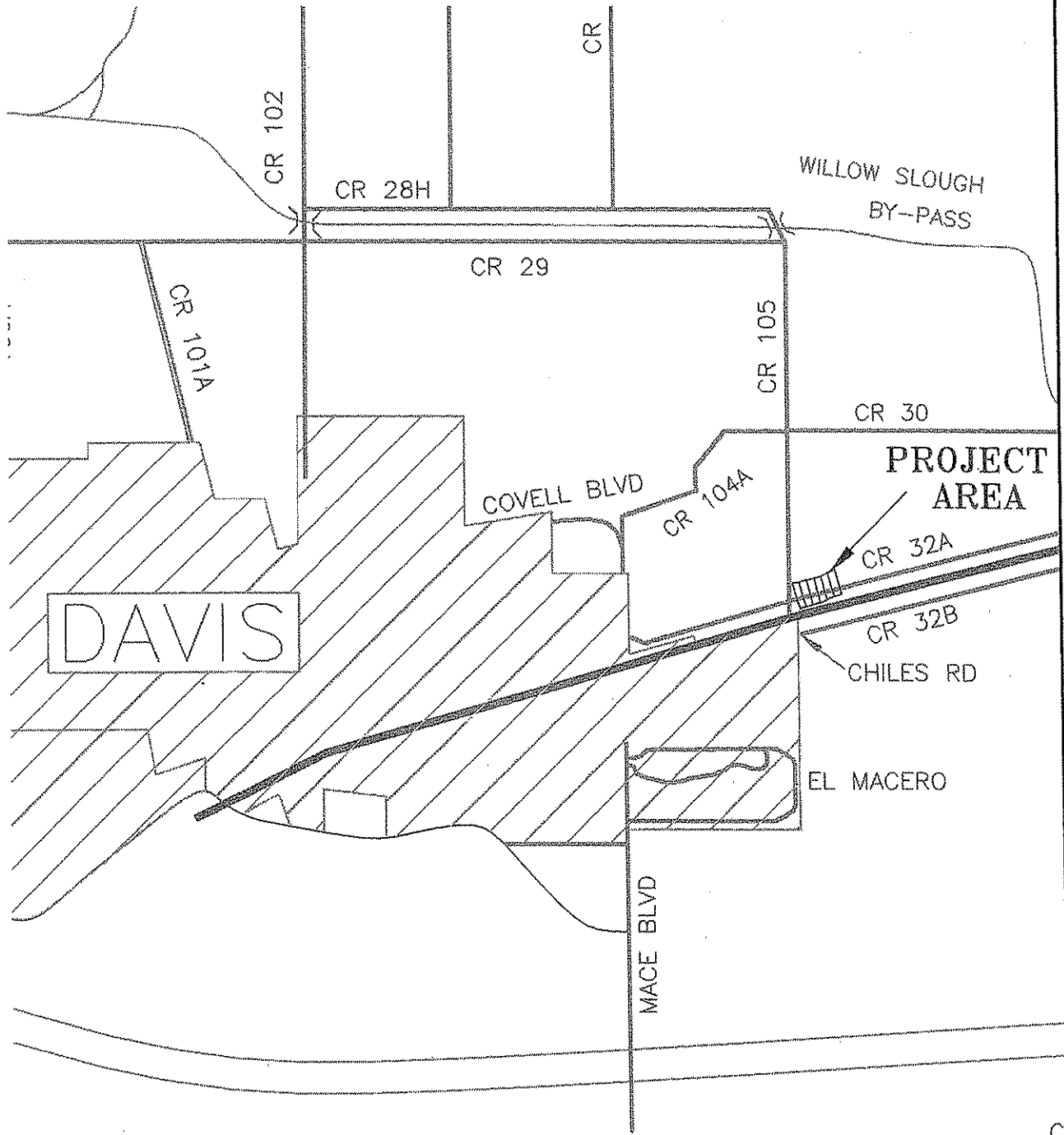
DESCRIPTION OF WORK: Replace signs throughout the County to meet the new reflectivity standards in the CA-MUTCD before the 2012 deadline for compliance.

NOTES: Funded with Proposition 1B funds.

ROAD FUND PROJECT SITE MAPS

PROJECT: 3i

ROAD NO. OR NAME: County Road 32A Rehabilitation



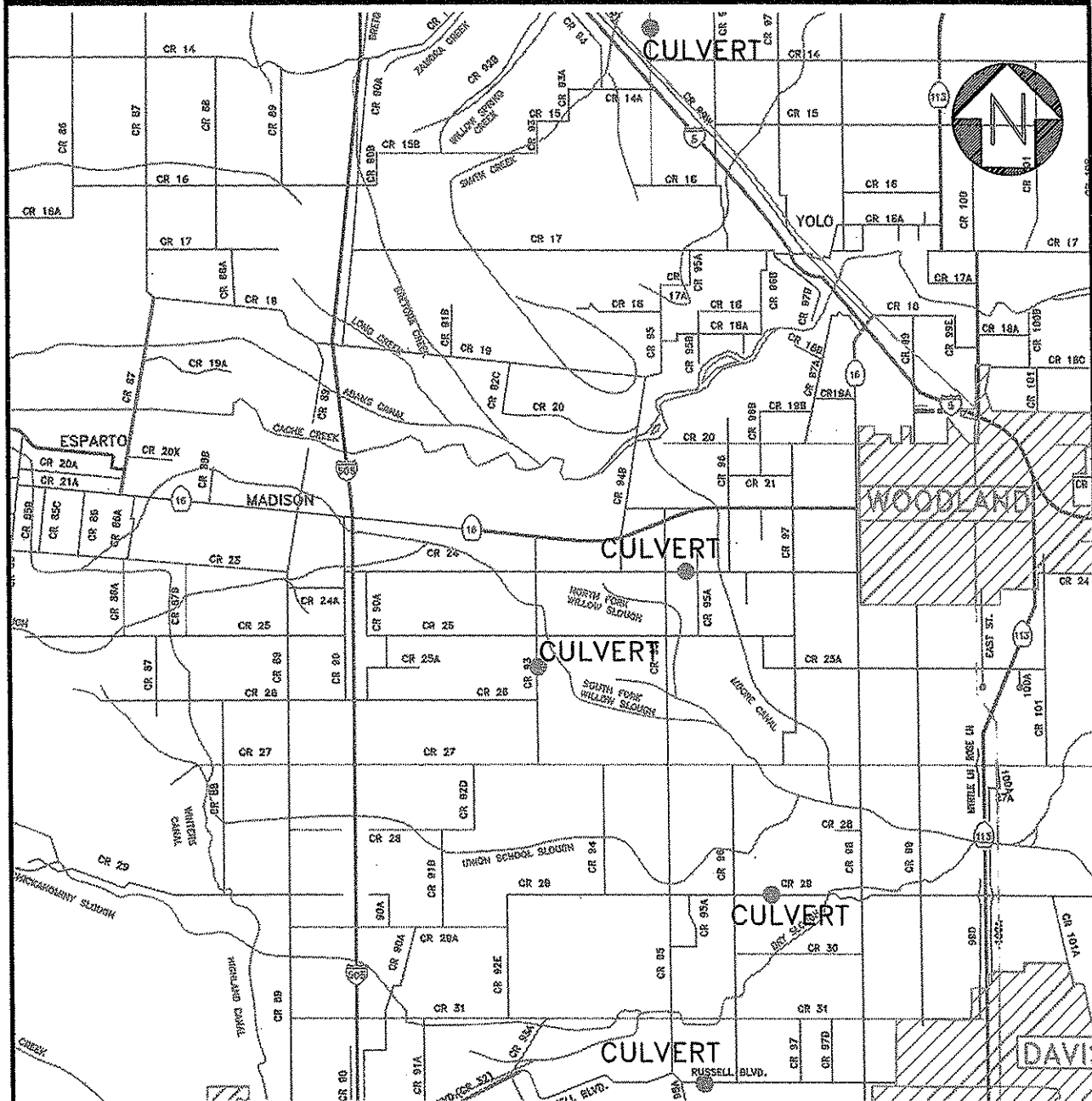
DESCRIPTION OF WORK: Preliminary Engineering and Construction to rehabilitate approximately 0.5 miles of road.

NOTES: Proposition 1B and County road funds.

ROAD FUND PROJECT SITE MAPS

PROJECT 4a & 4b

ROAD NO. OR NAME: Proposition 1B Culvert Replacement Projects



DESCRIPTION OF WORK: Replace failed culverts at various locations throughout the County.

NOTES: Funded with Proposition 1B funds.

