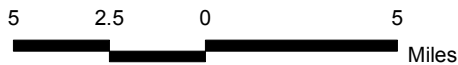


Source: Census 2000 Data, The CaSIL, MBA GIS 2012.





Michael Brandman Associates
17590009 • 08/2012 | A-1_regional.mxd

Exhibit A-1 Regional Location Map

NATIONAL PARKS SERVICE
COUNTY OF YOLO DEPARTMENT OF GENERAL SERVICES LAND RELEASE
ENVIRONMENTAL ASSESSMENT

Legend

-  Grasslands Site
-  Davis Communications Site; to be Annexed to Grasslands Regional Park



Source: ESRI Aerial, MBA Field Survey and GIS Data, 2012.



Michael Brandman Associates

17590009 • 08/2012 | A-2_local_vicinity_grasslands.mxd

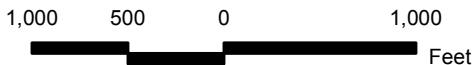


Exhibit A-2
Local Vicinity Map - Aerial Base
Grasslands Site



Source: Michael Brandman Associates 2012.

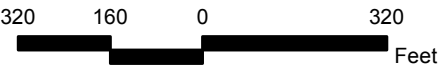


Exhibit A-3
Photograph Vantage Points
Grasslands Site



Photograph 1: View facing project site to the west, along County Road 35.



Photograph 2: View facing project site facing southeast, at the intersection of County Road 104 and County Road 35.

Source: Michael Brandman Associates 2012.



Michael Brandman Associates

17590009 • 08/2012 | A-4_site_photos1and2.mxd

Exhibit A-4 Key Observation Points 1-2 Grasslands Site

NATIONAL PARKS SERVICE
COUNTY OF YOLO DEPARTMENT OF GENERAL SERVICES LAND RELEASE
ENVIRONMENTAL ASSESSMENT



Photograph 3: View facing project from residence along County Road 104, facing east.



Photograph 4: View facing project site facing northwest, from the Sacramento Soaring Society Airfield.

Source: Michael Brandman Associates 2012.

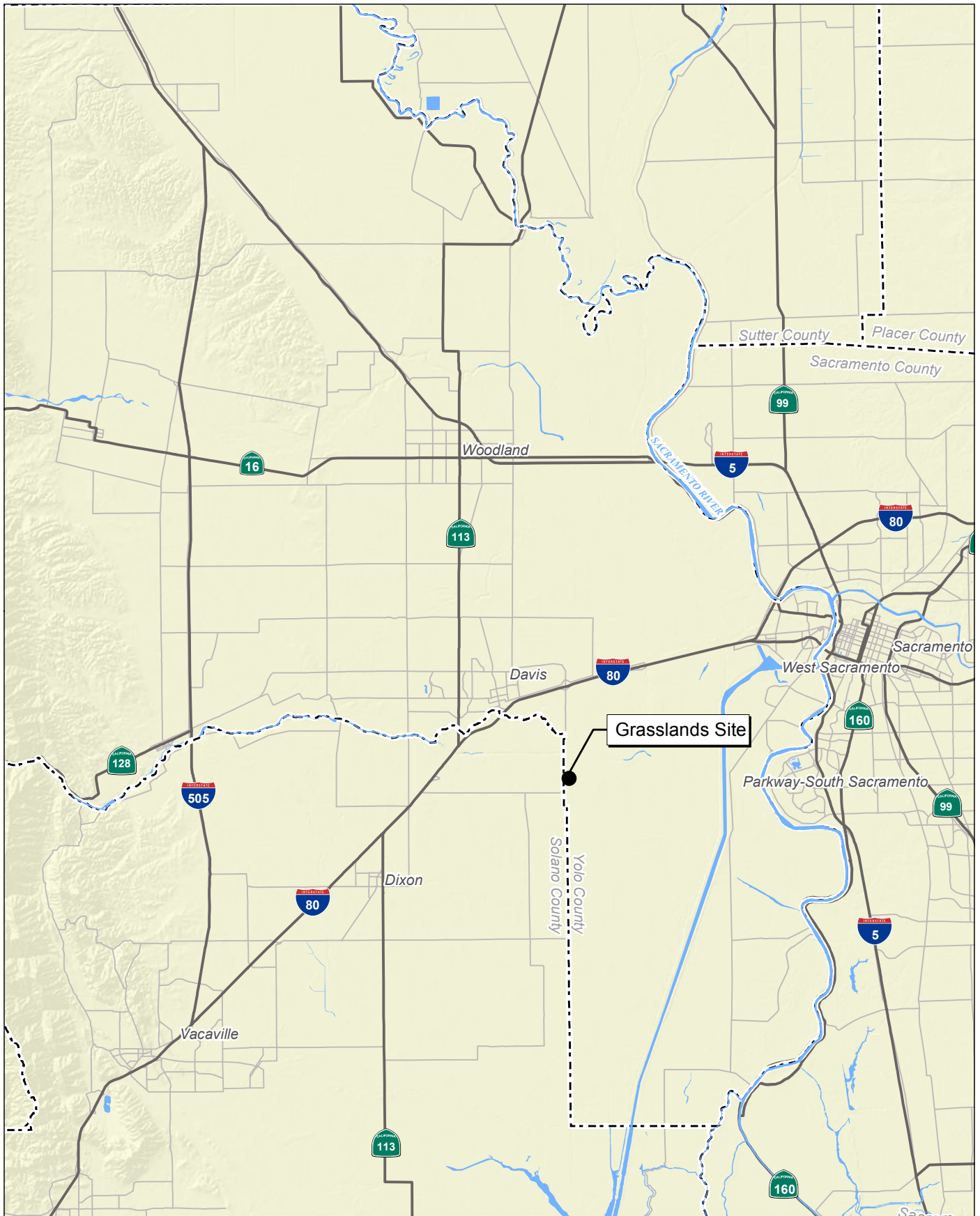


Michael Brandman Associates

17590009 • 08/2012 | A-5_site_photos3and4.mxd

Exhibit A-5
Key Observation Points 3-4
Grasslands Site

NATIONAL PARKS SERVICE
COUNTY OF YOLO DEPARTMENT OF GENERAL SERVICES LAND RELEASE
ENVIRONMENTAL ASSESSMENT



Source: Census 2000 Data, The CaSIL, MBA GIS 2012.



Michael Brandman Associates

17590009 • 08/2012 | A-6_regional_hydrology.mxd

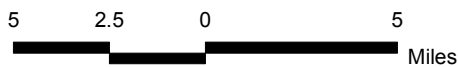
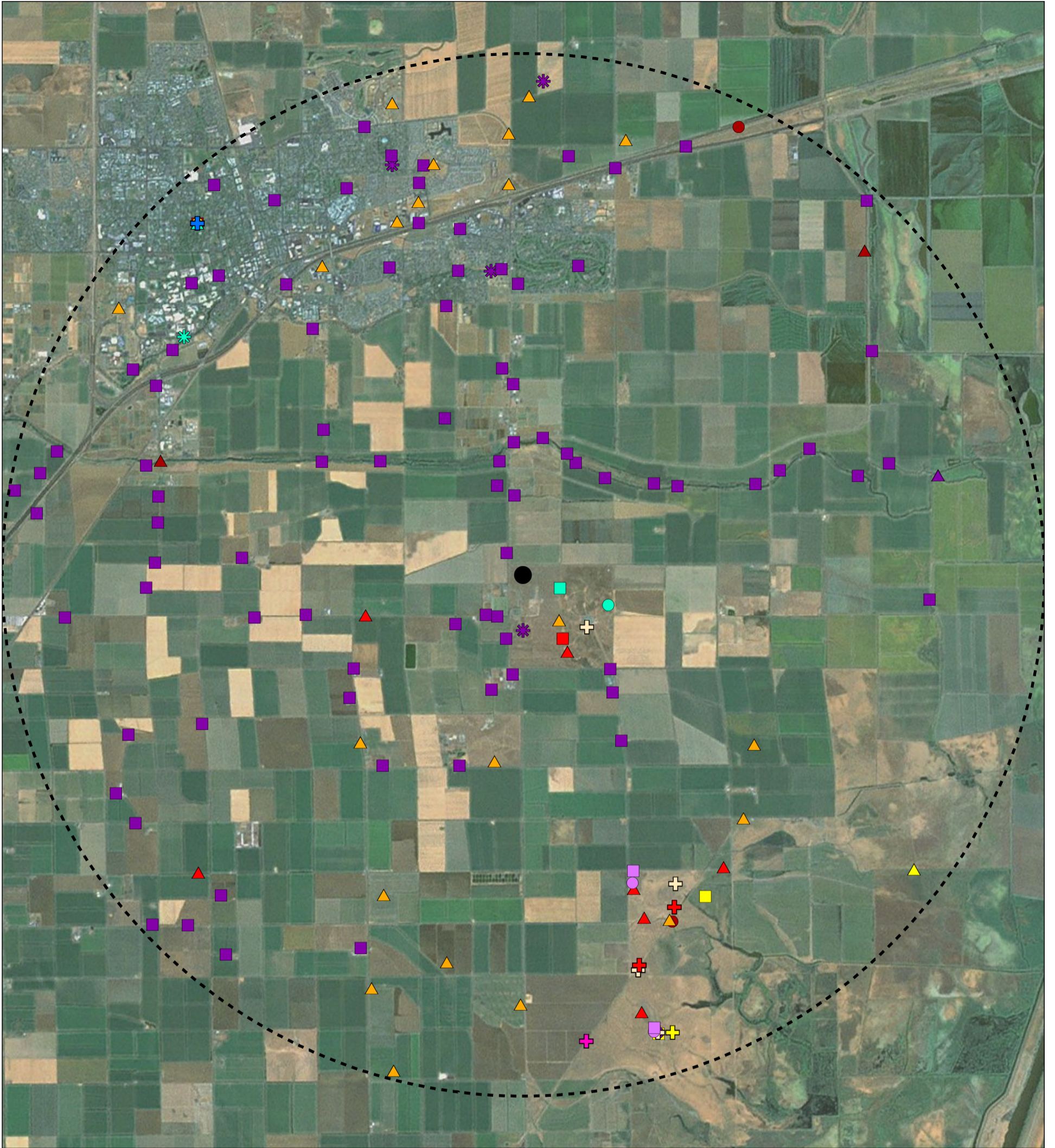


Exhibit A-6 Regional Hydrology

NATIONAL PARKS SERVICE
 COUNTY OF YOLO DEPARTMENT OF GENERAL SERVICES LAND RELEASE
 ENVIRONMENTAL ASSESSMENT



Source: ESRI Aerial Imagery. CNDDDB Data, July 2012.

Legend					
	Grasslands Site				
	Grasslands 5-mile Buffer				
Common Name - Scientific Name					
	American badger - <i>Taxidea taxus</i>		Ferris' milk-vetch - <i>Astragalus tener</i> var. <i>ferrisiae</i>		least Bell's vireo - <i>Vireo bellii pusillus</i>
	Antioch multilid wasp - <i>Myrmosula pacifica</i>		Heckard's pepper-grass - <i>Lepidium latipes</i> var. <i>heckardii</i>		midvalley fairy shrimp - <i>Branchinecta mesovallensis</i>
	Baker's navarretia - <i>Navarretia leucocephala</i> ssp. <i>bakeri</i>		Sacramento Valley tiger beetle - <i>Cicindela hirticollis abrupta</i>		pallid bat - <i>Antrozous pallidus</i>
	California linderiella - <i>Linderiella occidentalis</i>		San Joaquin spearscale - <i>Atriplex joaquinana</i>		saline clover - <i>Trifolium hydrophilum</i>
	Colusa grass - <i>Neostapfia colusana</i>		Swainson's hawk - <i>Buteo swainsoni</i>		silver-haired bat - <i>Lasionycteris noctivagans</i>
	Conservancy fairy shrimp - <i>Branchinecta conservatio</i>		alkali milk-vetch - <i>Astragalus tener</i> var. <i>tener</i>		vernal pool fairy shrimp - <i>Branchinecta lynchi</i>
	Crampton's tuctoria or Solano grass - <i>Tuctoria mucronata</i>		bearded popcorn-flower - <i>Plagiobothrys hystriculus</i>		vernal pool tadpole shrimp - <i>Lepidurus packardi</i>
			burrowing owl - <i>Athene cucularia</i>		western pond turtle - <i>Emys marmorata</i>
			giant garter snake - <i>Thamnophis gigas</i>		white-tailed kite - <i>Elanus leucurus</i>
			hoary bat - <i>Lasiurus cinereus</i>		

Exhibit A-7
 CNDDDB-Recorded Occurrences of
 Special-Status Species Within Five Miles of the
 Grasslands Project Site