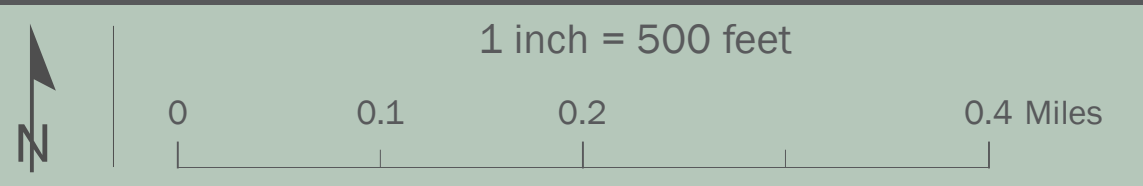
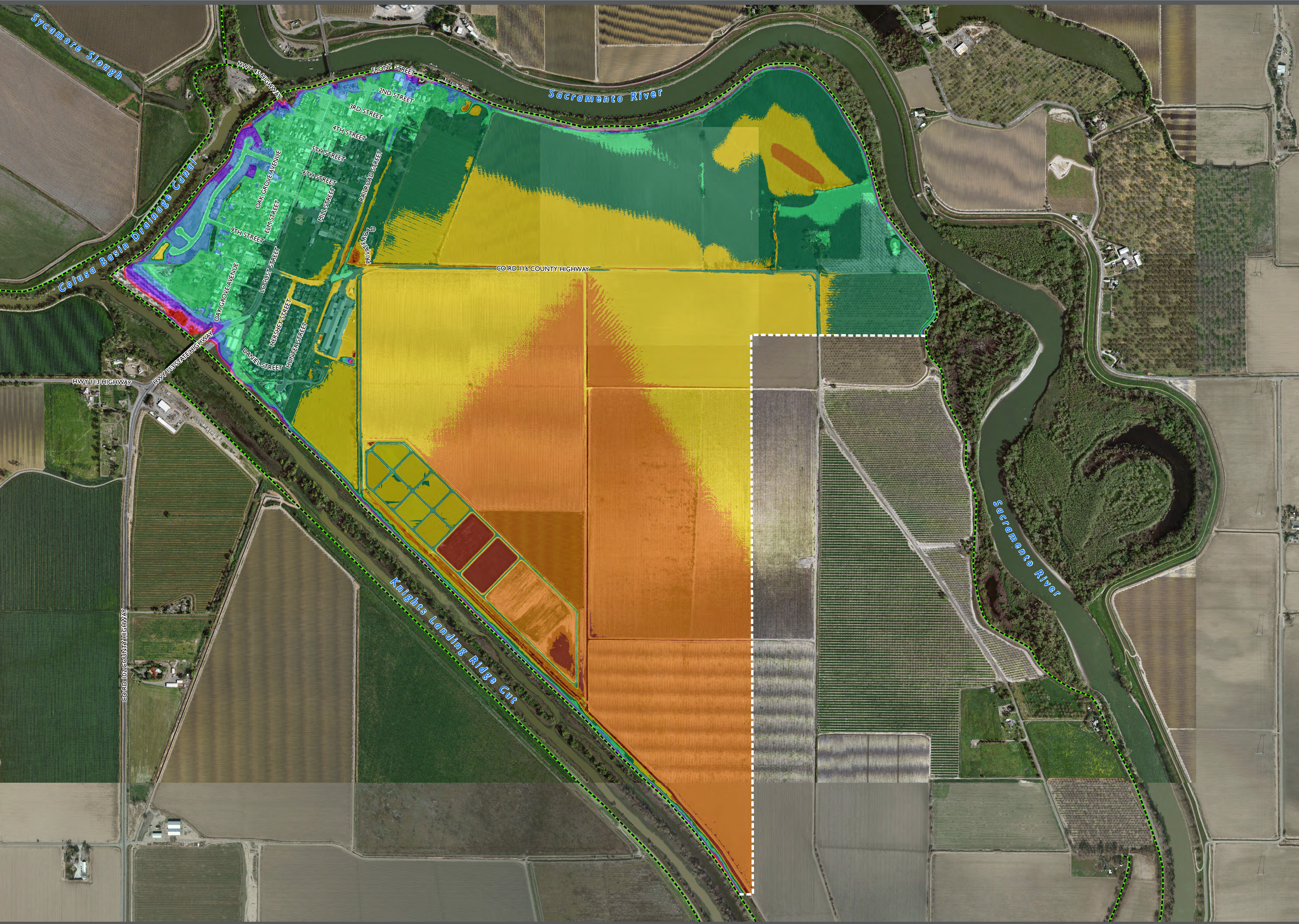


Legend

- Levee
- Analysis Boundary
- 1% Annual Chance Flood Depths
 - < 1.0'
 - 1.0' - 2.0'
 - 2.1' - 4.0'
 - 4.1' - 6.0'
 - 6.1' - 9.0'
 - 9.1' - 12.0'
 - 12.1' - 15.0'
 - 15.1' - 18.0'
 - > 18.0'

Topographic and Imagery Data Source: Central Valley Floodplain, Evaluation, and Delineation (CVFED) project LIDAR data and aerial imagery. CVFED imagery supplemented with Bing imagery.

1% Annual Chance flood depths determined from 42.17' NAVD88 BFE. September 2006 Levee Breach Analysis Report by MBK Engineers estimates 39.7' NGVD29 BFE. NAVD88 BFE determined using +2.47' vertical datum conversion value from 5/16/2012 Yolo County FIS.



North American Datum 1983
Universal Transverse Mercator Zone 10N (Feet)
North American Vertical Datum 1988