

RESOLUTION № 2013-02

**Approving the Davis Cemetery District Change of Organization (LAFCO № 915),
Initiating Conducting Authority Proceedings and Setting April 25, 2013 as the
Hearing Date to Conduct Protest Proceedings**

WHEREAS, on October 17, 2012 the Davis Cemetery District (District) Board of Trustees adopted a resolution initiating a proposal to annex approximately 126,130 acres to the District; and

WHEREAS, on January 7, 2013 the District submitted an application to Yolo Local Agency Formation Commission (LAFCo) for Change of Organization for the subject territory; and

WHEREAS, the District is not seeking any property tax revenue for the subject territory and waived its right to a tax exchange, therefore the project is not subject to a negotiated exchange per Revenue and Taxation Code Section 99(b)(3); and

WHEREAS, the project was routed to all subject, affected and interested agencies and 1/8th page public notices were published in the Davis Enterprise and West Sacramento News Ledger; and

WHEREAS, a Certificate of Filing was issued on March 18, 2013; and

WHEREAS, the project was analyzed in accordance with all applicable sections of the Cortese-Knox-Hertzberg Act, LAFCo Standards of Evaluation and all other matters presented as prescribed by law; and

WHEREAS, the Executive Officer reviewed the proposal and prepared and filed a report with recommendations with this Commission at least five (5) days prior to the date of the March 28, 2013 meeting during which the project was set to be considered; and

WHEREAS, an opportunity was given to all interested persons, organizations, and agencies to present oral or written testimony, protests, objections, and any other information concerning the proposal and all related matters; and

WHEREAS, at said meeting, the Commission reviewed and considered the CEQA documentation and the Executive Officer's Report including all the information, recommendations, findings and conditions contained therein; and

NOW, THEREFORE, BE IT RESOLVED that the Yolo Local Agency Formation Commission approves the Davis Cemetery District Change of Organization (LAFCO № 915) as shown in Attachment A, initiates conducting authority proceedings and sets April 25, 2013 as the hearing date to conduct protest proceedings subject to the following findings and conditions of approval:

Findings

CEQA

1. **Finding:** The Davis Cemetery District Change of Organization (annexation) (LAFCo № 915) is exempt from review under the California Environmental Quality Act (CEQA) pursuant to Section 15061 (b)(3) of the CEQA Guidelines.

Evidence: The project does not involve any land use changes and will not result in the physical construction of any infrastructure or other improvements to provide burial services. All services will be provided at the existing cemetery located in the City of Davis and it has sufficient capacity to serve the additional territory. Therefore, there is no possibility that the project may have an impact on the environment and is therefore, not subject to CEQA.

Project Findings (in Accordance with Government Code Section 56668.3)

2. **Finding:** The annexation will be for the interest of present and future landowners and inhabitants within the territory to be annexed.

Evidence: The proposed annexation will be relatively benign for residents and landowners in the subject territory as the annexation will not affect property taxes and merely provides residents with an option for public cemetery services that they currently do not have. Therefore, the annexation would be for the interest of present and future landowners and inhabitants within the territory to be annexed.

3. **Finding:** No resolutions raising objections have been filed by an affected agency regarding the proposed project.

Evidence: LAFCo has not received any objections (resolutions or otherwise) filed by an affected or interested agency regarding the proposed project. No objections from any landowners or the general public have been received.

4. **Finding:** The Davis Cemetery District has adequate services to meet the existing and probable future needs of the territory.

Evidence: The Davis Cemetery is 27 acres in size and only 12 acres is currently developed for burial plots and access with capacity remaining. Therefore, there is adequate services and capacity to meet the future needs of the territory

Conditions of Approval

1. The applicant and the real party of interest, if different, agree to defend, indemnify, hold harmless and release the Yolo County Local Agency Formation Commission, its agents, officers, attorney and employees from any claim, action or proceeding brought against any of them, the purpose of which to attack, set aside, void, or annul the approval of this application or adoption of the environmental review which accompanies it. This indemnification obligation shall include, but not be limited to, damages, costs, expenses, attorney fees, or expert witness fees that may be asserted by any person or entity, including the applicant, arising out of or in connection with the approval of this application, whether or

not there is concurrent passive negligence of the part of the Yolo County Local Agency Formation Commission its agents, officers, attorney or employees.

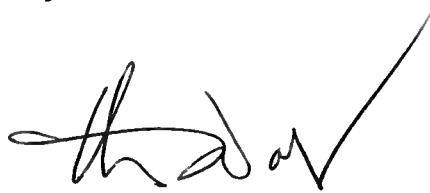
2. Project approval is subject to Conducting Authority Proceedings and a Protest Hearing set for April 25, 2013. If less than 25 percent of the registered voters or landowners in the subject territory protest the annexation, then the Commission will order the Change of Organization (annexation) and staff will complete the project accordingly.
3. The project will be subject to all appropriate LAFCo, State Board of Equalization and County fees, including the Clerk-Recorder and Surveyor, prior to recording of the Certificate of Completion for the Davis Cemetery District Change of Organization.
4. The effective date of the approval of this Change of Organization is five (5) days after the date the Certificate of Completion is recorded by the County Recorder.

PASSED AND ADOPTED by the Yolo Local Agency Formation Commission, State of California, this 28th day of March 2013, by the following vote.

AYES: Davies, Kristoff, Rexroad, Saylor, Woods

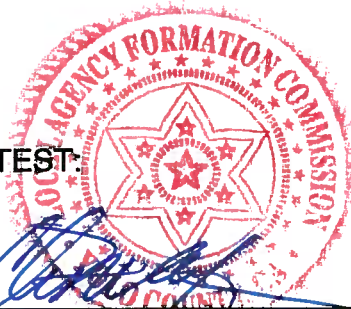
NOES: None

ABSENT: None



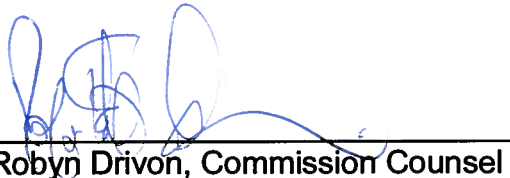
Olin Woods, Chair
Yolo Local Agency Formation Commission

ATTEST:

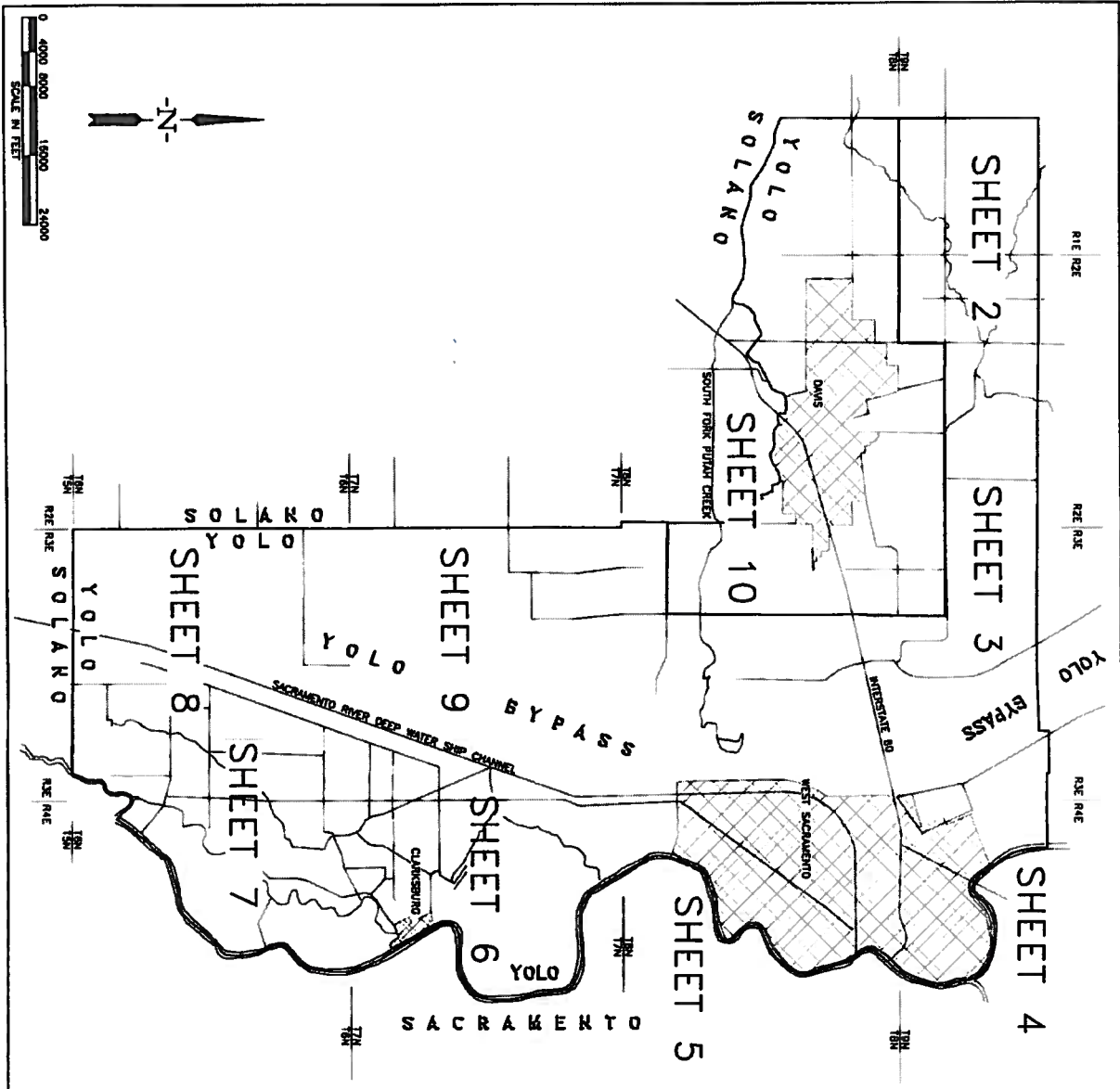


Christine Crawford, Executive Officer
Yolo Local Agency Formation Commission

Approved as to form:



Robyn Drivon, Commission Counsel



APPROVED BY LAFCD
 LAFCD PROCEEDING NO. 1113
 DATE 3/28/2013

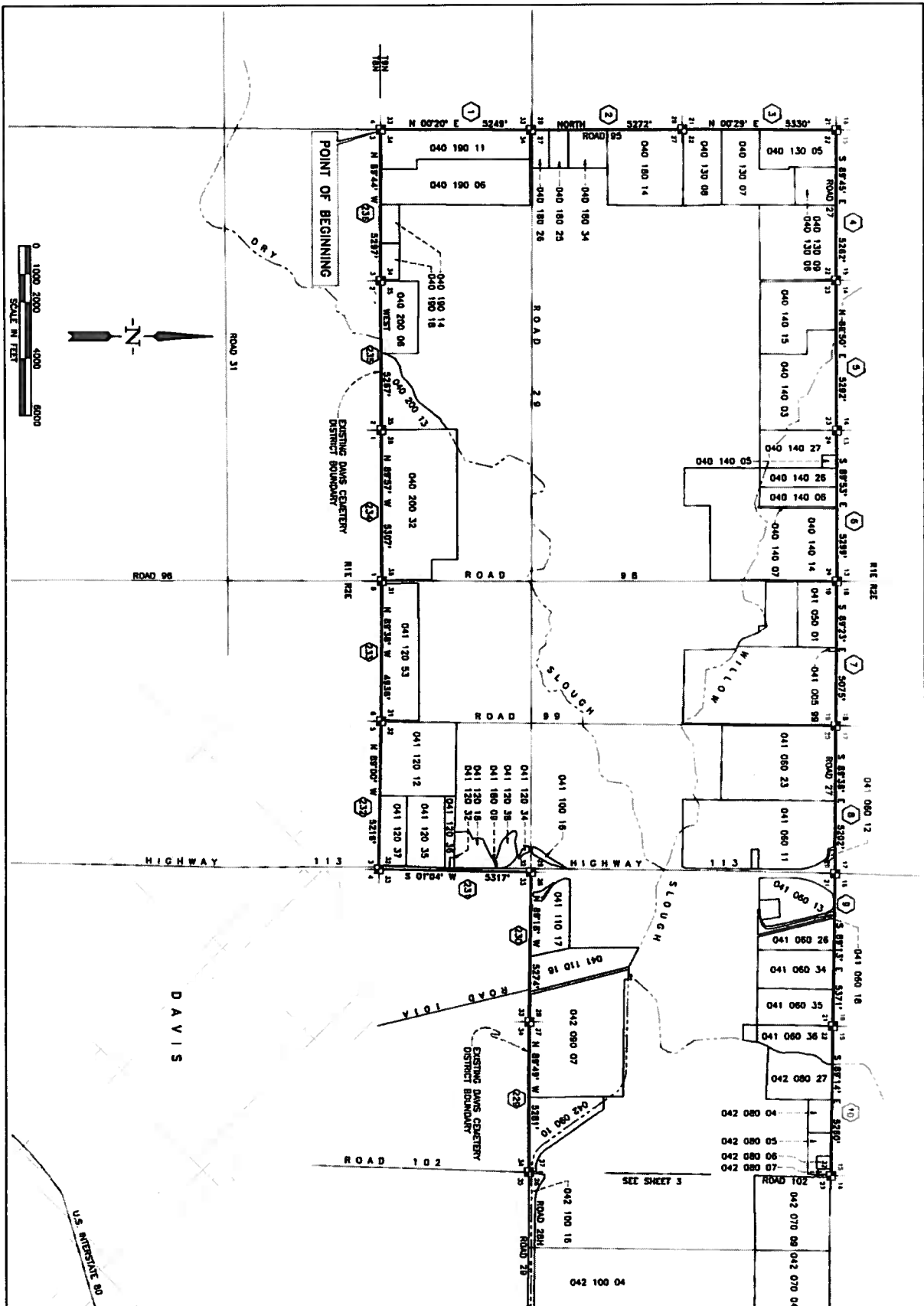
LEGEND
 ○ DIMENSION POINT
 ○ BOUNDARY COURSE NUMBER
 ○ EXISTING DISTRICT BOUNDARY
 ○ ASSESSOR'S PARCEL NUMBER

SURVEYOR'S STATEMENT
 THIS MAP WAS PREPARED FOR THE SOLE PURPOSE OF DEFINING ANNEXATION BOUNDARIES. IT WAS COMPILED FROM A VARIETY OF RECORD INFORMATION SOURCES OF VARYING ACCURACIES, AND DOES NOT PURPORT TO CORRECTLY REPRESENT LAND TITLE OR OWNERSHIP LINES. DIMENSIONS GIVEN ARE APPROXIMATE ONLY.
 JAMES H. FRAME 1111 LS 5435

FRAME SURVEYING & MAPPING
 809 A STREET DAVIS, CA 95616
 530.766.6584 (v&f) jhframe@dsn.org

NOTICE OF INTENTION TO ANNEX
 DAVIS CEMETERY DISTRICT
 2013 ANNEXATION

MARCH, 2013 SCALE: 1"=8000'
SHEET 1 OF 15

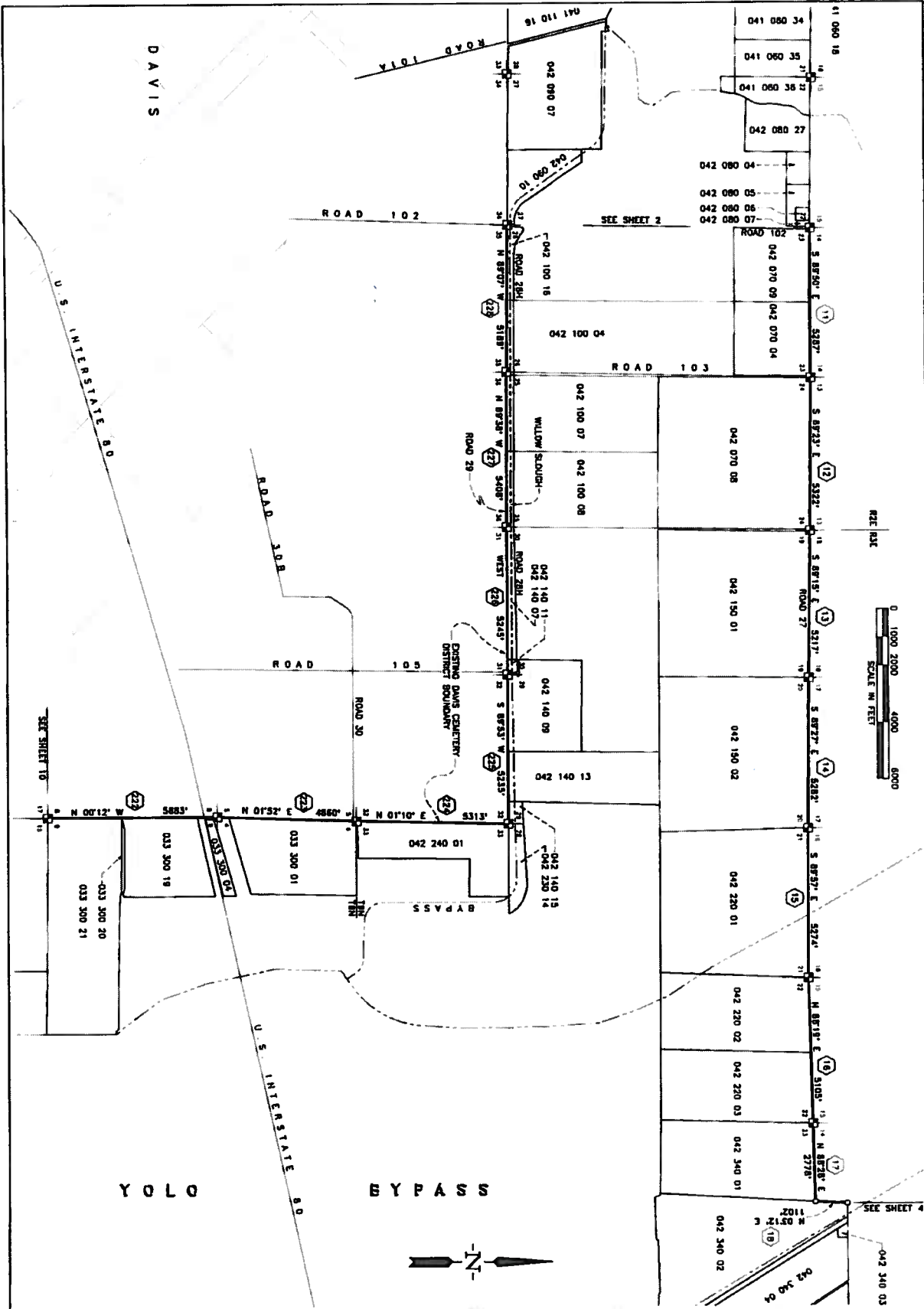


1261-002

FSM FRAME SURVEYING & MAPPING
 809 A STREET DAVIS, CA 95610
 920.756.8584 (v&t) jhframe@dca.org

NOTICE OF INTENTION TO ANNEX
 DAVIS CEMETERY DISTRICT
 2013 ANNEXATION

MARCH, 2013 SCALE: 1"=2000'
SHEET 2 OF 15



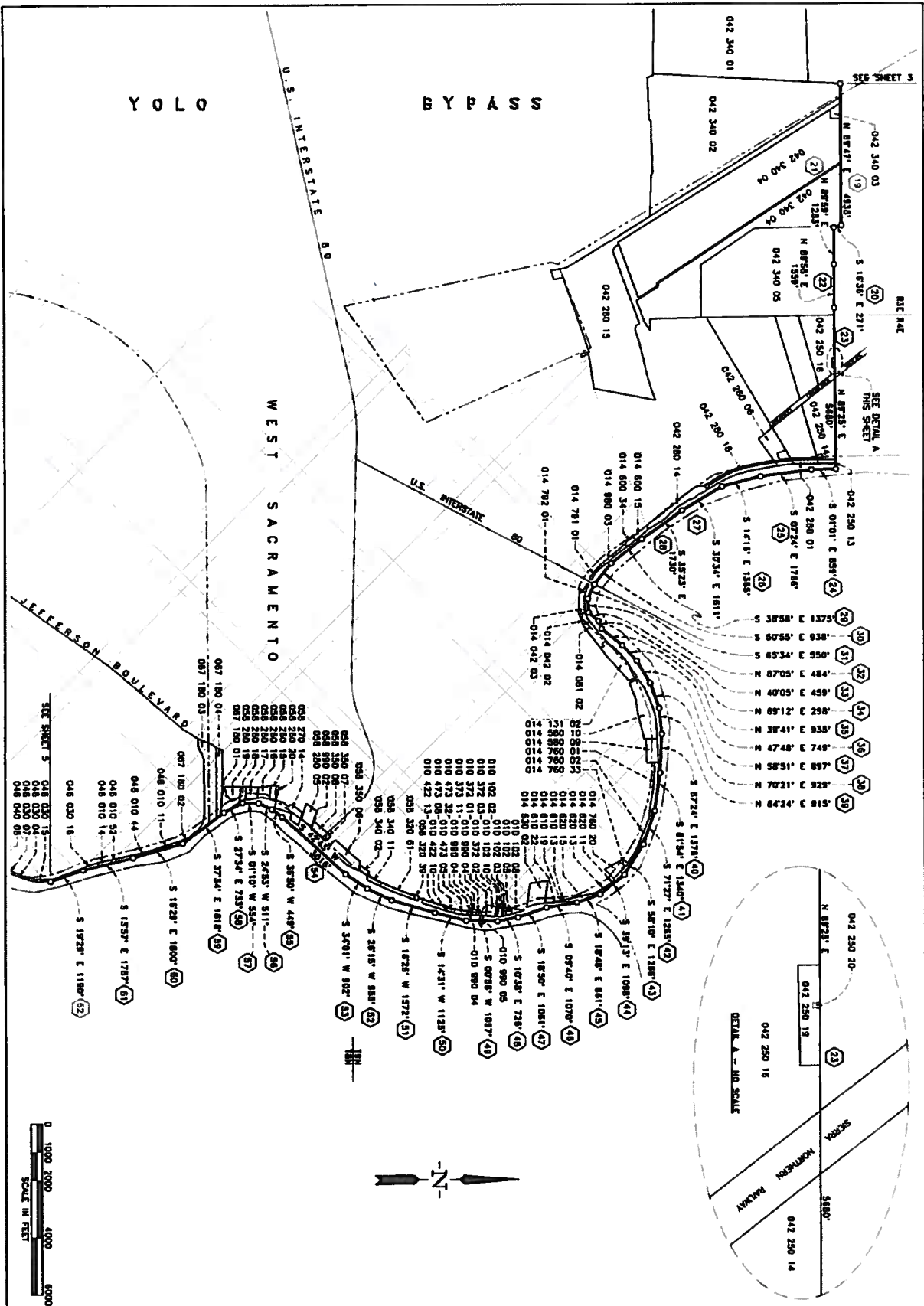
1261-002

IF
LSM **FRAME SURVEYING & MAPPING**
809 A STREET DAVIS, CA 95616
530.758.8584 (vtd) ifframe@dsn.org

NOTICE OF INTENTION TO ANNEX
DAVIS CEMETERY DISTRICT
2013 ANNEXATION

MARCH, 2013 SCALE: 1"=2000'

SHEET 3 OF 15



1261-002

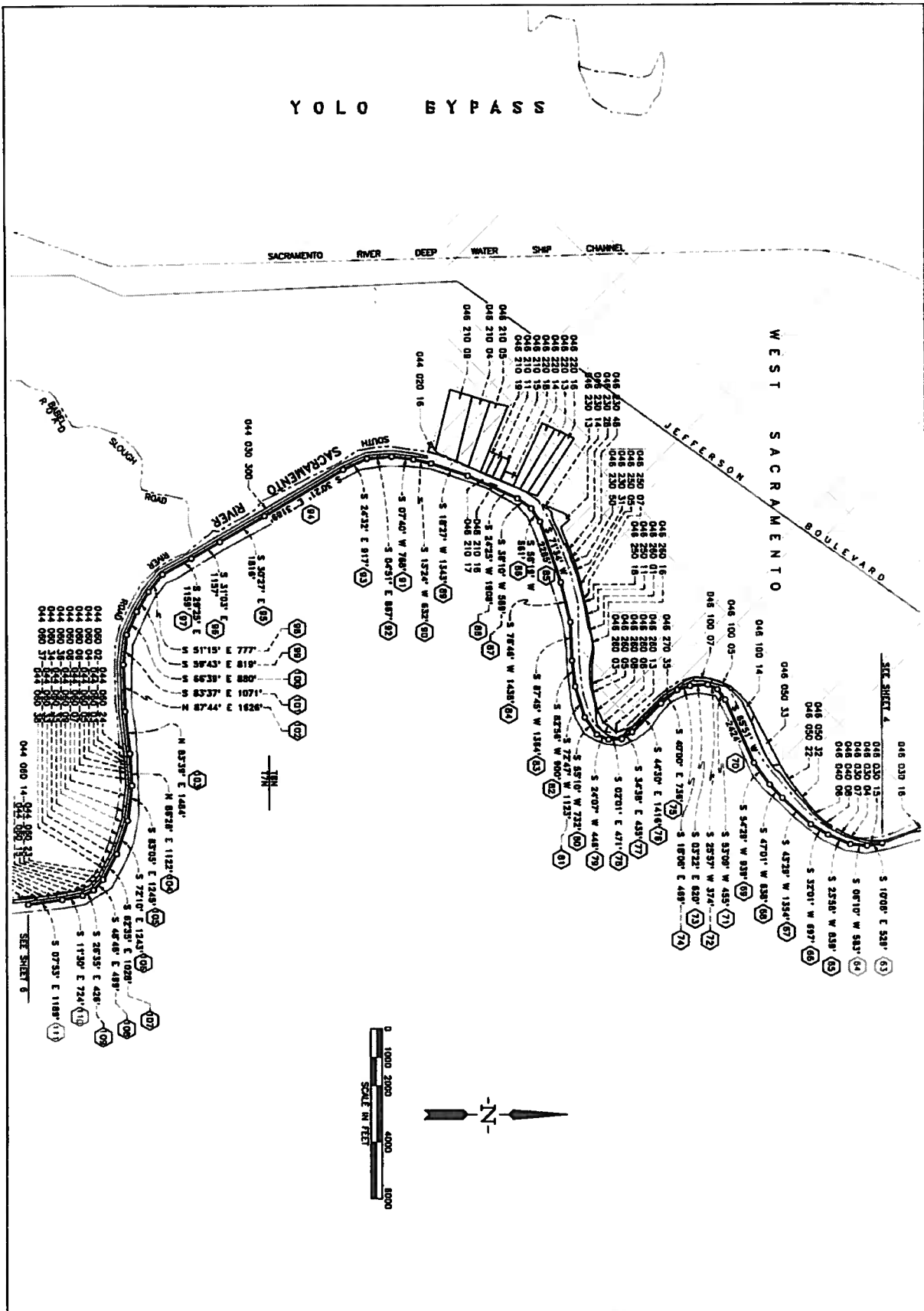
FRAME SURVEYING & MAPPING
 909 A STREET DAVIS, CA 95610
 530.758.8584 (vax) jframe@fsm.sj

NOTICE OF INTENTION TO ANNEX
 DAVIS CEMETERY DISTRICT
 2018 ANNEXATION

MARCH, 2013 SCALE: 1"=2000'

SHEET 4 OF 15

YOLO BYPASS

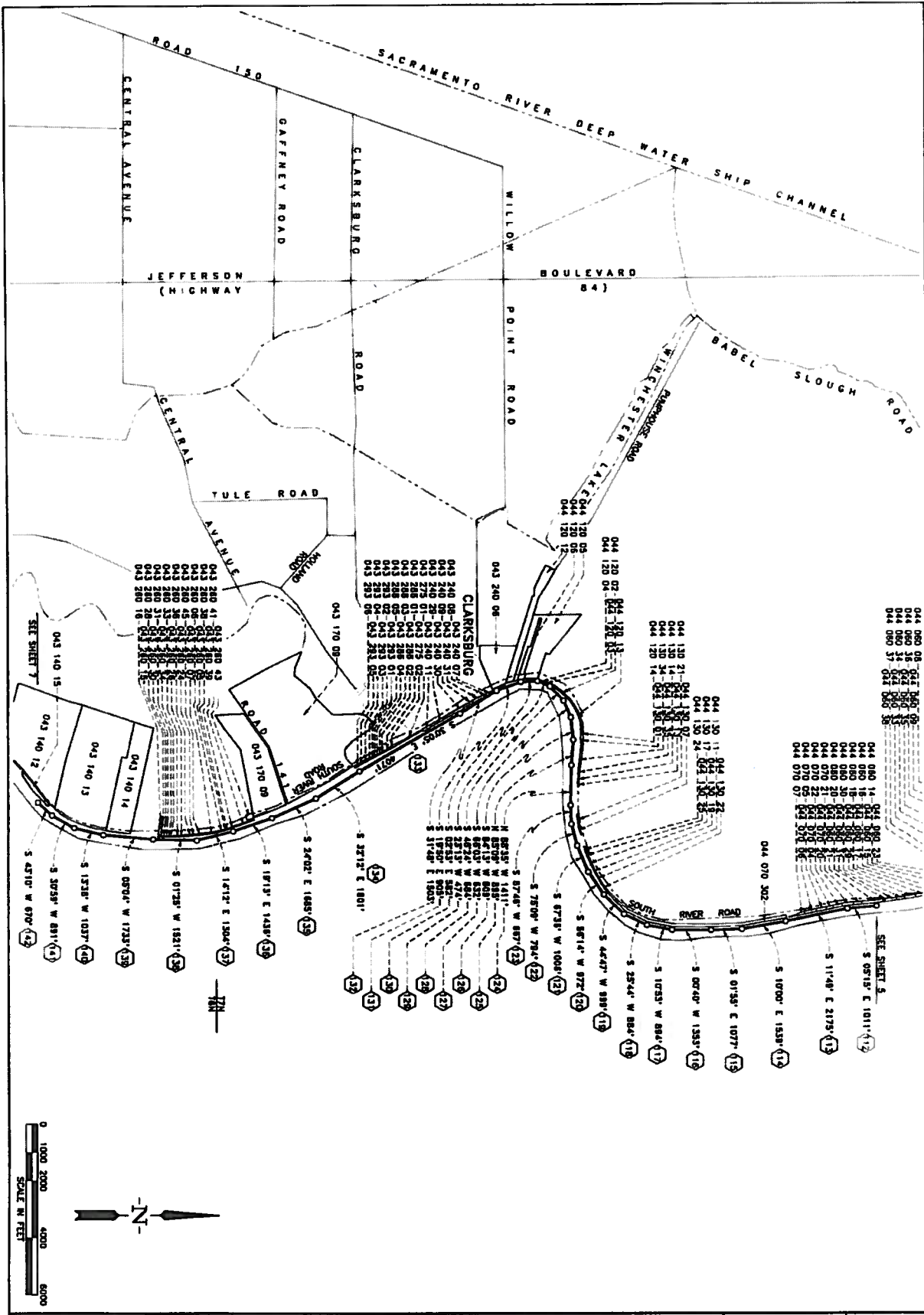


IF
STM
FRAME SURVEYING & MAPPING
600 A STREET DAVIS, CA 95616
920.758.8584 (v&t) jhframe@dsn.org

NOTICE OF INTENTION TO ANNEX
DAVIS CEMETERY DISTRICT
203 ANNEXATION

MARCH, 2013 SCALE: 1"=2000'
SHEET 5 OF 15

1261-002

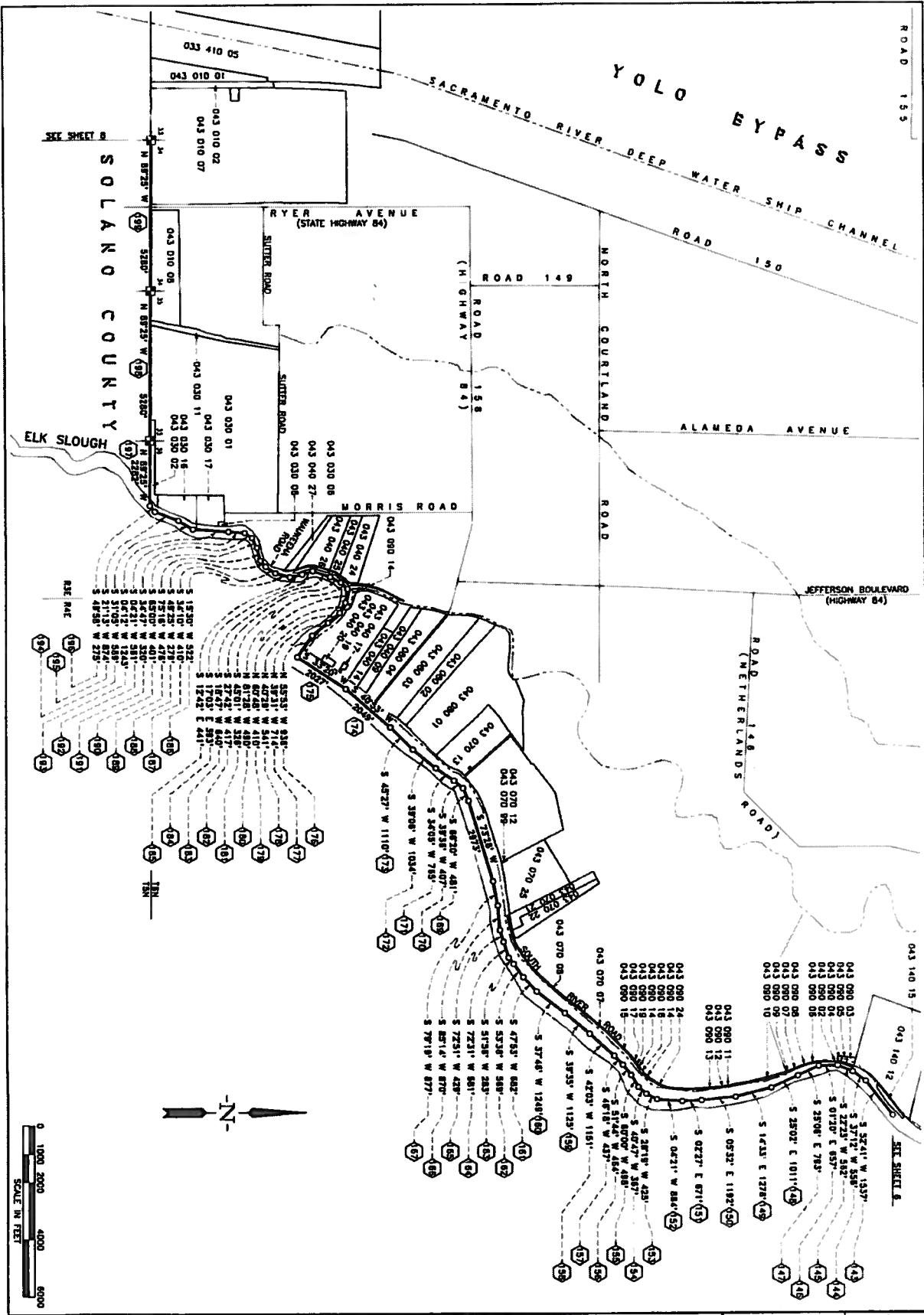


1261-002

IF
STM
FRAME SURVEYING & MAPPING
809 A STREET DAVIS, CA 95616
530.790.8384 (v&t) jframe@fsm.org

NOTICE OF INTENTION TO ANNEX
DAVIS CEMETERY DISTRICT
2013 ANNEXATION

MARCH, 2013 SCALE: 1"=2000'
SHEET 6 OF 15

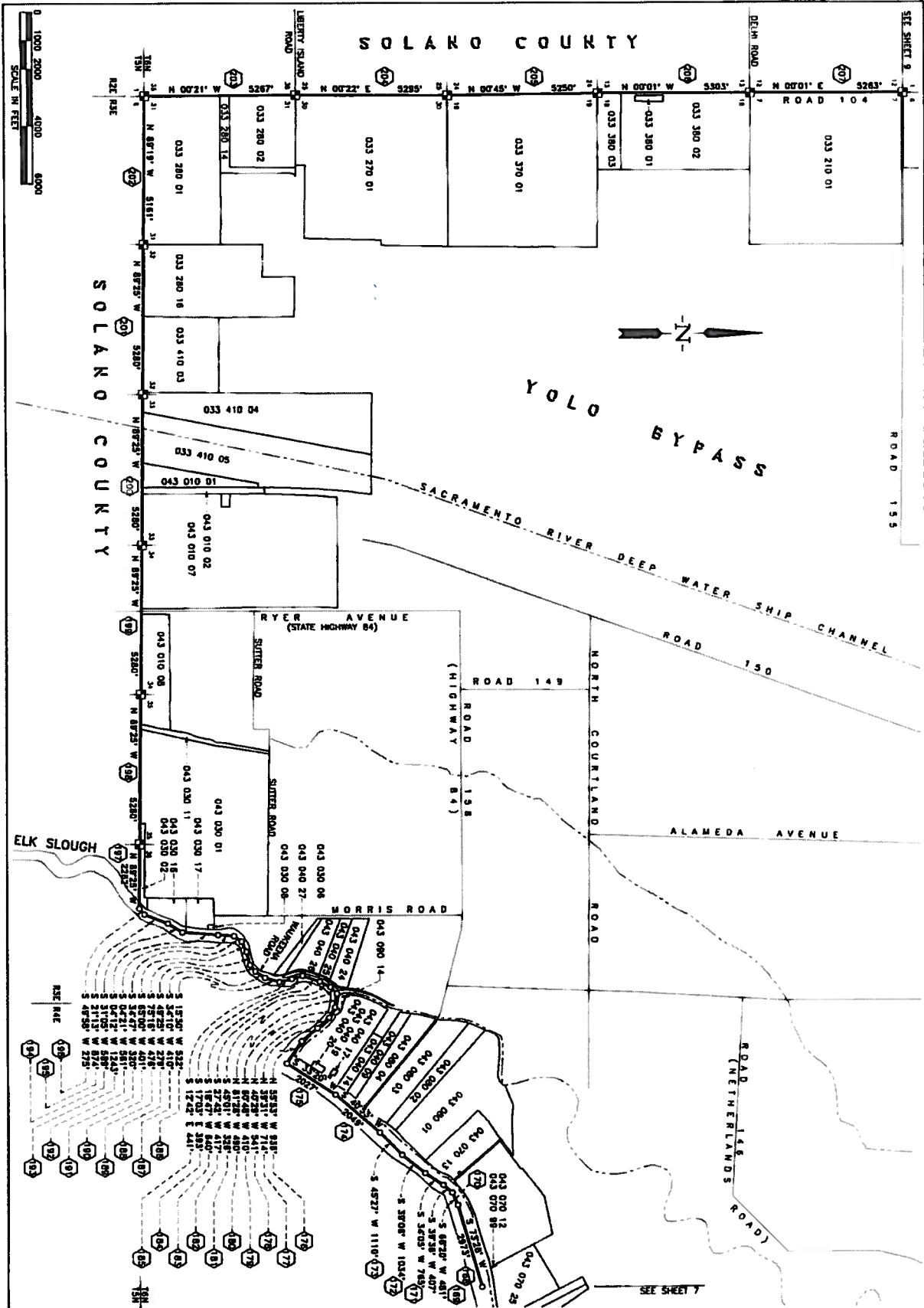


1261-002


FRAME SURVEYING & MAPPING
 600 A STREET DAVIS, CA 95616
 530.738.8544 (var) jframe@frame.com

NOTICE OF INTENTION TO ANNEX
 DAVIS CEMETERY DISTRICT
 203 ANNEXATION

MARCH, 2013 SCALE: 1"=2000'
SHEET 7 OF 15

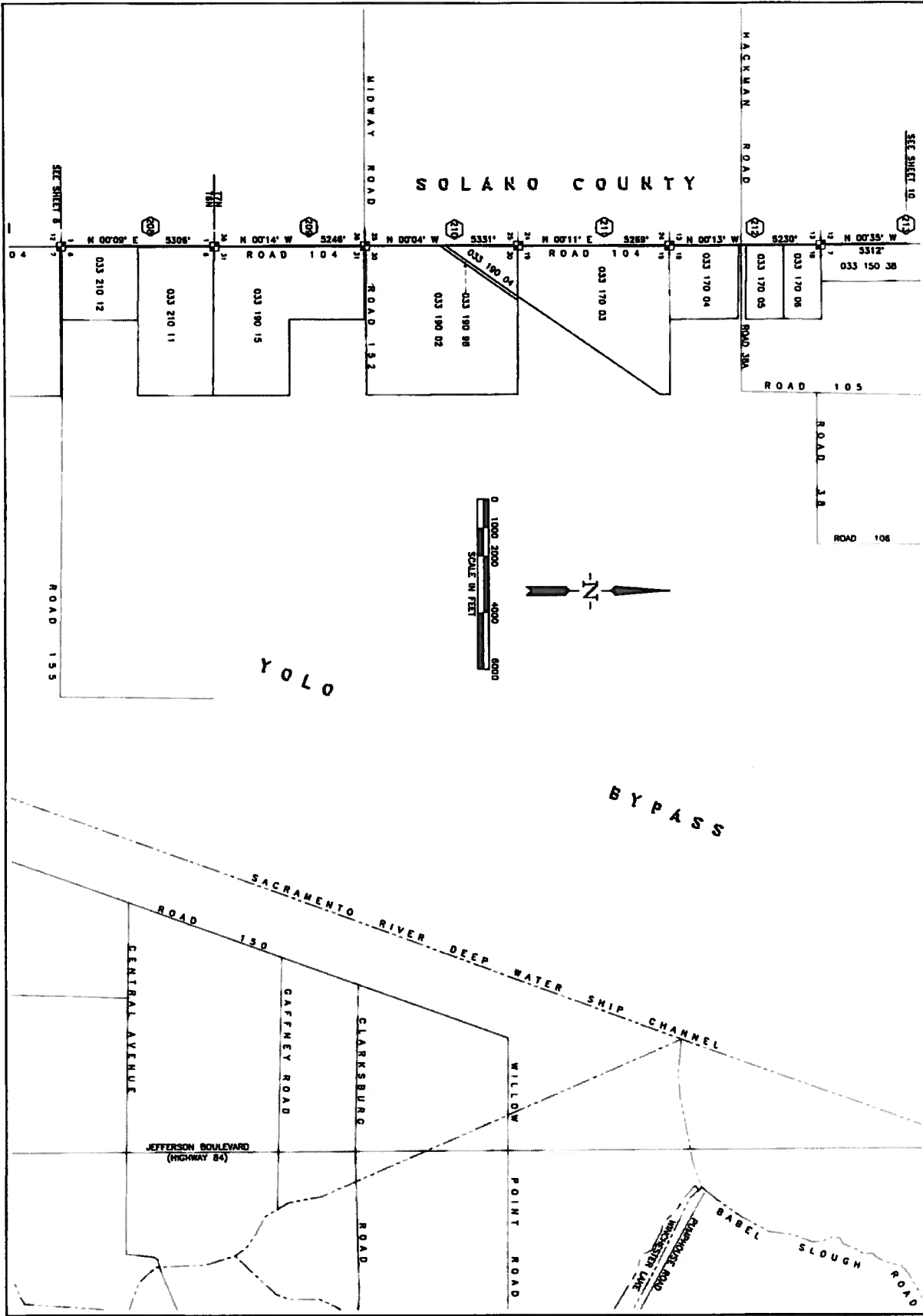


1261-002


FRAME SURVEYING & MAPPING
 600 W STREET, DAYTON, OH 45416
 530.760.8554 (ext) jframe@dsn.org

NOTICE OF INTENTION TO ANNEX
DAVIS CEMETERY DISTRICT
2013 ANNEXATION

MARCH, 2013 SCALE: 1"=2000'
SHEET 8 OF 15



SEE SHEET 10

N 00°09' E 5306' 033 210 12
 N 00°14' W 5246' 033 210 11
 N 00°04' W 5351' 033 190 15
 N 00°11' E 5268' 033 190 02
 N 00°13' W 5312' 033 170 03
 N 00°35' W 5312' 033 170 04
 N 00°35' W 5312' 033 170 05
 N 00°35' W 5312' 033 170 06
 N 00°35' W 5312' 033 150 38

SOLANO COUNTY

YOLO

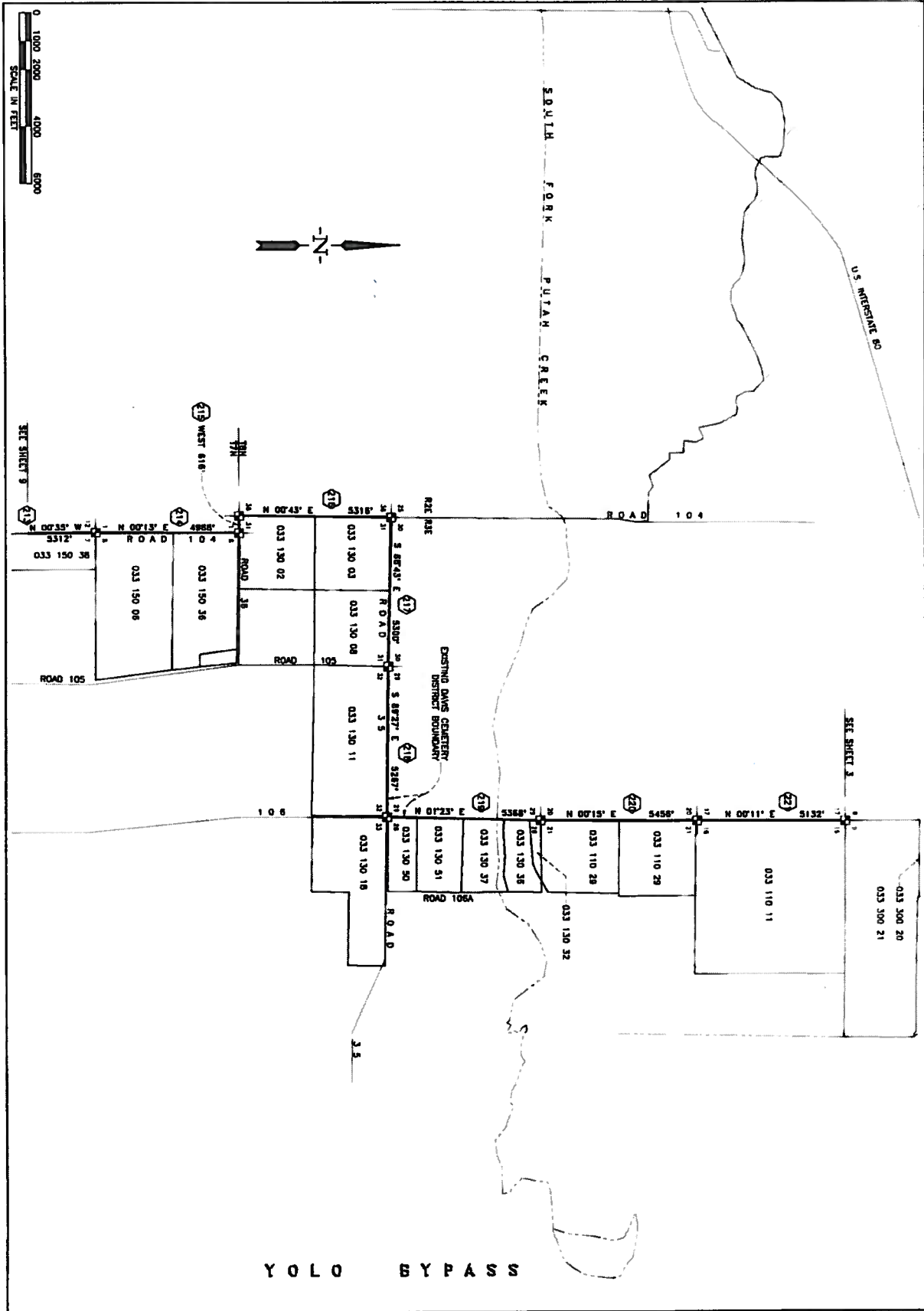
BYPASS

IF
LSM
FRAME SURVEYING & MAPPING
 600 A STREET DAVIS, CA 95610
 530.768.8364 (v&t) jframe@dsn.org

NOTICE OF INTENTION TO ANNEX
DAVIS CEMETERY DISTRICT
2013 ANNEXATION

MARCH, 2013 SCALE: 1"=2000'
SHEET 9 OF 15

1261-002



1261-002

IF
LSM
FRAME SURVEYING & MAPPING
 889 A STREET DAVIS, CA 95616
 930.758.8584 (v&t) jhframe@dcn.org

NOTICE OF INTENTION TO ANNEX
DAVIS CEMETERY DISTRICT
2013 ANNEXATION

MARCH, 2013 SCALE: 1"=2000'
SHEET 10 OF 15

DAVIS CEMETERY DISTRICT 2013 ANNEXATION

DESCRIPTION
 ALL THAT CERTAIN REAL PROPERTY SITUATED IN THE STATE OF CALIFORNIA, COUNTY OF YOLO, DESCRIBED AS FOLLOWS:

- 1 BEGINNING AT THE CORNER COMMON TO SECTIONS 3 AND 4, TOWNSHIP 8 NORTH, RANGE 1 EAST, OF YOLO COUNTY, AND SECTION 25 AND 26, TOWNSHIP 9 NORTH, RANGE 1 EAST, OF YOLO COUNTY, AND THE CORNER COMMON TO THE NORTHWEST CORNER OF THE DAVIS CEMETERY DISTRICT;
- 2 THENCE ALONG THE LINE BETWEEN SECTIONS 27 AND 28 NORTH 00° 20' 34" TOWNSHIP 9 NORTH, RANGE 1 EAST;
- 3 THENCE ALONG THE LINE BETWEEN SECTIONS 21 AND 22 NORTH 00° 29' EAST 2320 FEET TO THE CORNER COMMON TO SECTIONS 15, 16, 21 AND 22, TOWNSHIP 9 NORTH, RANGE 1 EAST;
- 4 THENCE ALONG THE LINE BETWEEN SECTIONS 15 AND 22 SOUTH 89° 45' EAST 5822 FEET TO THE CORNER COMMON TO SECTIONS 14, 15, 22 AND 23, TOWNSHIP 9 NORTH, RANGE 1 EAST;
- 5 THENCE ALONG THE LINE BETWEEN SECTIONS 14 AND 23 NORTH 89° 50' EAST 5292 FEET TO THE CORNER COMMON TO SECTIONS 13, 14, 23 AND 24, TOWNSHIP 9 NORTH, RANGE 1 EAST;
- 6 THENCE ALONG THE LINE BETWEEN SECTIONS 13 AND 24 SOUTH 89° 53' EAST 5289 FEET TO THE CORNER COMMON TO SECTIONS 13 AND 24, TOWNSHIP 9 NORTH, RANGE 1 EAST, AND SECTIONS 18 AND 19, TOWNSHIP 9 NORTH, RANGE 2 EAST;
- 7 THENCE ALONG THE LINE BETWEEN SECTIONS 18 AND 19 SOUTH 89° 23' EAST 5079 FEET TO THE CORNER COMMON TO SECTIONS 17, 18, 19 AND 20, TOWNSHIP 9 NORTH, RANGE 2 EAST;
- 8 THENCE ALONG THE LINE BETWEEN SECTIONS 17 AND 20 SOUTH 89° 30' EAST 5820 FEET TO THE CORNER COMMON TO SECTIONS 16, 17, 20 AND 21, TOWNSHIP 9 NORTH, RANGE 2 EAST;
- 9 THENCE ALONG THE LINE BETWEEN SECTIONS 16 AND 21 SOUTH 89° 13' EAST 5271 FEET TO THE CORNER COMMON TO SECTIONS 15, 16, 21 AND 22, TOWNSHIP 9 NORTH, RANGE 2 EAST;
- 10 THENCE ALONG THE LINE BETWEEN SECTIONS 15 AND 22 SOUTH 89° 14' EAST 5280 FEET TO THE CORNER COMMON TO SECTIONS 14, 15, 22 AND 23, TOWNSHIP 9 NORTH, RANGE 2 EAST;
- 11 THENCE ALONG THE LINE BETWEEN SECTIONS 14 AND 23 SOUTH 89° 50' EAST 5287 FEET TO THE CORNER COMMON TO SECTIONS 13, 14, 23 AND 24, TOWNSHIP 9 NORTH, RANGE 2 EAST;
- 12 THENCE ALONG THE LINE BETWEEN SECTIONS 13 AND 24 SOUTH 89° 23' EAST 5272 FEET TO THE CORNER COMMON TO SECTIONS 13 AND 18, TOWNSHIP 9 NORTH, RANGE 3 EAST;
- 13 THENCE ALONG THE LINE BETWEEN SECTIONS 18 AND 19 SOUTH 89° 15' EAST 5217 FEET TO THE CORNER COMMON TO SECTIONS 17, 18, 19 AND 20, TOWNSHIP 9 NORTH, RANGE 3 EAST;
- 14 THENCE ALONG THE LINE BETWEEN SECTIONS 17 AND 20 SOUTH 89° 27' EAST 5282 FEET TO THE CORNER COMMON TO SECTIONS 16, 17, 20 AND 21, TOWNSHIP 9 NORTH, RANGE 3 EAST;
- 15 THENCE ALONG THE LINE BETWEEN SECTIONS 16 AND 21 SOUTH 89° 57' EAST 5274 FEET TO THE CORNER COMMON TO SECTIONS 15, 16, 21 AND 22, TOWNSHIP 9 NORTH, RANGE 3 EAST;
- 16 THENCE ALONG THE LINE BETWEEN SECTIONS 15 AND 22 NORTH 89° 19' EAST 5103 FEET TO THE CORNER COMMON TO SECTIONS 14, 15, 22 AND 23, TOWNSHIP 9 NORTH, RANGE 3 EAST;

- 17 THENCE ALONG THE LINE BETWEEN SECTIONS 14 AND 23 NORTH 89° 28' EAST 2778 FEET;
- 18 THENCE ALONG THE EAST LINE OF THE WEST 1/2 OF SECTION 14 NORTH 03° 12' EAST 1102 FEET TO THE SOUTHWEST CORNER OF SWAMP LAND SURVEY NO. 497;
- 19 THENCE ALONG THE SOUTH LINE OF SWAMP LAND SURVEY NO. 497 NORTH 47° EAST 4828 FEET TO THE SOUTHEAST CORNER THEREOF AND THE WESTERN LINE OF SWAMP LAND SURVEY NO. 707;
- 20 THENCE ALONG THE SAID WESTERN LINE SOUTH 16° 38' EAST 271 FEET TO THE SOUTHWESTERN CORNER OF SWAMP LAND SURVEY NO. 707;
- 21 THENCE ALONG THE SOUTH LINE OF SWAMP LAND SURVEY NO. 707 NORTH 89° 59' EAST 1263 FEET TO THE SOUTHWEST CORNER THEREOF AND THE SOUTHWEST CORNER OF C.M. COCHRAN & COMPANY, INC. FILLED IN BOOK 2 OF MAPS AT PAGE 28, YOLO COUNTY RECORDS;
- 22 THENCE ALONG THE SOUTH LINE OF SAID COCHRAN, INC. NORTH 89° 59' EAST 1589 FEET TO THE SOUTHWEST CORNER THEREOF AND THE SOUTHWEST CORNER OF SWAMP LAND SURVEY NO. 485;
- 23 THENCE ALONG THE SOUTH LINE OF SWAMP LAND SURVEY NO. 485 AND 115 EASTERN PROJECTION NORTH 89° 25' EAST 5680 FEET TO THE SACRAMENTO RIVER AND THE BOUNDARY BETWEEN SACRAMENTO AND YOLO COUNTIES;
- 24 THENCE ALONG THE SACRAMENTO RIVER AND THE BOUNDARY BETWEEN SACRAMENTO AND YOLO COUNTIES, SOUTH 01° 01' EAST 859 FEET;
- 25 THENCE CONTINUING ALONG THE SACRAMENTO RIVER AND THE BOUNDARY BETWEEN SACRAMENTO AND YOLO COUNTIES, SOUTH 07° 24' EAST 1788 FEET;
- 26 THENCE CONTINUING ALONG THE SACRAMENTO RIVER AND THE BOUNDARY BETWEEN SACRAMENTO AND YOLO COUNTIES, SOUTH 14° 16' EAST 1285 FEET;
- 27 THENCE CONTINUING ALONG THE SACRAMENTO RIVER AND THE BOUNDARY BETWEEN SACRAMENTO AND YOLO COUNTIES, SOUTH 30° 34' EAST 1811 FEET;
- 28 THENCE CONTINUING ALONG THE SACRAMENTO RIVER AND THE BOUNDARY BETWEEN SACRAMENTO AND YOLO COUNTIES, SOUTH 35° 23' EAST 1720 FEET;
- 29 THENCE CONTINUING ALONG THE SACRAMENTO RIVER AND THE BOUNDARY BETWEEN SACRAMENTO AND YOLO COUNTIES, SOUTH 38° 58' EAST 1275 FEET;
- 30 THENCE CONTINUING ALONG THE SACRAMENTO RIVER AND THE BOUNDARY BETWEEN SACRAMENTO AND YOLO COUNTIES, SOUTH 50° 55' EAST 928 FEET;
- 31 THENCE CONTINUING ALONG THE SACRAMENTO RIVER AND THE BOUNDARY BETWEEN SACRAMENTO AND YOLO COUNTIES, SOUTH 65° 24' EAST 550 FEET;
- 32 THENCE CONTINUING ALONG THE SACRAMENTO RIVER AND THE BOUNDARY BETWEEN SACRAMENTO AND YOLO COUNTIES, NORTH 87° 05' EAST 484 FEET;
- 33 THENCE CONTINUING ALONG THE SACRAMENTO RIVER AND THE BOUNDARY BETWEEN SACRAMENTO AND YOLO COUNTIES, NORTH 40° 05' EAST 459 FEET;
- 34 THENCE CONTINUING ALONG THE SACRAMENTO RIVER AND THE BOUNDARY BETWEEN SACRAMENTO AND YOLO COUNTIES, NORTH 69° 12' EAST 296 FEET;
- 35 THENCE CONTINUING ALONG THE SACRAMENTO RIVER AND THE BOUNDARY BETWEEN SACRAMENTO AND YOLO COUNTIES, NORTH 39° 41' EAST 935 FEET;

- 36 THENCE CONTINUING ALONG THE SACRAMENTO RIVER AND THE BOUNDARY BETWEEN SACRAMENTO AND YOLO COUNTIES, NORTH 47° 48' EAST 749 FEET;
- 37 THENCE CONTINUING ALONG THE SACRAMENTO RIVER AND THE BOUNDARY BETWEEN SACRAMENTO AND YOLO COUNTIES, NORTH 58° 51' EAST 897 FEET;
- 38 THENCE CONTINUING ALONG THE SACRAMENTO RIVER AND THE BOUNDARY BETWEEN SACRAMENTO AND YOLO COUNTIES, NORTH 70° 21' EAST 928 FEET;
- 39 THENCE CONTINUING ALONG THE SACRAMENTO RIVER AND THE BOUNDARY BETWEEN SACRAMENTO AND YOLO COUNTIES, NORTH 84° 24' EAST 915 FEET;
- 40 THENCE CONTINUING ALONG THE SACRAMENTO RIVER AND THE BOUNDARY BETWEEN SACRAMENTO AND YOLO COUNTIES, SOUTH 87° 24' EAST 1376 FEET;
- 41 THENCE CONTINUING ALONG THE SACRAMENTO RIVER AND THE BOUNDARY BETWEEN SACRAMENTO AND YOLO COUNTIES, SOUTH 81° 54' EAST 1340 FEET;
- 42 THENCE CONTINUING ALONG THE SACRAMENTO RIVER AND THE BOUNDARY BETWEEN SACRAMENTO AND YOLO COUNTIES, SOUTH 71° 27' EAST 1885 FEET;
- 43 THENCE CONTINUING ALONG THE SACRAMENTO RIVER AND THE BOUNDARY BETWEEN SACRAMENTO AND YOLO COUNTIES, SOUTH 58° 10' EAST 1285 FEET;
- 44 THENCE CONTINUING ALONG THE SACRAMENTO RIVER AND THE BOUNDARY BETWEEN SACRAMENTO AND YOLO COUNTIES, SOUTH 38° 58' EAST 1098 FEET;
- 45 THENCE CONTINUING ALONG THE SACRAMENTO RIVER AND THE BOUNDARY BETWEEN SACRAMENTO AND YOLO COUNTIES, SOUTH 18° 48' EAST 961 FEET;
- 46 THENCE CONTINUING ALONG THE SACRAMENTO RIVER AND THE BOUNDARY BETWEEN SACRAMENTO AND YOLO COUNTIES, SOUTH 09° 40' EAST 1070 FEET;
- 47 THENCE CONTINUING ALONG THE SACRAMENTO RIVER AND THE BOUNDARY BETWEEN SACRAMENTO AND YOLO COUNTIES, SOUTH 18° 50' EAST 1091 FEET;
- 48 THENCE CONTINUING ALONG THE SACRAMENTO RIVER AND THE BOUNDARY BETWEEN SACRAMENTO AND YOLO COUNTIES, SOUTH 10° 38' EAST 726 FEET;
- 49 THENCE CONTINUING ALONG THE SACRAMENTO RIVER AND THE BOUNDARY BETWEEN SACRAMENTO AND YOLO COUNTIES, SOUTH 00° 58' WEST 1097 FEET;
- 50 THENCE CONTINUING ALONG THE SACRAMENTO RIVER AND THE BOUNDARY BETWEEN SACRAMENTO AND YOLO COUNTIES, SOUTH 14° 31' WEST 1125 FEET;
- 51 THENCE CONTINUING ALONG THE SACRAMENTO RIVER AND THE BOUNDARY BETWEEN SACRAMENTO AND YOLO COUNTIES, SOUTH 18° 26' WEST 1872 FEET;
- 52 THENCE CONTINUING ALONG THE SACRAMENTO RIVER AND THE BOUNDARY BETWEEN SACRAMENTO AND YOLO COUNTIES, SOUTH 28° 19' WEST 955 FEET;
- 53 THENCE CONTINUING ALONG THE SACRAMENTO RIVER AND THE BOUNDARY BETWEEN SACRAMENTO AND YOLO COUNTIES, SOUTH 34° 01' WEST 902 FEET;
- 54 THENCE CONTINUING ALONG THE SACRAMENTO RIVER AND THE BOUNDARY BETWEEN SACRAMENTO AND YOLO COUNTIES, SOUTH 42° 43' WEST 2016 FEET;

1261-002

FRAMM SURVEYING & MAPPING
 809 A STREET DAYTON, CA 94610
 930.758.8584 (cell) framm@scn.org

NOTICE OF INTENTION TO ANNEX
 DAVIS CEMETERY DISTRICT
 2013 ANNEXATION

MARCH 2013 SCALE:
 SHEET 11 OF 15

- 65) THENCE CONTINUING ALONG THE SACRAMENTO RIVER AND THE BOUNDARY BETWEEN SACRAMENTO AND YOLO COUNTIES, SOUTH 30° 50' WEST 449 FEET;
- 66) THENCE CONTINUING ALONG THE SACRAMENTO RIVER AND THE BOUNDARY BETWEEN SACRAMENTO AND YOLO COUNTIES, SOUTH 24° 53' WEST 511 FEET;
- 67) THENCE CONTINUING ALONG THE SACRAMENTO RIVER AND THE BOUNDARY BETWEEN SACRAMENTO AND YOLO COUNTIES, SOUTH 01° 10' WEST 564 FEET;
- 68) THENCE CONTINUING ALONG THE SACRAMENTO RIVER AND THE BOUNDARY BETWEEN SACRAMENTO AND YOLO COUNTIES, SOUTH 27° 34' EAST 733 FEET;
- 69) THENCE CONTINUING ALONG THE SACRAMENTO RIVER AND THE BOUNDARY BETWEEN SACRAMENTO AND YOLO COUNTIES, SOUTH 37° 34' EAST 1818 FEET;
- 70) THENCE CONTINUING ALONG THE SACRAMENTO RIVER AND THE BOUNDARY BETWEEN SACRAMENTO AND YOLO COUNTIES, SOUTH 16° 28' EAST 1800 FEET;
- 71) THENCE CONTINUING ALONG THE SACRAMENTO RIVER AND THE BOUNDARY BETWEEN SACRAMENTO AND YOLO COUNTIES, SOUTH 13° 57' EAST 1787 FEET;
- 72) THENCE CONTINUING ALONG THE SACRAMENTO RIVER AND THE BOUNDARY BETWEEN SACRAMENTO AND YOLO COUNTIES, SOUTH 10° 08' EAST 539 FEET;
- 73) THENCE CONTINUING ALONG THE SACRAMENTO RIVER AND THE BOUNDARY BETWEEN SACRAMENTO AND YOLO COUNTIES, SOUTH 08° 10' WEST 583 FEET;
- 74) THENCE CONTINUING ALONG THE SACRAMENTO RIVER AND THE BOUNDARY BETWEEN SACRAMENTO AND YOLO COUNTIES, SOUTH 27° 58' WEST 839 FEET;
- 75) THENCE CONTINUING ALONG THE SACRAMENTO RIVER AND THE BOUNDARY BETWEEN SACRAMENTO AND YOLO COUNTIES, SOUTH 27° 01' WEST 897 FEET;
- 76) THENCE CONTINUING ALONG THE SACRAMENTO RIVER AND THE BOUNDARY BETWEEN SACRAMENTO AND YOLO COUNTIES, SOUTH 43° 28' WEST 1354 FEET;
- 77) THENCE CONTINUING ALONG THE SACRAMENTO RIVER AND THE BOUNDARY BETWEEN SACRAMENTO AND YOLO COUNTIES, SOUTH 47° 01' WEST 638 FEET;
- 78) THENCE CONTINUING ALONG THE SACRAMENTO RIVER AND THE BOUNDARY BETWEEN SACRAMENTO AND YOLO COUNTIES, SOUTH 54° 28' WEST 839 FEET;
- 79) THENCE CONTINUING ALONG THE SACRAMENTO RIVER AND THE BOUNDARY BETWEEN SACRAMENTO AND YOLO COUNTIES, SOUTH 65° 51' WEST 2454 FEET;
- 80) THENCE CONTINUING ALONG THE SACRAMENTO RIVER AND THE BOUNDARY BETWEEN SACRAMENTO AND YOLO COUNTIES, SOUTH 53° 08' WEST 455 FEET;
- 81) THENCE CONTINUING ALONG THE SACRAMENTO RIVER AND THE BOUNDARY BETWEEN SACRAMENTO AND YOLO COUNTIES, SOUTH 25° 57' WEST 574 FEET;
- 82) THENCE CONTINUING ALONG THE SACRAMENTO RIVER AND THE BOUNDARY BETWEEN SACRAMENTO AND YOLO COUNTIES, SOUTH 03° 22' EAST 620 FEET;
- 74) THENCE CONTINUING ALONG THE SACRAMENTO RIVER AND THE BOUNDARY BETWEEN SACRAMENTO AND YOLO COUNTIES, SOUTH 18° 08' EAST 469 FEET;
- 75) THENCE CONTINUING ALONG THE SACRAMENTO RIVER AND THE BOUNDARY BETWEEN SACRAMENTO AND YOLO COUNTIES, SOUTH 48° 00' EAST 738 FEET;
- 76) THENCE CONTINUING ALONG THE SACRAMENTO RIVER AND THE BOUNDARY BETWEEN SACRAMENTO AND YOLO COUNTIES, SOUTH 44° 30' EAST 1416 FEET;
- 77) THENCE CONTINUING ALONG THE SACRAMENTO RIVER AND THE BOUNDARY BETWEEN SACRAMENTO AND YOLO COUNTIES, SOUTH 34° 38' EAST 435 FEET;
- 78) THENCE CONTINUING ALONG THE SACRAMENTO RIVER AND THE BOUNDARY BETWEEN SACRAMENTO AND YOLO COUNTIES, SOUTH 02° 01' EAST 471 FEET;
- 79) THENCE CONTINUING ALONG THE SACRAMENTO RIVER AND THE BOUNDARY BETWEEN SACRAMENTO AND YOLO COUNTIES, SOUTH 24° 07' WEST 448 FEET;
- 80) THENCE CONTINUING ALONG THE SACRAMENTO RIVER AND THE BOUNDARY BETWEEN SACRAMENTO AND YOLO COUNTIES, SOUTH 55° 10' WEST 732 FEET;
- 81) THENCE CONTINUING ALONG THE SACRAMENTO RIVER AND THE BOUNDARY BETWEEN SACRAMENTO AND YOLO COUNTIES, SOUTH 72° 47' WEST 1123 FEET;
- 82) THENCE CONTINUING ALONG THE SACRAMENTO RIVER AND THE BOUNDARY BETWEEN SACRAMENTO AND YOLO COUNTIES, SOUTH 82° 58' WEST 800 FEET;
- 83) THENCE CONTINUING ALONG THE SACRAMENTO RIVER AND THE BOUNDARY BETWEEN SACRAMENTO AND YOLO COUNTIES, SOUTH 87° 49' WEST 1364 FEET;
- 84) THENCE CONTINUING ALONG THE SACRAMENTO RIVER AND THE BOUNDARY BETWEEN SACRAMENTO AND YOLO COUNTIES, SOUTH 78° 48' WEST 1438 FEET;
- 85) THENCE CONTINUING ALONG THE SACRAMENTO RIVER AND THE BOUNDARY BETWEEN SACRAMENTO AND YOLO COUNTIES, SOUTH 71° 34' WEST 2285 FEET;
- 86) THENCE CONTINUING ALONG THE SACRAMENTO RIVER AND THE BOUNDARY BETWEEN SACRAMENTO AND YOLO COUNTIES, SOUTH 56° 18' WEST 561 FEET;
- 87) THENCE CONTINUING ALONG THE SACRAMENTO RIVER AND THE BOUNDARY BETWEEN SACRAMENTO AND YOLO COUNTIES, SOUTH 38° 10' WEST 589 FEET;
- 88) THENCE CONTINUING ALONG THE SACRAMENTO RIVER AND THE BOUNDARY BETWEEN SACRAMENTO AND YOLO COUNTIES, SOUTH 24° 25' WEST 1808 FEET;
- 89) THENCE CONTINUING ALONG THE SACRAMENTO RIVER AND THE BOUNDARY BETWEEN SACRAMENTO AND YOLO COUNTIES, SOUTH 18° 27' WEST 1343 FEET;
- 90) THENCE CONTINUING ALONG THE SACRAMENTO RIVER AND THE BOUNDARY BETWEEN SACRAMENTO AND YOLO COUNTIES, SOUTH 13° 24' WEST 632 FEET;
- 91) THENCE CONTINUING ALONG THE SACRAMENTO RIVER AND THE BOUNDARY BETWEEN SACRAMENTO AND YOLO COUNTIES, SOUTH 07° 40' WEST 798 FEET;
- 92) THENCE CONTINUING ALONG THE SACRAMENTO RIVER AND THE BOUNDARY BETWEEN SACRAMENTO AND YOLO COUNTIES, SOUTH 04° 51' EAST 897 FEET;
- 93) THENCE CONTINUING ALONG THE SACRAMENTO RIVER AND THE BOUNDARY BETWEEN SACRAMENTO AND YOLO COUNTIES, SOUTH 24° 32' EAST 917 FEET;
- 94) THENCE CONTINUING ALONG THE SACRAMENTO RIVER AND THE BOUNDARY BETWEEN SACRAMENTO AND YOLO COUNTIES, SOUTH 30° 21' EAST 3189 FEET;
- 95) THENCE CONTINUING ALONG THE SACRAMENTO RIVER AND THE BOUNDARY BETWEEN SACRAMENTO AND YOLO COUNTIES, SOUTH 30° 27' EAST 1816 FEET;
- 96) THENCE CONTINUING ALONG THE SACRAMENTO RIVER AND THE BOUNDARY BETWEEN SACRAMENTO AND YOLO COUNTIES, SOUTH 31° 03' EAST 1197 FEET;
- 97) THENCE CONTINUING ALONG THE SACRAMENTO RIVER AND THE BOUNDARY BETWEEN SACRAMENTO AND YOLO COUNTIES, SOUTH 28° 25' EAST 1159 FEET;
- 98) THENCE CONTINUING ALONG THE SACRAMENTO RIVER AND THE BOUNDARY BETWEEN SACRAMENTO AND YOLO COUNTIES, SOUTH 51° 15' EAST 777 FEET;
- 99) THENCE CONTINUING ALONG THE SACRAMENTO RIVER AND THE BOUNDARY BETWEEN SACRAMENTO AND YOLO COUNTIES, SOUTH 58° 43' EAST 819 FEET;
- 100) THENCE CONTINUING ALONG THE SACRAMENTO RIVER AND THE BOUNDARY BETWEEN SACRAMENTO AND YOLO COUNTIES, SOUTH 68° 38' EAST 880 FEET;
- 101) THENCE CONTINUING ALONG THE SACRAMENTO RIVER AND THE BOUNDARY BETWEEN SACRAMENTO AND YOLO COUNTIES, SOUTH 83° 37' EAST 1071 FEET;
- 102) THENCE CONTINUING ALONG THE SACRAMENTO RIVER AND THE BOUNDARY BETWEEN SACRAMENTO AND YOLO COUNTIES, NORTH 87° 44' EAST 1828 FEET;
- 103) THENCE CONTINUING ALONG THE SACRAMENTO RIVER AND THE BOUNDARY BETWEEN SACRAMENTO AND YOLO COUNTIES, NORTH 83° 38' EAST 1484 FEET;
- 104) THENCE CONTINUING ALONG THE SACRAMENTO RIVER AND THE BOUNDARY BETWEEN SACRAMENTO AND YOLO COUNTIES, NORTH 88° 28' EAST 1122 FEET;
- 105) THENCE CONTINUING ALONG THE SACRAMENTO RIVER AND THE BOUNDARY BETWEEN SACRAMENTO AND YOLO COUNTIES, SOUTH 88° 05' EAST 1245 FEET;
- 106) THENCE CONTINUING ALONG THE SACRAMENTO RIVER AND THE BOUNDARY BETWEEN SACRAMENTO AND YOLO COUNTIES, SOUTH 72° 10' EAST 1243 FEET;
- 107) THENCE CONTINUING ALONG THE SACRAMENTO RIVER AND THE BOUNDARY BETWEEN SACRAMENTO AND YOLO COUNTIES, SOUTH 82° 38' EAST 1028 FEET;
- 108) THENCE CONTINUING ALONG THE SACRAMENTO RIVER AND THE BOUNDARY BETWEEN SACRAMENTO AND YOLO COUNTIES, SOUTH 48° 48' EAST 499 FEET;
- 109) THENCE CONTINUING ALONG THE SACRAMENTO RIVER AND THE BOUNDARY BETWEEN SACRAMENTO AND YOLO COUNTIES, SOUTH 28° 35' EAST 428 FEET;
- 110) THENCE CONTINUING ALONG THE SACRAMENTO RIVER AND THE BOUNDARY BETWEEN SACRAMENTO AND YOLO COUNTIES, SOUTH 11° 30' EAST 724 FEET;
- 11) THENCE CONTINUING ALONG THE SACRAMENTO RIVER AND THE BOUNDARY BETWEEN SACRAMENTO AND YOLO COUNTIES, SOUTH 07° 53' EAST 1189 FEET;

FRAME SURVEYING & MAPPING
 809 A STREET DAVIS, CA 95616
 530.758.8564 (v&t) frframe@dcn.org

**NOTICE OF INTENTION TO ANNEX
 DAVIS CEMETERY DISTRICT
 2013 ANNEXATION**

- 112) THENCE CONTINUING ALONG THE SACRAMENTO RIVER AND THE BOUNDARY BETWEEN SACRAMENTO AND YOLO COUNTIES, SOUTH 05° 15' EAST 1011 FEET;
- 113) THENCE CONTINUING ALONG THE SACRAMENTO RIVER AND THE BOUNDARY BETWEEN SACRAMENTO AND YOLO COUNTIES, SOUTH 11° 49' EAST 2173 FEET;
- 114) THENCE CONTINUING ALONG THE SACRAMENTO RIVER AND THE BOUNDARY BETWEEN SACRAMENTO AND YOLO COUNTIES, SOUTH 10° 00' EAST 1539 FEET;
- 115) THENCE CONTINUING ALONG THE SACRAMENTO RIVER AND THE BOUNDARY BETWEEN SACRAMENTO AND YOLO COUNTIES, SOUTH 01° 55' EAST 1077 FEET;
- 116) THENCE CONTINUING ALONG THE SACRAMENTO RIVER AND THE BOUNDARY BETWEEN SACRAMENTO AND YOLO COUNTIES, SOUTH 00° 40' WEST 1353 FEET;
- 117) THENCE CONTINUING ALONG THE SACRAMENTO RIVER AND THE BOUNDARY BETWEEN SACRAMENTO AND YOLO COUNTIES, SOUTH 10° 53' WEST 694 FEET;
- 118) THENCE CONTINUING ALONG THE SACRAMENTO RIVER AND THE BOUNDARY BETWEEN SACRAMENTO AND YOLO COUNTIES, SOUTH 25° 44' WEST 884 FEET;
- 119) THENCE CONTINUING ALONG THE SACRAMENTO RIVER AND THE BOUNDARY BETWEEN SACRAMENTO AND YOLO COUNTIES, SOUTH 44° 47' WEST 998 FEET;
- 120) THENCE CONTINUING ALONG THE SACRAMENTO RIVER AND THE BOUNDARY BETWEEN SACRAMENTO AND YOLO COUNTIES, SOUTH 56° 14' WEST 972 FEET;
- 121) THENCE CONTINUING ALONG THE SACRAMENTO RIVER AND THE BOUNDARY BETWEEN SACRAMENTO AND YOLO COUNTIES, SOUTH 67° 28' WEST 1008 FEET;
- 122) THENCE CONTINUING ALONG THE SACRAMENTO RIVER AND THE BOUNDARY BETWEEN SACRAMENTO AND YOLO COUNTIES, SOUTH 75° 08' WEST 784 FEET;
- 123) THENCE CONTINUING ALONG THE SACRAMENTO RIVER AND THE BOUNDARY BETWEEN SACRAMENTO AND YOLO COUNTIES, SOUTH 87° 48' WEST 687 FEET;
- 124) THENCE CONTINUING ALONG THE SACRAMENTO RIVER AND THE BOUNDARY BETWEEN SACRAMENTO AND YOLO COUNTIES, NORTH 85° 35' WEST 1411 FEET;
- 125) THENCE CONTINUING ALONG THE SACRAMENTO RIVER AND THE BOUNDARY BETWEEN SACRAMENTO AND YOLO COUNTIES, NORTH 85° 09' WEST 885 FEET;
- 126) THENCE CONTINUING ALONG THE SACRAMENTO RIVER AND THE BOUNDARY BETWEEN SACRAMENTO AND YOLO COUNTIES, SOUTH 84° 13' WEST 609 FEET;
- 127) THENCE CONTINUING ALONG THE SACRAMENTO RIVER AND THE BOUNDARY BETWEEN SACRAMENTO AND YOLO COUNTIES, SOUTH 65° 03' WEST 632 FEET;
- 128) THENCE CONTINUING ALONG THE SACRAMENTO RIVER AND THE BOUNDARY BETWEEN SACRAMENTO AND YOLO COUNTIES, SOUTH 46° 24' WEST 684 FEET;
- 129) THENCE CONTINUING ALONG THE SACRAMENTO RIVER AND THE BOUNDARY BETWEEN SACRAMENTO AND YOLO COUNTIES, SOUTH 27° 13' WEST 474 FEET;
- 130) THENCE CONTINUING ALONG THE SACRAMENTO RIVER AND THE BOUNDARY BETWEEN SACRAMENTO AND YOLO COUNTIES, SOUTH 02° 53' EAST 582 FEET;
- 131) THENCE CONTINUING ALONG THE SACRAMENTO RIVER AND THE BOUNDARY BETWEEN SACRAMENTO AND YOLO COUNTIES, SOUTH 19° 50' EAST 905 FEET;
- 132) THENCE CONTINUING ALONG THE SACRAMENTO RIVER AND THE BOUNDARY BETWEEN SACRAMENTO AND YOLO COUNTIES, SOUTH 31° 48' EAST 1503 FEET;
- 133) THENCE CONTINUING ALONG THE SACRAMENTO RIVER AND THE BOUNDARY BETWEEN SACRAMENTO AND YOLO COUNTIES, SOUTH 30° 05' EAST 4071 FEET;
- 134) THENCE CONTINUING ALONG THE SACRAMENTO RIVER AND THE BOUNDARY BETWEEN SACRAMENTO AND YOLO COUNTIES, SOUTH 32° 12' EAST 1801 FEET;
- 135) THENCE CONTINUING ALONG THE SACRAMENTO RIVER AND THE BOUNDARY BETWEEN SACRAMENTO AND YOLO COUNTIES, SOUTH 24° 02' EAST 1885 FEET;
- 136) THENCE CONTINUING ALONG THE SACRAMENTO RIVER AND THE BOUNDARY BETWEEN SACRAMENTO AND YOLO COUNTIES, SOUTH 19° 13' EAST 1438 FEET;
- 137) THENCE CONTINUING ALONG THE SACRAMENTO RIVER AND THE BOUNDARY BETWEEN SACRAMENTO AND YOLO COUNTIES, SOUTH 14° 12' EAST 1304 FEET;
- 138) THENCE CONTINUING ALONG THE SACRAMENTO RIVER AND THE BOUNDARY BETWEEN SACRAMENTO AND YOLO COUNTIES, SOUTH 01° 25' WEST 1521 FEET;
- 139) THENCE CONTINUING ALONG THE SACRAMENTO RIVER AND THE BOUNDARY BETWEEN SACRAMENTO AND YOLO COUNTIES, SOUTH 05° 04' WEST 1733 FEET;
- 140) THENCE CONTINUING ALONG THE SACRAMENTO RIVER AND THE BOUNDARY BETWEEN SACRAMENTO AND YOLO COUNTIES, SOUTH 13° 38' WEST 1027 FEET;
- 141) THENCE CONTINUING ALONG THE SACRAMENTO RIVER AND THE BOUNDARY BETWEEN SACRAMENTO AND YOLO COUNTIES, SOUTH 30° 59' WEST 891 FEET;
- 142) THENCE CONTINUING ALONG THE SACRAMENTO RIVER AND THE BOUNDARY BETWEEN SACRAMENTO AND YOLO COUNTIES, SOUTH 43° 10' WEST 670 FEET;
- 143) THENCE CONTINUING ALONG THE SACRAMENTO RIVER AND THE BOUNDARY BETWEEN SACRAMENTO AND YOLO COUNTIES, SOUTH 52° 41' WEST 1537 FEET;
- 144) THENCE CONTINUING ALONG THE SACRAMENTO RIVER AND THE BOUNDARY BETWEEN SACRAMENTO AND YOLO COUNTIES, SOUTH 37° 12' WEST 558 FEET;
- 145) THENCE CONTINUING ALONG THE SACRAMENTO RIVER AND THE BOUNDARY BETWEEN SACRAMENTO AND YOLO COUNTIES, SOUTH 22° 23' WEST 582 FEET;
- 146) THENCE CONTINUING ALONG THE SACRAMENTO RIVER AND THE BOUNDARY BETWEEN SACRAMENTO AND YOLO COUNTIES, SOUTH 01° 20' EAST 657 FEET;
- 147) THENCE CONTINUING ALONG THE SACRAMENTO RIVER AND THE BOUNDARY BETWEEN SACRAMENTO AND YOLO COUNTIES, SOUTH 25° 08' EAST 793 FEET;
- 148) THENCE CONTINUING ALONG THE SACRAMENTO RIVER AND THE BOUNDARY BETWEEN SACRAMENTO AND YOLO COUNTIES, SOUTH 25° 02' EAST 1011 FEET;
- 149) THENCE CONTINUING ALONG THE SACRAMENTO RIVER AND THE BOUNDARY BETWEEN SACRAMENTO AND YOLO COUNTIES, SOUTH 14° 33' EAST 1278 FEET;
- 150) THENCE CONTINUING ALONG THE SACRAMENTO RIVER AND THE BOUNDARY BETWEEN SACRAMENTO AND YOLO COUNTIES, SOUTH 05° 32' EAST 1192 FEET;
- 151) THENCE CONTINUING ALONG THE SACRAMENTO RIVER AND THE BOUNDARY BETWEEN SACRAMENTO AND YOLO COUNTIES, SOUTH 02° 27' EAST 671 FEET;
- 152) THENCE CONTINUING ALONG THE SACRAMENTO RIVER AND THE BOUNDARY BETWEEN SACRAMENTO AND YOLO COUNTIES, SOUTH 04° 21' WEST 884 FEET;
- 153) THENCE CONTINUING ALONG THE SACRAMENTO RIVER AND THE BOUNDARY BETWEEN SACRAMENTO AND YOLO COUNTIES, SOUTH 28° 19' WEST 425 FEET;
- 154) THENCE CONTINUING ALONG THE SACRAMENTO RIVER AND THE BOUNDARY BETWEEN SACRAMENTO AND YOLO COUNTIES, SOUTH 40° 47' WEST 597 FEET;
- 155) THENCE CONTINUING ALONG THE SACRAMENTO RIVER AND THE BOUNDARY BETWEEN SACRAMENTO AND YOLO COUNTIES, SOUTH 60° 00' WEST 498 FEET;
- 156) THENCE CONTINUING ALONG THE SACRAMENTO RIVER AND THE BOUNDARY BETWEEN SACRAMENTO AND YOLO COUNTIES, SOUTH 51° 44' WEST 484 FEET;
- 157) THENCE CONTINUING ALONG THE SACRAMENTO RIVER AND THE BOUNDARY BETWEEN SACRAMENTO AND YOLO COUNTIES, SOUTH 48° 18' WEST 437 FEET;
- 158) THENCE CONTINUING ALONG THE SACRAMENTO RIVER AND THE BOUNDARY BETWEEN SACRAMENTO AND YOLO COUNTIES, SOUTH 42° 03' WEST 1151 FEET;
- 159) THENCE CONTINUING ALONG THE SACRAMENTO RIVER AND THE BOUNDARY BETWEEN SACRAMENTO AND YOLO COUNTIES, SOUTH 38° 35' WEST 1125 FEET;
- 160) THENCE CONTINUING ALONG THE SACRAMENTO RIVER AND THE BOUNDARY BETWEEN SACRAMENTO AND YOLO COUNTIES, SOUTH 37° 48' WEST 1249 FEET;
- 161) THENCE CONTINUING ALONG THE SACRAMENTO RIVER AND THE BOUNDARY BETWEEN SACRAMENTO AND YOLO COUNTIES, SOUTH 47° 53' WEST 882 FEET;
- 162) THENCE CONTINUING ALONG THE SACRAMENTO RIVER AND THE BOUNDARY BETWEEN SACRAMENTO AND YOLO COUNTIES, SOUTH 55° 38' WEST 588 FEET;
- 163) THENCE CONTINUING ALONG THE SACRAMENTO RIVER AND THE BOUNDARY BETWEEN SACRAMENTO AND YOLO COUNTIES, SOUTH 51° 56' WEST 283 FEET;
- 164) THENCE CONTINUING ALONG THE SACRAMENTO RIVER AND THE BOUNDARY BETWEEN SACRAMENTO AND YOLO COUNTIES, SOUTH 72° 31' WEST 581 FEET;
- 165) THENCE CONTINUING ALONG THE SACRAMENTO RIVER AND THE BOUNDARY BETWEEN SACRAMENTO AND YOLO COUNTIES, SOUTH 72° 51' WEST 429 FEET;
- 166) THENCE CONTINUING ALONG THE SACRAMENTO RIVER AND THE BOUNDARY BETWEEN SACRAMENTO AND YOLO COUNTIES, SOUTH 85° 14' WEST 810 FEET;
- 167) THENCE CONTINUING ALONG THE SACRAMENTO RIVER AND THE BOUNDARY BETWEEN SACRAMENTO AND YOLO COUNTIES, SOUTH 78° 18' WEST 877 FEET;
- 168) THENCE CONTINUING ALONG THE SACRAMENTO RIVER AND THE BOUNDARY BETWEEN SACRAMENTO AND YOLO COUNTIES, SOUTH 77° 28' WEST 2873 FEET;

IF
FRAME SURVEYING & MAPPING
 155 S STREET
 DAYTON, OH 45404
 513.769.8841 (Toll Free)
 info@frame-surveying.com

NOTICE OF INTENTION TO ANNEX
DAVIS CEMETERY DISTRICT
203 ANNEXATION

MARCH, 2013 SCALE:
SHEET 13 OF 15

- 168) THENCE CONTINUING ALONG THE SACRAMENTO RIVER AND THE BOUNDARY BETWEEN SACRAMENTO AND YOLO COUNTIES, SOUTH 06° 20' WEST 481 FEET;
- 169) THENCE CONTINUING ALONG THE SACRAMENTO RIVER AND THE BOUNDARY BETWEEN SACRAMENTO AND YOLO COUNTIES, SOUTH 35° 30' WEST 407 FEET;
- 170) THENCE CONTINUING ALONG THE SACRAMENTO RIVER AND THE BOUNDARY BETWEEN SACRAMENTO AND YOLO COUNTIES, SOUTH 34° 05' WEST 785 FEET;
- 171) THENCE CONTINUING ALONG THE SACRAMENTO RIVER AND THE BOUNDARY BETWEEN SACRAMENTO AND YOLO COUNTIES, SOUTH 30° 08' WEST 1034 FEET;
- 172) THENCE CONTINUING ALONG THE SACRAMENTO RIVER AND THE BOUNDARY BETWEEN SACRAMENTO AND YOLO COUNTIES, SOUTH 45° 27' WEST 1110 FEET;
- 173) THENCE CONTINUING ALONG THE SACRAMENTO RIVER AND THE BOUNDARY BETWEEN SACRAMENTO AND YOLO COUNTIES, SOUTH 40° 53' WEST 2049 FEET;
- 174) THENCE CONTINUING ALONG THE SACRAMENTO RIVER AND THE BOUNDARY BETWEEN SACRAMENTO AND YOLO COUNTIES, SOUTH 32° 20' WEST 2027 FEET TO ELK SLAUGH;
- 175) THENCE ALONG ELK SLAUGH AND THE BOUNDARY BETWEEN SACRAMENTO AND YOLO COUNTIES, NORTH 55° 53' WEST 936 FEET;
- 176) THENCE ALONG ELK SLAUGH AND THE BOUNDARY BETWEEN SACRAMENTO AND YOLO COUNTIES, NORTH 38° 31' WEST 714 FEET;
- 177) THENCE ALONG ELK SLAUGH AND THE BOUNDARY BETWEEN SACRAMENTO AND YOLO COUNTIES, NORTH 45° 25' WEST 541 FEET;
- 178) THENCE ALONG ELK SLAUGH AND THE BOUNDARY BETWEEN SACRAMENTO AND YOLO COUNTIES, NORTH 60° 48' WEST 410 FEET;
- 179) THENCE ALONG ELK SLAUGH AND THE BOUNDARY BETWEEN SACRAMENTO AND YOLO COUNTIES, NORTH 81° 28' WEST 480 FEET;
- 180) THENCE ALONG ELK SLAUGH AND THE BOUNDARY BETWEEN SACRAMENTO AND YOLO COUNTIES, SOUTH 17° 03' EAST 393 FEET;
- 181) THENCE ALONG ELK SLAUGH AND THE BOUNDARY BETWEEN SACRAMENTO AND YOLO COUNTIES, SOUTH 12° 42' EAST 441 FEET;
- 182) THENCE ALONG ELK SLAUGH AND THE BOUNDARY BETWEEN SACRAMENTO AND YOLO COUNTIES, SOUTH 15° 30' WEST 522 FEET;
- 183) THENCE ALONG ELK SLAUGH AND THE BOUNDARY BETWEEN SACRAMENTO AND YOLO COUNTIES, SOUTH 34° 10' WEST 410 FEET;
- 184) THENCE ALONG ELK SLAUGH AND THE BOUNDARY BETWEEN SACRAMENTO AND YOLO COUNTIES, SOUTH 49° 25' WEST 278 FEET;
- 185) THENCE ALONG ELK SLAUGH AND THE BOUNDARY BETWEEN SACRAMENTO AND YOLO COUNTIES, SOUTH 75° 18' WEST 478 FEET;
- 186) THENCE ALONG ELK SLAUGH AND THE BOUNDARY BETWEEN SACRAMENTO AND YOLO COUNTIES, SOUTH 85° 00' WEST 401 FEET;
- 187) THENCE ALONG ELK SLAUGH AND THE BOUNDARY BETWEEN SACRAMENTO AND YOLO COUNTIES, SOUTH 34° 47' WEST 320 FEET;

- 188) THENCE ALONG ELK SLAUGH AND THE BOUNDARY BETWEEN SACRAMENTO AND YOLO COUNTIES, SOUTH 04° 21' WEST 561 FEET;
- 189) THENCE ALONG ELK SLAUGH AND THE BOUNDARY BETWEEN SACRAMENTO AND YOLO COUNTIES, SOUTH 04° 12' WEST 1243 FEET;
- 190) THENCE ALONG ELK SLAUGH AND THE BOUNDARY BETWEEN SACRAMENTO AND YOLO COUNTIES, SOUTH 31° 05' WEST 589 FEET;
- 191) THENCE ALONG ELK SLAUGH AND THE BOUNDARY BETWEEN SACRAMENTO AND YOLO COUNTIES, SOUTH 21° 13' WEST 874 FEET;
- 192) THENCE ALONG ELK SLAUGH AND THE BOUNDARY BETWEEN SACRAMENTO AND YOLO COUNTIES, SOUTH 49° 58' WEST 275 FEET TO THE SOUTH LINE OF TOWNSHIP 6 NORTH, RANGE 3 EAST AND THE CORNER COMMON TO SACRAMENTO, SOLANO AND YOLO COUNTIES;
- 193) THENCE ALONG THE SOUTH LINE OF SECTION 36, TOWNSHIP 6 NORTH, RANGE 3 EAST, AND ALONG THE BOUNDARY BETWEEN SOLANO AND YOLO COUNTIES, NORTH 89° 25' WEST 2282 FEET TO THE CORNER COMMON TO SECTIONS 35 AND 38, TOWNSHIP 6 NORTH, RANGE 3 EAST;
- 194) THENCE ALONG THE SOUTH LINE OF SECTION 35, TOWNSHIP 6 NORTH, RANGE 3 EAST, AND ALONG THE BOUNDARY BETWEEN SOLANO AND YOLO COUNTIES, NORTH 89° 25' WEST 2282 FEET TO THE CORNER COMMON TO SECTIONS 34 AND 35, TOWNSHIP 6 NORTH, RANGE 3 EAST;
- 195) THENCE ALONG THE SOUTH LINE OF SECTION 34, TOWNSHIP 6 NORTH, RANGE 3 EAST, AND ALONG THE BOUNDARY BETWEEN SOLANO AND YOLO COUNTIES, NORTH 89° 25' WEST 2282 FEET TO THE CORNER COMMON TO SECTIONS 33 AND 34, TOWNSHIP 6 NORTH, RANGE 3 EAST;
- 196) THENCE ALONG THE SOUTH LINE OF SECTION 33, TOWNSHIP 6 NORTH, RANGE 3 EAST, AND ALONG THE BOUNDARY BETWEEN SOLANO AND YOLO COUNTIES, NORTH 89° 25' WEST 2282 FEET TO THE CORNER COMMON TO SECTIONS 32 AND 33, TOWNSHIP 6 NORTH, RANGE 3 EAST;
- 197) THENCE ALONG THE SOUTH LINE OF SECTION 32, TOWNSHIP 6 NORTH, RANGE 3 EAST, AND ALONG THE BOUNDARY BETWEEN SOLANO AND YOLO COUNTIES, NORTH 89° 25' WEST 2282 FEET TO THE CORNER COMMON TO SECTIONS 31 AND 32, TOWNSHIP 6 NORTH, RANGE 3 EAST;
- 198) THENCE ALONG THE SOUTH LINE OF SECTION 31, TOWNSHIP 6 NORTH, RANGE 3 EAST, AND ALONG THE BOUNDARY BETWEEN SOLANO AND YOLO COUNTIES, NORTH 89° 25' WEST 2282 FEET TO THE CORNER COMMON TO SECTIONS 30 AND 31, TOWNSHIP 6 NORTH, RANGE 3 EAST;
- 199) THENCE ALONG THE LINE BETWEEN SECTION 30, TOWNSHIP 6 NORTH, RANGE 3 EAST, AND SECTION 31, TOWNSHIP 6 NORTH, RANGE 3 EAST, 100' AL 31' WEST 5293 FEET TO THE CORNER COMMON TO SECTIONS 29 AND 30, TOWNSHIP 6 NORTH, RANGE 2 EAST, AND SECTIONS 30 AND 31, TOWNSHIP 6 NORTH, RANGE 3 EAST;
- 200) THENCE ALONG THE LINE BETWEEN SECTION 29, TOWNSHIP 6 NORTH, RANGE 2 EAST, AND SECTION 30, TOWNSHIP 6 NORTH, RANGE 2 EAST, AND ALONG THE BOUNDARY BETWEEN SOLANO AND YOLO COUNTIES, NORTH 00° 01' WEST 5293 FEET TO THE CORNER COMMON TO SECTIONS 24 AND 25, TOWNSHIP 6 NORTH, RANGE 2 EAST, AND SECTIONS 19 AND 30, TOWNSHIP 6 NORTH, RANGE 3 EAST;
- 201) THENCE ALONG THE LINE BETWEEN SECTION 24, TOWNSHIP 6 NORTH, RANGE 2 EAST, AND SECTION 30, TOWNSHIP 6 NORTH, RANGE 2 EAST, AND ALONG THE BOUNDARY BETWEEN SOLANO AND YOLO COUNTIES, NORTH 00° 01' WEST 5293 FEET TO THE CORNER COMMON TO SECTIONS 13 AND 24, TOWNSHIP 6 NORTH, RANGE 2 EAST, AND SECTIONS 18 AND 19, TOWNSHIP 6 NORTH, RANGE 3 EAST;
- 202) THENCE ALONG THE LINE BETWEEN SECTION 13, TOWNSHIP 6 NORTH, RANGE 2 EAST, AND SECTION 18, TOWNSHIP 6 NORTH, RANGE 2 EAST, AND ALONG THE BOUNDARY BETWEEN SOLANO AND YOLO COUNTIES, NORTH 00° 01' WEST 5293 FEET TO THE CORNER COMMON TO SECTIONS 12 AND 13, TOWNSHIP 6 NORTH, RANGE 2 EAST, AND SECTIONS 7 AND 18, TOWNSHIP 6 NORTH, RANGE 3 EAST;

- 203) THENCE ALONG THE LINE BETWEEN SECTION 12, TOWNSHIP 6 NORTH, RANGE 2 EAST, AND SECTION 13, TOWNSHIP 6 NORTH, RANGE 2 EAST, AND ALONG THE BOUNDARY BETWEEN SOLANO AND YOLO COUNTIES, NORTH 00° 01' WEST 5293 FEET TO THE CORNER COMMON TO SECTIONS 6 AND 7, TOWNSHIP 6 NORTH, RANGE 3 EAST;
- 204) THENCE ALONG THE LINE BETWEEN SECTION 1, TOWNSHIP 6 NORTH, RANGE 2 EAST, AND SECTION 6, TOWNSHIP 6 NORTH, RANGE 3 EAST, AND ALONG THE BOUNDARY BETWEEN SOLANO AND YOLO COUNTIES, NORTH 00° 09' EAST 5300 FEET TO THE CORNER COMMON TO TOWNSHIP 6 NORTH, RANGE 2 EAST, AND TOWNSHIP 7 NORTH, RANGE 3 EAST;
- 205) THENCE ALONG THE LINE BETWEEN SECTION 30, TOWNSHIP 7 NORTH, RANGE 2 EAST, AND SECTION 31, TOWNSHIP 7 NORTH, RANGE 3 EAST, AND ALONG THE BOUNDARY BETWEEN SOLANO AND YOLO COUNTIES, NORTH 00° 13' WEST 5298 FEET TO THE CORNER COMMON TO SECTIONS 25 AND 30, TOWNSHIP 7 NORTH, RANGE 2 EAST, AND SECTIONS 30 AND 31, TOWNSHIP 7 NORTH, RANGE 3 EAST;
- 206) THENCE ALONG THE LINE BETWEEN SECTION 25, TOWNSHIP 7 NORTH, RANGE 2 EAST, AND SECTION 30, TOWNSHIP 7 NORTH, RANGE 2 EAST, AND ALONG THE BOUNDARY BETWEEN SOLANO AND YOLO COUNTIES, NORTH 00° 04' WEST 5331 FEET TO THE CORNER COMMON TO SECTIONS 24 AND 25, TOWNSHIP 7 NORTH, RANGE 2 EAST, AND SECTIONS 19 AND 30, TOWNSHIP 7 NORTH, RANGE 3 EAST;
- 207) THENCE ALONG THE LINE BETWEEN SECTION 24, TOWNSHIP 7 NORTH, RANGE 2 EAST, AND SECTION 19, TOWNSHIP 7 NORTH, RANGE 3 EAST, AND ALONG THE BOUNDARY BETWEEN SOLANO AND YOLO COUNTIES, NORTH 00° 13' EAST 5298 FEET TO THE CORNER COMMON TO SECTIONS 13 AND 24, TOWNSHIP 7 NORTH, RANGE 2 EAST, AND SECTIONS 18 AND 19, TOWNSHIP 7 NORTH, RANGE 3 EAST;
- 208) THENCE ALONG THE LINE BETWEEN SECTION 13, TOWNSHIP 7 NORTH, RANGE 2 EAST, AND SECTION 18, TOWNSHIP 7 NORTH, RANGE 2 EAST, AND ALONG THE BOUNDARY BETWEEN SOLANO AND YOLO COUNTIES, NORTH 00° 13' WEST 5298 FEET TO THE CORNER COMMON TO SECTIONS 12 AND 13, TOWNSHIP 7 NORTH, RANGE 2 EAST, AND SECTIONS 7 AND 18, TOWNSHIP 7 NORTH, RANGE 3 EAST;
- 209) THENCE ALONG THE LINE BETWEEN SECTION 12, TOWNSHIP 7 NORTH, RANGE 2 EAST, AND SECTION 7, TOWNSHIP 7 NORTH, RANGE 3 EAST, AND ALONG THE BOUNDARY BETWEEN SOLANO AND YOLO COUNTIES, NORTH 00° 35' WEST 5312 FEET TO THE CORNER COMMON TO SECTIONS 1 AND 12, TOWNSHIP 7 NORTH, RANGE 2 EAST, AND SECTIONS 6 AND 7, TOWNSHIP 7 NORTH, RANGE 3 EAST;
- 210) THENCE ALONG THE LINE BETWEEN SECTION 1, TOWNSHIP 7 NORTH, RANGE 2 EAST, AND SECTION 7, TOWNSHIP 7 NORTH, RANGE 3 EAST, AND ALONG THE BOUNDARY BETWEEN SOLANO AND YOLO COUNTIES, NORTH 00° 13' EAST 4888 FEET TO THE NORTHEAST CORNER OF SECTION 1, TOWNSHIP 7 NORTH, RANGE 2 EAST, AND THE NORTHWEST CORNER OF SECTION 6, TOWNSHIP 7 NORTH, RANGE 3 EAST;
- 211) THENCE ALONG THE NORTH LINE OF TOWNSHIP 7 NORTH, RANGE 2 EAST AND THE SOUTH LINE OF TOWNSHIP 8 NORTH, RANGE 2 EAST AND ALONG THE BOUNDARY BETWEEN SOLANO AND YOLO COUNTIES, WEST 616 FEET TO THE CORNER COMMON TO SECTION 36, TOWNSHIP 8 NORTH, RANGE 2 EAST AND SECTION 31, TOWNSHIP 8 NORTH, RANGE 3 EAST;
- 212) THENCE ALONG THE LINE BETWEEN SECTIONS 36, TOWNSHIP 8 NORTH, RANGE 2 EAST, AND SECTION 31, TOWNSHIP 8 NORTH, RANGE 3 EAST, AND ALONG THE BOUNDARY BETWEEN SOLANO AND YOLO COUNTIES, NORTH 00° 05' WEST 5185 FEET TO THE CORNER COMMON TO SECTIONS 30 AND 31, TOWNSHIP 8 NORTH, RANGE 2 EAST, AND SECTIONS 20 AND 31, TOWNSHIP 8 NORTH, RANGE 3 EAST. SAID CORNER BEING ON THE BOUNDARY OF THE DAVIS CEMETERY DISTRICT;
- 213) THENCE ALONG SAID BOUNDARY AND THE LINE BETWEEN SECTIONS 30 AND 31, TOWNSHIP 8 NORTH, RANGE 3 EAST, SOUTH 88° 43' EAST 5300 FEET TO THE CORNER COMMON TO SECTIONS 29, 30, 31 AND 32, TOWNSHIP 8 NORTH, RANGE 3 EAST;

- 418) THENCE CONTINUING ALONG SAID BOUNDARY AND THE LINE BETWEEN SECTIONS 28 AND 32 SOUTH 89° 27' EAST 5267 FEET TO THE CORNER COMMON TO SECTIONS 28, 29, 32 AND 33, TOWNSHIP 8 NORTH, RANGE 3 EAST;
- 419) THENCE CONTINUING ALONG SAID BOUNDARY AND THE LINE BETWEEN SECTIONS 28 AND 29 NORTH 01° 23' EAST 5268 FEET TO THE CORNER COMMON TO SECTIONS 20, 21, 28 AND 29, TOWNSHIP 8 NORTH, RANGE 3 EAST;
- 420) THENCE CONTINUING ALONG SAID BOUNDARY AND THE LINE BETWEEN SECTIONS 20 AND 21 NORTH 00° 15' EAST 5458 FEET TO THE CORNER COMMON TO SECTIONS 16, 17, 20 AND 21, TOWNSHIP 8 NORTH, RANGE 3 EAST;
- 421) THENCE CONTINUING ALONG SAID BOUNDARY AND THE LINE BETWEEN SECTIONS 16 AND 17 NORTH 00° 11' EAST 5132 FEET TO THE CORNER COMMON TO SECTIONS 8, 9, 16 AND 17, TOWNSHIP 8 NORTH, RANGE 3 EAST;
- 422) THENCE CONTINUING ALONG SAID BOUNDARY AND THE LINE BETWEEN SECTIONS 8 AND 9 NORTH 00° 12' WEST 5883 FEET TO THE CORNER COMMON TO SECTIONS 4, 5, 8 AND 9, TOWNSHIP 8 NORTH, RANGE 3 EAST;
- 423) THENCE CONTINUING ALONG SAID BOUNDARY AND THE LINE BETWEEN SECTIONS 4 AND 5 NORTH 01° 52' EAST 4880 FEET TO THE CORNER COMMON TO SECTIONS 4 AND 5, TOWNSHIP 8 NORTH, RANGE 3 EAST; AND SECTIONS 32 AND 33, TOWNSHIP 9 NORTH, RANGE 3 EAST;
- 424) THENCE CONTINUING ALONG SAID BOUNDARY AND THE LINE BETWEEN SECTIONS 32 AND 33 NORTH 01° 10' EAST 5313 FEET TO THE CORNER COMMON TO SECTIONS 28, 29, 32 AND 33, TOWNSHIP 9 NORTH, RANGE 3 EAST;
- 425) THENCE CONTINUING ALONG SAID BOUNDARY AND THE LINE BETWEEN SECTIONS 28 AND 32 SOUTH 89° 53' WEST 5233 FEET TO THE CORNER COMMON TO SECTIONS 28, 30, 31 AND 32, TOWNSHIP 9 NORTH, RANGE 3 EAST;
- 426) THENCE CONTINUING ALONG SAID BOUNDARY AND THE LINE BETWEEN SECTIONS 30 AND 31 WEST 5245 FEET TO THE CORNER COMMON TO SECTIONS 28 AND 31, TOWNSHIP 9 NORTH, RANGE 2 EAST;
- 427) THENCE CONTINUING ALONG SAID BOUNDARY AND THE LINE BETWEEN SECTIONS 23 AND 25 NORTH 89° 30' WEST 5408 FEET TO THE CORNER COMMON TO SECTIONS 23, 25, 35 AND 36, TOWNSHIP 9 NORTH, RANGE 2 EAST;
- 428) THENCE CONTINUING ALONG SAID BOUNDARY AND THE LINE BETWEEN SECTIONS 26 AND 35 NORTH 89° 07' WEST 5189 FEET TO THE CORNER COMMON TO SECTIONS 26, 27, 34 AND 35, TOWNSHIP 9 NORTH, RANGE 2 EAST;
- 429) THENCE CONTINUING ALONG SAID BOUNDARY AND THE LINE BETWEEN SECTIONS 27 AND 34 NORTH 89° 48' WEST 5281 FEET TO THE CORNER COMMON TO SECTIONS 27, 28, 33 AND 34, TOWNSHIP 9 NORTH, RANGE 2 EAST;
- 430) THENCE CONTINUING ALONG SAID BOUNDARY AND THE LINE BETWEEN SECTIONS 28 AND 33 NORTH 89° 18' WEST 5574 FEET TO THE CORNER COMMON TO SECTIONS 28, 29, 32 AND 33, TOWNSHIP 9 NORTH, RANGE 2 EAST;
- 431) THENCE CONTINUING ALONG SAID BOUNDARY AND THE LINE BETWEEN SECTIONS 32 AND 33 SOUTH 01° 04' WEST 5317 FEET TO THE CORNER COMMON TO SECTIONS 32 AND 33, TOWNSHIP 9 NORTH, RANGE 2 EAST; AND SECTIONS 3 AND 4, TOWNSHIP 8 NORTH, RANGE 2 EAST;
- 432) THENCE CONTINUING ALONG SAID BOUNDARY AND THE LINE BETWEEN SECTION 3, TOWNSHIP 8 NORTH, RANGE 2 EAST, AND SECTION 35, TOWNSHIP 8 NORTH, RANGE 2 EAST, WEST 5218 FEET TO THE CORNER COMMON TO SECTIONS 3 AND 35, TOWNSHIP 8 NORTH, RANGE 2 EAST; AND SECTIONS 31 AND 32, TOWNSHIP 8 NORTH, RANGE 2 EAST;

- 433) THENCE CONTINUING ALONG SAID BOUNDARY AND THE LINE BETWEEN SECTION 6, TOWNSHIP 8 NORTH, RANGE 2 EAST AND SECTION 31, TOWNSHIP 8 NORTH, RANGE 2 EAST, NORTH 89° 23' WEST 5488 FEET TO THE CORNER COMMON TO SECTIONS 1 AND 10, TOWNSHIP 8 NORTH, RANGE 2 EAST; AND SECTIONS 31 AND 36, TOWNSHIP 9 NORTH, RANGE 2 EAST;
 - 434) THENCE CONTINUING ALONG SAID BOUNDARY AND THE LINE BETWEEN SECTION 1, TOWNSHIP 8 NORTH, RANGE 2 EAST AND SECTION 36, TOWNSHIP 8 NORTH, RANGE 2 EAST, NORTH 89° 57' WEST 5307 FEET;
 - 435) THENCE CONTINUING ALONG SAID BOUNDARY AND THE LINE BETWEEN SECTION 2, TOWNSHIP 8 NORTH, RANGE 2 EAST AND SECTION 35, TOWNSHIP 8 NORTH, RANGE 2 EAST, WEST 5267 FEET TO THE CORNER COMMON TO SECTIONS 2 AND 3, TOWNSHIP 8 NORTH, RANGE 2 EAST; AND SECTIONS 34 AND 35, TOWNSHIP 9 NORTH, RANGE 2 EAST;
 - 436) THENCE CONTINUING ALONG SAID BOUNDARY AND THE LINE BETWEEN SECTION 3, TOWNSHIP 8 NORTH, RANGE 2 EAST AND SECTION 34, TOWNSHIP 9 NORTH, RANGE 2 EAST, NORTH 89° 44' WEST 5287 FEET TO THE POINT OF BEGINNING.
- CONTAINING 126, 130 ACRES, MORE OR LESS

IF
LSM

FRAME SURVEYING & MAPPING
609 A STREET DAVIS, CA 95616
925.756.8594 (v&t) jhframe@dcn.org

NOTICE OF INTENTION TO ANNEX
DAVIS CEMETERY DISTRICT
2013 ANNEXATION

MARCH, 2013	SCALE:
SHEET 15 OF 15	