



Yolo County Airport (KDWA)



Airport Information for Pilots

CONTACT INFORMATION

EMERGENCY 911

Davis Flight Support

On-Airport assistance
530-759-8766

**West Plainfield Fire
Department**

From a cell
530-666-6612

Yolo County Sheriff

Non-emergency crime
530-666-8282

Airport Manager

All other matters
530-666-8114 or 8066

Recommended best practices for Airport Noise Abatement

While operating under Visual Flight Rules, unless considered unsafe or otherwise instructed by traffic control, AOPA* suggests pilots observe the following:

- Approaches to Runway: Pilots are encouraged to refer to the diagram depicting entry and departure patterns for all aircraft at Yolo County Airport.
- Maintain published recommended pattern altitudes as long as practical.
- Do not descend below visual approach slope indicator during final approach.
- Practice single-engine departure procedures with twin-engine aircraft should be kept to a minimum.
- Missed approach throttle setting should be minimized, consistent with safety.
- Establish minimum throttle settings as soon as possible after takeoff consistent with safety.
- No turns should be made after takeoff from either runway until past the Airport boundary.

*Aircraft Owners and Pilots Association

See also

<http://www.yolocounty.org/Index.aspx?page=1350>



**Ensuring Safe aviation
at and near
Yolo County Airport**

July 2013

Safe Operations

@ Yolo County Airport

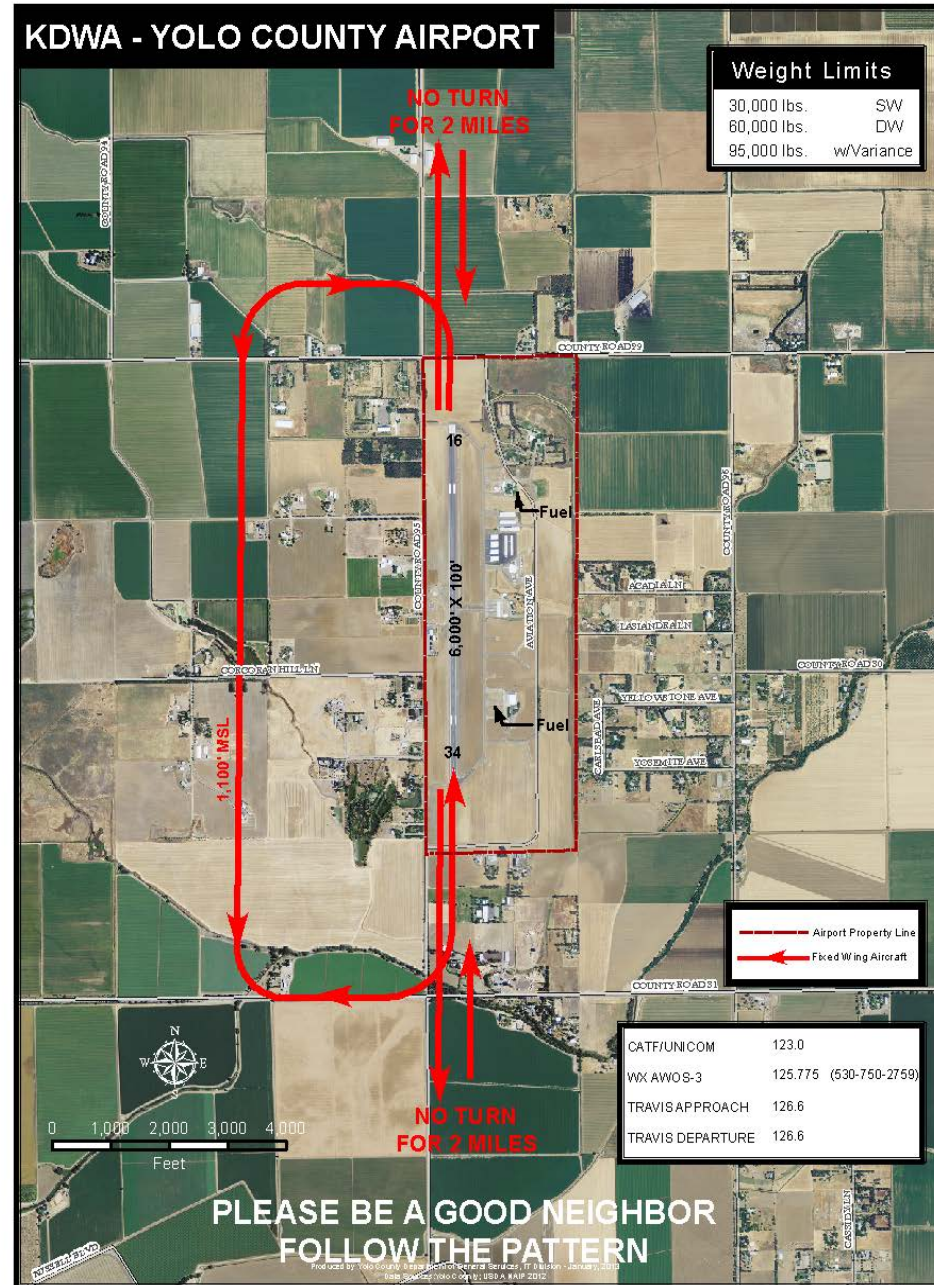
The rules in this document can be found in Yolo County Codes, Title 4, Chapter 5, Article 3, Sections 4-5.301 through 4-5.312

Traffic pattern.

1. The Airport traffic pattern is the standard left traffic pattern for Runway 34, right for RW 16 (See photo).
2. The minimum height in the pattern is 1,100 feet MSL, or about 1,000 feet above ground.
3. Low flying shall be prohibited except when climbing from a takeoff or descending for a landing within the designated airport approach or departure zone.
4. All fixed wing aircraft shall observe the approved traffic pattern, emergency landings excepted.

Aircraft Operations

5. All aircraft shall be operated in strict conformity with all laws, rules, and regulations of the County, FAA Caltrans Division of Aeronautics.
6. Aircraft shall be parked in designated areas only, shall have parking brakes set and wheels firmly blocked to prevent movement, and/or shall be firmly secured to the ground by ropes or chains.
7. Aircraft shall be stopped and all engines shut off at a minimum distance of twenty-five (25') feet before entering any hangar or building.
8. Starting or running an aircraft engine in or taxiing a running aircraft to or from any hangar is specifically prohibited.
9. Engine run-ups and tests shall be performed in areas designated by the fixed base operator and approved by the Board of Supervisors.
10. All aircraft shall land and take off only on designated runways.
11. Touch-and-go operations shall be prohibited between 10:00 p.m. and 6:00 a.m.



12. All aircraft must be equipped with properly functioning brakes
13. Formation flying within the designated traffic pattern and/or simultaneous landings and/or take-offs shall be prohibited.
14. Weight limits are 30,000# single wheel and 60,000# dual wheel except in an emergency. Up to 95,000# with prior permission
15. Aircraft shall have all engines which are operational in operation when landing and taking off. Simulated forced landings by students shall be forbidden unless accompanied by a certified instructor.
16. No person shall operate a non-licensed or unworthy aircraft or an aircraft with a known malfunction at the Yolo County Airport without the prior approval of an FAA permit, except in an emergency.
17. No aircraft shall remain idle on the airport runways.
18. No aircraft shall block the entrance to the airport, taxiways, or runways, other than for the normal time required to perform routine check-outs prior to takeoff.
19. Aircraft shall not cross or enter upon a runway until the pilot has stopped and assured by visual inspection that there is no danger of collision with any person or object.
20. No aircraft engine shall be started or operated unless a competent aircraft operator is in the aircraft attending to the controls or the aircraft is being serviced or repaired in an area designated for the purpose and the aircraft is properly secured to prevent accidental movement.