

Notes: Years with Fremont Spill (top) and without (bottom)



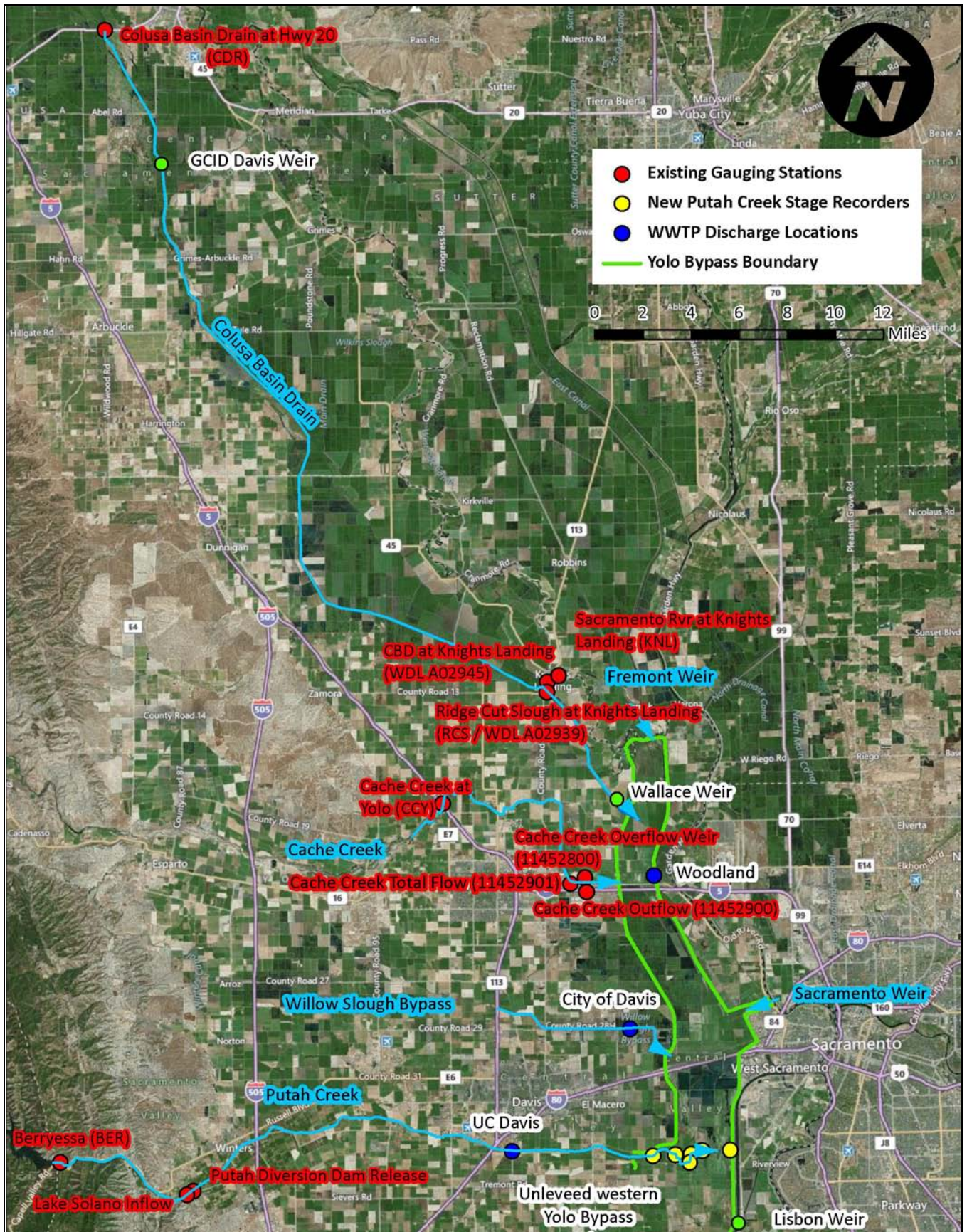
Yolo Bypass Drainage and Water Infrastructure Improvement Study

Relative tributary yearly maximum flow

Project No. 12-1039

Created By: AMS

Figure 1



Notes: Image courtesy of BingMaps (2009).



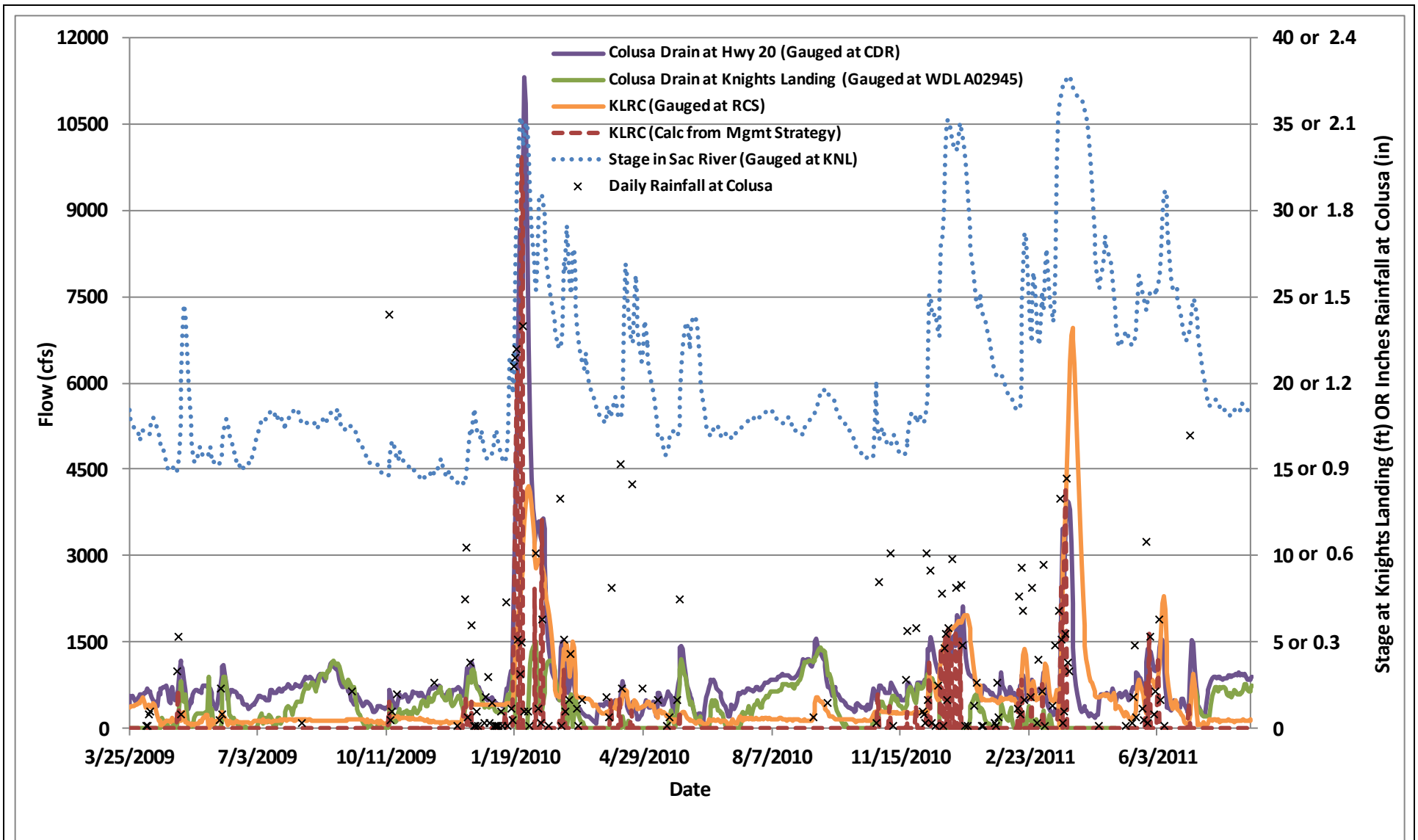
Yolo Bypass Drainage and Water Infrastructure Improvement Study

Tributary gauging stations

Project No. 12-1039

Created By: AMS

Figure 2



Notes: Daily flow and stage data.



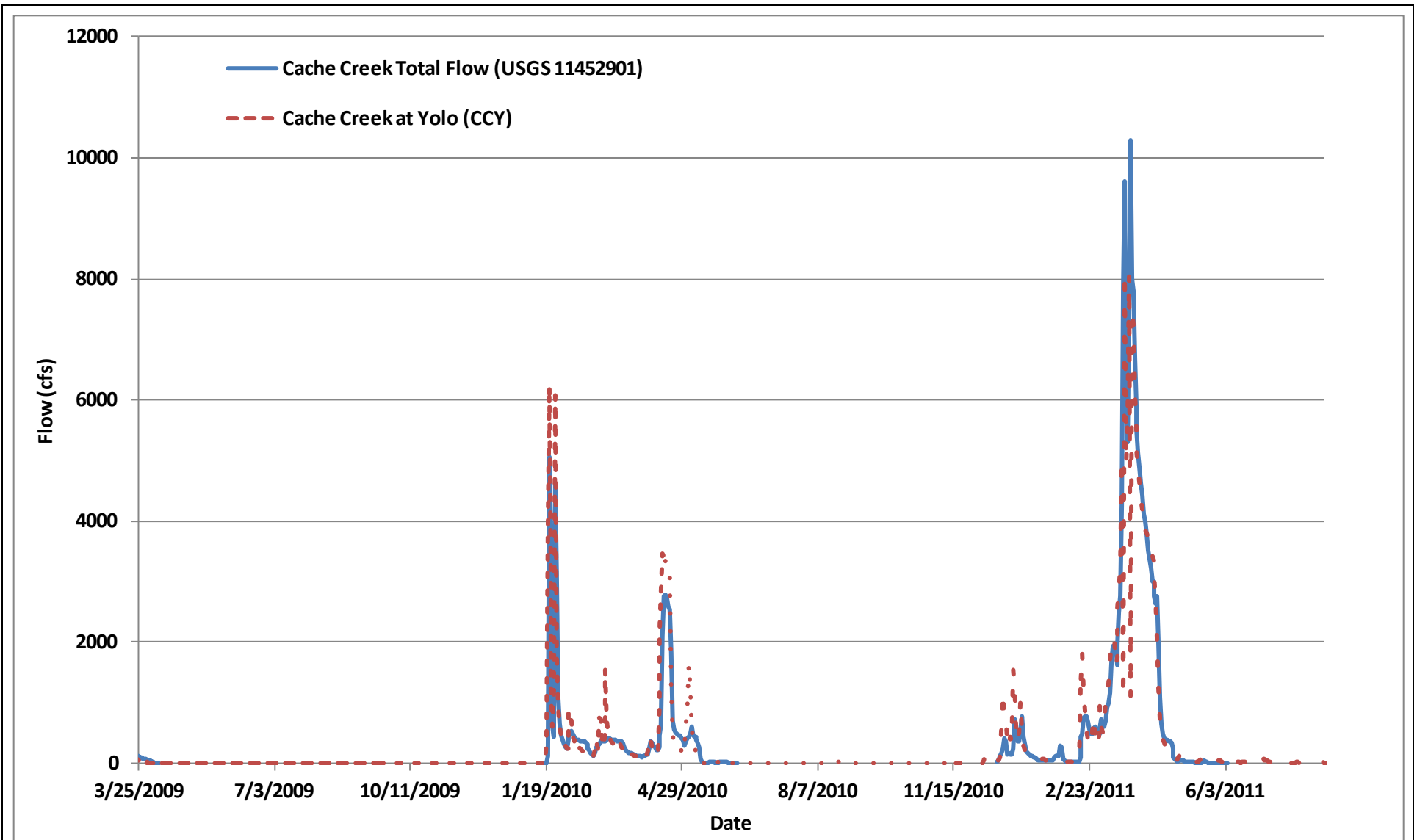
Yolo Bypass Drainage and Water Infrastructure Improvement Study

KLRC estimation validation

Project No. 12-1039

Created By: AMS

Figure 3



Notes: CCY is gauged daily flow at I-5 upstream of the Settling Basin, Cache Creek Total Flow is the composite of the overflow weir and low flow channel gauged data at 11452800 and 11452900 respectively. Note small peak attenuation and differences in event peak magnitude.



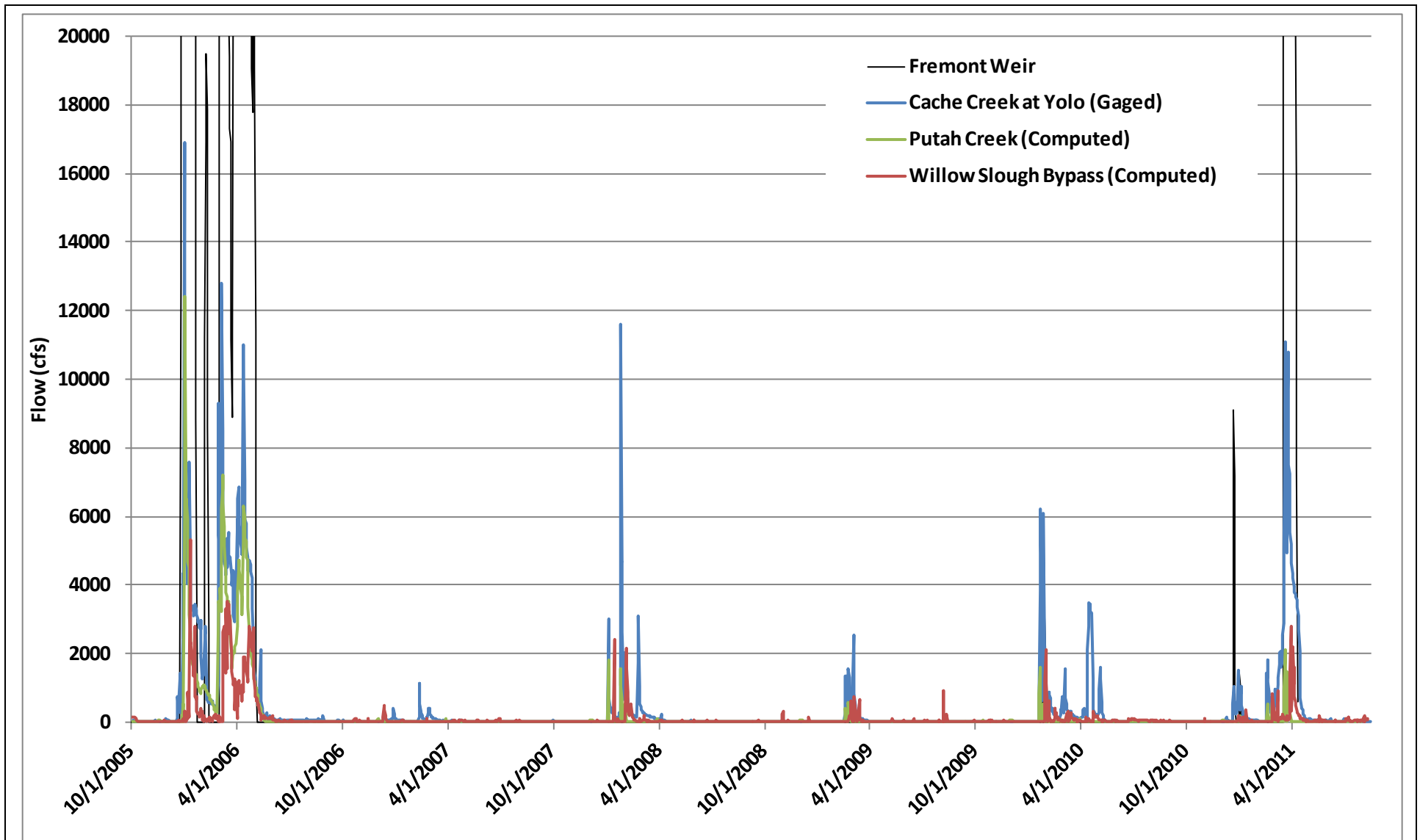
Yolo Bypass Drainage and Water Infrastructure Improvement Study

Cache Creek inflow to Yolo Bypass

Project No. 12-1039

Created By: AMS

Figure 4



Notes: Recent hydrologic datasets for tributaries by Yolo Bypass Management Strategy (Yolo Basin Foundation, 2001) rationale. Note relative increase in Putah Creek relative to Willow Slough when Berryessa spills.

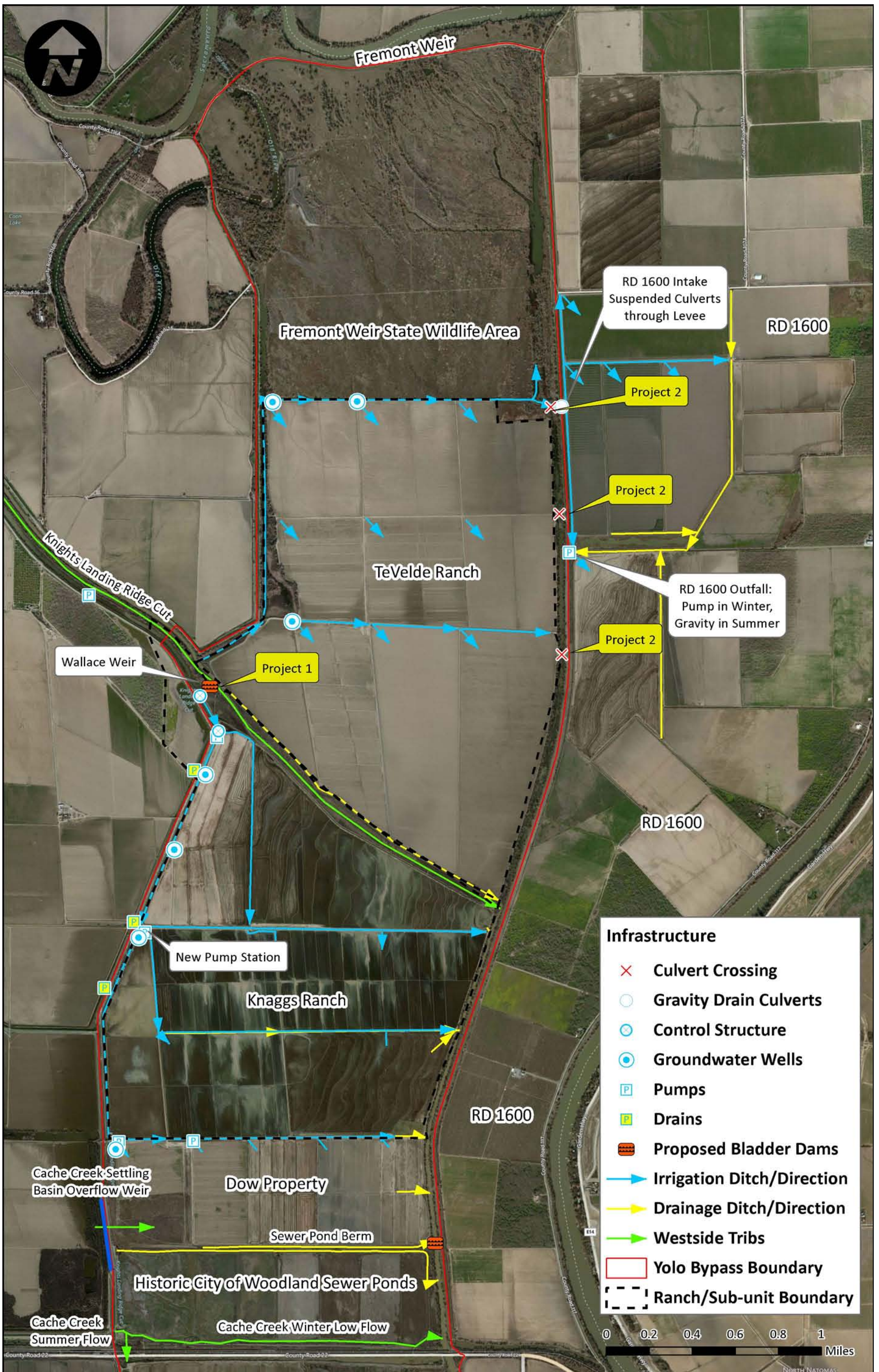


Yolo Bypass Drainage and Water Infrastructure Improvement Study
Recent Cache, Putah and Willow Slough comparison

Project No. 12-1039

Created By: AMS

Figure 5



Notes: annotated on large scale map with John Brennan on Jan 23, 2013. Draft pending revisions and updates. Image courtesy BingMaps 2009. RD 1600 area bounded by east Bypass levee, Sac River and County Road 22.

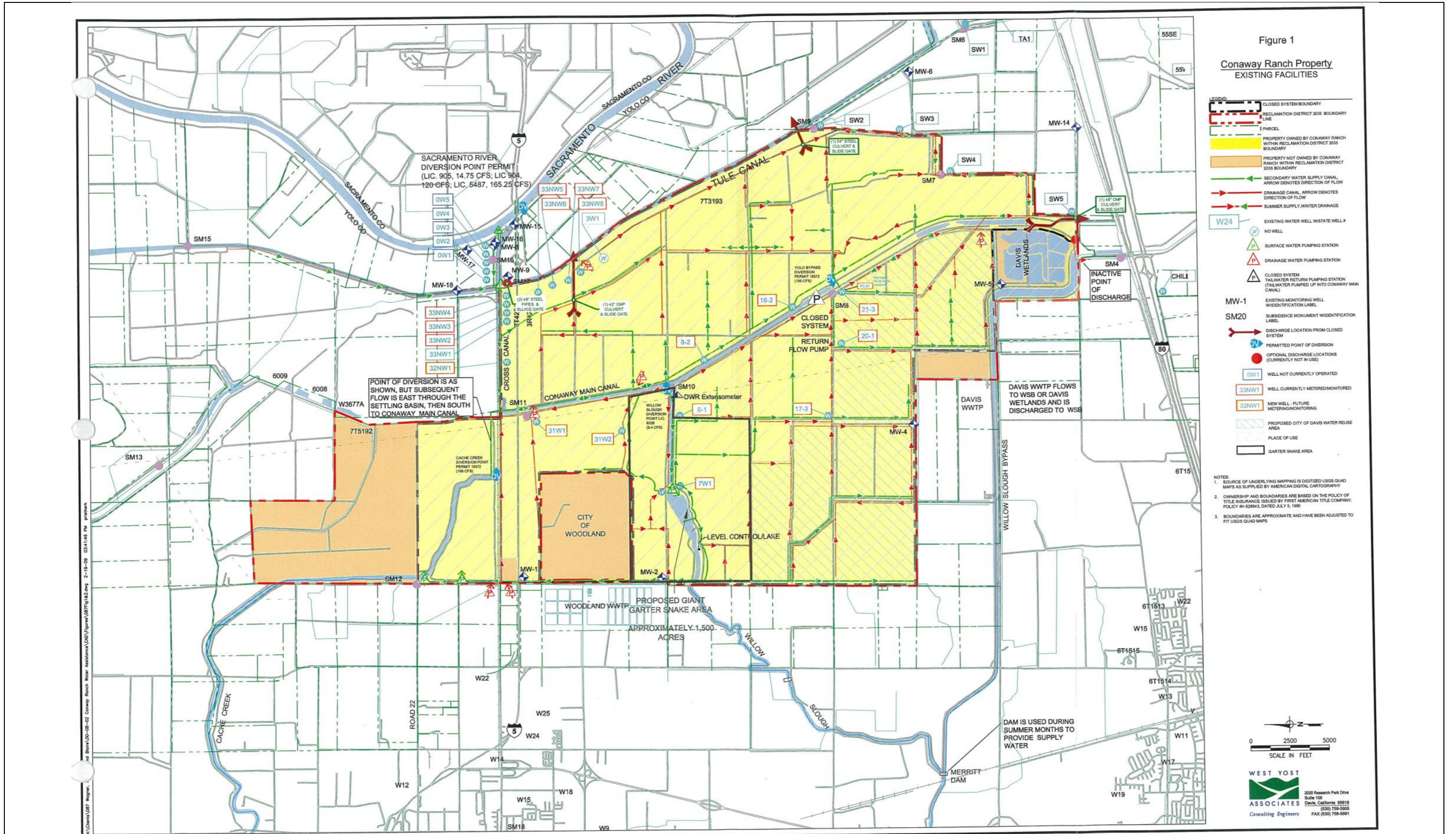


Yolo Bypass Drainage and Water Infrastructure Improvement Study
North of Interstate 5 Causeway – existing function

Project No. 12-1039

Created By: AMS

Figure 6



Notes: "Conway Ranch Property: Existing Facilities" Map provided by Mike Hall. Prepared by West Yost.



Yolo Bypass Drainage and Water Infrastructure Improvement Study

Conway Ranch – existing function

Project No. 12-1039

Created By: AMS

Figure 7

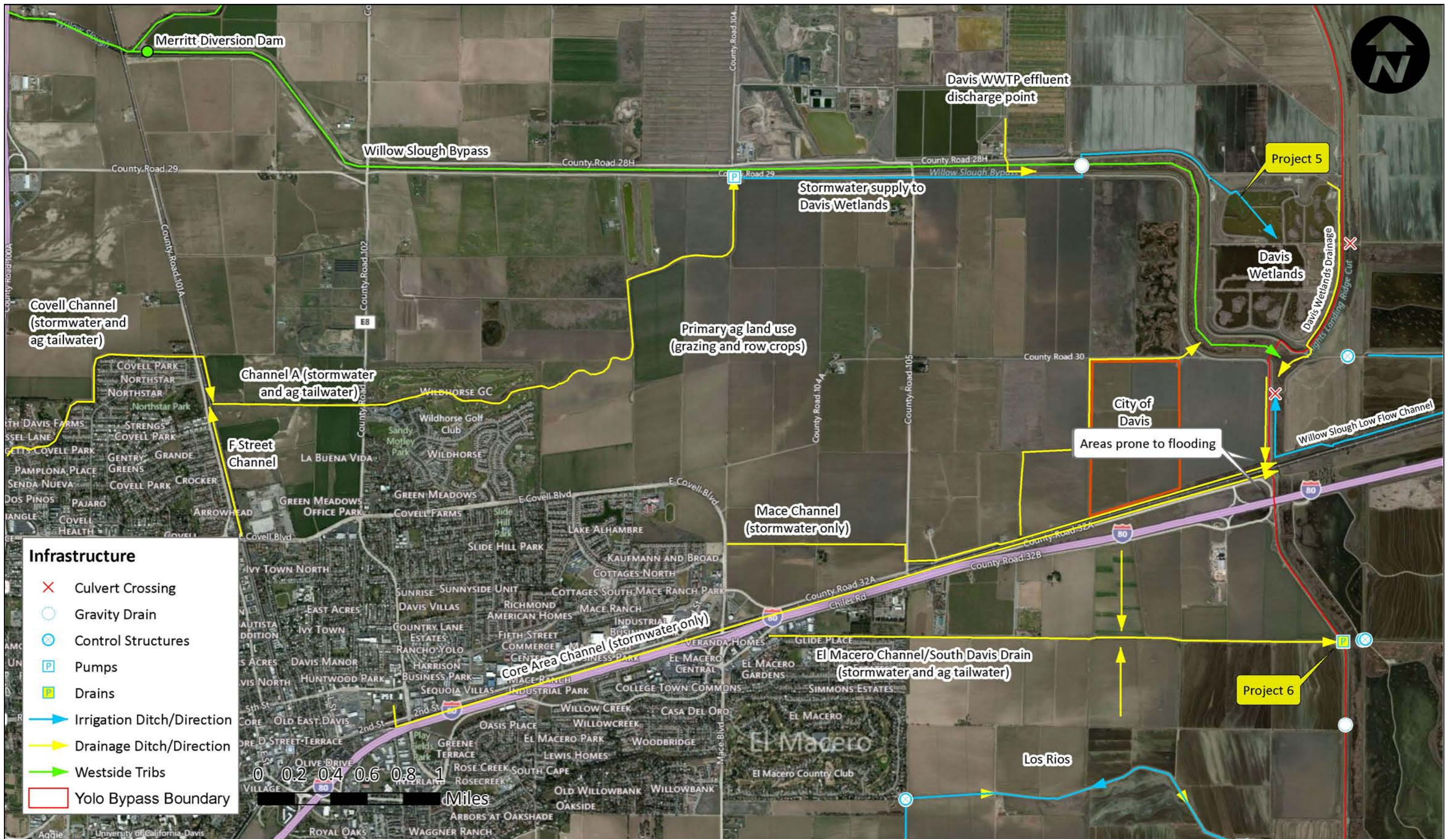


Notes: Red circles denote potential culvert crossings for replacement under Project 11: Local Agricultural Crossing Improvements. Aerial courtesy of BingMaps, 2009. Draft pending additions, revisions and updates.



Yolo Bypass Drainage and Water Infrastructure Improvement Study
Swanston Ranch – existing function

Project No. 12-1039	Created By: AMS	Figure 8
---------------------	-----------------	-----------------



Notes: Aerial courtesy of BingMaps 2009. Draft pending additions and revisions.

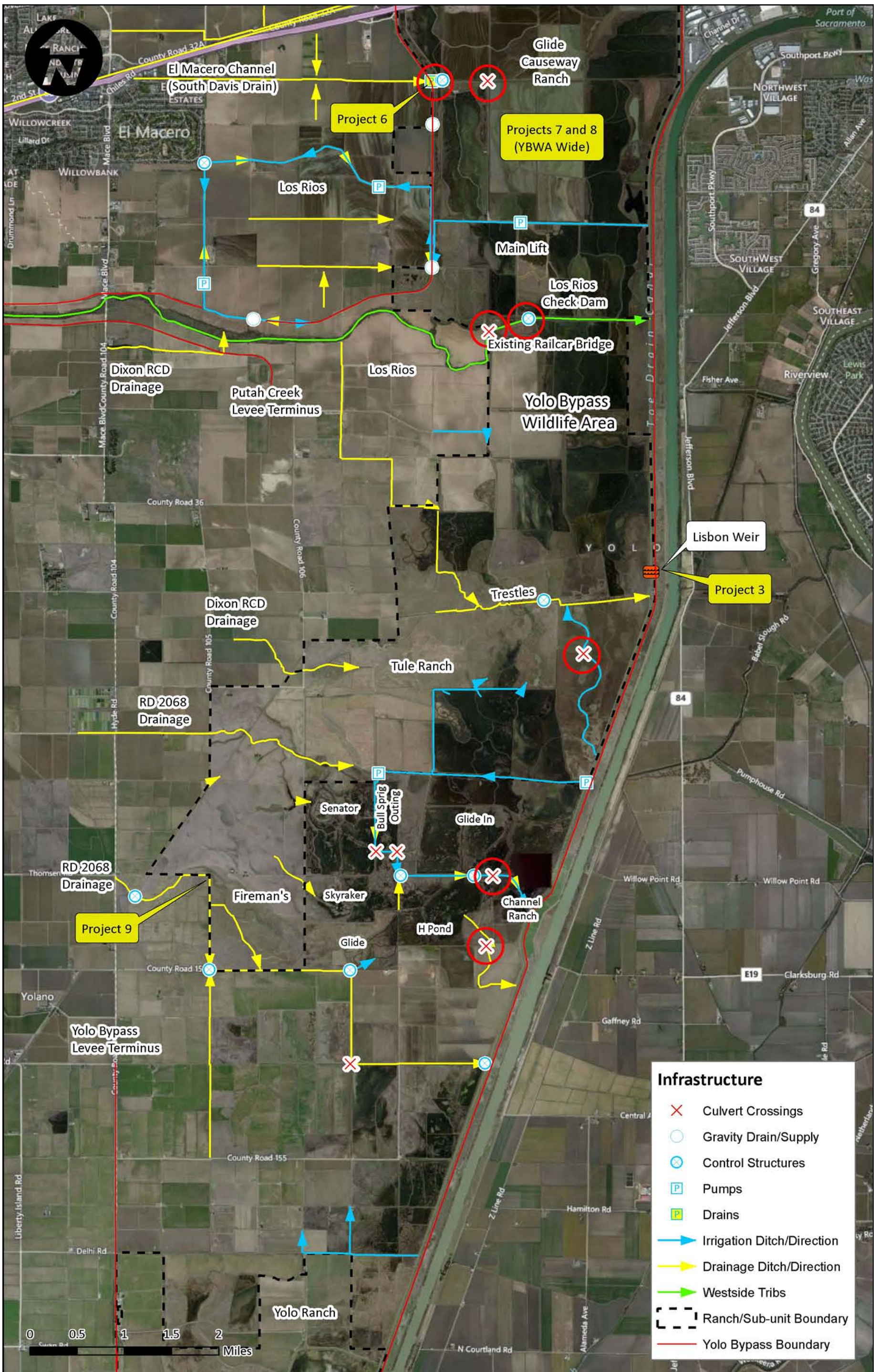


Yolo Bypass Drainage and Infrastructure Study
City of Davis to Bypass – existing function

Project No. 12-1039

Created By: AMS

Figure 9



Infrastructure

- ✕ Culvert Crossings
- Gravity Drain/Supply
- ⊗ Control Structures
- Ⓟ Pumps
- Ⓜ Drains
- ➡ Irrigation Ditch/Direction
- ➡ Drainage Ditch/Direction
- ➡ Westside Tribes
- Ranch/Sub-unit Boundary
- Yolo Bypass Boundary

Notes: Red circles denote agricultural crossings for improvement under Project 11. Aerial courtesy of BingMaps 2009. Draft pending additions and revisions.



Yolo Bypass Drainage and Water Infrastructure Improvement Study
Southern Yolo Bypass – existing function

Project No. 12-1039 Created By: AMS **Figure 11**



Notes: Locations were identified based on past abatement efforts in these areas. Aerial courtesy of BingMaps 2009. Draft pending additions and revisions.



Yolo Bypass Drainage and Water Infrastructure Improvement Study
Drainage concern areas for SYMVCD
 Project No. 12-1039 Created By: AMS **Figure 12**