



**Unincorporated Yolo County
Community Profile Information**

Yolo County Operational Area Multi-Jurisdictional Hazard Mitigation Plan

December 2012

Table of Contents

GENERAL INFORMATION	3
Overview	3
UNINCORPORATED PLANNING AREAS.....	5
Brooks.....	5
Capay	7
Clarksburg.....	9
Dunnigan.....	11
Elkhorn	13
El Macero	15
Esparto.....	17
Guinda.....	19
Knights Landing.....	21
Madison	23
Monument Hill – Wild Wings	25
Rumsey	27
Yolo	29
Zamora.....	31

Unincorporated Yolo County

GENERAL INFORMATION

Overview

Yolo County consists not only of incorporated municipalities, tribal lands, and state-controlled university properties, but is also made up of numerous unincorporated communities that are scattered throughout the county. These unincorporated communities have small populations, limited urban features, and a determined rural atmosphere.

All primary governance activities for unincorporated communities rest with the Yolo County Board of Supervisors. The Board is responsible for enacting laws, providing basic public services, managing area growth, and serving as the local governance body for the population outside of the cities or tribal lands.

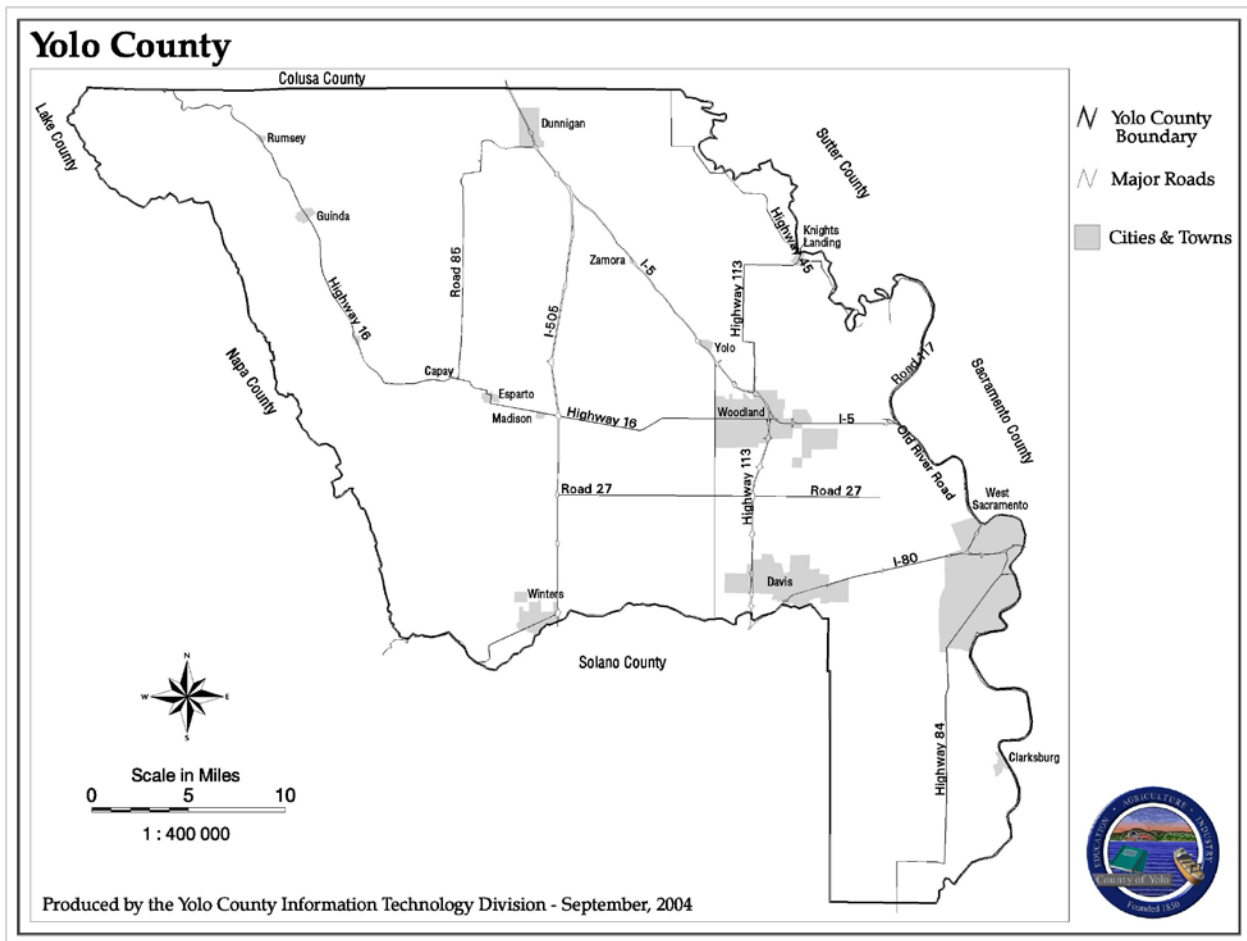
The named unincorporated communities identified within this plan possess certain identifiable qualities that distinguish them from open, de-centralized residential, commercial, and agricultural-based settlements that are spread throughout the county. These qualities include:

- The individual community is recognized within the County General Plan
- The community has an identified population and defined geographical limits for planning
- County managed Community Service Areas (CSA) may provide basic community services (i.e. maintenance,
- They have a definite location name that is known and accepted within the county

Outside of the established unincorporated communities are vast open areas, some of which are populated by small settlements, individual residential dwellings, agricultural processing facilities, and stand-alone commercial establishments. These isolated areas of population may receive services from the more centralized unincorporated communities or adjacent cities, or may have formed local cooperatives to meet basic needs.

For the purposes of this document, the focus will be on named and established core unincorporated communities as identification of the more numerous isolated settlements and individual sites are beyond the scope of the project, and will not have a significant impact of local hazard mitigation planning activities.

Figure – 1: Map of Yolo County, California



UNINCORPORATED PLANNING AREAS

Brooks

Overview

Brooks is a small unincorporated community located in the Capay Valley of Yolo County. The surrounding area is rural, with most of the population decentralized among farms and small residential settlements. Brooks is bordered by the Yocha Dehe Wintun Nation.

Geophysical				
Coordinates	Elevation	Natural Features	Climate	Zip/Area Codes
38.742 - 122.148	341 ft	Plains/Hills	Capay Valley	95607/530

Demographics				
Census Class	Population	Median Age	Median Income	
	54			

Government Services				
Planning Area	Supervisory Dist	School District	Service Districts	
	5	Esparto		

Infrastructure – Utility				
Electricity	Water	Natural Gas	Wastewater/Sewer	Solid Waste
PG&E		PG&E		

Infrastructure – Communication				
Telephone	Cable TV	Television	Radio	
AT&T		Regional	Regional	

Infrastructure – Transportation				
State Hwy	County Roads	Rail	Airport	Marine
SR16	Local Only	None	None	None

Pubic Safety			
Law Enforcement	Fire & Rescue	EMS/Ambulance	Hospital
Sheriff/CHP	Capay Valley FPD	CVFD/AMR	None

Community Services			
Library	Community Center	Post Office	Parks
County/Esparto	None	Brooks	

(Figure 2: Aerial Photo of Brooks, CA)



Capay

Overview

Capay is an unincorporated community located northwest of Esparto, at the beginning of the Capay Valley. The community has a mixed central business and residential district along SR 16, and additional residential neighborhoods and farm establishments within the surrounding area.

Geophysical				
Coordinates	Elevation	Natural Features	Climate	Zip/Area Codes
(38.688) (-122.139)	210 ft	Plains/Hills	Capay Valley	95607/530

Demographics				
Census Class	Population	Median Age	Median Income	
	133			

Government Services				
Planning Area	Supervisory Dist	School District	Service District	
	5	Esparto		

Infrastructure – Utility				
Electricity	Water	Natural Gas	Wastewater/Sewer	Solid Waste
PG&E		PG&E		

Infrastructure – Communication				
Telephone	Cable TV	Television	Radio	
AT&T		Regional	Regional	

Infrastructure – Transportation				
State Hwy	County Roads	Rail	Airport	Marine
SR16	Local Only	None	None	None

Pubic Safety			
Law Enforcement	Fire & Rescue	EMS/Ambulance	Hospital
Sheriff/CHP	Esparto FPD	CVFD/AMR	

Community Services			
Library	Community Center	Post Office	Parks
County/Esparto	None		

(Figure 3: Aerial Photo of Capay, CA)



Clarksburg

Overview

Clarksburg is an unincorporated community located in the extreme southeast portion of Yolo County. Clarksburg has a small community center, with a mixture of several businesses and a selection of residential neighborhoods. The community borders the Sacramento River, and is a service area for surrounding farms and agricultural processing activities.

Geophysical				
Coordinates	Elevation	Natural Features	Climate	Zip/Area Codes
(38.42) (-121.527)	10 ft		Valley	95612/916

Demographics				
Census Class	Population	Median Age	Median Income	
	418			

Government Services				
Planning Area	Supervisory Dist	School District	Service Districts	
	1	River-Delta	Lighting Dist	

Infrastructure – Utility				
Electricity	Water	Natural Gas	Wastewater/Sewer	Solid Waste
PG&E		PG&E		

Infrastructure – Communication				
Telephone	Cable TV	Television	Radio	
AT&T		Regional	Regional	

Infrastructure – Transportation				
State Hwy	County Roads	Rail	Airport	Marine
SR-84	E9		None	Boat Launch

Public Safety				
Law Enforcement	Fire & Rescue	EMS/Ambulance	Hospital	
Sheriff/CHP	Clarksburg FPD	CFD/AMR	None	

Community Services				
Library	Community Center	Post Office	Parks	

(Figure 4: Aerial Photo of Clarksburg, CA)



Dunnigan

Overview

Dunnigan is located in the extreme north central portion of Yolo County, off of Interstate 5. The community consists of residential neighborhoods, several small businesses, light manufacturing, and agricultural processing operations.

Geophysical				
Coordinates	Elevation	Natural Features	Climate	Zip/Area Codes
(38.888) (-121.99)	69 ft	Plain/Hills	Valley	95937/530

Demographics				
Census Class	Population	Median Age	Median Income	
U5	1,416			

Government Services				
Planning Area	Supervisory Dist	School District	Service Districts	
	5	Pierce	Dunnigan CSA	

Infrastructure – Utility				
Electricity	Water	Natural Gas	Wastewater/Sewer	Solid Waste
PG&E	Water District	PG&E		

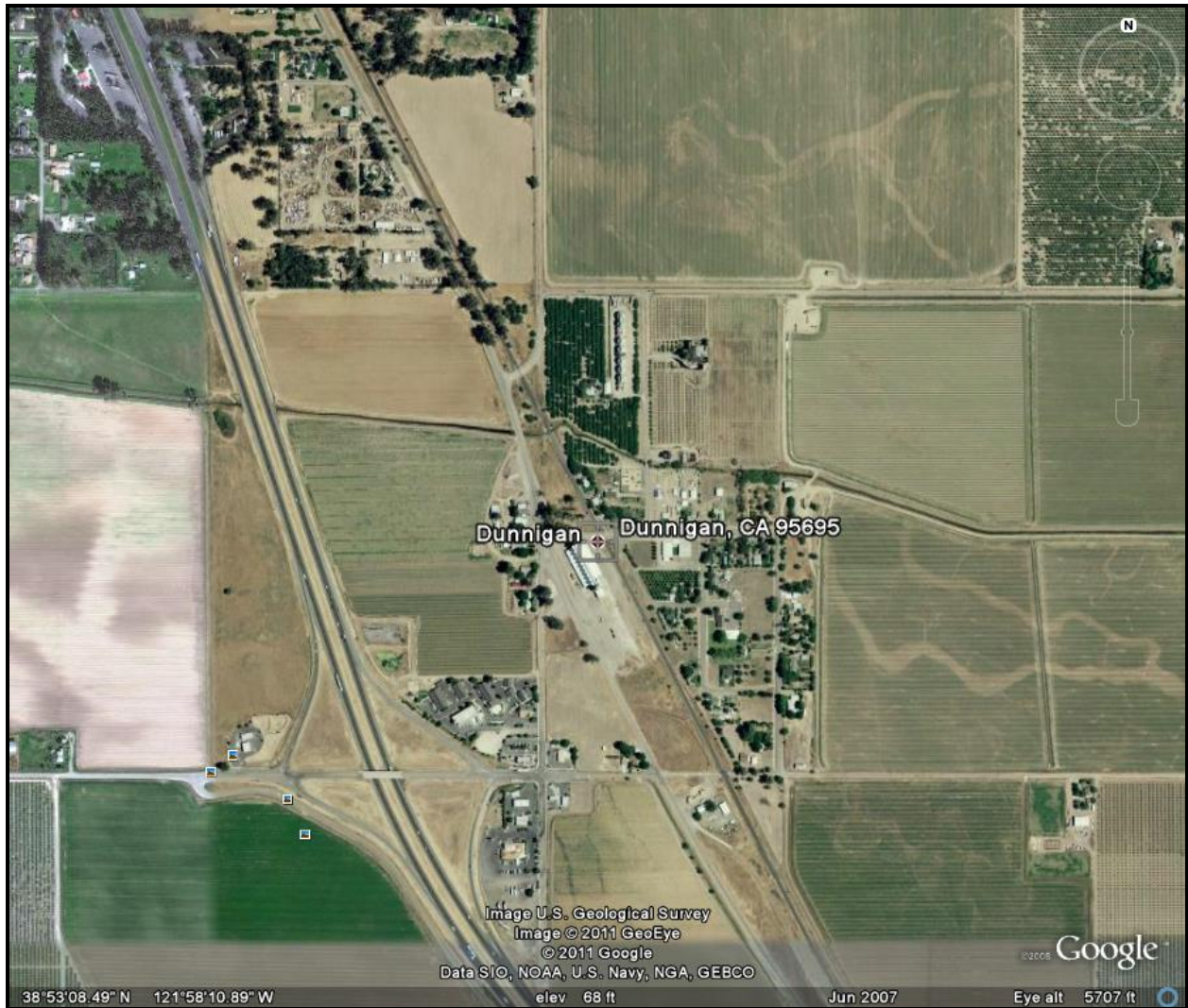
Infrastructure – Communication				
Telephone	Cable TV	Television	Radio	
AT&T		Regional	Regional	

Infrastructure – Transportation				
State Hwy	County Roads	Rail	Airport	Marine
I-5			None	None

Public Safety				
Law Enforcement	Fire & Rescue	EMS/Ambulance	Hospital	
Sheriff/CHP	Dunnigan FPD	Dunnigan FD/AMR	None	

Community Services				
Library	Community Center	Post Office	Parks	

(Figure 5: Aerial Photo of Dunnigan, CA)



Elkhorn

Overview

Elkhorn is a decentralized unincorporated community located to the extreme east of Woodland, bordering the Sacramento River, and running between Interstate 5 and West Sacramento. The community is predominantly agricultural, with residential areas spread out along the CR 22 corridor.

Geophysical				
Coordinates	Elevation	Natural Features	Climate	Zip/Area Codes
38.672 – 122.628	25 ft	Plain	Valley	95691/916

Demographics				
Census Class	Population	Median Age	Median Income	
	Decentralized			

Government Services				
Planning Area	Supervisory Dist	School District	Service Districts	
	3	Woodland		

Infrastructure – Utility				
Electricity	Water	Natural Gas	Wastewater/Sewer	Solid Waste
PG&E		PG&E		

Infrastructure – Communication				
Telephone	Cable TV	Television	Radio	
AT&T		Regional	Regional	

Infrastructure – Transportation				
State Hwy	County Roads	Rail	Airport	Marine
I-5	CR22		None	Boat Launch

Public Safety				
Law Enforcement	Fire & Rescue	EMS/Ambulance	Hospital	
Sheriff/CHP	Elkhorn FPD	Elkhorn FD/AMR	None	

Community Services				
Library	Community Center	Post Office	Parks	
None	None	None		

(Figure 6: Aerial Photo of Elkhorn, CA)



El Macero

Overview

El Macero is an unincorporated community located adjacent to and east of the City of Davis. It is predominantly a residential community, intermixed with a golf course and other recreational amenities. There are additional small unincorporated neighborhoods and residential developments in the unincorporated area east of Davis and in proximity to El Macero.

Geophysical				
Coordinates	Elevation	Natural Features	Climate	Zip/Area Codes
(38.544) (-121.684)	33 ft	Plain	Valley	95618/530

Demographics				
Census Class	Population	Median Age	Median Income	

Government Services				
Planning Area	Supervisory Dist	School District	Service Districts	
	4	Davis	El Macero CSA	

Infrastructure – Utility				
Electricity	Water	Natural Gas	Wastewater/Sewer	Solid Waste
PG&E	CSA	PG&E		

Infrastructure – Communication				
Telephone	Cable TV	Television	Radio	
AT&T		Regional	Regional	

Infrastructure – Transportation				
State Hwy	County Roads	Rail	Airport	Marine
I-80	E6		None	None

Public Safety				
Law Enforcement	Fire & Rescue	EMS/Ambulance	Hospital	
Sheriff/CHP	Davis FD	Davis FD/AMR	None	

Community Services				
Library	Community Center	Post Office	Parks	
Co/Davis	None	Davis		

(Figure 7: Aerial Photo of El Macero, CA)



Esparto

Overview

Esparto is an unincorporated community at the mouth of the Capay Valley, in western Yolo County. Esparto is a service community, consisting of small businesses, light manufacturing, service industry, and residential neighborhoods. Esparto services surrounding agricultural areas and surrounding residential neighborhoods.

Geophysical				
Coordinates	Elevation	Natural Features	Climate	Zip/Area Codes
(38.692) (-122.017)	190 ft	Plain/Hills	Valley	95627/530

Demographics				
Census Class	Population	Median Age	Median Income	
U5	3,108			

Government Services				
Planning Area	Supervisory Dist	School District	Service Districts	
	5	Esparto	Esparto CSD	

Infrastructure – Utility				
Electricity	Water	Natural Gas	Wastewater/Sewer	Solid Waste
PG&E	Esparto CSD	PG&E		

Infrastructure – Communication				
Telephone	Cable TV	Television	Radio	
AT&T		Regional	Regional	

Infrastructure – Transportation				
State Hwy	County Roads	Rail	Airport	Marine
SR16	CR87	None	None	None

Public Safety			
Law Enforcement	Fire & Rescue	EMS/Ambulance	Hospital
Sheriff/CHP	Esparto FPD	Esparto FD/AMR	None

Community Services			
Library	Community Center	Post Office	Parks
County	Esparto	Esparto	

(Figure 8: Aerial Photo of Esparto, CA)



Guinda

Overview

Guinda is a small unincorporated community, located on State Route 16, in the Capay Valley. Guinda consists of a small central core, consisting of several businesses, and residential neighborhoods. The surrounding area is predominantly agricultural with additional residential neighborhoods located off local county roads.

Geophysical				
Coordinates	Elevation	Natural Features	Climate	Zip/Area Codes
(38.829) (-122.194)	361 ft	Hills	Capay Valley	95607/530

Demographics				
Census Class	Population	Median Age	Median Income	
U5	254			

Government Services				
Planning Area	Supervisory Dist	School District	Service Districts	
	5	Esparto		

Infrastructure – Utility				
Electricity	Water	Natural Gas	Wastewater/Sewer	Solid Waste
PG&E		PG&E		

Infrastructure – Communication				
Telephone	Cable TV	Television	Radio	
AT&T		Regional	Regional	

Infrastructure – Transportation				
State Hwy	County Roads	Rail	Airport	Marine
SR16	Local Only	None	None	None

Public Safety			
Law Enforcement	Fire & Rescue	EMS/Ambulance	Hospital
Sheriff/CHP	Capay Valley FPD	CVFD/AMR	None

Community Services			
Library	Community Center	Post Office	Parks
County/Esparto		Guinda	

(Figure 9: Aerial Photo of Guinda, CA)



Knights Landing

Overview

Located in northeast Yolo County, along the Sacramento River, Knights Landing is an unincorporated community that provides limited services to the community and surrounding agricultural areas. The community has a small and developed central core, consisting of several small businesses, service organizations, light manufacturing, and residential neighborhoods.

Geophysical				
Coordinates	Elevation	Natural Features	Climate	Zip/Area Codes
(38.8) (-121.718)	36 ft	Plains/Hills	Sacramento Vly	95645/530

Demographics				
Census Class	Population	Median Age	Median Income	
U5	995			

Government Services				
Planning Area	Supervisory Dist	School District	Service Districts	
	5	Woodland		

Infrastructure – Utility				
Electricity	Water	Natural Gas	Wastewater/Sewer	Solid Waste
PG&E		PG&E		

Infrastructure – Communication				
Telephone	Cable TV	Television	Radio	
Verizon		Regional	Regional	

Infrastructure – Transportation				
State Hwy	County Roads	Rail	Airport	Marine
SR-45 & 113	E10	None	None	Boat Launch

Public Safety				
Law Enforcement	Fire & Rescue	EMS/Ambulance	Hospital	
Sheriff/CHP	Knights Landing FPD	KLFD/AMR	None	

Community Services				
Library	Community Center	Post Office	Parks	
County	Knights Landing			

(Figure 10: Aerial Photo of Knights Landing, CA)



Madison

Overview

The unincorporated community of Madison is located off State Route 16, near to Interstate 505, and west of Woodland. The community consists of a mixture of small businesses, service establishments, light manufacturing, and residential neighborhoods. The surrounding area is predominantly agricultural, and Madison provides limited services to associated farms, migrant work center, and residential settlements in the area.

Geophysical				
Coordinates	Elevation	Natural Features	Climate	Zip/Area Codes
(38.679) (-121.968)	151 ft			95653/530

Demographics				
Census Class	Population	Median Age	Median Income	
U5	418			

Government Services				
Planning Area	Supervisory Dist	School District	Service Districts	
	5	Esparto	Madison CSD	

Infrastructure – Utility				
Electricity	Water	Natural Gas	Wastewater/Sewer	Solid Waste
PG&E		PG&E		

Infrastructure – Communication				
Telephone	Cable TV	Television	Radio	
AT&T		Regional	Regional	

Infrastructure – Transportation				
State Hwy	County Roads	Rail	Airport	Marine
I505 & SR16	CR89	None	None	None

Public Safety				
Law Enforcement	Fire & Rescue	EMS/Ambulance	Hospital	
Sheriff/CHP	Madison FPD	Madison FD/AMR	None	

Community Services				
Library	Community Center	Post Office	Parks	
County/Esparto		Esparto		

(Figure 11: Aerial Photo of Madison, CA)



Monument Hill – Wild Wings

Overview

For the purposes of this plan, Monument Hill consists of unincorporated communities west of Woodland, along SR 16, and includes the Wild Wings subdivision, Watts-Woodland general aviation airport, and selected outlying residential neighborhoods. With the exception of Wild Wings and the airport, the majority of the area is agriculturally centered.

Geophysical				
Coordinates	Elevation	Natural Features	Climate	Zip/Area Codes
38.669 – 121.870	120 ft	Plain/Hills	Sacramento Vly	95695/530

Demographics				
Census Class	Population	Median Age	Median Income	
	1,542			

Government Services				
Planning Area	Supervisory Dist	School District	Service Districts	
	5	Woodland		

Infrastructure – Utility				
Electricity	Water	Natural Gas	Wastewater/Sewer	Solid Waste
PG&E		PG&E		

Infrastructure – Communication				
Telephone	Cable TV	Television	Radio	
AT&T		Regional	Regional	

Infrastructure – Transportation				
State Hwy	County Roads	Rail	Airport	Marine
SR16	CR 94B	None	Woodland-Watt	None

Public Safety				
Law Enforcement	Fire & Rescue	EMS/Ambulance	Hospital	
Sheriff/CHP	Willow Oak PFD	WOFD/AMR	None	

Community Services				
Library	Community Center	Post Office	Parks	
None	Clubhouse	Woodland		

(Figure 12: Aerial Photo of Monument Hill/Wild Wings – Yolo County, CA)



Rumsey

Overview

Rumsey is a small unincorporated settlement located in the far northwestern corner of Yolo County, on SR 16. Rumsey consists of a handful of residences, area farms, and other small concerns.

Geophysical				
Coordinates	Elevation	Natural Features	Climate	Zip/Area Codes
38.888 -122.237	420 ft	Hills	Capay Valley	95607/530

Demographics				
Census Class	Population	Median Age	Median Income	
	54			

Government Services				
Planning Area	Supervisory Dist	School District	Service Districts	
	5	Esparto		

Infrastructure – Utility				
Electricity	Water	Natural Gas	Wastewater/Sewer	Solid Waste
PG&E		PG&E		

Infrastructure – Communication				
Telephone	Cable TV	Television	Radio	
AT&T		Regional	Regional	

Infrastructure – Transportation				
State Hwy	County Roads	Rail	Airport	Marine
SR16	CR41	None	None	None

Pubic Safety			
Law Enforcement	Fire & Rescue	EMS/Ambulance	Hospital
Sheriff/CHP	Capay Valley FPD	CPFD/AMR	None

Community Services			
Library	Community Center	Post Office	Parks
County/Esparto		Guinda	

(Figure 13: Aerial Photo of Rumsey, CA)



Yolo

Overview

Yolo is an unincorporated community centered in a predominantly agricultural region of Yolo County, just north of Woodland. The community consists of a mix of small businesses, local services, light manufacturing and agricultural processing, and residential neighborhoods.

Geophysical				
Coordinates	Elevation	Natural Features	Climate	Zip/Area Codes
38.732 - 121.808	82 ft	Level plain	Sacramento Vly	95695/530

Demographics				
Census Class	Population	Median Age	Median Income	
U5	450			

Government Services				
Planning Area	Supervisory Dist	School District	Service Districts	
	5	Woodland		

Infrastructure – Utility				
Electricity	Water	Natural Gas	Wastewater/Sewer	Solid Waste
PG&E	Yolo-Zamora	PG&E		

Infrastructure – Communication				
Telephone	Cable TV	Television	Radio	
AT&T		Regional	Regional	

Infrastructure – Transportation				
State Hwy	County Roads	Rail	Airport	Marine
I-5	CR17		None	None

Pubic Safety				
Law Enforcement	Fire & Rescue	EMS/Ambulance	Hospital	
Sheriff/CHP	Yolo FPD	Yolo FD/AMR	None	

Community Services				
Library	Community Center	Post Office	Parks	

(Figure 14: Aerial Photo of Yolo, CA)



Zamora

Overview

The unincorporated community of Zamora is located in north central Yolo County, off of Interstate 5. The community has a small central core consisting of light manufacturing, residential dwellings, and community services. The immediate area contains an assortment of small businesses, light manufacturing and agricultural processing, along with established farming and isolated residential dwellings.

Geophysical				
Coordinates	Elevation	Natural Features	Climate	Zip/Area Codes
38.797 - 121.882	52 ft	Level plain	Sacramento Vly	95698/530

Demographics				
Census Class	Population	Median Age	Median Income	
	71			

Government Services				
Planning Area	Supervisory Dist	School District	Service Districts	
	5	Woodland		

Infrastructure – Utility				
Electricity	Water	Natural Gas	Wastewater/Sewer	Solid Waste
PG&E	Yolo-Zamora	PG&E		

Infrastructure – Communication				
Telephone	Cable TV	Television	Radio	
AT&T		Regional	Regional	

Infrastructure – Transportation				
State Hwy	County Roads	Rail	Airport	Marine
I-5	CR13		None	None

Pubic Safety				
Law Enforcement	Fire & Rescue	EMS/Ambulance	Hospital	
Sheriff/CHP	Zamora FPD	ZFD/AMR	None	

Community Services				
Library	Community Center	Post Office	Parks	

(Figure 15: Aerial Photo of Zamora, CA)

