



# YOLO COUNTY: MHSA THREE-YEAR PROGRAM AND EXPENDITURE PLAN 2014 – 2017 LOCAL MENTAL HEALTH BOARD

January 27, 2014

Resource Development Associates

Roberta Chambers, PsyD



## Agenda

2

- Welcome and Introductions
- Overview of MHSA and Community Planning Process
- Review Needs Assessment findings
- Overview of Proposed Programs
- Public Comment



## MHSA Overview

3

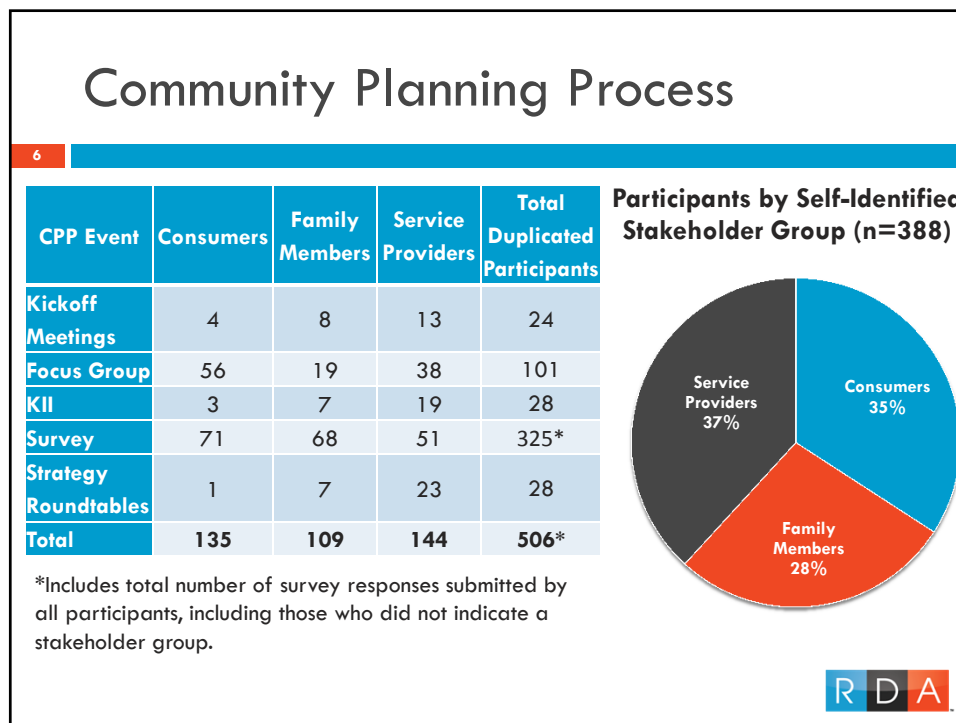
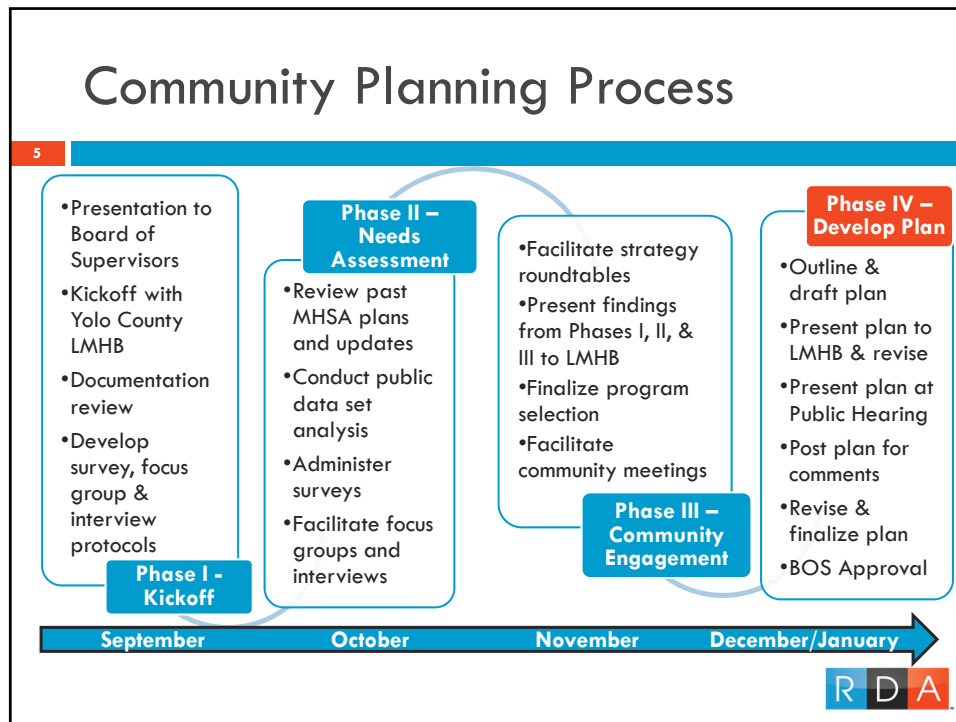
- Mental Health Services Act (Proposition 63) passed November 2, 2004
- 1% income tax on income over \$1 million
- Purpose of MHSA: to expand and transform mental health services in California



## MHSA Values

4







## NEEDS ASSESSMENT FINDINGS



### Needs Assessment Process

8

#### Interviews

- 31 stakeholders from county and community-based agencies

#### Focus Groups

- ADMH staff
- Community-based providers
- Rural residents (Esparto, Winters)
- TAY
- Adults (West Sacramento; Wellness Center; Homeless)
- Older Adults

#### Survey

- Online and paper survey
- 325 received
  - 21% family members
  - 22% consumers
  - 16% providers



# Needs Assessment Findings

9

Mental health service needs	Underserved populations	Barriers to access	Workforce shortages
<ul style="list-style-type: none"><li>• Case management</li><li>• Psychiatry</li><li>• Meaningful daily activities</li><li>• Greater continuity in crisis services</li><li>• Greater awareness about services and mental health issues</li></ul>	<ul style="list-style-type: none"><li>• West Sacramento</li><li>• Rural areas</li><li>• Homeless</li><li>• Dual diagnosis</li><li>• Criminal justice-involved</li><li>• People experiencing crisis</li><li>• School-age youth</li><li>• TAY</li><li>• Seniors</li><li>• Latino/Hispanic</li></ul>	<ul style="list-style-type: none"><li>• Barriers to orientation and appointments</li><li>• Transportation and limited services outside Woodland</li></ul>	<ul style="list-style-type: none"><li>• Psychiatrists</li><li>• Case Managers</li><li>• Counselors</li><li>• Bilingual/Bicultural staff</li><li>• Consumers &amp; Family Members</li><li>• After-hours staff</li></ul>

\* See handout for more detailed findings from the Needs Assessment



## PROPOSED MHSA PROGRAMS



## Proposed Programs

11

### Community Services & Supports (CSS)

Programs	Services for CSS Programs
<ul style="list-style-type: none"> <li>• Children’s Mental Health Services</li> <li>• Pathways to Independence</li> <li>• Wellness Alternatives for Adult Consumers                             <ul style="list-style-type: none"> <li>• ACT</li> <li>• AOT/Laura’s Law</li> </ul> </li> <li>• Older Adult Outreach and Assessment</li> <li>• Access to Care for Homeless and the Indigent Program</li> <li>• Co-Occurring Disorders Harm Reduction Services</li> </ul>	<ul style="list-style-type: none"> <li>• Family Partners/System Navigators or Outreach Specialists</li> <li>• Adult and TAY Wellness Centers</li> <li>• Mobile Services Unit</li> <li>• Telepsychiatry</li> <li>• Benefits Specialist</li> </ul>



## Proposed Programs

12

### Prevention & Early Intervention (PEI)

Prevention Programs	Early Intervention Programs
<ul style="list-style-type: none"> <li>• Yolo Wellness Project                             <ul style="list-style-type: none"> <li>• Urban Children’s Resiliency</li> <li>• Rural Children’s Resiliency</li> </ul> </li> <li>• Senior Peer Counselor Volunteers</li> </ul>	<ul style="list-style-type: none"> <li>• Early Signs Training Project                             <ul style="list-style-type: none"> <li>• ASIST</li> <li>• Safe TALK</li> <li>• Mental Health First Aid and Youth Mental Health First Aid</li> </ul> </li> <li>• Crisis Intervention Team (CIT) Training</li> </ul>



## Proposed Programs

13

### Innovation (INN)

#### Programs

Local Innovation Fast Track (LIFT) Program

### Workforce Education & Training (WET)

#### Programs

Intern Therapy Program for Older Adults

Psychiatry Residency Program Development

Student Loan Repayment & Tuition Reimbursement

Mental Health Professional Development



## Proposed Programs

14

### Capital Facilities & Technological Needs (CFTN)

#### Capital Facilities

- Upgrades to Woodland Wellness Center
- Other CSS and PEI Capital Facilities needs
- Develop Capital Facilities Plan

#### Technological Needs

Yolo Technological Improvement Plan

- Phase I – Upgrades to EHR system and Telepsychiatry
- Phase II – Procure computing equipment





## HOW DOES THIS PLAN MEET THE COMMUNITY'S UNMET NEEDS?



Identified Mental Health Service Need	Proposed MHSa Program/Service	
Expansion of case management services, psychiatry services, and meaningful daily activities	<ul style="list-style-type: none"> <li>✓ CSS FSP programs</li> <li>✓ ACHIP and CODHR</li> <li>✓ Mobile Services</li> </ul>	<ul style="list-style-type: none"> <li>✓ Telepsychiatry</li> <li>✓ Family Partners, and System Navigators/ Outreach Specialists</li> </ul>
Access to MH services for underserved populations: homeless, Russian & Eastern European, rural, youth, seniors, Latino/Hispanic, and people with co-occurring disorders	<ul style="list-style-type: none"> <li>✓ ACHIP and CODHR</li> <li>✓ Mobile Services</li> <li>✓ Intern Therapy for Older Adults</li> </ul>	<ul style="list-style-type: none"> <li>✓ Senior Peer Counselor Volunteers</li> </ul>
Services outside of Woodland, shorter intervals between appointments, and greater continuity of eligibility services	<ul style="list-style-type: none"> <li>✓ Mobile Services</li> <li>✓ Telepsychiatry</li> <li>✓ Benefits Specialist</li> </ul>	
More MH staff: psychiatrists, case managers, counselors, and consumers & family members	<ul style="list-style-type: none"> <li>✓ WET Coordinator</li> <li>✓ Telepsychiatry</li> <li>✓ Psychiatry Residency Internship Development</li> </ul>	<ul style="list-style-type: none"> <li>✓ Intern Therapists</li> <li>✓ Family Partners, and System Navigators/ Outreach Specialists</li> </ul>
Training: customer service, specialty clinical training, and MH education in the community	<ul style="list-style-type: none"> <li>✓ MH Professional Development</li> <li>✓ MH Resources , CIT, and Early Signs (PEI)</li> </ul>	
Wellness center(s) outside of Woodland	<ul style="list-style-type: none"> <li>✓ TAY WC in Davis and Adult WC in West Sac</li> </ul>	





## QUESTIONS & COMMENTS

R D A

16

### Contact Us:

Roberta Chambers, PsyD

[rchambers@resourcedevelopment.net](mailto:rchambers@resourcedevelopment.net)

510.488.4345 x102

Ryan Wythe

[rythe@resourcedevelopment.net](mailto:rythe@resourcedevelopment.net)

510.488.4345 x117

R D A