



This document outlines the planning and organizational responsibilities of the Agriculture and Natural Resources (ESF #11) coordinating agencies for the Yolo Operational Area

Yolo Operational Area Agricultural & Natural Resources Executive Summary

Emergency Support Function
#11 - Annex to local
Emergency Operations Plans

Version 1.0

Revised: February 2015

PARTICIPATING AGENCIES



HANDLING INSTRUCTIONS

1. The title of this document is the *Yolo County Agricultural and Natural Resources (ESF #11) Annex Executive Summary*
2. The information gathered herein is to be used for training and reference purposes within the Yolo Operational Area. Reproduction of this document, in whole or in part, without prior approval from the Yolo County Office of Emergency Services is prohibited.
3. Point of Contact:

Yolo County Office of Emergency Services

DANA M. CAREY

OES Coordinator
625 Court Street, Room 202
Woodland, CA 95695
Office: 530-666-8150
Direct: 530-406-4933
dana.carey@yolocounty.org

This page intentionally blank

CONTENTS

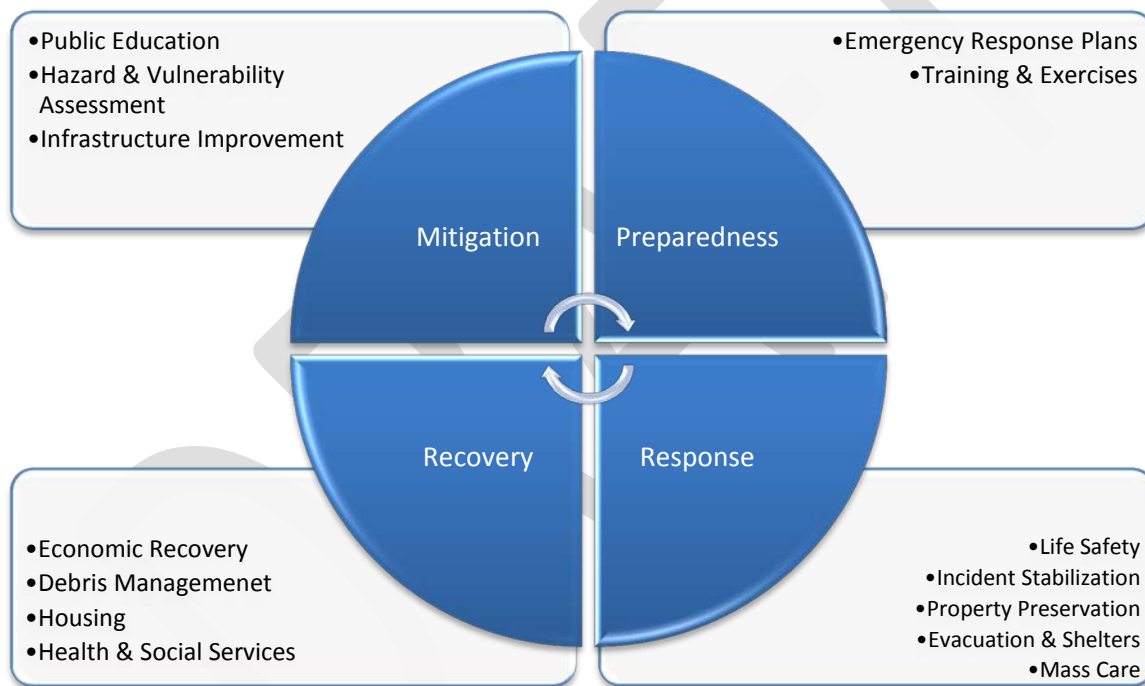
Participating Agencies.....	1
Handling Instructions.....	3
Contents.....	5
Introduction.....	7
Overview.....	7
Purpose.....	8
Scope.....	8
Goals.....	9
Annex Maintenance and Administration.....	9
Stakeholders.....	10
Lead Coordinator.....	10
Supporting Agencies and Departments.....	10
State Agencies.....	12
Federal Agencies.....	12
Concept of Operations.....	13
Mitigation.....	13
Preparedness.....	13
Response.....	14
Recovery.....	15
Appendix A: Yolo Operational Area Planning Groups.....	16
Appendix B: Documentation Maintenance Responsibilities.....	18
Appendix C: Acronyms.....	19
Appendix D: Version History.....	21

This page is intentionally blank

INTRODUCTION

OVERVIEW

The *Yolo County Operational Area Agricultural and Natural Resources (ESF #11)* represents an alliance of discipline-specific stakeholders who possess common interests and share a level of responsibility to provide emergency management related services regarding food and feed safety and agricultural diseases and pests. In addition, ESF #11 supports the management of other types of emergencies by providing: authorities, expertise and resources relating to biological inspections, investigations and regulatory actions; laboratory services; and animal care in the Yolo Operational Area. The function #11 stakeholders will work together within their statutory and regulatory authorities to effectively and efficiently coordinate during all four phases of emergency management.



The Yolo County Ag Protection planning group¹ supports and coordinates the Operational Area’s activities of its stakeholders in the mission to protect Agricultural and Natural Resources from All-Hazards.

The *Yolo County Agriculture and Natural Resources (ESF #11)* is an annex to the County of Yolo Emergency Operations Plan (EOP), City of Davis EOP, City of West Sacramento EOP, City of Winters EOP, City of Woodland EOP, and the Yocha Dehe Wintun Nation EOP. The purpose of the annex is to define the scope of Function #11 and the emergency management activities of its stakeholders. The development of Function #11 will be a continuous process that will take time, resources and consensus

¹ See [Appendix A](#) for an overview of all planning groups within the Yolo Operational Area

building. Plans within the annex will be maintained to reflect inclusion of additional stakeholders, the expansion of resources and capabilities, or the revision of policies and procedures.

An Agricultural and Natural Resources response is complex and involves many jurisdictions and agencies. It can also span several different response plans and traverse jurisdictional boundaries. Multiple plans maintained throughout the County may be used depending on the specific area or species in question.



PURPOSE

The purpose of Function #11 is to organize stakeholders with responsibilities for protecting food, feed, agriculture and animals into a coordinated response. Function #11 addresses emergencies involving food contamination, plant and animal agriculture, endangered species, sacred and/or historical site preservation, and mining operations.

SCOPE

The plans and systems that make-up the Function #11 Annex may be activated in whole or in part as described in the local Emergency Operations Plans and/or in response to a request for support. A Yolo County response to protect Agriculture and Natural Resources may also be carried out under other key response authorities identified in any plan identified in this Executive Summary.

The scope of Function #11 includes the appropriate actions to prepare for and respond to a threat to the environment and/or natural resources caused by an emergency or disaster. For purposes of this Executive Summary, “natural resources” is a general term intended to mean:

- Animal & Plant Disease and Pest Infestation Response
- Food and Feed Safety & Security

- Natural and cultural resources and historic properties protection and restoration

The plans and actions that make up this annex will require coordination among multiple Emergency Support Functions².

GOALS

This section identifies the goals for the Agricultural Protection planning group to support the further development and ongoing maintenance of emergency support function #11 over the coming years.

- Prepare for and prevent, cohesively respond to, and effectively mitigate and recover from the effects of an emergency to the Natural Resources of Yolo County.
- Integrate and standardize function #11 emergency management activities within SEMS/NIMS.
- Proactively develop and support mutual aid and other forms of assistance.
- Implement improvements to the Operational Area's Agriculture and Natural Resources response capabilities.
- Identify, coordinate, and engage the Operational Area's emergency function #11 stakeholders.
- Train and exercise the activities of function #11.
- Provide input and planning assistance for any Hazard specific annexes developed which contain Agricultural and Natural Resource elements.

ANNEX MAINTENANCE AND ADMINISTRATION

Various members are responsible for the on-going maintenance and administration of function #11 plans, Field Operations Guides, Standard Operating Procedures, resource directories, exercises, etc., these are outlined in [Appendix B](#).

² Additional functions are addressed in the ESF-6 Mass Care Executive Summary, ESF-3 Public Works & Engineering Executive Summary, ESF-13 Public Safety and Security Executive Summary, and ESF-15 External Affairs Executive Summary.

STAKEHOLDERS

LEAD COORDINATOR

For the development of the Operational Area level a lead agency has been designated based upon authorities and responsibilities. The lead agency is responsible to facilitate the development, maintenance, and implementation of function #11, with input and assistance from the stakeholders. For the purposes of function #11, the lead agency is the **Yolo County Agricultural Commissioner**.

The Yolo County Agricultural Commissioner is responsible for:

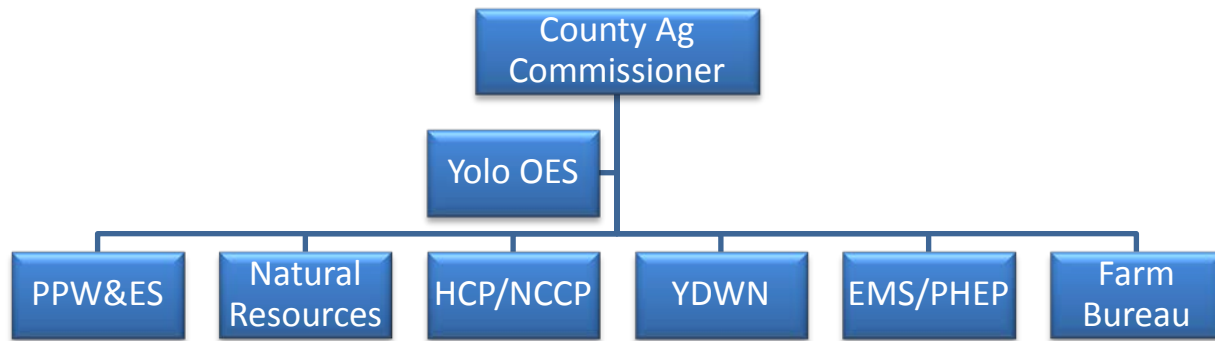
- The management oversight of function #11 including:
 - Identification of subject matter experts
 - Establishing communications and sharing information with function #11 stakeholders
- Contributes authorities, expertise and resources to the function #11 stakeholder response
- Conducts inspections, tests, investigations and related emergency preparedness, response, and mitigation activities and assists with recovery
- Operates laboratories to support inspection and investigations
- Provides the leadership, ongoing communication, coordination, and oversight for the function throughout all phases of emergency management

The Emergency Function Coordinator, designated by the Yolo County Agricultural Commissioner, facilitates consistency among stakeholders and can provide general information regarding the breadth of capabilities among function #11 stakeholders. During an emergency response, the Coordinator can serve as an information “broker” between the stakeholders and the Emergency Operations Center. The Coordinator provides information regarding the capabilities and activities of primary and supporting agencies and helps direct questions and issues to the appropriate agency.

SUPPORTING AGENCIES AND DEPARTMENTS

Other agencies and departments that play roles in both regulatory and response operations assist in the development of function #11. These supporting stakeholders have responsibilities in assisting the coordination of all phases of emergency management. Local, state, and federal laboratory resources provide key support to function #11. The specific responsibilities of supporting agencies may be articulated within the agencies’ administrative orders, agency plans, documents, or Standard Operating Procedures (SOPs).

Department/Agency	Division/Group	Responsibility
Yolo County Agriculture Department	Yolo County Agricultural Commissioner	Enforces agricultural related laws and regulations, which includes pesticide use enforcement, weights and measures
Yolo County Farm Bureau		Protects and promote agricultural interests in Yolo County
Yolo County Administration Office	Operational Area Office of Emergency Services (OES)	Function #11 Executive Summary maintenance & updates. Serves as the primary coordinating agency for Operational Area Emergency Management. Assists in obtaining a Local Emergency Proclamation and request of a Governor’s Proclamation of a State of Emergency, USDA Secretarial Disaster Designation, and SBA and Presidential Disaster Declaration, if deemed appropriate. Assists in obtaining resources from supporting county departments.
Yolo County Planning, Public Works, & Environmental Services (PPW&ES) Department	Consumer Protection Division	Maintains the Food Protection Program. Maintains the Food-borne Illness Plan. Deploys Food Emergency Response Team for environmental investigations of food borne illness outbreaks.
Yolo County Planning, Public Works, & Environmental Services Department	Land & Environmental Protection Division	Maintains the Drinking Water Program, Land Use Program & Waste Monitoring activities. Provides recommendations as to the most appropriate method(s) for disposal of dead, destroyed, and affected animals.
Yolo County Administration Office	Natural Resources Division	Cache Creek Area Plan maintenance & updates. Monitors mining projects and permits.
Yolo Natural Heritage Program	HCP/NCCP Joint Powers Agency	Habitat Conservation Plan and Natural Community Conservation Plan maintenance & updates.
Yocha dehe Wintun Nation (YDWN) Cultural Resources Department	Site Protection Division	Maintains & monitors all information regarding Tribal archaeological and historic resources within the Tribal Historic Resource Center (THRC).
Yocha dehe Wintun Nation (YDWN) Farm & Ranch	Property, Farm & Ranch Committee	Manages the cultivation of more than a dozen crops and 250 head of cattle using sustainable farm and ranching practices
Yolo County Health Services Department	Emergency Medical Services (EMS) and Public Health Emergency Preparedness (PHEP) Division	Serves as the Medical and Health Operational Area Coordinator and has reporting requirements to the California Department of Public Health under Health and Safety Code 1797.153. Determines the public risk and impact, if any, of an animal disease emergency. Provides public information regarding the public health effects of the disease outbreak or control measures and potential preventive strategies.



STATE AGENCIES

The role of the State Agencies will be dependent upon the specific nature of the emergency including the scope of the response and recovery activities, and whether the incident affects the inland or coastal zone, on state streets, highways, or state-owned buildings or grounds. Supporting State Agencies are those who can provide technical, policy, and subject matter expertise, and are generally requested by stakeholder agencies or the Lead Coordinator(s) during an incident. Two State Agencies pre-identified as necessary coordinating agencies include:

University of California, Davis School of Veterinary Medicine

- Makes cooperative extension personnel (livestock specialists and farm advisors) and faculty available to assist with animal disease emergency, food and feed contamination or plant emergency control and eradication.
- Designs and/or conducts field studies during the course of the outbreak that will increase the body of knowledge surrounding the disease or condition.

California Department of Food and Agriculture (CDFA)

- Responsible for the oversight of Function #11 at the State level.

California Department of Fish and Wildlife

- Provides advice on risks to wildlife and methods to respond to and mitigate these risks.
- Supports the law enforcement aspect within the restricted movement areas, if applicable and involving fish, wildlife or habitats.

FEDERAL AGENCIES

The National Response Framework (NRF) organizes federal resources and capabilities under 15 Emergency Support Functions (ESF). ESFs have been developed and organized for the purpose of providing federally controlled resources to state and federal agencies during the response and recovery phases of a disaster or large scale emergency.

CONCEPT OF OPERATIONS

This section describes the function #11 concept of operations, which documents how the emergency function stakeholders will, through collaboration and joint activities, support each phase of emergency management.

MITIGATION

Mitigation is the effort to reduce loss of life and property by lessening the impact of disasters. This is achieved through risk analysis, which results in information that provides a foundation for mitigation activities that reduce risk. Mitigation activities for function #11 include:

- Identify stakeholders and engage them in the development and maintenance of the Yolo Operational Area Multi-jurisdictional Hazard Mitigation Plan.
- Complete a vulnerability assessment and prioritize actions to reduce vulnerabilities within the scope of Yolo Operational Area Multi-jurisdictional Hazard Mitigation Plan.
- Develop strategies and processes to prevent or reduce the impact of events and reduce the need for response activities and include in the 5-year updates/revisions of the Yolo Operational Area Multi-jurisdictional Hazard Mitigation Plan.
- Collaborate to pool EF #11 resources to prevent hazards and reduce vulnerability (leveraging funding, resources and people).
- Coordinate with the Yolo County Office of Emergency Services

PREPAREDNESS

Preparedness is a continuous cycle of planning, organizing, training, equipping, exercising, evaluating and taking corrective action in an effort to ensure effective coordination during incident response. Preparedness Activities for function #11 include:



- Develop and maintain the Yolo County EF #11 Annex, the overall Emergency Operations Plans containing a concept of operations, plans, supporting documents and agreements.
- Identify stakeholder roles, responsibilities and statutory authorities.
- Initiate and oversee pre-emergency planning and coordination activities.
- Conduct resource inventories, categorize resources, establish agreements for acquiring needed resources, manage information systems, and develop processes for mobilizing and demobilizing resources with the EF #11 stakeholders.

- Plan for short-term and long-term emergency management and recovery operations.
- Integrate After Action Reports (AAR) and Corrective Action Planning (CAP) into the function #11 exercise process.
- Conduct regular function #11 meetings and assist with training events.
- Support coordination for incident prioritization, critical resource allocation, integration of communications systems and information coordination.
- Create an Emergency Resource Directory providing the list of function #11 resources necessary to support operations and begin to identify and document resource types.
- Create inventory agreements that are in place to support sharing of resources.
- Assists with the documentation of how function #11 members communicate during an emergency, including primary and secondary systems and system redundancy.

RESPONSE

Response includes activities that address the direct efforts of an incident. Response includes the execution of emergency operations plans and mitigation activities outlined to limit the loss of life, personal injury, property damage and other unfavorable outcomes. Response activities for function #11 include:

- The function #11 coordinator provides subject matter recommendations and guidance involving its members.
- Coordinates assistance from support agencies and provides assistance within other EOC levels (as necessary).
- Provides guidance and recommendations in resource request processing to EOC Sections to ensure the appropriate use of resources.
- Acquires and processes discipline-specific intelligence and information.
- Identifies and documents Trigger Points/Thresholds that may indicate a need to increase the operational mode.
- Documents how stakeholders mobilize resources to support incident response and operations. Also assists with the tracking of resources during mobilization and demobilization.
- Documents how function #11 organizes itself to support the emergency response within the Standardized Emergency Management System (SEMS).
- Participates in Action Planning, section and branch meetings scheduled during the operational period within the EOC.
- Actively coordinates with function #11 stakeholders at other locations on incident response activities, consistent messaging, and technical assistance.

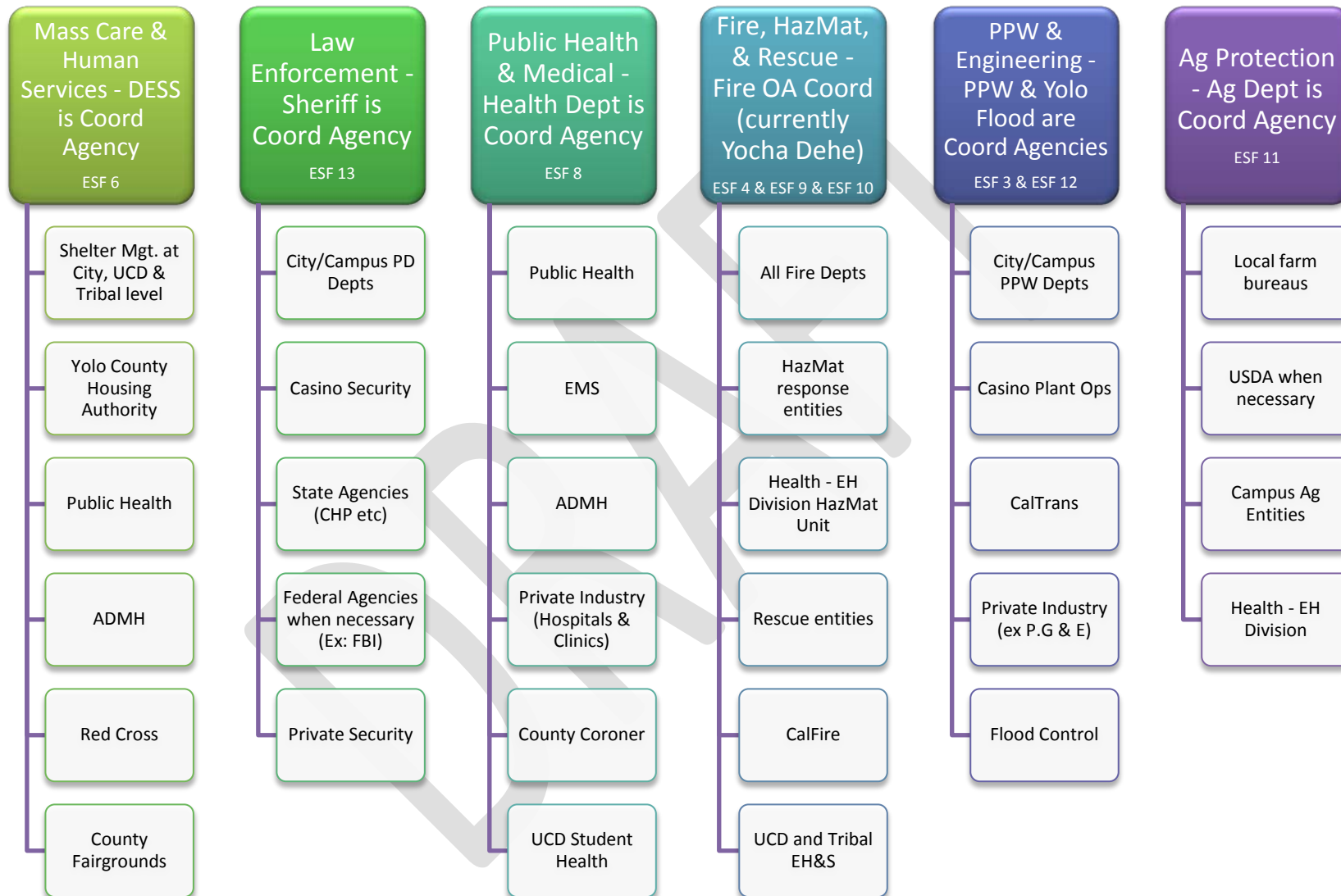
- Acts as a conduit of information from the function #11 stakeholders to the EOC regarding stakeholder's intelligence and resource capabilities.

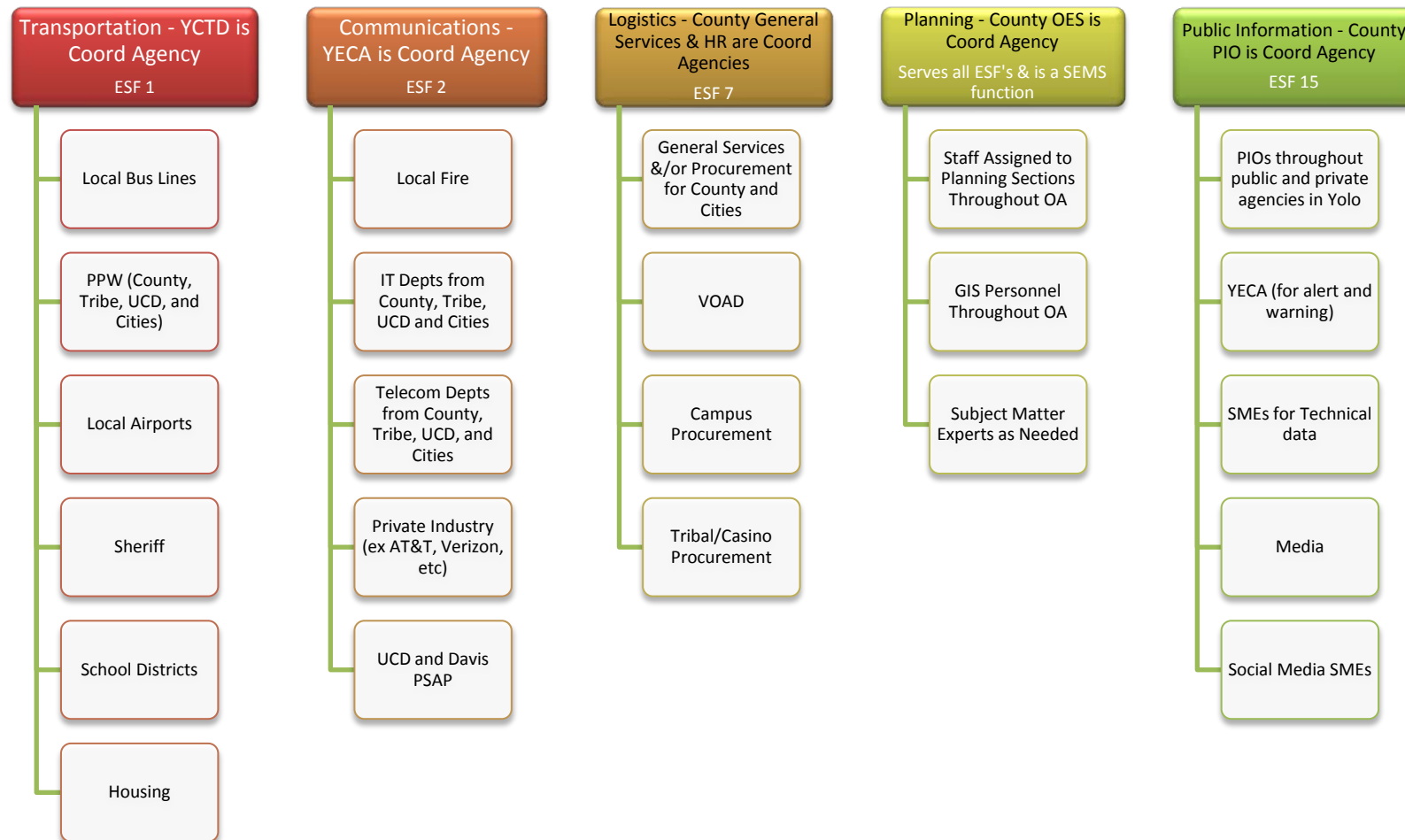
RECOVERY

The aim of the recovery phase is to restore the affected area to its pre-disaster state. It differs from the response phase in its focus; recovery efforts are concerned with issues and decisions that must be made after immediate needs are addressed. Recovery activities for include:

- Supporting recovery activities with roles and responsibilities of Emergency Support Function stakeholders.
- Working with other function #11 stakeholders to prevent duplication of efforts.

APPENDIX A: YOLO OPERATIONAL AREA PLANNING GROUPS





ESF5 is satisfied by OES involvement in all other ESF planning aspects & ESF 14 is satisfied by the recovery planning within each ESF.

APPENDIX B: DOCUMENTATION MAINTENANCE RESPONSIBILITIES

Plan/Document Name	Description	Emergency Management Phases	Owner	Last Updated
<i>Yolo County Operational Area Agricultural & Natural Resources (ESF #11) Annex Executive Summary</i>	Overview of Function #11 for the Yolo Operational Area	Preparedness	Yolo County OES	December 2014
<i>Yolo Cache Creek Area Plan</i>	Emphasizes the management of all of Cache Creek's resources both environmental and social.	Mitigation, Preparedness & Recovery	Yolo County Natural Resources	OCMP-July 1996 CCRMP-August 2002
<i>Tribal Historic Resource Center (THRC)</i>	Database used to maintain and monitor all information regarding Tribal archaeological and historical resources	Mitigation, Preparedness, Response & Recovery	Yocha dehe Wintun Nation	On-going

APPENDIX C: ACRONYMS

AAR – After Action Report

ADMH – Alcohol Drug & Mental Health

Ag – Agricultural

CAP – Corrective Action Plan

CCRMP – Cache Creek Resources Management Plan

CDFA – California Department of Food and Agriculture

DESS – Department of Employment and Social Services

EMS – Emergency Medical Services

EOC – Emergency Operations Center

EOP – Emergency Operations Plan

ESF – Emergency Support Function

HCP/NCCP – Habitat Conservation Plan/Natural Community Conservation Plan

NRF – National Response Framework

NIMS – National Incident Management System

OCMP – Off-Channel Mining Plan

OES – Office of Emergency Services

OA – Operational Area

PHEP – Public Health Emergency Preparedness

PPW&ES – Planning, Public Works & Environmental Services

SEMS – Standardized Emergency Management System

SOP – Standard Operating Procedures

THRC – Tribal Historic Resource Center

UCD – University of California Davis

YDWN – Yocha Dehe Wintun Nation

YECA – Yolo Emergency Communications Agency

APPENDIX D: VERSION HISTORY

(Note: File each revision transmittal letter behind this record page.)

Change Number	Section	Date of Change	Individual Making Change	Description of Change
0.1	All	10/31/2014	Howell Consulting	Initial draft
0.2	All	12/04/2014	Yolo OES	Include edits & comments for revision
1.0	All	02/13/2015	Yolo OES	Inclusion of public comments