

YOLO COUNTY MCAH ADVISORY BOARD

January 14, 2015

MINUTES

The Yolo County MCAH Advisory Board met on the 15th day of January 2015, in the First 5 Yolo building at 403 Court Street, Woodland, CA at 8:30 a.m.

Voting Members Present: Jessica Cerniak, Julie Gallelo, Katy King-Goldberg, John McKean, Kathleen Middings, Jenifer Newell

Voting Members Absent: Dian Baker, Barb Boehler, Stephen Nowicki, Tia Will

Staff & Guests: Jan Babb, Jill Cook, Haydee Dabritz, Gina Daleiden, Jessica Hackwell, Ashley Logins-Miller, Jim Provenza, Zach Romawac, Anna Sutton, Amy Thurman

8:30 A.M. CALL TO ORDER

1. Welcome and roll call.

- The meeting was called to order at 8:35 by Julie Gallelo, at which time around the table introductions were performed.

2. Update from Supervisor Provenza

- Over the last several years, the County has been working on coordinating services across the board. The homeless project is an example of how this has happened. Since services for children are facing loss of funds and increased needs, identifying the gaps in current resources is becoming a priority. Addressing those gaps in a creative way is also being looked at.
- For the MCAH Advisory Board report to the Board of Supervisors in March, Supervisor Provenza would like to see information on current coordination efforts, currently identified gaps, and trauma-informed care.

3. Approval of Minutes and Agenda

- The consideration for approval of the January 14, 2015 agenda. The motion was approved by John McKean, second by Katy King-Goldberg, approved by consensus and the motion carried.
- The consideration for approval of the August 13, 2014, September 10, 2014, and November 12, 2014 minutes. The motion was approved by Katie King-Goldberg, second by John McKean, approved consensus and the motion carried.
- Gina Daleiden reviewed the membership roster. John McKean and Katy King-Goldberg are nearing the end of their terms but both are interested in being reappointed. That leaves three vacancies.

YOLO COUNTY MCAH ADVISORY BOARD

- The membership categories were discussed. The way the resolution is written, there is no specification of how many members are needed in each category. There is defiantly a need for at least one member in each category but the board also needs to represent the entire community.
- The MCAH Advisory Board membership opportunities will be brought up at the next PHN/ School Nursing meeting to solicit additional members from school health.
- While District 4 and other districts are interested in hearing that people are interested in being reappointed, sometimes the demographics and makeup need to change and the Supervisors will want to make changes.
- If members have missed three consecutive meetings, they can be removed from the board.

PUBLIC COMMENT

4. There was no public comment.

REPORTS & ACTION ITEMS

5. **Vote on Letter of Support regarding e-cigarettes, Julie Gallelo**

- The Letter of Support stems from the presentation from Keri Hess in November 2014.
- The Yolo County Tobacco program is working on e-cigarette policy in two communities currently: West Sacramento, and the unincorporated areas of Yolo County. The MCAH Advisory Board has been asked for a letter of support for the actions proposed for the unincorporated areas of Yolo County.
- The motion was approved by Jennifer Newell, second by John McKean, approved by consensus and the motion carried.

6. **Introduction and 2014 Highlights, Julie Gallelo**

Accomplishments include:

- Letter of Support for Water fluoridation for Woodland and Davis.
 - This project is still being worked on; there is an opportunity for a grant.
- Letter of Support for e-cigarettes to be added to the no smoking policies for County buildings.

Presentations received

- Victor Community Support Services
- Kaiser Permanente Early Start Program
- Yolo Children's Movement

7. **MCAH Data, Jan Babb**

The MCAH Data Presentation

YOLO COUNTY MCAH ADVISORY BOARD

- Clarification on slides 26 and 27. Substantiated cases of child abuse and neglect are trending down statewide and Yolo County is staying flat. The Advisory Board would be interested in hearing more information from Alissa Sykes at Child Welfare Services for more details on the data, such as what type of cases (abuse vs. neglect), removals, census tract, etc.

8. FIMR 5 Year Report Highlights, *Anna Sutton*

FIMR 5 Year Report Highlights Presentation

- The entire FIMR 5 Year report will be released to the FIMR team on February 12th, at which time the FIMR team will develop a plan to disseminate the information to others. The Advisory Board would like a presentation on the data once it is available.

9. Perinatal Mental Health Collaborative & Yolo ACES update, *Anna Sutton*

Perinatal Mental Health Collaborative Presentation

Yolo ACES Presentation

- Anna Sutton will send an invitation to Yolo Aces Connection to the MCAH Advisory Board.

10. MCAH Action Plan, *Anna Sutton & Jan Babb*

- The three priorities were identified: Access to mental health services, perinatal mood and anxiety disorders, adolescent sexual health. The Action Plan is due to the State June 30th, 2015.
- Access to mental health services: Jan Babb will be working with internal ADMH staff to focus on this subject. MCAH will not be focused on developing new resources but assuring there is a robust system of care and the community is aware and empowered to use it. It will include bringing mental wellness into the picture of physical wellness
- Perinatal Mood and Anxiety disorders: see Perinatal Mental Health above.
- A more comprehensive report can be scheduled later in the year.

11. Review Policy Platform, *Jan Babb*



2015 MCAH AB
Platform statement.pdf

- Action Item – Please review and discuss at next meeting.

12. Health & Human Services Integration Update, *Jill Cook*



2015-01-14
Attachment E - H&H Ir

YOLO COUNTY MCAH ADVISORY BOARD

- In September 2013, the ADMH Department was consolidated with Public Health under a single Department Head, Jill Cook. Over the past year, integration efforts between those two departments, now known as the Department of Health Services, have occurred and will continue to occur.
- A new Mental Health Director was hired, Karen Larsen.
- The Board of Supervisors has had an interest in creating a Health and Human Services super agency for many years. Several small counties organize their services in this way; as benefits include fiscal flexibility, integrated services, streamline approach to the client. It is a way to look at the whole person who needs services.
- January 2014, the Board of Supervisor directed the two Departments, Health Services and DESS, to develop an integration plan. Health Services has approximately 150 employees and DESS has approximately 350. Between the two departments, that is approximately half of the County's employees.
- One of the first steps was to bring all the managers from both Departments together. A resource guide was developed from that effort.
- With help from a consultant, an integration plan has been developed and will be presented to the Board of Supervisors on February 27, 2015. The integration plan includes input from stakeholders, such as the MCAH Advisory Board. The plan is a three phase plan, and is currently in phase one.
- Phase two generally maintains the current organizational structure. The County is currently recruiting for a Director of the super agency. Once the Director is selected, the other needed management positions will start to be filled. Phase two is targeted to start by July 1, 2015 and will last approximately 24 months.
- Phase three is where you will see the integration of population-based services. It includes many organizational changes in order to promote the integration of services. This is targeted to occur July 1, 2017.
- An integrated budget will be proposed in 2016.

13. First 5 Yolo Strategic Plan Update, *Julie Gallelo*

- The First 5 Commissioners met over two different retreats, at which time four overarching priorities areas were identified: Improve child health, improved child development, improved family function, improved system and network. From there, eight objectives were identified. However, there is not enough funding for all eight objectives.
- The Implementation plan is now being reviewed to determine which of those objectives will be funded and how. The Commissioner's subcommittees will be meeting with staff to determine how best to present the implementation plan components. There are also new commissioners coming on board who will need to be brought up to speed.
- The goal is for the Strategic Plan for the next three years (July 2015 – June 2018) is to be finalized in March.

YOLO COUNTY MCAH ADVISORY BOARD

- A general discussion occurred regarding the declining revenues statewide generated by tobacco tax and potential new sources of revenue.
- Julie Gallelo will provide more information in April.

14. Schedule & Topics for 2015, *Julie Gallelo*

- See attached calendar.



2015 MCAH AB
Calendar.pdf

- Proposing an addition of two meetings: March and April. November's meeting will be shifted due to Veteran's Day.
- The motion was approved by Kathi Middings, second by Katy King-Goldberg, approved by consensus and the motion carried.

ANNOUNCEMENTS

15. No announcements at this time.

ADJOURNMENT

16. Next meeting scheduled for: February 11, 2015

- Agenda Items:
 - Board of Supervisors Presentation Preparation
 - Review Policy Platform

17. Attachments:

Respectfully submitted by:

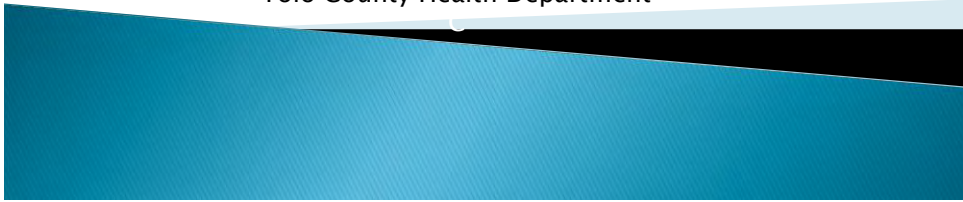
A handwritten signature in blue ink, appearing to read 'Ashley Logins-Miller'.

Ashley Logins-Miller, Secretary
Yolo County MCAH Advisory Board

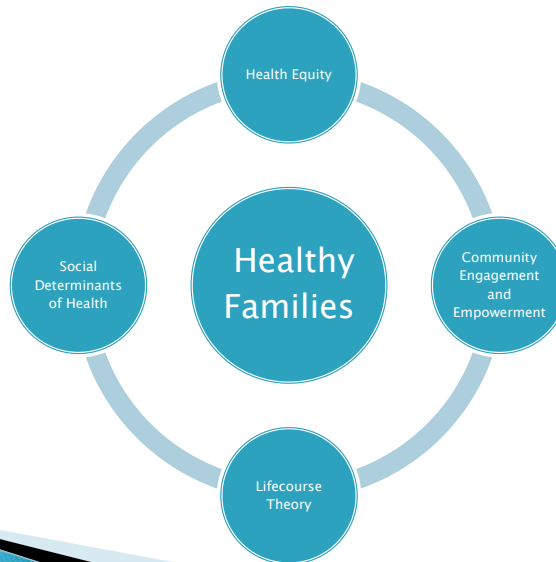
Maternal Child and Adolescent Health Program and Data Update

MCAH Advisory Board Retreat
January 14, 2015

Jan Babb, MSN, RN, PNP
MCAH Director
Yolo County Health Department



Conceptual Framework for MCAH

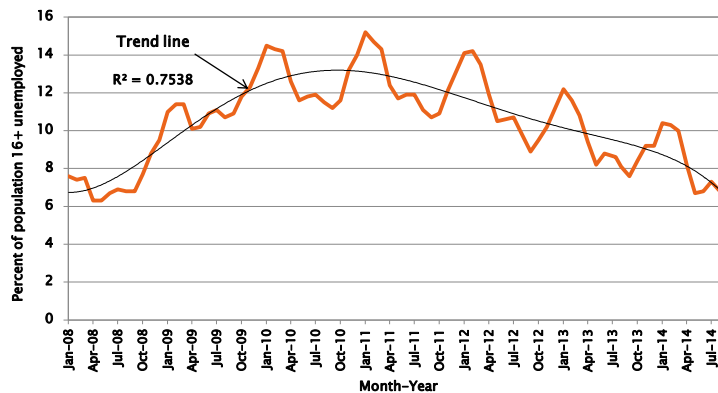


Health Indicators

- ▶ A measure that reflects the state of health in a defined population
- ▶ Health indicators INDICATE larger problems that may require action
- ▶ Standard public health indicators allow:
 - Comparison of health status between populations
 - Quantification of trends and progress toward goals (Healthy People 2020)
- ▶ Health indicators do not explain the cause(s) or the problem(s) they identify.



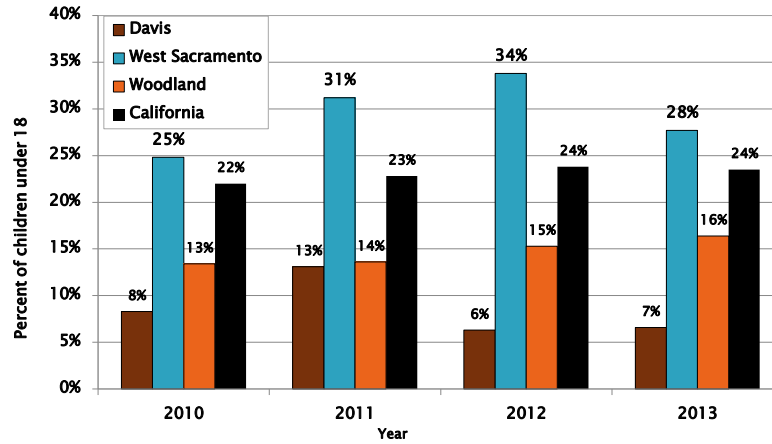
Unemployment Rate, Yolo County, 2008–2014



Source: Bureau of Labor Statistics



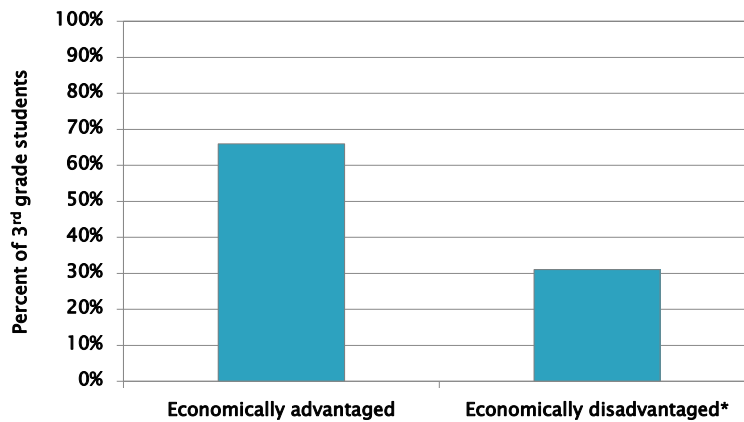
Percent of Yolo County Children in Poverty by City, 2010–2013



Source: American Community Survey

5

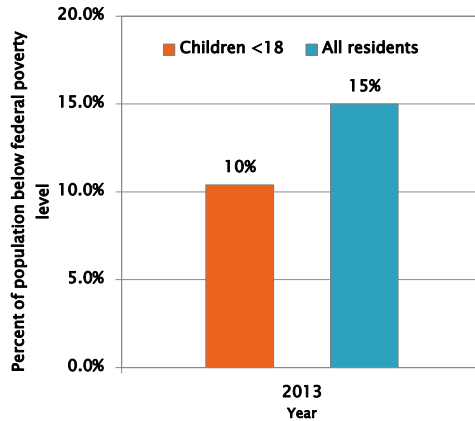
3rd Grade Reading Proficiency By Economic Status– Yolo County, 2013



*Neither of the student's parents has received a high school diploma OR the student is eligible for the free or reduced-price lunch program . Source: <http://www.kidsdata.org>

6

Percent of Yolo County Residents without Health Insurance, 2013



20% of adult residents in the October 2014 healthcare access survey were without health insurance.

Source: American Community Survey, US Census, 1-year estimate, Table DP03.

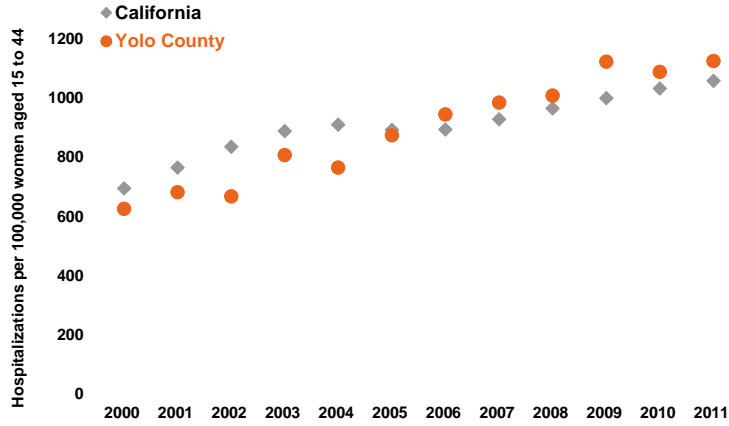
7

Maternal and Women's Health

- » Mood and anxiety disorders
- Substance use
- Domestic violence
- Late prenatal care
- Overweight/obesity
- Diabetes

8

Mood Disorder Hospitalizations, Women Aged 15 to 44, Yolo County vs. California

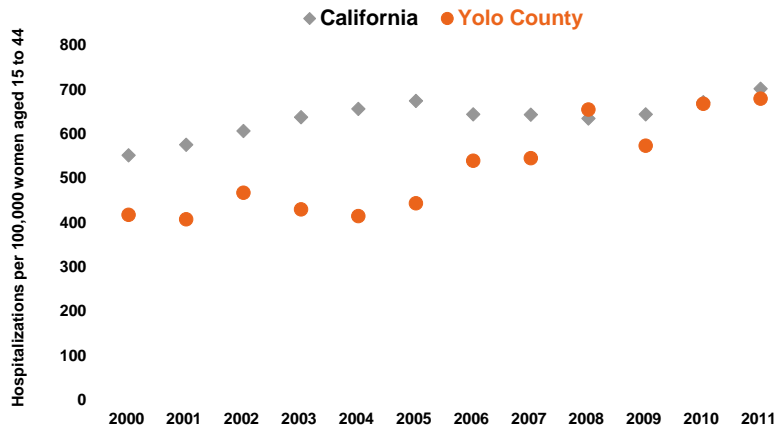


***Yolo County rate significantly higher than the State rate**

Source: Family Health Outcomes Project, UCSF

9

Substance Abuse Hospitalizations, Women Aged 15 to 44, Yolo County vs. California



Source: Family Health Outcomes Project, UCSF

10

Domestic Violence Calls for Assistance: 2008 – 2013

Locations	Rate per 1,000					
	2008	2009	2010	2011	2012	2013
California	6.8	6.7	6.6	6.3	6.2	4.0
Yolo County	5.9	6.6	7.0	6.8	6.9	5.2
Definition: Number of domestic violence calls for assistance per 1,000 adults ages 18-69.						
Data Source: As cited on kidsdata.org						

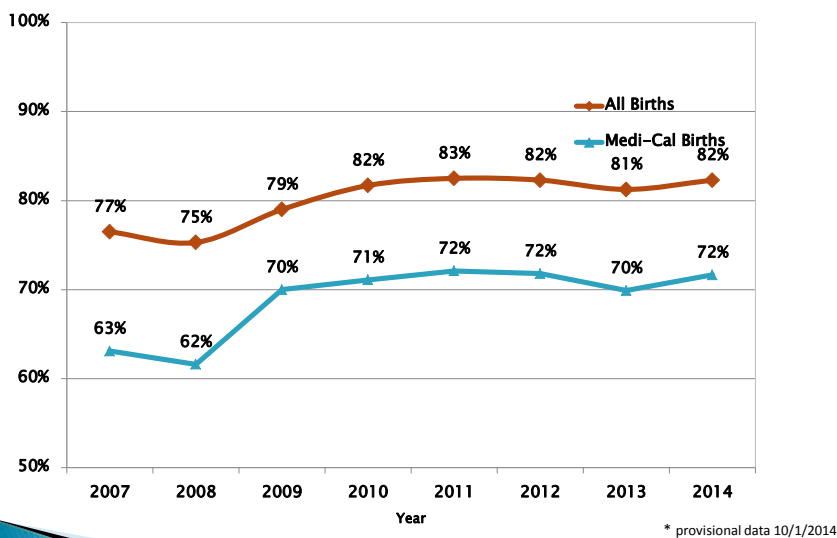
11

Domestic Violence Calls for Assistance, by City: 2008 – 2013

Locations	Year					
	2008	2009	2010	2011	2012	2013
Davis	205	214	198	173	177	185
West Sacramento	244	406	412	410	383	410
Winters	30	33	33	60	40	44
Woodland	250	217	255	246	305	339
Definition: Number of domestic violence calls for assistance from residents of all ages, by city.						
Data Source: As cited on kidsdata.org						

12

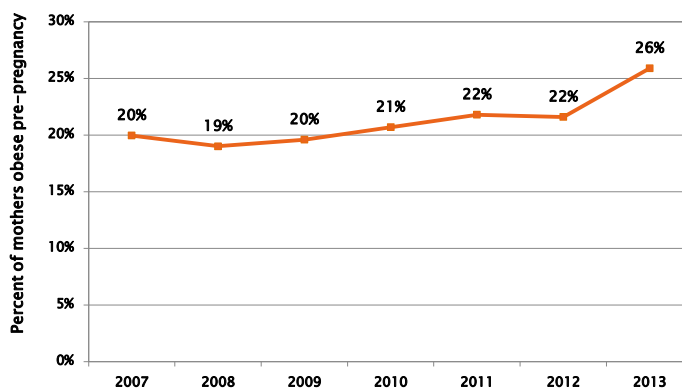
1st Trimester Entry into Prenatal Care



Source: Yolo County MCAH Program, Vital Records

13

Percent of Yolo County Mothers with Pre-Pregnancy BMI >30 (Obese), 2007-2013

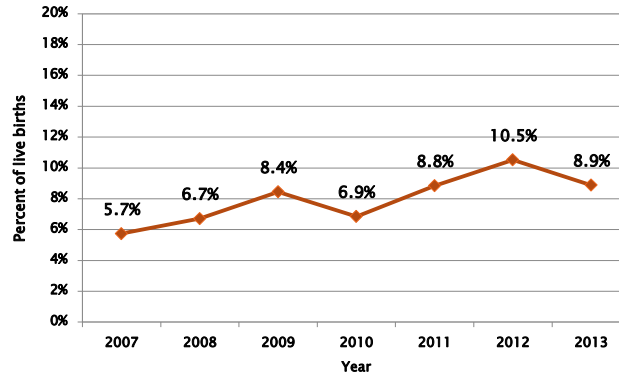


Significant for increasing trend (R-squared=0.71)

Source: Yolo County MCAH Program, Vital Records

14

Percent of Yolo County Births with Gestational or Pre-Pregnancy Diabetes as a Complicating Factor, 2007-2013



Increasing trend: R-squared = 0.67
 Source: Yolo County MCAH Program, Vital Records

15

Percent of Yolo County Resident Births with Gestational Diabetes by Hospital (2013)

Complication	California (2010)	SDH (n=853 births)	WMH (n=578 births)
Gestational Diabetes	7%	6%	13%

Source: Yolo County MCAH Program, Vital Records

Perinatal Depression – 2012

For the Greater Sacramento Region (El Dorado, Placer, Sacramento, Sutter, Yolo, Yuba):

- 14.0% of women report prenatal depression (95% CI 10.0 - 18.0)
- 13.9% of women report postnatal depression (95% CI 10.4 - 17.4)

Data Source: Maternal and Infant Health Assessment Survey 2012
Prepared by: Maternal, Child and Adolescent Health Program,
Center for Family Health, California Department of Public Health

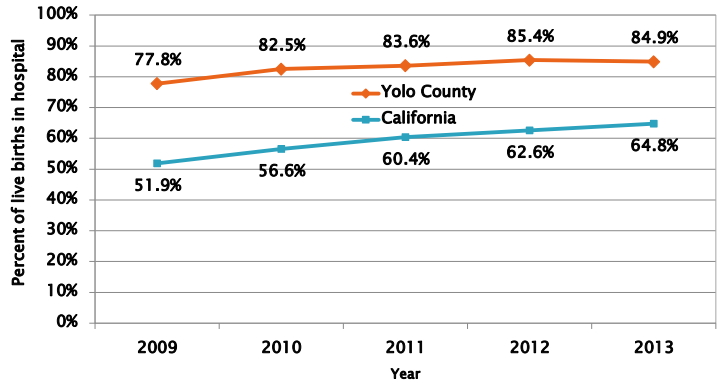
17

Infant Health

- Breastfeeding initiation and duration
- Low birth weight
- Fetal and Infant Deaths

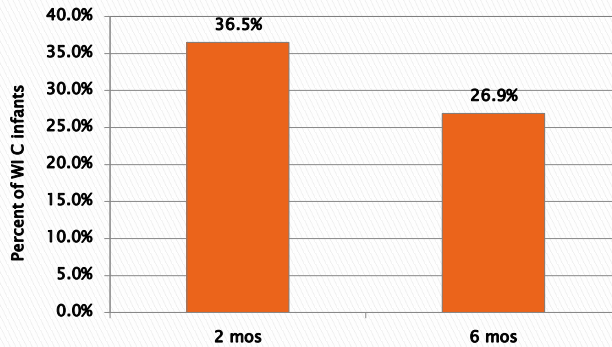
18

In-Hospital Exclusive Breastfeeding, Yolo County vs. California



Source: California Department of Public Health, In-Hospital Newborn Screening.

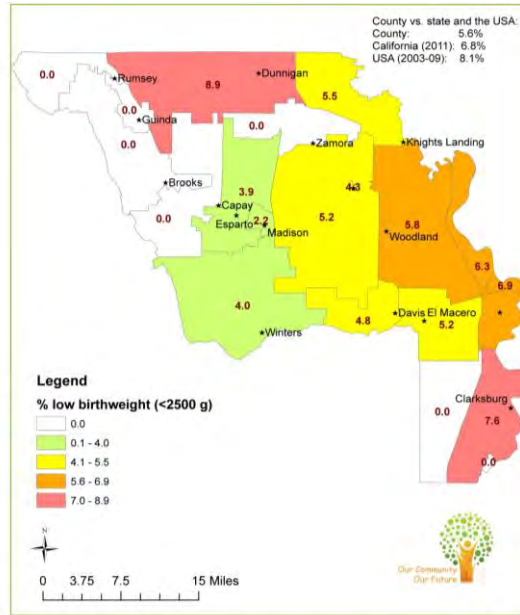
Exclusive Breastfeeding Duration, Infants receiving WIC, 2014



Source: Yolo County WIC (Raptor) 2014

Greater Sacramento area, exclusively breastfed at 3 mos: 31.1%
 Source: Maternal & Infant Health Assessment Survey (2012).

Percent of Births with Low Birthweight by ZIP Code, Yolo County, 2009-2013



Source: Yolo County MCAH Program, Vital Records

21

Birth Outcomes: Infant Death

Infant Death Outcomes	Yolo 2002-6	Yolo 2007-11	CA 2006-10	HP 2020 Goal
No. live births	12321	12391	2716614	
All infant deaths	52	43	14782	
Infant mortality rate*	4.2	3.5	5.4	6.0

*Deaths per 1,000 live births

Source: California Department of Public Health, Vital Statistics; Yolo County Health Department, Vital Records.

22

Birth Outcomes: Fetal Death

Yolo County Fetal Death Outcomes	Yolo 2002-6	Yolo 2007-11	CA 2006-10	HP2020 Goal
At \geq 20 weeks of gestation	68	67	14153	
Fetal death rate*	4.8	5.4	4.3	5.6
At \geq 28 wks of gestation	33	36	7262	
Late fetal death rate**	2.7	2.9	2.7	none
At \geq 28 wks of gestation or <7 days old	66	59	14774	
Perinatal death rate**	5.4	4.7	5.4	5.9

*Deaths per 1,000 live births + fetal deaths at \geq 20 wks

**Deaths per 1,000 live births + fetal deaths at \geq 28 wks

Source: California Department of Public Health, Vital Statistics; Yolo County Health Department, Vital Records.

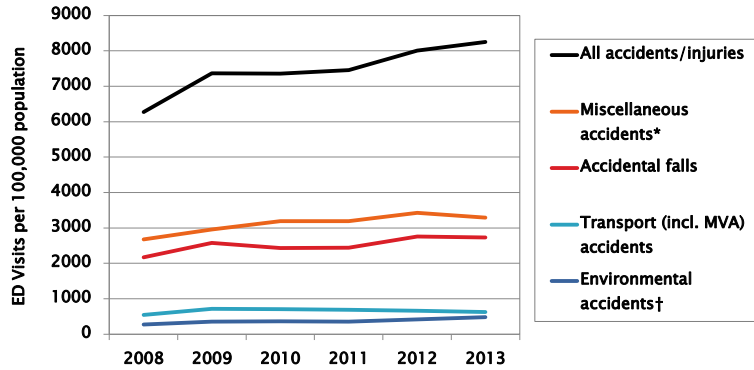
23

Child health

- » Injury
- Abuse/neglect
- Overweight/obesity
- Immunizations

24

Emergency Dept Pediatric Visit Rates for Accident & Injury, Yolo County 2008-13



Hospitalization rates in the same period have not increased.

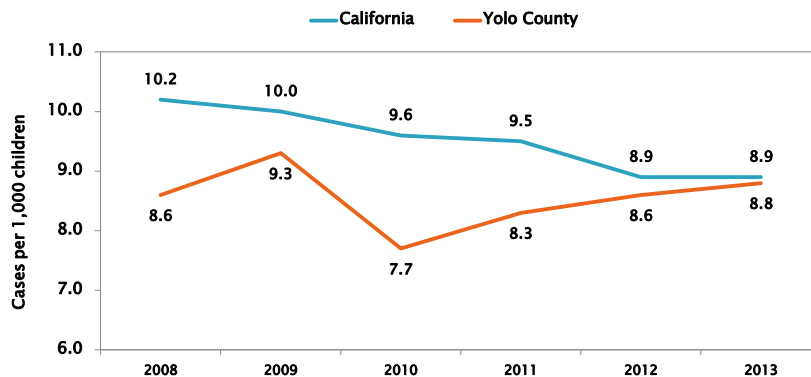
*Caused by falling/striking object/person, machinery, cutting/piercing instruments, electricity, radiation, repetitive stress.

†Caused by excess heat or cold, outdoor exposure, neglect, flood, weather, poisonous plants, animal bites, travel/motion.

Data Source: OSHPD

25

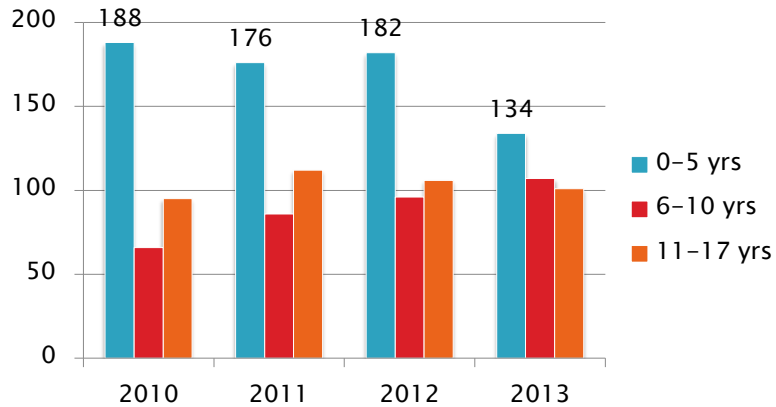
Substantiated Cases of Child Abuse and Neglect: 2008-13, Yolo County vs. CA



Data Source: As cited on kidsdata.org

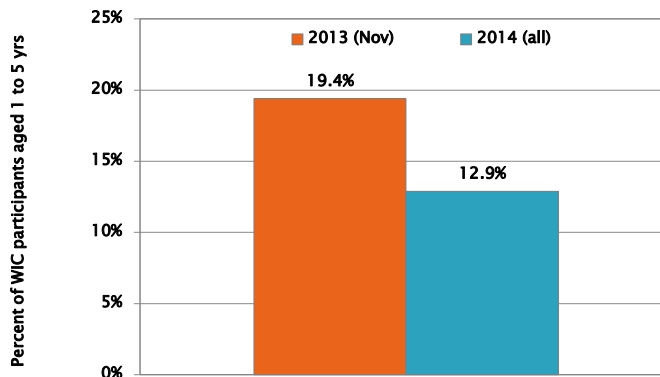
26

Substantiated Cases of Child Abuse and Neglect: 2010 – 2013, Yolo County



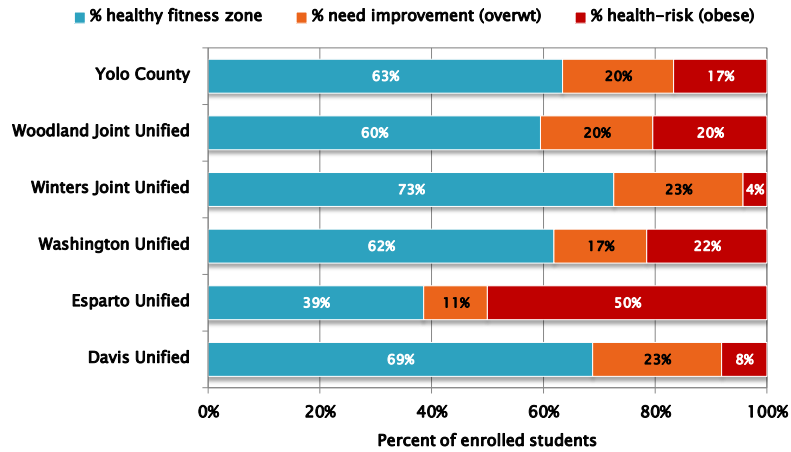
Data Source: As cited on kidsdata.org. (Nov. 2014).

Obesity – Percent of WIC Children aged 1–5 years, 2014



Source: Yolo County WIC (Raptor), 2013 & 2014

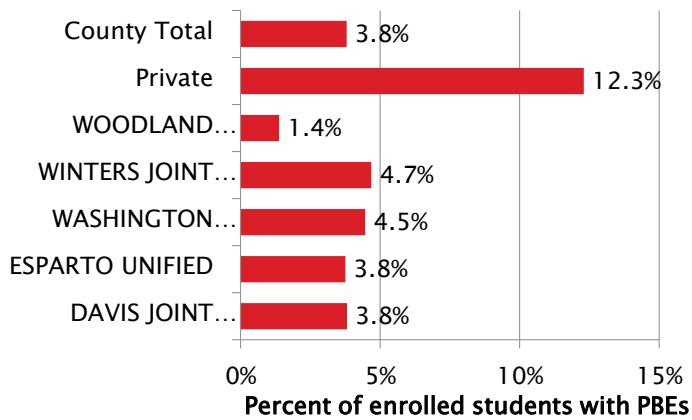
Body Composition of 7th Graders by District, Yolo County, 2013-14



Source: California Dept of Education, School Physical Fitness Testing

29

Percent of Kindergarteners with PBEs by School District, Yolo County 2013-14



Source: CDPH Immunization Branch

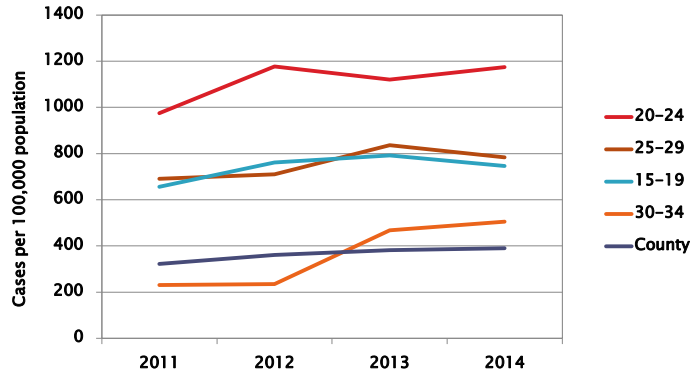
Percent of Yolo County Kindergarteners Up-to-Date for Required School Vaccines, 2009-2014

School District	2009-10	2010-11	2011-12	2012-13	2013-14	R ²	Trend
Davis	92%	92%	92%	93%	94%	0.59	Weak increase
Esparto	98%	100%	95%	97%	96%	0.22	None
Washington (West Sac)	95%	74%	90%	87%	85%	0.02	None
Winters	98%	96%	97%	89%	93%	0.54	None
Woodland	96%	97%	98%	96%	98%	0.13	None
Private	85%	83%	83%	82%	78%	0.82	Decrease
Total	94%	89%	93%	92%	92%	0.04	None

Adolescent Health

- » Sexual health
- » Teen pregnancy

Chlamydia Rates by Age Group, Yolo County, 2011-2014

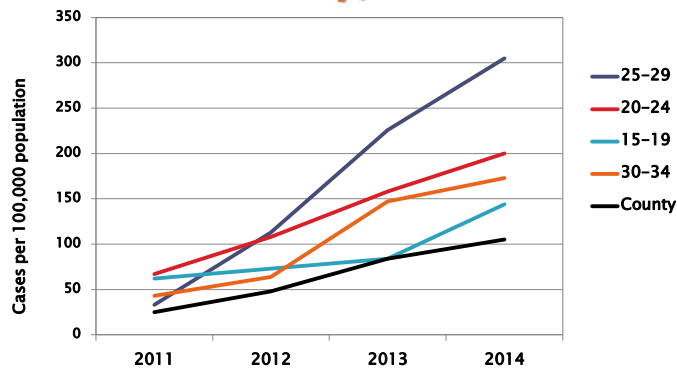


80% of cases in Yolo County occurred in 15 to 29-year-olds

Source: Yolo County Communicable Disease Control

33

Gonorrhea Rates by Age Group, Yolo County, 2011-2014

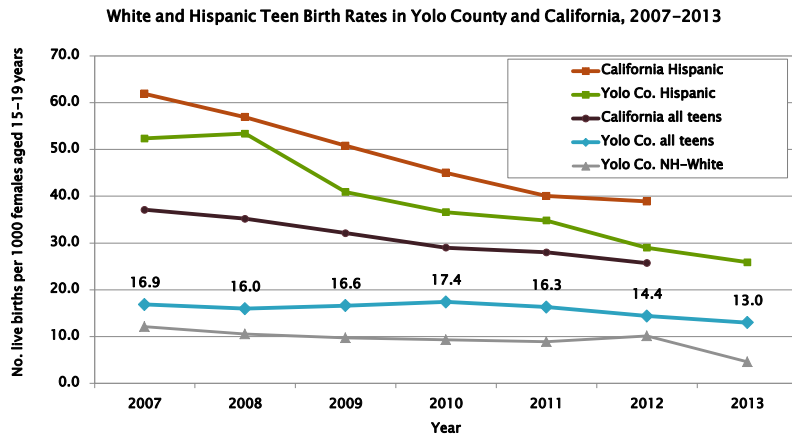


*Yolo County rates for 15- to 19- and 25- to 29-yr-olds do not differ from the 2013 State rate

Source: Yolo County Communicable Disease Control

34

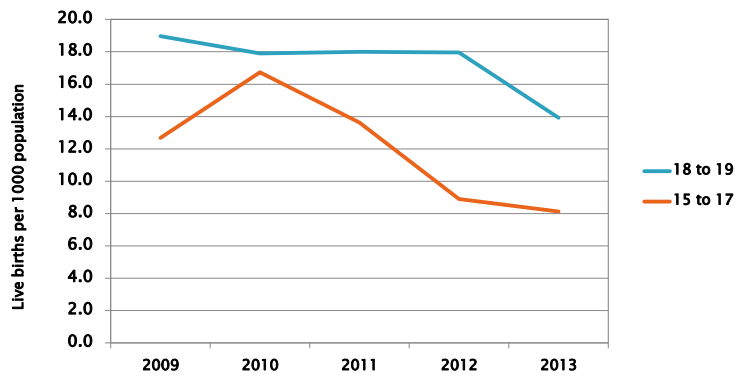
Trends in Teen Birth Rates



Source: Yolo County MCAH Program, Vital Records

35

Teen Birth Rates by Age Group, Yolo County, 2008–13



The rate for 15- to 17-year-olds has dropped by 50% since 2010.

Source: Yolo County MCAH Program, Vital Records

36

MCAH Program updates

- » Staffing
- Priority Areas
- Opportunities to get involved

37

MCAH Local Program Staff

- ▶ New MCAH Coordinator: Anna Sutton
- ▶ New MCAH Outreach Specialist for Adolescent Sexual Health (February 2015)
- ▶ New Public Health Nurse for Fetal Infant Mortality Review (FIMR) and Adolescent Family Life Program (AFLP) (February 2015)
- ▶ Jan, Ashley, Haydee Dabritz, Rosa Ramirez, Raquel Aguilar

38

Title V Maternal and Child Health Block Grant

- ▶ A primary source of federal support for improving the health and well-being of mothers and children.
- ▶ Title V MCH Block Grant requires a comprehensive statewide needs assessment every 5 years (due on July 15, 2015)
- ▶ Locally, the MCAH needs assessment process was completed in June 2014.
- ▶ By June 30th, 2015 a five year action plan will be developed and submitted to the State for each local priority area identified.

39

MCAH Priority Areas



Access to
Mental Health
Services



Perinatal Mood
and Anxiety
Disorders



Adolescent
Sexual Health



40

Community Partnerships

- ▶ MCAH Advisory Board: Meets 2nd Wednesday AM, ~every other month; public meeting
- ▶ FIMR Team: Meets 2nd Thursday at lunchtime, ~ every other month; team members only
- ▶ Perinatal Mental Health Collaborative: Meets 1st Friday Monthly, 12:30–2; contact Anna for details
- ▶ Healthy Yolo Community Health Improvement Plan, opportunities upcoming

41



2007-2011 FIMR 5-year Report Overview

Prepared for
Yolo County Maternal, Child & Adolescent Health (MCAH)
Advisory Board Retreat

January 14, 2015

Anna Sutton, PHN, MSN
Yolo County Health Services
Maternal, Child & Adolescent Health Programs
Anna.sutton@yolocounty.org
(530) 666-8649 Desk



2007-11 FIMR 5-year
Report Overview for CRT

Yolo County FIMR Snapshot

- Established in 1998
- Case Review Team
- Reviews 10-15 cases/year
- Multidisciplinary
- Community Action Plan
- Yolo County MCAH facilitates
- First 5-year report in 2008

Current FIMR Team Members

- **Sheik Ali, Yolo County Coroner's Office**
- Flora Alvarez, Yolo County Department of Health Services, Vital Records
- Djina Ariel, Dignity Health/Woodland Healthcare
- Jan Babb, Yolo County Department of Health Services
- Rick Baker, Community Member
- Sarah Burke, CommuniCare Health Centers
- Constance Caldwell, Yolo County Department of Health Services
- Priya Chib, Dignity Healthcare/Woodland Healthcare
- Haydee Dabritz, Yolo County Department of Health Services
- Katherine Eastham, Kaiser Permanente
- Rachel Fox-Tierney, Birthstream Midwifery
- Julie Gallelo, First 5 Yolo
- Jessica Hackwell, Partnership HealthPlan of California
- Kelly Hood, Yolo County Department of Employment and Social Services
- Ashley Logins-Miller, Yolo County Department of Health Services
- Thom Mahoney, CommuniCare Health Centers
- Holly Moen, Winters Healthcare Foundation
- **Gina Moya, Yolo County Coroner's Office**
- Donna Nevraumont, Community Member
- Laura Nielsen, Yolo County Department of Employment and Social Services
- Amina Richards, Partnership HealthPlan of California
- Mary Ann Robinson, CommuniCare Health Centers
- Zach Romawac, Partnership HealthPlan of California
- Sajiv Saxena, Dignity Health/Woodland Healthcare
- Leon Schimmel, CommuniCare Health Centers
- Craig Seelig, Yolo County Probation
- LaRae Shaw-Meadows, Yolo County Department of Employment and Social Services
- Shawntel Simeone, Dignity Health/Woodland Healthcare
- **Nancy Stone, Yolo County Coroner's Office**
- **Rob Strange, Yolo County District Attorney's Office**
- Anna Sutton, Yolo County Department of Health Services
- **Laura Valdes, Yolo County District Attorney's Office**
- Judi Vallero, Sutter West Medical Group
- Tia Will, Kaiser Permanente

FIMR 5 year Report *Purpose*

To explain in detail what was learned and what actions were taken through selected fetal and infant deaths between 2007-2011.



2007-11 FIMR 5-year
Report Overview for CRT

FIMR 5 year Report *Goal*

To provide stakeholders with invaluable information and recommendations that will encourage new and improved programs and policies to prevent fetal and infant deaths in our community.



2007-11 FIMR 5-year
Report Overview for CRT

The issues we have tackled...

- Safe Sleep
- Interpersonal Violence
- Substance Use in Pregnancy
- Perinatal Mental Health
- Healthy System Policy
- Access to Prenatal Care
- Grief/Bereavement Support
- Culturally Sensitive Materials & Resources
- Maternal Obesity

Data Analysis

Risk Factors:

- Fetal
- Neonatal
- Infant

Fetal, Neonatal & Infant

Birth weight

Prematurity

Congenital Anomalies

Multiple Gestation

Other associated factors

Data Analysis

- Maternal Risk Factors

Maternal Factors

Placenta or cord problems

Accidental injury to mother during pregnancy

Prior fetal demise

Other chronic health problems

Obesity and Diabetes

Maternal Age

Prenatal Care (initiation, quality)

New for the 2007-2011 Report

Data on Maternal Mental Health & multiple stressors during pregnancy

Yolo County moms are not doing well...

- Numbers of pregnant Yolo County moms ages 15-44 with a concurrent mental health diagnosis were hospitalized at increasing rates starting in 2003.
- Yolo County moms in this category are hospitalized at a significantly higher rate than the state average.
- Pregnant women with a substance use diagnosis were significantly higher and have trended up since ~2009.


Perinatal Periods of Risk

PPOR analysis and comparison of the 2008 report with the 2014 report confirm that **Maternal Risk Factors** are the newest challenge to prioritize for Yolo County.


“Children are our future & their mothers are its guardians”

-Kofi Annan
2001 Nobel Peace Prize Winner

**YOLO COUNTY
PERINATAL MENTAL HEALTH
COLLABORATIVE**



MCAH
Advisory
Board Annual
Retreat
January 14,
2015



1

MISSION STATEMENT

Promote **maternal wellness** by developing and maintaining a system of care for Yolo County mothers who are at risk for or experiencing perinatal mood and anxiety disorders.

Yolo County Perinatal Mental Health Collaborative
Overview January 2015

2

3 GOALS

1. Assure perinatal mental health resource information is easy to access by all community members.
2. Maintain a strong county-wide & multidisciplinary collaborative.
3. Develop platform (s) that give providers/professionals access to local tools, research & best practices around screening, assessment, referring and treatment perinatal mental health disorders.

AGENCY PARTICIPATION

Agency	
2-1-1 Yolo	Woodland Healthcare/Dignity Health
BirthStream	Woodland Police Department
Center for Families (CFF)	YCOE/Head Start
CommuniCare Health Centers (CCHC)	Yolo County Children's Alliance (YCCA)
Community Members	Yolo County Department of Employment and Social Services (DESS)
First 5 Yolo	Yolo County District Attorney's Office
Foster & Kinship Care Education	Yolo County Health Services – ADMH
Kaiser Permanente – Pediatrics	Yolo County Health Services – Vital Records
Partnership HealthPlan of California (PHC)	Yolo County Health Services – WIC
Postpartum Support International	Yolo County Health Services – MCAH
Progress House	Yolo Family Services Agency (YFSA)
Winters Healthcare Foundation	

OUR HISTORY

- Launched in March 2014 based on the FIMR Community Action Plan priority areas.
- Priority issue identified by MCAH 5 year Title V Needs Assessment process (2013-2014)
- Monthly Meetings: First Friday of every month, 12:30-2pm at Yolo County Health Services.
- Facilitated by Yolo County MCAH staff members.
 - Contact: anna.sutton@yolocounty.org
 - (530) 666-8649, Desk

YEAR 1 ACTION PLAN

- **Awareness & Outreach**
 - **May Campaign:** agency presentations, social media posts, agency endorsements, traveling *blue dot*
 - **Blue Dot:** new universal symbol for “postpartum depression”



- **Screening & Resource Mapping Project**
- **Website development**

THE STATEWIDE CONVERSATION...

- CA Maternal Quality Care Collaborative – Stanford University
- Contra Costa County Perinatal Depression to Wellness Network
- Inland Empire Perinatal Depression Collaborative
- Los Angeles County Perinatal Mental Health Taskforce
- Placer County Mental Depression Task Force
- Santa Barbara County: Postpartum Education for Parents
- Santa Clara County Public Health Department
- Santa Cruz Perinatal Mental Health Coalition
- Silicon Valley Coalition for Maternal Wellness
- Butte County Health Services/First 5
- Tulare County Public Health/WIC collaboration
- Sacramento Regional Perinatal Mental Health Taskforce
- ***Yolo County Perinatal Mental Health Collaborative***



Yolo County Perinatal Mental Health Collaborative
Overview January 2015

7

QUESTIONS?

Yolo County Perinatal Mental Health Collaborative

Contact:

Anna Sutton, RN, PHN, MSN
Yolo County Health Services – MCAH

anna.sutton@yolocounty.org

Desk: 530-666-8649

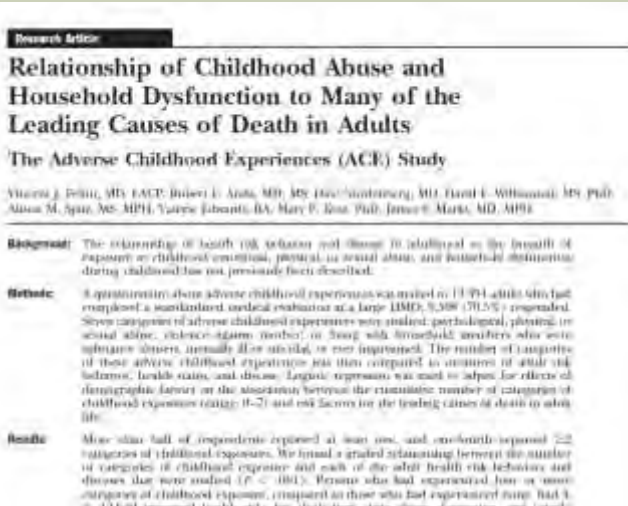
Yolo County Perinatal Mental Health Collaborative
Overview January 2015

8

YOLO COUNTY ACES CONNECTION™

Yolo County
MCAH
Advisory
Board Retreat
January 14,
2015

ADVERSE CHILDHOOD EVENTS



ADVERSE CHILDHOOD EXPERIENCES

- A connection between your past and your present
- Epigenetics: your grandmother's stress changed your DNA
- Toxic Stress: the unborn fetus is affected by mom's stress
- A community issue
 - Prevention opportunity for mothers & the unborn
 - Early intervention for newborns, children, young adults
 - Intervention for adults

ACES CONNECTION™

- Web based network connecting people and groups from around the State, Nation and World who are interested in Adverse Children Experiences
- Developed by journalist, [Jane Stevens](#)
- Funded by the [Robert Woods Johnson Foundation](#)
- Yolo County is just one of the many groups on ACES Connection™



YOLO COUNTY ACES CONNECTION

GOAL

We are educating people in Yolo County, CA about ACEs. Our intent is that everyone in Yolo County integrate trauma-informed and resilience-building practices into their work, family, community and individual lives.

[Yolo County ACEs Connection](#)

FOR MORE INFORMATION

Websites

- [ACES Too High](#)– get your own ACEs score, ACEs in the news (Jane Stevens)
- [The Adverse Childhood Experiences Study](#) (Dr. Vincent Felitti)
- [ACES & Centers for Disease Control and Prevention \(CDC\)](#)

Interested individuals and stakeholders are invited to our monthly meetings. For an invitation to our Yolo County ACEs Connection group, contact: Anna Sutton @ anna.sutton@yolocounty.org

Yolo County Health and Human Services

Integration Planning Timeline: 2014-2015

Integration Action Step	Jan	Feb	Mar	April	May	June	July	Aug	Sept	Oct	Nov	Dec	Jan
1. Board of Supervisors approval of integration													
2. Formation of Planning Teams													
3. Identification of existing programs and services													
4. Map programs by population													
5. Develop Mission, Vision and Values													
6. Identify "low hanging fruit" integration options													
7. Outreach and feedback from stakeholders- Phase I <i>(staff, customer, and advisory group surveys)</i>													
8. Identify initial integration opportunities													
9. Initiate select integration opportunities													
10. Board of Supervisors update # 1													
11. Review of financial opportunities													
12. Review of legal issues													
13. Review of employee classifications													
14. Develop organizational structure													
15. Board of Supervisors update # 2													
16. Identify staff training and development needs													
17. Develop draft plan and implementation timeline													
18. Review draft plan													
19. Outreach and feedback from stakeholders- Phase II													
20. Review final plan													
21. Present final plan to the Board of Supervisors													

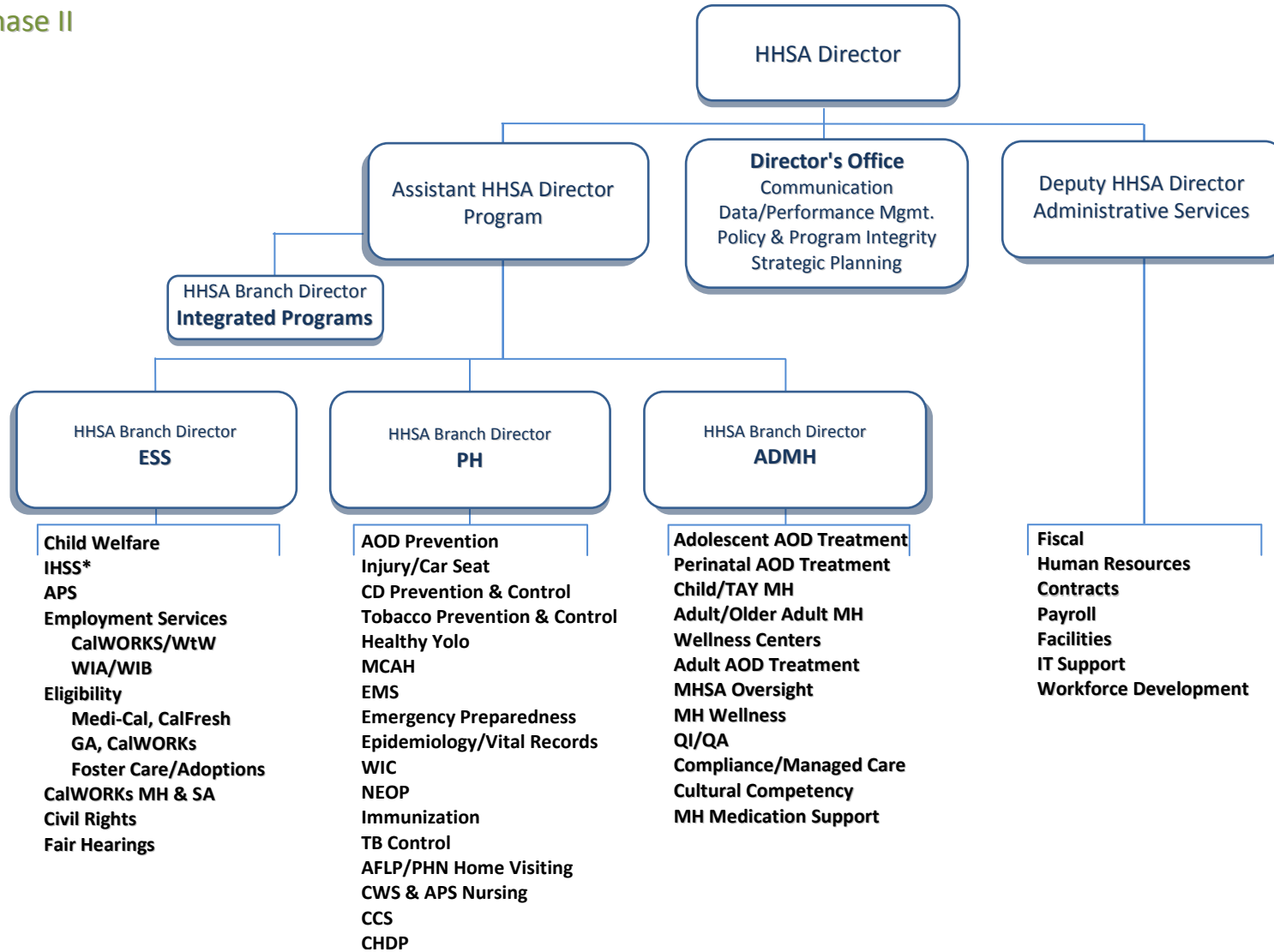
Color Key	
	Internal Action Steps
	Opportunities for Public Involvement



Yolo County Health and Human Services Agency

Draft Organizational Chart

Phase II



Abbreviation Key:

AA = Adult & Aging
 BOS = Board of Supervisors
 CWS = Child Welfare Services
 EW = Eligibility Worker
 HR = Human Resources
 MCAH = Maternal, Child & Adolescent Health
 PA = Physical Activity
 QI = Quality Improvement
 TB = Tuberculosis

ADMH = Alcohol, Drug and MH
 CCS = California Children's Services
 CYF = Child, Youth & Family
 FY = Fiscal Year
 IHSS = In-Home Supportive Services
 MDT = Multi-Disciplinary Team
 PH = Public Health
 RFP = Request for Proposal
 WIA = Workforce Investment Act

AFLP = Adolescent Family Life Program
 CD = Communicable Disease
 DMC = Drug Medi-Cal Certification
 GA = General Assistance
 IP = Integrated Programs
 MH = Mental Health
 PHN = Public Health Nurse
 RFP = Request for Proposal
 WIB = Workforce Investment Board

AOD = Alcohol & Other Drugs
 CHDP = Child Health & Disability Prevention
 EMS = Emergency Medical Services
 HIPAA = Health Insurance Portability & Accountability Act
 IT = Information Technology
 MHSA = Mental Health Services Act
 P&P = Protocol & Procedure
 SMI = Seriously Mentally Ill
 WIC = Women, Infant and Children

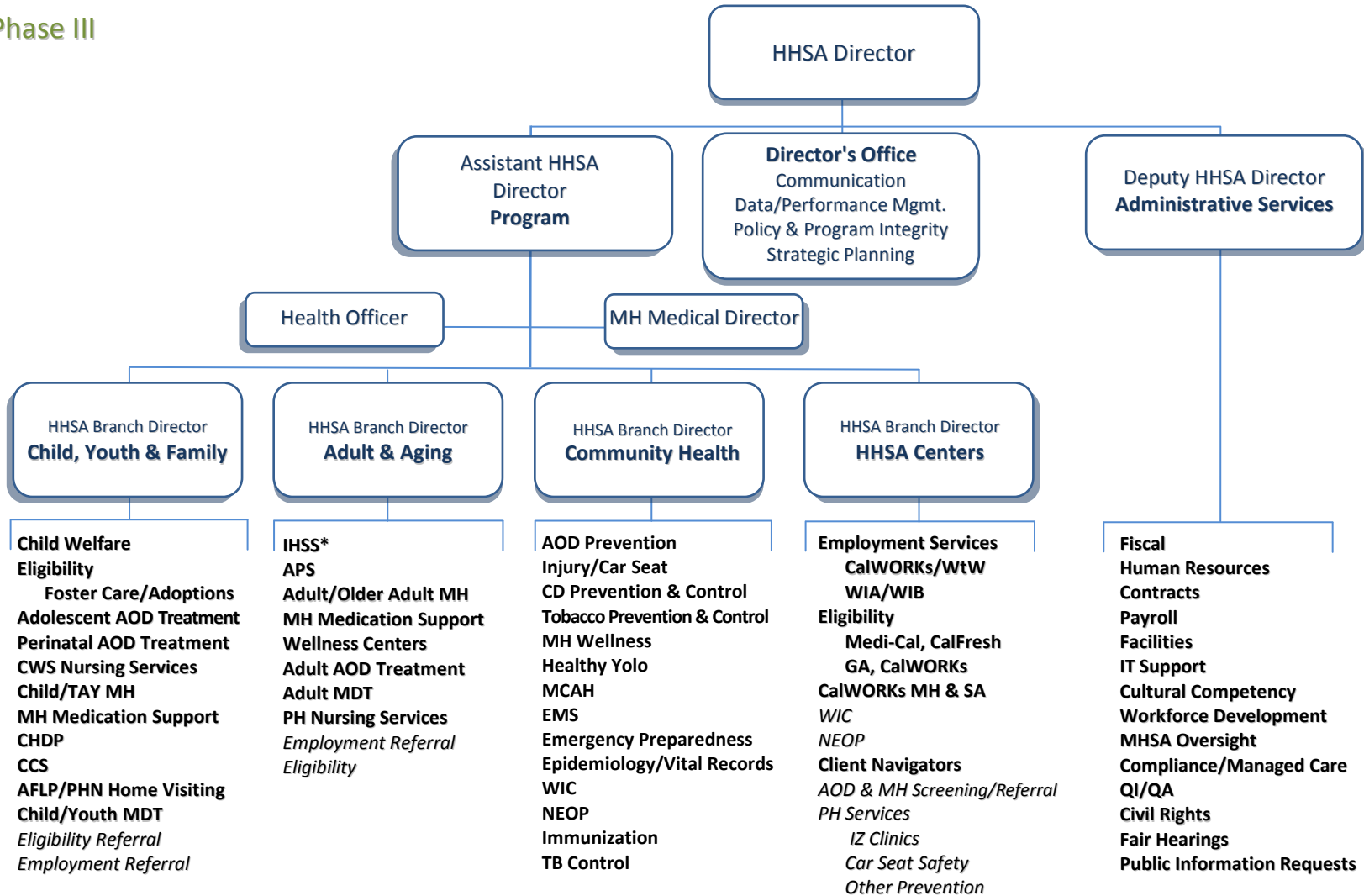
APS = Adult Protective Services
 CHS = Drug Medi-Cal Certification
 ESS = Employment and Social Services
 HO = Health Officer
 IZ = Immunization
 NEOP = Nutrition Education & Obesity Prevention
 QA = Quality Assurance
 TAY = Transitional Age Youth
 WtW = Welfare to Work

*The Public Authority reports to the Board of Supervisors, but has strong collaborative relationships with the IHSS Program, and is co-located with its staff.

Yolo County Health and Human Services Agency

Draft Organizational Chart

Phase III



BOLD reflects Core Programs within this Branch. *ITALICS* reflect Supplemental Program/Service in this Branch, reports to another Branch.

*The Public Authority reports to the Board of Supervisors, but has strong collaborative relationships with the IHSS Program, and is co-located with its staff.