

Yolo County Community Corrections Partnership Dashboard

Summary

Average Jail Population- In Custody	February 2015
Felony	333
Misdemeanor	36
Other	0
Total	369

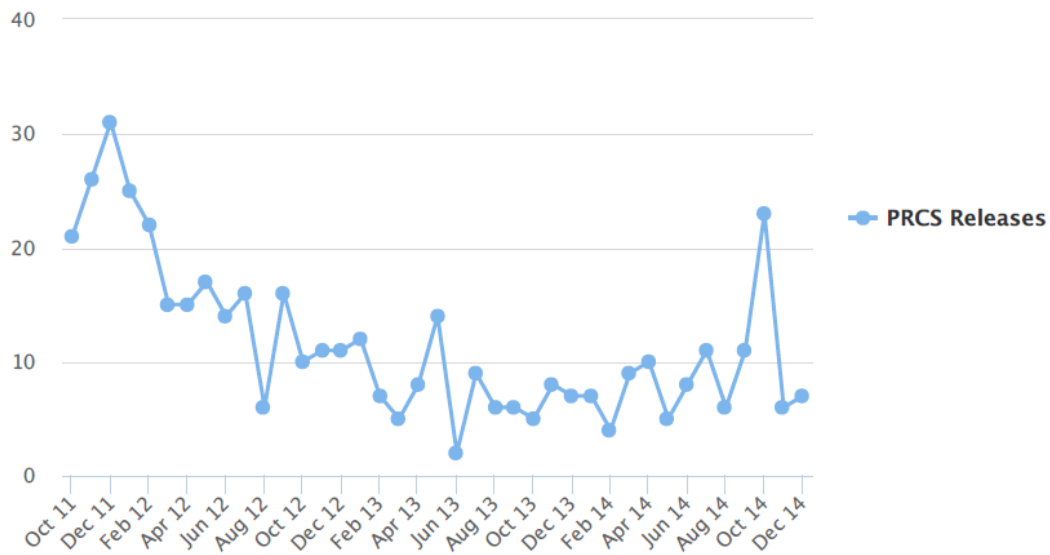
**Local Prison Realigned Offender statistics provided by Yolo County Sheriffs Department (Contact: Undersheriff: Tom Lopez)*

Probation Population (Probation's Law Suite)	February 2015
Total Probation Population	2067
~High Risk	654
~Med/Low Risk Banked	747
Bench Warrant (Probation, 1170, Pre-Trial)	635
PRCS Warrants	31

**Probation Population statistics provided by Yolo County Probation Department (Contact: Assistance Chief Ray Simmons)*

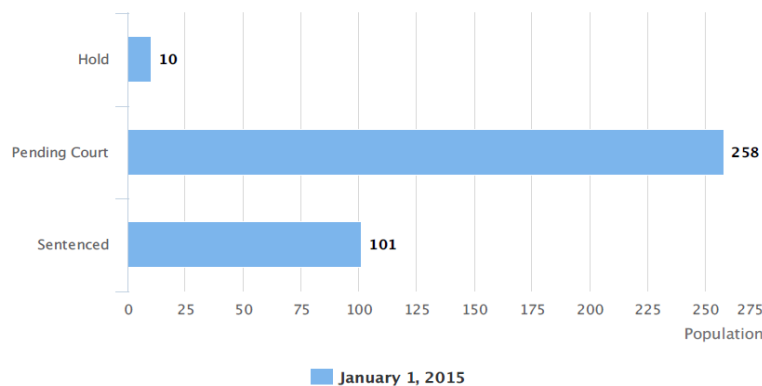
Yolo County PRCS Releases

**All Jail Population statistics provided are generated by the Yolo County Probation Department (Contact: Assistant Chief Ray Simmons)*



Average Jail Population – January 2015

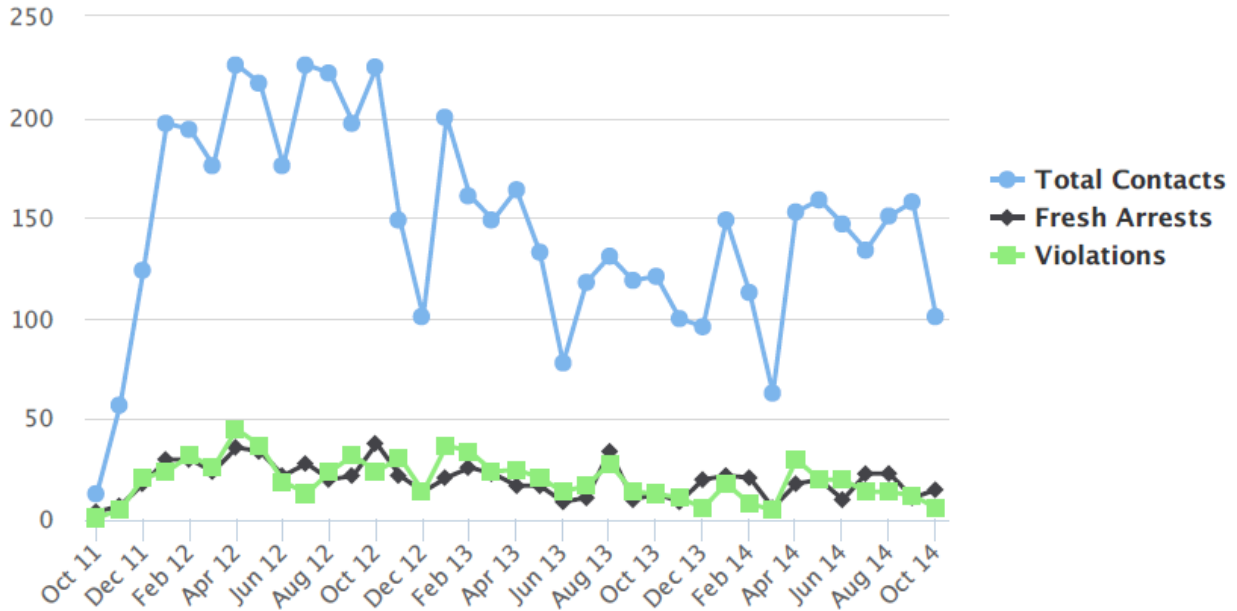
Source: Yolo County Sheriffs Department (Contact: Undersheriff Top Lopez)



Supervision and PRCS

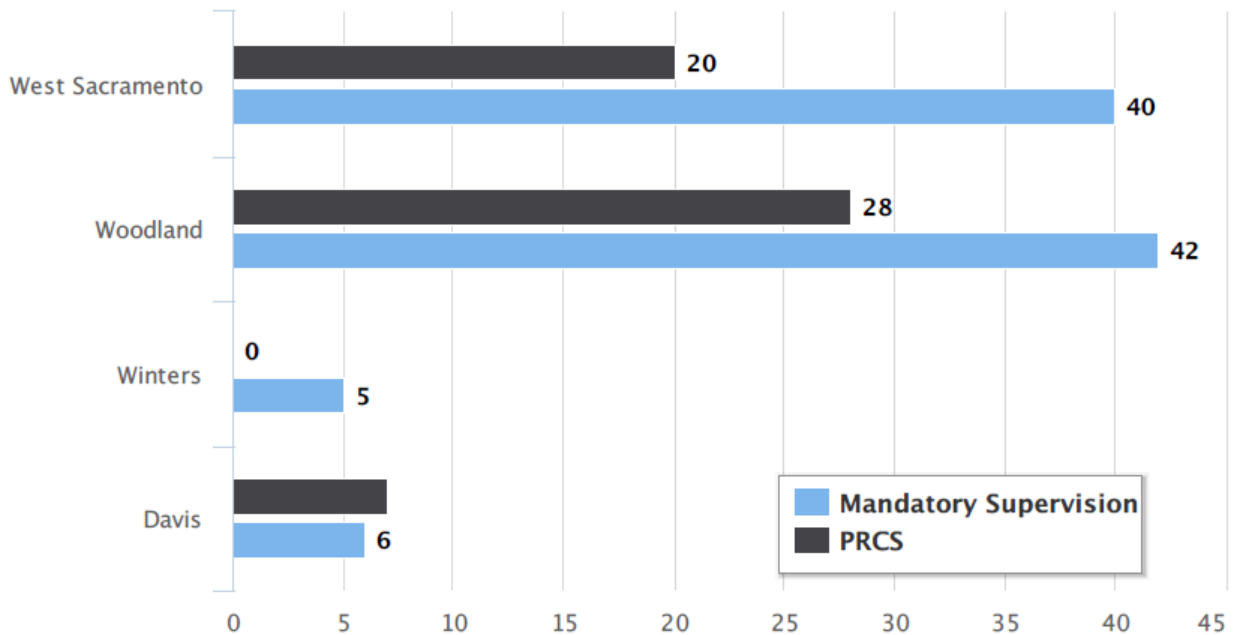
PRCS Police Department Contacts

*PRCS Police Department Contacts collected by Woodland Police Department, West Sacramento Police Department, Winters Police Department, Yolo County Sheriffs Office in coordination with the Yolo County Probation Department (Contact: Chief Landy Black)



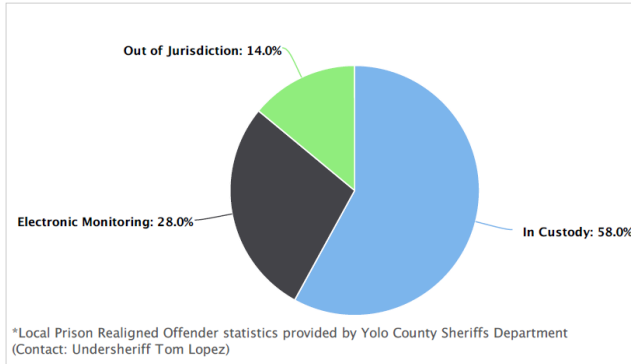
Realigned Offender Residence- January 1, 2015

*All Jail Population statistics provided are generated by the Yolo County Probation Department (Contact: Assistant Chief Ray Simmons)

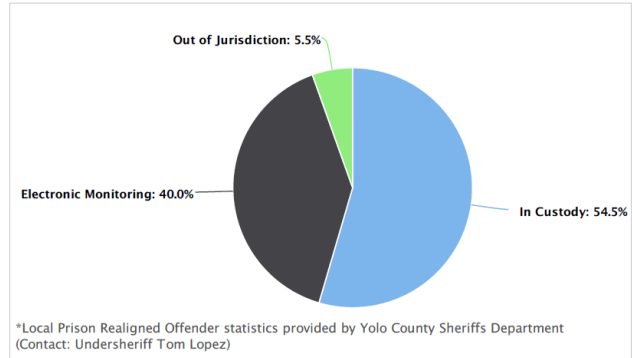


Jail and 1170(h)

1170(h) Jail Only Sentence Offenders – February 2015



1170(h) Split Sentence Offenders – February 2015



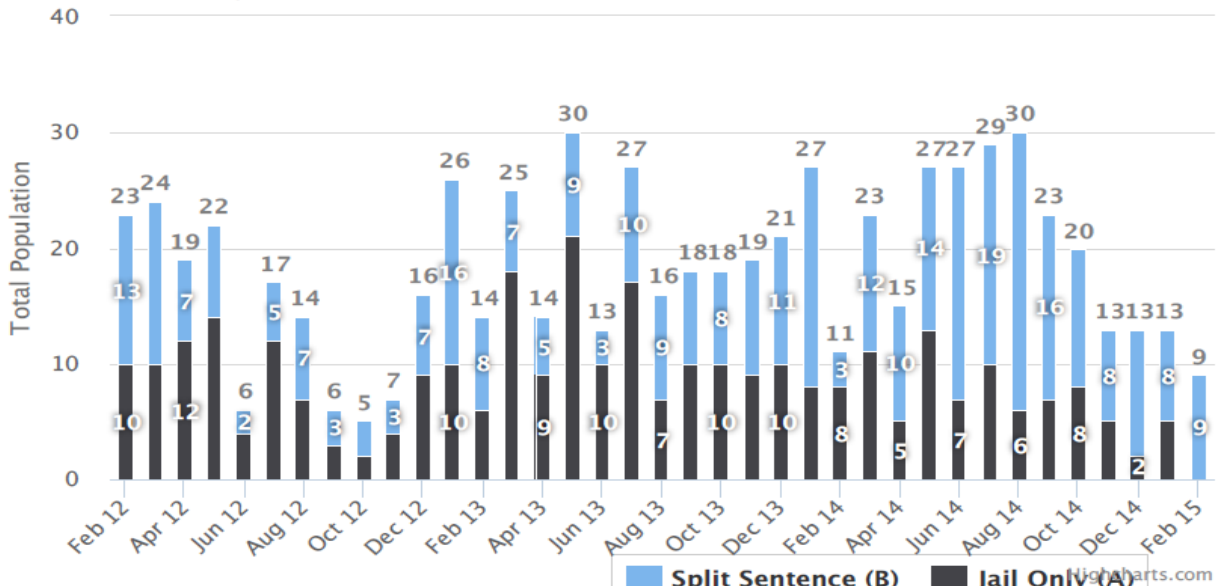
Alternative to Custody Average Population– February 2015 (Jail and Probation)	
Electronic Monitoring	36
Home Custody	15
Offenders on Work program	59
Pre-Trial Supervision	105

AB 109 Jail Population Average Population– February 2015	
1170(h) Offenders in Custody	59
Sentenced Parole Violators	4
PRCS or MS Violators	4
PRCS/MS Pending	4
Parole Violator Pending	4

**Local Prison Realigned Offender statistics provided by Yolo County Sheriffs Department (Contact: Undersheriff: Tom Lopez)*

Local Prison (1170h) Sentences by Type

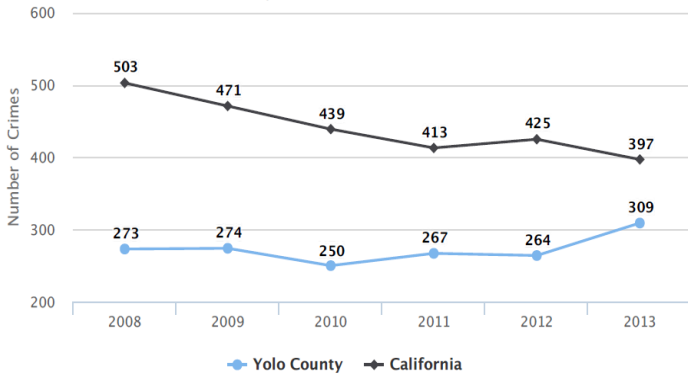
*Local Prison Realigned Offender statistics reported by Yolo County Sheriffs Office (Contact: Undersheriff Tom Lopez)



Crime Rates

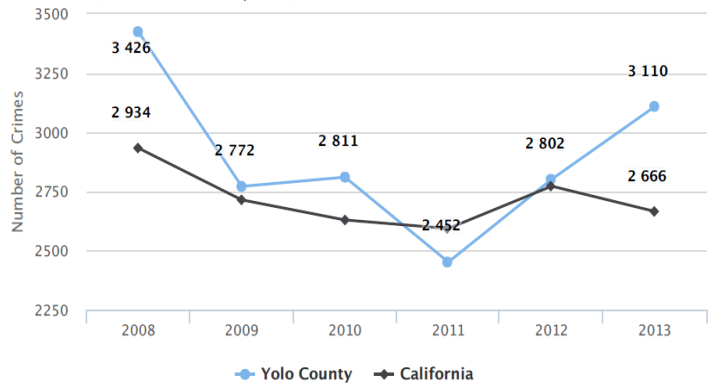
Violent Crime per 100,000 Residents

*Part 1 Crime Rates statistics provided by Woodland Police Department, West Sacramento Police Department, Winters Police Department, Davis Police Department and Yolo County Sheriffs Office (Contact: Chief Landy Black)



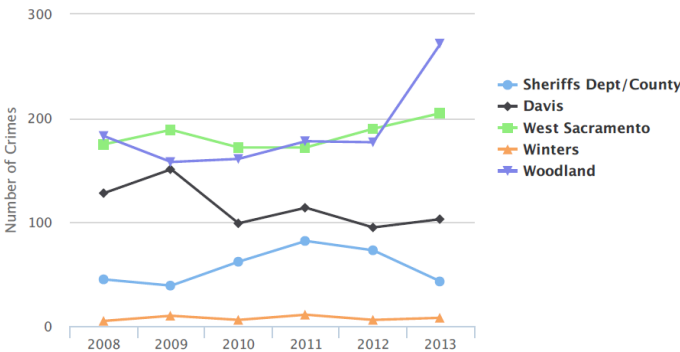
Property Crime per 100,000 Residents

*Part 1 Crime Rates statistics provided by Woodland Police Department, West Sacramento Police Department, Winters Police Department, Davis Police Department and Yolo County Sheriffs Office (Contact: Chief Landy Black)



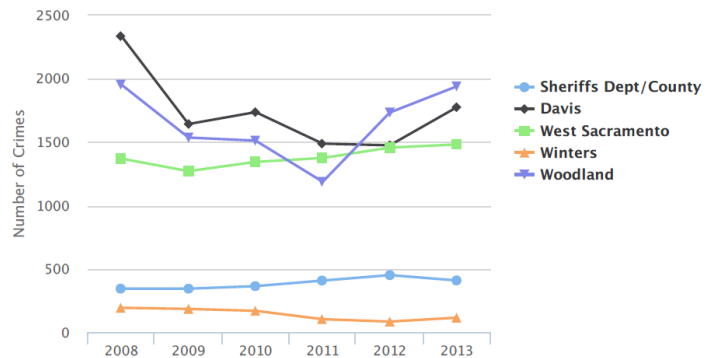
Actual Violent Crime Rates

*Part 1 Crime Rates statistics provided by Woodland Police Department, West Sacramento Police Department, Winters Police Department, Davis Police Department and Yolo County Sheriffs Office (Contact: Chief Landy Black)



Actual Property Crime Rates

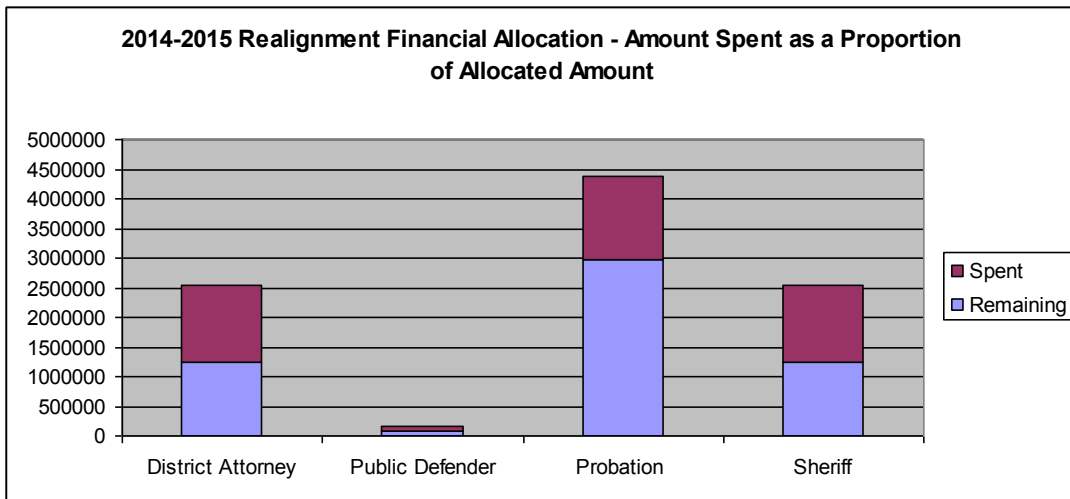
*Part 1 Crime Rates statistics provided by Woodland Police Department, West Sacramento Police Department, Winters Police Department, Davis Police Department and Yolo County Sheriffs Office (Contact: Chief Landy Black)



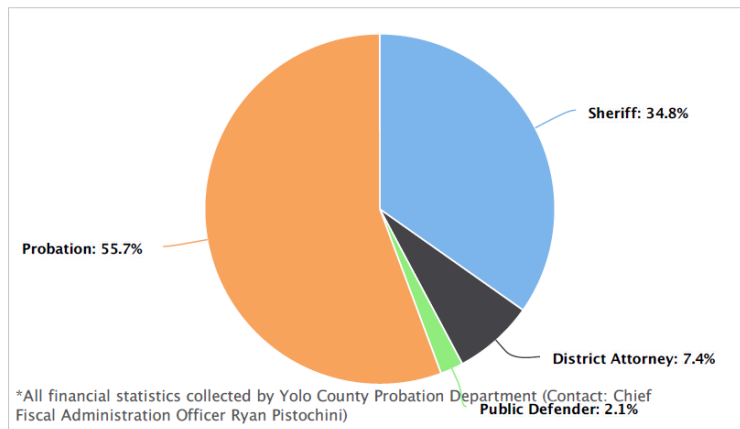
2013 Crime Rates per 100,000 Residents			
	Violent Crime	Property Crime	Total
California	397	2665	3062
All Yolo County	309	3110	3419
Yolo County (Sheriff Dept.)	172	1635	1807
Davis	156	2687	2843
West Sacramento	412	2980	3392
Winters	114	1644	1758
Woodland	481	3436	3917

Financial

2014-2015 Realignment Financial Allocation			
	Appropriation	Remaining	% Unused
CCP Services	-	-	-
District Attorney	\$539,509.00	\$195,950.00	36%
Public Defender	\$153,892.00	\$88,433.00	57%
Police	\$330,000.00	\$330,000.00	100%
Probation	\$4,045,929.00	\$2,961,728.00	73%
Sheriff	\$2,527,161.00	\$1,249,734.00	49%
<i>Total Realignment Budget</i>	<i>\$7,596,491.00</i>	<i>\$4,825,845.00</i>	<i>64%</i>



2014-2015 Realignment Financial Allocation



Rehabilitative Services

Woodland Out-of-Custody day Reporting Center	Jul-14	Aug-14	Sep-14	Oct-14	Nov-14	Dec-14	Jan-15
DRC Referrals							
PRCS (Prob)	2	1	3	1	2	1	0
Mandatory Supervision (Prob)	3	1	4	0	1	2	0
Probation (Prob)	12	8	5	11	6	2	7
Electronic Monitoring (Sher.)	11	21	11	6	3	16	10

Woodland Active Out-of-Custody Population	Jul-14	Aug-14	Sep-14	Oct-14	Nov-14	Dec-14	Jan-15
Probation's Active Pop.	25	26	19	21	21	11	15
Sheriff EM Active Pop.	28	30	28	27	20	22	22
<i>Successful Completion</i>			1	1	7	7	1
<i>Failure</i>			6	7	2	11	6

West Sac Out-of-Custody Day Reporting Center	Jul-14	Aug-14	Sep-14	Oct-14	Nov-14	Dec-14	Jan-15
DRC Referrals							
PRCS(Prob)	4	1	0	0	0	0	0
Mandatory Supervision(Prob)	2	2	0	0	0	0	0
Probation(Prob)	8	6	4	4	4	5	3
Electric Monitoring (Sher.)	0	0	0	1	1	1	2
Total In Program	14	9	4	5	5	6	5
Probation Referred Active Pop.	24	24	21	20	22	12	22
Sheriff Em Active Pop.	5	3	4	4	4	2	1
Total Number of Direct Service Hours			921	951	508	231	302
<i>Total Number of Random UA Tests Conducted</i>			30	34	12	19	22
<i>Total Number of Positive UA Tests</i>			15	29	6	8	10

Sheriff In Custody Services	Aug-14	Sep-14	Oct-14	Nov-14	Dec-14
Woodland Library GED					
Active	6	7	12	10	9
Completion	1	1	0	2	0
Failure	0	0	0	0	0
Program Active (total)	11	10	12	12	11
NCCT (capacity 20)					
Completion	1	0	0	0	0
Failure/Left	9	5	9	12	4
Waiting List	87	114	21	15	14
Active Population	20	16	9	9	9
CFMG					
Enrolled	118	131	162	161	166
Sheriff Active total	149	157	174	173	177

CommuniCare	Jul-14	Aug-14	Sep-14	Oct-14	Nov-14	Dec-14	Jan-15	Feb-15
CommuniCare OSARP Referrals	8	12	17	7	1	3	8	9
West Sacramento			9	3	1	0	3	2
Woodland			8	4	0	3	3	7
Engaged OSARP after Referral		10		1	0	2	6	7
Failed to Engage		2		6	1	1	2	2
<i>Active in Program</i>	26	24	29	22	18	16	13	15
<i>DRC 1 on 1</i>		4:24	4:29	5	2	2	1	2

Cache Creek Residential Referral	Jul-14	Aug-14	Sep-14	Oct-14	Nov-14	Dec-14	Jan-15	Feb-15
Residential Refer.	3	4	2	1	3	4	5	4
Successful Completion		1	0	0	1	1	0	0
Failure		3	2	0	0	1	2	1
<i>Active in Program</i>	3	3	2	3	2	2	3	3
Cache Creek Transitional	Jul-14	Aug-14	Sep-14	Oct-14	Nov-14	Dec-14	Jan-15	Feb-15
Cache Creek Transitional	2	3	3	3	11	11	9	9
Successful Transition		4	3	3	5	2	0	2
Failed		1	3	0	4	3	1	0
<i>Active Housed</i>	15	10	9	12	2	6	8	7

4th and Hope Residential Referral	Jul-14	Aug-14	Sep-14	Oct-14	Nov-14	Dec-14	Jan-15	Feb-15
4th and Hope Residential Referral	1	1	3	4	1	1	3	3
Successful Completion		1	1	0	1	1	2	2
Failure		1	1	6	1	1	1	3
<i>Active Program</i>	5	2	4	3	2	2	6	6
4th and Hope Transitional referral	Jul-14	Aug-14	Sep-14	Oct-14	Nov-14	Dec-14	Jan-15	Feb-15
4th and Hope Transitional referral	8	11	6	4	4	7	11	3
Successful Transition			5		0	1	1	3
Failure			1		1		2	0
<i>Active Housed</i>	14	16	17	12	6		14	15