

Yolo County Health Council
Woodland, California

February 12, 2015

MINUTES

The Yolo County Health Council (Council) met on the 12th day of February, 2015, in the Thomson Conference Room, Suite #1600 in the Health Department, Bauer Building, 137 N. Cottonwood Street, Woodland, California at 9:00 a.m.

Voting Members Present: Jan Babb, Alicia Kelley, Katy King-Goldberg, Jeneba Lahai, Gail Lorenz, Dawn Myers-Purkey, Valerie Olson, John Tan, Nathan Trauernicht, Tawny Yambrovich, Tia Will, Michael Wilkes, & Carri Ziegler

Voting Members Absent: Roger Clarkson, Julie Gallelo, Leslie Hunter, David Naliboff, Danny Sandoval, Trish Stanionis, LaTina Price, Michael Wilkes, Brenda Wright, Alan Yamashiro, & James Zuniga

Staff & Guests: Connie Caldwell, Scott Gowin, Emily Henderson, Traci Lucchesi, & Emily Vaden

9:00 A.M. CALL TO ORDER

1. Welcome and round table introductions
2. The Council did not achieve quorum. Council will table consideration for the approval of January 8, 2015 minutes and the appointment of Alicia Kelley to Health Council Chair at the March 12, 2015 meeting.

PUBLIC COMMENT / ANNOUNCEMENTS

3. Public Comment:
 - The California Endowment and Health Access hosted a working forum on February 11, 2015. Senator Ricardo Lara has introduced SB 4 – “Health for All”, to expand access to health care coverage for all Californians, regardless of immigration status. If members of this county were interested in becoming involved or wanted to learn more, Health Access will lead an effort to raise awareness around this issue.
 - Under the Affordable Care Act, the deadline for open enrollment with Covered CA is February 15, 2015. Residents are encouraged to obtain health insurance to avoid a penalty fee when filing their federal tax return.
4. Announcements:
 - Emergency Medical Care Committee (EMCC) created a workgroup to focus on sudden cardiac arrest, public access defibrillator programs throughout Yolo County, and a community education outreach campaign. There is also consideration to expand the Pulse Point AED App. There will be a presentation at the March 12, 2015 Health Council meeting regarding these efforts.
 - Tia Will will be stepping down from the Administrative team at Kaiser Permanente as of March 1, 2015. This may affect her membership with Council, but no decisions have been made by Kaiser at this time.

PRESENTATIONS

5. There were no presentations at this meeting

STANDING AGENDA ITEMS

6. Director & Health Officer Reports:
 - "Director of Health Services & Health Officer Reports to Health Council", see attachments "A" and "B"
7. Board of Supervisor's (BOS) Report:
 - January 27, 2015 the BOS approved expanding contracts with:
 - Psynergy Programs, Willow Glen Care Center, Cache Creek, and CommuniCare Health Centers to better meet the needs of their clients
 - February 10, 2015 approved Maddy Funds to Woodland Healthcare Foundation and Sutter Healthcare for their pediatric trauma and emergency services capabilities in the county.
 - February 3, 2015 held a Board Development Session
8. State and County Updates:
 - There was no report made at this meeting

NEW BUSINESS

9. Public Health Accreditation Update, *Emily Vaden*, see attachment "C"

UNFINISHED BUSINESS

10. There was no Unfinished Business

WORK GROUP DISCUSSION

11. Work Group Reports:

Elderly Fall Prevention:

- Is working to collect information which would identify some of the reasons elderly fall and potential prevention:
 - Data specific to the prevalence of falls
 - Geographic concentration
 - Identify tools that will assist in the screening of falls:
 - Self-assessment
 - Care providers, both formal and informal
 - Training to potentially influence clinical providers
 - Identifying models:
 - Community falls prevention program identified and will consider duplication
 - Create public health campaign and response

Immunization Rates:

- 2013-14 statistics on local school immunization rates are as follows:
 - Children entering kindergarten - 92%
 - Parent exemptions for personal belief - 4%
 - Overall immunized - 93%
 - Woodland - 98%
 - West Sacramento - 85%
 - Private Schools - 78%:
 - Davis Waldorf - 51%, efforts will be made to provide a presentation or coordinate an open forum for parents. Tia Will will write an article for the Davis Enterprise and the Vanguard Blog. Jan Babb will provide 2014-15 immunization data.

Teen/Young Adult Suicide Prevention:

- They will work in collaboration with Emily Vaden and the Healthy Yolo Workgroup in relation to their focus on mental health issues.

Oral Health (water fluoridation):

- There was no report at this meeting

ADJOURNMENT

12. Next meeting scheduled for: March 12, 2015
13. Attachments:
 - (A) Director of Health Services & Health Officer Reports to Health Council
 - (B) Yolo County Health and Human Services Agency – Draft Organizational Chart
 - (C) Healthy Yolo

Respectfully submitted by:



Traci Lucchesi, Secretary
Yolo County Health Council

Yolo County Health Council

Sign In Sheet

2/12/2015

	<u>Representatives</u>	<u>District</u>	<u>Signature</u>
1	Danny Sandoval	1	
2	Michael Wilkes	2	
3	Carri Ziegler	3	<i>Carri Ziegler</i>
4	Leslie Hunter	4	
5	Valerie Olson	5	<i>Valerie Olson</i>
6	David Naliboff	At-Large	
7	James Zuniga	At-Large	
8	Alicia Kelly		<i>Alicia Kelly</i>
9	Brenda Wright		
10	Dawn Myers Purkey		<i>Dawn Myers Purkey</i>
11	Jeneba Lahai		
12	John Tan		<i>John Tan</i>
13	Julie Gallelo		
14	Kim Deese		<i>Kim Deese</i>
15	Nathan Trauernicht		<i>Nathan Trauernicht</i>
16	Roger Clarkson		
17	Tawny Yambrovich		<i>Tawny Yambrovich</i>
18	Tia Will		<i>Tia Will</i>

394mg^u gail Lorenz

	<u>Alternate/Guest:</u>	<u>Organization</u>
19	<i>Traci Luachesi</i>	<i>DHS</i>
20	<i>Emily Henderson</i>	<i>BOS</i>
21	<i>Dawn</i>	
22	<i>JAN BABB</i>	<i>YC DHS</i>
23	<i>CJ Caldwell</i>	<i>YC DHS</i>
24	<i>Katy King - Goldberg</i>	<i>YCCA</i>
25		
26		
27		
28		
29		
30		
31		
32		
33		
34		
35		

Attachment "A"

February 12, 2015

Indigent Health:

- Enrollment Update (January 2015):
 - County Medical Services Program (CMSP) = 5
 - Partnership Health of California/Medi-Cal Managed Care = 47,081
 - Healthy Kids = 41

Budget Updates:

- County 2015-16 Budget Process to begin in February

Department Updates:

- Healthy Yolo Project:
 - Priority areas have been identified:
 - Chronic Disease Prevention, Mental Health; & Health Issues associated with Aging
 - Presented at ADMH and PH all staff meetings
 - Emily has been meeting with those internally who work on those issues
 - Next step is to form work groups and connect with steering committee
- Public Health Accreditation:
 - Deadline of 2/27 for all initial documentation submission
 - Emily is working to ID missing documents
- Quality Improvement (QI) Activities:
 - Phase 1 QI Trainings have concluded
 - Each program created a logic model and selected measures
 - Next stage is PDCA trainings to support QI projects (Feb- June 2015)
- Performance Management:
 - Measures identified in QI trainings are being organized in a performance management system this week
 - P&P to iron out details of reporting frequency is in the works

County Board of Supervisors Agenda Items:

February 10

- FY2014/15 County Mid-Year Budget Report
 - Indigent Health Budget Update
- Contracts
 - Sutter Healthcare and Woodland Healthcare Foundation – Pediatric Trauma Capabilities Expansion

February 24

- County SPIRIT Awards
- Family Resource Center 12 month sustainability initiative

February 12, 2015

Health & Human Services (HHS) Integration:

- Recruitment for Director of Health & Human Services position to be completed this month
- County Board of Supervisors received report and approved integration plan on January 27
- See ATTACHED organizational structure charts
- Phase II to begin on July 1, 2015

Health Officer Update:

Measles: California is in the midst of a multi-state measles outbreak with over 100 cases total and over 90 cases in California as of this writing. Most but not all cases are directly or indirectly linked to visits to Disneyland in mid-December. As of this writing, we have no confirmed cases of measles in Yolo County residents this year. Public Health receives measles updates from California Department of Public Health (CDPH) and Public Health is in contact with health care providers and school nurses. The vaccine for measles (MMR) is very safe and very effective, with 2 doses being 99% effective. MMR is available at regular Public Health Immunization Clinics on Monday afternoons.

Influenza: Influenza is still widespread in California and most of the nation. Please wash your hands often, cover your cough and stay home if you are ill. We know that both Influenza A and Influenza B are circulating in our community. Unfortunately the predominant strain of Influenza A this year is not a great match to the vaccine because of genetic drift that occurred after the vaccine was produced. There have been no influenza deaths in Yolo County residents under 65 years to date this season.

Ebola: There have been over 22,000 cases and almost 9,000 deaths from Ebola in Sierra Leone, Guinea and Liberia since the beginning of the current epidemic. However, in the past week there were fewer than 100 new cases diagnosed for the first time since June 2014. Travelers to the US from the 3 Ebola-affected countries continue to be monitored for 21 days by state or local health departments. There are no current cases of Ebola in California.

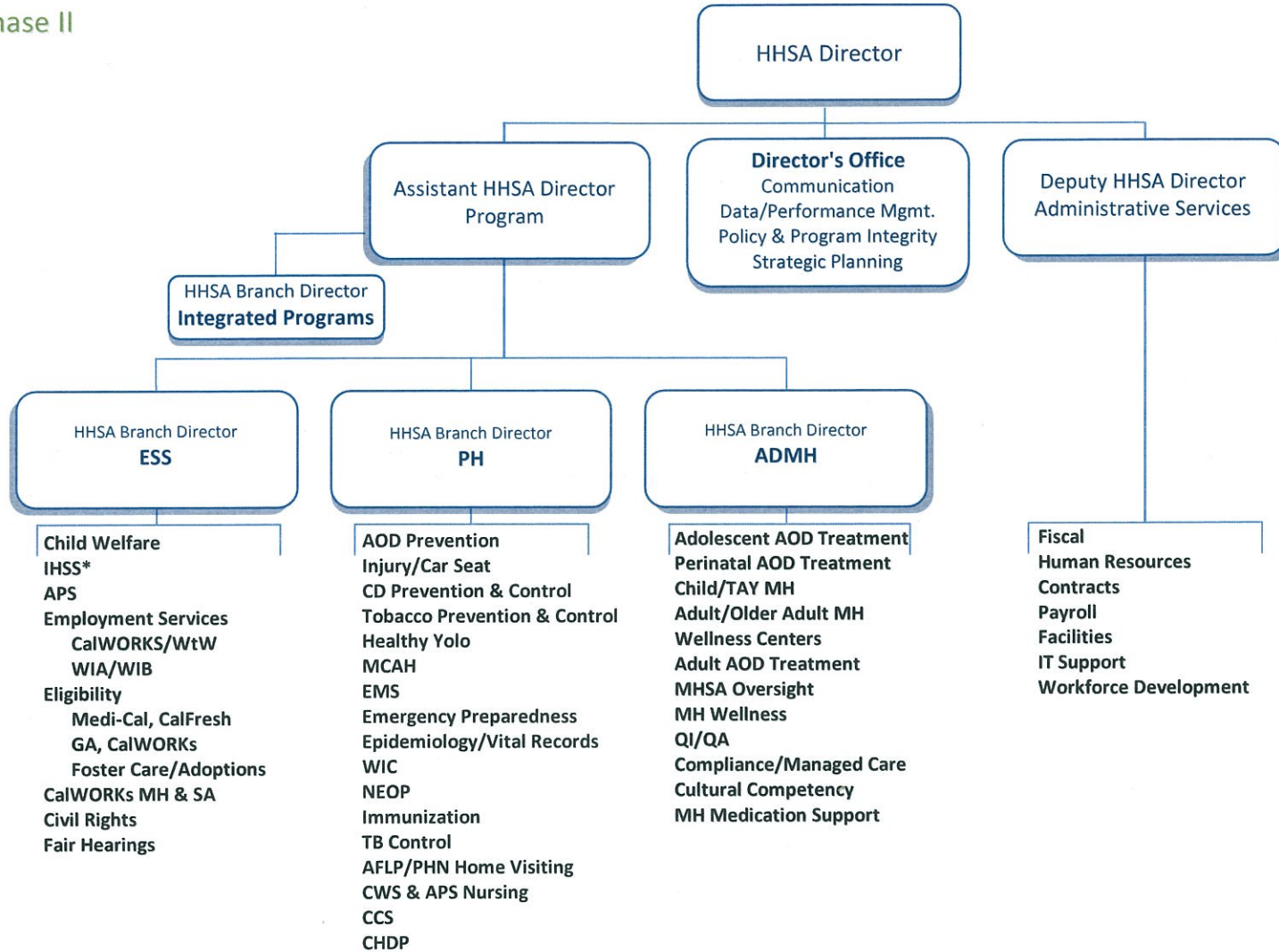
E-cigarettes: On January 28, 2015, CDPH issued a Health Advisory and a State Health Officer's Report warning of the dangers of e-cigarettes. This report is available on the CDPH website.

Attachment "B"

Yolo County Health and Human Services Agency

Draft Organizational Chart

Phase II



Abbreviation Key:

AA = Adult & Aging
 BOS = Board of Supervisors
 CWS = Child Welfare Services
 EW = Eligibility Worker
 HR = Human Resources
 MCAH = Maternal, Child & Adolescent Health
 PA = Physical Activity
 QI = Quality Improvement
 TB = Tuberculosis

ADMH = Alcohol, Drug and MH
 CCS = California Children's Services
 CYF = Child, Youth & Family
 FY = Fiscal Year
 IHSS = In-Home Supportive Services
 MDT = Multi-Disciplinary Team
 PH = Public Health
 RFP = Request for Proposal
 WIA = Workforce Investment Act

AFLP = Adolescent Family Life Program
 CD = Communicable Disease
 DMC = Drug Medi-Cal Certification
 GA = General Assistance
 IP = Integrated Programs
 MH = Mental Health
 PHN = Public Health Nurse
 SA = Substance Abuse
 WIB = Workforce Investment Board

AOD = Alcohol & Other Drugs
 CHDP = Child Health & Disability Prevention
 EMS = Emergency Medical Services
 HIPAA = Health Insurance Portability & Accountability Act
 IT = Information Technology
 MHSA = Mental Health Services Act
 P&P = Protocol & Procedure
 SMI = Seriously Mentally Ill
 WIC = Women, Infant and Children

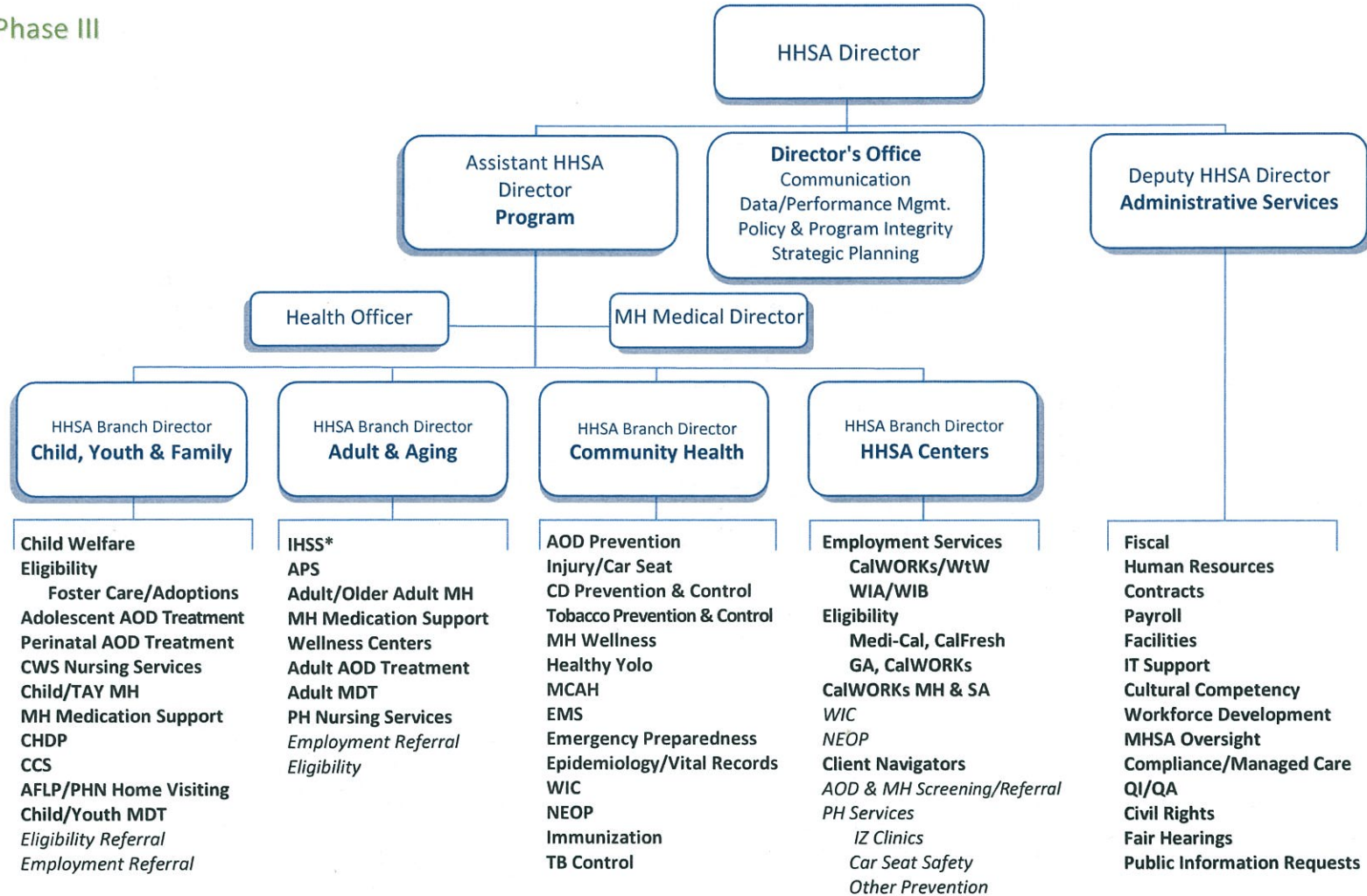
APS = Adult Protective Services
 CHS = Drug Medi-Cal Certification
 ESS = Employment and Social Services
 HO = Health Officer
 IZ = Immunization
 NEOP = Nutrition Education & Obesity Prevention
 QA = Quality Assurance
 TAY = Transitional Age Youth
 WtW = Welfare to Work

*The Public Authority reports to the Board of Supervisors, but has strong collaborative relationships with the IHSS Program, and is co-located with its staff.

Yolo County Health and Human Services Agency

Draft Organizational Chart

Phase III




BOLD reflects Core Programs within this Branch. *ITALICS* reflect Supplemental Program/Service in this Branch, reports to another Branch.

*The Public Authority reports to the Board of Supervisors, but has strong collaborative relationships with the IHSS Program, and is co-located with its staff.

Attachment "C"

HEALTHY YOLO



Our Community Our Future

WWW.HEALTHYYOLO.ORG

EMILY VADEN, MPH
ACCREDITATION COORDINATOR/QI LEAD
YOLO COUNTY DEPARTMENT OF HEALTH SERVICES

HEALTHY YOLO PURPOSE



Improve Community Health




CHA: HEALTH ISSUES OF CONCERN

Yolo County			
Health Issues that Most Affect Our Community	#	%	Rank
Obesity	375	14%	1
Mental health issues	287	11%	2
Diabetes	272	10%	3
Health Problems assoc. with Aging	254	9%	4
Cancer	244	9%	5
Alcoholism	227	8%	6
Heart Disease	183	7%	7
Dental Problems	134	5%	8
Child abuse and neglect	134	5%	8
Teenage pregnancy	105	4%	10

900 Responses. 2,679 health issues selected



WHERE WE ARE NOW



Our Community, Our Future

WHERE WE'RE GOING



FOR MORE INFORMATION:

HEALTHYYOLO.ORG
EMILY.VADEN@YOLOCOUNTY.ORG