



# COUNTY OF YOLO

Office of the County Administrator

*Patrick S. Blacklock*  
County Administrator

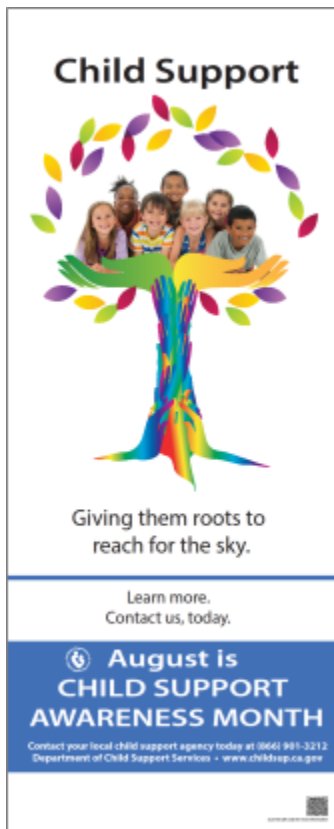
Beth Gabor  
Manager of Operations & Strategy

625 Court Street, Room 202 • Woodland, CA 95695  
(530) 666-8042 • FAX (530) 668-4029  
[www.yolocounty.org](http://www.yolocounty.org)

**FOR IMMEDIATE RELEASE**  
July 28, 2015

Contact: Beth Gabor, Public Information Officer  
(530) 666-8042 [w] • (530) 219-8464 [c]

## August is Child Support Awareness Month



(Woodland, CA) – August is Child Support Awareness month, reminding parents that child support is crucial to the financial security and well-being of approximately 8,000 children and families in Yolo County.

“Children are the best part of ourselves – the sum of our past and the promise of our future, the guarantee that our lives and values and dreams will flourish long after we are gone.” With that statement, then President Bill Clinton made an official proclamation in 1995 that recognized the month of August as Child Support Awareness Month.

Children grow and thrive with the commitment of family to provide for their emotional and physical needs, as well as opportunities for enriching their minds. This is especially important when a family’s structure changes. For 1.3 million children in California, meeting those needs requires the commitment of child support professionals throughout the state.

Child Support Awareness Month is a time to salute parents who work hard to ensure their children grow up in stable homes and look forward to a bright future. It is also a time to help remind parents who are not always present that they are an important part of their children’s lives.

The mission of the Yolo County Department of Child Support Services is to enhance the well-being of children and the self-sufficiency of families by providing child support services to anyone who wants or needs them. The department is a neutral agency and does not represent either parent, but instead works to ensure that the child’s best interests are met in terms of financial support. Last year, the department collected close to \$13 million in child support. Statewide, local child support agencies collected and distributed more than \$2.3 billion on behalf of 1.3 million children and families that participate in the California Child Support Program.

“Children who receive support from both parents tend to do better in school and tend to have fewer behavioral problems throughout their lives,” said Yolo County Department of Child Support Services Director Natalie Dillon. “This support comes in many forms; emotional, mental and financial.”

General information about California’s Child Support Services Program is available at: [www.childsup.ca.gov](http://www.childsup.ca.gov) and over the phone 1-866-901-3212. General information about the Yolo County Department of Child Support Services is available at: [www.yolocountychildsupport.org](http://www.yolocountychildsupport.org).

###