



This document outlines the planning and organizational responsibilities of the Public Health and Medical (ESF #8) coordinating agencies for the Yolo Operational Area

Yolo Operational Area Public Health and Medical Executive Summary

Emergency Support Function
#8 - Annex to local Emergency
Operations Plans

Version 1.0

September 2015

PARTICIPATING AGENCIES



HANDLING INSTRUCTIONS

1. The title of this document is the *Yolo County Public Health and Medical (ESF #8) Annex Executive Summary*
2. The information gathered herein is to be used for training and reference purposes within the Yolo Operational Area. Reproduction of this document, in whole or in part, without prior approval from the Yolo County Office of Emergency Services is prohibited.
3. Point of Contact:

Yolo County Office of Emergency Services

DANA M. CAREY

OES Coordinator
625 Court Street, Room 202
Woodland, CA 95695
Office: 530-666-8150
Direct: 530-406-4933
dana.carey@yolocounty.org

This page intentionally blank

CONTENTS

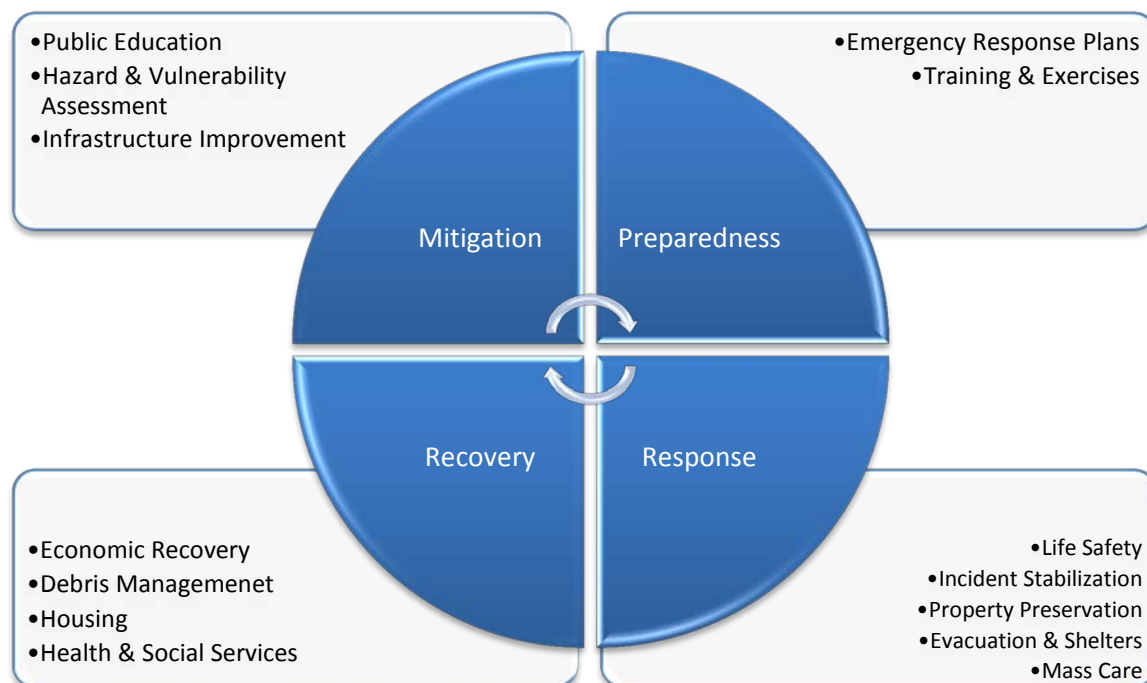
Participating Agencies.....	1
Handling Instructions.....	3
Contents.....	5
Introduction.....	7
Overview.....	7
Purpose.....	8
Scope.....	8
Goals.....	10
Annex Maintenance and Administration.....	10
Stakeholders.....	11
Lead Coordinator.....	11
Supporting Agencies and Departments.....	12
State Agencies.....	14
Federal Agencies.....	15
Concept of Operations.....	16
Mitigation.....	16
Preparedness.....	16
Response.....	17
Recovery.....	18
Appendix A: Yolo Operational Area Planning Groups.....	19
Appendix B: Documentation Maintenance Responsibilities.....	21
Appendix C: Acronyms.....	24
Appendix D: Version History.....	25

This page is intentionally blank

INTRODUCTION

OVERVIEW

The *Yolo County Operational Area Public Health and Medical (ESF #8)* represents an alliance of discipline-specific stakeholders who possess common interests and share a level of responsibility to provide emergency management related services regarding public health and medical system includes a broad array of local, state, tribal and federal governmental entities; non-governmental and community-based organizations (NGO/CBOs); and the private healthcare sector. In addition, ESF #8 brings together these stakeholders before, during and after emergencies to develop systems and processes that support effective emergency management in the Yolo Operational Area. The function #8 stakeholders will work together within their statutory and regulatory authorities to effectively and efficiently coordinate during all four phases of emergency management.



The Yolo County Public Health & Medical planning group¹ supports and coordinates the Operational Area’s activities of its stakeholders with a role to protect Public Health and Medical from All-Hazards, such as:

- Yolo County Health Council
- Emergency Medical Care Committee
- HPC - Healthcare Preparedness Coalition
- Hospital Preparedness Program
- Jail Medical Care
- Communicable Diseases
- Provider Stakeholder Workgroup

¹ See [Appendix A](#) for an overview of all planning groups within the Yolo Operational Area

- County Correction Partnership (Meetings)
- PAC - Physician Advisory Committee
- SAS MAP - Sacramento Area Skilled Nursing Facility Mutual Aid Program
- EPC - Emergency Preparedness Coordinators Meeting
- Region IV MHMAAC Meetings
- EMSA/LEMSA meetings

The *Yolo County Public Health and Medical (ESF #8)* is an annex to the County of Yolo Emergency Operations Plan (EOP), City of Davis EOP, City of West Sacramento EOP, City of Winters EOP, City of Woodland EOP, and the Yocha Dehe Wintun Nation EOP. The purpose of the annex is to define the scope of Function #8 and the emergency management activities of its stakeholders. The development of Function #8 will be a continuous process that will take time, resources and consensus building. Plans within the annex will be maintained to reflect inclusion of additional stakeholders, the expansion of resources and capabilities, or the revision of policies and procedures.

A Public Health and Medical response is complex and involves many jurisdictions and agencies. It can also span several different response plans and traverse jurisdictional boundaries. Multiple plans maintained throughout the County may be used depending on the specific area or population in question. See the attached listing of plans produced and maintained by Public Health.

PURPOSE

The purpose of Function #8 is to organize stakeholders with responsibilities to strengthen collaboration and coordination among public health, environmental health and medical stakeholders that have the legal authorities, resources and capabilities to support local jurisdictions during emergencies that affect public health and/or medical services, and by so doing, save lives, protect health and safety, and preserve the environment into a coordinated response.

SCOPE

The plans and systems that make-up the Function #8 Annex may be activated in whole or in part as described in the Department of Health Services Operations Plan and/or in response to a request for support. A Yolo County response to protect Public Health and Medical may also be carried out under other key response authorities identified in plans identified in this Executive Summary.

The scope of Function #8 includes the appropriate actions to prepare for and respond to a threat to Public Health and safety caused by an emergency or disaster and are detailed below. The plans and actions that make up this annex will require coordination among multiple Emergency Support Functions.

- Provides an overview of the public health and medical system in Yolo County
- Identifies the legal basis for the ESF 8 Annex and the emergency management activities of ESF 8 stakeholders
- Identifies the ESF 8 mission, scope, goals, and stakeholder community
- Identifies the organizational structure and governance system for ESF 8 development, implementation and maintenance
- Provides an overview of activities that support the four phases of emergency management

During an emergency response, county departments and agencies retain their respective

administrative authorities, but coordinate within the ESF 8 structure in order to uphold the mission of protecting life, property and the environment. ESF 8 stakeholders are involved in a wide spectrum of activities involving public health, communicable diseases, emergency medical services, emergency response, mental health and health care delivery as identified in the table below.

Public Health and Medical Activities
<p>Communicable Disease</p> <ul style="list-style-type: none"> • Epidemiology and Surveillance • Zoonotic Veterinary Disease Surveillance • Assist UC Davis Veterinary Hospital with infectious diseases at the Veterinary Medical School
<p>Drinking Water</p> <ul style="list-style-type: none"> • Work with Environmental Health on drinking water issues
<p>Emergency Medical Services</p> <ul style="list-style-type: none"> • Patient Movement, Evacuation, Distribution and Tracking • Field Disaster Services (e.g., Field Treatment Services, Ambulance Strike Teams) • 911 and Dispatch Centers • Medical and Health Operational Area Coordinator (MHOAC) Role
<p>Food and Agricultural Safety and Security, in collaboration with ESF 11 (Food and Agriculture)</p> <ul style="list-style-type: none"> • Foodborne Epidemiology • Product Trace-Backs
<p>Hazardous Materials relative to health and safety with ESF 10 (Oil and Hazardous Materials)</p> <ul style="list-style-type: none"> • Airborne, Biological, Chemical, Radiological, Nuclear
<p>Laboratories</p> <ul style="list-style-type: none"> • Laboratory Networks (work with joint Solano, Napa, Marin and Yolo County lab located in Solano County) • Testing and Reporting • Laboratory Surge
<p>Healthcare Facility Safety</p> <ul style="list-style-type: none"> • Sign off on facility safety plans in coordination with State Licensing and Certification • Healthcare Preparedness Coalition Safety Training (Active Shooter)
<p>Patient Care</p> <ul style="list-style-type: none"> • At Risk Populations/Persons with Access and Functional Needs • Mental/Behavioral Health • Emergency Licensure and Resolution of Licensing Issues • Medical Support to General Population Shelters in Coordination with the Mass Care and Shelter Emergency Function (ESF 6) • Medical Surge, including Facility Expansion and Government Authorized Alternate Care Sites
<p>Mass Fatality Management (public health and medical issues in coordination with law enforcement/coroner)</p> <ul style="list-style-type: none"> • Yolo County Coroner
<p>Non-Personnel Resources (e.g., supplies, equipment, pharmaceuticals, vehicles)</p> <ul style="list-style-type: none"> • In-county resources only
<p>Public Information and Risk Communication relative to health and medical issues</p> <ul style="list-style-type: none"> • Maintenance CERC
<p>Safety and Security of Drugs, Biologics, and Medical Devices</p>
<p>Blood, Organs, and Blood Tissues</p>

Public Health and Medical Activities
<ul style="list-style-type: none"> Blood Source Coordination of Donations Promote Yolo County Blood Supply levels
Subject Matter Expertise and Technical Assistance associated with exercising statutory/regulatory responsibilities or providing support to the emergency management community relative to health and medical issues
Vector Control <ul style="list-style-type: none"> Coordination with Sacramento – Yolo Mosquito and Vector Control District
Healthcare Volunteers and Healthcare Personnel Resource Management <ul style="list-style-type: none"> Disaster Health Care Volunteers
Wastewater and Solid Waste Disposal <ul style="list-style-type: none"> Coordination with Environmental Health
Medical Waste Management
First Responder and Healthcare Provider Safety, in coordination with the California Occupational Safety and Health Administration <ul style="list-style-type: none"> Guidelines for pre-hospital PPE, Health Concerns

GOALS

This section identifies the goals for the Public Health & Medical planning group to support the further development and ongoing maintenance of emergency support function #8 over the coming years.

- Prepare for and prevent, cohesively respond to, and effectively mitigate and recover from the effects of an emergency to the Public Health and Safety of populations in Yolo County.
- Integrate and standardize function #8 emergency management activities within SEMS/NIMS.
- Proactively develop and support mutual aid and other forms of assistance.
- Implement improvements to the Operational Area’s Public Health and Medical response capabilities.
- Identify, coordinate, and engage the Operational Area’s emergency function #8 stakeholders.
- Train and exercise the activities of function #8.
- Provide input and planning assistance for any Hazard specific annexes developed which contain Public Health and Medical elements and coordinate the MOHOAC role.

ANNEX MAINTENANCE AND ADMINISTRATION

Various members are responsible for the on-going maintenance and administration of function #8 plans, Field Operations Guides, Standard Operating Procedures, resource directories, exercises, etc., these are outlined in [Appendix B](#).

STAKEHOLDERS

LEAD COORDINATOR

For the development of the Operational Area level a lead agency has been designated based upon authorities and responsibilities. The lead agency is responsible to facilitate the development, maintenance, and implementation of function #8, with input and assistance from the stakeholders. For the purposes of function #8, the lead agency is **Yolo County Department of Health Services**, there are other individuals by title that have specific authorities such as:

- Public Health Officer or designee
- MHOAC
- Alcohol Drug and Mental Health (ADMH) Medical Director

Yolo County Department of Health Services is responsible for:

- The management oversight of function #8 including:
 - Identification of subject matter experts
 - Establishing communications and sharing information with function #8 stakeholders
- Contributes authorities, expertise and resources to the function #8 stakeholder response
- Provides the leadership, ongoing communication, coordination, and oversight for the function throughout all phases of emergency management
- Provide subject matter expertise and/or access to public health and medical resources and capabilities
- Identify and engage stakeholders in the development, implementation and maintenance of function #8
- Continued support of function #8 Advisory committees such as the Health Council, EMCC and HPP.
- Support the development, implementation and maintenance of the function #8 Executive Summary
- Support the identification of stakeholder authorities to support function #8 activities
- Support the development of a resource and capability directory among function #8 stakeholders
- Support education, training and exercises involving the plans and procedures described in the function #8 Executive Summary
- Support after action reports and implement corrective actions to strengthen function #8 plans and procedures

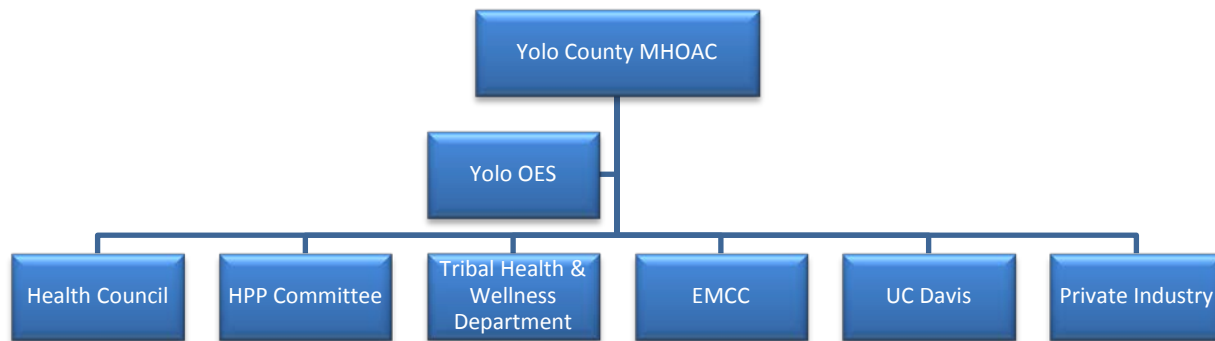
- Support the understanding that ESF 8 is an alliance of public health and medical stakeholders that does not alter the legal authorities and responsibilities of individual stakeholders

The Function Coordinator, designated by the Yolo County Department of Health Services Director, facilitates consistency among stakeholders and can provide general information regarding the breadth of capabilities among function #8 stakeholders. During an emergency response, the Coordinator can serve as an information “broker” between the stakeholders and the Emergency Operations Center. The Coordinator provides information regarding the capabilities and activities of primary and supporting agencies and helps direct questions and issues to the appropriate agency.

SUPPORTING AGENCIES AND DEPARTMENTS

Other agencies and departments that play roles in both regulatory and response operations assist in the development of function #8. These supporting stakeholders have responsibilities in assisting the coordination of all phases of emergency management. Local, state, and federal resources provide key support to function #8. The specific responsibilities of supporting agencies may be articulated within the agencies’ administrative orders, agency plans, documents, or Standard Operating Procedures (SOPs).

Department/Agency	Division/Group	Responsibility
Yolo County EMS Agency	Yolo County EMS Agency	<ul style="list-style-type: none"> Coordinates medical and hospital preparedness locally
Yolo County Health & Human Services Agency	Public Health Emergency Preparedness Division	<ul style="list-style-type: none"> Responds to medical disasters by coordinating mutual aid resources Administers and coordinates disaster-related public health programs and assesses hazards to the public's health Conduct surveillance of infectious diseases to prevent and control disease outbreaks Assesses health, safety, emergency preparedness and response plans for healthcare facilities Reports the safety of drinking water supplies Assesses potential health effects, recommends protective measures and drafts measures to protect public from chemical, biological, radiological and nuclear incidents Serves as the Medical and Health Operational Area Coordinator and has reporting requirements to the California Department of Public Health under Health and Safety Code 1797.153. Determines the public risk and impact, if any, of an animal disease emergency. Provides public information regarding the public health effects of the disease outbreak or control measures and potential preventive strategies.
Yolo County Health & Human Services Agency	Employment & Social Services, Medi-Cal Division	<ul style="list-style-type: none"> Ensures that Medi-Cal enrollees continue to receive medical care in the event of a disaster Assesses whether there is a need to modify or waive Medi-Cal eligibility requirements in the affected area Facilitates payments to Medi-Cal providers and rural primary care clinics to ensure their continued ability to provide care Ensure that public health and emergency medical concerns and needs in shelter populations are addressed Collaborates with Department of Health Care Services Medi-Cal program to ensure that enrollees retain coverage and provide health insurance information to those impacted by disaster
Yolo County Administration Office	Operational Area Office of Emergency Services (OES)	<ul style="list-style-type: none"> Function #8 Executive Summary maintenance & updates. Serves as the primary coordinating agency for Operational Area Emergency Management. Assists in obtaining a Local Emergency Proclamation and request of a Governor's Proclamation of a State of Emergency, USDA Secretarial Disaster Designation, and SBA and Presidential Disaster Declaration, if deemed appropriate. Assists in obtaining resources from supporting county departments.
Yocha Dehe Wintun Nation	Health & Wellness Department	<ul style="list-style-type: none"> Provides tribal members and staff with health education materials, comprehensive physical and mental health reference guides, health classes, flu clinics, mental health services, health and safety information and protocols, as well as individual and family case management



Stakeholder Relationships

STATE AGENCIES

The role of the State Agencies will be dependent upon the specific nature of the emergency including the scope of the response and recovery activities, and whether the incident affects the inland or coastal zone, on state streets, highways, or state-owned buildings or grounds. Supporting State Agencies are those who can provide technical, policy, and subject matter expertise, and are generally requested by stakeholder agencies or the Lead Coordinator(s) during an incident. Two State Agencies pre-identified as necessary coordinating agencies include:

California Department of Public Health (CDPH)

The CDPH is the lead state agency for public health surveillance and response to public and environmental health emergencies, including incidents or threats involving bioterrorism. The CDPH advises all local health authorities, and is required to control and regulate the actions of Operational Area health officers when, in its judgment, the public health is jeopardized. However, the primary responsibility for the response to an outbreak of disease rests with public health officers. Public health officers must, nonetheless, respond to any request from the CDPH for reported information, and must also report a local epidemic to the agency. The CDPH has the power to govern the actions of public health officers through its orders, rules, and regulations, and to require them to enforce all CDPH orders, rules, and regulations, which generally set minimum measures. Public health officers may take more stringent measures where circumstances require.

California Emergency Medical Services Authority (EMSA)

- EMSA is the lead state agency for disaster medical response. EMSA also supports the CDPH response to public and environmental health emergencies. As described in the California Medical Mutual Aid Plan, EMSA:
- Maintains the California Medical Mutual Aid Plan for coordinating statewide emergency medical resources
- Maintains the California Disaster Medical Response for the use and dispatch of EMSA-employed or coordinated personnel, apparatus, and other medical resources, as necessary
- With CDPH, organizes, staffs, and equips the SOC, the JEOC, and alternate facilities necessary to ensure effective statewide coordination and control of mutual aid medical operations
- Monitors ongoing emergency situations, anticipates needs, and prepares for use of inter-regional medical mutual aid resources, establishing priorities, and authorizing dispatch
- Monitors and coordinates backup emergency medical coverage between regions when there is a shortage of resources

- Coordinates disaster medical mutual aid operations throughout the state
- Assists with coordinating the application and use of other state agency resources.

EMSA may coordinate the deployment of:

- California Disaster Medical Assistance Teams (CAL-MATs)
- Mission Support Teams
- California Medical Volunteers
- Disaster Healthcare Volunteers
- Ambulance Strike Teams
- Mobile field hospitals²

Additional State agencies providing input and support into the Yolo function #8 planning and response efforts include:

Laboratory Response Network

A network of laboratories in California supports the public health system. The state's laboratory at Richmond, which the CDPH manages, provides services for communicable diseases, genetic diseases, environmental health, vector control, and sanitation radiation. The state laboratory is a component of the Laboratory Response Network – a national network of local, state, and Federal public health, food testing, veterinary diagnostic, and environmental testing laboratories that provide the infrastructure and capacity to respond to biological and chemical terrorism and other public health emergencies. The Laboratory Response Network, which the CDC manages, comprises more than 150 laboratories affiliated with Federal agencies, military installations, international partners, and state and local public health departments. There are thirty-seven county public health laboratories in California; of these facilities, fourteen are Laboratory Response Network reference laboratories.

UC Davis Medical

A major academic health center located in Sacramento, California and affiliated with the UC Davis campus in Yolo.

FEDERAL AGENCIES

The National Response Framework (NRF) organizes federal resources and capabilities under 15 Emergency Support Functions (ESF). ESFs have been developed and organized for the purpose of providing federally controlled resources to state and federal agencies during the response and recovery phases of a disaster or large scale emergency. The interplay of ESF 8 and the Public Health and Medical public and private sector stakeholders is a vital part of including whole community concepts into an all phases of emergency management. Some of the following stakeholders work closely with ESF #8 on a regular basis and include the following:

- California Conference of Local Health Officers
- California Association of Health Care Facilities
- Walgreen's
- Raley's

² Refer to the California Disaster Medical Response Plan for details regarding these resources.

CONCEPT OF OPERATIONS

This section describes the function #8 concept of operations, which documents how the emergency function stakeholders will, through collaboration and joint activities, support each phase of emergency management.

MITIGATION

Mitigation is the effort to reduce loss of life and property by lessening the impact of disasters. This is achieved through risk analysis, which results in information that provides a foundation for mitigation activities that reduce risk. Mitigation activities for function #8 include:

- Identify stakeholders and engage them in the development and maintenance of the Yolo Operational Area Multi-jurisdictional Hazard Mitigation Plan.
- Complete a vulnerability assessment and prioritize actions to reduce vulnerabilities within the scope of Yolo Operational Area Multi-jurisdictional Hazard Mitigation Plan.
- Develop strategies and processes to prevent or reduce the impact of events and reduce the need for response activities and include in the 5-year updates/revisions of the Yolo Operational Area Multi-jurisdictional Hazard Mitigation Plan.
- Collaborate to pool function #8 resources to prevent hazards and reduce vulnerability (leveraging funding, resources and people).
- Coordinate with the Yolo County Office of Emergency Services

PREPAREDNESS

Preparedness is a continuous cycle of planning, organizing, training, equipping, exercising, evaluating and taking corrective action in an effort to ensure effective coordination during incident response. Preparedness Activities for function #8 include:



- Develop and maintain the Yolo County ESF #8 Annex, the overall Emergency Operations Plans containing a concept of operations, plans, supporting documents and agreements.
- Identify stakeholder roles, responsibilities and statutory authorities.
- Initiate and oversee pre-emergency planning and coordination activities.
- Conduct resource inventories, categorize resources, establish agreements for acquiring needed resources, manage information systems, and develop processes for mobilizing and demobilizing resources with the function #8 stakeholders.

- Plan for short-term and long-term emergency management and recovery operations.
- Integrate After Action Reports (AAR) and Corrective Action/Improvement Planning (CAP/IP) into the function #8 exercise process.
- Conduct regular function #8 meetings and assist with training events.
- Support coordination for incident prioritization, critical resource allocation, integration of communications systems and information coordination.
- Create an Emergency Resource Directory providing the list of function #8 resources necessary to support operations and begin to identify and document resource types.
- Create inventory agreements that are in place to support sharing of resources.
- Assists with the documentation of how function #8 members communicate during an emergency, including primary and secondary systems and system redundancy.

RESPONSE

Response includes activities that address the direct efforts of an incident. Response includes the execution of emergency operations plans and mitigation activities outlined to limit the loss of life, personal injury, property damage and other unfavorable outcomes. Response activities for function #8 include:

- The function #8 coordinator provides subject matter recommendations and guidance involving its members.
- Coordinates assistance from support agencies and provides assistance within other EOC levels (as necessary).
- Provides guidance and recommendations in resource request processing to EOC Sections to ensure the appropriate use of resources.
- Acquires and processes discipline-specific intelligence and information.
- Identifies and documents trigger points/thresholds that may indicate a need to increase the operational mode.
- Documents how stakeholders mobilize resources to support incident response and operations. Also assists with the tracking of resources during mobilization and demobilization.
- Documents how function #8 organizes itself to support the emergency response within the Standardized Emergency Management System (SEMS).
- Participates in Action Planning, section and branch meetings scheduled during the operational period within the EOC.
- Actively coordinates with function #8 stakeholders at other locations on incident response activities, consistent messaging, and technical assistance.

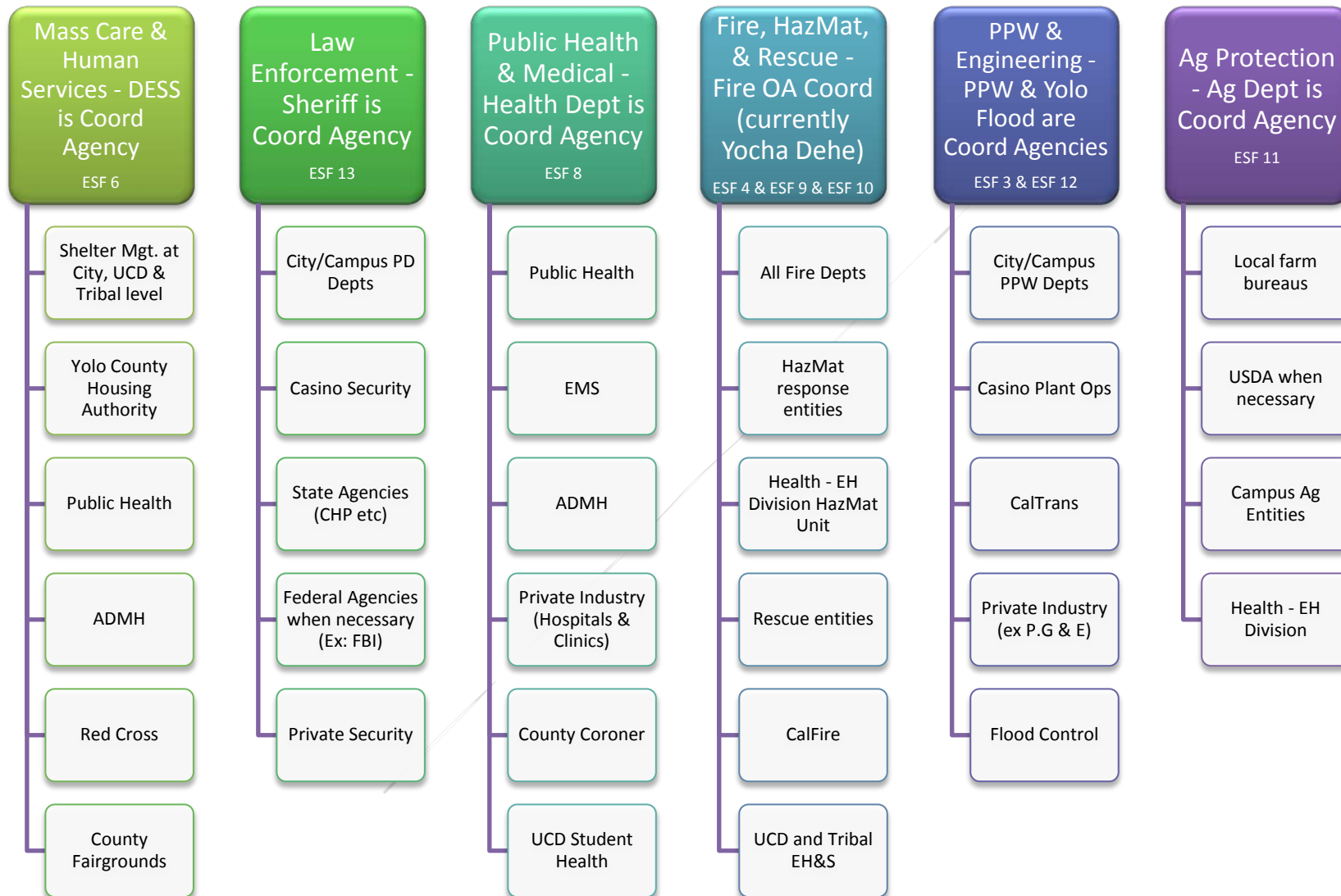
- Acts as a conduit of information from the function #8 stakeholders to the EOC regarding stakeholder's intelligence and resource capabilities.

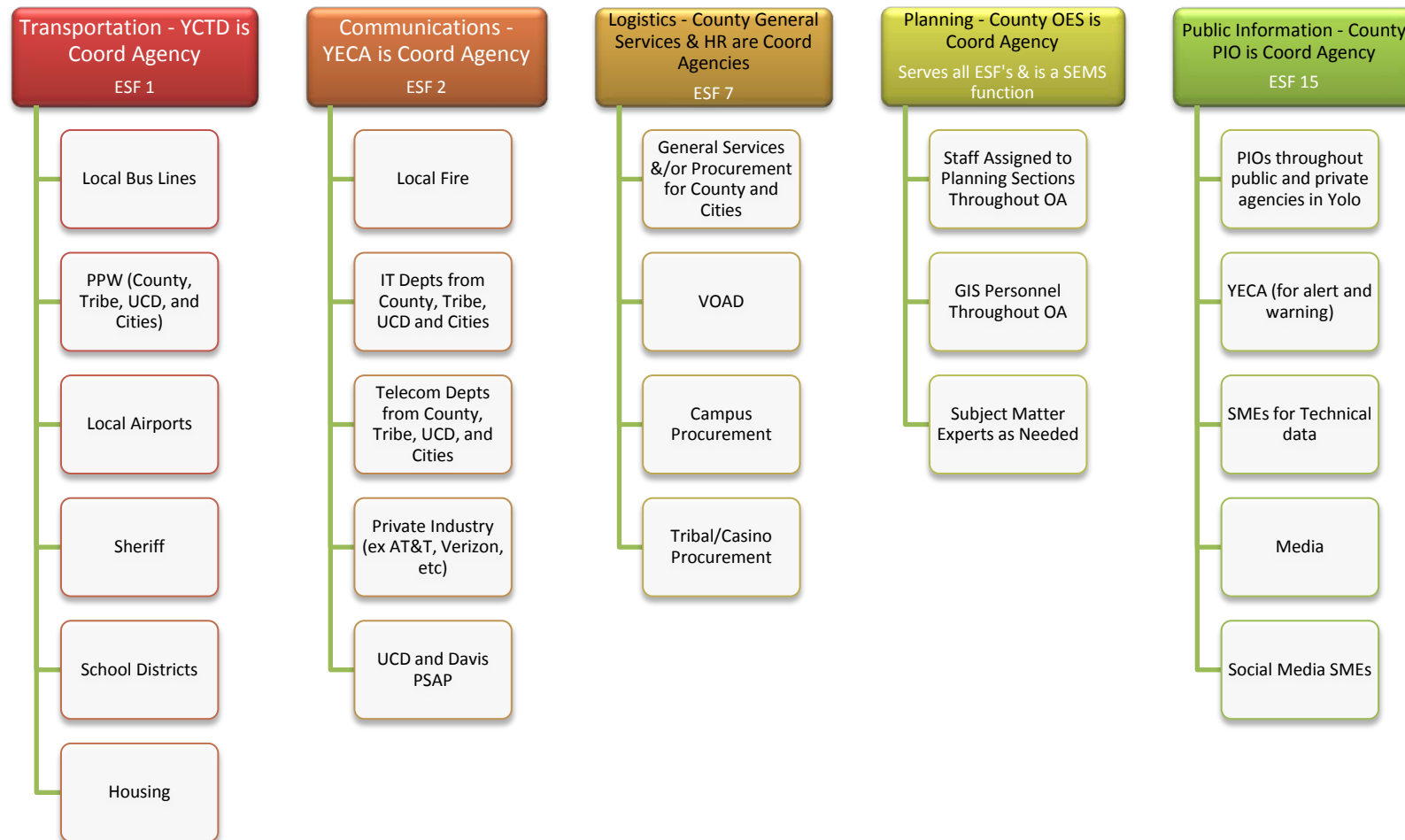
RECOVERY

The aim of the recovery phase is to restore the affected area to its pre-disaster state. It differs from the response phase in its focus; recovery efforts are concerned with issues and decisions that must be made after immediate needs are addressed. Recovery activities for include:

- Supporting recovery activities with roles and responsibilities of Emergency Support Function stakeholders.
- Working with other function #8 stakeholders to prevent duplication of efforts.

APPENDIX A: YOLO OPERATIONAL AREA PLANNING GROUPS





ESF5 is satisfied by OES involvement in all other ESF planning aspects & ESF 14 is satisfied by the recovery planning within each ESF.

APPENDIX B: DOCUMENTATION MAINTENANCE RESPONSIBILITIES

Plan/Document Name	Description	Emergency Management Phases	Owner	Last Updated
<i>Yolo County Operational Area Public Health and Medical (ESF #8) Annex Executive Summary</i>	Overview of Function #8 for the Yolo Operational Area	Preparedness	Yolo County OES	September 2015
<i>Emergency Operations Plan (Health)</i>	Outlines the overall response of the Dept of Health Services to a Public Health Emergency.	Preparedness Response	Public Health Emergency Preparedness Division	Sept 2013
<i>Alternate Care Site Plan</i>	Operational plan, which outlines the process for setting up an alternate care site.	Preparedness Response	Public Health Emergency Preparedness Division	June 2014
<i>Epidemiologic Response Plan</i>	Outlines the role of the Yolo County Health Department in response to outbreaks/epidemics, pandemics, sentinel disease events and other public health emergencies.	Preparedness Response	Public Health Emergency Preparedness Division /CD team	July 2012
<i>Pan Flu Response Plan</i>	Defines the role of the Yolo County Health Department in response to a Pandemic Flu Outbreak.	Preparedness Response	Public Health Emergency Preparedness Division /IZ Team	Sept 2014

Plan/Document Name	Description	Emergency Management Phases	Owner	Last Updated
<i>MHOAC SOP</i>	Operating procedure, which defines the role of the Medical Health Operational Area Coordinator.	Preparedness Response	EMS	Aug 2014
<i>Continuity of Operations Plan/Continuity of Government</i>	Plans for the continuation of government operations.	Preparedness Response	Public Health Emergency Preparedness Division	July 2013
<i>Health Volunteer Administration Plan</i>	Guide to integrating volunteers into health operations.	Preparedness Response	Public Health Emergency Preparedness Division	Jan 2012
<i>Medical Health Tiered Surge Response Plan</i>	Provides a framework for the management of medical surge needs.	Preparedness Response	Public Health Emergency Preparedness & EMS Division	April 2012
<i>CHEMPACK</i>	Operational plan, which defines the County's role in coordinating anti-nerve agents.	Response	Public Health Emergency Preparedness Division	March 2012
<i>Biohazard Detection System Plan</i>	Operational plan, which defines the County's role in a response to Anthrax.	Response	Public Health Emergency Preparedness Division	Sept 2006
<i>Ebola Plan</i>			EMS	Oct 2014
<i>First Responder SOP</i>	Operational guide to mass prophylaxis and mass vaccination of first responders.	Response	Public Health Emergency Preparedness Division	April 2013

Plan/Document Name	Description	Emergency Management Phases	Owner	Last Updated
<i>Mass Prophylaxis SOP</i>	Operational guide to mass prophylaxis and mass vaccination.	Response	Public Health Emergency Preparedness Division	April 2013
<i>SNS Plan</i>	Operational plan, which defines the County's role in a deployment of the Strategic National Stockpile.	All	CRI/ Public Health Emergency Preparedness Division	April 2013
<i>Trauma Plan</i>			EMS	April 2014
<i>EMS Plan</i>			EMS	April 2015
<i>CFMG Policy and Procedure Manual Yolo County Adult Detention Facilities</i>			CD Team/ IZ	Sept 2014
<i>CFMG Policy and Procedure Manual Yolo County Juvenile Hall Facilities</i>			CD Team/ IZ	Sept 2014

APPENDIX C: ACRONYMS

AAR – After Action Report

ADMH – Alcohol Drug & Mental Health

CAP – Corrective Action Plan

DESS – Department of Employment and Social Services

EMS – Emergency Medical Services

EOC – Emergency Operations Center

EOP – Emergency Operations Plan

ESF – Emergency Support Function

NRF – National Response Framework

NIMS – National Incident Management System

OES – Office of Emergency Services

OA – Operational Area

PHEP – Public Health Emergency Preparedness

PPW&ES – Planning, Public Works & Environmental Services

SEMS – Standardized Emergency Management System

SOP – Standard Operating Procedures

UCD – University of California Davis

YDWN – Yocha Dehe Wintun Nation

YECA – Yolo Emergency Communications Agency

APPENDIX D: VERSION HISTORY

(Note: File each revision transmittal letter behind this record page.)

Change Number	Section	Date of Change	Individual Making Change	Description of Change
0.1	All	10/31/2014	Howell Consulting	Initial draft
0.2	All	3/3/2015	Yolo OES	Revised all sections
0.3	All	4/9/2015	Howell Consulting	Revised all sections
0.4	All	4/14/2015	Yolo Health	Revised all sections
0.5	All	5/19/2015	Yolo OES	Inclusion of partner revisions
1.0	All	9/1/2015	Yolo OES	Changed to published version after public comment period