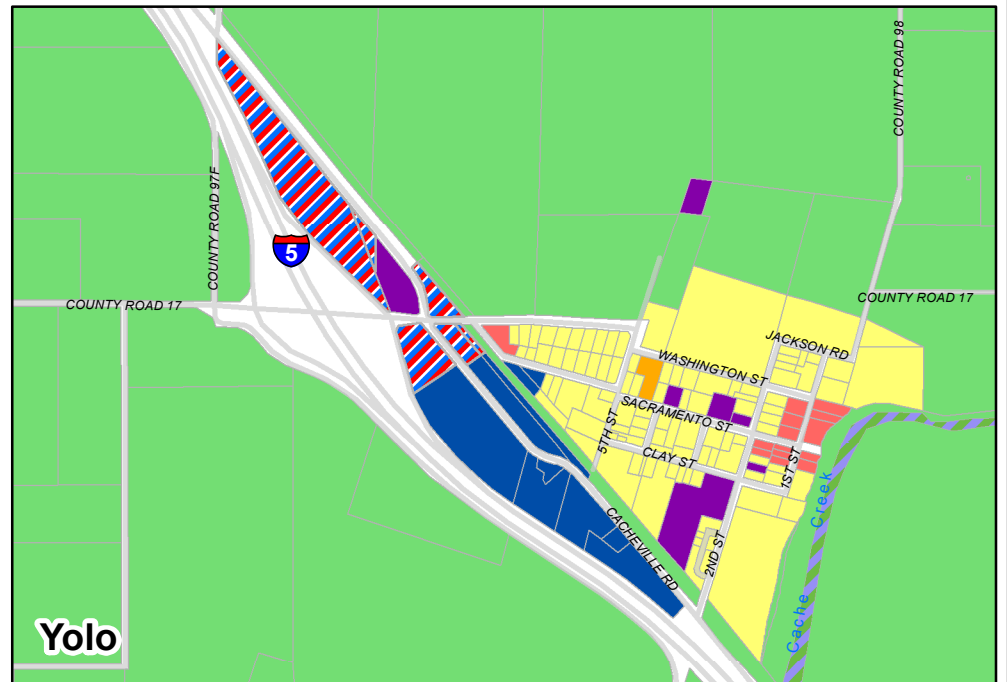
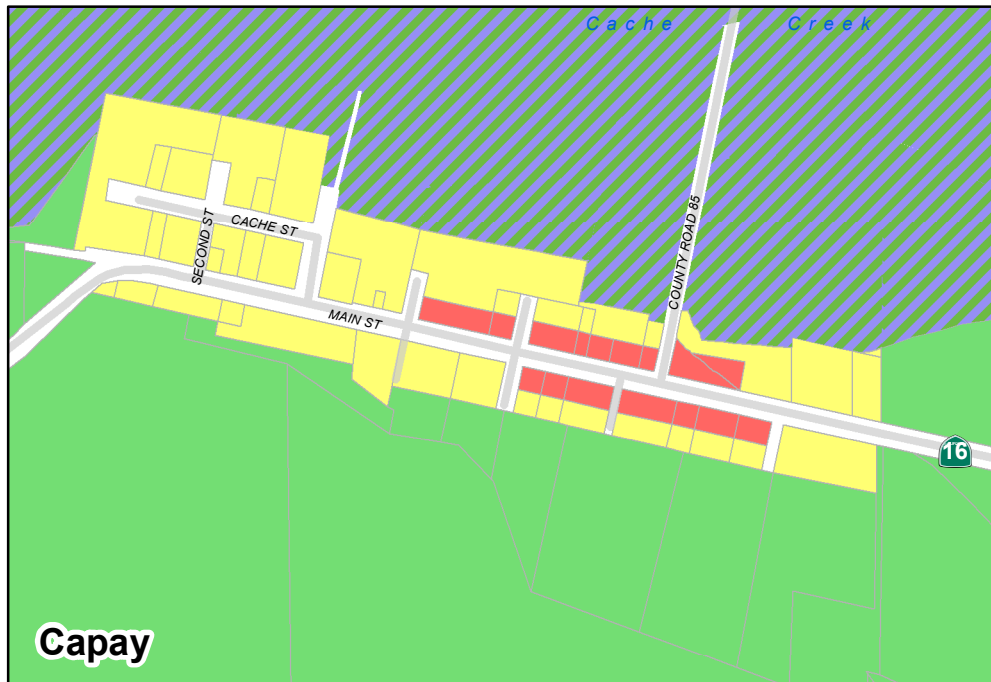
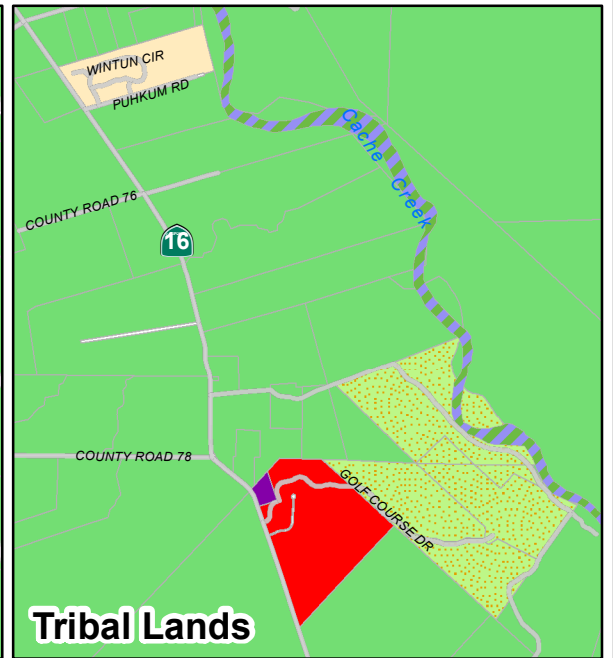
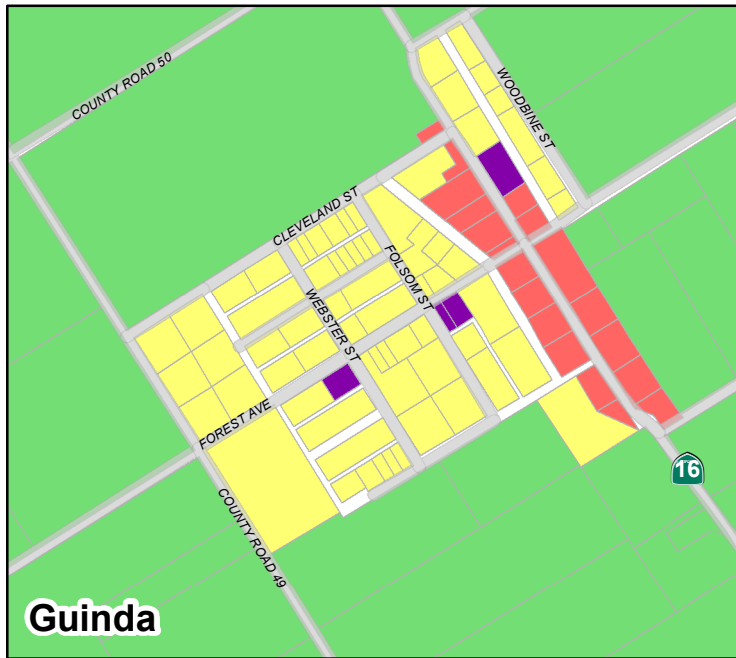


**ADOPTED ZONING - JULY, 2014**



- |                              |                                   |                                  |                                   |
|------------------------------|-----------------------------------|----------------------------------|-----------------------------------|
| Agricultural Intensive (A-N) | Parks and Recreation (P-R)        | Medium Density Residential (R-M) | Heavy Industrial (I-H)            |
| Agricultural Commercial      | Rural Residential - 5 Acre (RR-5) | General Commercial (C-G)         | Highway Services Commercial (C-H) |
| Public Open Space            | Low Density Residential (R-L)     | Local Commercial (C-L)           | Public and Quasi-Public (PQP)     |