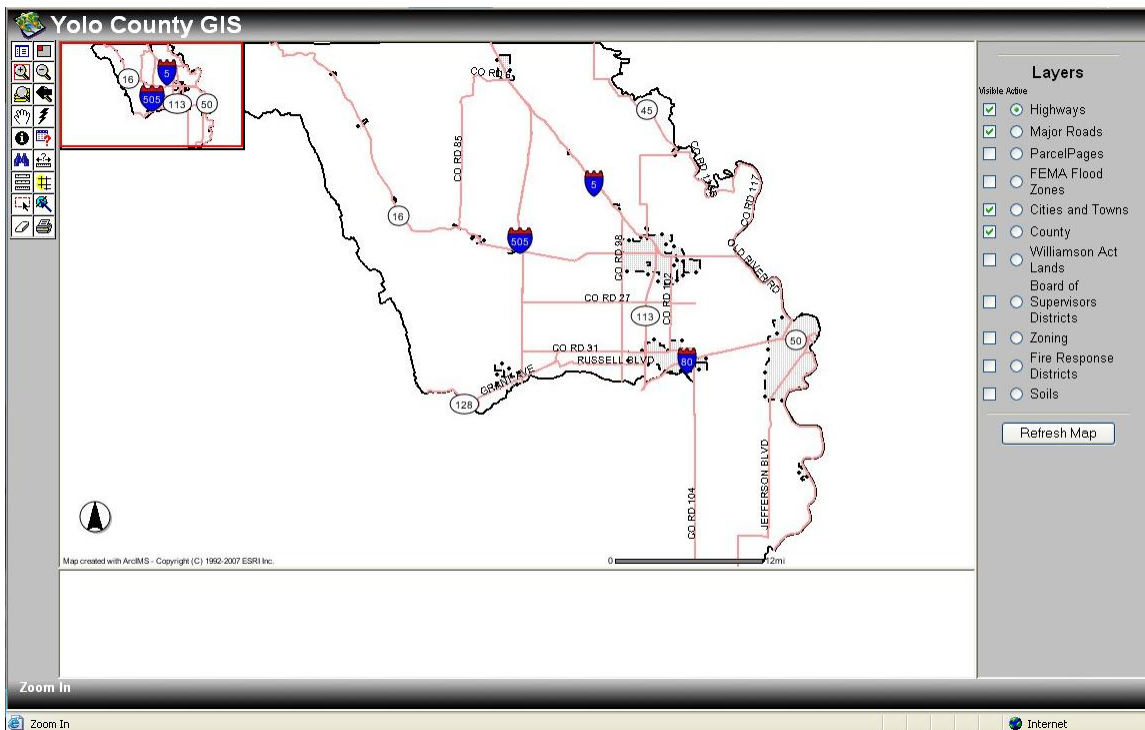






If you are looking for a copy of the official Assessor Map Book Page showing your parcel, you are in the right place! You will need to do two things first:

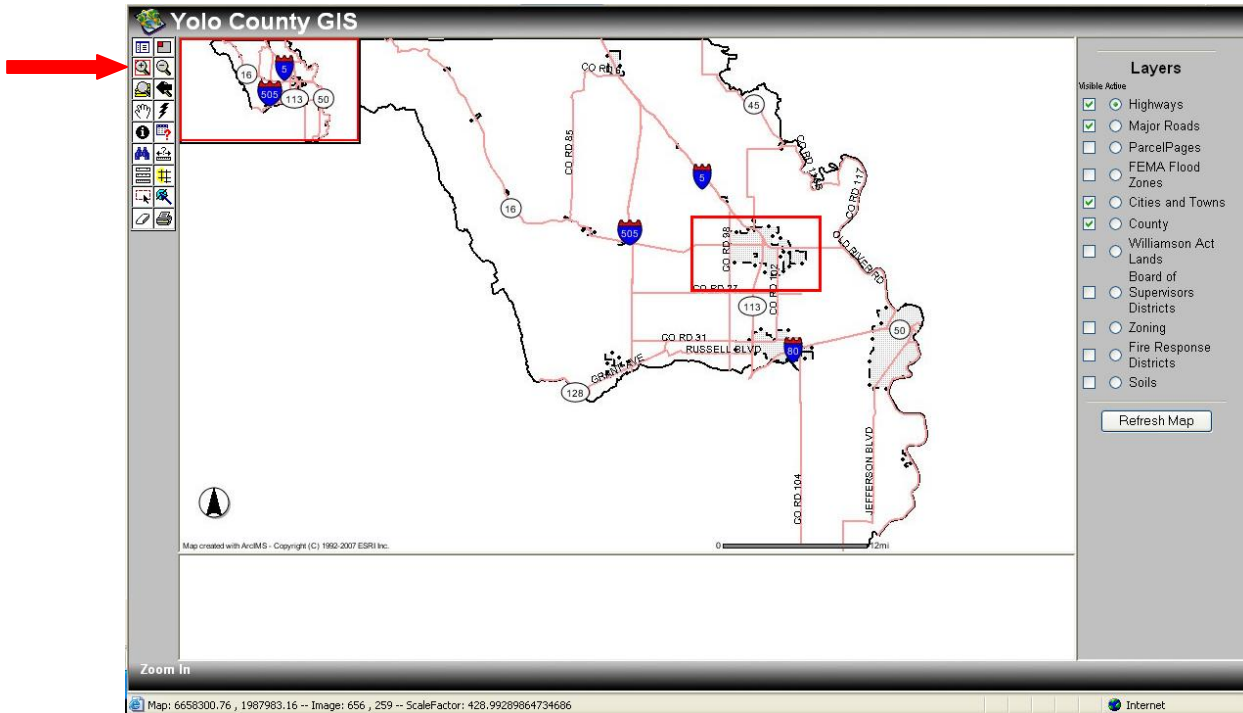
- 1) Disable any pop-up blockers, or allow pop-ups from this site.
- 2) Have the free Adobe Acrobat Reader installed on your computer, which can be found at <http://www.adobe.com>.

Next, please read these instructions completely (you may want to print them as a guide while using our GIS), then click on the Use GIS! button below.

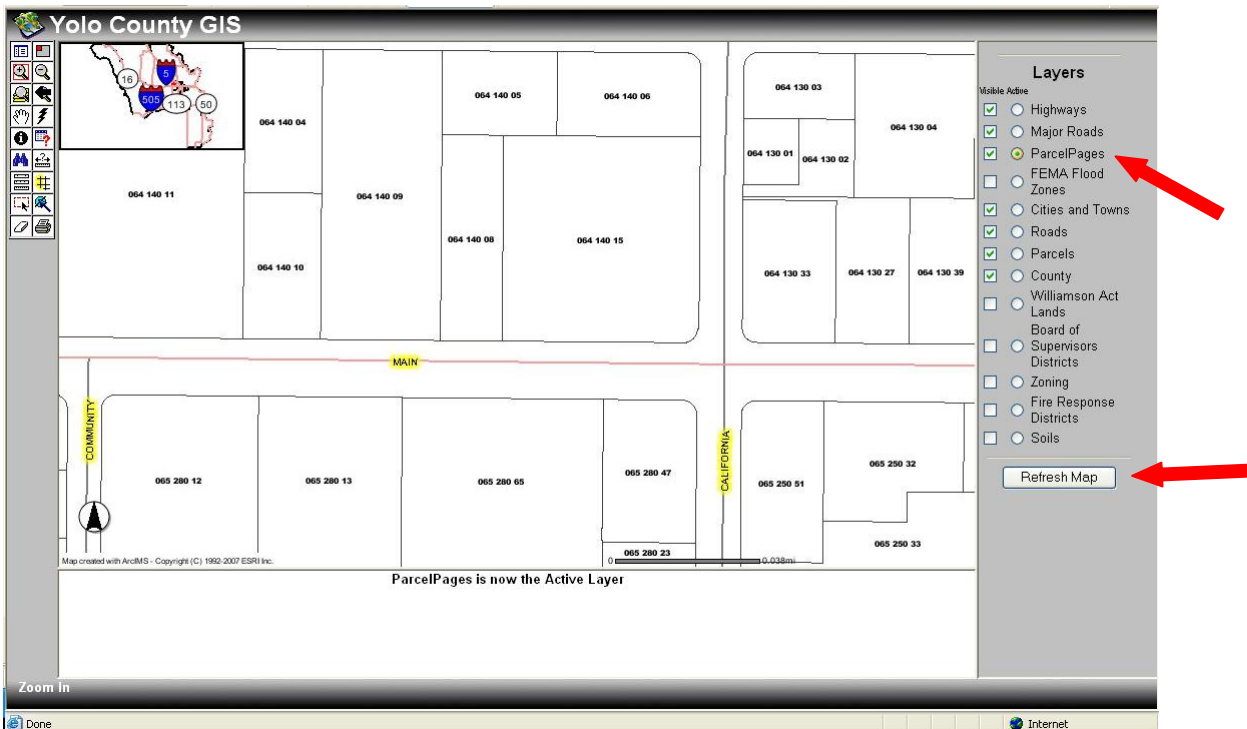



To start, find your parcel by either **ZOOMING**  into your neighborhood or by searching for your parcel number using the **FIND**  or **QUERY**  tools. (Ensure that the parcels layer is active and visible in order to utilize the Searching Tools, as seen in the layers legend on the right side of your screen.) You may have to zoom several times to find the exact location.

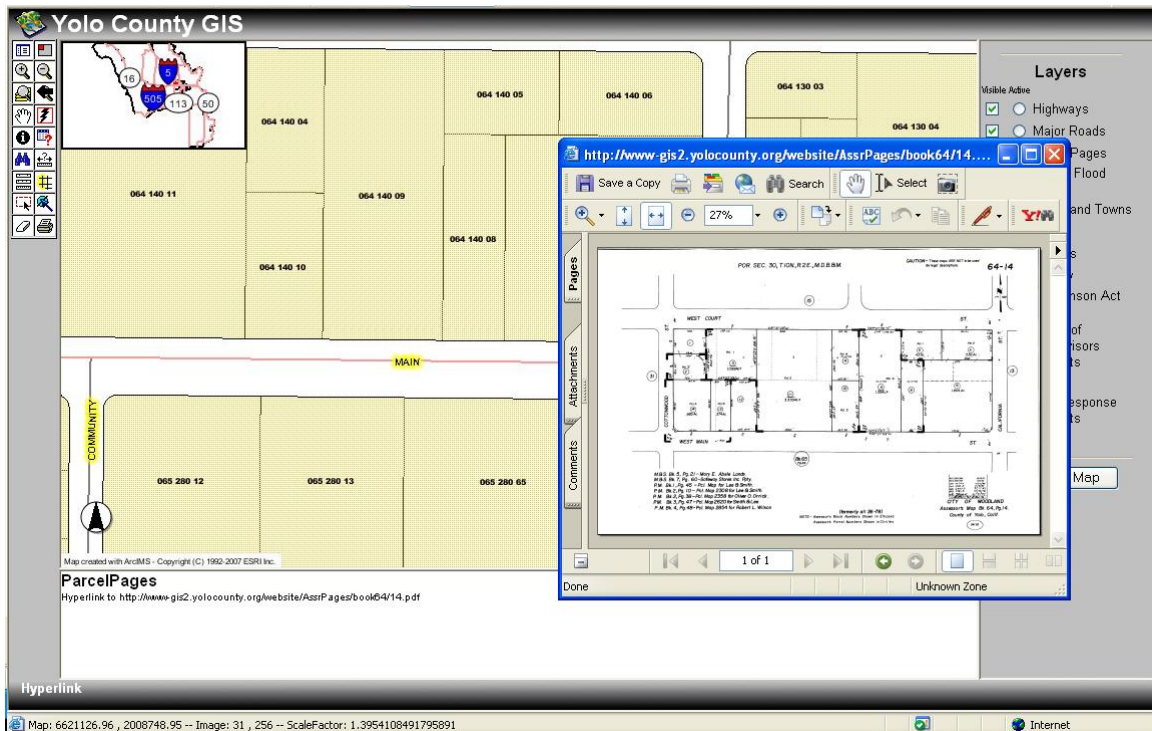
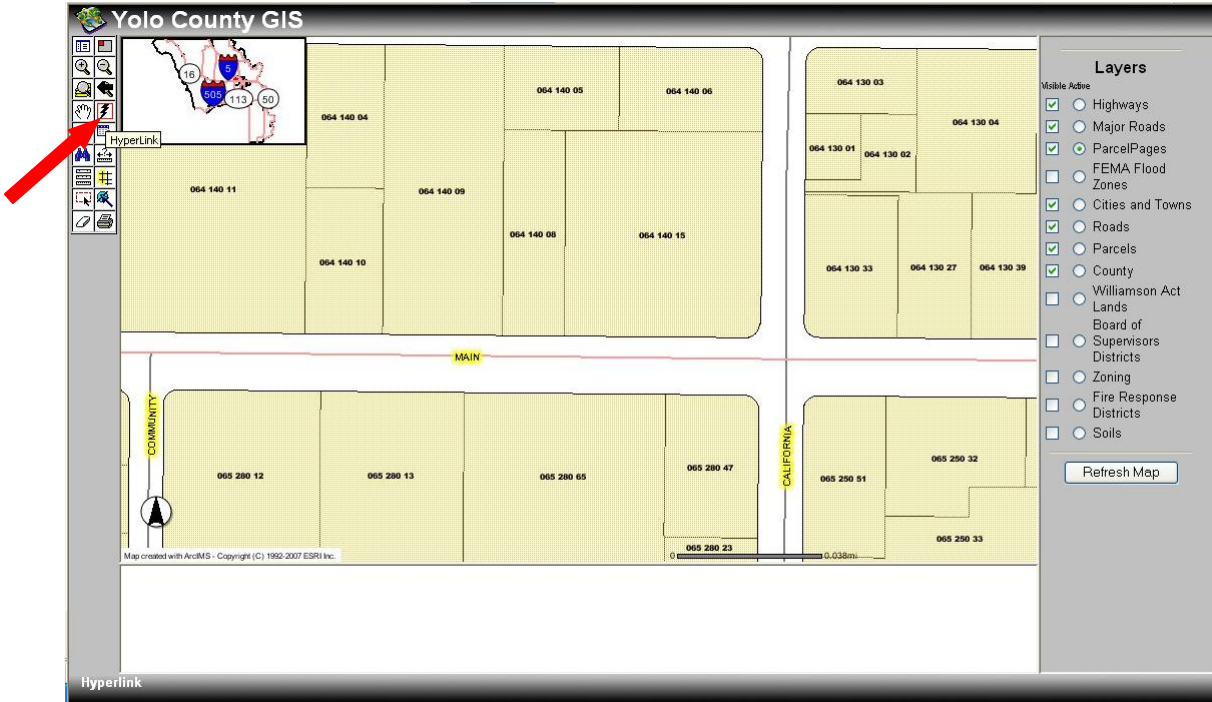
**ZOOM**  by clicking & holding the button and dragging the zoom box around the desired area of the County until you have reached your location.



Once you have located your parcel, check both the **VISIBLE** and **ACTIVE** buttons next to the **ParcelPages** Layer as seen below, and then click the **Refresh Map** button at the bottom.



Next, click the **HYPERLINK**  button then move the cursor over top of your parcel and click on your parcel. The PDF of your Parcel Page will open in a separate window.



You may need to adjust your printer settings to allow the page to print correctly. As these maps are native in 11x17 landscape format, you can change your printer properties to scale it to fit a normal 8x11 paper size most commonly found in home printers.

We hope you find this new tool useful and you can begin by clicking here:

