

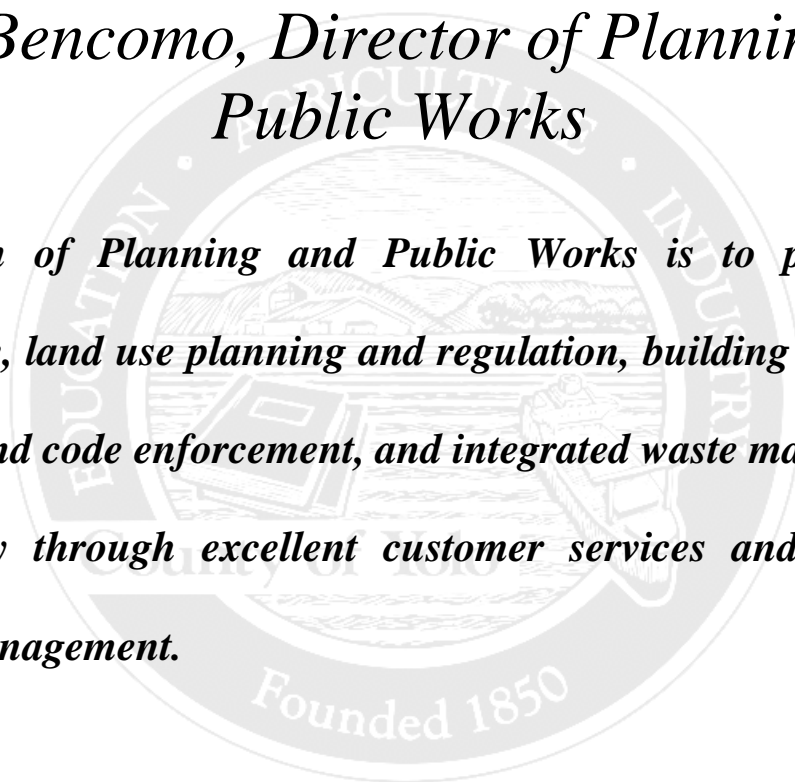
Planning and Public Works

Budget Unit Name	B/U No.	Page	Appropriation	Total
Planning & Public Works		191		
Building/Planning	297-1	195	\$3,142,484	
County Surveyor	150-1	196	\$38,150	
Integrated Waste	194-1	197	\$12,369,974	
Transportation	299-5	198	\$281,038	
Roads	299-1	199	\$20,898,788	
				<u>\$36,730,434</u>
TOTAL				

Planning and Public Works

John Bencomo, Director of Planning and Public Works

The mission of Planning and Public Works is to provide road maintenance, land use planning and regulation, building construction inspection and code enforcement, and integrated waste management in Yolo County through excellent customer services and responsible financial management.



SUMMARY

Planning and Public Works

Budget Category	Actual 2005/2006	Budget 2006/2007	Requested 2007/2008	Recommended 2007/2008	Change (Col4-Col2)
APPROPRIATIONS					
Salaries & Benefits	\$5,861,369	\$7,372,196	\$8,425,181	\$8,414,181	\$1,041,985
Services & Supplies	\$8,549,606	\$13,035,607	\$13,020,808	\$13,020,808	-\$14,799
Fixed Assets-Structures/Imps	\$1,403,685	\$13,269,285	\$12,668,000	\$12,668,000	-\$601,285
Other Charges	\$1,981,439	\$303,500	\$469,945	\$469,945	\$166,445
Operating Transfers Out	\$639,274	\$0	\$0	\$0	\$0
Fixed Assets-Equipment	\$237,710	\$378,500	\$884,500	\$884,500	\$506,000
Fixed Assets - Land	\$0	\$0	\$1,273,000	\$1,273,000	\$1,273,000
Total Appropriations:	\$18,673,083	\$34,359,088	\$36,741,434	\$36,730,434	\$2,371,346
REVENUES					
ACO Fund	\$0	\$25,500	\$62,400	\$62,400	\$36,900
Fees & Charges	\$9,976,614	\$10,001,375	\$9,904,100	\$9,958,100	-\$43,275
Federal/State Reimbursement	\$5,708,556	\$10,326,538	\$11,684,777	\$11,684,777	\$1,358,239
Other Revenue	\$1,786,989	\$3,400,300	\$2,768,500	\$2,768,500	-\$631,800
Operating Transfers In	\$34,243	\$459,000	\$450,000	\$450,000	-\$9,000
Property Tax	\$1,460,720	\$906,352	\$680,131	\$680,131	-\$226,221
Sales Tax	\$174,947	\$246,190	\$281,038	\$281,038	\$34,848
Pomona Fund	\$54,000	\$0	\$0	\$0	\$0
Carry Forward	\$-1,076,390	\$7,702,431	\$9,845,354	\$9,845,354	\$2,142,923
General Fund	\$338,758	\$985,002	\$985,134	\$920,134	-\$64,868
Intergovernment Revenue-Other	\$193,480	\$306,400	\$80,000	\$80,000	-\$226,400
Tribal Mitigation Funds	\$21,541	\$0	\$0	\$0	\$0
Total Revenues:	\$18,673,458	\$34,359,088	\$36,741,434	\$36,730,434	\$2,371,346
POSITIONS(FTE)		Current	Recommended		Funded
		94.00	94.00		94.00

DEPARTMENT RESPONSIBILITIES

The Planning and Public Works Department regulates land use planning, building inspection and code enforcement, integrated waste services, roads, engineering and other public works. Beginning in 2007-08, the parks and resources responsibilities of this department have been reorganized into an independent department.

SUMMARY OF RECOMMENDED BUDGET

It is recommended that the budget for the Planning and Public Works Department be increased by \$2,317,346. Increases in salaries and benefits (\$1,041,985); fixed assets-equipment (\$506,000); and fixed assets-land (\$1,273,000) and other charges (\$166,445) are partially offset by decreases in fixed assets-structures and improvements (-\$601,285), services and supplies (-\$14,799). This budget includes the code enforcement program at a net cost of \$64,797.

The Parks and Resources budget units have been removed from the Planning and Public Works Department in this fiscal year. the budget units include: Parks and Museum, Cache Creek Resource

Management, Fish and Game and Water Resources. This change reduces positions by 12, and the approved budget amount of \$4,068,407. The Parks and Resources budget is described in a separate budget summary.

Revenues

Planning and Public Works receives only 2% of its revenue from general fund. Other revenue sources include federal and state reimbursements (32%), fees and charges (27%), carry forward from non-general fund budgets, e.g., roads, integrated waste management (27%), other revenue, including the ACO Fund and special revenue funds (9%), and in dedicated property and state sales tax allocation (3%).

Positions

It is recommended that 94 full-time equivalent positions be funded for fiscal year 2007-08. This number reflects the transfer of 11 positions to the new Parks and Resources Department and two positions to the Probation Department to return the Yolo County Conservation Corps program to that department. Salary savings of \$65,000 is recommended for the Planning and Public Works Department.

Fixed Assets

The department request for structures, construction, land and equipment totaling \$14,825,500 is recommended in the budget. The Planning Division request of \$22,500 for planning division purchase of a new truck for building inspection is recommended to be paid from the department fee revenues. Equipment totaling \$137,000 is recommended for the Integrated Waste Management Division including replacement air quality measuring tool (GEM 2000); gas and leachate flow meters; leachate pumps; a forklift for the metals facility; and a pavement sweeper is recommended to be funded from the IWM fund. The road fund budget includes equipment totaling \$725,000. This includes 3 new pickups; 2 diesel trucks; and 2 graders to replace old vehicles and 3 radar feedback signs for traffic safety.

The Roads Division is planning road construction projects and replacing road equipment totaling \$9,778,000 due to an increase in state and federal funds and carry forward revenues. Integrated Waste is also planning costs for closure construction of waste management unit 3, a new fueling station, and groundwater monitoring extraction wells for \$2,890,000. Appropriations (\$1,273,000) to purchase land for a borrow site from which they can move fill dirt for the landfill are included in the recommended budget.

Significant Changes

This department has been reorganized as the Planning and Public Works Department. The parks and resources division has been formed into a new department.

GOALS AND ACCOMPLISHMENTS 2006-2007

Planning and Development Services

- Completed the Clarksburg Sugarmill specific plan, the Esparto Orchioulli Subdivision map, and the draft plans for the update of the Capay Valley and the Esparto Community General Plans.
- Demonstrated substantial progress on a revised County General Plan schedule and process.
- Completed the transfers of the Community Development Block Grant (CDBG) program to the Office of the County Administrator, and airport operations to the Department of General Services.

- Developed a user friendly and more streamlined processing procedure.
- Established a customer service, project review and inspections training program.
- Implemented expanded Internet services that include more user friendly and downloadable applications and building requirement information packets.
- Operationalized the digital image transferring components for expanded document storage capacity, and to assist in improving the "one-stop-shop" for permits requiring approval by both the PRPW department and the Environmental Health Division.
- Expanded the enforcement program to include contractor license review and enforcement.

Parks and Resources Management

- Completed the County Parks Master Plan, and the Grasslands Regional Park Master Plan.
- Initiated the implementation of the Propositions 12, 40 and 50 park bonds expenditure plan.
- Worked with the Water Resources Association (WRA) to complete the Integrated Regional Water Management Plan (IRWMP).
- Implemented the habitat grant for the Davis McClellan Air Force telecommunications site, which will be developed in conjunction with Grasslands Regional Park improvements.
- Completed the ten-year interim review for the Cache Creek Long Term Gravel Mining Permits.
- Started organization of new Parks and Resources Department.

Roads Engineering, Maintenance and Construction

- Updated the five-year maintenance and capital improvement plan for roads and bridges.
- Continued negotiations with the county administrator's office and cities regarding the methodology for the engineering report and analysis for a countywide road impact fee program.
- Completed "safe routes to school" improvement projects for Esparto and Knights Landing.
- Completed preliminary survey and environmental work for CR98 project, initiated preliminary engineering for the construction (Summer 2007) of bike lanes on CR 27, south of CR 99.

Integrated Waste Management and Recycling (Landfill)

- Implemented the county's expanded outreach program for recycling household and electronic waste, exceeding state goals.
- Completed the initial tasks associated with the approved county landfill and Environmental Impact Report (EIR), and secured grant funds for the continued bio-reactor facility operations.
- Completed construction of the Household Hazardous Waste Facility and the new landfill administration and operations building.

County Fleet Services

- Completed the transition of Fleet Services to the General Services Department.

GOALS AND OBJECTIVES 2007-2008

Planning and Development Services

- Demonstrate substantial progress on the revised County General Plan schedule and process, with completion of the alternatives, draft policies, and environmental analysis (EIR documents).
- Develop architectural guidelines to address design, siting, seasonal road access.
- Investigate and pursue a reclassification under the Federal Emergency Management Agency program community rating system to reflect actual flood risks.

- Develop a transfer of development rights and residential clustering ordinance.
- Develop an ordinance to address universal/visibility access issues for new construction.
- Investigate alternatives and costs for more user friendly computer programs with broader land use and building applications and interfaces with other related county department databases.
- Develop an in-lieu fee ordinance to address agricultural mitigation and affordable housing.

Roads Engineering, Maintenance and Construction

- Construct the in-bank mitigation on Cache Creek at Huff's Corner by Summer 2007.
- Develop for Board consideration a funded pilot program in cooperation with the Flood Control District and City of Woodland to address seasonal flood mitigation projects.
- Develop countywide grading ordinance to address development and agricultural drainage.
- Develop an update to the county's road construction and design standards, and the subdivision map requirements, to address smart growth and alternative designs.
- Update the five-year maintenance and capital improvement plan for roads and bridges.
- Develop engineers report on a countywide road impact fee program and coordinate with County Administrator.
- Complete the preliminary engineering and environmental work for the CR 98 improvements.
- Implement an equipment management and replacement program for new air quality standards.

Integrated Waste Management and Recycling (Landfill)

- Implement expanded programs to increase landfill waste diversion and recycling activities.
- Develop an effective resolution with haulers to address septic waste and sludge disposal.
- Implement the recently approved landfill alternatives study and EIR mitigations.
- Develop a landfill business plan, and establish disposal agreements with the cities.
- Develop a new construction and demolition recycling ordinance and establish franchising agreements.
- Continue operating the full-scale bioreactor project and seek additional federal grants funds.
- Implement a countywide office recycling pilot program and procurement policy with the General Services Department.

County Fleet Services

- Complete the transfer of Fleets accounting services to the General Services Department.

Planning and Public Works Building and Planning

Budget Category	Actual 2005/2006	Budget 2006/2007	Requested 2007/2008	Recommended 2007/2008	Change (Col4-Col2)
APPROPRIATIONS					
Salaries & Benefits	\$1,059,255	\$1,757,722	\$2,082,714	\$2,071,714	\$313,992
Services & Supplies	\$755,416	\$1,140,830	\$1,048,270	\$1,048,270	-\$92,560
Fixed Assets-Equipment	\$11,393	\$59,500	\$22,500	\$22,500	-\$37,000
Total Appropriations:	\$1,826,064	\$2,958,052	\$3,153,484	\$3,142,484	\$184,432
REVENUES					
Fees & Charges	\$1,371,645	\$1,272,200	\$1,460,600	\$1,514,600	\$242,400
Federal/State Reimbursement	\$7,538	\$221,000	\$200,000	\$200,000	-\$21,000
Operating Transfers In	\$34,243	\$459,000	\$450,000	\$450,000	-\$9,000
ACO Fund	\$0	\$25,500	\$62,400	\$62,400	\$36,900
Other Revenue	\$1,363	\$2,000	\$2,000	\$2,000	\$0
Pomona Fund	\$54,000	\$0	\$0	\$0	\$0
Tribal Mitigation Funds	\$21,541	\$0	\$0	\$0	\$0
General Fund	\$335,734	\$978,352	\$978,484	\$913,484	-\$64,868
Total Revenues:	\$1,826,064	\$2,958,052	\$3,153,484	\$3,142,484	\$184,432

BUDGET UNIT DESCRIPTION

The Building and Planning Division is responsible for reviewing land use and construction activities within the unincorporated area, by implementing a variety of local and state laws, including the Yolo County General Plan, County Zoning Code, Uniform Building Code, Subdivision Map Act, Permit Streamlining Act and the California Environmental Quality Act. The division also provides public outreach by serving as liaison to various community advisory committees and the Planning Commission. Code enforcement (Budget Unit 288-1) is included in this narrative as a separate program, which works with landowners to correct existing zoning and/or building violations. The general fund cost for the code enforcement division is \$64,797 (Budget Unit 297-1, Fund 110).

PROGRAM SUMMARIES

Key Facts

Planning Division

- Processed 50 planning and zoning applications for the fiscal year.

Building Division

- Completed 8,188 inspections at 4,098 sites traveling 38,432 miles by June, 2007.
- Issued 1,493 permits (532 building, 464 electrical, 237 plumbing, 173 mechanical, 24 demo, 46 grading, 17 manufactured homes).
- Completed 414 plan checks.
- Issued 960 business licenses in 2006.

Planning and Public Works County Surveyor

Budget Category	Actual 2005/2006	Budget 2006/2007	Requested 2007/2008	Recommended 2007/2008	Change (Col4-Col2)
APPROPRIATIONS					
Services & Supplies	\$25,179	\$30,150	\$38,150	\$38,150	\$8,000
Total Appropriations:	\$25,179	\$30,150	\$38,150	\$38,150	\$8,000
REVENUES					
Fees & Charges	\$22,155	\$23,500	\$31,500	\$31,500	\$8,000
General Fund	\$3,024	\$6,650	\$6,650	\$6,650	\$0
Total Revenues:	\$25,179	\$30,150	\$38,150	\$38,150	\$8,000

BUDGET UNIT DESCRIPTION

The budget unit contains the funds for activities of the County Surveyor. Surveying activities that cannot be charged to the road fund, or other budget units, are included here (Budget Unit 150-1, Fund 110).

PROGRAM SUMMARIES

Duties for the surveyor include review and endorsement of maps as required by law, reviewing and archiving of Local Agency Formation Commission (LAFCO) and special district maps and legal descriptions.

Planning and Public Works Integrated Waste

Budget Category	Actual 2005/2006	Budget 2006/2007	Requested 2007/2008	Recommended 2007/2008	Change (Col4-Col2)
APPROPRIATIONS					
Salaries & Benefits	\$1,677,560	\$1,958,695	\$2,152,474	\$2,152,474	\$193,779
Services & Supplies	\$4,817,114	\$6,432,132	\$5,448,055	\$5,448,055	\$-984,077
Fixed Assets-Equipment	\$30,639	\$319,000	\$137,000	\$137,000	\$-182,000
Fixed Assets-Structures/Imps	\$103,235	\$5,655,000	\$2,890,000	\$2,890,000	\$-2,765,000
Fixed Assets - Land	\$0	\$0	\$1,273,000	\$1,273,000	\$1,273,000
Other Charges	\$1,963,350	\$303,000	\$469,445	\$469,445	\$166,445
Total Appropriations:	\$8,591,898	\$14,667,827	\$12,369,974	\$12,369,974	\$-2,297,853
REVENUES					
Fees & Charges	\$8,020,303	\$8,108,075	\$7,531,000	\$7,531,000	\$-577,075
Federal/State Reimbursement	\$139,700	\$725,000	\$275,000	\$275,000	\$-450,000
Other Revenue	\$948,576	\$348,150	\$841,150	\$841,150	\$493,000
Intergovernment Revenue-Other	\$193,480	\$306,400	\$80,000	\$80,000	\$-226,400
Carry Forward	\$-710,161	\$5,180,202	\$3,642,824	\$3,642,824	\$-1,537,378
Total Revenues:	\$8,591,898	\$14,667,827	\$12,369,974	\$12,369,974	\$-2,297,853

BUDGET UNIT DESCRIPTION

This budget unit finances the operation of the county's integrated waste management program and the operation of the Yolo County Central Landfill and Esparto Convenience Center (transfer station). The budget operates as an enterprise fund, which means that user fees must cover all costs of the program, including capital improvements (Budget Unit 194-1, Fund 194).

PROGRAM SUMMARIES

Key Facts

For fiscal year 2006-07 through March 31, 2007

- Received and disposed of 134,221 tons of waste.
- Recycled 75,423 tons of waste.
- Held seven Household Hazardous Waste (HHW) events and collected 149 tons of hazardous waste.

For fiscal year 2006-07 through May 15, 2007:

- 3,667 households participated in nine HHW events, a 23% increase over 2005-06 annual total.
- Recycled 386 tons of electronic waste (cell phones, clocks, radios, shop tools, small kitchen appliances, vacuums, computers, office machines, etc.), which included 250 tons of TV's, computer monitors and laptops.

Planning and Public Works Transportation

Budget Category	Actual 2005/2006	Budget 2006/2007	Requested 2007/2008	Recommended 2007/2008	Change (Col4-Col2)
APPROPRIATIONS					
Services & Supplies	\$174,946	\$246,190	\$281,038	\$281,038	\$34,848
Total Appropriations:	\$174,946	\$246,190	\$281,038	\$281,038	\$34,848
REVENUES					
Other Revenue	\$374	\$0	\$0	\$0	\$0
Sales Tax	\$174,947	\$246,190	\$281,038	\$281,038	\$34,848
Total Revenues:	\$175,321	\$246,190	\$281,038	\$281,038	\$34,848

BUDGET UNIT DESCRIPTION

This budget unit provides fiscal support for various public transportation programs in Yolo County. The Yolo County Transportation District (YCTD) administers these programs. Funding is provided from the optional 1/4 cent of the state sales tax (Transportation Development Act) adopted by county voters (Budget Unit 299-5, Fund 135)

PROGRAM SUMMARIES

This budget unit is a pass-through account to transfer funding to the Yolo County Transportation District.

Planning and Public Works Roads

Budget Category	Actual 2005/2006	Budget 2006/2007	Requested 2007/2008	Recommended 2007/2008	Change (Col4-Col2)
APPROPRIATIONS					
Salaries & Benefits	\$3,124,554	\$3,655,779	\$4,189,993	\$4,189,993	\$534,214
Services & Supplies	\$2,776,951	\$5,186,305	\$6,205,295	\$6,205,295	\$1,018,990
Fixed Assets-Equipment	\$195,678	\$0	\$725,000	\$725,000	\$725,000
Fixed Assets-Structures/Imps	\$1,300,450	\$7,614,285	\$9,778,000	\$9,778,000	\$2,163,715
Other Charges	\$18,089	\$500	\$500	\$500	\$0
Operating Transfers Out	\$639,274	\$0	\$0	\$0	\$0
Total Appropriations:	\$8,054,996	\$16,456,869	\$20,898,788	\$20,898,788	\$4,441,919
REVENUES					
Fees & Charges	\$562,511	\$597,600	\$881,000	\$881,000	\$283,400
Federal/State Reimbursement	\$5,561,318	\$9,380,538	\$11,209,777	\$11,209,777	\$1,829,239
Property Tax	\$1,460,720	\$906,352	\$680,131	\$680,131	\$-226,221
Other Revenue	\$836,676	\$3,050,150	\$1,925,350	\$1,925,350	\$-1,124,800
Carry Forward	\$-366,229	\$2,522,229	\$6,202,530	\$6,202,530	\$3,680,301
Total Revenues:	\$8,054,996	\$16,456,869	\$20,898,788	\$20,898,788	\$4,441,919

BUDGET UNIT DESCRIPTION

This budget unit finances the activities of the Roads Division. Under state accounting regulations, road funds must be maintained as a separate entity to identify the use of legally earmarked financing resources, such as the county share of gasoline tax revenue. Funds are used for maintenance of the county road system, related work and for road construction projects as funding is available (Budget Unit 299-1, Fund 130).

PROGRAM SUMMARIES

Key Facts

- Used 3,573 tons of asphalt and concrete to fill potholes and patch county roads.
- Maintained 794 miles of roads.
- Maintained 170 bridges.
- Completed 55.3 miles of chip seal.
- Constructed two new bridges: 1) CR 21A and CR 85B over Winters Canal; 2) CR 89 over the South Fork Willow Slough.
- Widened and rehabilitated CR 21A and 85B in and near Esparto.
- Completed a Safe Routes to School sidewalk project in Esparto.
- Repaired a landslide on CR 57.

- j. County Road 22 over Tule Canal; Maintain Habitat Restoration Sites..... \$20,000
Construction completed.
Sources of Financing: Federal \$17,700
County..... \$2,300
- k. Nine bridge locations \$36,000
Bridge Scour study
Sources of Financing: Federal \$31,800
County..... \$4,200

3 Road Improvement Projects

- a. Road Rehabilitation, County Road 85 Overlay \$342,000
Bidding and Construction Phase
Sources of Financing: Indian Gaming Community Benefit Funds \$342,000
- b. Road Rehabilitation, County Roads 22,27,89,101A, 32,..... \$1,858,000
Bidding and Construction Phase
Sources of Financing: Federal \$397,752
County..... \$1,460,248
- c. County Road 99; Widening for Bike Lanes \$1,800,000
Bidding and Construction Phase
Sources of Financing: Federal \$160,580
State..... \$1,292,538
County..... \$346,882
- d. County Road 32A; Widening for Bike Lanes \$1,288,000
Right of Way and Construction Phase
Sources of Financing: Federal \$1,140,266
State..... \$16,173
County..... \$131,561
- e. County Road 98, Widening with Bike Lanes \$100,000
Preliminary Engineering and Environmental Phase
Sources of Financing: Federal \$88,530
County..... \$11,470
- f. Scenic/Interpretive Areas (Capay Valley) \$30,000
Preliminary Engineering Phase
Sources of Financing: Federal \$26,559
County..... \$3,441
- g. Chip Seal Reconstruct on Gaffney Road \$120,000
Construction Phase
Source of Financing: County..... \$120,000
- h. Chip Seal Reconstruct on Central Avenue..... \$200,000
Construction Phase
Source of Financing: County..... \$200,000

- i. Chip Seal Reconstruct on County Road 49/59 \$100,000
 Construction Phase
 Source of Financing: County..... \$100,000
- j. Chip Seal Reconstruct on Willowpoint Road..... \$25,000
 Complete Chip Seal & Reconstruct
 Source of Financing: County..... \$25,000
- k. Chip Seal Reconstruct on Clarksburg Road \$25,000
 Complete Chip Seal & Reconstruct
 Source of Financing: County..... \$25,000
- l. Intersection Safety Improvement County Roads 98/27 \$250,000
 Widen intersection to improve safety
 Source of Financing: County..... \$250,000

4 Culvert & Improvements

- a. Huff's Corner, Along Cache Creek..... \$2,000,000
 Culvert and Improvements
 Sources of Financing: State OES \$1,500,000
 County General Fund \$500,000

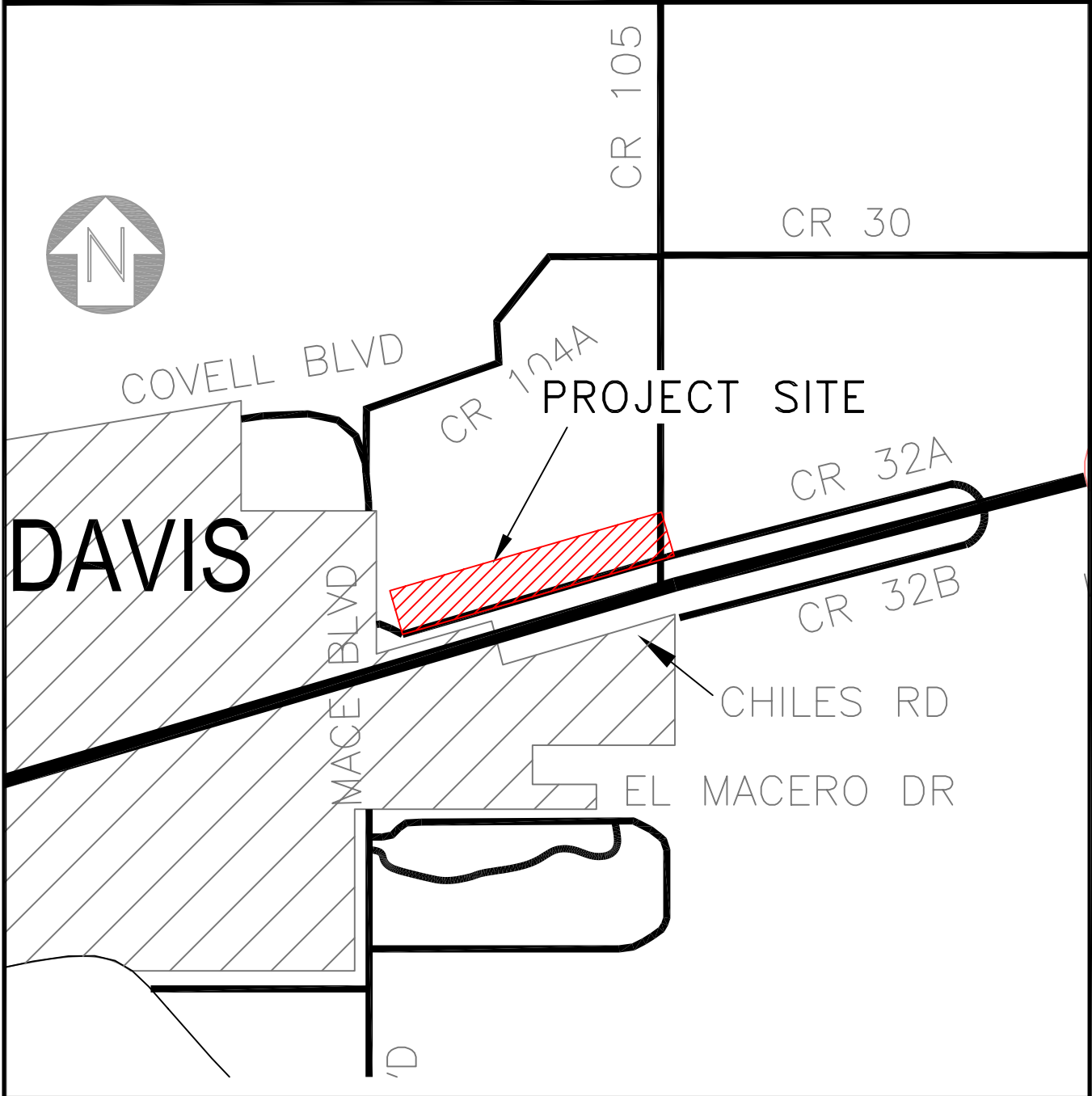
Total: \$9,689,000

ROAD FUND PROJECT SITE MAPS

PROJECT: 3d

ROAD NO. OR NAME: County Road 32A between Mace Blvd. and County Road 105

ESTIMATED COST: \$1,288,000



DESCRIPTION OF WORK: Reconstruction of CR 32A for Bike lane Widening.

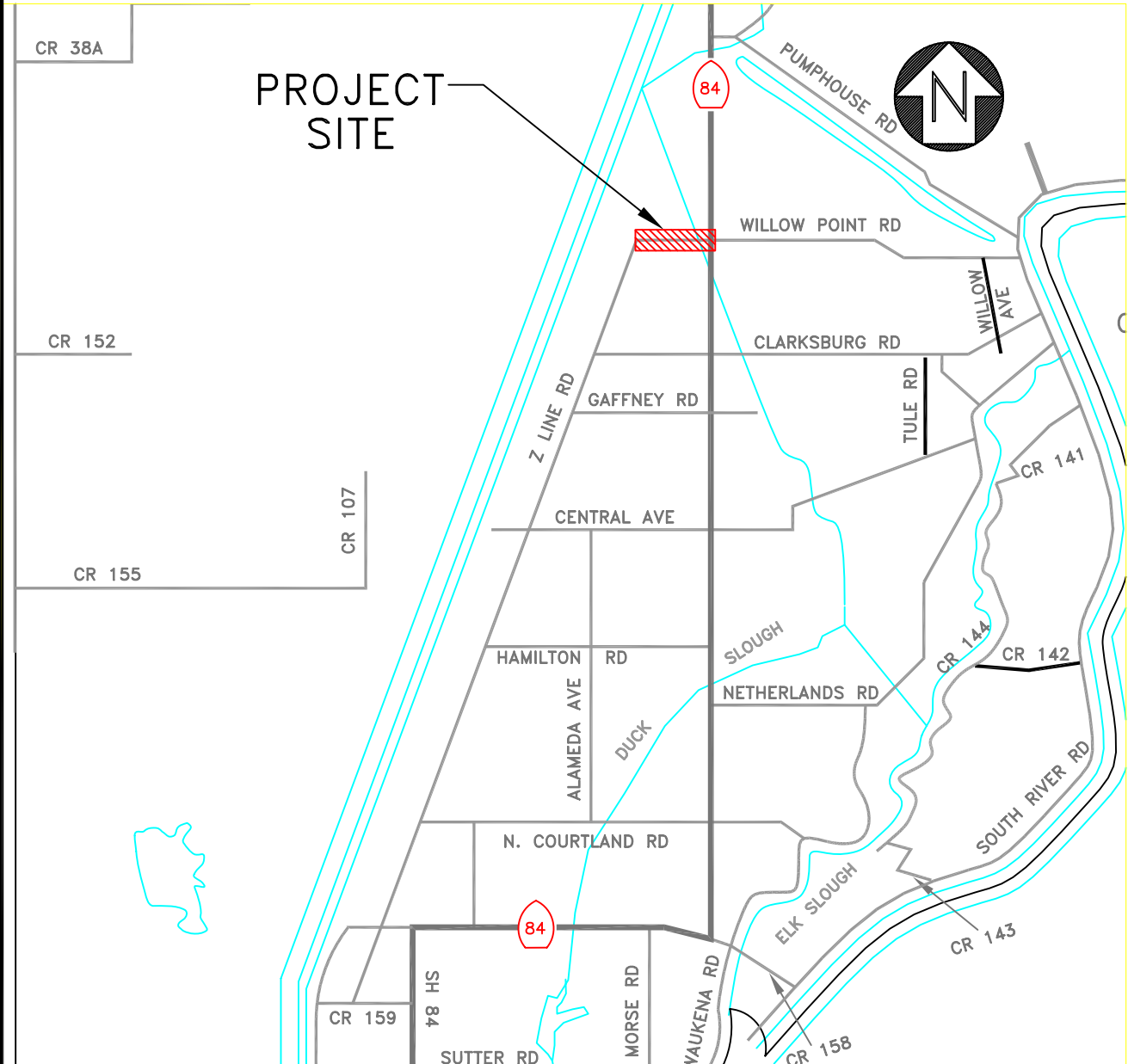
NOTES: 88.53% Reimbursement from Federal Funds, 11.47% County/State/Clean Air funds.

ROAD FUND PROJECT SITE MAPS

PROJECT 3j

ROAD NO. OR NAME: WILLOW POINT RD, Z LINE RD TO SR 84

ESTIMATED COST: \$25,000



DESCRIPTION OF WORK: Complete Chip Seal & Reconstruct

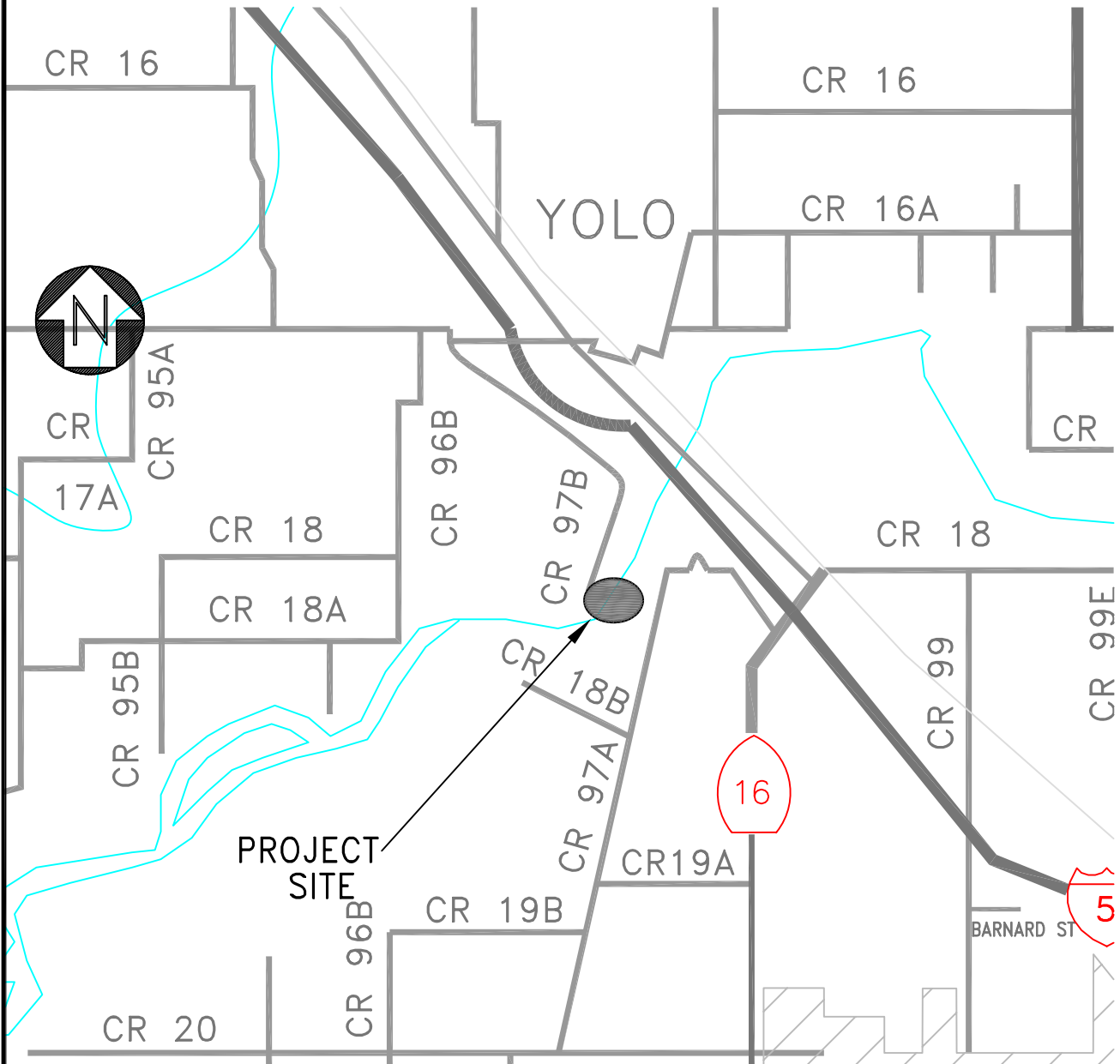
NOTES: County funds.

ROAD FUND PROJECT SITE MAPS

PROJECT 4a

PROJECT NO. OR NAME: HUFF'S CORNER, ALONG CACHE CREEK

ESTIMATED COST: \$2,000,000



DESCRIPTION OF WORK: Levee Repair

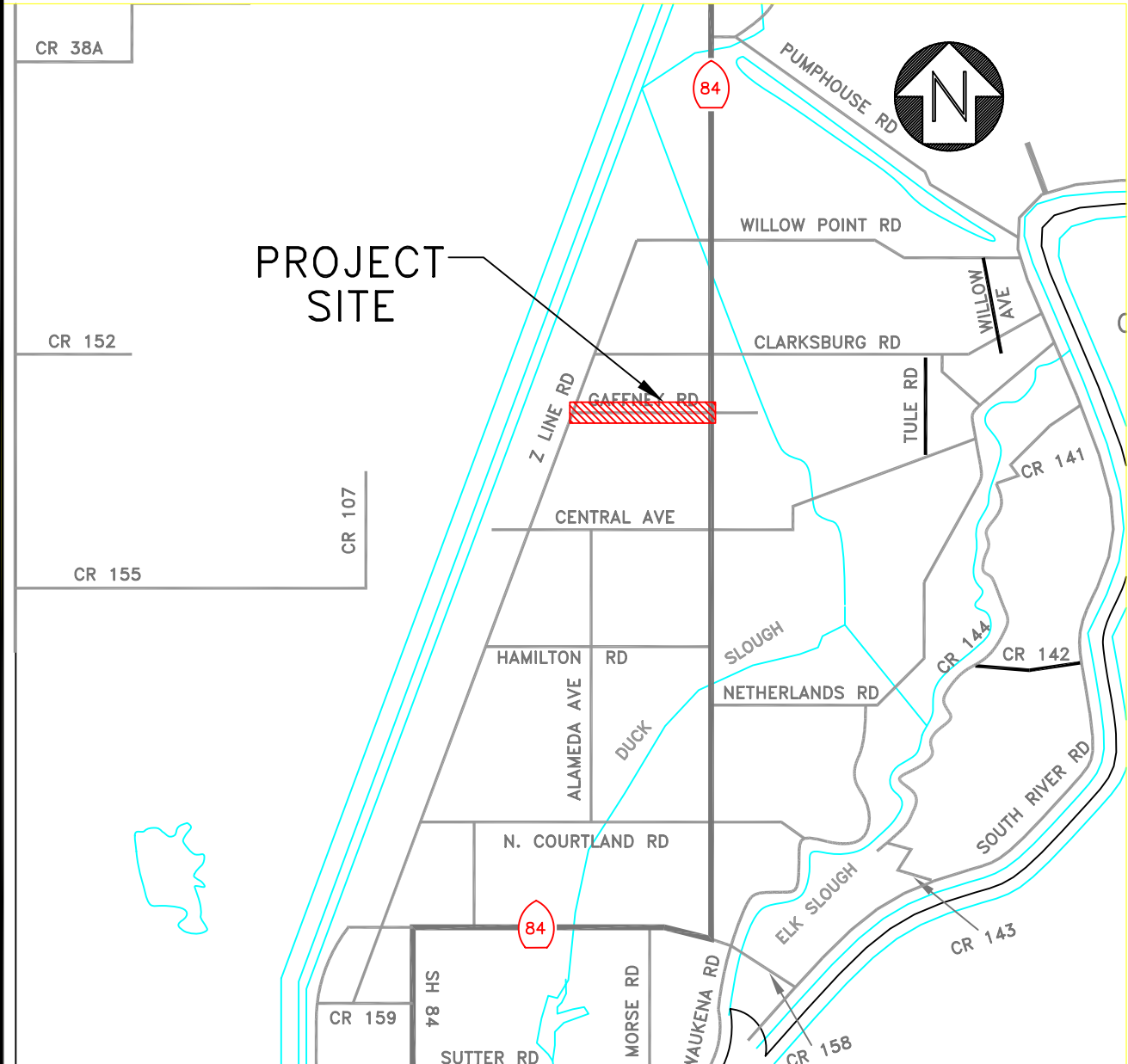
NOTES: 75% Reimbursement from State OES, 25% County General Fund

ROAD FUND PROJECT SITE MAPS

PROJECT 3g

ROAD NO. OR NAME: GAFFNEY RD, Z LINE RD TO SR 84

ESTIMATED COST: \$120,000



DESCRIPTION OF WORK: Complete Chip Seal & Reconstruct

NOTES: County funds.

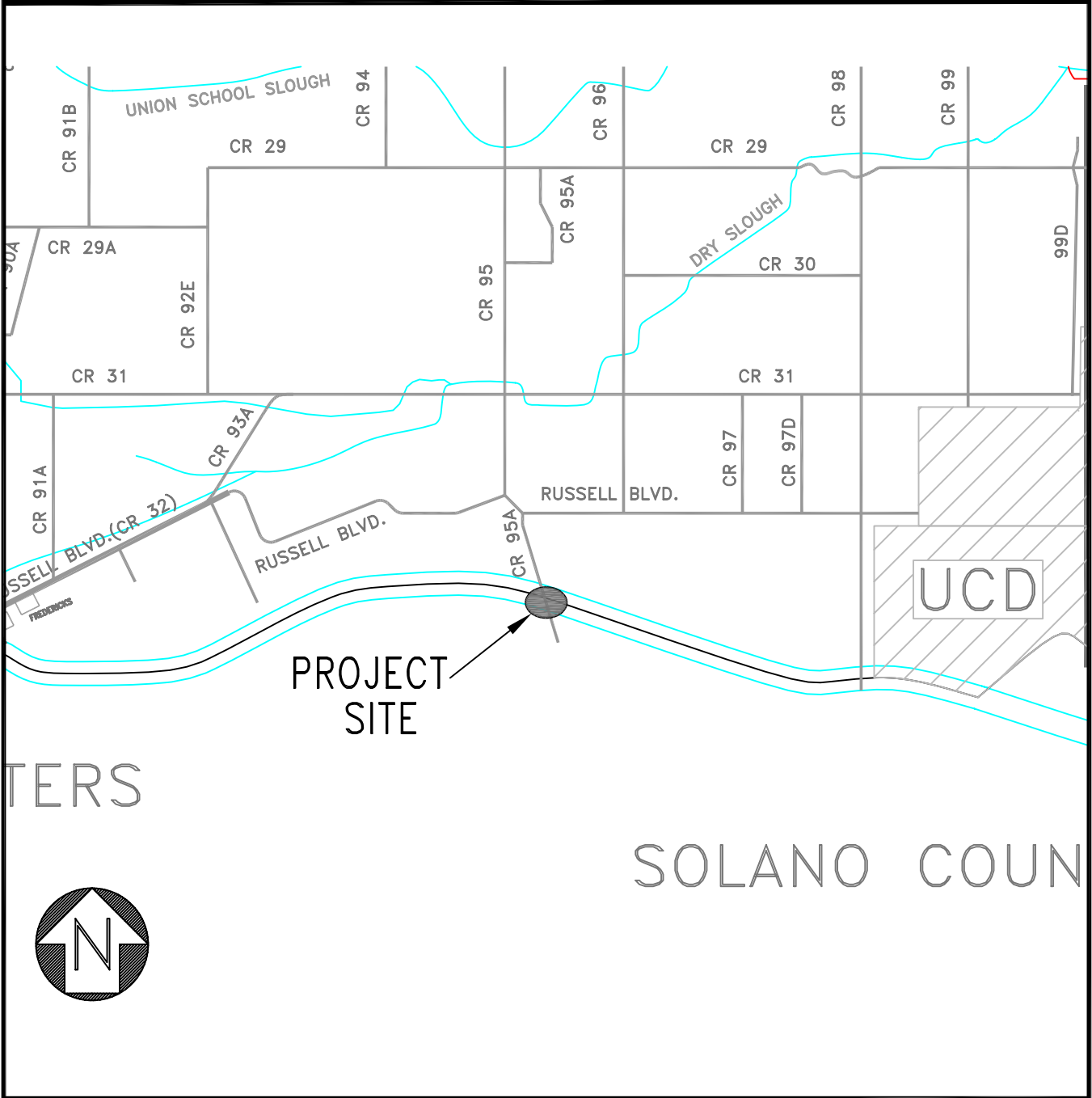
ROAD FUND PROJECT SITE MAPS

PROJECT 2d

ROAD NO. OR NAME: CR 95A Stevenson Bridge (Solano County/Yolo Bridge)

ESTIMATED COST: \$30,000

BRIDGE NO.: 23C-92



DESCRIPTION OF WORK: Preliminary Engineering

NOTES: 88.53% Reimbursement from Federal Fund, 11.47% from County Road Funds.

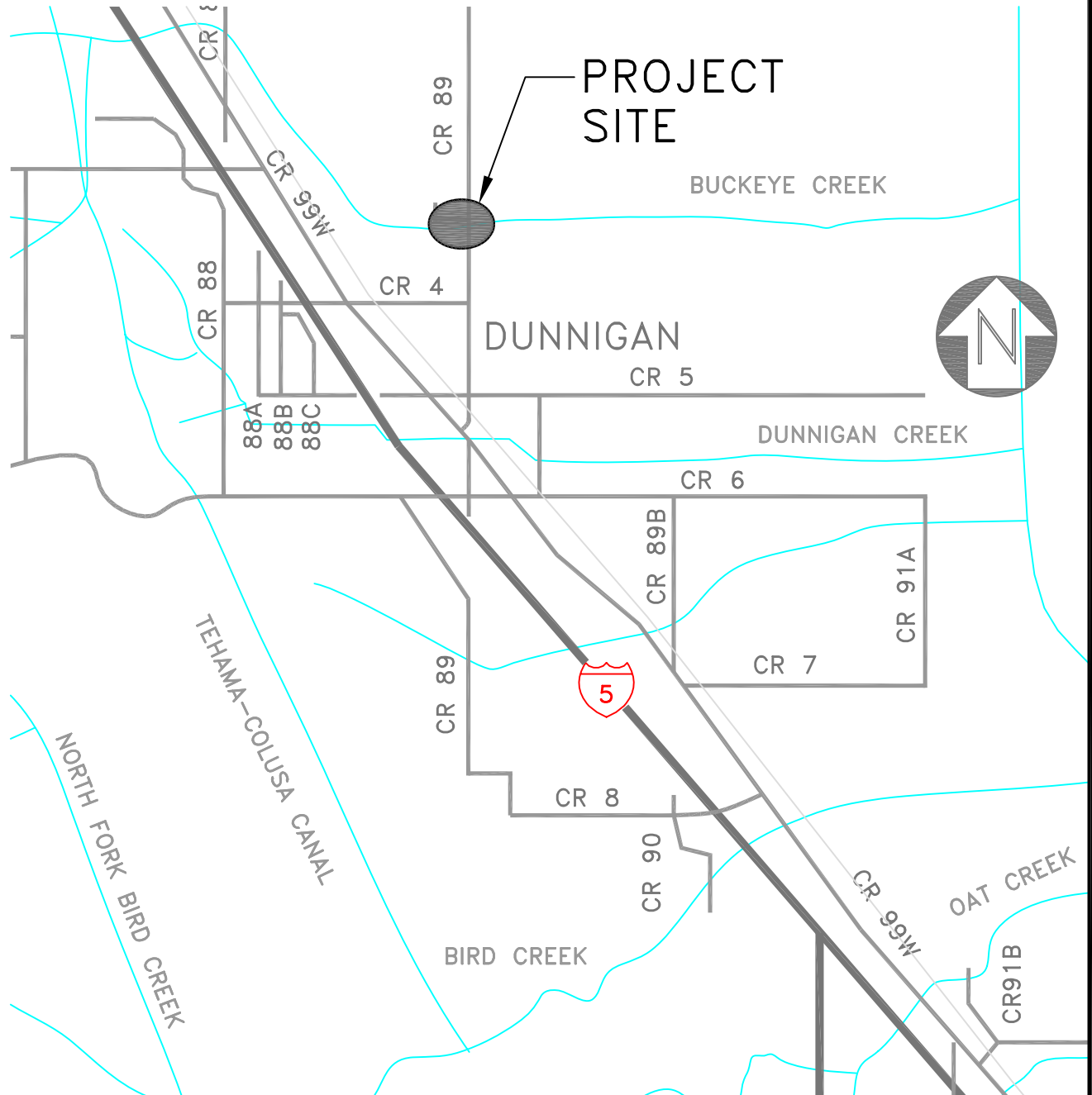
ROAD FUND PROJECT SITE MAPS

PROJECT: 2e

ROAD NO. OR NAME: County Road 89 over Buckeye Creek

ESTIMATED COST: \$150,000

BRIDGE NO.: 22C-135



DESCRIPTION OF WORK: Preliminary Engineering for Bridge Replacement

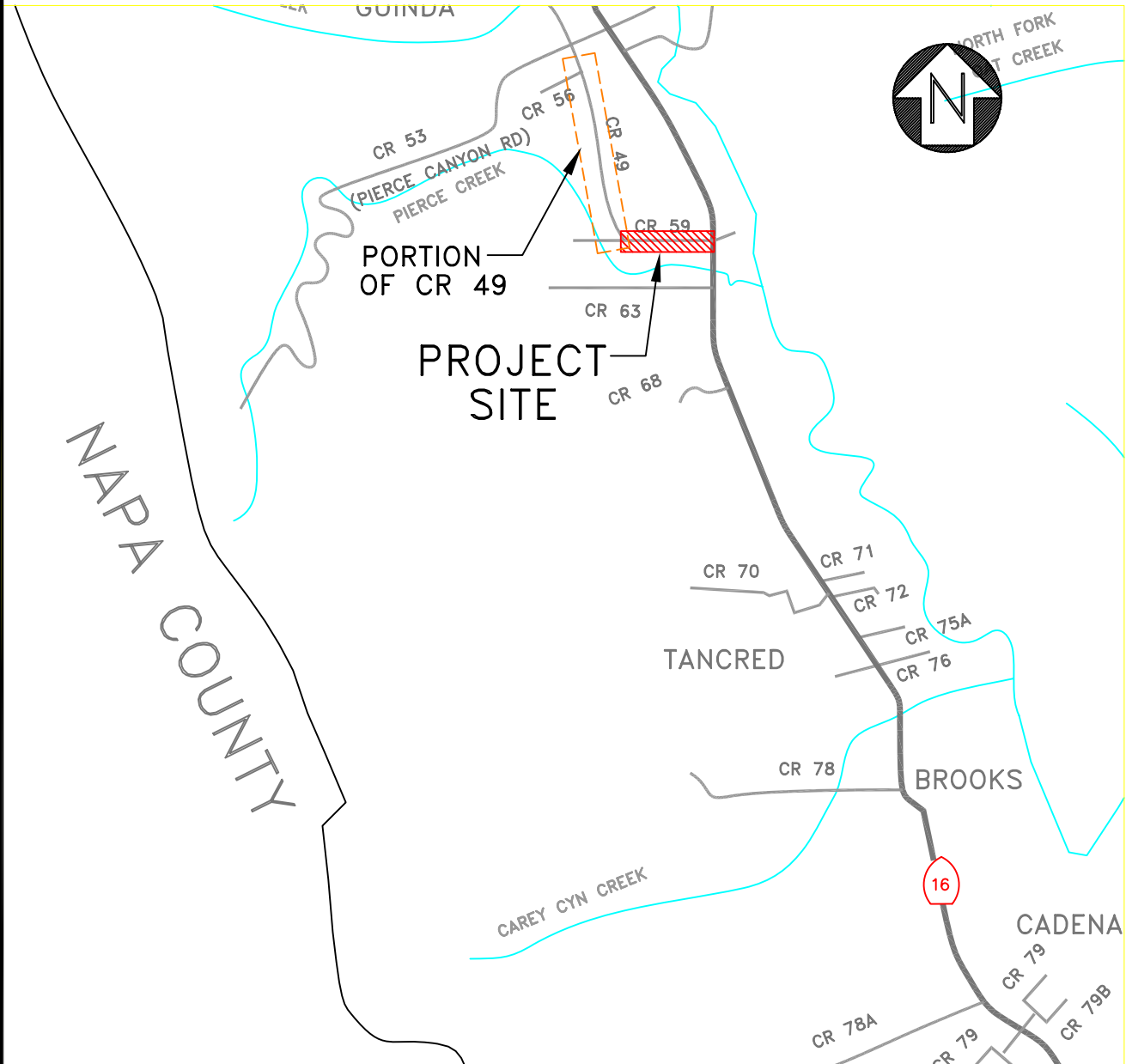
NOTES: 88.53% Reimbursement from Federal Fund, 11.47% from County Road Funds.

ROAD FUND PROJECT SITE MAPS

PROJECT 3i

ROAD NO. OR NAME: CHIP SEAL RECONSTRUCT CR49/59

ESTIMATED COST: \$100,000



DESCRIPTION OF WORK: Complete Chip Seal & Reconstruct

NOTES: County funds.

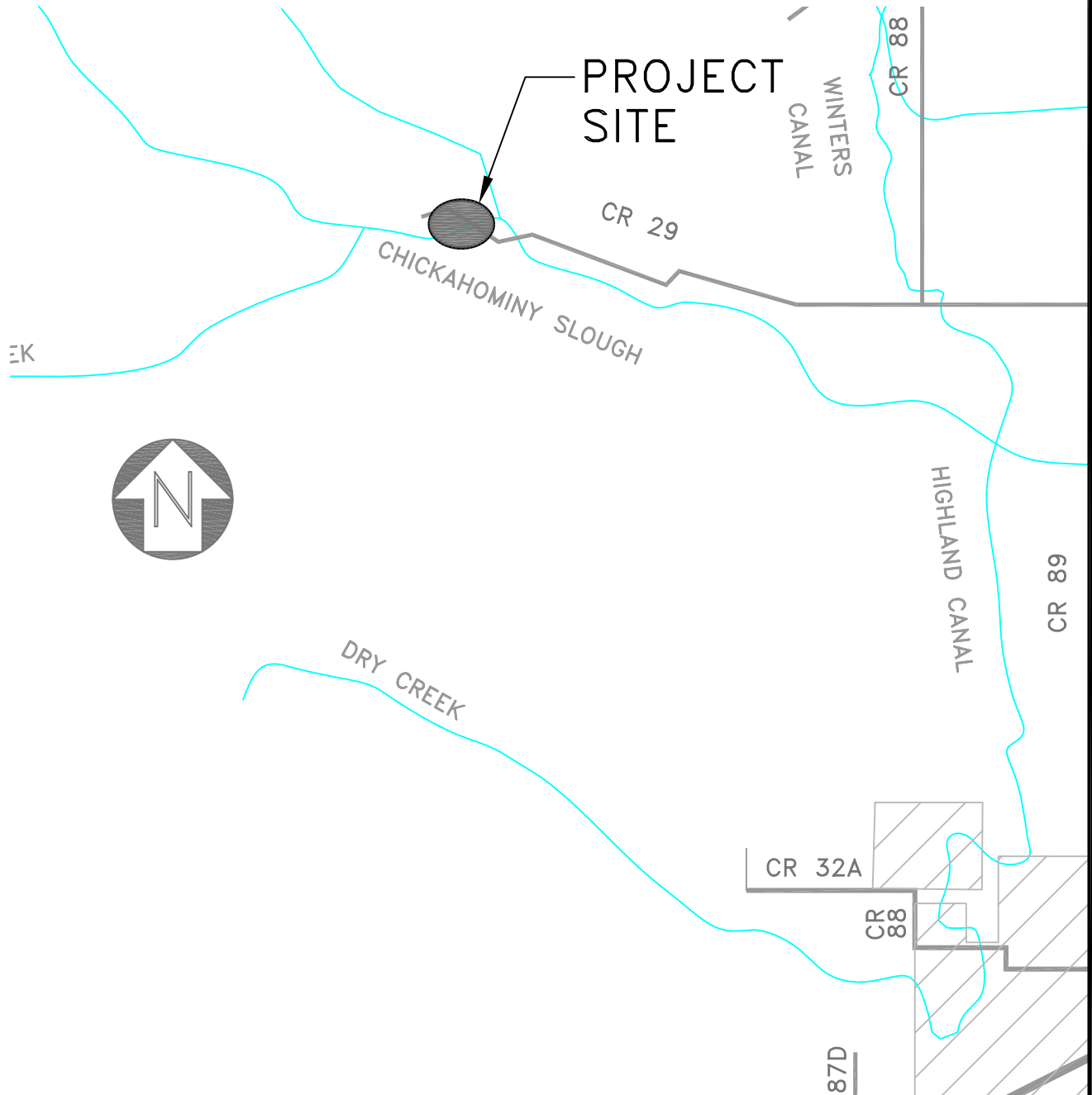
ROAD FUND PROJECT SITE MAPS

PROJECT: 2c

ROAD NO. OR NAME: County Road 29 over Salt Creek

ESTIMATED COST: \$250,000

BRIDGE NO.: 22C-104



DESCRIPTION OF WORK: Preliminary Engineering for Bridge Replacement/ Temporary Bridge

NOTES: 88.57% Reimbursement from Federal Fund, 11.43% from County Road Funds.

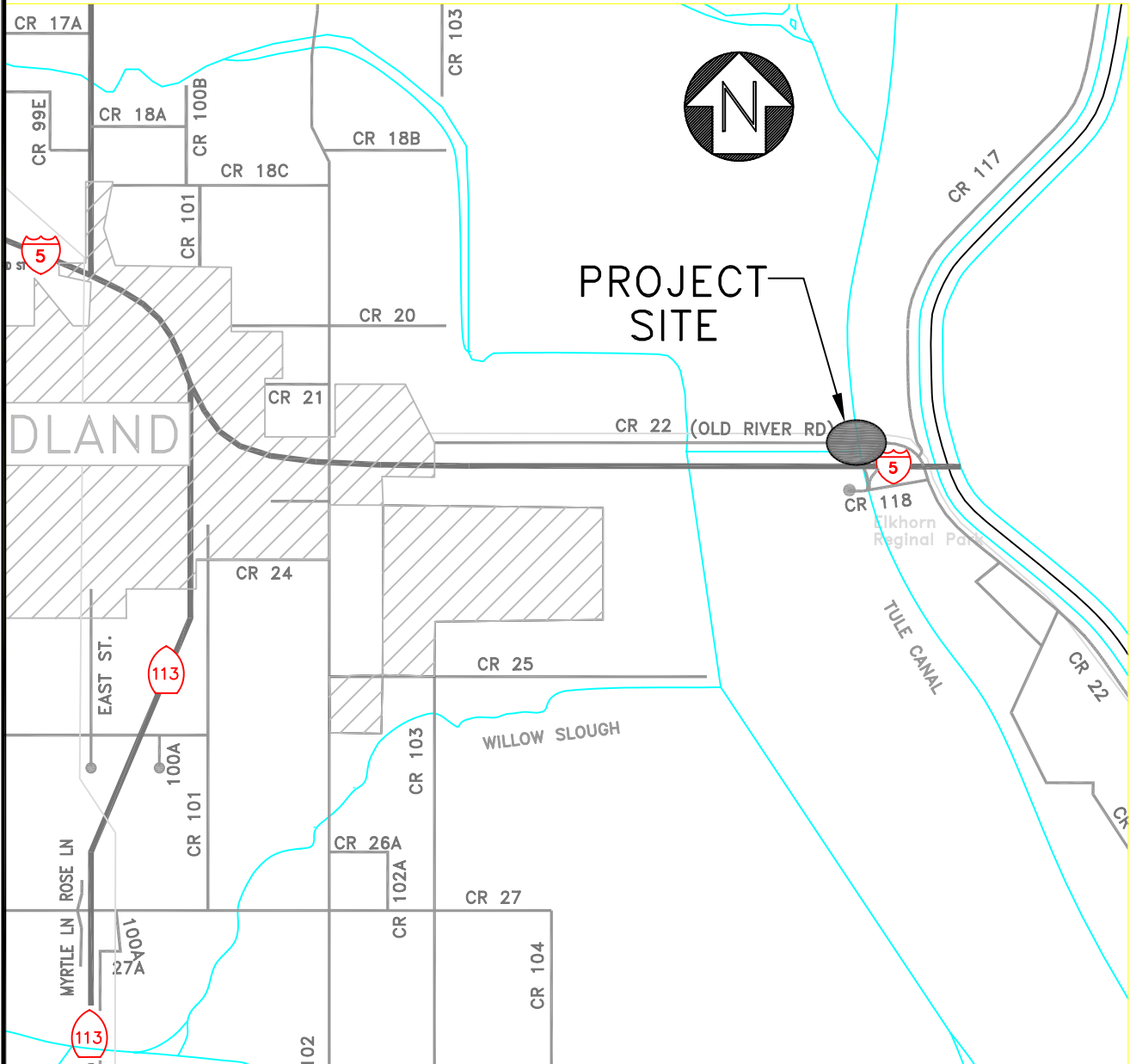
ROAD FUND PROJECT SITE MAPS

PROJECT 2j

ROAD NO. OR NAME: C.R.22, Tule Canal Bridge

ESTIMATED COST: \$20,000

BRIDGE NO. 22C-53



DESCRIPTION OF WORK: Maintain Habitat Restoration Sites as Mitigation for Tule Canal Bridge Construction.

NOTES: 80% Reimbursement from Federal Funds. 20% from County Funds.

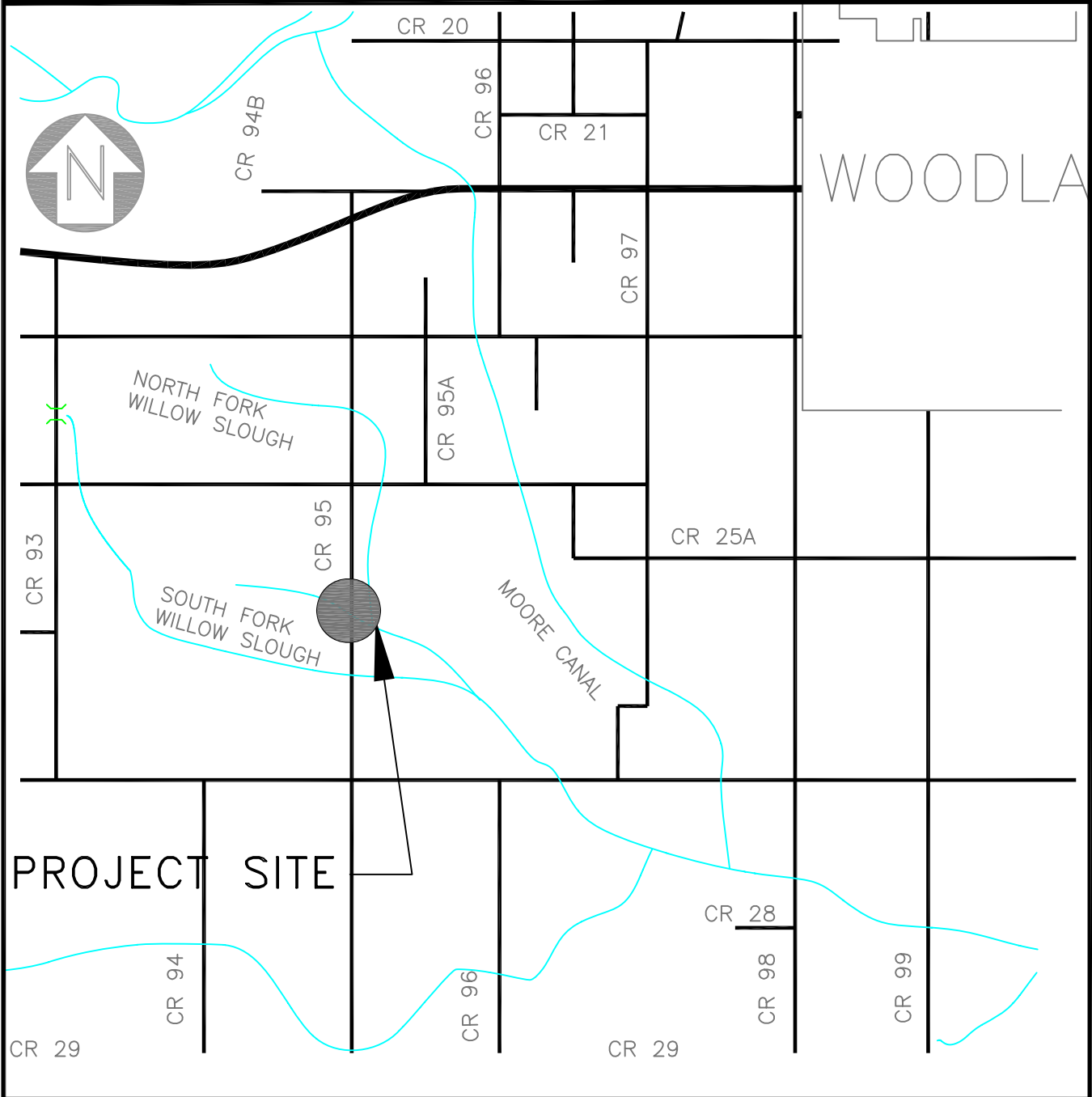
ROAD FUND PROJECT SITE MAPS

PROJECT: 2a

ROAD NO. OR NAME: County Road 95 over South Fork Willow Slough

ESTIMATED COST: \$700,000

BRIDGE NO.: 22C-122



DESCRIPTION OF WORK: Construction of Bridge Replacement

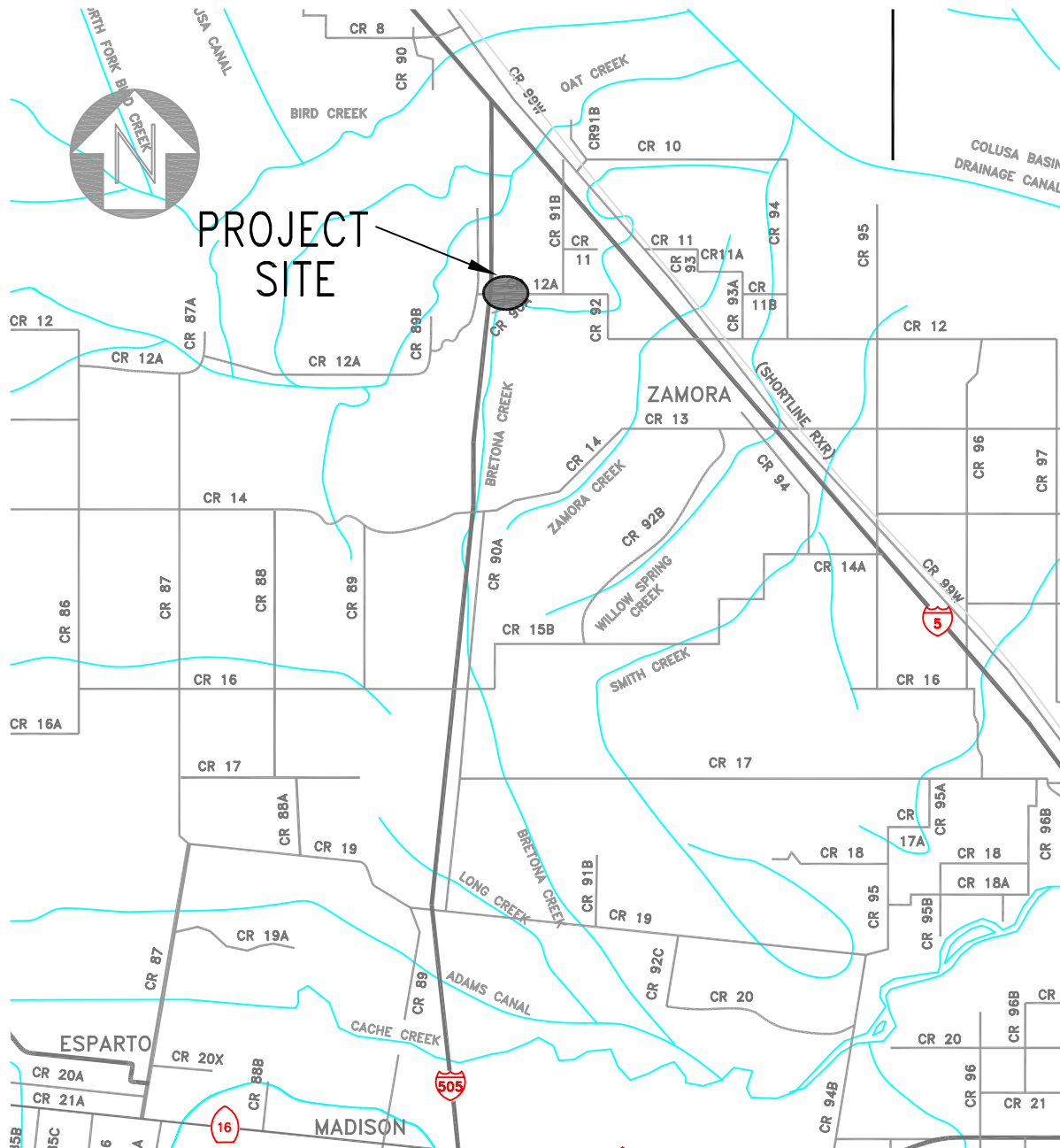
NOTES: 88.53% Reimbursement from Federal Fund, 11.47% from County Road Funds.

ROAD FUND PROJECT SITE MAPS

PROJECT: 2f

ROAD NO. OR NAME: CR 90A Bridge over Bretona Creek

ESTIMATED COST: \$50,000



DESCRIPTION OF WORK: Preliminary Engineering & Environmental Studies

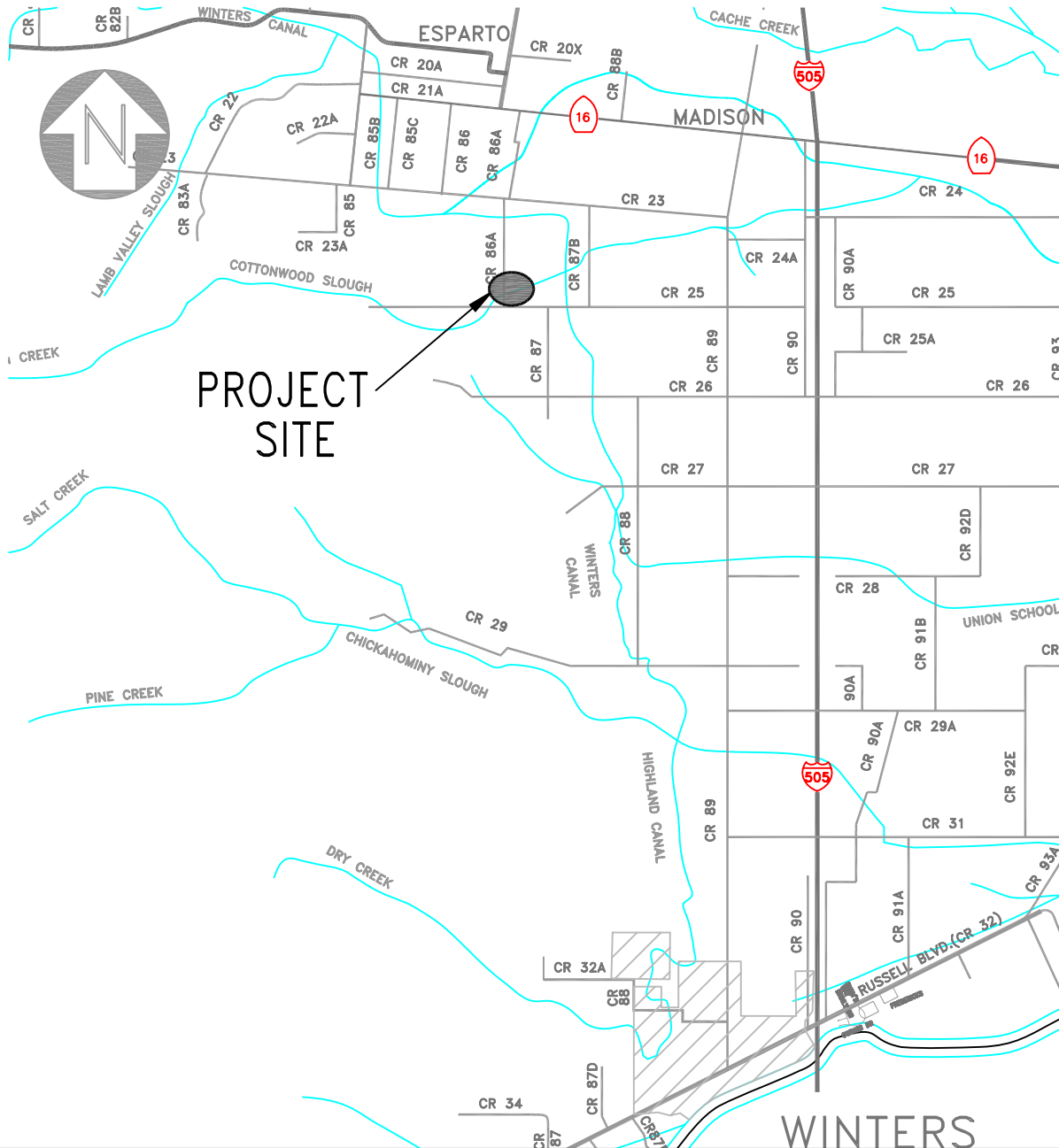
NOTES: 88.53% Reimbursement from Federal Fund, 11.47% from County Road Funds.

ROAD FUND PROJECT SITE MAPS

PROJECT: 2g

ROAD NO. OR NAME: CR 86A Bridge over Cottonwood Slough

ESTIMATED COST: \$50,000



DESCRIPTION OF WORK: Preliminary Engineering & Environmental Studies

NOTES: 88.53% Reimbursement from Federal Fund, 11.47% from County Road Funds.

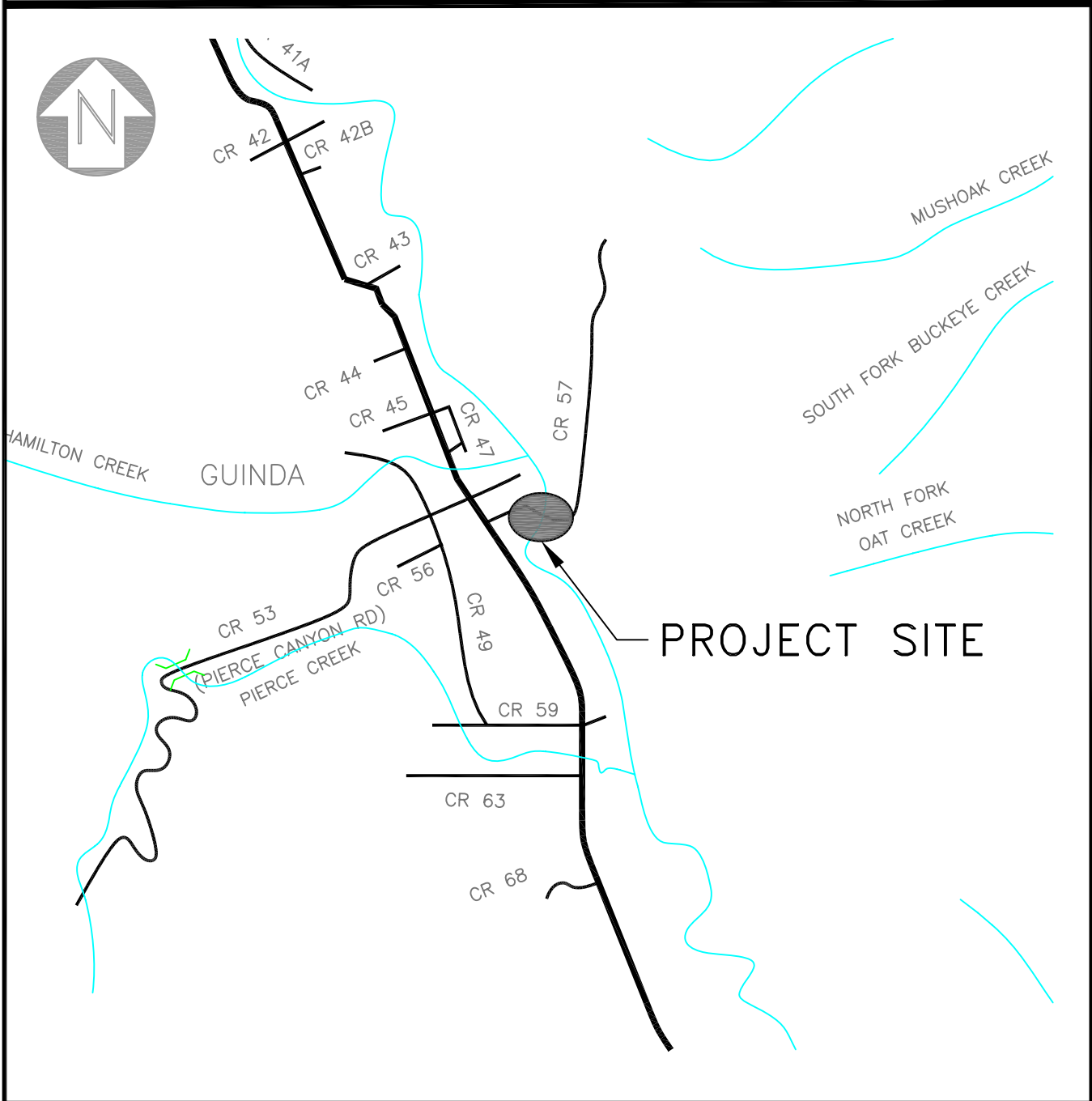
ROAD FUND PROJECT SITE MAPS

PROJECT: 2b

ROAD NO. OR NAME: County Road 57 over Cache Creek (Guinda Bridge)

ESTIMATED COST: \$225,000

BRIDGE NO.: 22C-074



DESCRIPTION OF WORK: Preliminary Engineering for Bridge Replacement

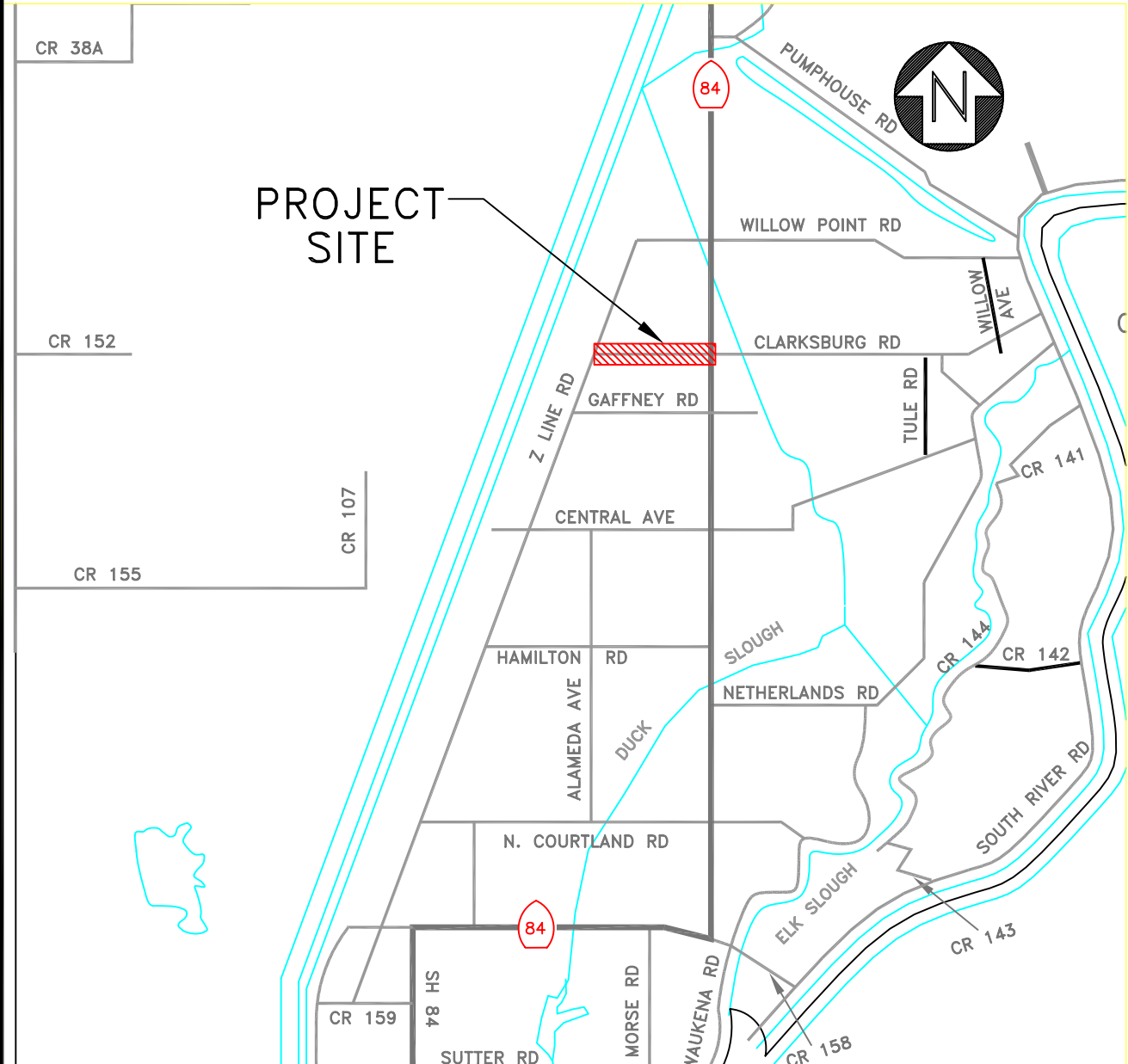
NOTES: 100% Reimbursement from Federal Funds.

ROAD FUND PROJECT SITE MAPS

PROJECT 3k

ROAD NO. OR NAME: CLARKSBURG RD, Z LINE RD TO SR 84

ESTIMATED COST: \$25,000



DESCRIPTION OF WORK: Complete Chip Seal & Reconstruct

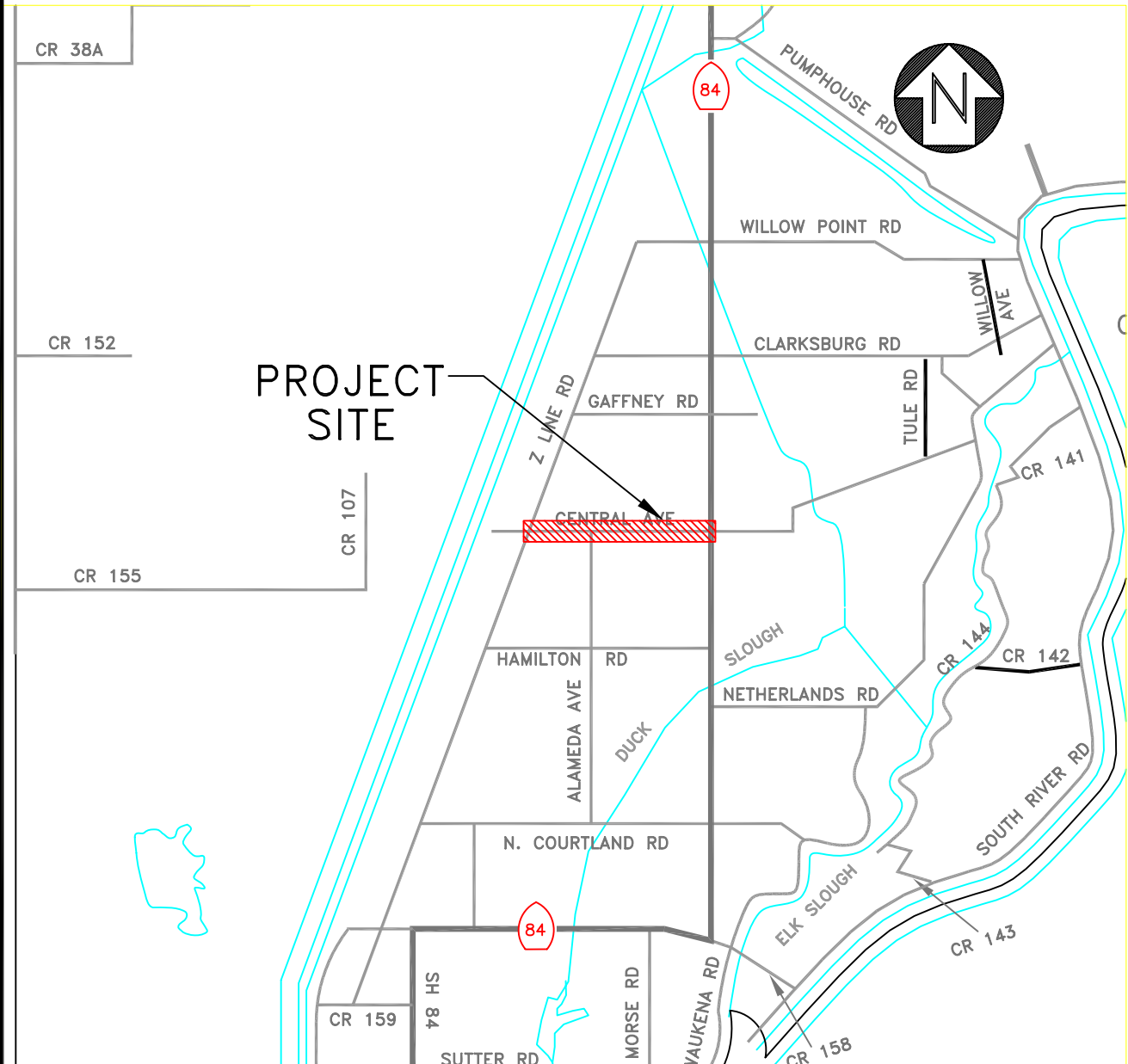
NOTES: County funds.

ROAD FUND PROJECT SITE MAPS

PROJECT 3h

ROAD NO. OR NAME: CLARKSBURG RD, Z LINE RD TO SR 84

ESTIMATED COST: \$200,000



DESCRIPTION OF WORK: Complete Chip Seal & Reconstruct

NOTES: County funds.

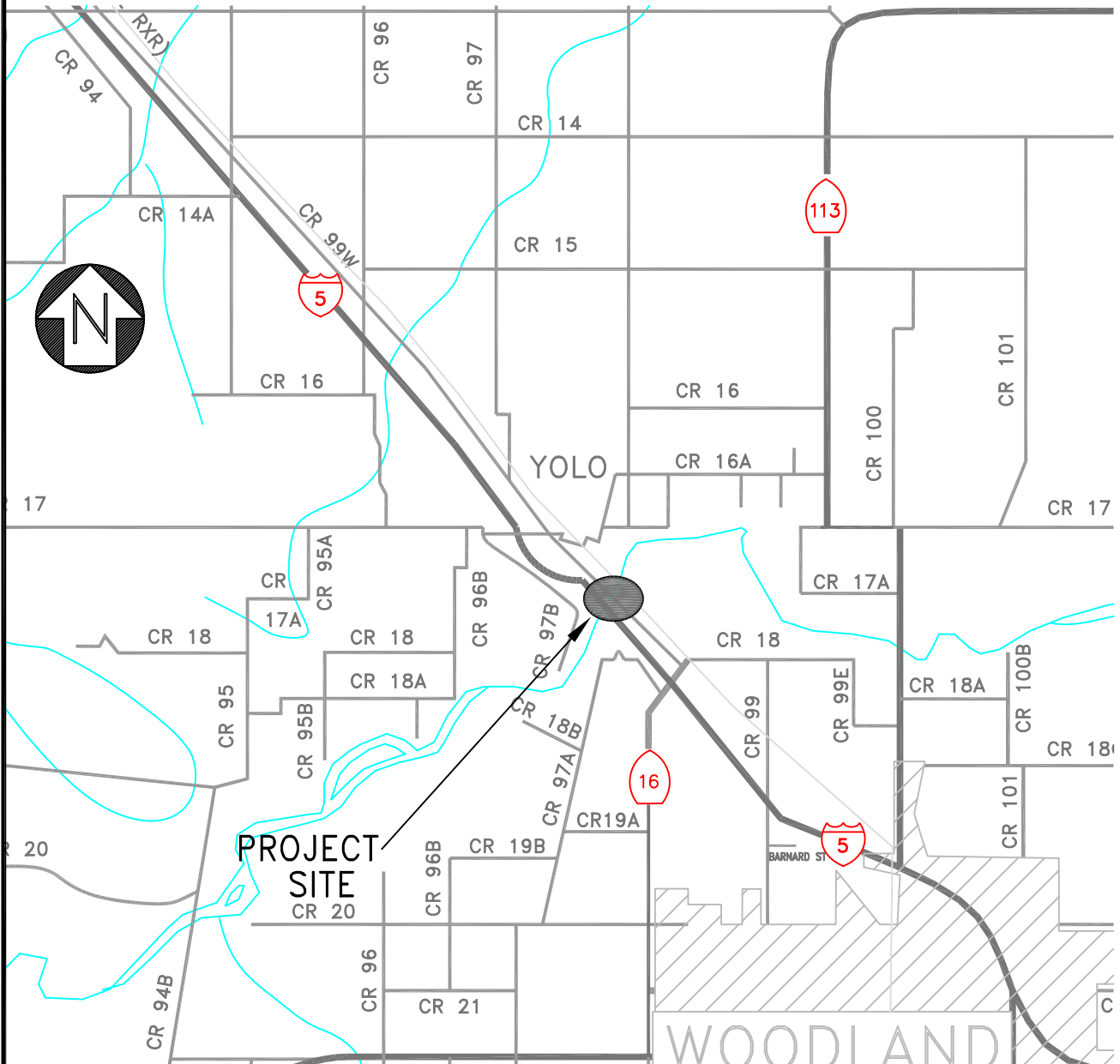
ROAD FUND PROJECT SITE MAPS

PROJECT 2i

ROAD NO. OR NAME: C.R.99W, Cache Creek Bridge

ESTIMATED COST: \$20,000

BRIDGE NO. 22C-22



DESCRIPTION OF WORK: Maintenance of Habitat Mitigation

NOTES: 80% Reimbursement from Federal Funds. 20% Reimbursement from STIP Funds

