

**DELVE INTO THE PAST
EXPLORE. CONNECT. CELEBRATE.**

Start your journey at the Yolo County Archives. Whether you are researching your family history or looking for historical government records, the Yolo County Archives is your primary source for the history of Yolo County.

Thousands of unique reference and research resources to help you learn more about history, people, places, and cultures of Yolo County await you at:

The Yolo County Archives

226 Buckeye Street
Woodland, CA 95695

Open to the public **by appointment** on

TUESDAYS

9:00 a.m. - 1:00 p.m.

and

THURSDAYS

12:00 p.m. - 4:00 p.m.

Call or email us for your appointment today.

(530) 666-8010

archives@yolocounty.org



**YOLO COUNTY
LIBRARY**

Connecting People and Ideas

YOLO COUNTY ARCHIVES



**YOLO COUNTY
LIBRARY**

Connecting People and Ideas

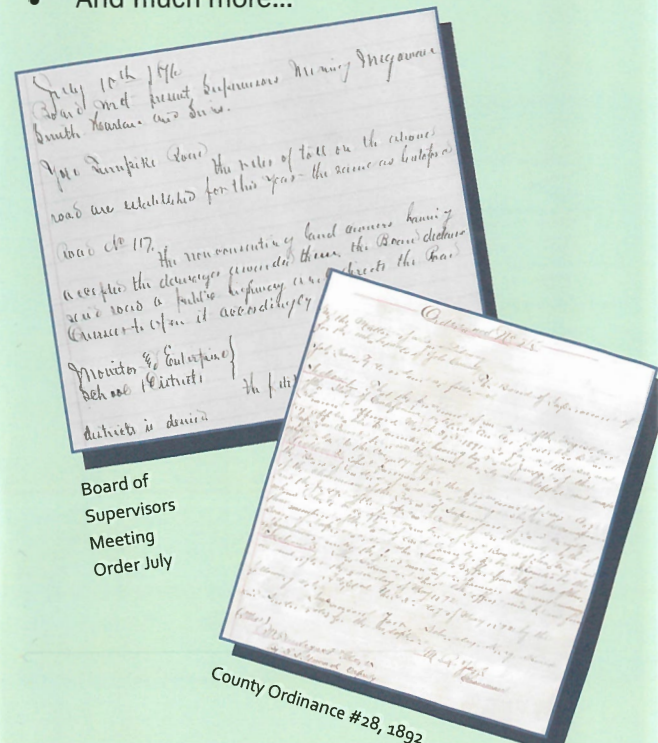
**Government Documents Collection
MINE THE ARCHIVES**

Looking for information on economics, geography, history, or agriculture?

Yolo County is fortunate that many of its earliest records have been preserved. The County has made a commitment to continue the collection of historical records, offering access to one of the most complete collections of County Records in California.

Government documents you will find here are:

- Board of Supervisors records (1850 - 2003)
- County Clerk/Recorder records
- Superior Court records
- Agricultural Commission reports
- Tax rolls
- Great Registers
- Naturalization and immigration records
- Board of Education records
- And much more...



Board of Supervisors Meeting Order July

County Ordinance #28, 1892

**Special Interest Collections
CELEBRATE COMMUNITY**

The Yolo County Archives has several unique collections donated by individuals and community organizations that highlight Yolo County's rich history of cultural and social diversity.

Multicultural Collections

Explore our growing collections that focus on themes such as:

- The Japanese American Experience
- African American Communities of the Capay Valley and beyond
- Immigrant Contributions to Agriculture and Business



The Japanese Community of Willets c. 1930s

Military Collections

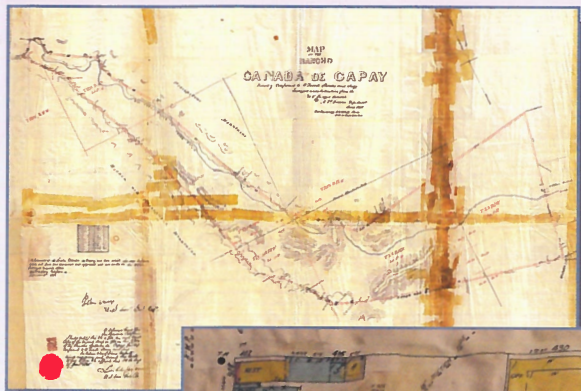
Numerous collections offer insight into the lives of county veterans from the Civil War to WWII and look at life in Yolo County during WWI and WWII.

Community Clubs and Organizations

Yolo County residents are committed to community engagement and volunteerism that reaches back to the earliest days of the county. Investigate the history of clubs like:

- The Soroptimist Club of Woodland
- The Knights Landing Garden Club
- The Marine Corps League Detachment

Map Collection FIND YOURSELF HERE



1857 Survey Map of the Rancho Cañada de Capay



1926 Sanborn Fire Map of Woodland



Assessors Map of Reclamation District 307

Maps are excellent sources of information for many different types of research. Our extensive map collection includes:

- Official maps of the county
- Tax Assessor maps
- Survey maps of the early Ranchos
- Plat maps of cities and towns
- Sanborn fire insurance maps
- And many, many more

Genealogy Collection TRACE YOUR ROOTS

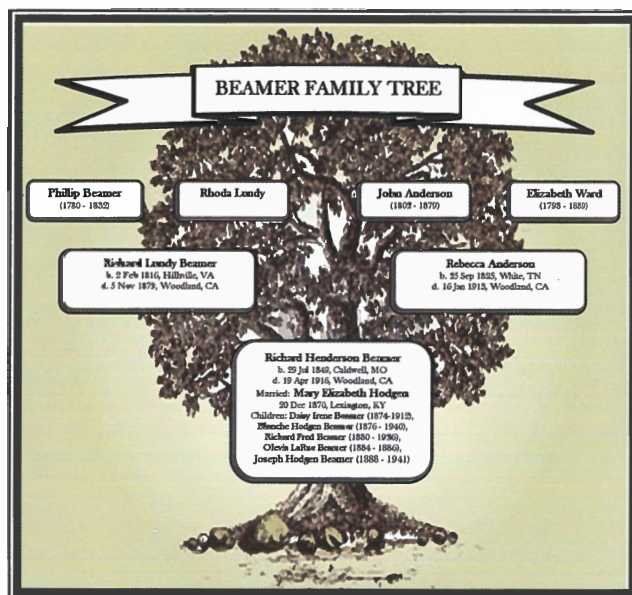
Resources for both the novice and the expert family history researcher are gathered here in one place to help you trace your family tree. Uncover clues to your past through census records, marriage records, deeds and mortgages, church and cemetery records, probate and court records, and more.

Obituary Collection

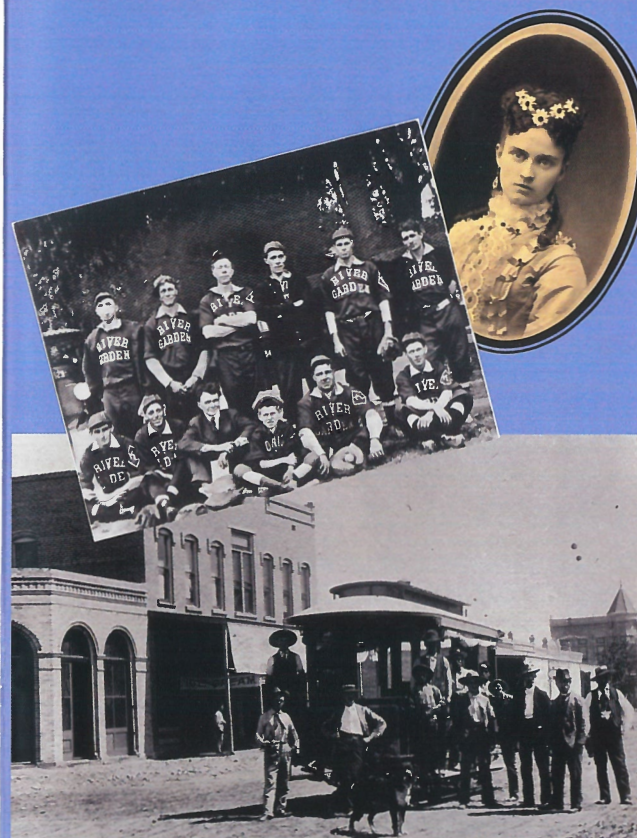
The Archives has an incredible collection of over 36,000 obituaries from newspapers throughout the county dating back to the 1800s and filed in alphabetical order.

Ancestry.com

We are proud to offer free access to Ancestry.com by appointment. Call (530) 666-8010 for your appointment today.



Photograph Collection HISTORY COMES ALIVE



The Yolo County Archives houses more than 5000 images from public and private collections. Many photographs date back to the late 1800s and early 1900s providing social, economic, and cultural insights that may not be available from other records.

We appreciate that many Yolo County families and corporations, such as River Garden Farms and the West Sacramento Land Company, who have contributed photographs to our extensive collection. Other subjects in this collection include: architecture; towns; people, clubs and organizations; holidays; disasters; and many more.

Local History Collection DISCOVER OUR PAST

The Yolo County Archives has an excellent collection of primary and secondary sources available to anyone interested in the history of Yolo County.

We maintain subject files on numerous aspects of our shared experience including:

- Agriculture
- Historic landmarks
- Mining
- Horse racing
- Churches
- Railroads

Our large collection of reference material is full of informative and hard-to-find publications, as well as many titles by local authors covering subjects ranging from our history prior to statehood, native plants and wildlife, biographies of early residents, and more.

Support

**KNOW ARCHIVES,
KNOW HISTORY**

The Friends of the Yolo County Archives is a nonprofit corporation, founded in 1987, whose purpose is to support the services and facilities of the Yolo County Archives and to preserve, protect, and ensure the widest possible use of the county's historical records.

Help the Archives by volunteering to work in the Archives, becoming a member, or making a donation to the Friends at the address below. Information brochures with membership application are available at the Archives.

The Friends of the Yolo County Archives
226 Buckeye Street
Woodland, CA 95695