

Annual Update: Yolo County Maternal Child and Adolescent Health Data

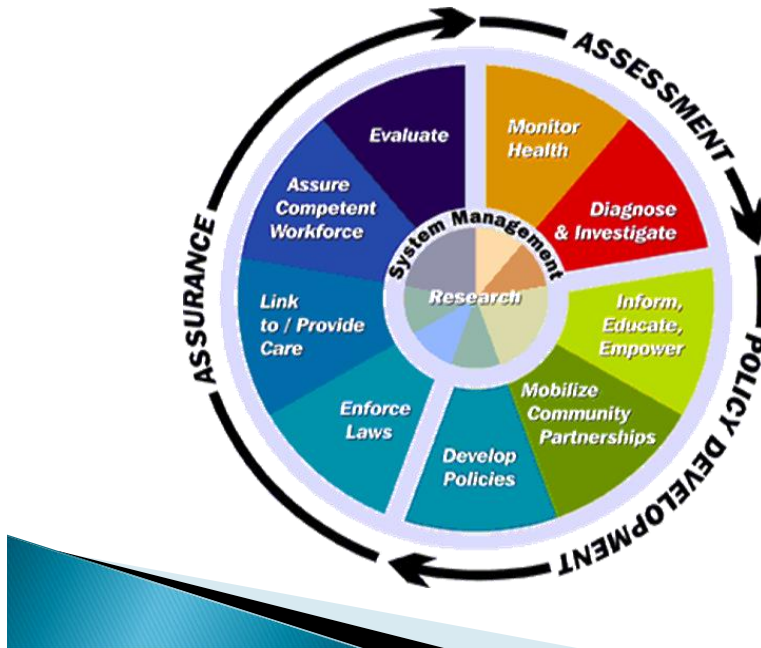
MCAH Advisory Board Retreat
January 20, 2016

Jan Babb, MSN, RN, PNP
MCAH Director
Community Health Branch Director
Yolo County HHSA



Conceptual Framework for MCAH



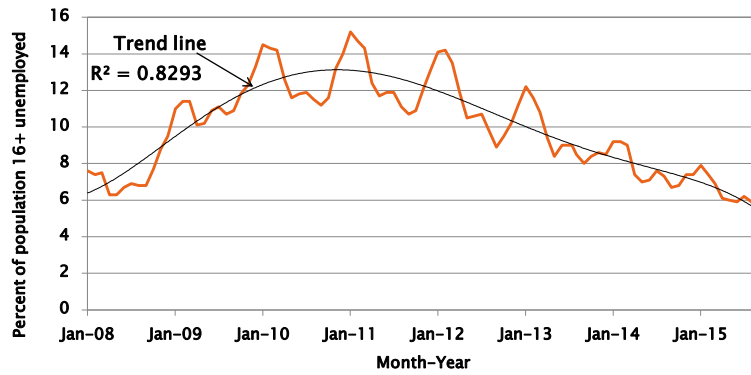


3

Health Indicators

- ▶ A measure that reflects the state of health in a defined population
- ▶ Health indicators INDICATE larger problems that may require action
- ▶ Standard public health indicators allow:
 - Comparison of health status between populations
 - Quantification of trends and progress toward goals (Healthy People 2020)
- ▶ Health indicators do not explain the cause(s) or the problem(s) they identify.

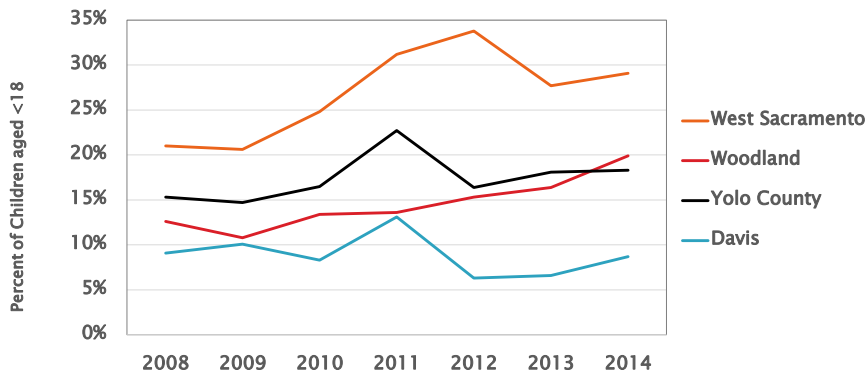
Unemployment Rate, Yolo County, 2008–2015



Source: Bureau of Labor Statistics

5

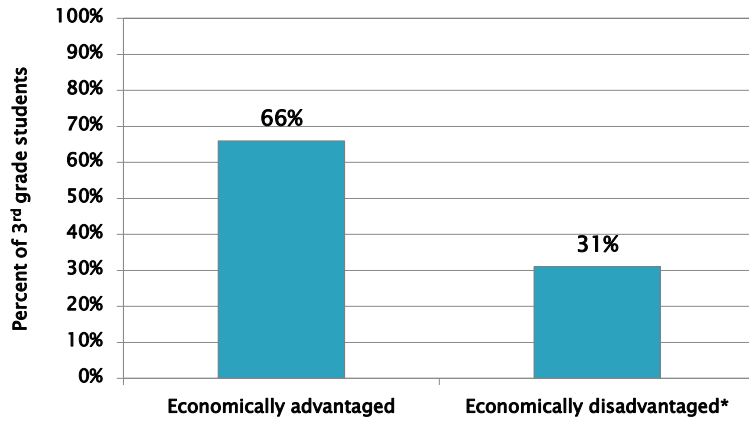
Percent of Yolo County Children ≤100% of Federal Poverty Level by City, 2008–2014



Source: US Census, American Community Survey, Table B17001 (3-year estimates; 1-year for Yolo County)

6

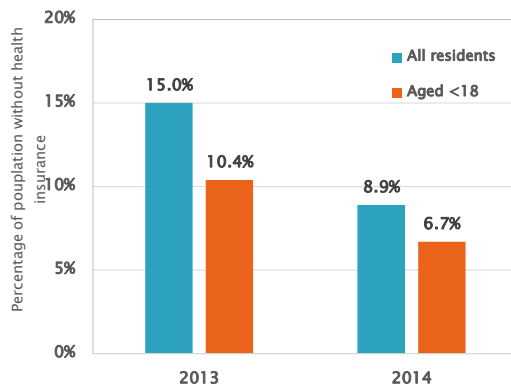
3rd Grade Reading Proficiency By Economic Status – Yolo County, 2013 (no new data)



*Neither of the student's parents has received a high school diploma OR the student is eligible for the free or reduced-price lunch program . Source: <http://www.kidsdata.org>

7

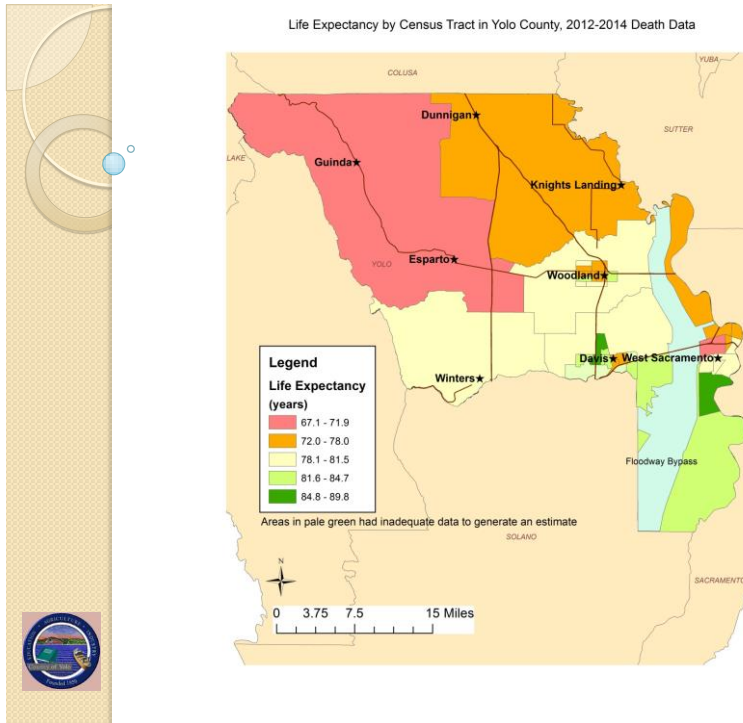
Percent of Yolo County Residents without Health Insurance, 2013 vs. 2014



20% of adult residents in the October 2014 healthcare access survey were without health insurance. 25% of the population enrolled in MCAL as of December 2015

Source: American Community Survey, US Census, 1-year estimate, Table DP03.

8

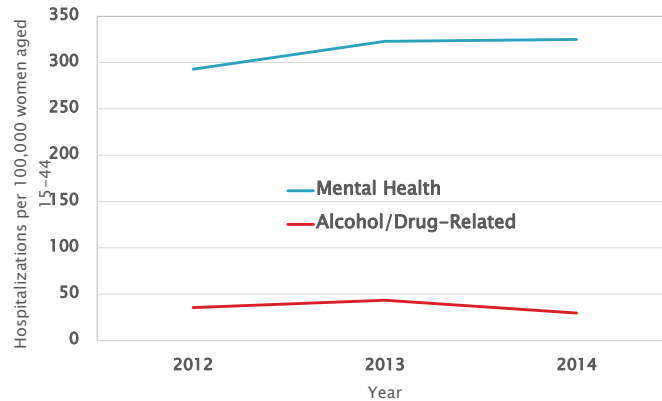


Maternal and Women's Health

- » Mental health/substance use
- » Perinatal mood and anxiety Disorders
- » Domestic violence
- » Late prenatal care
- » Overweight/obesity
- » Diabetes

10

Mental Health & Alcohol- or Drug-Related Hospitalization Rates, Yolo County Women Aged 15 to 44 yrs



Mental health admissions increasing since 2012 ($R^2=0.80$)

Source: Office of Statewide Planning & Development (OSHPD)

11

Perinatal Depression – 2012 (no update)

For the Greater Sacramento Region (El Dorado, Placer, Sacramento, Sutter, Yolo, Yuba):

- 14.0% of women report prenatal depression (95% CI 10.0 - 18.0)
- 13.9% of women report postnatal depression (95% CI 10.4 - 17.4)

Data Source: Maternal and Infant Health Assessment Survey 2012
Prepared by: Maternal, Child and Adolescent Health Program,
Center for Family Health, California Department of Public Health

12

Domestic Violence Calls for Assistance: 2008 – 2014

| Location | Rate per 1,000 persons | | | | | | |
|-------------|------------------------|------|------|------|------|------|------|
| | 2008 | 2009 | 2010 | 2011 | 2012 | 2013 | 2014 |
| California | 6.8 | 6.7 | 6.6 | 6.3 | 6.2 | 4.0 | 4.1 |
| Yolo County | 5.9 | 6.6 | 7.0 | 6.8 | 6.9 | 5.2 | 4.9 |

Definition: Number of domestic violence calls for assistance per 1,000 adults aged 18-69.

Data Source: Criminal Justice Statistics Center, <https://oag.ca.gov/crime/cjsc/stats/>

13

Domestic Violence Calls for Assistance, by City: 2008 – 2014

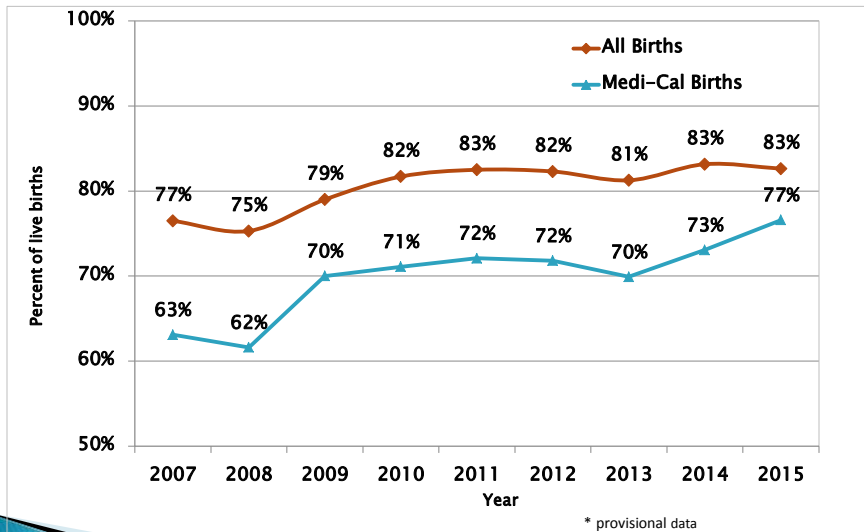
| Locations | Year | | | | | | |
|-----------------|------|------|------|------|------|------|------|
| | 2008 | 2009 | 2010 | 2011 | 2012 | 2013 | 2014 |
| Davis | 205 | 214 | 198 | 173 | 177 | 185 | 198 |
| West Sacramento | 244 | 406 | 412 | 410 | 383 | 410 | 392 |
| Winters | 30 | 33 | 33 | 60 | 40 | 44 | 35 |
| Woodland | 250 | 217 | 255 | 246 | 305 | 339 | 322 |

Definition: Number of domestic violence calls for assistance from residents of all ages, by city.

Data Source: Criminal Justice Statistics Center, <https://oag.ca.gov/crime/cjsc/stats/>

14

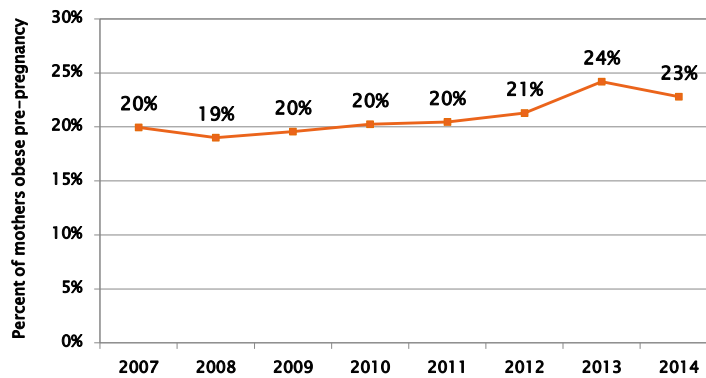
1st Trimester Entry into Prenatal Care



Source: Yolo County MCAH Program, Vital Records

15

Percent of Yolo County Mothers with Pre-Pregnancy BMI >30 (Obese), 2007-2014

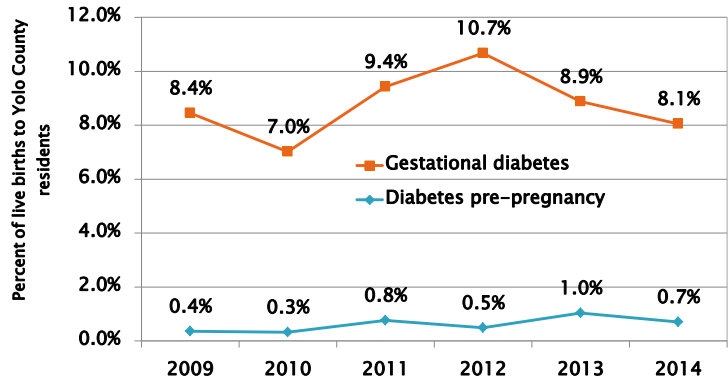


Significant for increasing trend (R-squared=0.73)

Source: Yolo County MCAH Program, Vital Records

16

Percent of Yolo County Births with Gestational or Pre-Pregnancy Diabetes as a Complicating Factor, 2007-2014



Previous increasing trend now reversed

Source: Yolo County MCAH Program, Vital Records

17

Percent of Yolo County Resident Births with Gestational Diabetes by Hospital (2014)

| Complication | California (2010) | SDH (n=856 births) | WMH (n=554 births) |
|----------------------|-------------------|--------------------|--------------------|
| Gestational Diabetes | 7% | 3.9% | 5.2% |

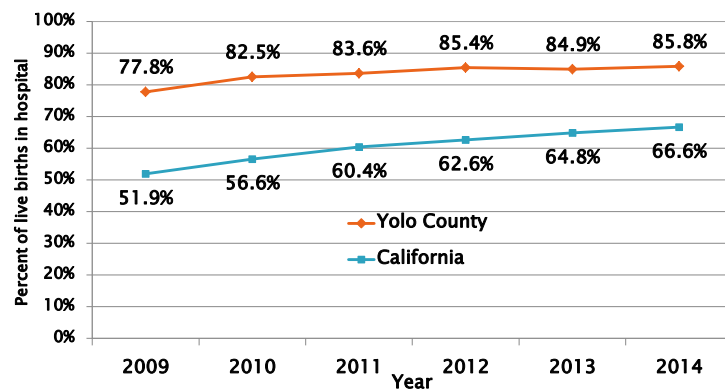
Source: Yolo County MCAH Program, Vital Records

Infant Health

- » Breastfeeding initiation
- » Exclusive breastfeeding duration
- » Low birth weight
- » Fetal and infant deaths

19

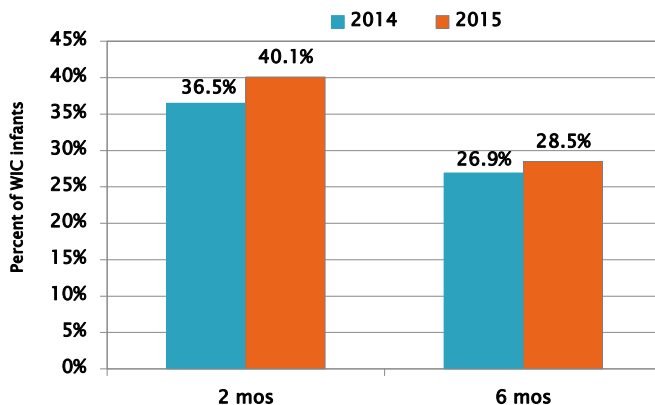
In-Hospital Exclusive Breastfeeding, Yolo County vs. California



Significant increasing trends for both Yolo County and state

Source: California Department of Public Health, In-Hospital Newborn Screening.

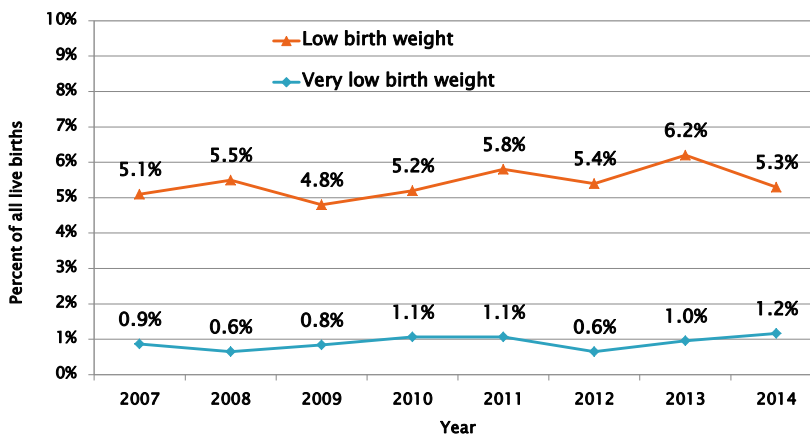
Exclusive Breastfeeding Duration, Infants receiving WIC, 2014-2015



Source: Yolo County WIC (Raptor database)

21

Low Birthweight Infants, Yolo County 2007-2014

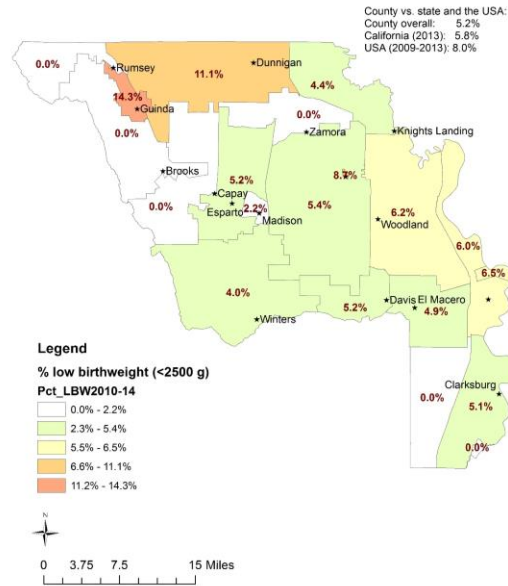


For LBW,
CA: 5.8% (2013) HP 2020 goal: 7.8%

Source: Yolo County MCAH Program, Vital

22

Percent of Births with Low Birthweight by ZIP Code, Yolo County, 2010-2014



Source: Yolo County MCAH Program, Vital Records

23

Birth Outcomes: Infant Death

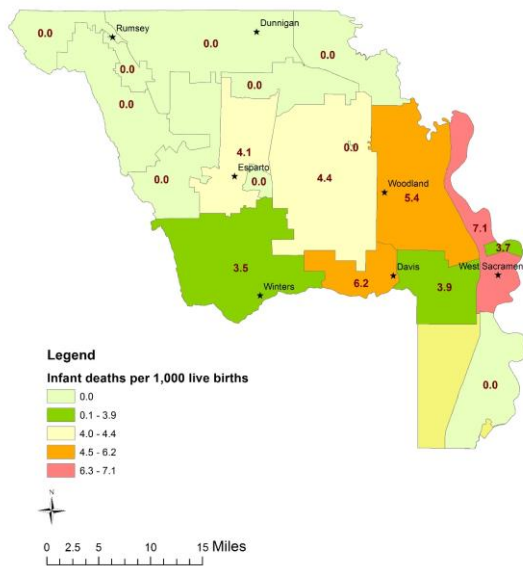
| Infant Death Outcomes | Yolo 2005-09 | Yolo 2010-14 | CA 2009-13 | HP 2020 Goal |
|-------------------------|--------------|--------------|------------|--------------|
| No. live births | 12727 | 12158 | 2537798 | |
| Neonatal deaths | 43 | 27 | 8362 | |
| Neonatal death rate* | 3.4 | 2.2 | 3.3 | 4.1 |
| Postneonatal deaths | 8 | 16 | 3657 | |
| Postneonatal death rate | 0.6 | 1.3 | 1.4 | 2.0 |
| All infant deaths | 51 | 43 | 12019 | |
| Infant mortality rate* | 4.0 | 3.5 | 5.4 | 6.0 |

*Deaths per 1,000 live births

Source: CDC Wonder database; Yolo County Health Department, Vital Records.

24

Infant Deaths per 1000 Live Births by ZIP, Yolo County, 2010-2014

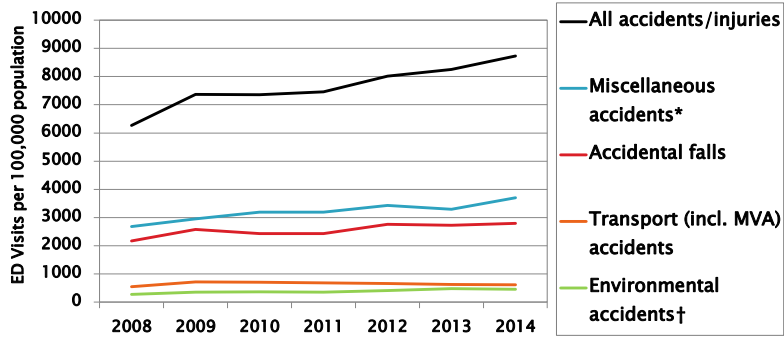


Source: Yolo County MCAH Program, Vital Records

Child health

- » Injury
- » Abuse/neglect
- » Overweight/obesity
- » Immunizations

Emergency Dept Pediatric Visit Rates for Accident & Injury, Yolo County 2008-14



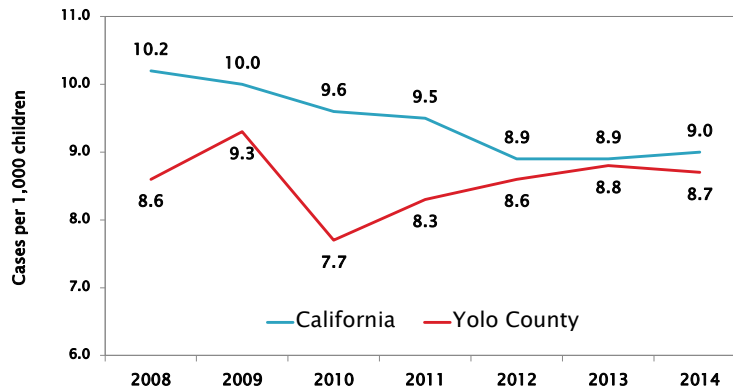
Hospitalization rates in the same time period have not increased

*Caused by falling/striking object/person, machinery, cutting/piercing instruments, electricity, radiation, repetitive stress.
 †Caused by excess heat or cold, outdoor exposure, neglect, flood, weather, poisonous plants, animal bites, travel/motion.

Data Source: OSHPD

27

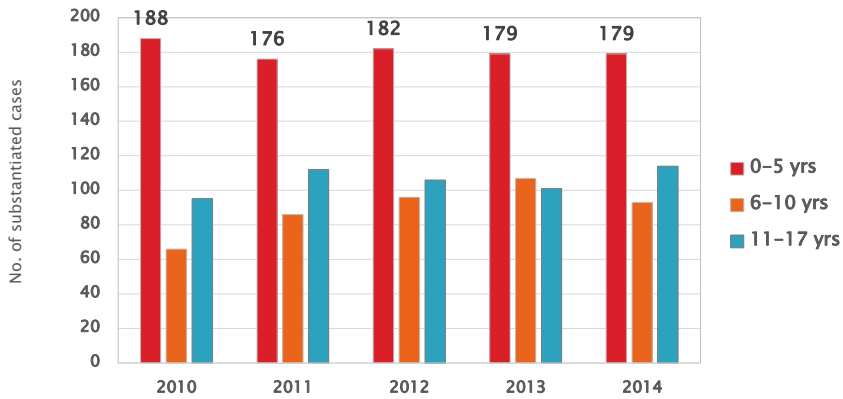
Substantiated Cases of Child Abuse and Neglect: 2008-14, Yolo County vs. CA



Data Source: <http://kidsdata.org> (Nov, 2015)

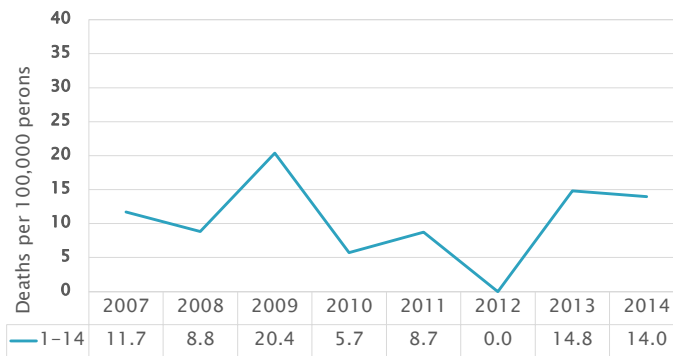
28

Substantiated Cases of Child Abuse and Neglect: 2010 – 2014, Yolo County



Data Source: <http://kidsdata.org> (Nov, 2015)

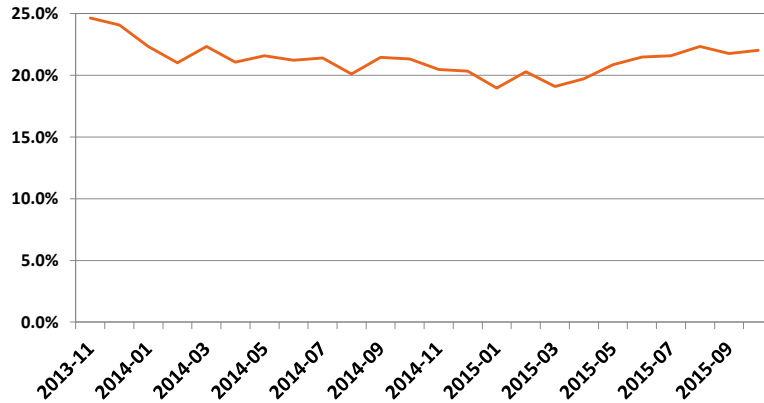
Childhood (age 1 to 14) Mortality Rates, Yolo County 2007-2014



Yolo Co. rate 2007-14: 10.5 per 100,000
State rate in 2013: 13.2 per 100,000

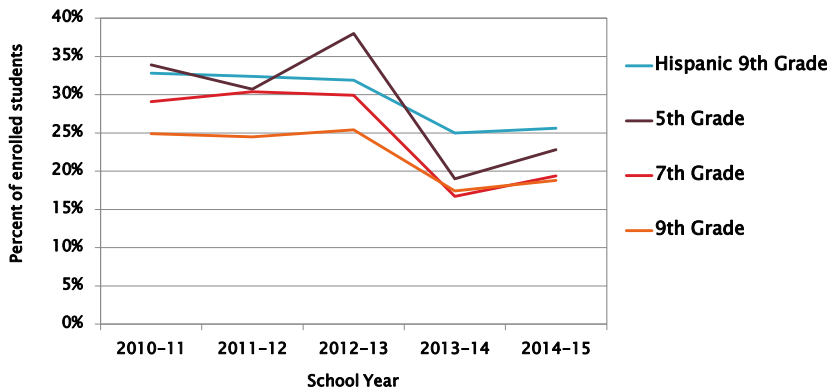
Source: CDPH Death Statistical Master File & Vital Records Business Information System (VRBIS), Yolo County resident deaths

Obesity – Percent of WIC Children Aged 4 years, Nov 2013–Oct 2015



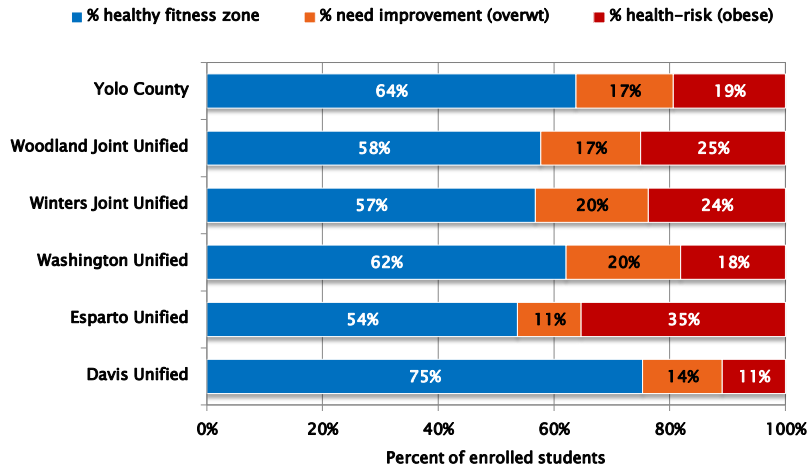
Source: Yolo County WIC (Raptor database), 2014-Oct 2015

Trends in Obesity for 5th, 7th & 9th Graders, Yolo County 2010–2014



Source: California Dept of Education, School Physical Fitness Test

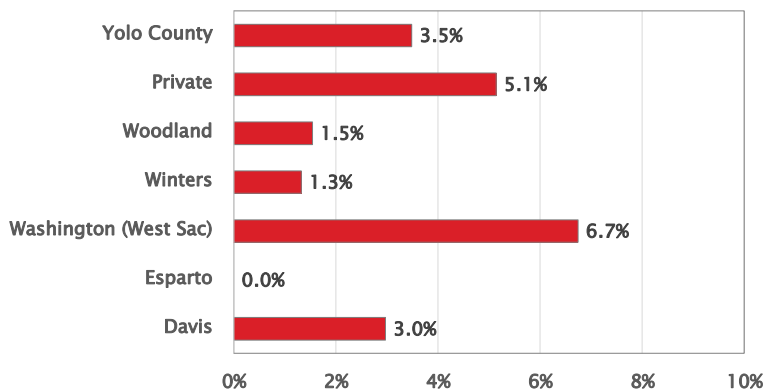
Body Composition of 7th Graders by District, Yolo County, 2014-15



Source: California Dept of Education, School Physical Fitness Test

33

Percent of Kindergarteners with Personal Belief Exemptions by School District, Yolo County 2015-16



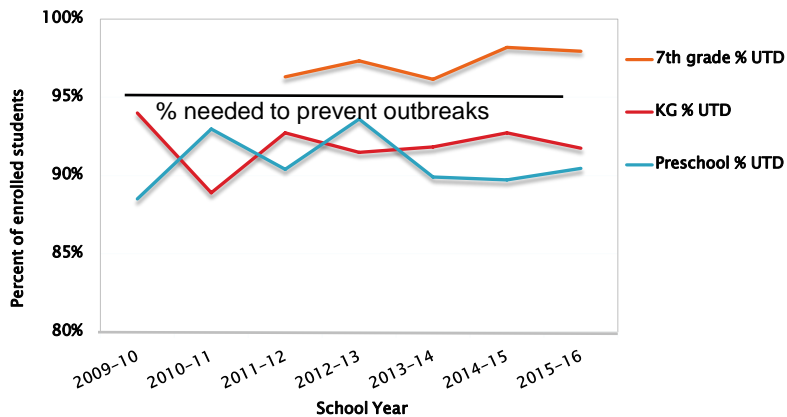
Source: CDPH Immunization Branch

Percent of Yolo County Kindergarteners Up-to-Date for Required School Vaccines, 2009-2015

| School District | 2009-10 | 2010-11 | 2011-12 | 2012-13 | 2013-14 | 2014-15 | 2015-16 | R ² | Trend |
|-----------------------|---------|---------|---------|---------|---------|---------|---------|----------------|-------|
| Davis | 92% | 92% | 92% | 93% | 94% | 93% | 94% | 0.56 | None |
| Esparto | 98% | 100% | 95% | 97% | 96% | 100% | 100% | 0.09 | None |
| Washington (West Sac) | 95% | 74% | 90% | 87% | 85% | 88% | 83% | 0.02 | None |
| Winters | 98% | 96% | 97% | 89% | 93% | 96% | 97% | 0.02 | None |
| Woodland | 96% | 97% | 98% | 96% | 98% | 97% | 96% | <0.01 | None |
| Private | 85% | 83% | 83% | 82% | 78% | 80% | 87% | 0.02 | None |
| Total | 94% | 89% | 93% | 92% | 92% | 93% | 93% | <0.01 | None |

Source: CDPH Immunization Branch

Percent of Enrolled Students Up-to-Date on Vaccines by Grade, Yolo County 2009-2015



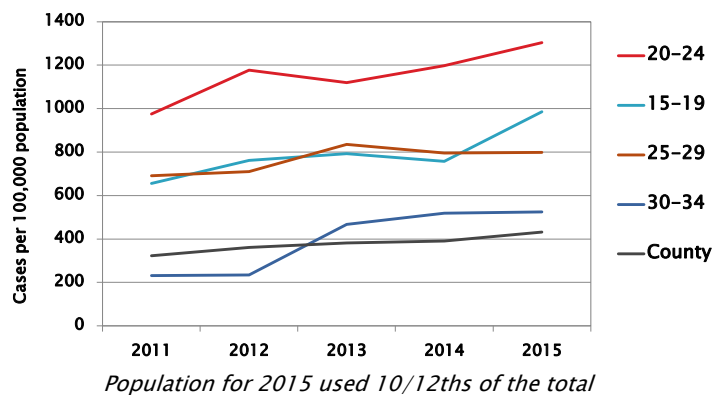
Source: CDPH Immunization Branch

Adolescent Health

- » Sexual health
- » Teen pregnancy

37

Chlamydia Rates for Ages under 35, Yolo County, 2011–Oct 2015

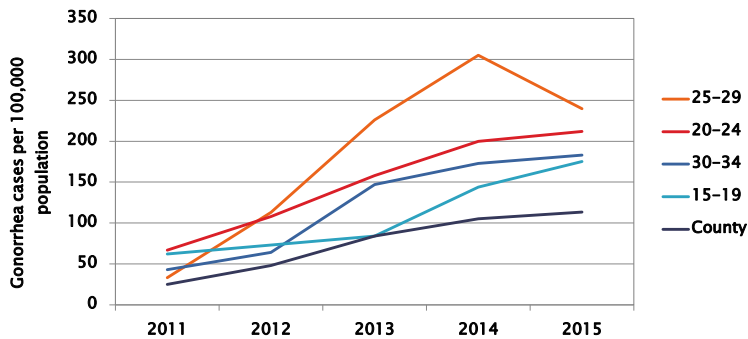


81% of 2015 cases in Yolo County occurred in 15 to 29-year-olds

Source: Yolo County Communicable Disease Control

38

Gonorrhea Rates for Ages <35, Yolo County, 2011–Oct 2015



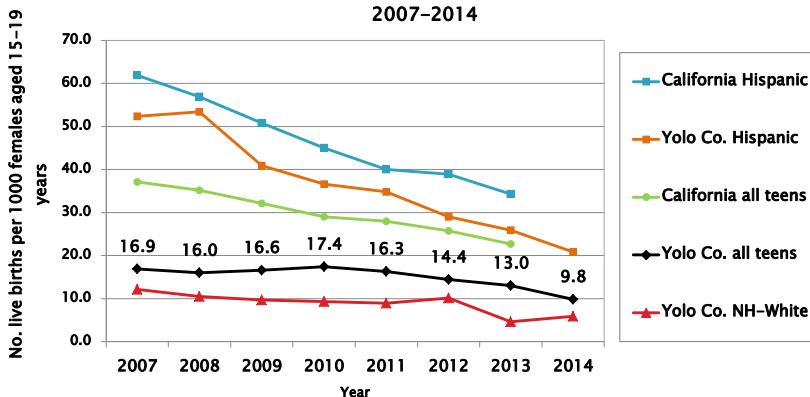
Pop size for 2015 used 10/12ths of the total estimated population

Increasing rates in all age groups except 25- to 29-year-olds
Largest increase for teens (15 to 19)

Source: Yolo County Communicable Disease Control

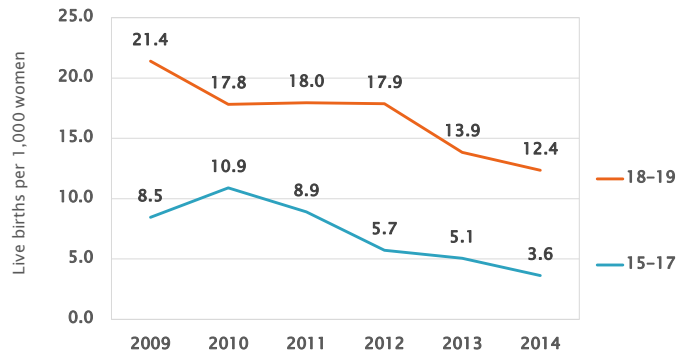
Trends in Teen Birth Rates

White and Hispanic Teen Birth Rates in Yolo County and California, 2007–2014



Source: Yolo County MCAH Program, Vital Records

Teen Birth Rates by Age Group, Yolo County, 2008-14



The rate for 15- to 17-year-olds has dropped by 67% since 2010
 The rate for 18- to 19-year-olds has dropped by 30% since 2010

Source: Yolo County MCAH Program, Vital Records

41

MCAH Program updates

- » Staffing
- Priority Areas
- Opportunities to get involved

42

MCAH Local Program Staff

- ▶ MCAH Coordinator: Anna Sutton
- ▶ MCAH Outreach Specialist for Adolescent Sexual Health: Ramy Hussein
- ▶ Jan Babb, Ashley Logins–Miller, Haydee Dabritz



43

Community Partnerships

- ▶ MCAH Advisory Board: Meets 3rd Wednesday AM, monthly; public meeting
- ▶ FIMR Team: Meets 2nd Thursday at lunchtime, ~ every other month; team members only
- ▶ Perinatal Mental Health Collaborative: Meets 1st Friday Monthly, 12:30–2; contact Anna for details
- ▶ Healthy Yolo Community Health Improvement Plan, workgroups in 3 priority areas: Chronic Disease prevention, Healthy Aging, Mental Health



44

MCAH Priority Areas



Access to
Mental Health
Services



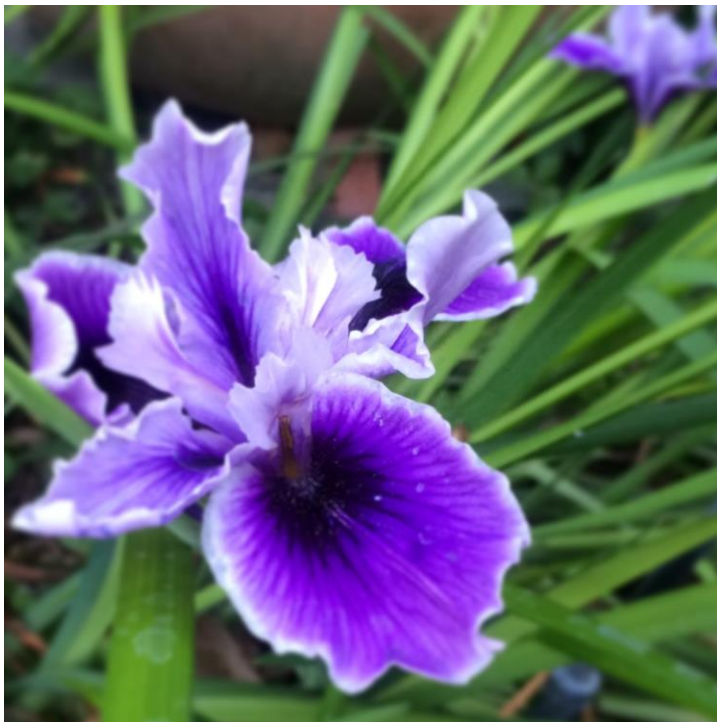
Perinatal Mood
and Anxiety
Disorders



Adolescent
Sexual Health



45



Thank you!