

Stephen R. Wee, Principal / President
Rand F. Herbert, Principal / Vice President
Meta Bunse, Partner
Christopher D. McMorris, Partner
Bryan T. Larson, Partner

February 9, 2016

RE: Rumsey Bridge Replacement Project, County Road 41, Rumsey (Caltrans Bridge No. 22C0003)

To Whom It May Concern:

The County of Yolo Department of Planning, Public Works & Environmental Services (County) has been conducting studies to address the rehabilitation or replacement of the Rumsey Bridge on County Road 41 over Cache Creek near Rumsey (Caltrans Bridge No. 22C0003, see attached location map.) The tied arch portion of the bridge was built in 1930, and the structure was lengthened in 1949. The Rumsey Bridge is eligible for listing in the National Register of Historic Places (NRHP) as a significant example of a concrete tied arch bridge construction in California, and it is considered a historic property under Section 106 of the National Historic Preservation Act. The bridge is also considered a historical resource under the California Environmental Quality Act (CEQA), as per CEQA Guidelines Section 15064.5.

Caltrans inspection reports have noted problems with extensive concrete spalls and exposed reinforcing steel on the existing arch bridge, attributed to poor-quality concrete and construction. The latest Caltrans inspection report recommends that the bridge be scheduled for extensive repairs and that consideration be given to replacing the structure. Structural analysis has determined that the bridge is not seismically stable, and is susceptible to failure from scouring of the footings. The bridge is eligible for rehabilitation or replacement under the Highway Bridge Program (HBP) administered by Caltrans.

The County retained Quincy Engineering, a bridge engineering firm, to analyze the bridge and assist in developing and evaluating alternatives to present to Caltrans for funding approval. On February 2, 2015, Yolo County staff and Quincy Engineering presented six alternatives for public review and consideration at the Rumsey Improvement Association meeting and subsequently sent out resident surveys regarding alternative preferences in April 2015. On July 28, 2015 the Board of Supervisors received a draft study summarizing the seismic analysis and alternatives, heard from interested members of the public, and provided direction to staff on the bridge type selection process. On December 12, 2015, the Yolo County Board of Supervisors selected *Alternative 3: Cast-in-Place Concrete Box Girder Bridge* to be installed on a new alignment upstream of the existing bridge. Alternative 3 includes demolishing the Rumsey Bridge following construction of the new bridge, and thus would cause an adverse effect to the historic bridge. The County Board of Supervisors selected Alternative 3 because rehabilitating the bridge would provide a shorter design life and require more ongoing maintenance

than a new bridge, and both rehabilitation and new arch-style replacement bridge alternatives were deemed less cost-effective options to provide safe public access across Cache Creek. Due to public safety concerns and costs associated with on-going maintenance of the deteriorating bridge, the County proposes to remove the existing bridge following completion of the new bridge.

JRP Historical Consulting, LLC has been retained to assist with Section 106 and CEQA compliance documentation. Section 106 requires communication with interested parties regarding potential project effects on historic properties. If you or your organization has information or concerns regarding the effect of the replacement project on the Rumsey Bridge, or on other historic resources in the project area that could be affected by this project, please respond in writing to the address provided above or via email at cmcmorris@jrphistorical.com within the next thirty days. Please note this is not a request for research, just for information. A list of organizations receiving this letter is also enclosed for your information. Thank you.

Sincerely,

A handwritten signature in blue ink, appearing to read "Chris Morris".

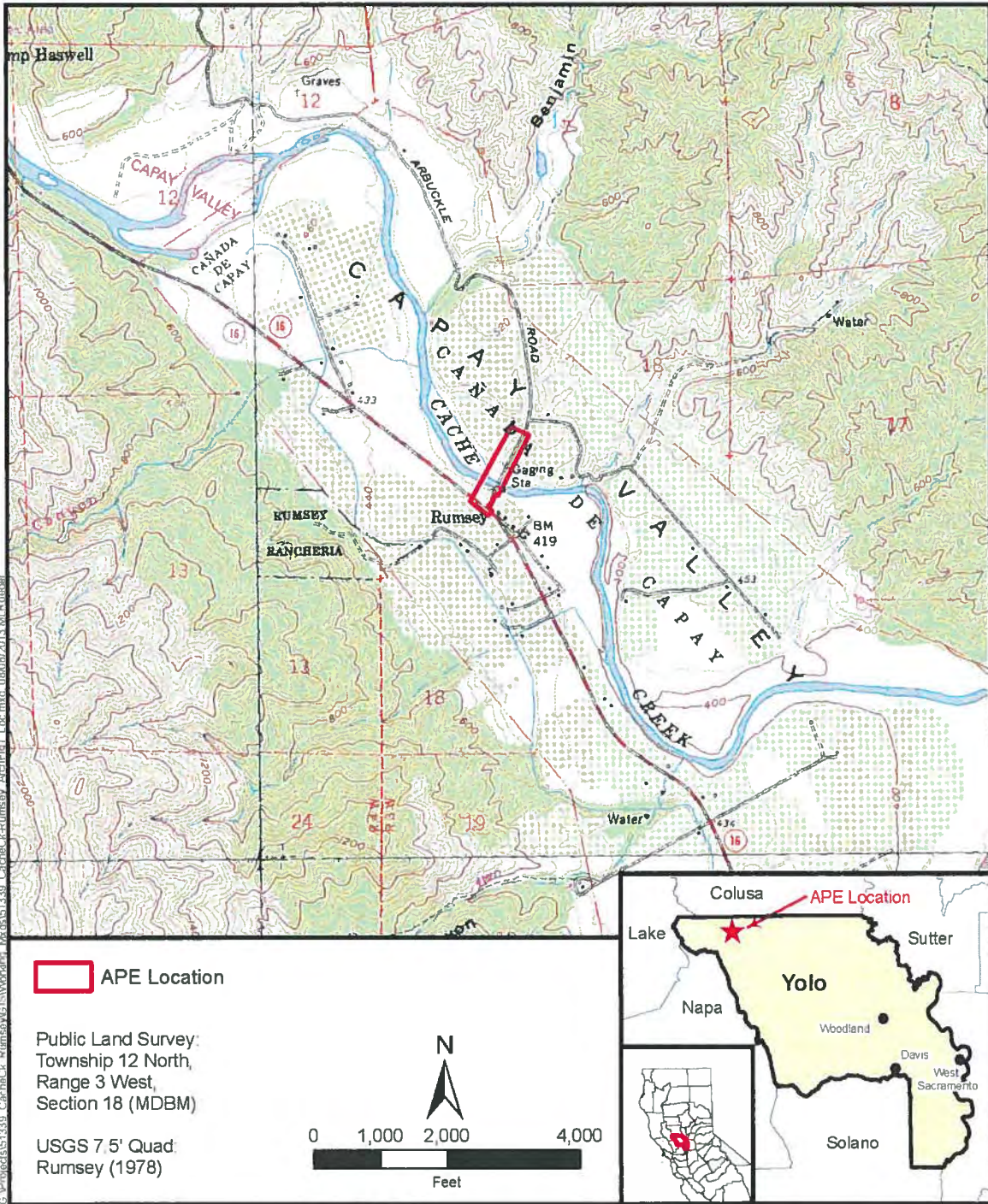
Christopher Morris
Partner / Architectural Historian

Enclosures: List of Recipients
Project Area Map

Rumsey Bridge Replacement Project

Organizations Receiving Letter Soliciting Input Regarding Historic Resources

Yolo County Historical Society P.O. Box 1447 Woodland, CA 95776 (530) 661-2212 khwoodland@aol.com	Rumsey Improvement Association PO Box 114 Rumsey, CA 95679 (530) 796-2285 (Hall Phone) info@rumseytownhall.com
The Greater Capay Valley Historical Society P.O. Box 442 Esparto, CA 95627 emonroe@greatercapayvalley.org	Capay Valley Vision P.O. Box 799 Esparto, CA 95627 (530) 787-3353 info@capayvalleyvision.org
Capay Valley General Plan Citizens' Advisory Committee c/o Staff Liaison Stephanie Cormier, Yolo County Planning, Public Works and Environmental Services Department 292 W Beamer Street Woodland, CA 95695 (530) 666-8850 Stephanie.cormier@yolocounty.org	Yocha Dehe Wintun Nation Tribal Historic Preservation Officer: P.O. Box 18 Brooks, CA 95606 THPO@yochadehe-nsn.gov



County Road 41 (Bridge No. 22C-0003) over Cache Creek Bridge Replacement Project

Figure 1
APE Location and Vicinity Map