

Yolo County Mortality Report: MCAH Highlights

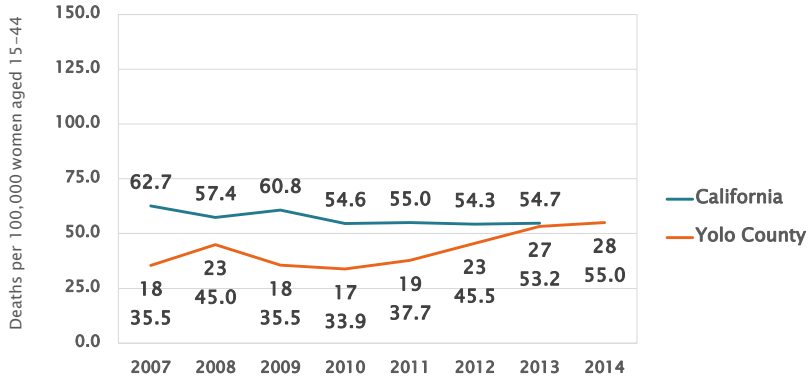
MCAH Advisory Board Meeting
February 17, 2016

Haydee Dabritz, PhD
Epidemiologist
Community Health Branch
Yolo County HHSA

Maternal Mortality in the Childbearing Years

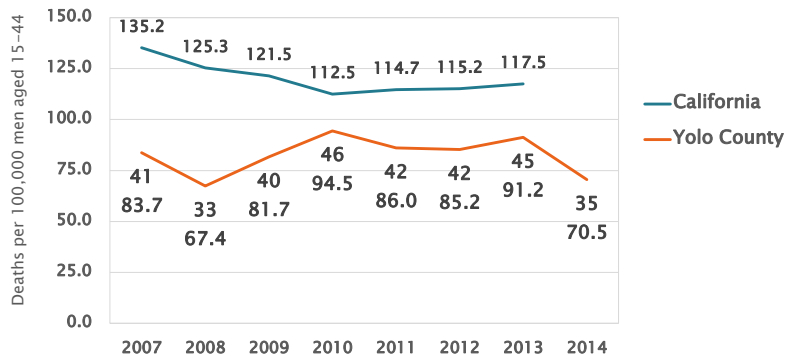
- » » □ Mortality for women aged 15-44
- Mortality for men aged 15-44
- Top causes of death – women
- Female mortality rates by census tract/ZIP code

Mortality Rates for Women aged 15 to 44, Yolo County vs. California, 2007-2014



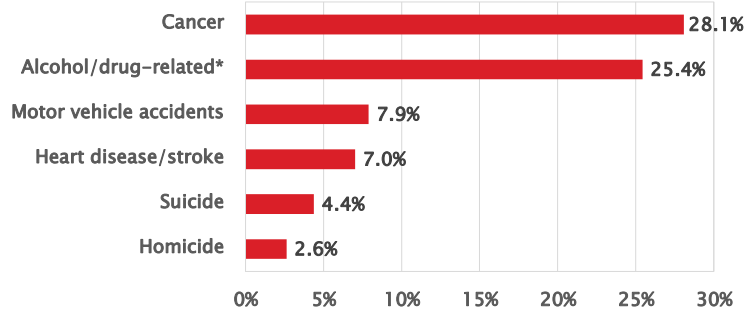
Source: CDPH Vital Records Business Information System (VRBIS), Yolo County resident deaths

Mortality Rates for Men aged 15 to 44, Yolo County vs. California, 2007-2014



Source: CDPH Vital Records Business Information System (VRBIS), Yolo County resident deaths

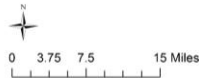
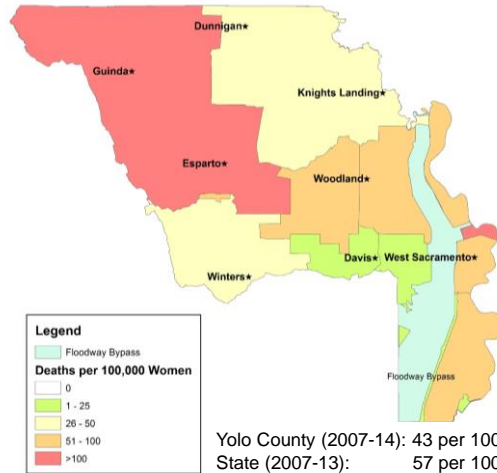
Top Causes of Death for Women aged 15 to 44, Yolo County, 2010-2014



*Includes mental health related to alcohol, alcohol-related liver disease, and accidental overdose (drugs/alcohol/biologicals)

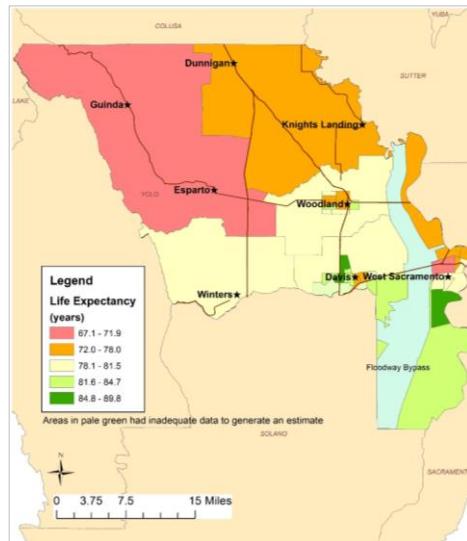
Source: CDPH Vital Records Business Information System (VRBIS), Yolo County resident deaths

Mortality Rates by ZIP/Census Subdivision, Women aged 15 to 44, 2007-2014



Source: CDPH Vital Records Business Information System (VRBIS), Yolo County resident deaths

Life Expectancy by Census Tract, Yolo County, 2012-2014

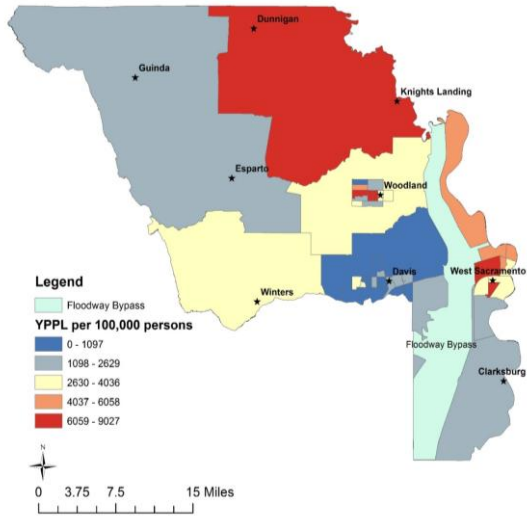


Source: CDPH Vital Records Business Information System (VRBIS), Yolo County resident deaths

Years of Potential Life Lost (YPLL)

- » □ A measure of early death
- Calculated by deducting the age at death from 75 years
- Example: A person dying at age 30 has a YPLL value of 45, i.e., 75 minus 30

YPLL by Census Tract, 2014 Deaths



Source: CDPH Vital Records Business Information System (VRBIS), Yolo County resident deaths

