

## Public Review Draft



### MUNICIPAL SERVICES REVIEW AND SPHERE OF INFLUENCE STUDY

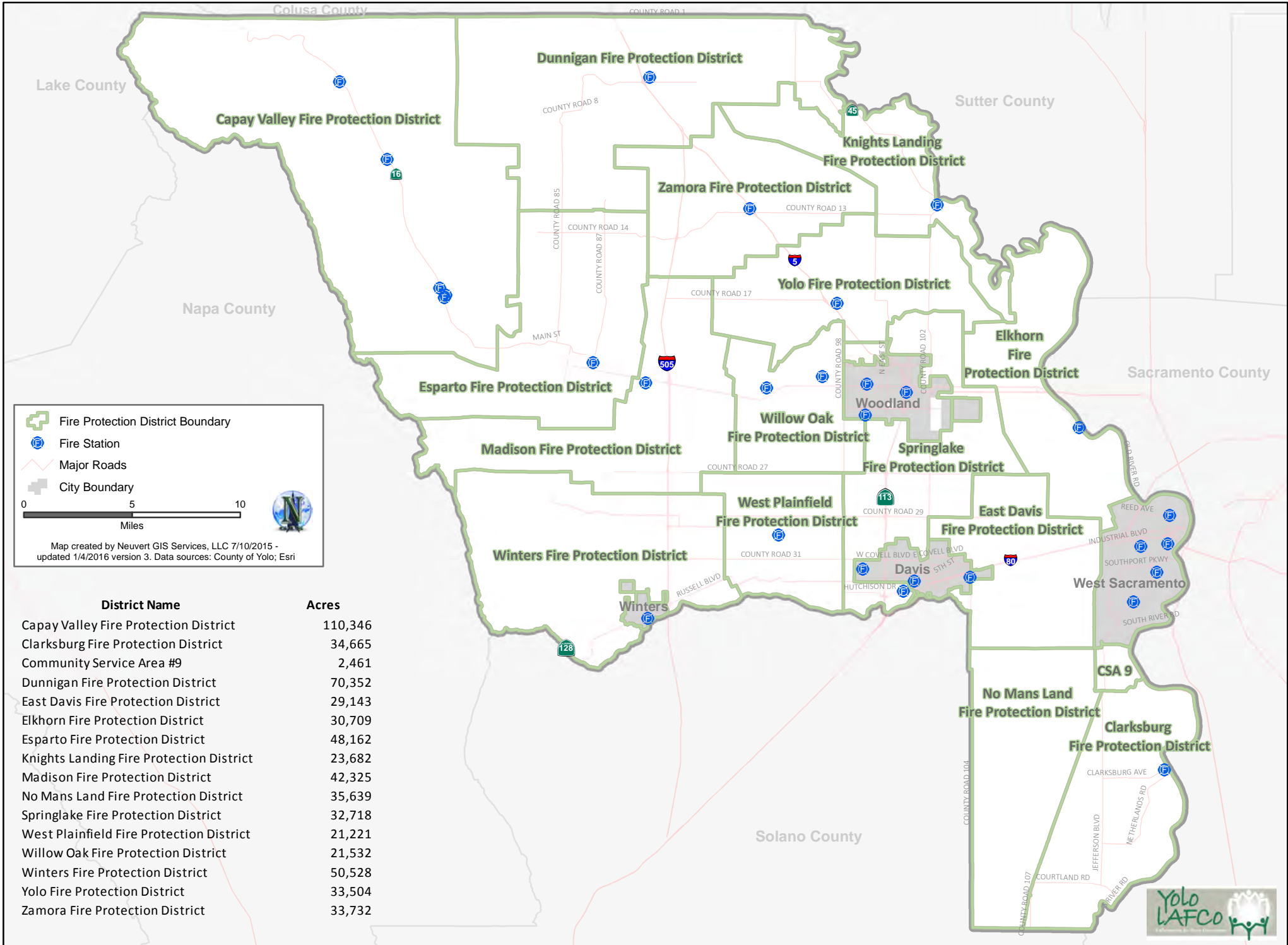
## YOLO LOCAL AGENCY FORMATION COMMISSION





*VOLUME 2 OF 2 – MAP ATLAS*

*March 15, 2016*



# Yolo County Fire Protection Districts



 Fire Protection District Boundary  
 Fire Station  
 Major Roads  
 City Boundary

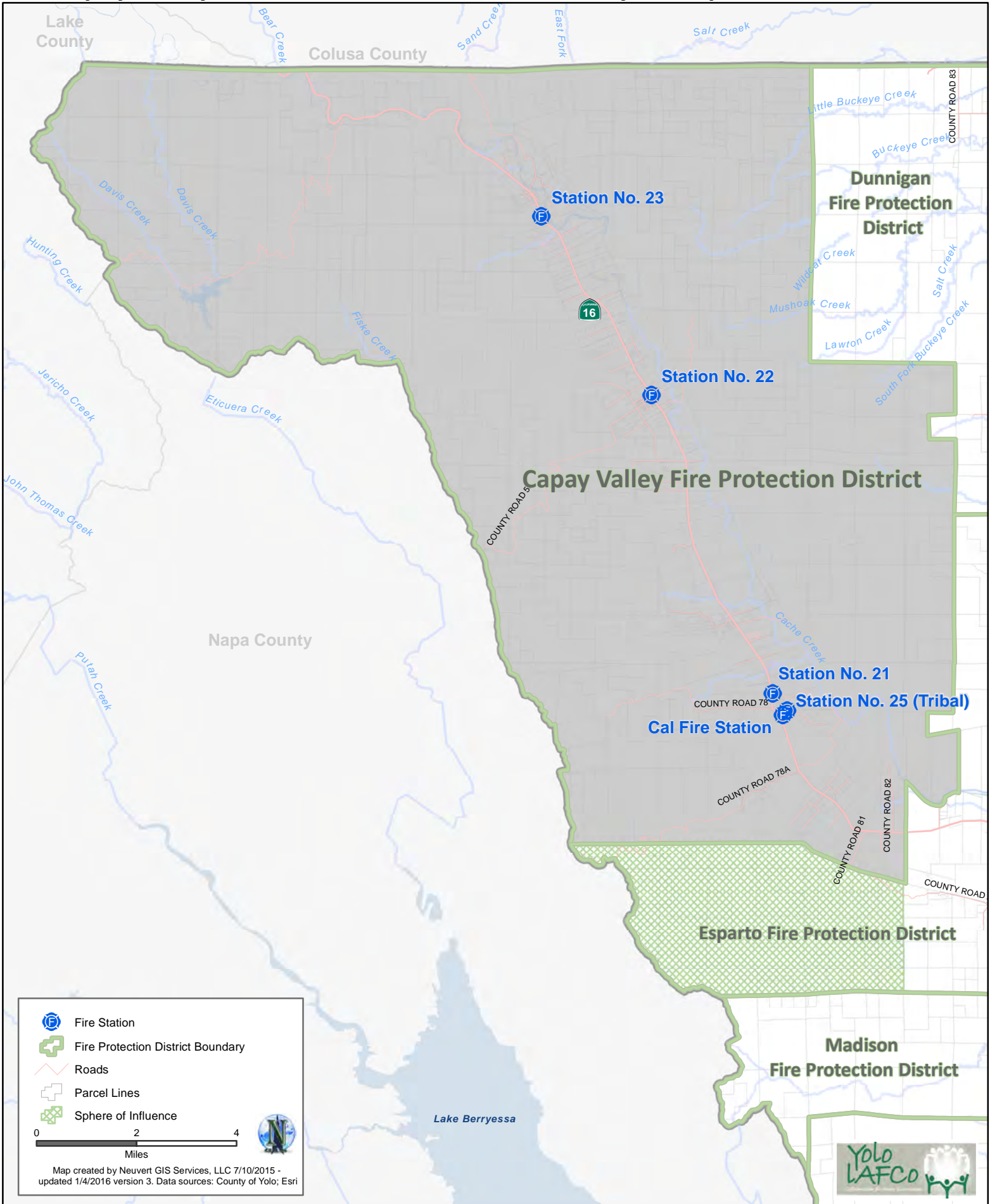
0 5 10  
 Miles

Map created by Neuvort GIS Services, LLC 7/10/2015 - updated 1/4/2016 version 3. Data sources: County of Yolo; Esri

District Name	Acres
Capay Valley Fire Protection District	110,346
Clarksburg Fire Protection District	34,665
Community Service Area #9	2,461
Dunnigan Fire Protection District	70,352
East Davis Fire Protection District	29,143
Elkhorn Fire Protection District	30,709
Esparto Fire Protection District	48,162
Knights Landing Fire Protection District	23,682
Madison Fire Protection District	42,325
No Mans Land Fire Protection District	35,639
Springlake Fire Protection District	32,718
West Plainfield Fire Protection District	21,221
Willow Oak Fire Protection District	21,532
Winters Fire Protection District	50,528
Yolo Fire Protection District	33,504
Zamora Fire Protection District	33,732

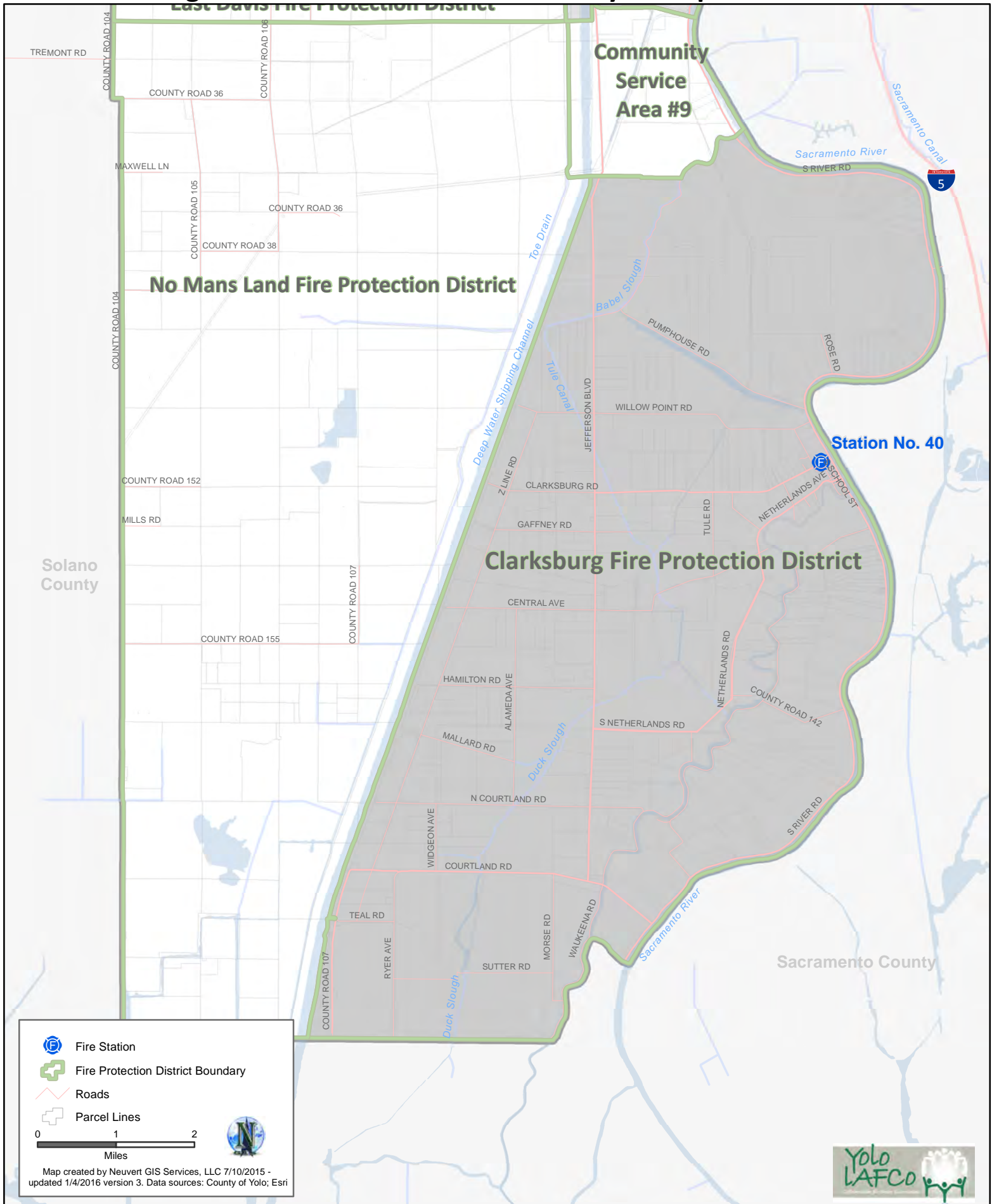


# Capay Valley Fire Protection District Boundary and Sphere of Influence



Adopted by Yolo LAFCO

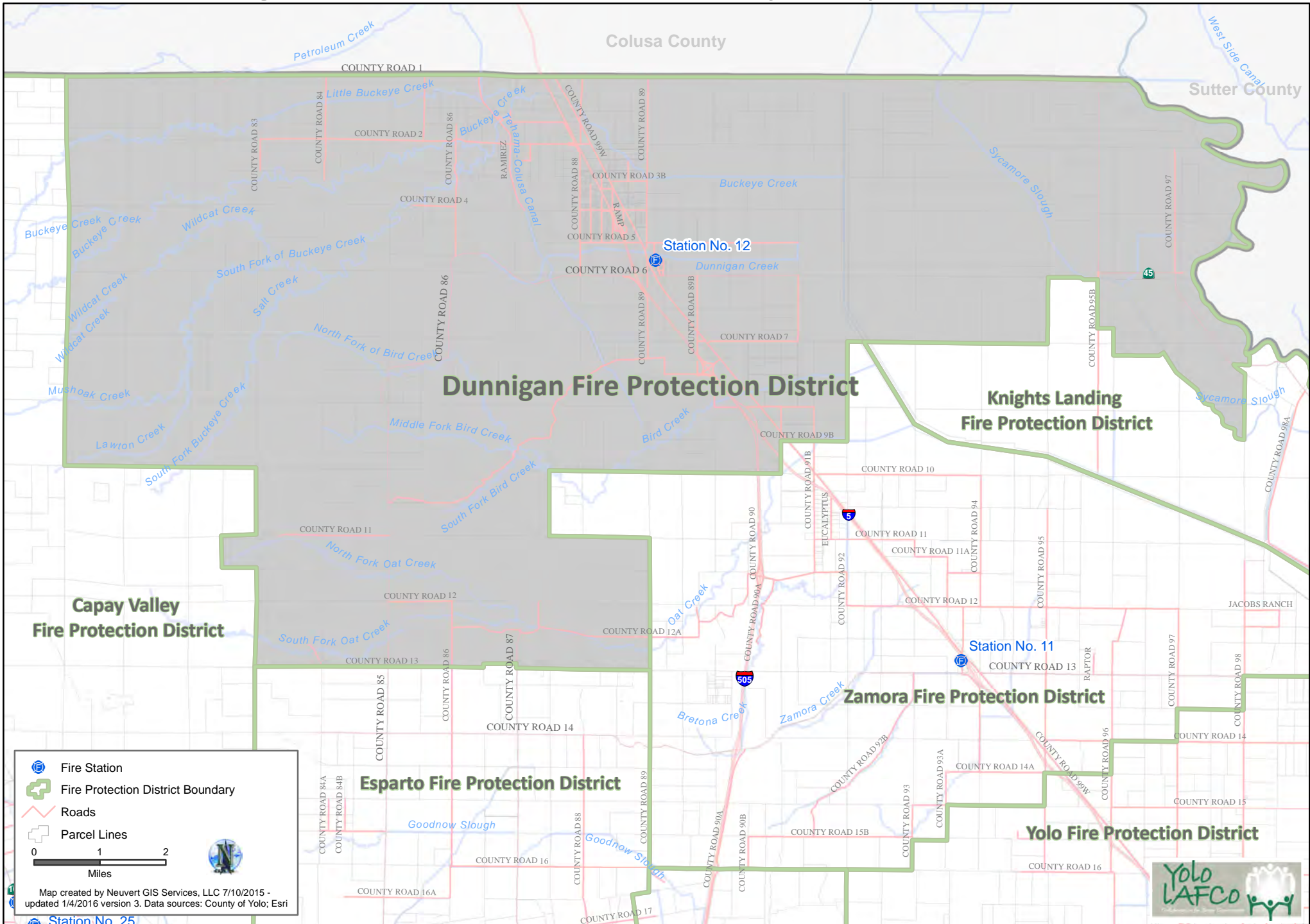
# Clarksburg Fire Protection District Boundary and Sphere of Influence\*



\* Note: Sphere of Influence is coterminous with boundary

Adopted by Yolo LAFCo

# Dunnigan Fire Protection District Boundary and Sphere of Influence\*

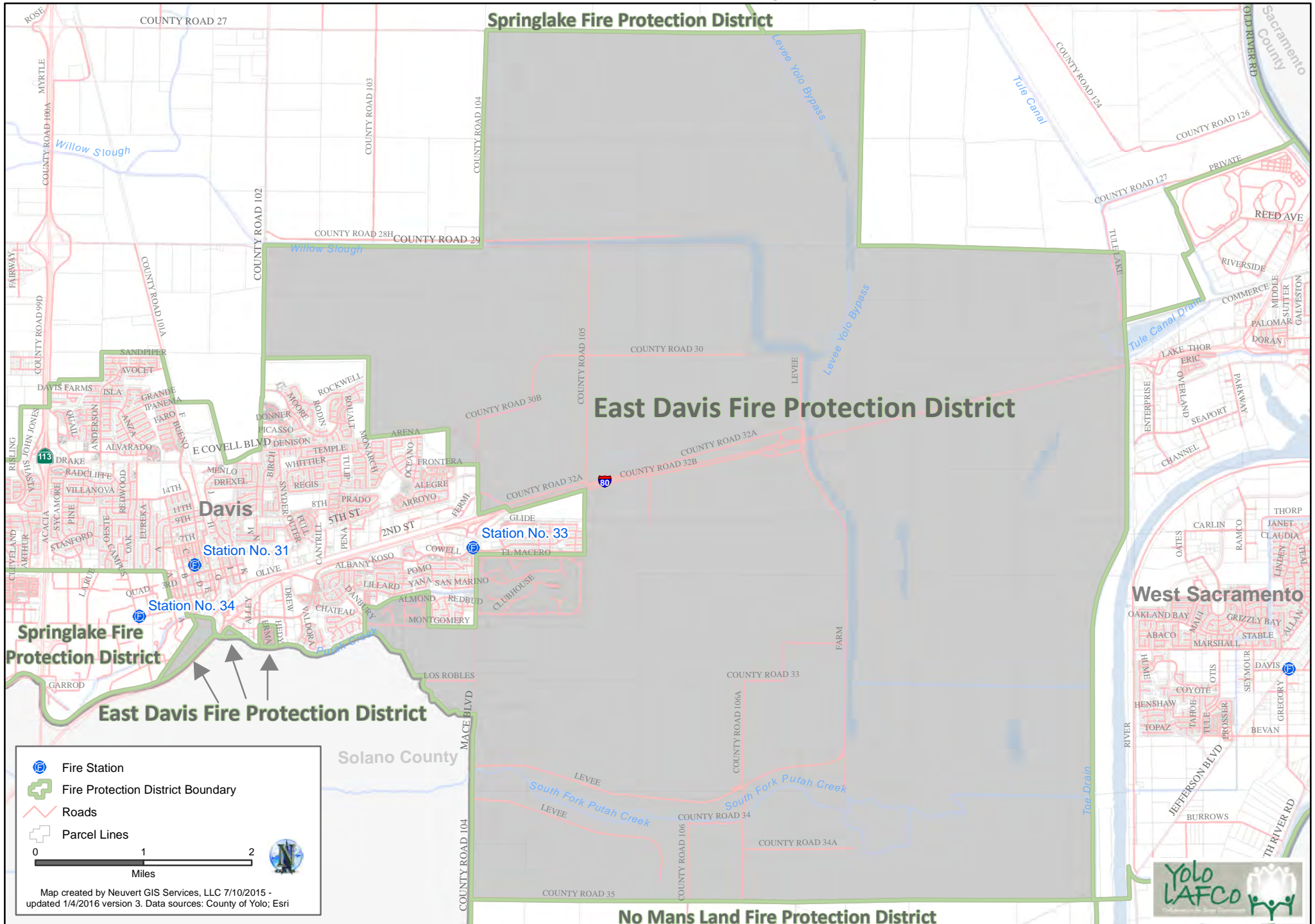


\* Note: Sphere of Influence is coterminous with boundary

Adopted by Yolo LAFCo



# East Davis Fire Protection District Boundary and Sphere of Influence\*



- Fire Station
- Fire Protection District Boundary
- Roads
- Parcel Lines

0 1 2  
Miles

Map created by Neuvirt GIS Services, LLC 7/10/2015 - updated 1/4/2016 version 3. Data sources: County of Yolo; Esri

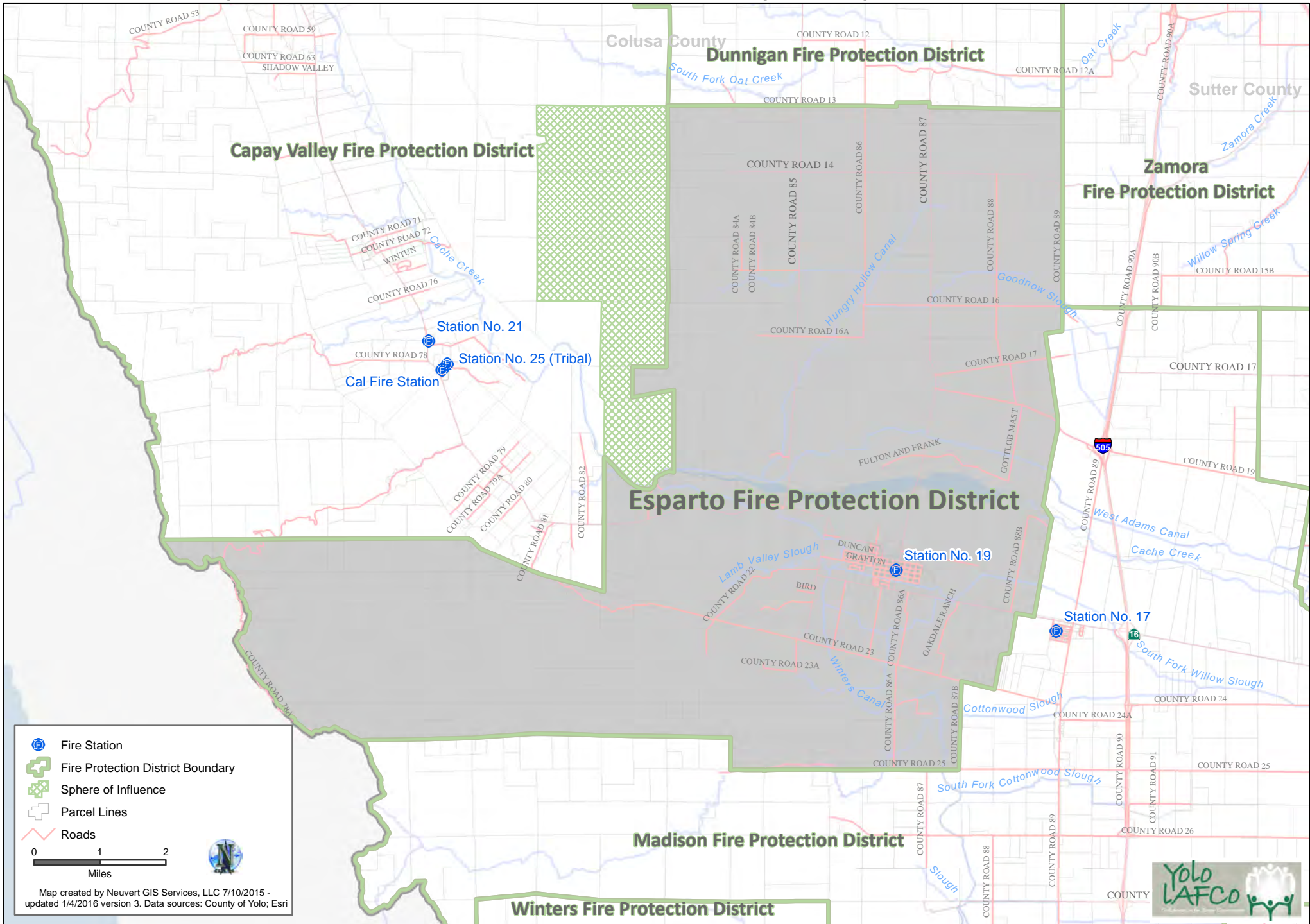


\* Note: Sphere of Influence is coterminous with boundary

Adopted by Yolo LAFCo



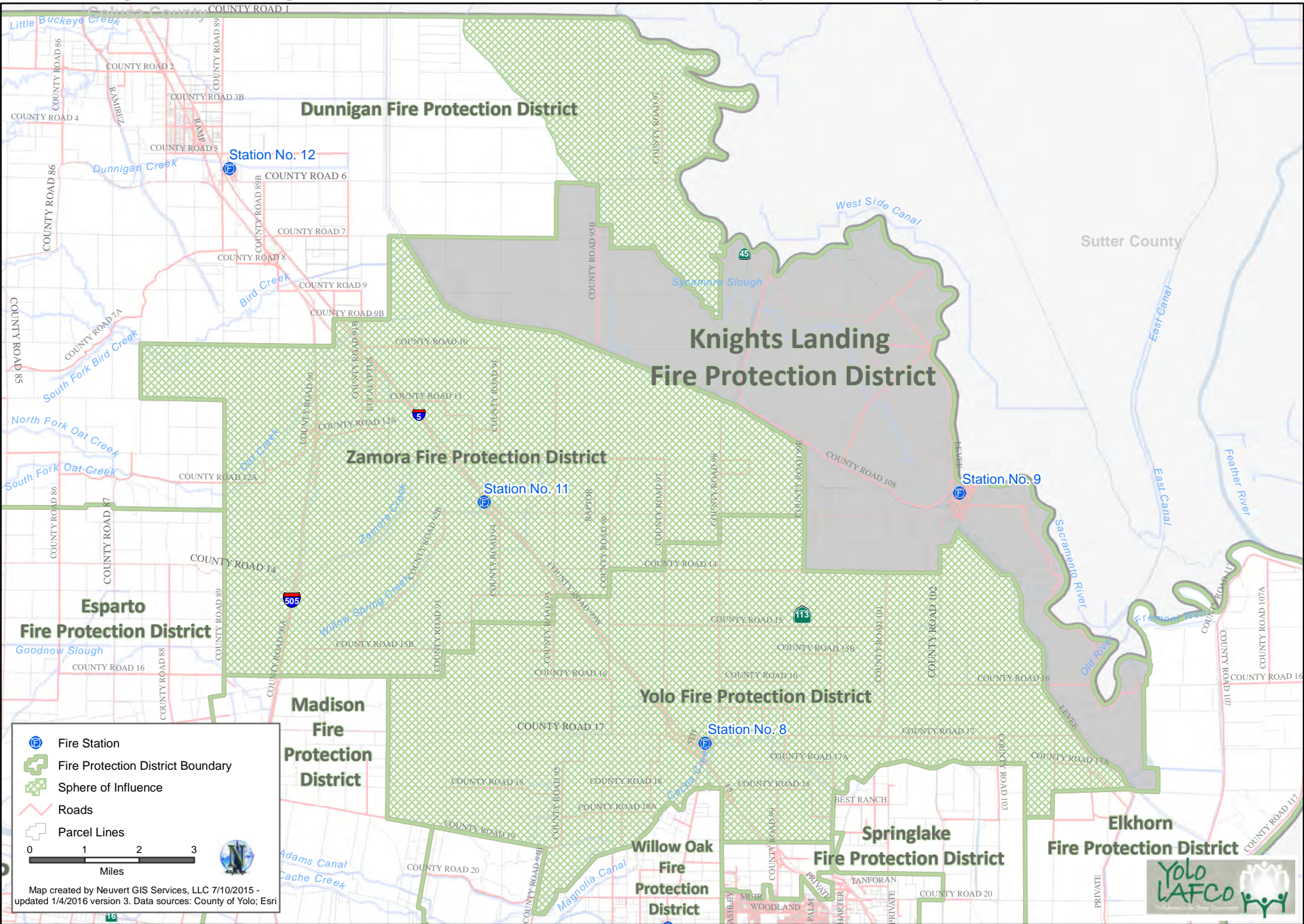
# Esparto Fire Protection District Boundary and Sphere of Influence



Adopted by Yolo LAFCO

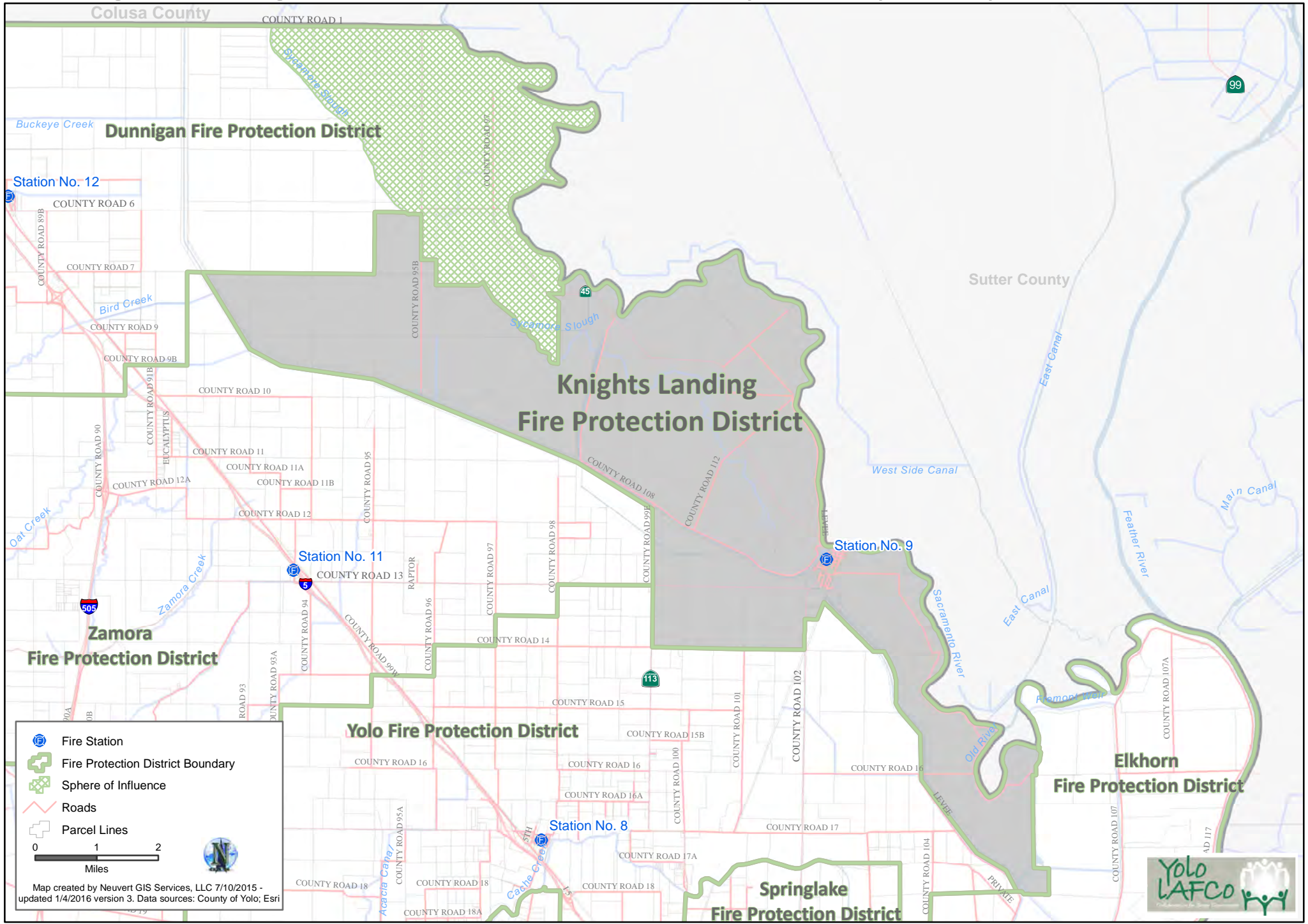


# Knights Landing Fire Protection District Boundary and Existing Sphere of Influence



Adopted by Yolo LAFCo

# Knights Landing Fire Protection District Boundary and Proposed Sphere of Influence



Fire Station  
 Fire Protection District Boundary  
 Sphere of Influence  
 Roads  
 Parcel Lines

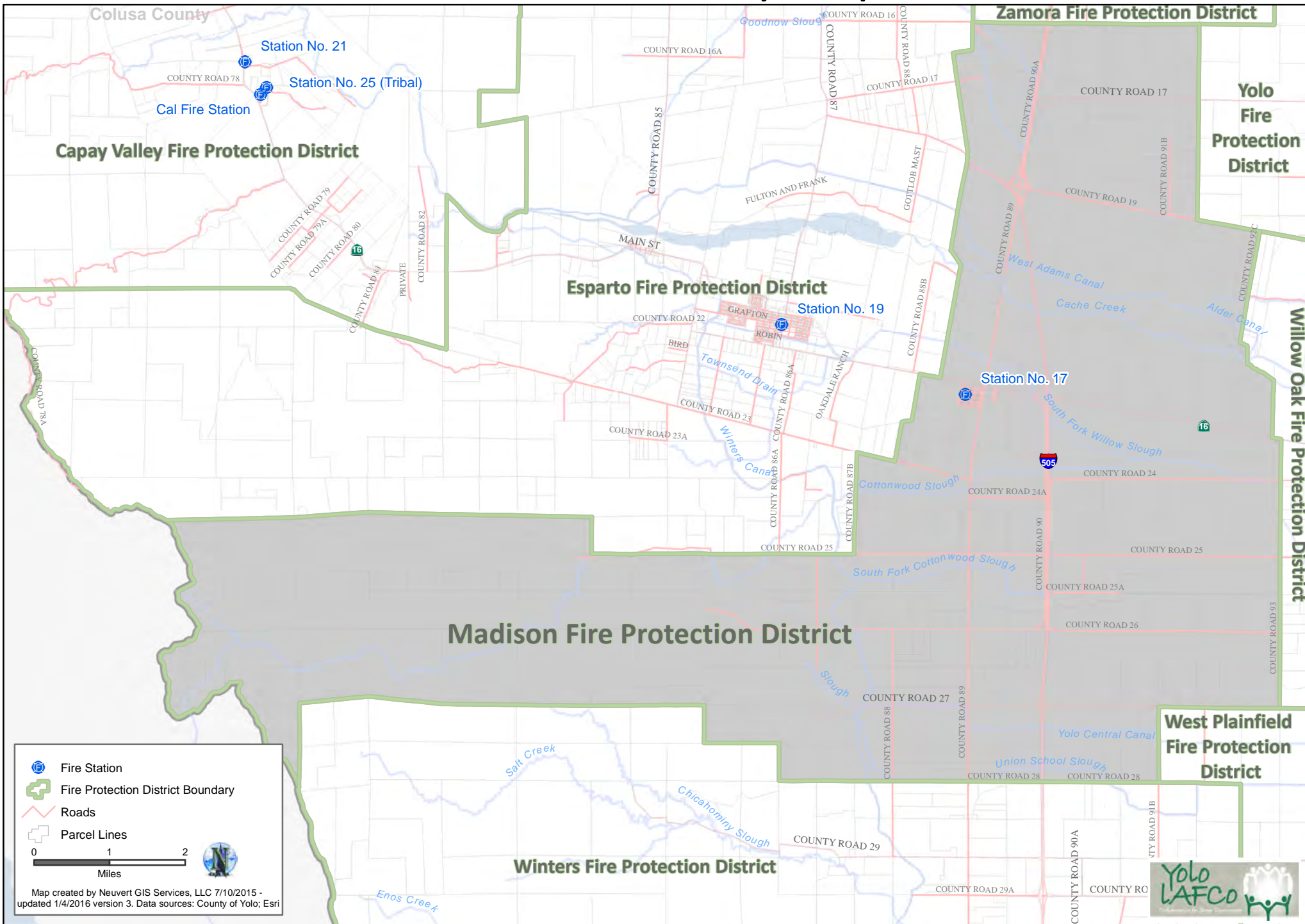
0 1 2  
 Miles

Map created by Neuvirt GIS Services, LLC 7/10/2015 - updated 1/4/2016 version 3. Data sources: County of Yolo; Esri



Adopted by Yolo LAFCo

# Madison Fire Protection District Boundary and Sphere of Influence\*



Fire Station  
 Fire Protection District Boundary  
 Roads  
 Parcel Lines

0 1 2  
 Miles

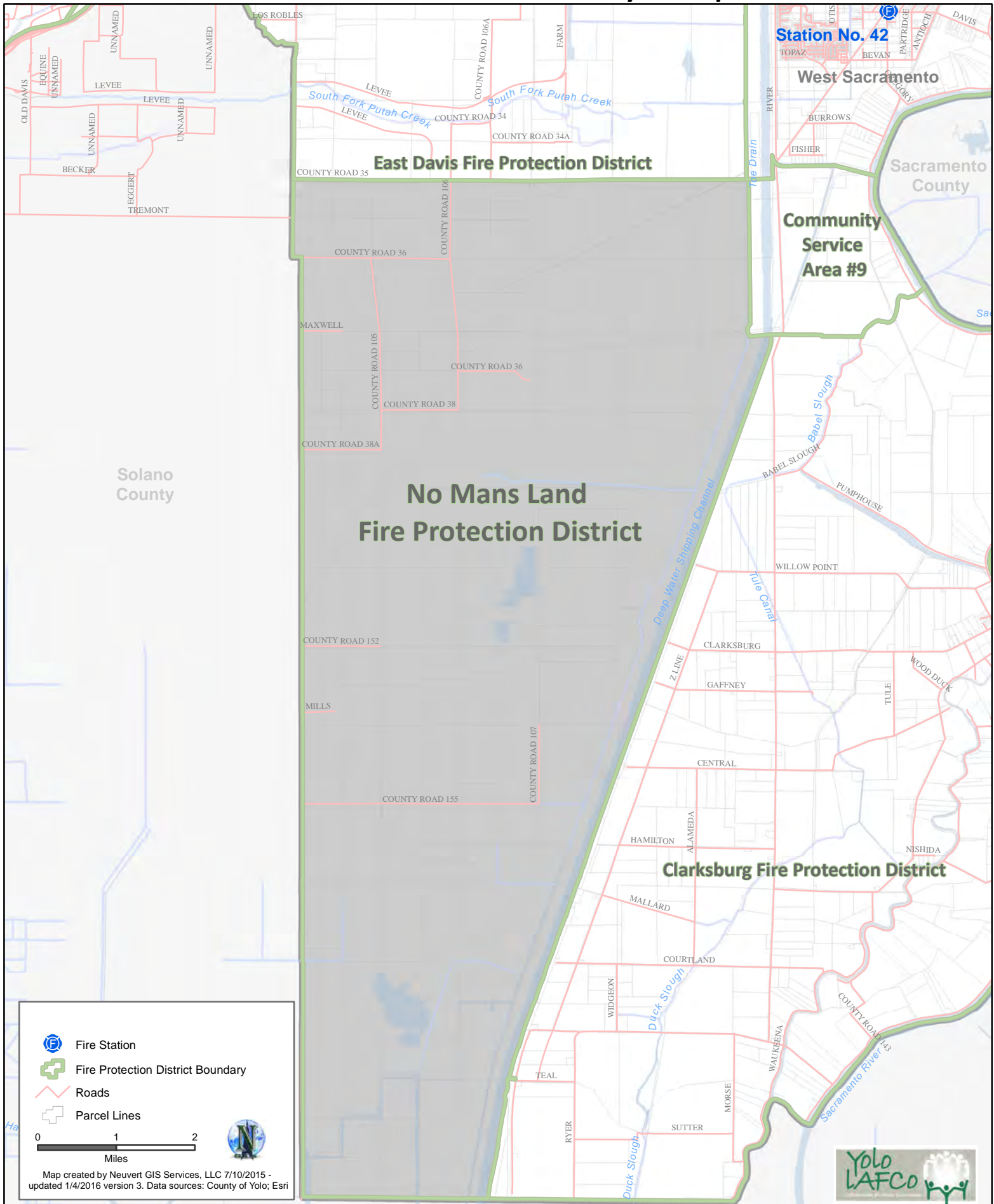
Map created by Neuvert GIS Services, LLC 7/10/2015 - updated 1/4/2016 version 3. Data sources: County of Yolo; Esri



\* Note: Sphere of Influence is coterminous with boundary

Adopted by Yolo LAFCo

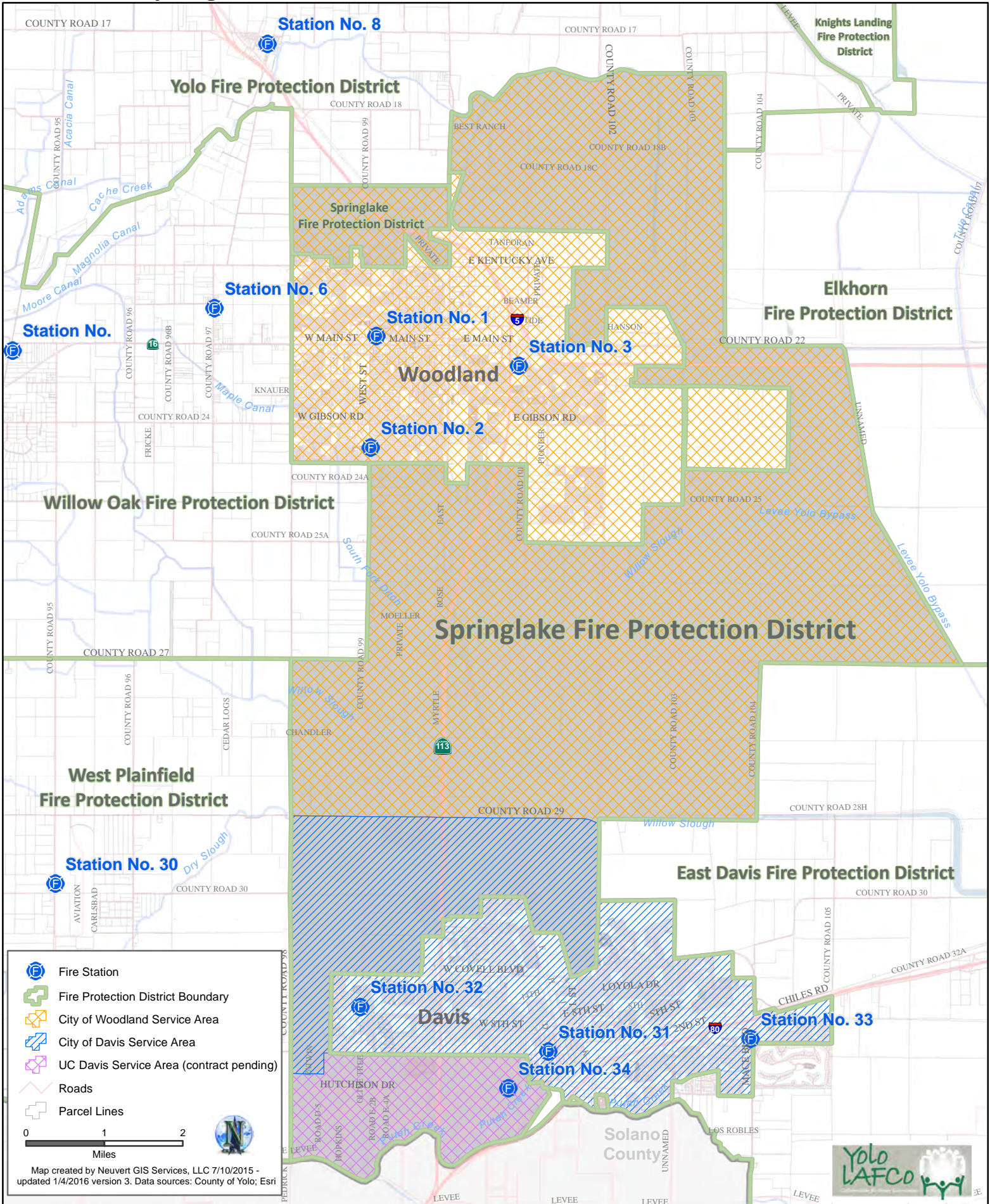
# No Mans Land Fire Protection District Boundary and Sphere of Influence\*



\* Note: Sphere of Influence is coterminous with boundary

Adopted by Yolo LAFCO

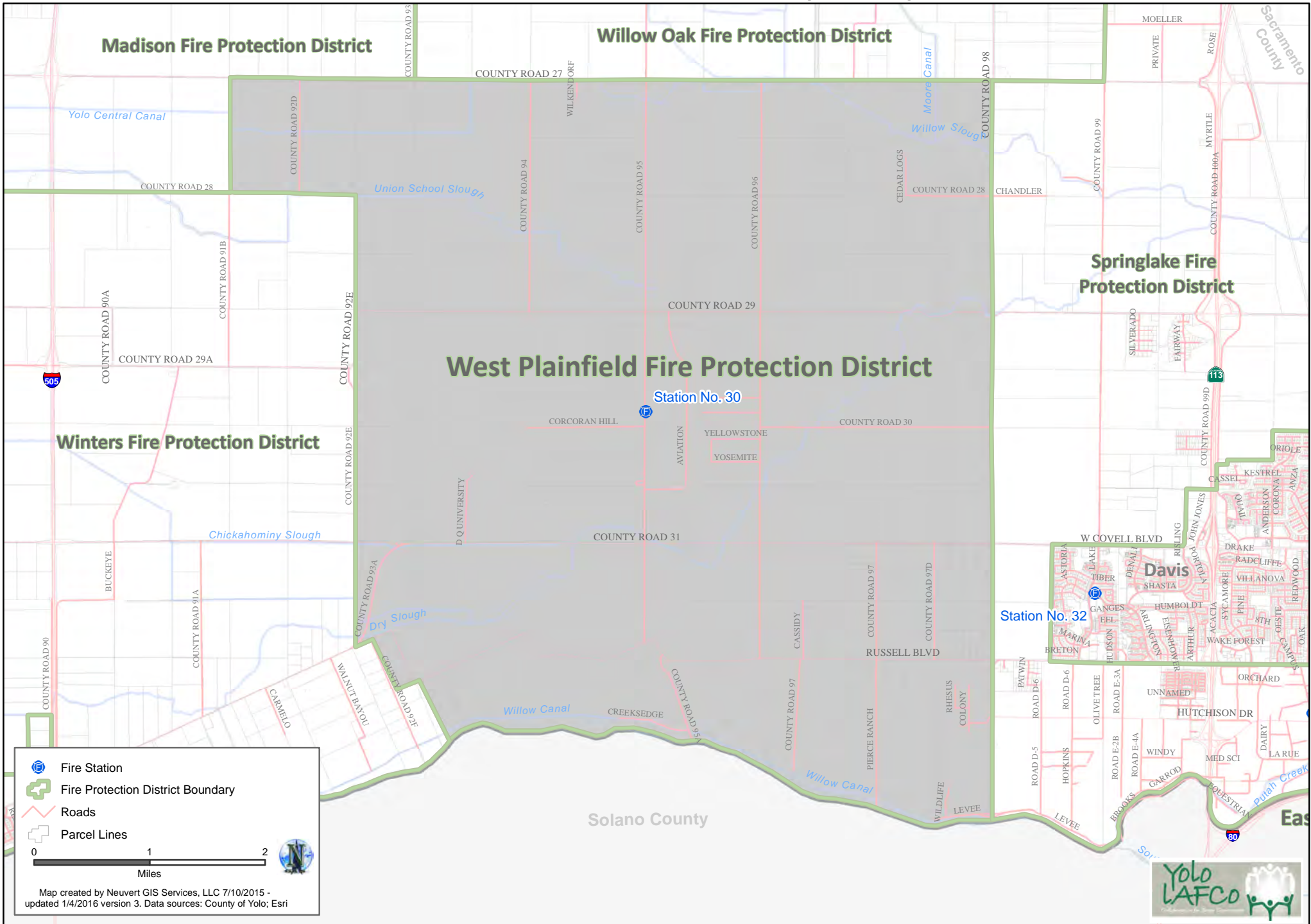
# Springlake Fire Protection District Contract Service Areas



Adopted by Yolo LAFCo

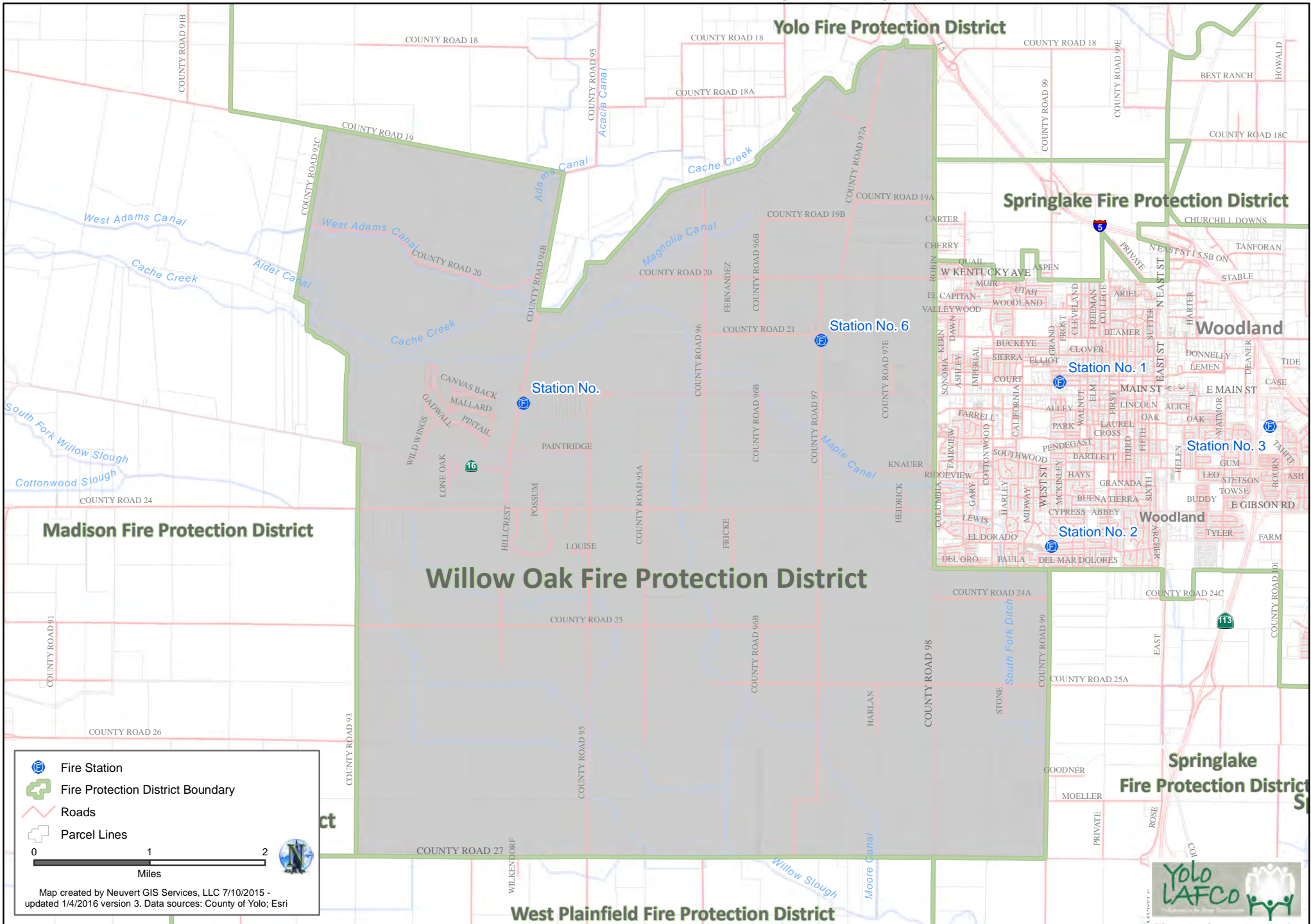


# West Plainfield Fire Protection District Boundary and Sphere of Influence\*



\* Note: Sphere of Influence is coterminous with boundary

# Willow Oak Fire Protection District Boundary and Sphere of Influence\*

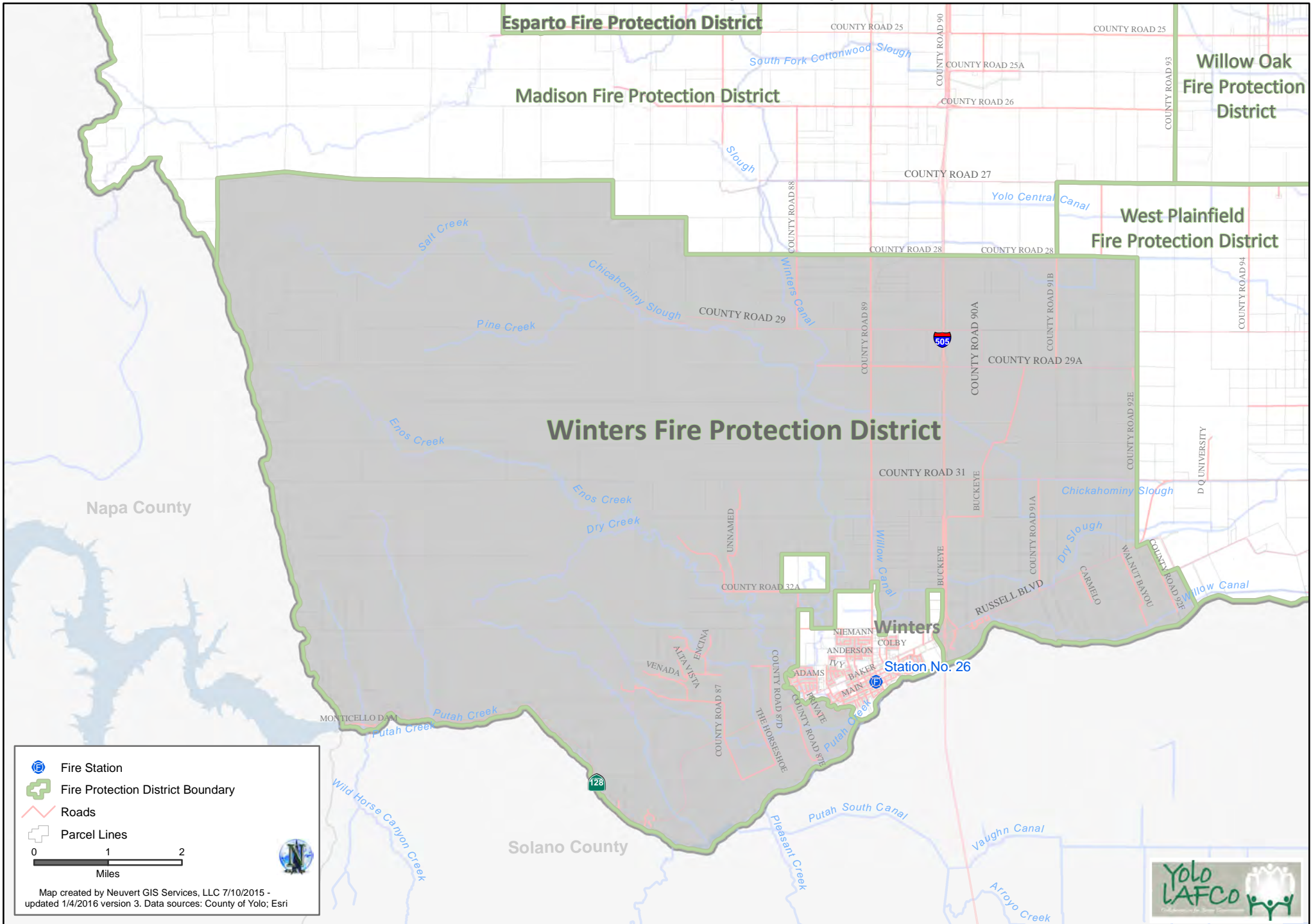


\* Note: Sphere of Influence is coterminous with boundary

Adopted by Yolo LAFCo



# Winters Fire Protection District Boundary and Sphere of Influence\*

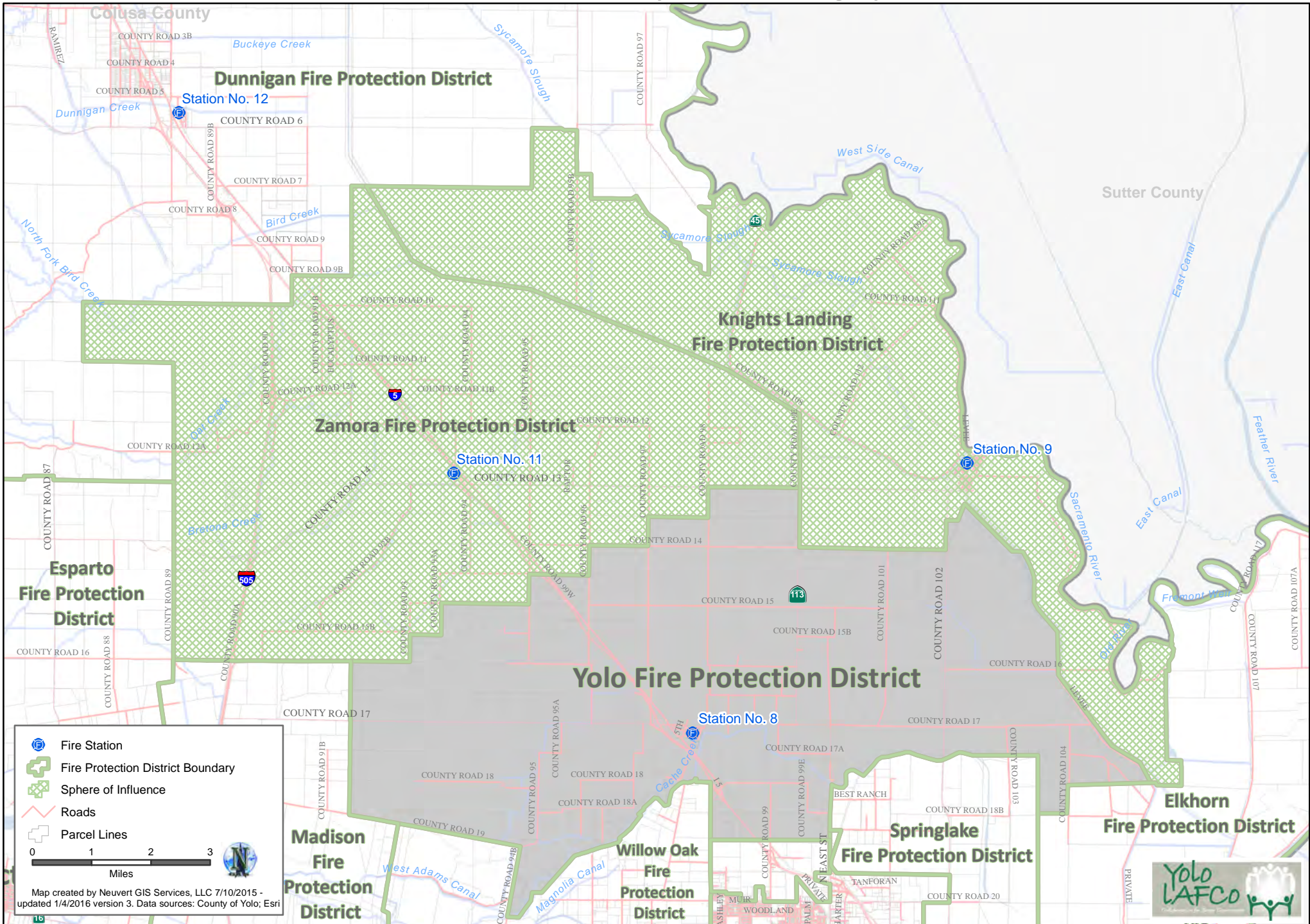


\* Note: Sphere of Influence is coterminous with boundary

Adopted by Yolo LAFCo

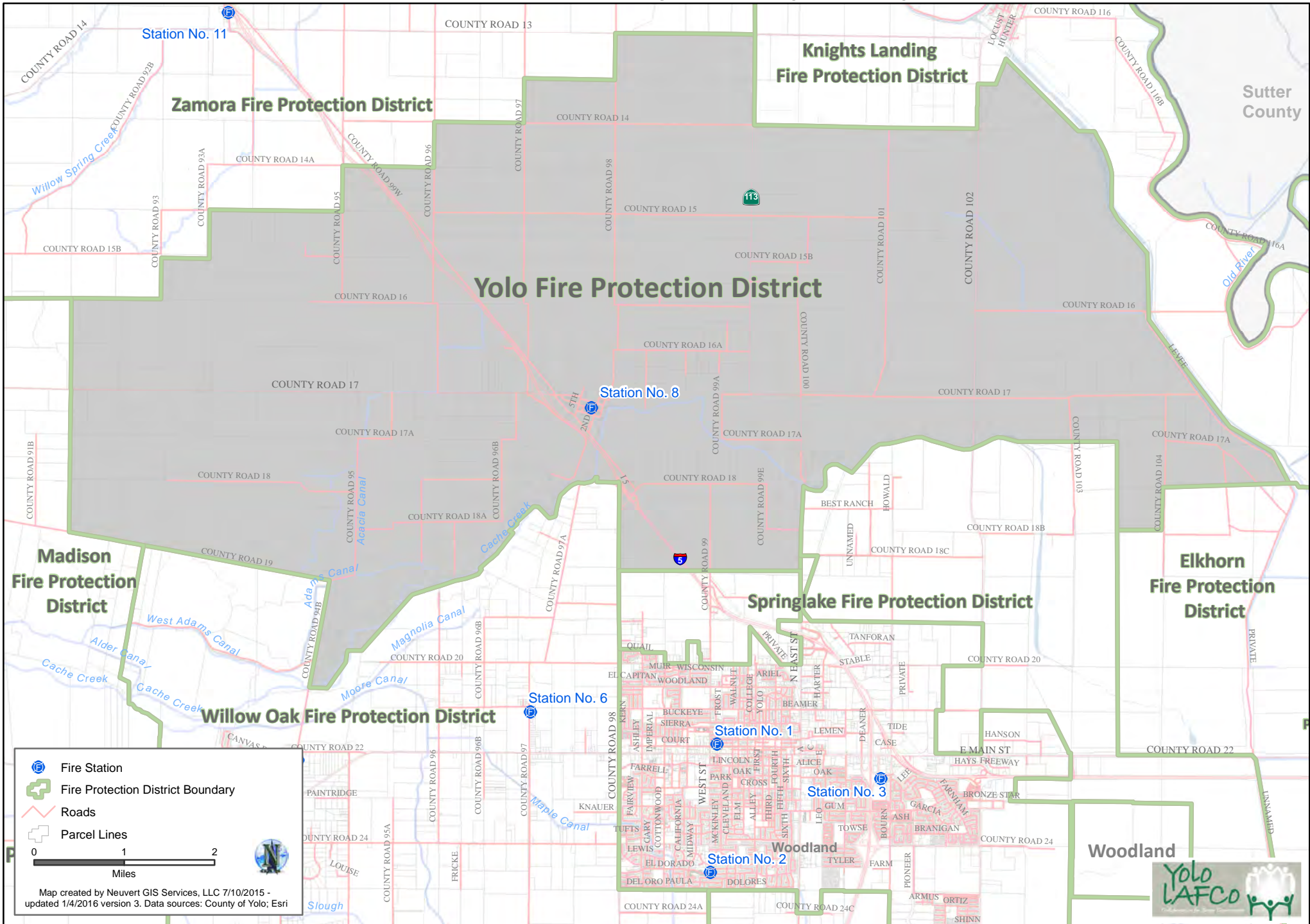


# Yolo Fire Protection District Boundary and Existing Sphere of Influence



Adopted by Yolo LAFCo

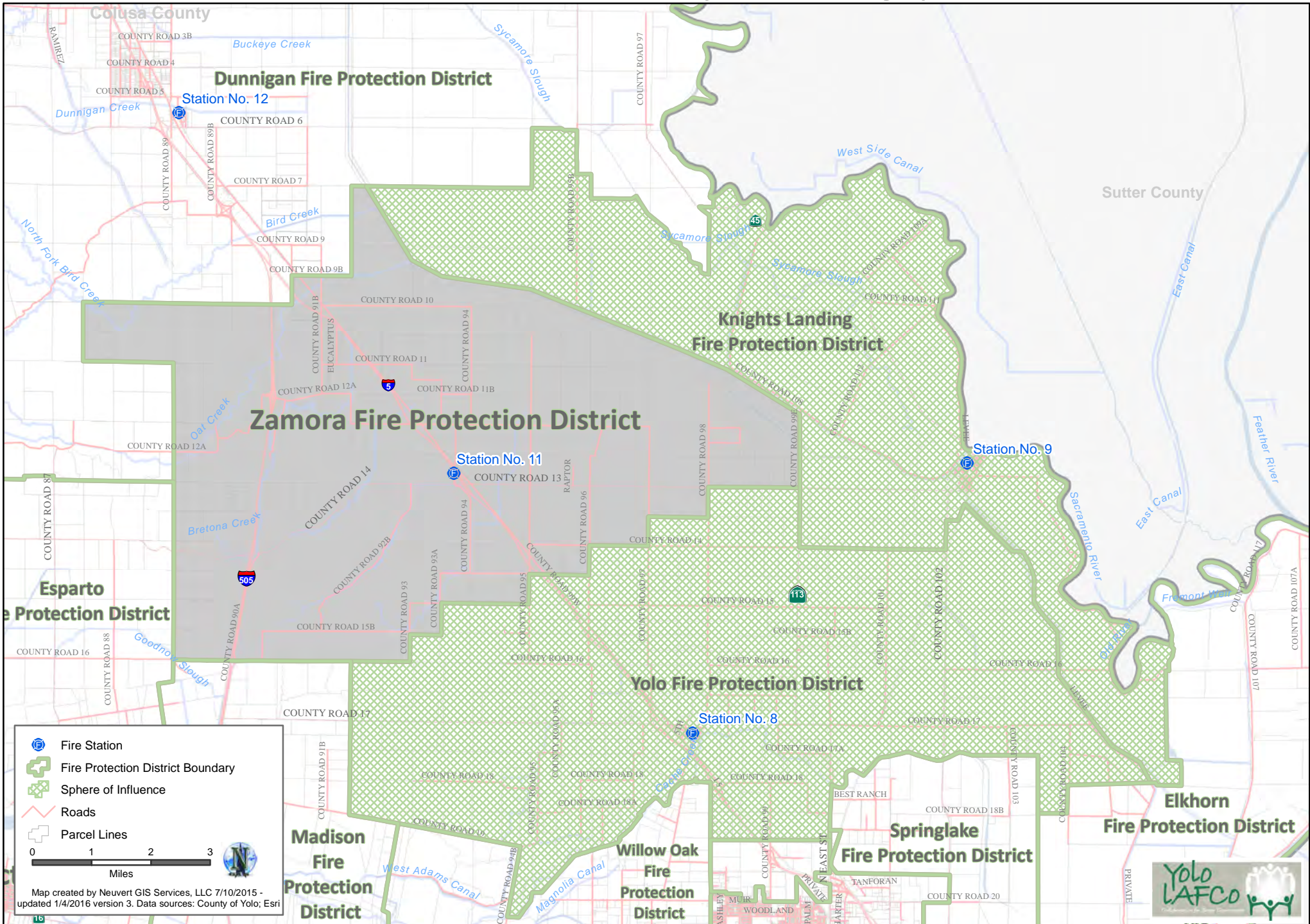
# Yolo Fire Protection District Boundary and Proposed Sphere of Influence\*



\* Note: Sphere of Influence is coterminous with boundary

Adopted by Yolo LAFCo

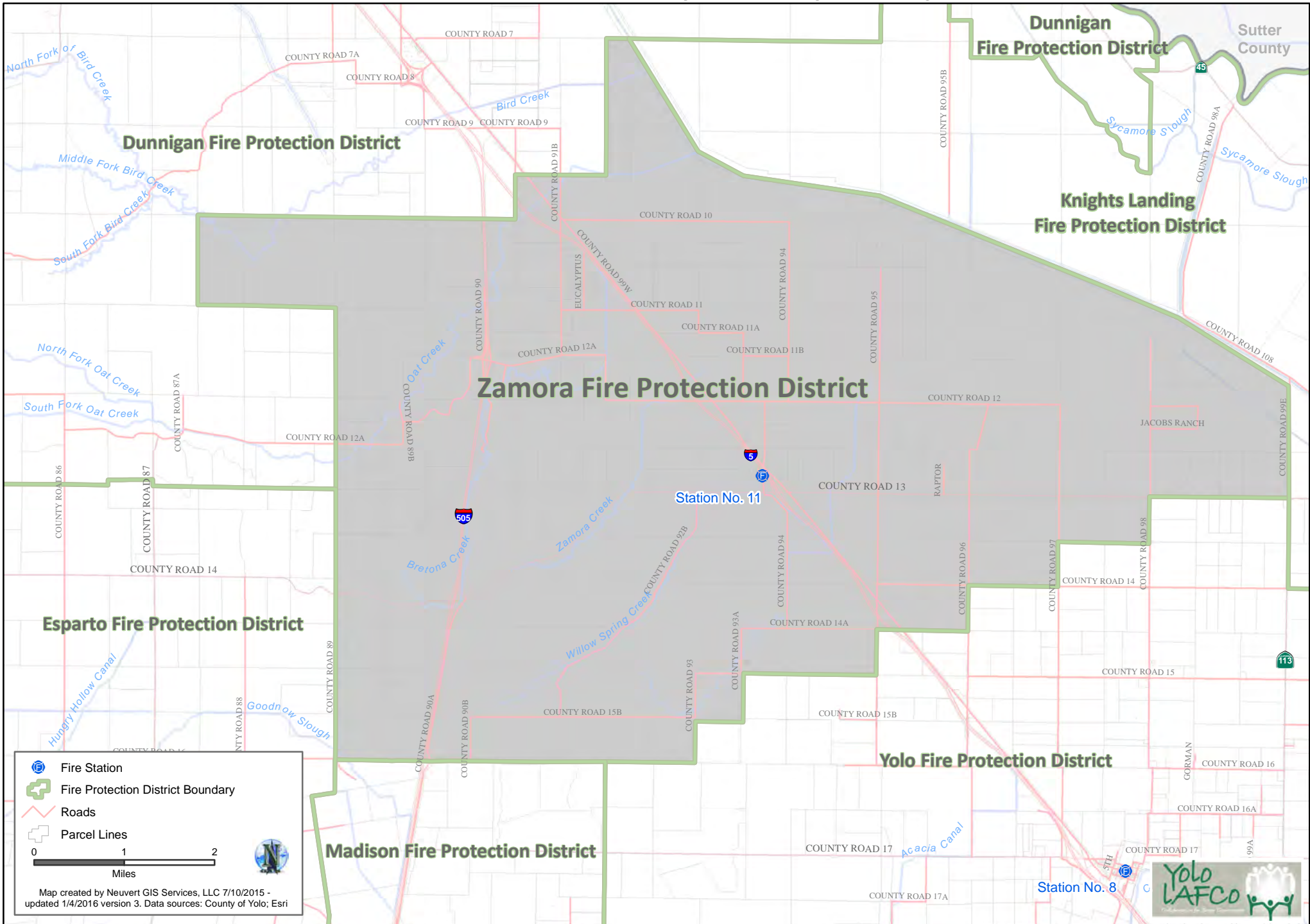
# Zamora Fire Protection District Boundary and Existing Sphere of Influence



Adopted by Yolo LAFCo



# Zamora Fire Protection District Boundary and Proposed Sphere of Influence\*



\* Note: Sphere of Influence is coterminous with boundary

Adopted by Yolo LAFCo

Fire Station  
 Fire Protection District Boundary  
 Roads  
 Parcel Lines

0 1 2  
 Miles

Map created by Neuvort GIS Services, LLC 7/10/2015 -  
 updated 1/4/2016 version 3. Data sources: County of Yolo; Esri

