



MUNICIPAL SERVICES REVIEW AND SPHERE OF INFLUENCE STUDY FOR THE 15 FIRE PROTECTION DISTRICTS

YOLO LOCAL AGENCY FORMATION COMMISSION

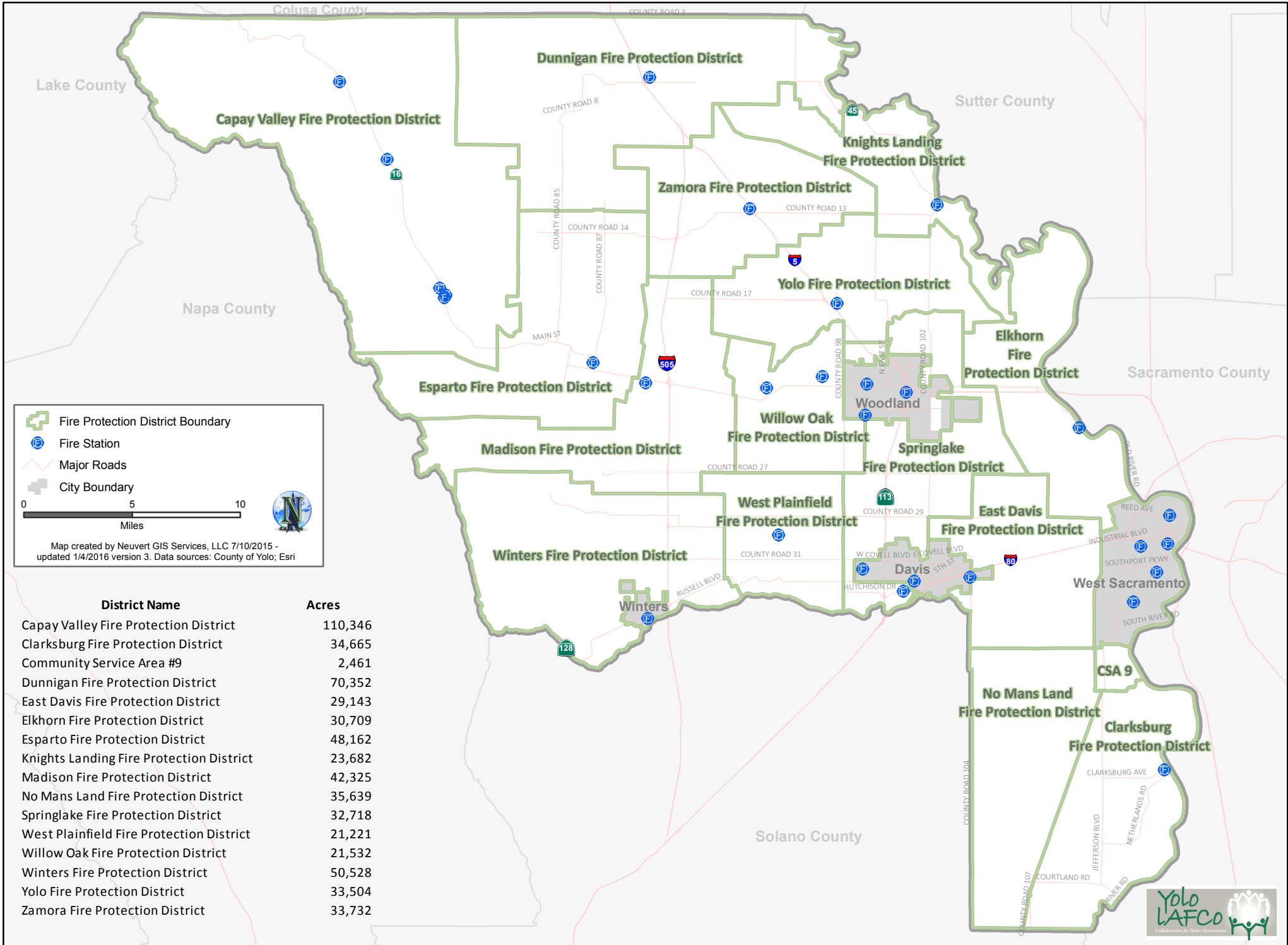
VOLUME 2 OF 2 – MAP ATLAS

Adopted on June 23, 2016



■ 2250 East Bidwell St., Ste #100 ■ Folsom, CA 95630
(916) 458-5100 ■ Fax: (916) 983-2090

Yolo County Fire Protection Districts



Fire Protection District Boundary
 Fire Station
 Major Roads
 City Boundary

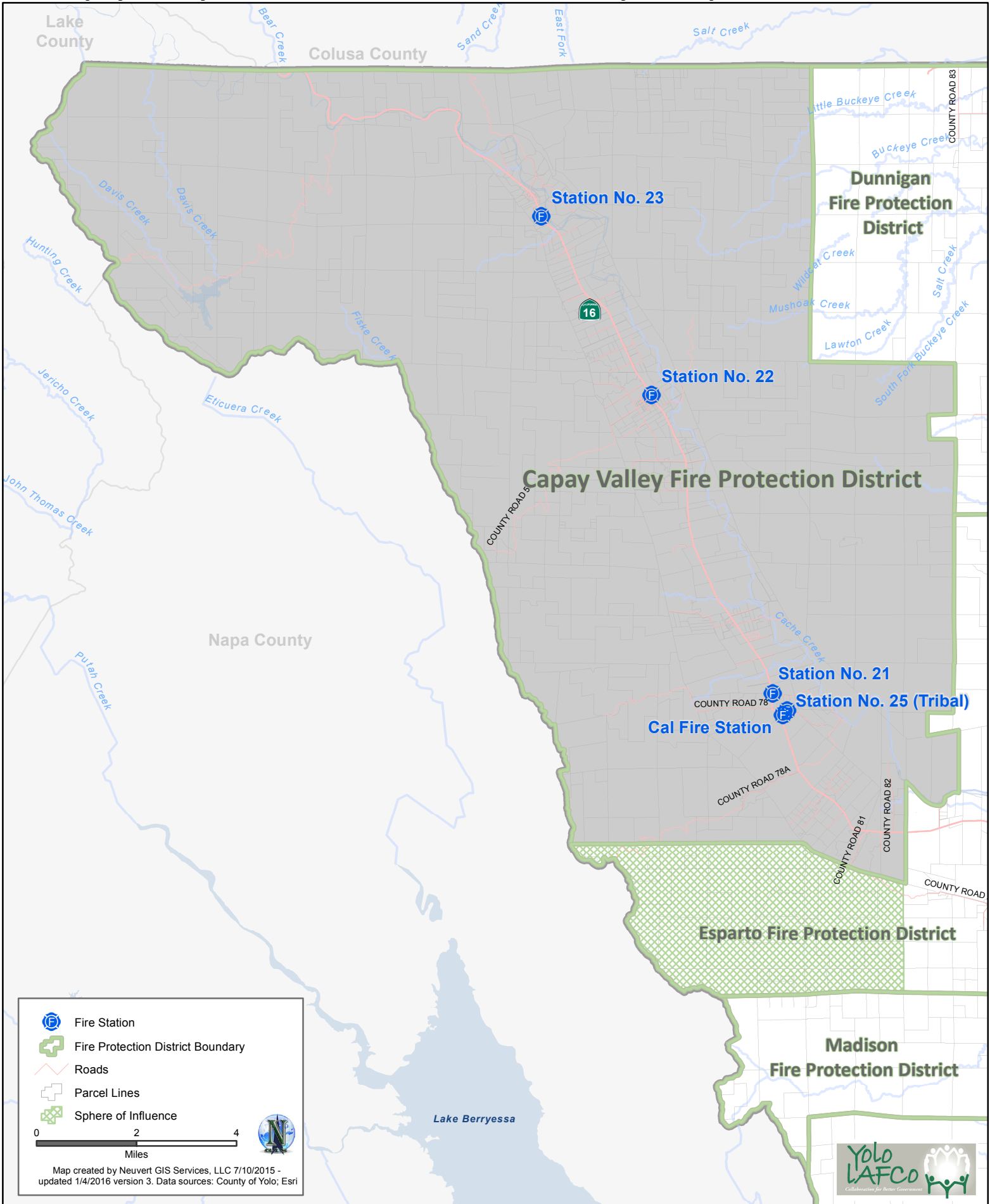
0 5 10
 Miles

Map created by Neuvort GIS Services, LLC 7/10/2015 - updated 1/4/2016 version 3. Data sources: County of Yolo; Esri

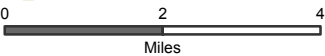
District Name	Acres
Capay Valley Fire Protection District	110,346
Clarksburg Fire Protection District	34,665
Community Service Area #9	2,461
Dunnigan Fire Protection District	70,352
East Davis Fire Protection District	29,143
Elkhorn Fire Protection District	30,709
Esparto Fire Protection District	48,162
Knights Landing Fire Protection District	23,682
Madison Fire Protection District	42,325
No Mans Land Fire Protection District	35,639
Springlake Fire Protection District	32,718
West Plainfield Fire Protection District	21,221
Willow Oak Fire Protection District	21,532
Winters Fire Protection District	50,528
Yolo Fire Protection District	33,504
Zamora Fire Protection District	33,732



Capay Valley Fire Protection District Boundary and Sphere of Influence



- Fire Station
- Fire Protection District Boundary
- Roads
- Parcel Lines
- Sphere of Influence

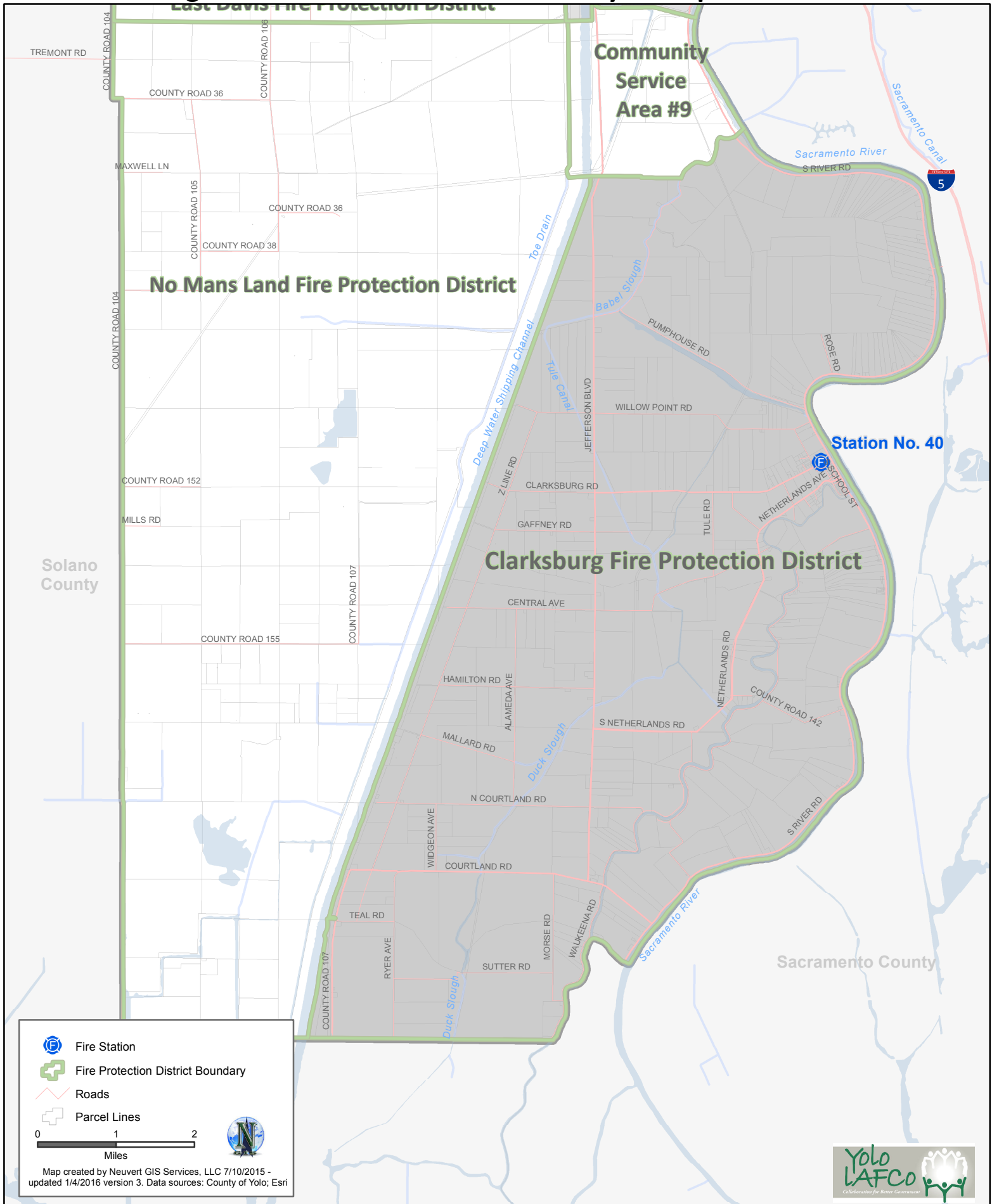


Map created by Neuvort GIS Services, LLC 7/10/2015 - updated 1/4/2016 version 3. Data sources: County of Yolo; Esri



Adopted by Yolo LAFCo

Clarksburg Fire Protection District Boundary and Sphere of Influence*

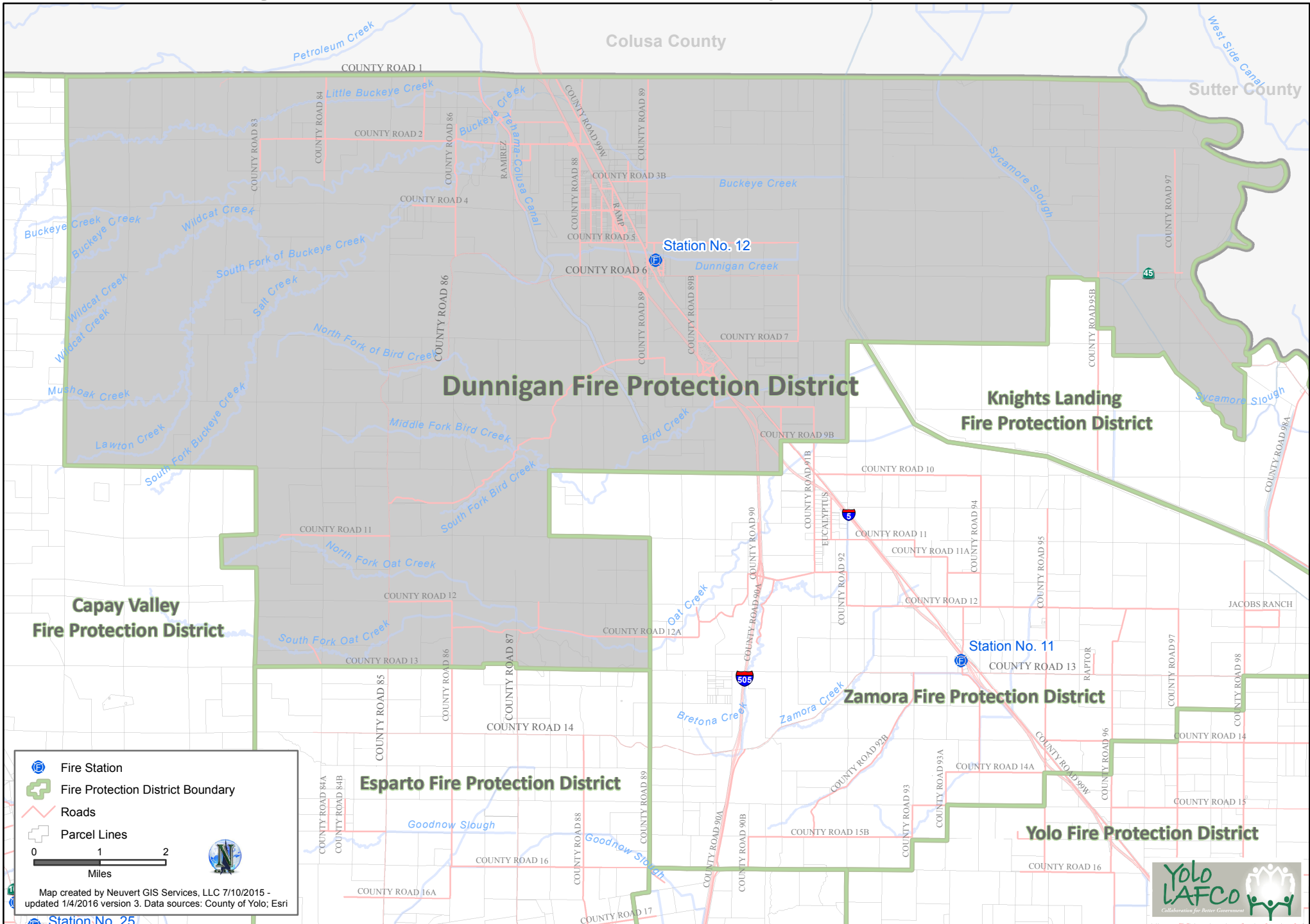


* Note: Sphere of Influence is coterminous with boundary

Adopted by Yolo LAFCo



Dunnigan Fire Protection District Boundary and Sphere of Influence*

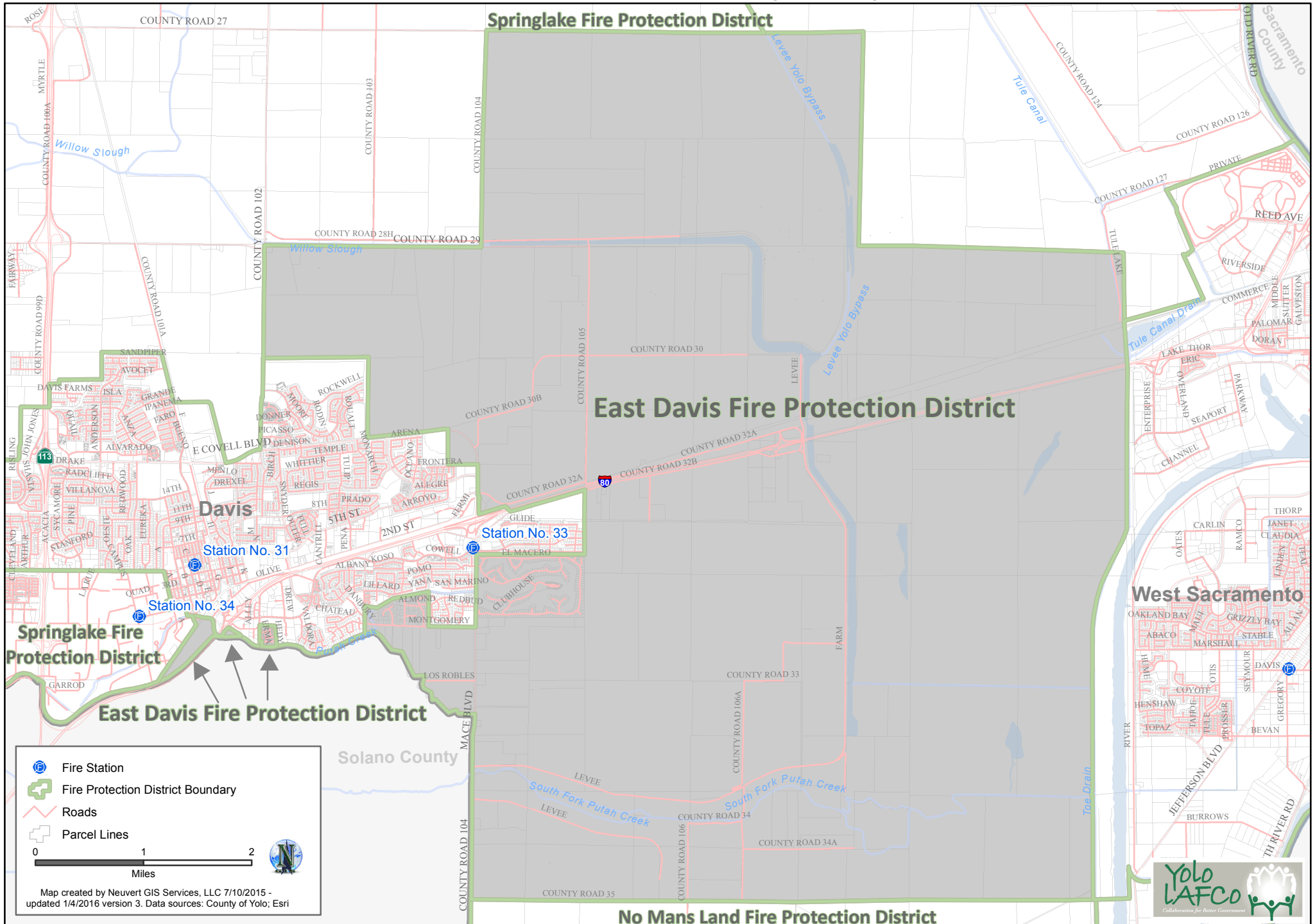


* Note: Sphere of Influence is coterminous with boundary

Adopted by Yolo LAFCo



East Davis Fire Protection District Boundary and Sphere of Influence*



- Fire Station
- Fire Protection District Boundary
- Roads
- Parcel Lines

0 1 2 Miles

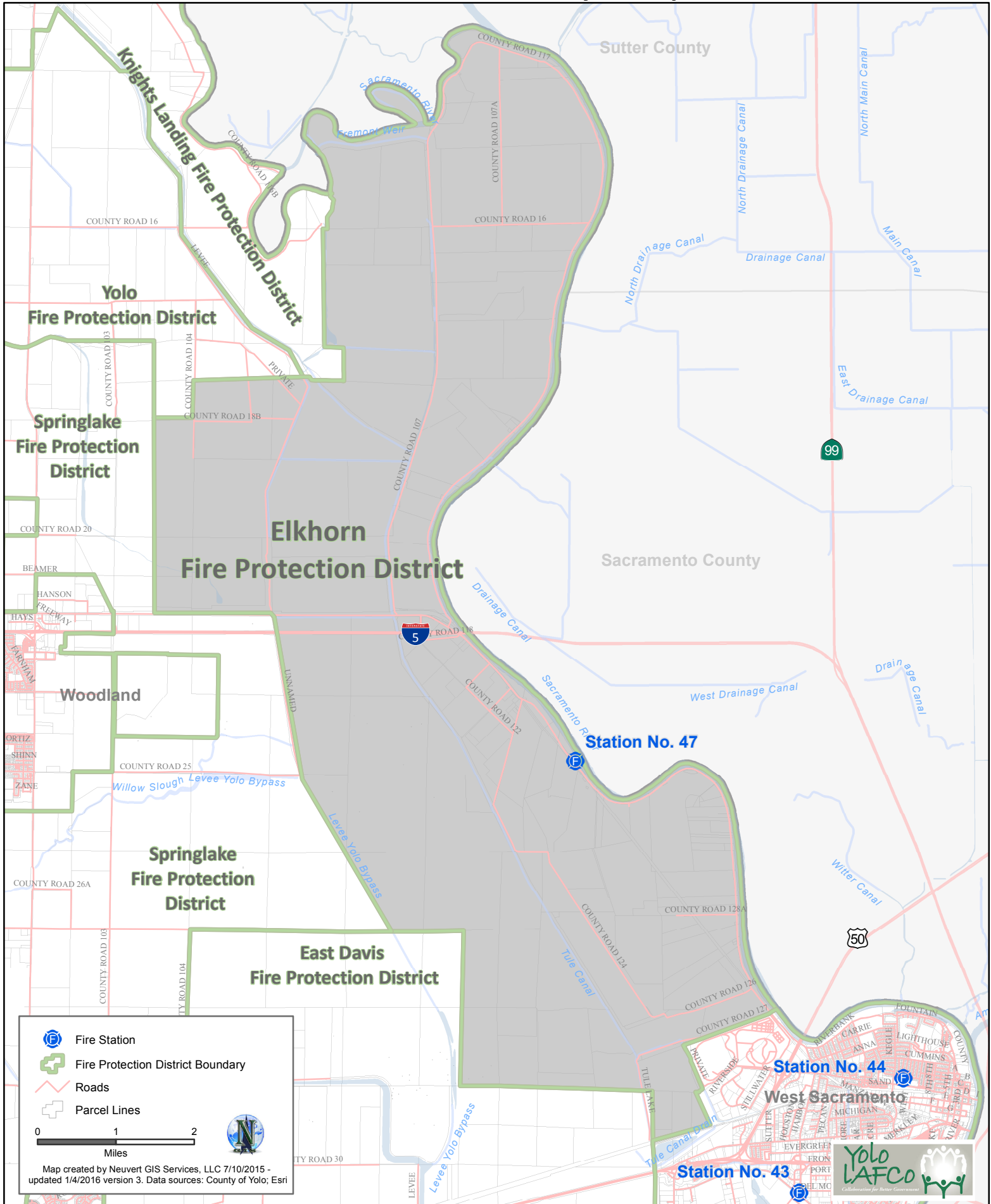
Map created by Neuvirt GIS Services, LLC 7/10/2015 - updated 1/4/2016 version 3. Data sources: County of Yolo; Esri

* Note: Sphere of Influence is coterminous with boundary

Adopted by Yolo LAFCo



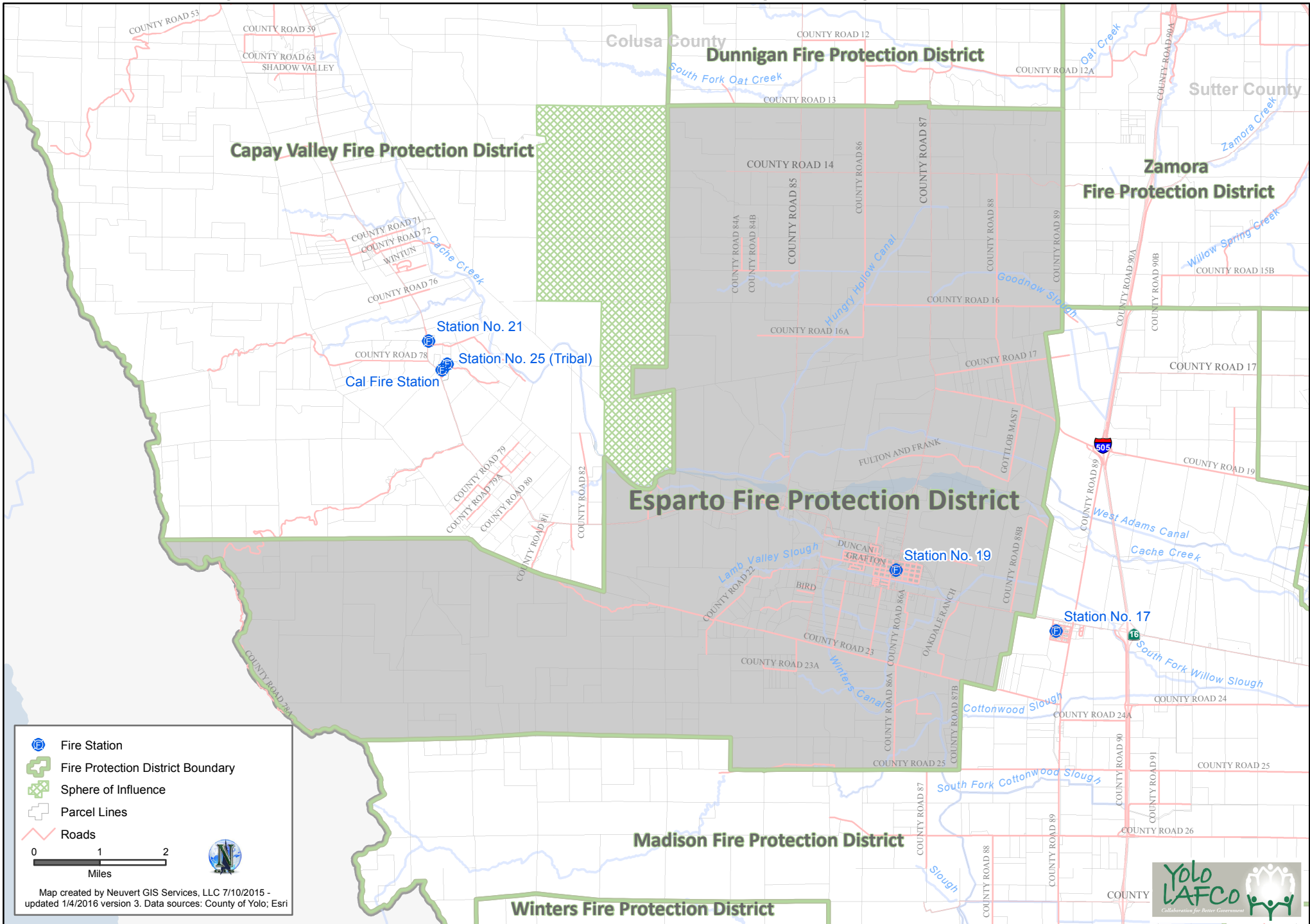
Elkhorn Fire Protection District Boundary and Sphere of Influence*



* Note: Sphere of Influence is coterminous with boundary

Adopted by Yolo LAFCo

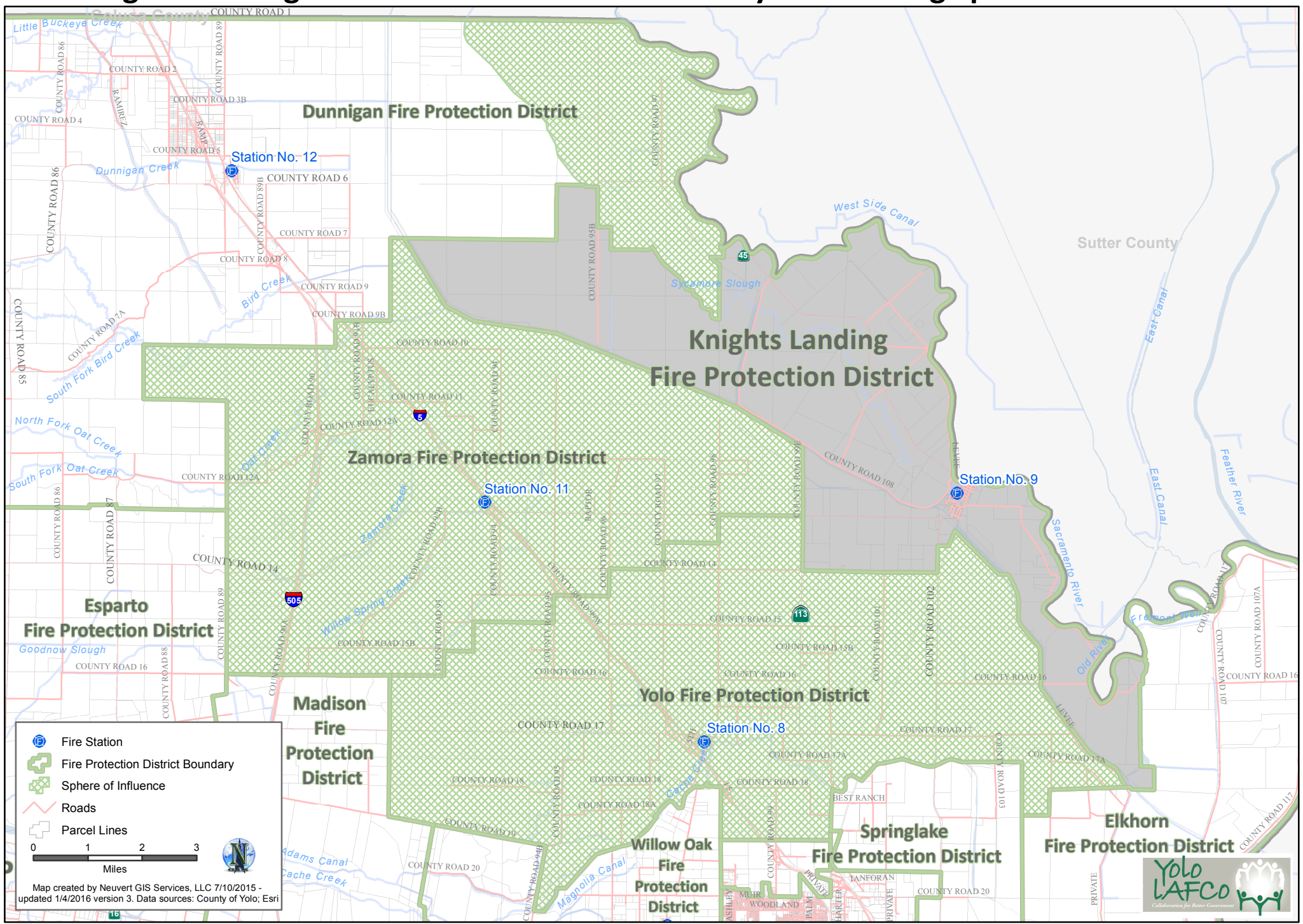
Esparto Fire Protection District Boundary and Sphere of Influence



Adopted by Yolo LAFCo



Knights Landing Fire Protection District Boundary and Existing Sphere of Influence



Fire Station
 Fire Protection District Boundary
 Sphere of Influence
 Roads
 Parcel Lines

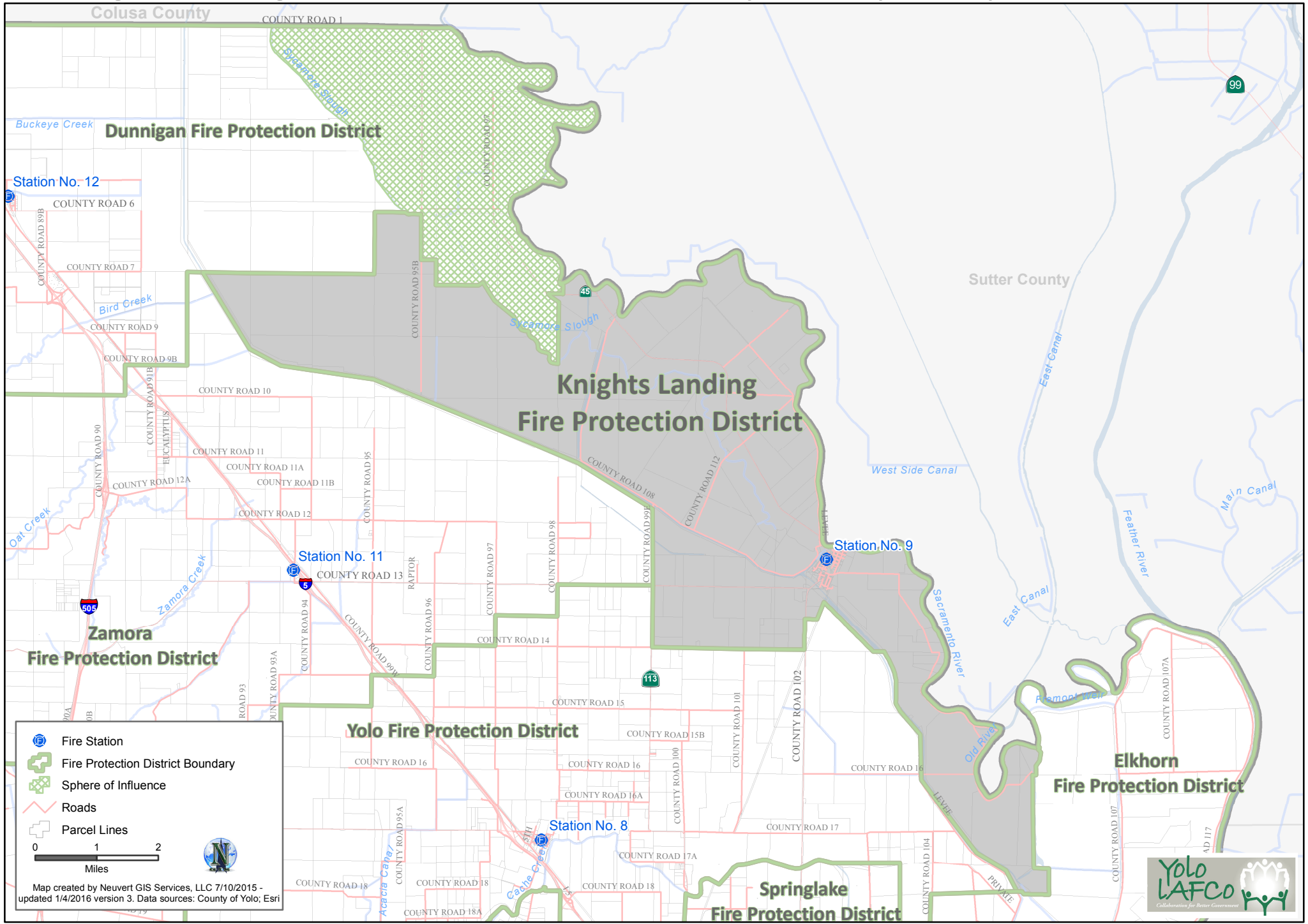
0 1 2 3
 Miles

Map created by Neuvirt GIS Services, LLC 7/10/2015 -
 updated 1/4/2016 version 3. Data sources: County of Yolo; Esri



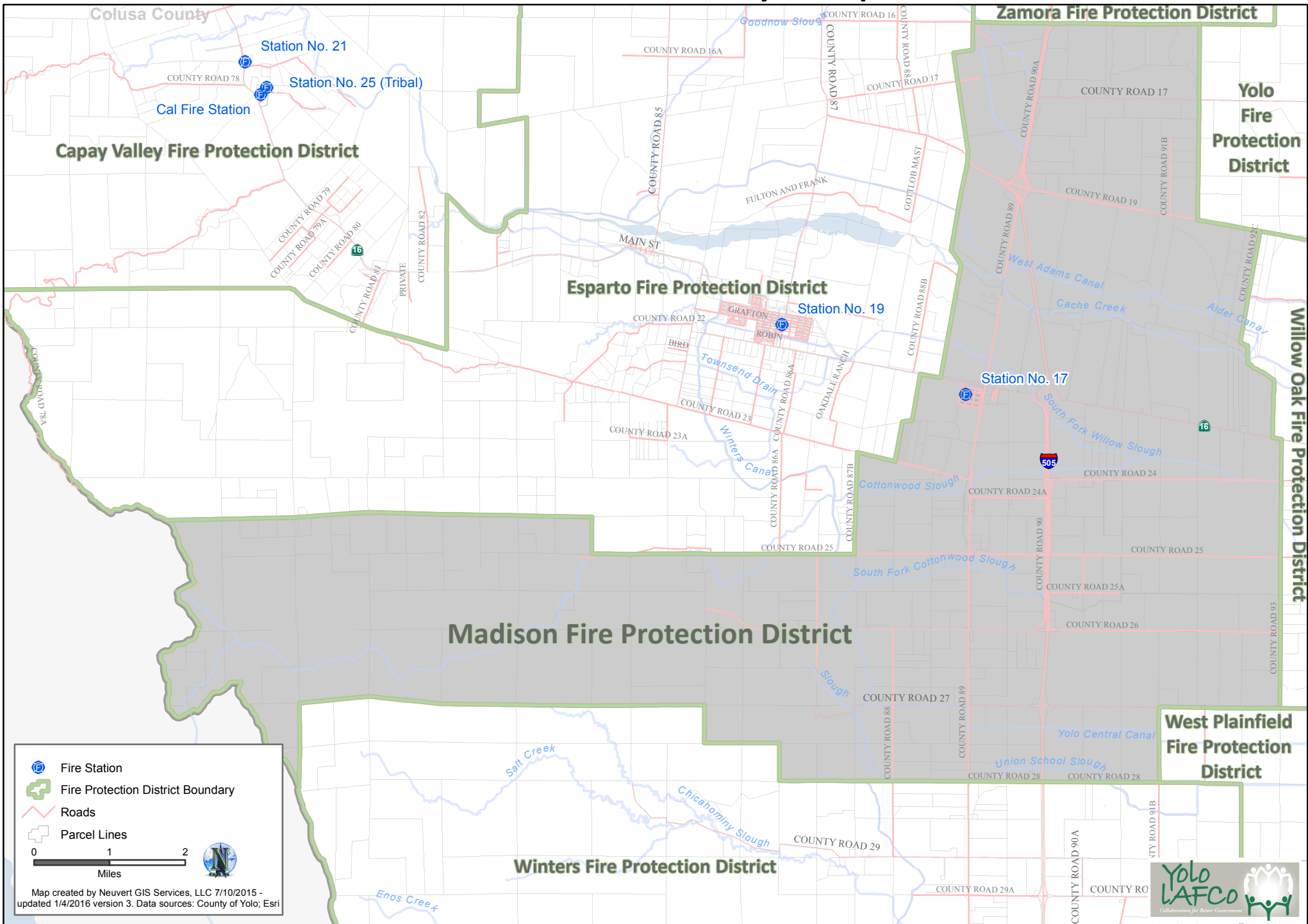
Adopted by Yolo LAFCo

Knights Landing Fire Protection District Boundary and Proposed Sphere of Influence



Adopted by Yolo LAFCo

Madison Fire Protection District Boundary and Sphere of Influence*

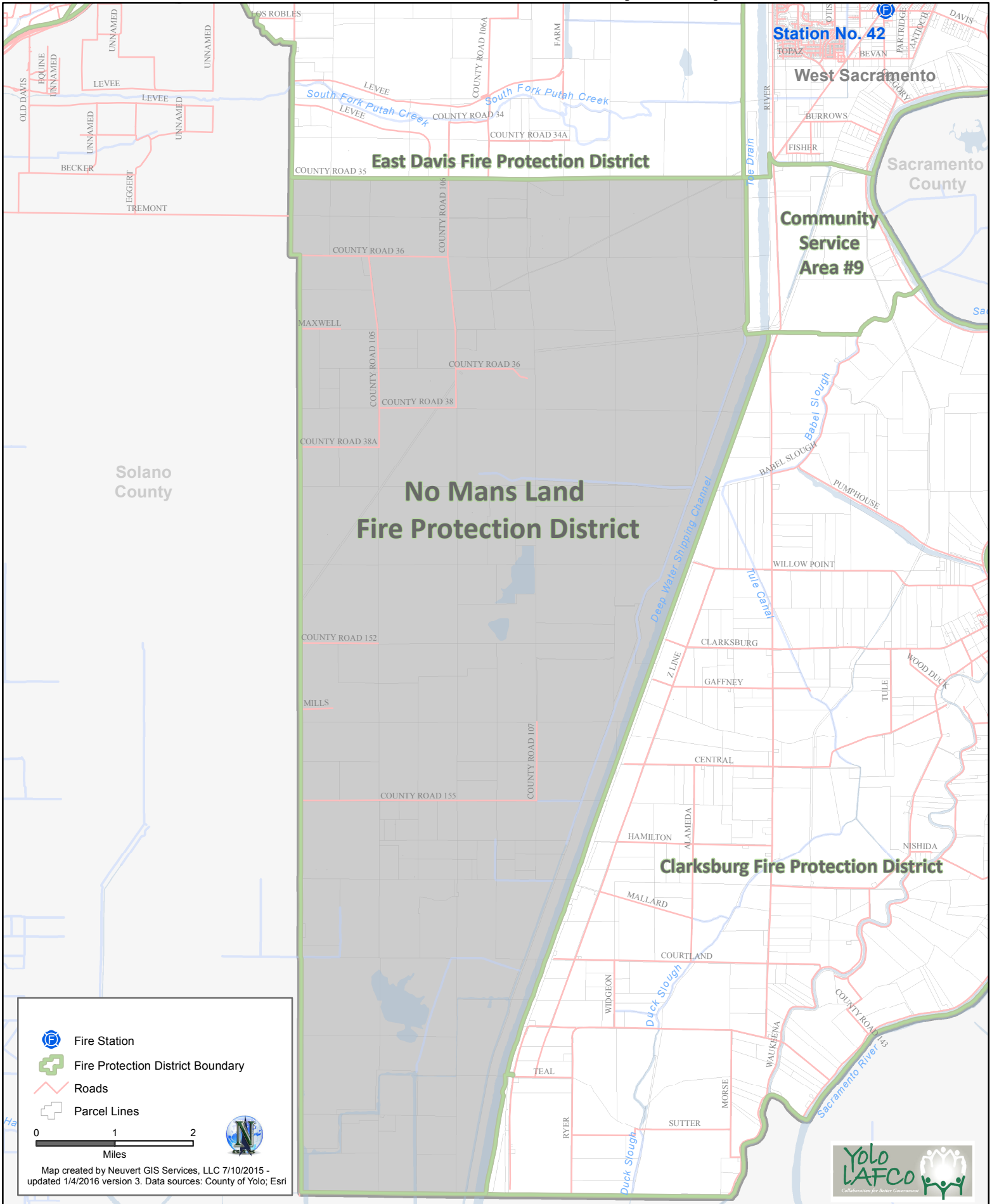


* Note: Sphere of Influence is coterminous with boundary

Adopted by Yolo LAFCo



No Mans Land Fire Protection District Boundary and Sphere of Influence*



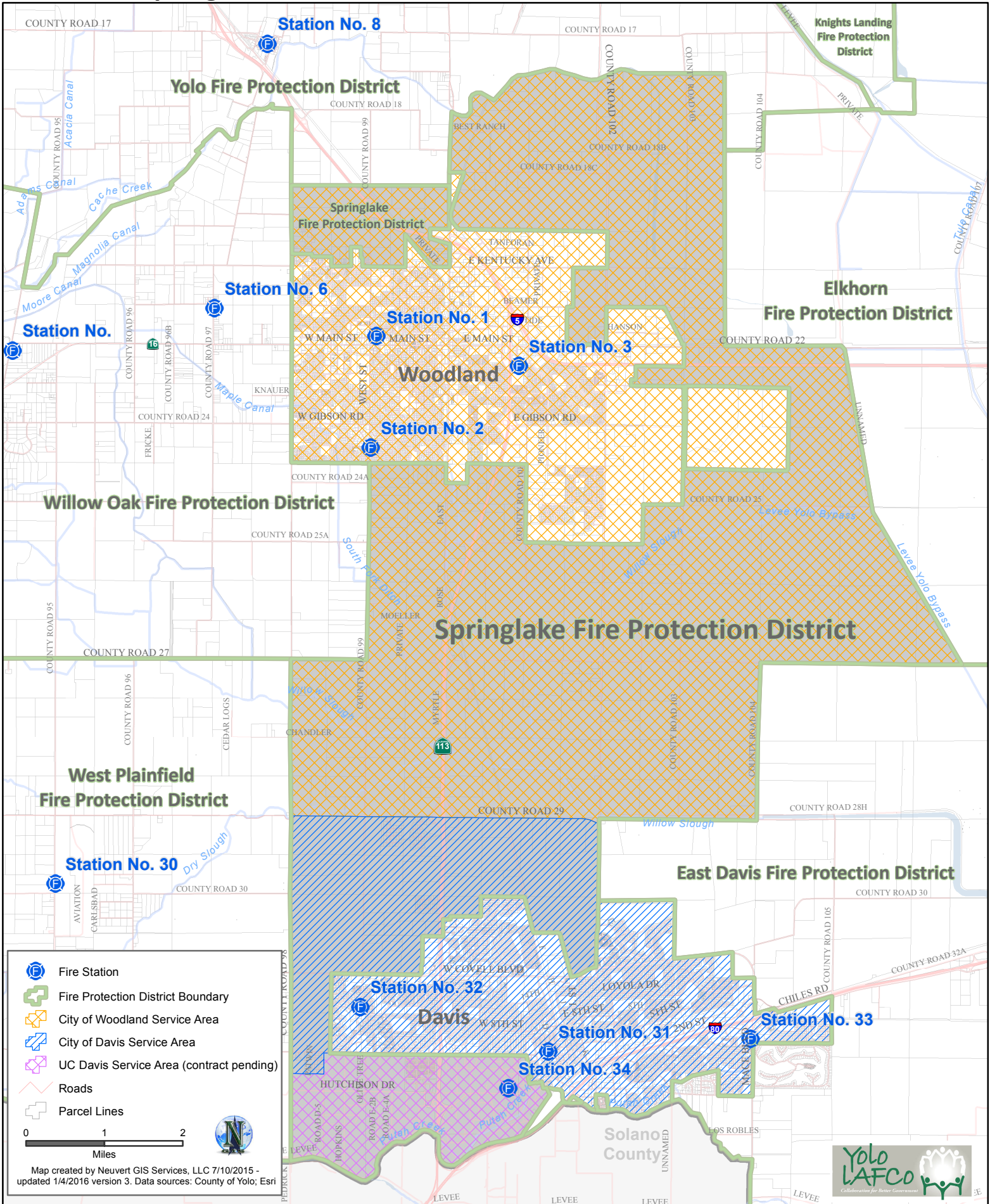
* Note: Sphere of Influence is coterminous with boundary

Adopted by Yolo LAFCo



Map created by Neuvirt GIS Services, LLC 7/10/2015 - updated 1/4/2016 version 3. Data sources: County of Yolo; Esri

Springlake Fire Protection District Contract Service Areas



Legend

- Fire Station
- Fire Protection District Boundary
- City of Woodland Service Area
- City of Davis Service Area
- UC Davis Service Area (contract pending)
- Roads
- Parcel Lines

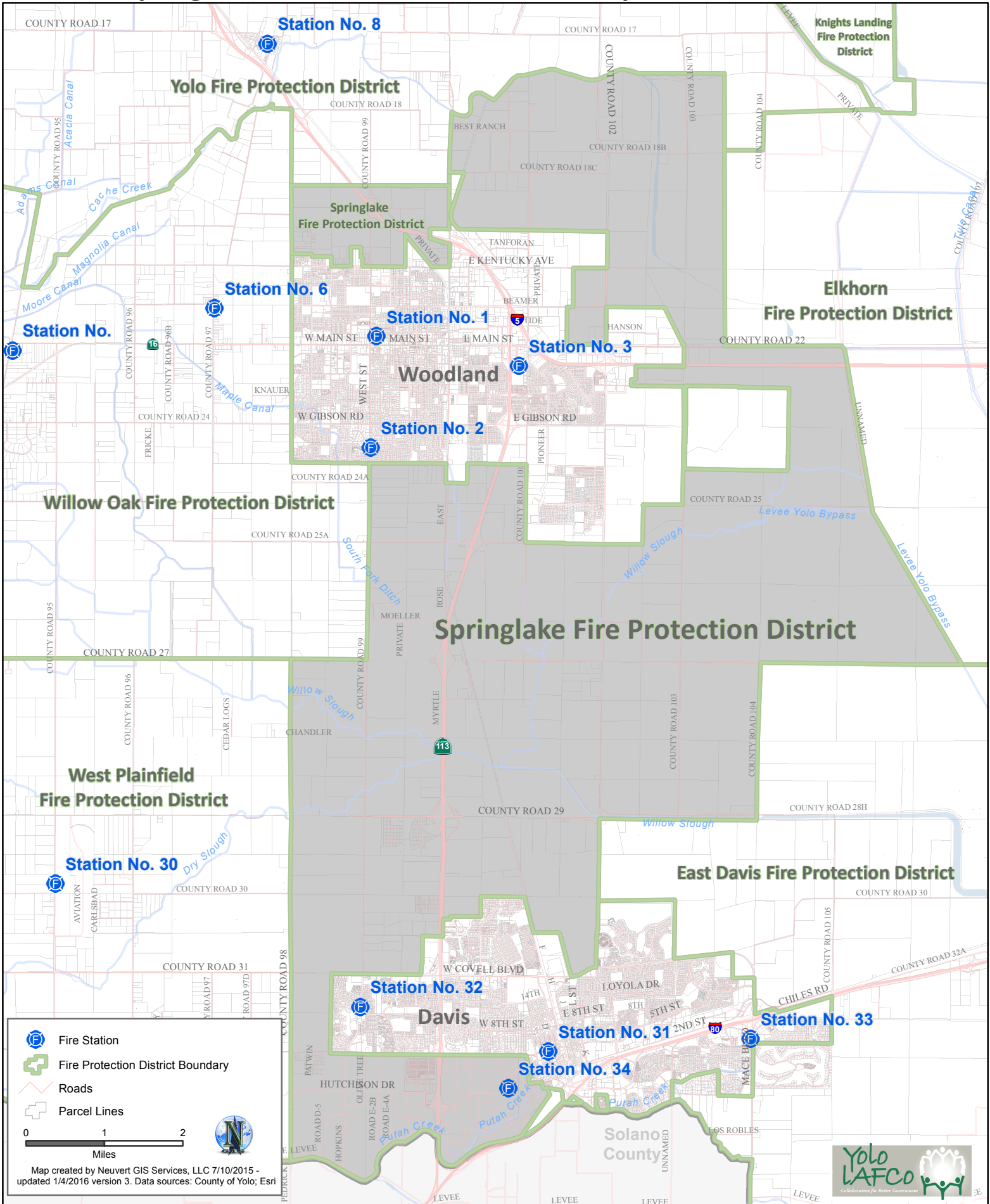
0 1 2 Miles

Map created by Neuvort GIS Services, LLC 7/10/2015 - updated 1/4/2016 version 3. Data sources: County of Yolo; Esri



Adopted by Yolo LAFCo

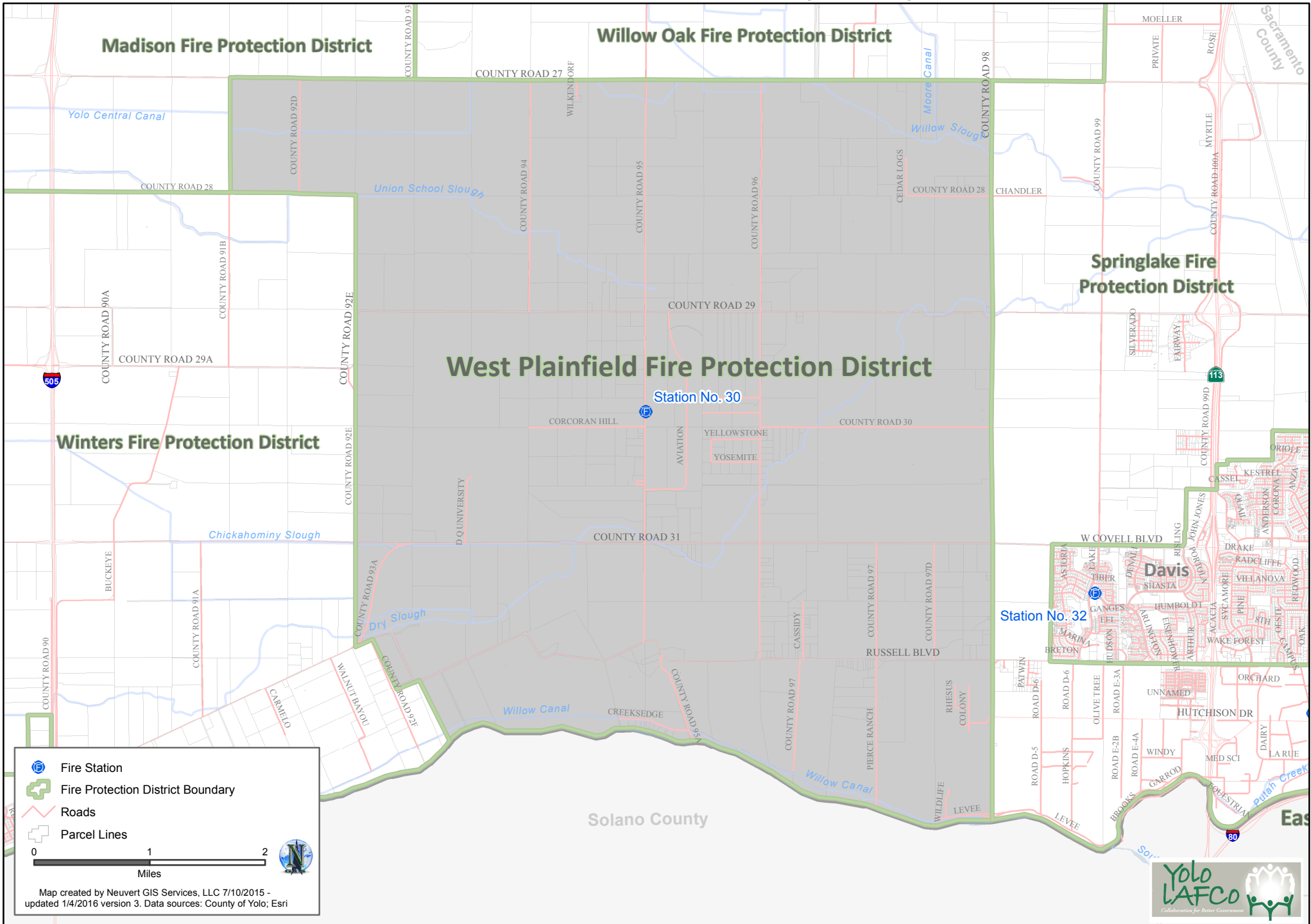
Springlake Fire Protection District and Sphere of Influence*



* Note: Sphere of Influence is coterminous with boundary

Adopted by Yolo LAFCo

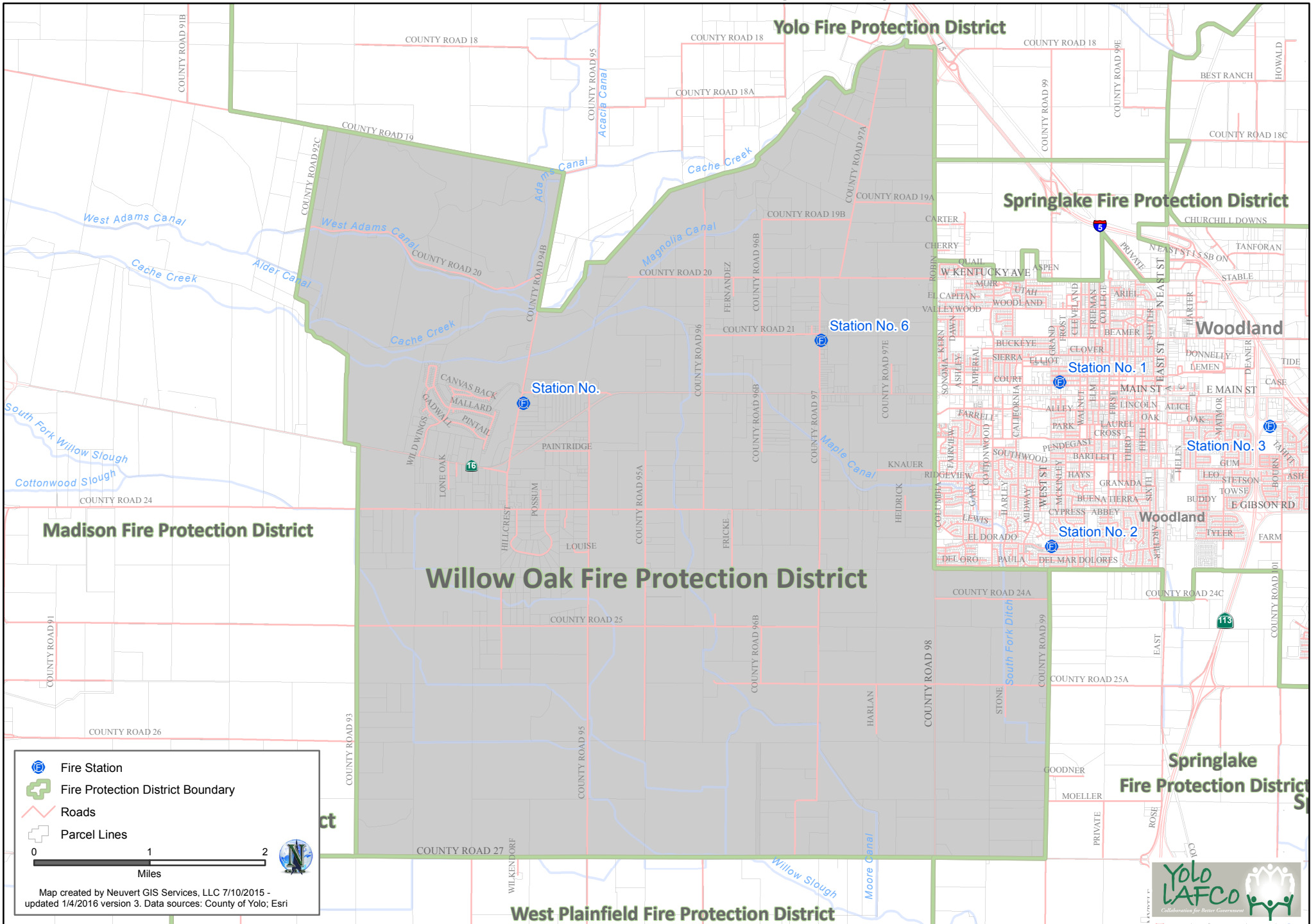
West Plainfield Fire Protection District Boundary and Sphere of Influence*



* Note: Sphere of Influence is coterminous with boundary



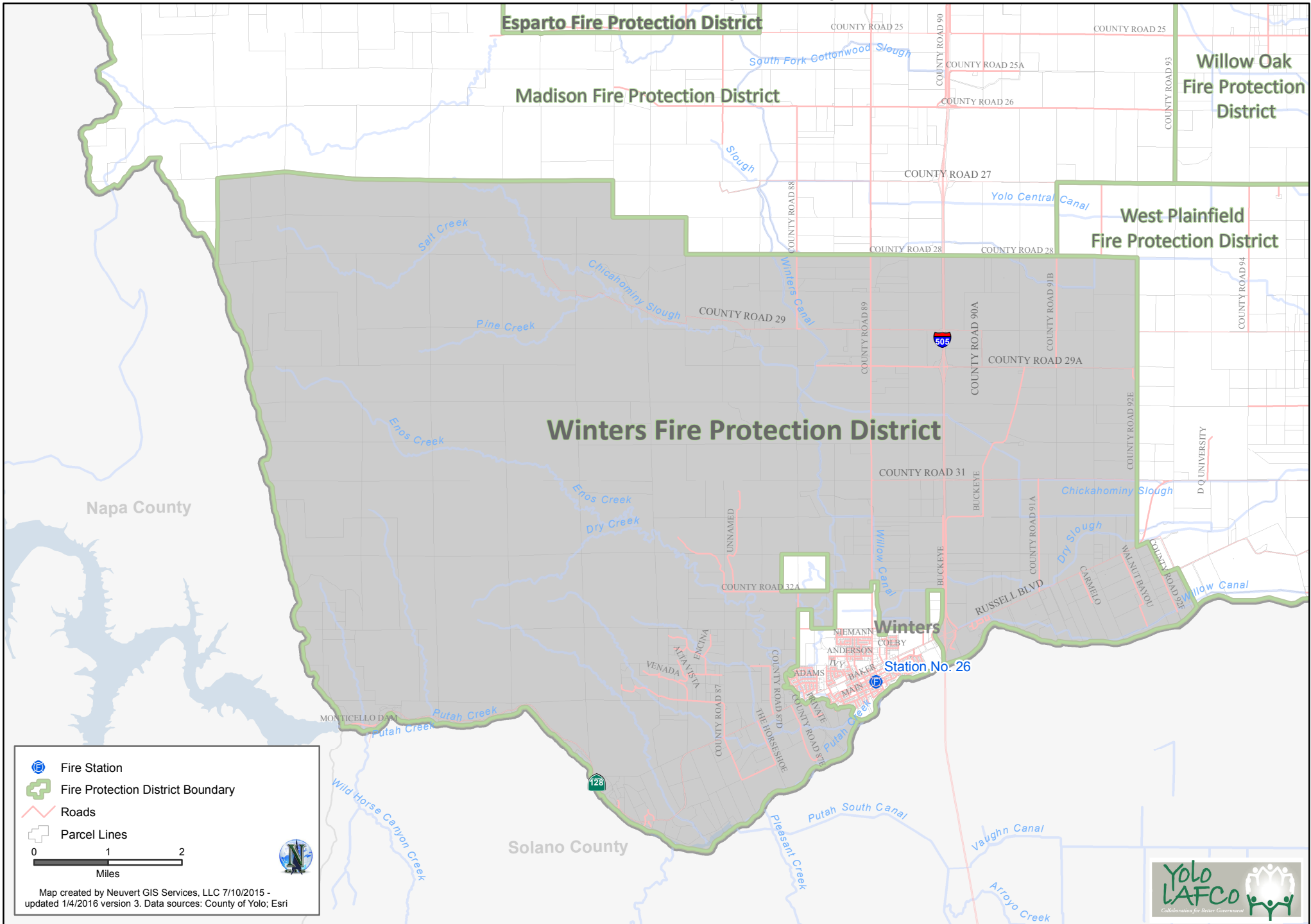
Willow Oak Fire Protection District Boundary and Sphere of Influence*



* Note: Sphere of Influence is coterminous with boundary

Adopted by Yolo LAFCo

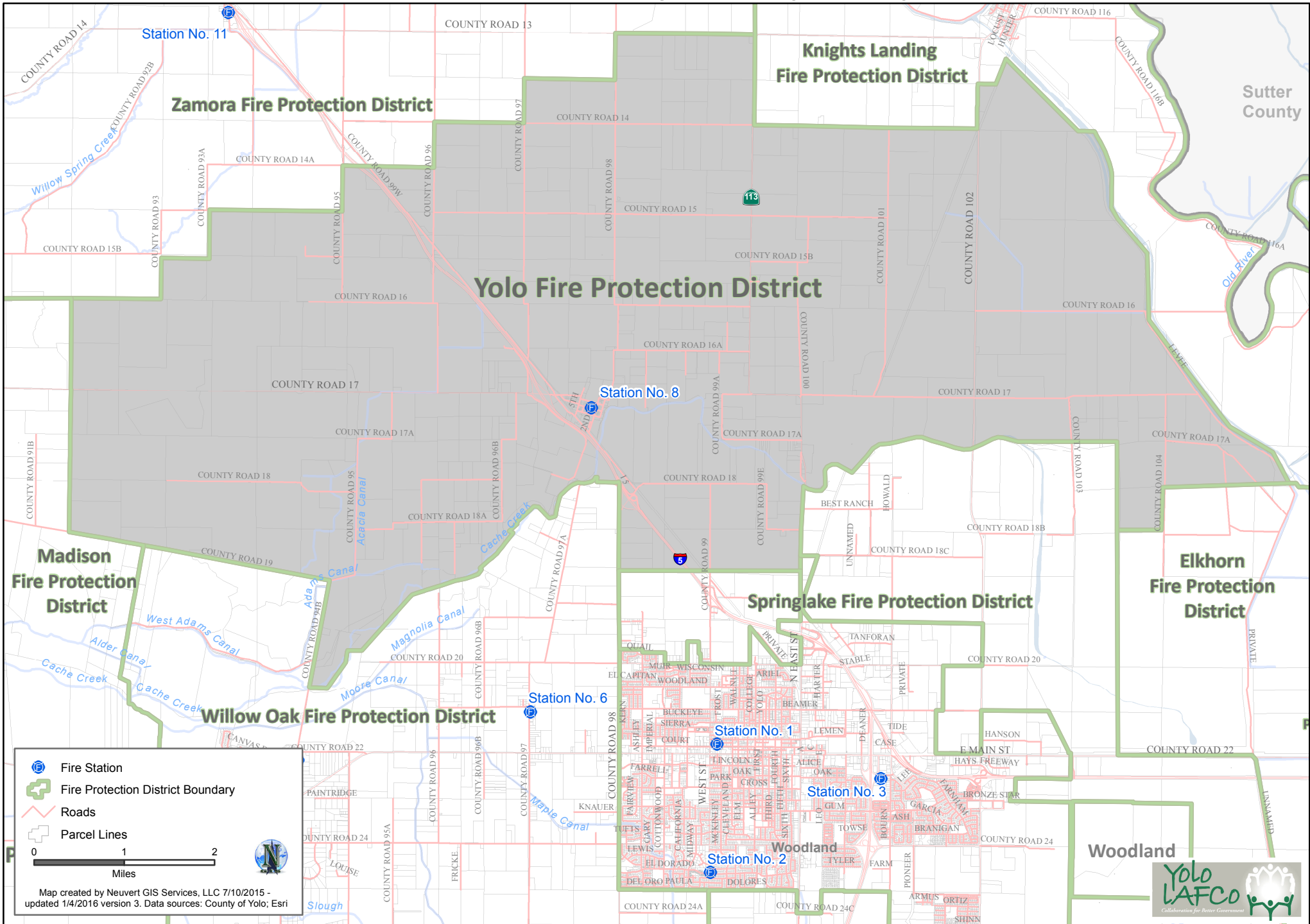
Winters Fire Protection District Boundary and Sphere of Influence*



* Note: Sphere of Influence is coterminous with boundary

Adopted by Yolo LAFCo

Yolo Fire Protection District Boundary and Proposed Sphere of Influence*

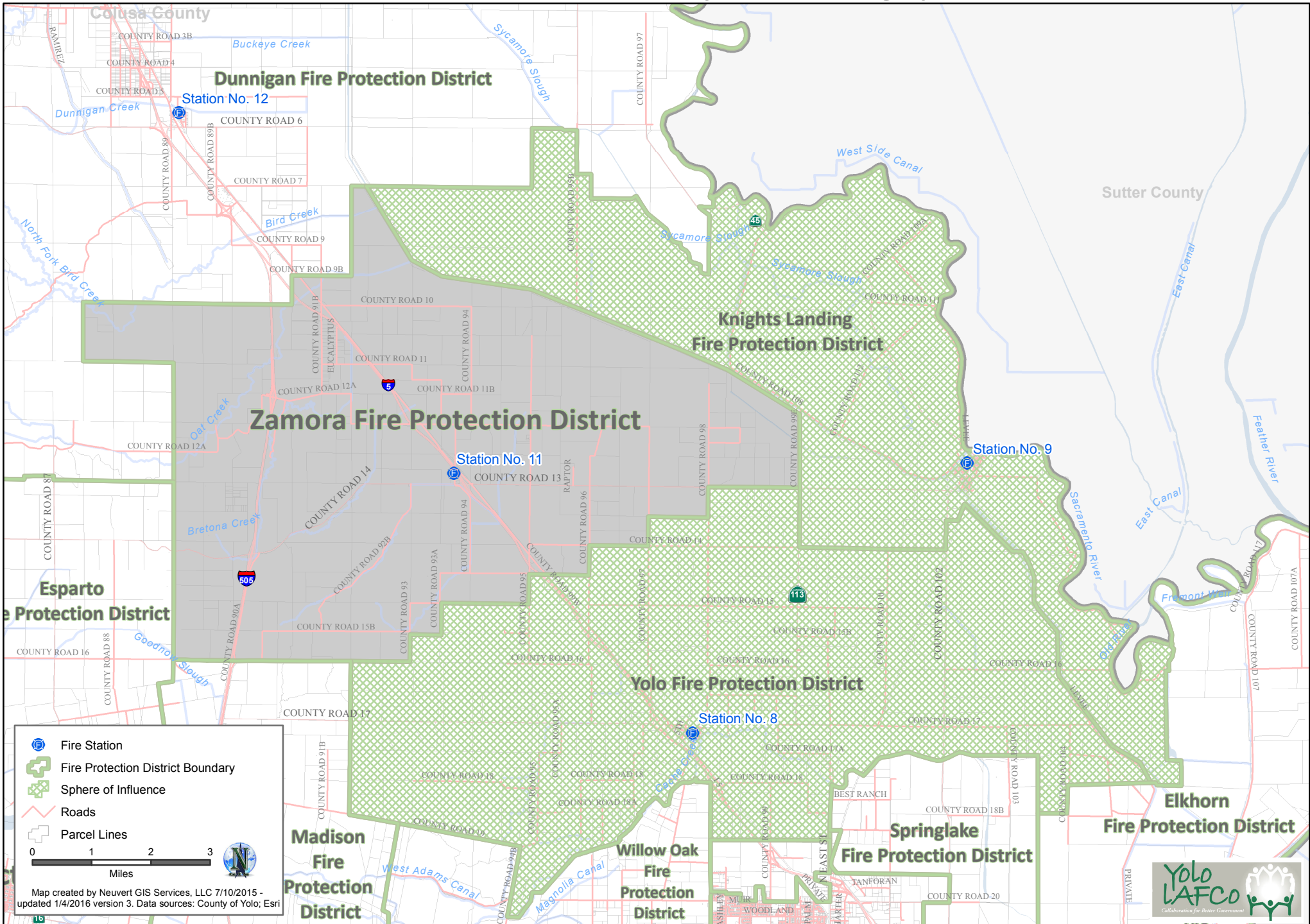


* Note: Sphere of Influence is coterminous with boundary

Adopted by Yolo LAFCo



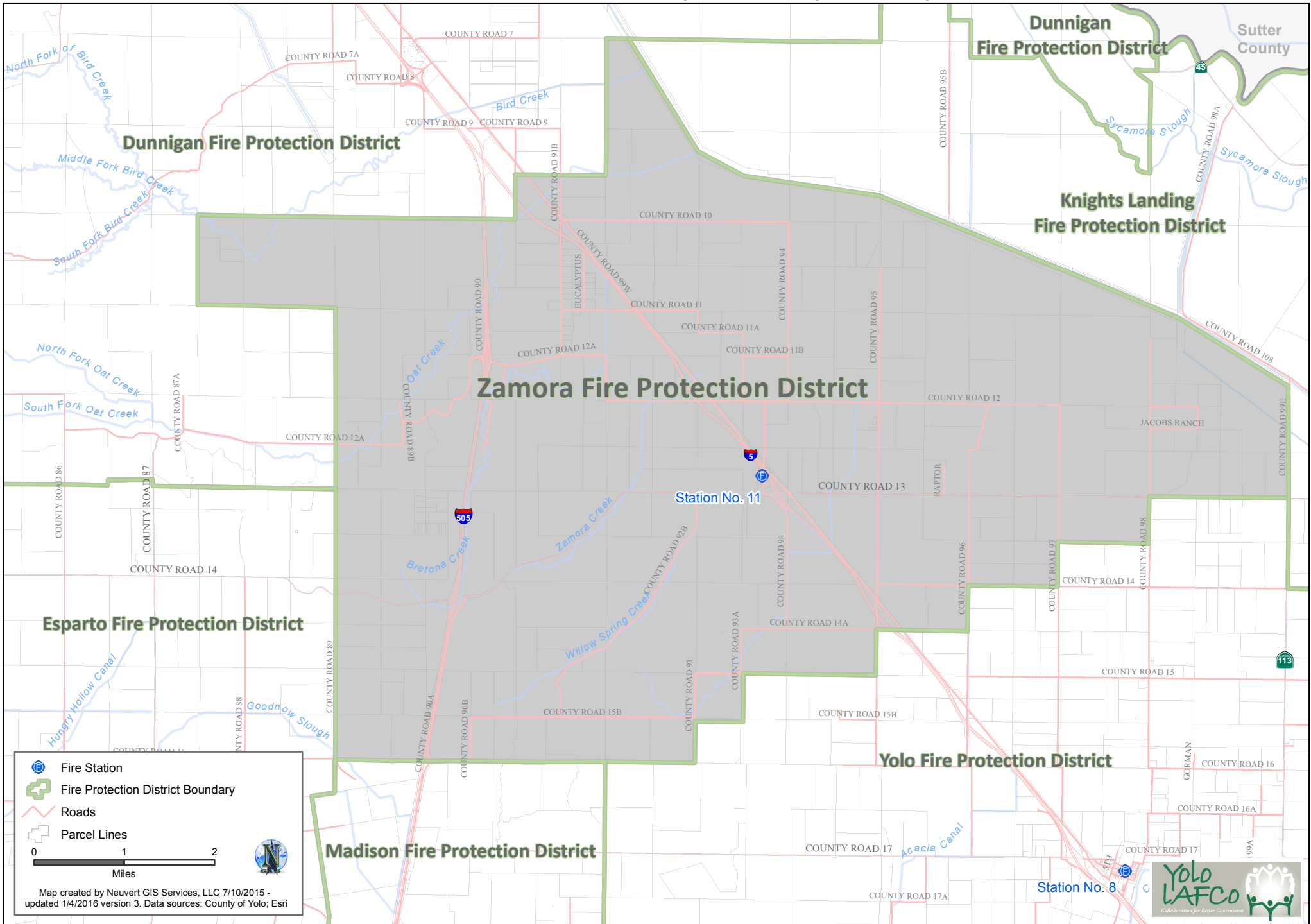
Zamora Fire Protection District Boundary and Existing Sphere of Influence



Adopted by Yolo LAFCo



Zamora Fire Protection District Boundary and Proposed Sphere of Influence*



* Note: Sphere of Influence is coterminous with boundary

Adopted by Yolo LAFCo

