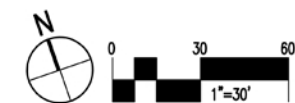




PROJECT ELEMENTS

- AQUATICS BUILDING W/ ASSOCIATED LANDSCAPE
  - GROUP GATHERING AREA ROOFED, NOT ENCLOSED
  - CHANGING ROOMS/RESTROOMS, NOT CONDITIONED
  - EQUIPMENT AREA/S, CHAIN LINK ENCLOSURE WITH SLATS, ROOF
  - OUTDOOR SHOWERS
  - OFFICE/STORAGE BUILDING SPACE
  - SNACK BAR, NOT CONDITIONED
  - FIELD RESTROOMS
  - DRINKING FOUNTAIN
- 59'X75', 8 LANE, 3'-6" TO 7' DEEP, POOL
- 40'X40', 0' TO 12'-18" DEEP, YOUTH/WADING POOL
- POOL DECK
- LIGHTING FOR POOL AREA
- 6' TUBE STEEL POOL AREA FENCE
- 60 CAR CRUSHED ROCK PARKING AREA W/ CONCRETE ACCESSIBLE STALLS & ASSOCIATED LANDSCAPE AND IRRIGATION
- DECELERATION LANE, YOLO AVENUE
- 1/4 MILE 6' DECOMPOSED GRANITE TRAIL W/ ASSOCIATED LANDSCAPING
- PEDESTRIAN BRIDGE W/ ADA ACCESS TO HIGH SCHOOL
- CENTRAL GATHERING AREA
- FULL BASKETBALL COURT
- CONCRETE WALKWAYS
- TRASH RECEPTACLES (4)
- 6' CHAIN LINK FENCE AT EAST AND SOUTH SIDES OF PARK WITH MAINTENANCE ACCESS
- 1-60'X100' ADULT SOCCER FIELD WITH BLEACHER AREAS
- 2-50'X80' U-12/13 SOCCER FIELDS WITH SHARED BLEACHER AREAS
- 200' LITTLE LEAGUE BASEBALL/SOFTBALL FIELD WITH ASSOCIATED FENCING, BENCHES AND BLEACHER AREAS
- FIELD DRINKING FOUNTAIN



July 26, 2017