

# Annual Update: Yolo County MCAH Data Social Determinants of Health

MCAH Advisory Board Retreat  
January 18, 2017

Jan Babb, MSN, RN, PNP  
MCAH Director  
Community Health Branch Director  
Yolo County HHSA

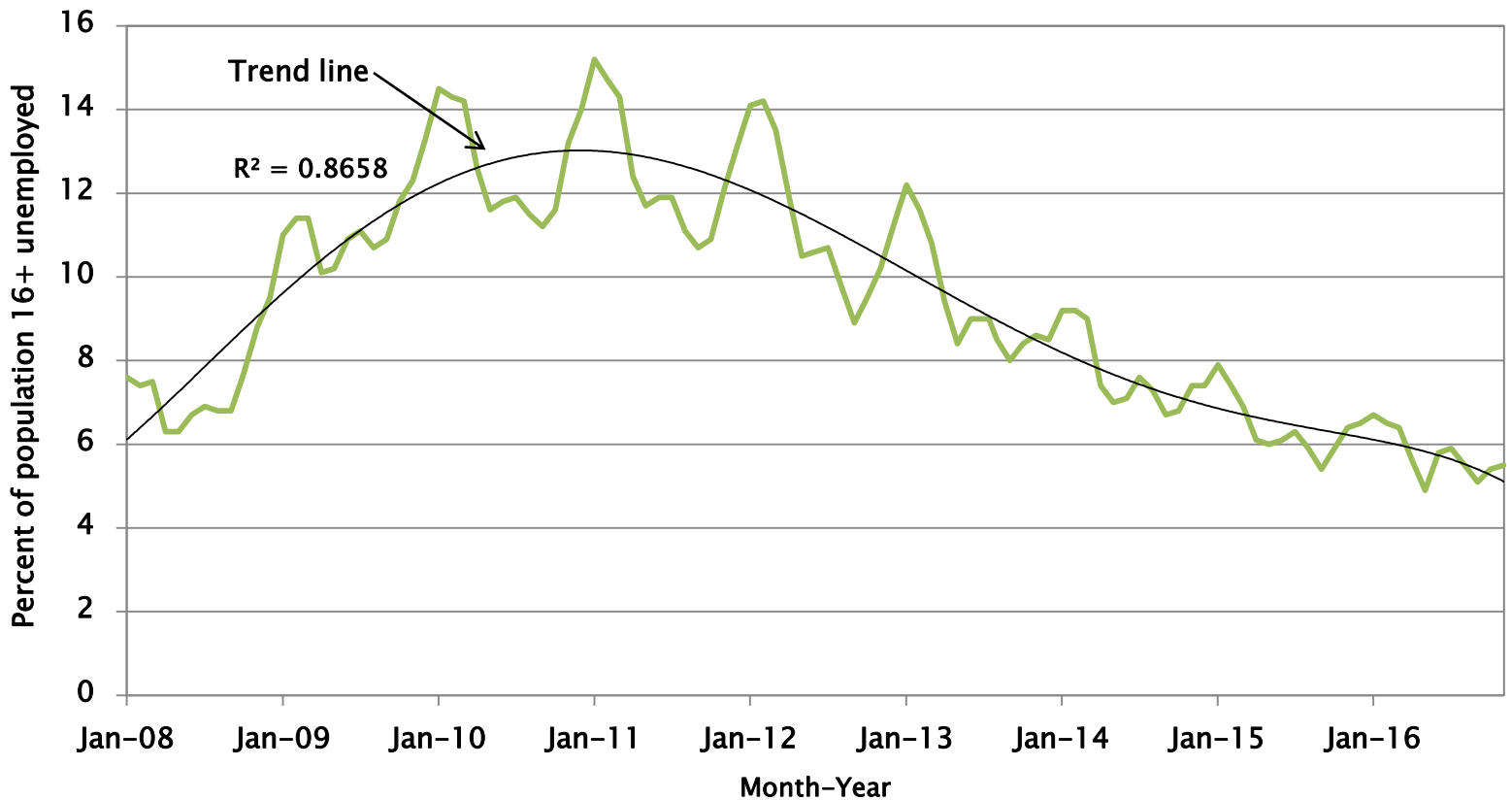
# Conceptual Framework for MCAH



# What are Social Determinants of Health?

- ▶ Social and physical environments that promote good health
  - the nature of our social interactions and relationships
  - access to social and economic opportunities
  - the quality of our education
  - the safety of our home, workplace and school
  - the cleanliness of our water, food, and air

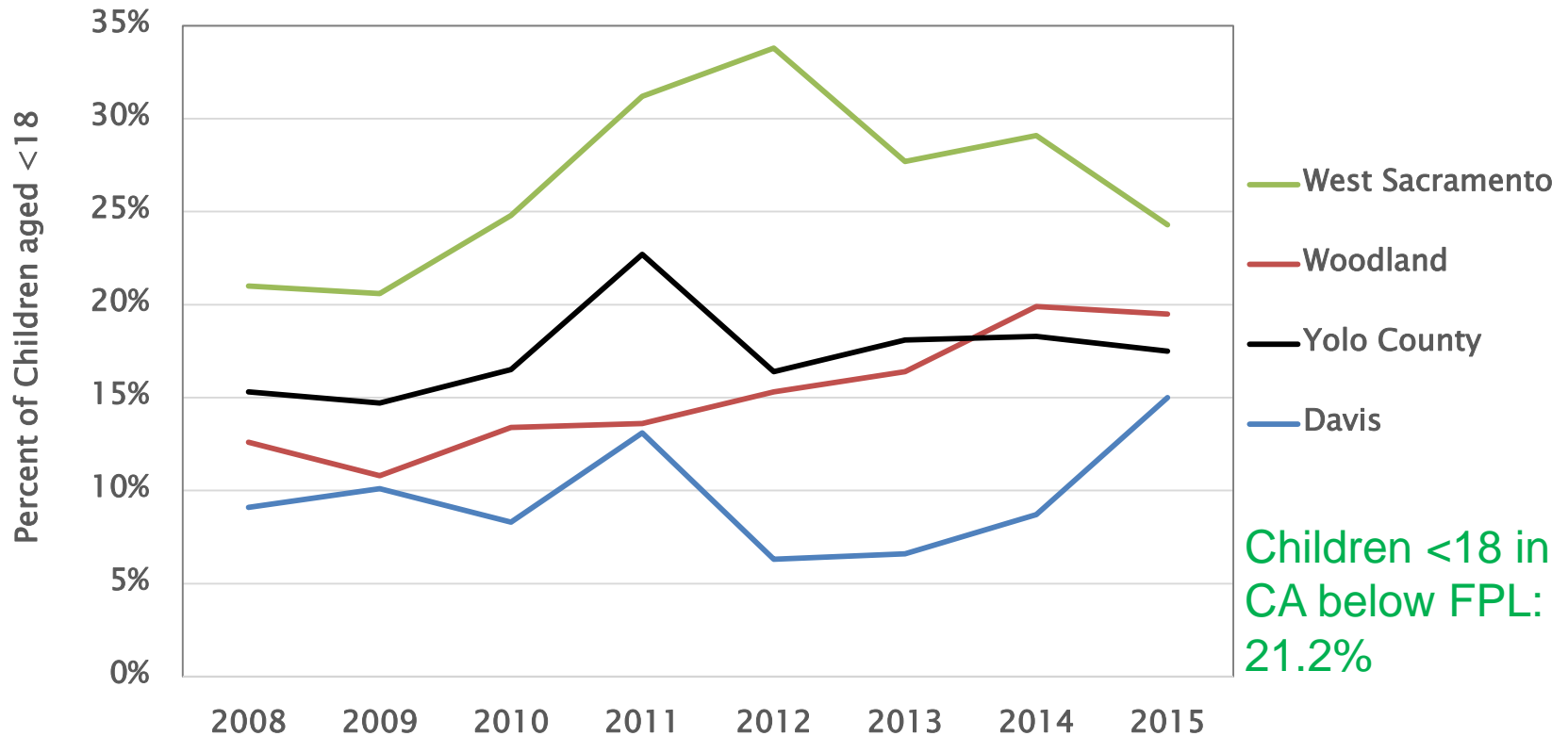
# Unemployment Rate, Yolo County, 2008–2016



Source: Bureau of Labor Statistics

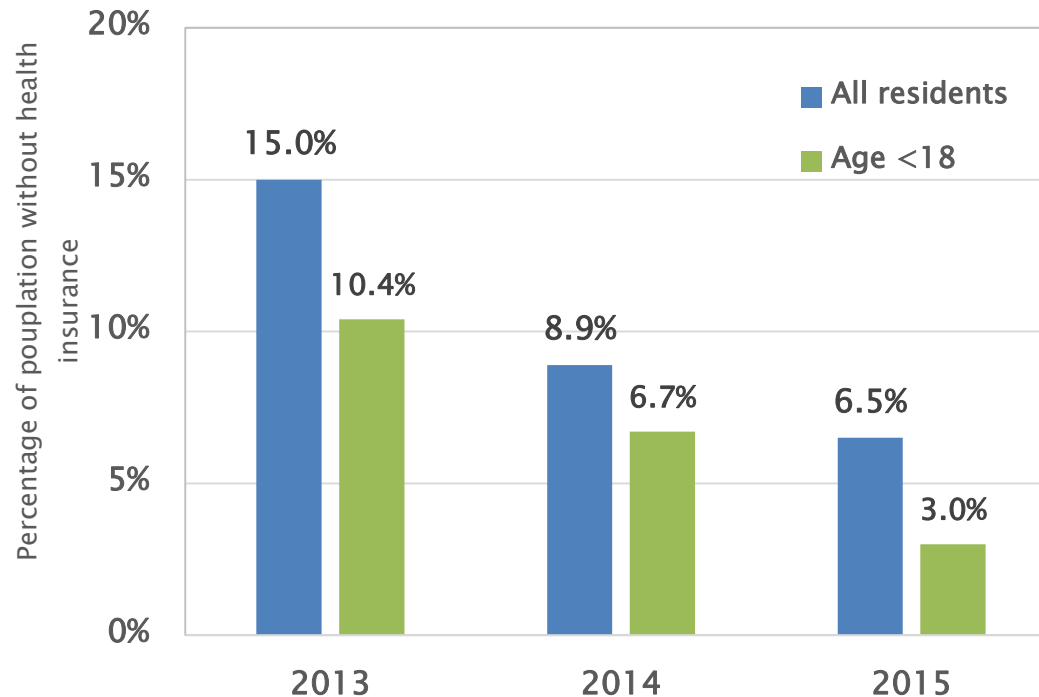
CA rate (Nov 2016): 5.3%

# Percent of Yolo County Children $\leq 100\%$ of Federal Poverty Level by City, 2008–2015



Source: US Census, American Community Survey, Table B17001 (5-year estimates; 1-year for Yolo County)

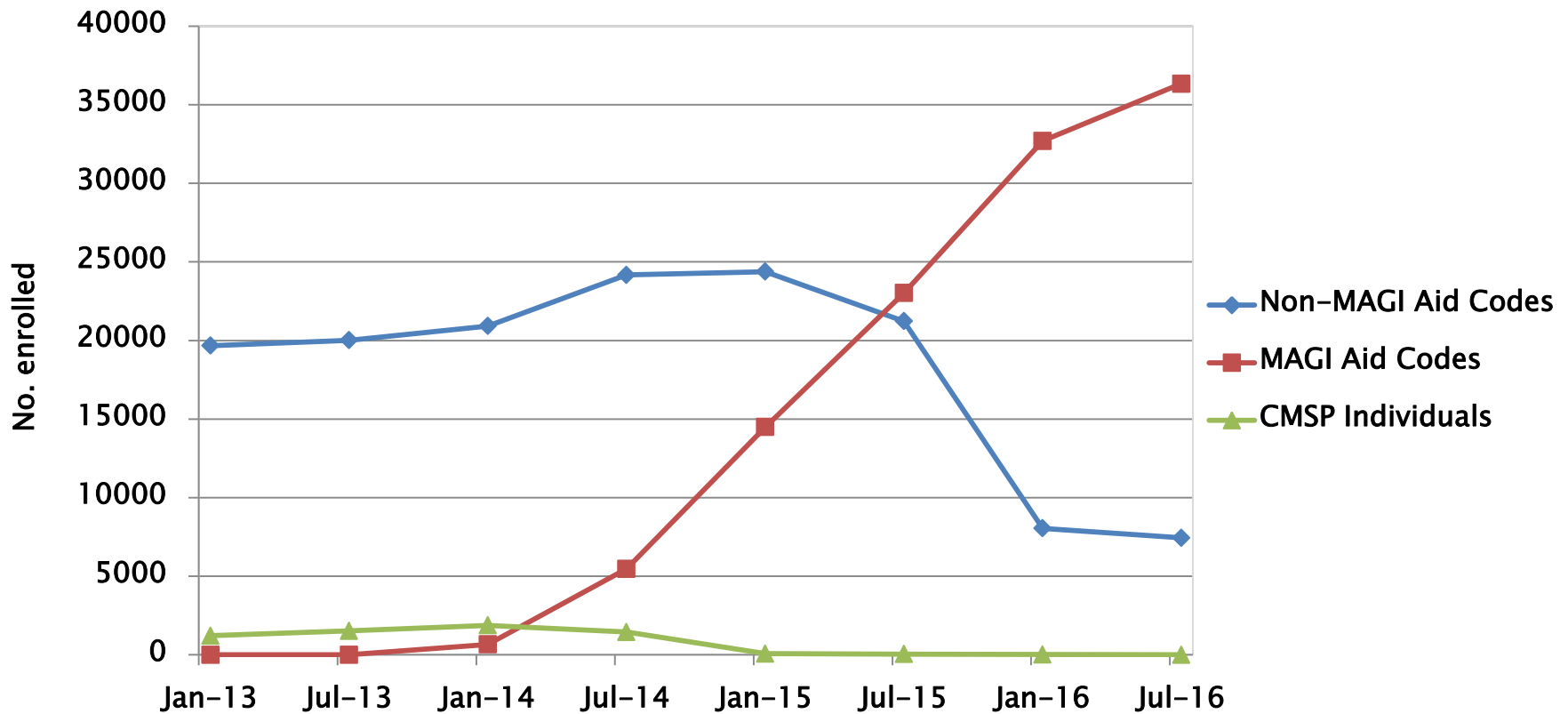
# Percent of Yolo County Residents without Health Insurance, 2013–2015



Uninsured CA:  
Adults: 8.6%  
Children: 3.3%

Source: American Community Survey, US Census, 1-year estimate, Table DP03.

# Medi-Cal and CMSP Enrollment in Yolo County, 2014-16



Data Source: Yolo County HHSA Service Centers

# Hardships and Support during Pregnancy, 2013–14

Description	Yolo County	California	Different from CA
Experienced 2+ hardships during childhood	22.6%	25.3%	No
Woman or partner lost job	16.4%	14.6%	No
Food insecurity	14.0%	16.6%	No
Intimate partner violence (physical/emotional)	7.3%	7.1%	No
Became separated or divorced	4.6%	7.6%	Lower
Had no practical or emotional support	3.3%	4.4%	No
Moved due to problems paying rent or mortgage	2.2%	2.9%	No

**Data Source:** Maternal and Infant Health Assessment (MIHA) Survey, 2013-14. Accessed from <http://www.cdph.ca.gov/> on 1/8/2017.

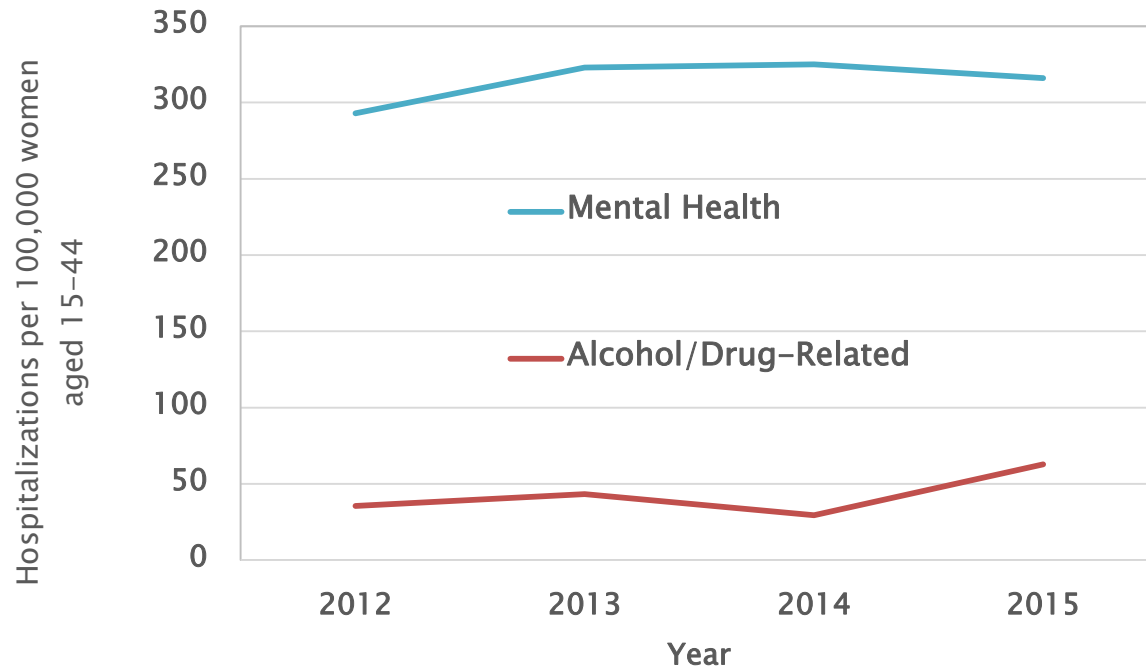


# Perinatal Depression – 2013–14

- 8.1% of women report prenatal depression (95% CI 5.1 - 11.1) – better than CA
- 9.8% of women report postnatal depression (95% CI 6.7 - 13.0) – not different from CA
- Improvement over 14% prevalence of prenatal depression in 2012 (when Yolo County was included in Greater Sacramento Area)

Data Source: Maternal and Infant Health Assessment Survey 2013-14  
Prepared by: Maternal, Child and Adolescent Health Program,  
Center for Family Health, California Department of Public Health

# Mental Health & Alcohol- or Drug-Related Hospitalization Rates, Yolo County Women Aged 15 to 44 yrs



**Mental health admissions have leveled off since 2013, alcohol and drug increased in 2015**

Source: Office of Statewide Planning & Development (OSHPD)

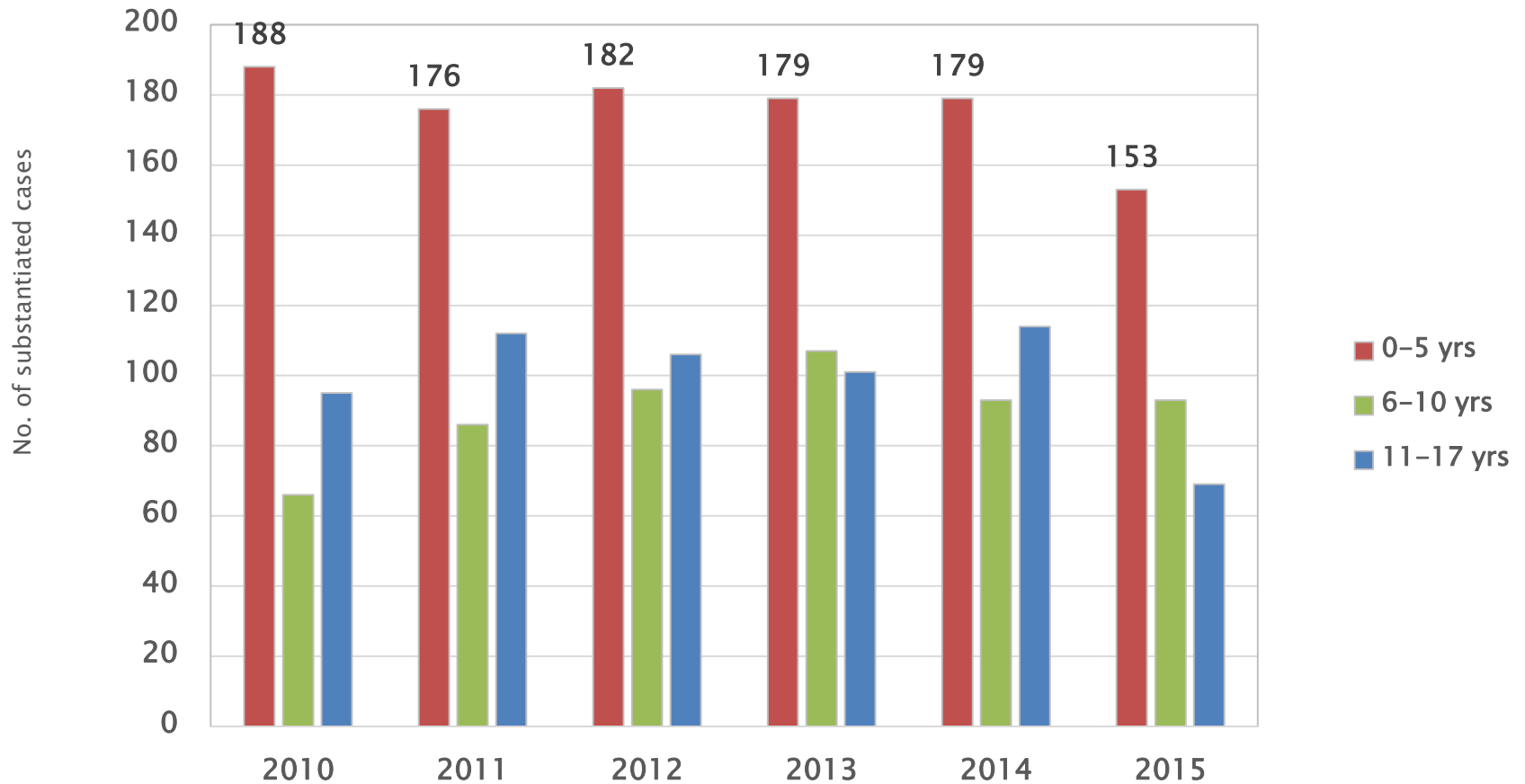
# Adverse Childhood Events\* (ACES) – 2011–12

- ▶ Two or more ACES: Yolo County 18.4% vs. California 18.2%

\*Includes: parental physical or emotional abuse, witnessing abuse of parent, lack of needed food or clothing, parental drug use, parent in jail, parent with mental health issue, loss of parent for divorce or other reason

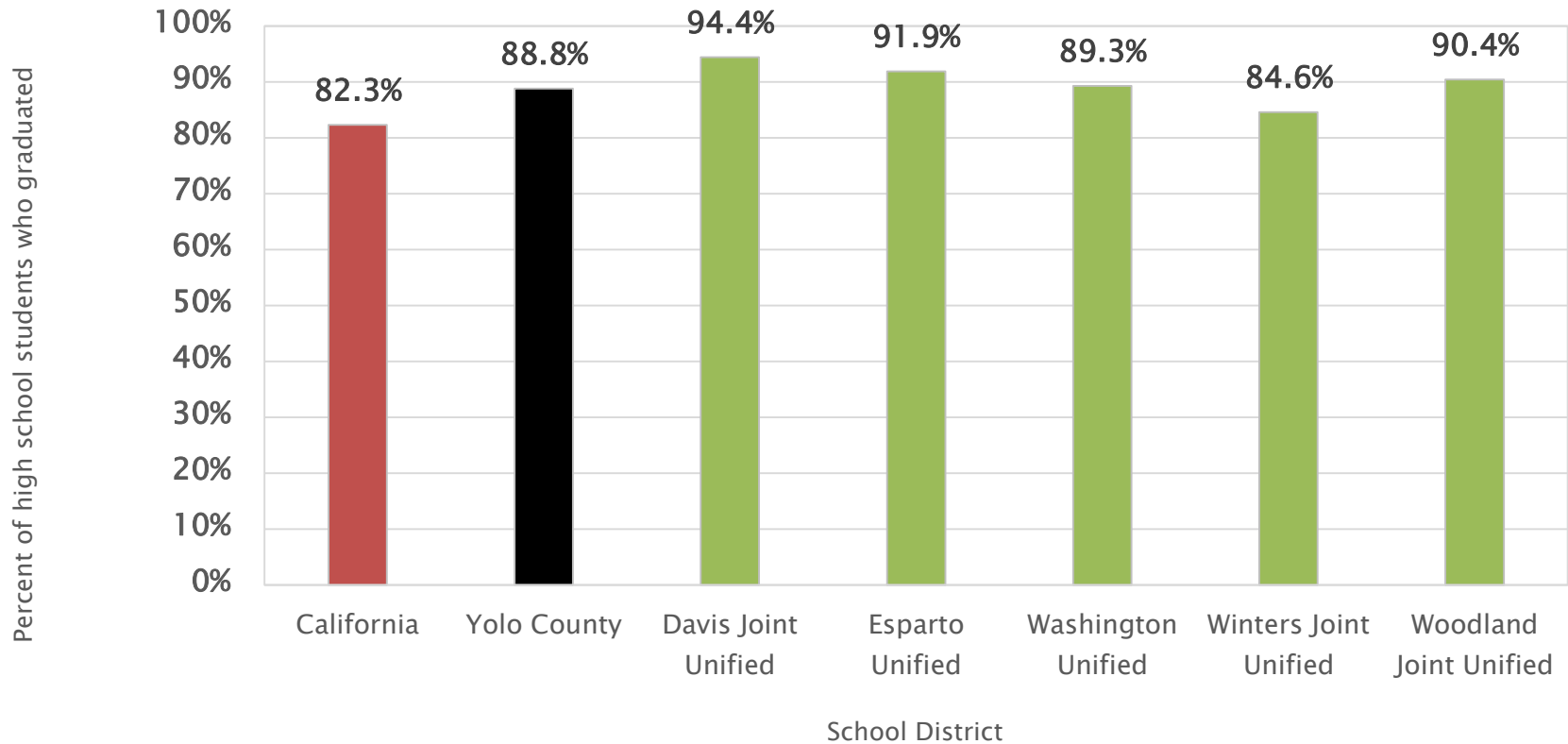
**Data Source:** <http://kidsdata.org> (Jan 2017) extrapolated from the National Children's Health Survey and ACS population estimates

# Substantiated Cases of Child Abuse and Neglect: 2010 – 2015, Yolo County



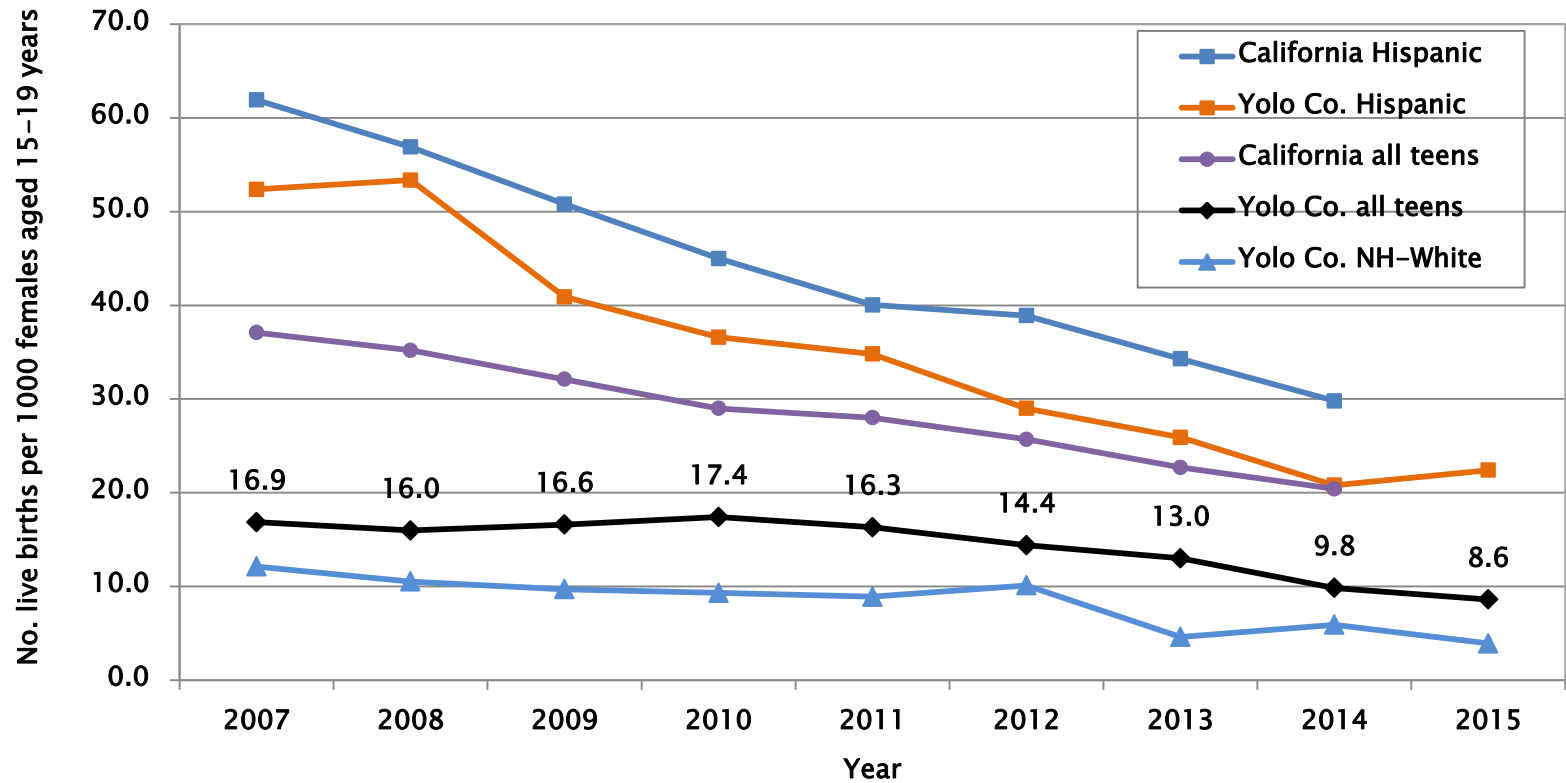
**Data Source:** Center for Social Services Research, UC-Berkeley  
[http://cssr.berkeley.edu/ucb\\_childwelfare/RefRates.aspx](http://cssr.berkeley.edu/ucb_childwelfare/RefRates.aspx) accessed 1/11/2017

# High School Graduation Rates by School District in 2014-15



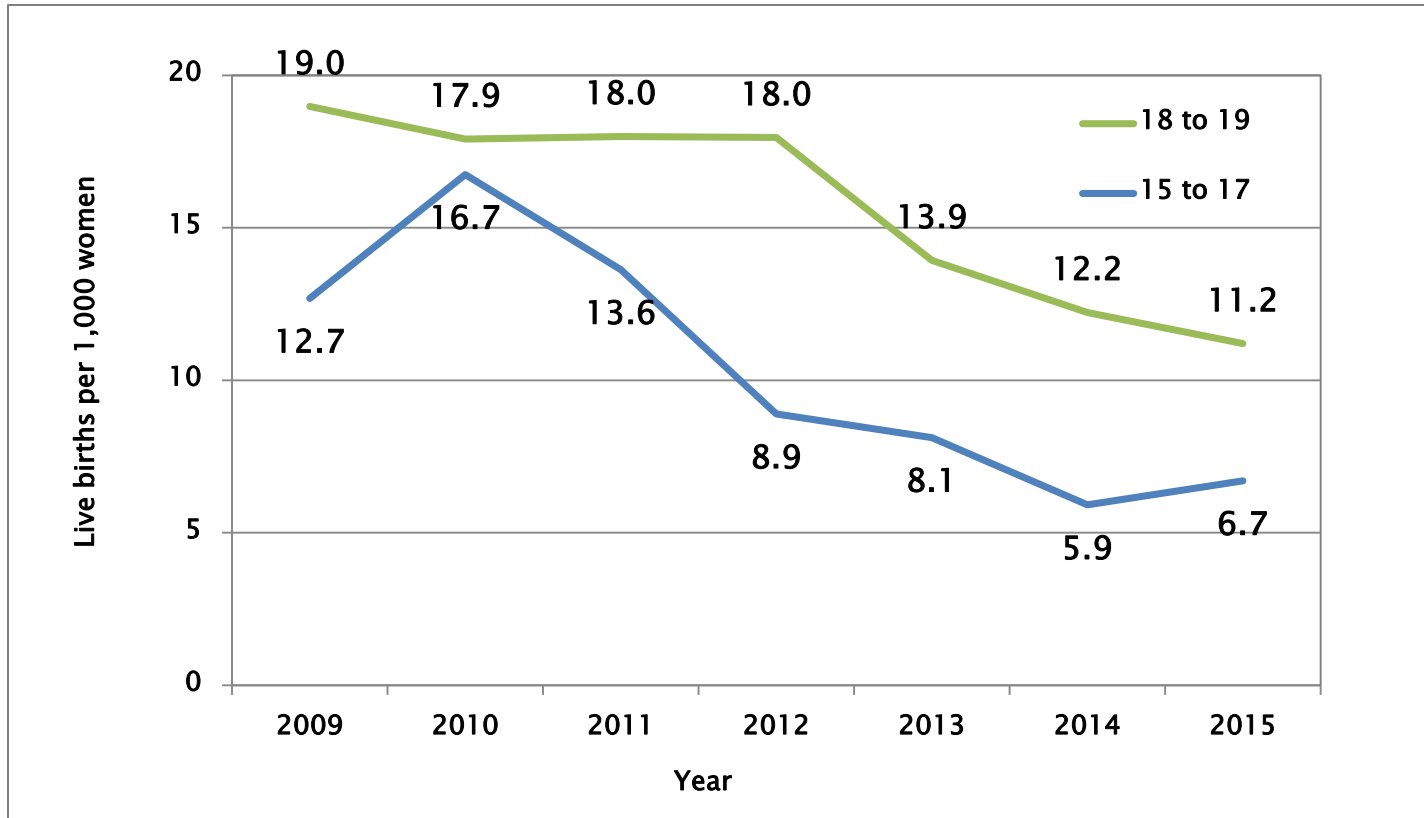
# Trends in Teen Birth Rates

White and Hispanic Teen Birth Rates in Yolo County and California, 2007–2015



Source: Yolo County MCAH Program, Vital Records

# Teen Birth Rates by Age Group, Yolo County, 2008-15



**The rate for 15- to 17-year-olds has dropped by 60% since 2010**  
**The rate for 18- to 19-year-olds has dropped by 40% since 2010**

Source: Yolo County MCAH Program, Vital Records

Thank You!

