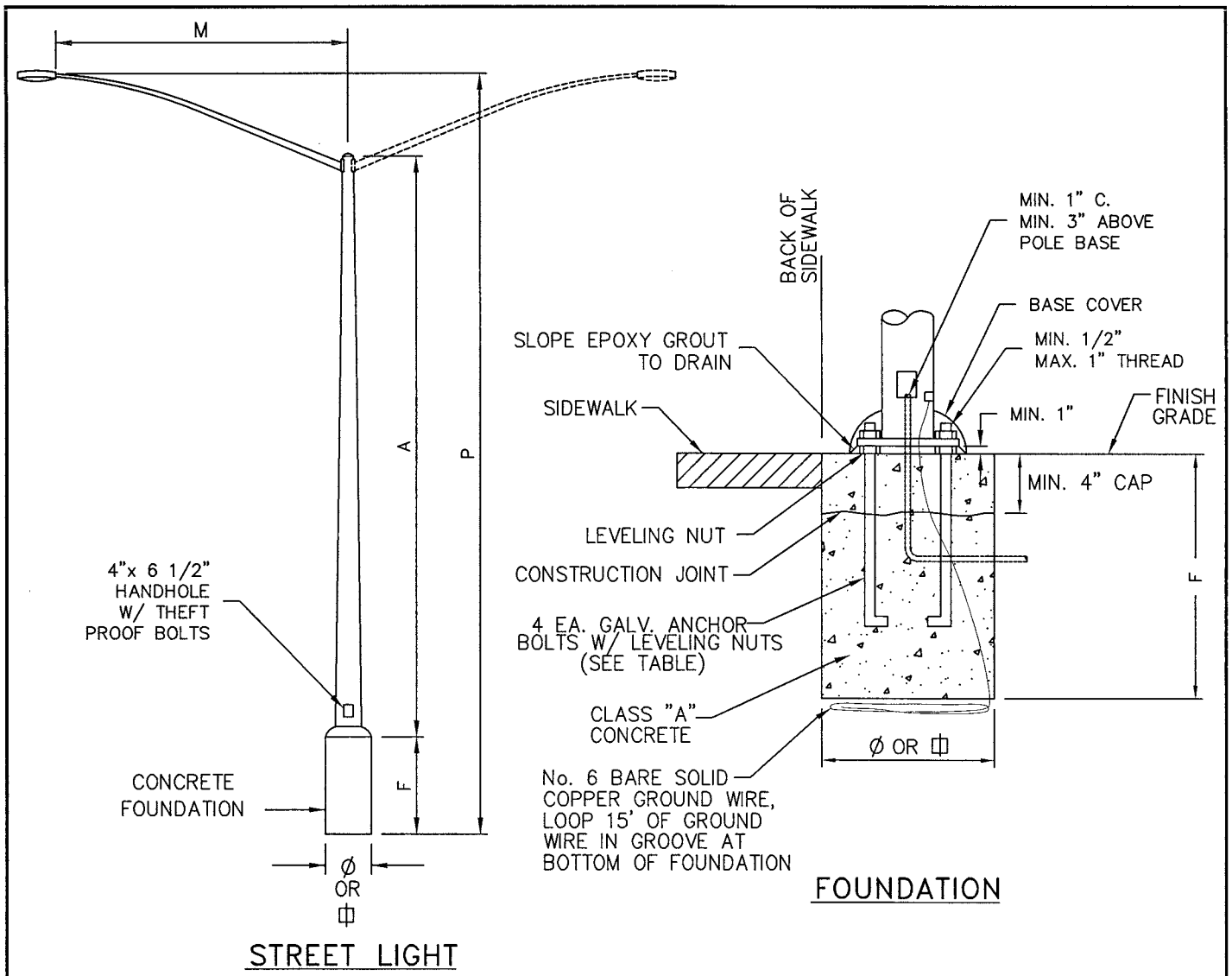


Standard Drawings		
Section 5 – Street Lighting and Telecommunications Details		
Drawing	Sheets	Description
5-1	1	Standard Street Light and Legend
5-2	1	Post Top Street Light
5-3	1	Typical Street Light Locations, Arterial Streets
5-4	1	Typical Street Light Locations, Collector and Residential Streets
5-5	1	Base Location for Street Light
5-6	1	Single Light Direct Service
5-7	1	Service Point Pull Box
5-8	1	Electric Service Pedestal
IT-1	1	Standard Cable Trench Sections
IT-2	1	Fiber Optics & Signal Interconnect Pull Boxes
IT-3	1	4' X 7' Vault Detail 1
IT-4	1	4' X 7' Vault Detail 2
IT-5	1	3' X 5' Vault Detail 1
IT-6	1	3' X 5' Vault Detail 2
IT-7	1	Fiber Optic Conduit Handhole Entry
IT-8	1	Typical Fiber Optic Conduit Sweep Detail



POLE DATA			ARM	FOUNDATION		ANCHOR BOLTS		
A HEIGHT	P MTG. HGT.	ACCEPTABLE PRODUCTS	M LENGTH	F DEPTH	Ø DIA	⊞ SQ	SIZE	BOLT CIRCLE
22'-6"	25'-0"	VALAMONT DS 50 5.9A220-6S OR APPROVED EQUIVALENT	6'	3'-4"	24"	20"	1" x 36" x 4"	9"
27'-6"	30'-0"	VALAMONT DS 50 6.6A270-6S OR APPROVED EQUIVALENT	6'	5'-0"	30"	27"	1" x 36" x 4"	9 1/2"

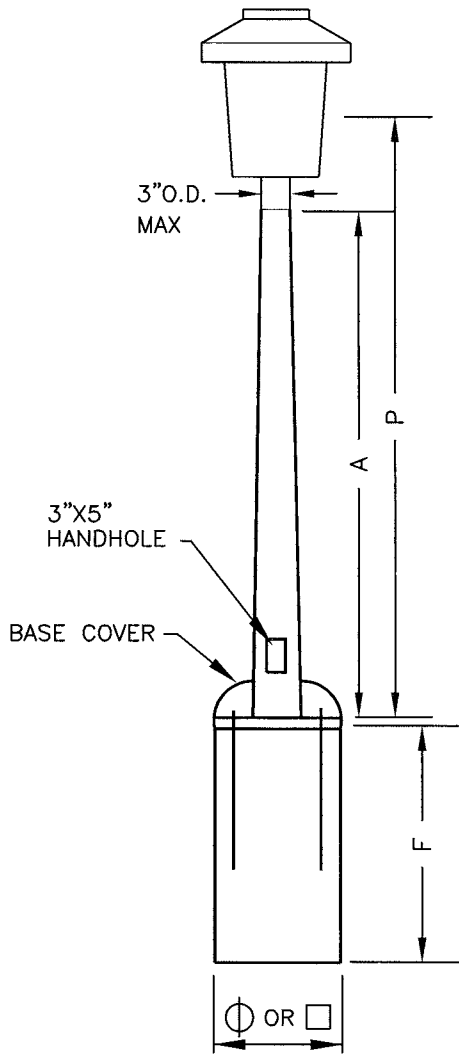
NOTES:

- PULL BOX SHALL BE INSTALLED ADJACENT TO POLE WITHIN 36". PULL BOX SHALL NOT BE LOCATED IN SIDEWALK WITHOUT PRIOR APPROVAL OF THE COUNTY ENGINEER.
- WHEN A SECONDARY PULL BOX IS LOCATED WITHIN 8' OF POLE, PULL BOX AT BASE OF STREETLIGHT IS NOT REQUIRED.
- COMPLY WITH ALL UTILITY REQUIREMENTS.
- STREET LIGHT NUMBERING SHALL BE AS REQUIRED BY PACIFIC GAS AND ELECTRIC (UTILITY).
- PROVIDE SHIELDS ON HOUSE SIDE.

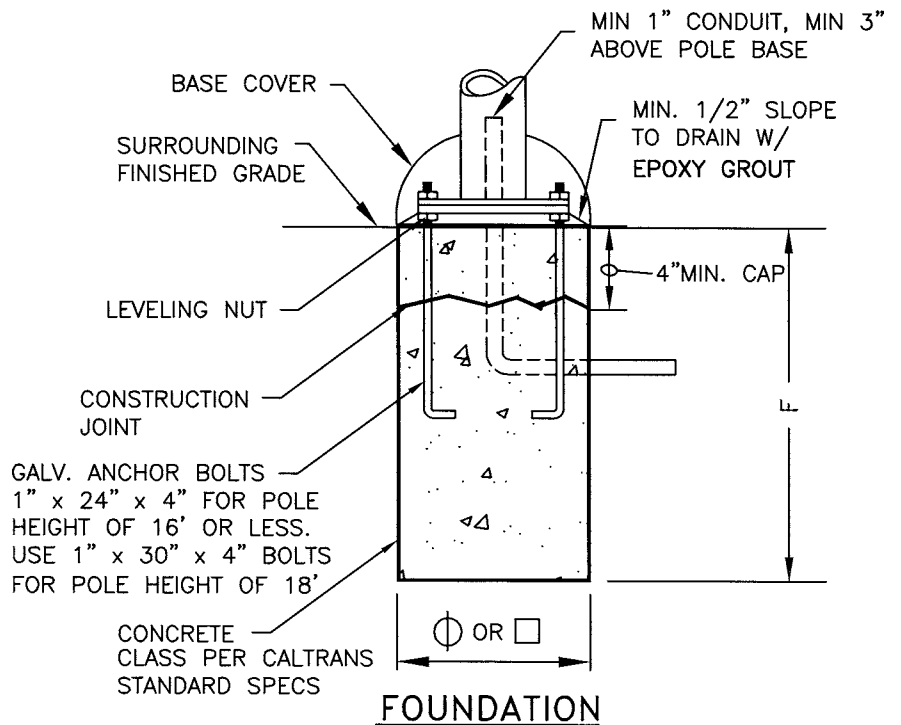
LEGEND

PROPOSED	EXISTING	
		STANDARD STREET LIGHT
		POST TOP
		PULLBOX
		CONDUIT
		SERVICE CAN
		U.G. UTILITY SERVICE PEDESTAL
		TRANSFORMER
		WOOD POLE

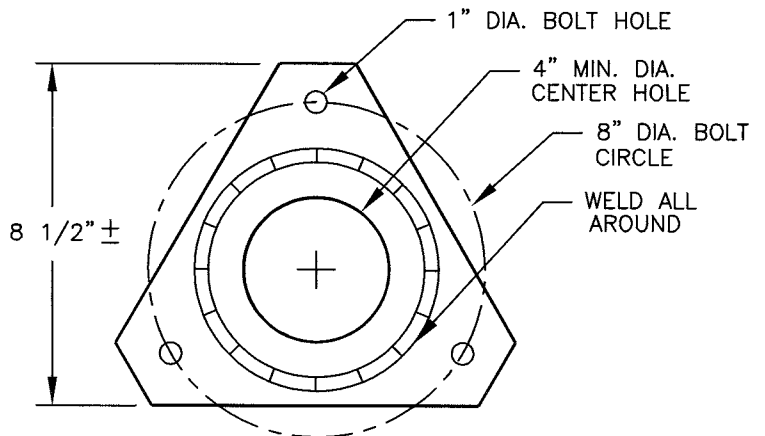
COUNTY OF YOLO		DATE: 08/05/08
PLANNING AND PUBLIC WORKS DEPARTMENT		SHEET # 1 OF 1
STANDARD STREET LIGHT AND LEGEND		DRAWING #: 5-1 NOT TO SCALE
 COUNTY ENGINEER No. C42401		28 AUG 08 APPROVAL DATE



POST TOP LIGHT



FOUNDATION



BASE

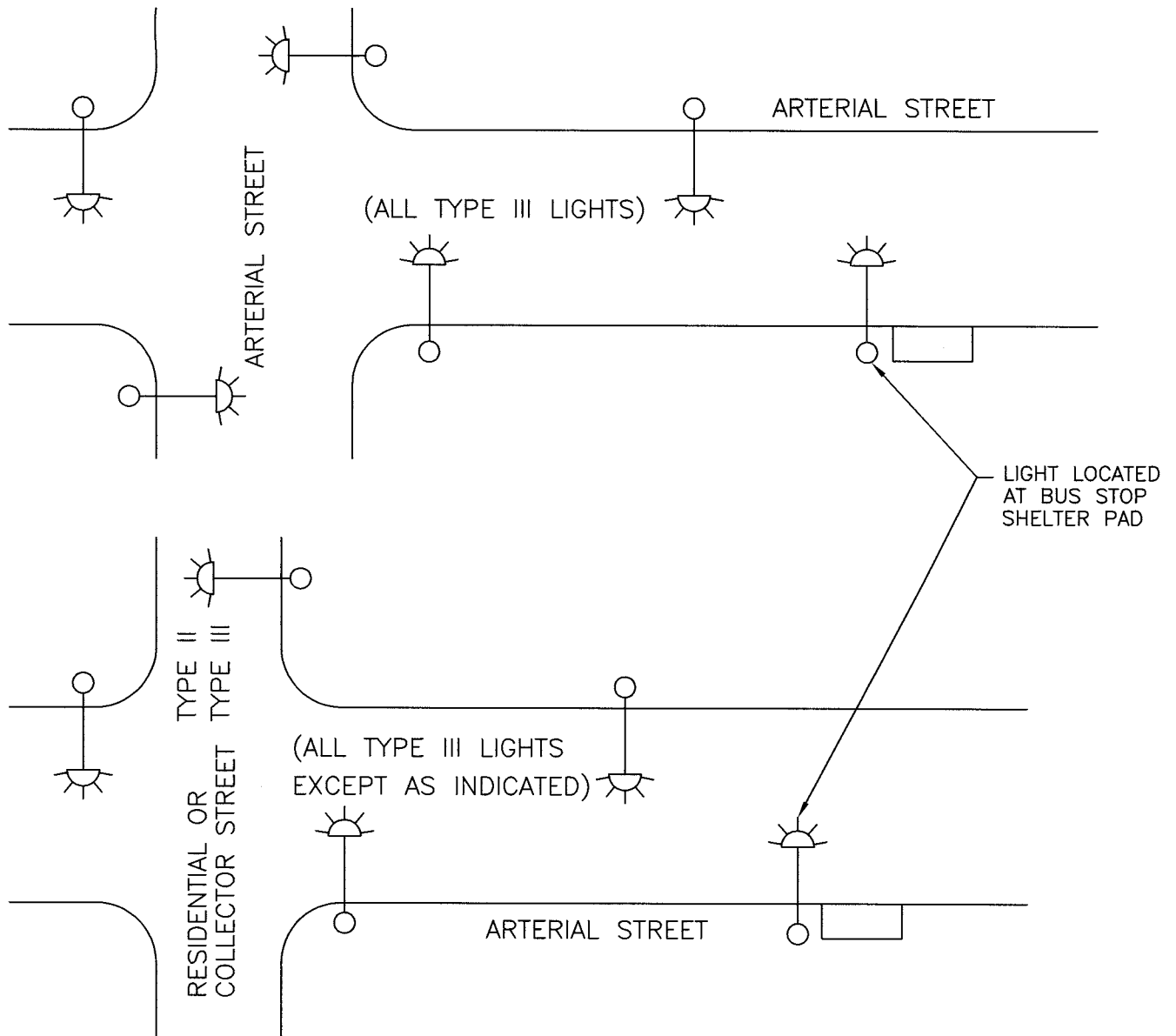
POLE DATA			FOUNDATION		
A HEIGHT	P MTG. HGT.	ACCEPTABLE PRODUCTS	F DEPTH	Ø DIA.	□ SQ.
12', 14', 16'	VARIABLES	UNION METAL DESIGN SERIES 201 AMERON SERIES PGF VALMONT SERIES DS 200 OR APPROVED EQUIVALENT	30"	27"	24"
18'	VARIABLES		36"	27"	24"

NOTES:

1. REFER TO UTILITY REQUIREMENTS FOR CONDUITS, WIRING AND GROUNDING.

COUNTY OF YOLO PLANNING AND PUBLIC WORKS DEPARTMENT		DATE: 08/05/08
POST TOP STREET LIGHT		SHEET # 1 OF 1
<i>Paros Kokkas</i> COUNTY ENGINEER No. C42401	28 AUG. 08 APPROVAL DATE	DRAWING #: 5-2 NOT TO SCALE

STREET LIGHT PLACEMENT ARTERIAL STREETS

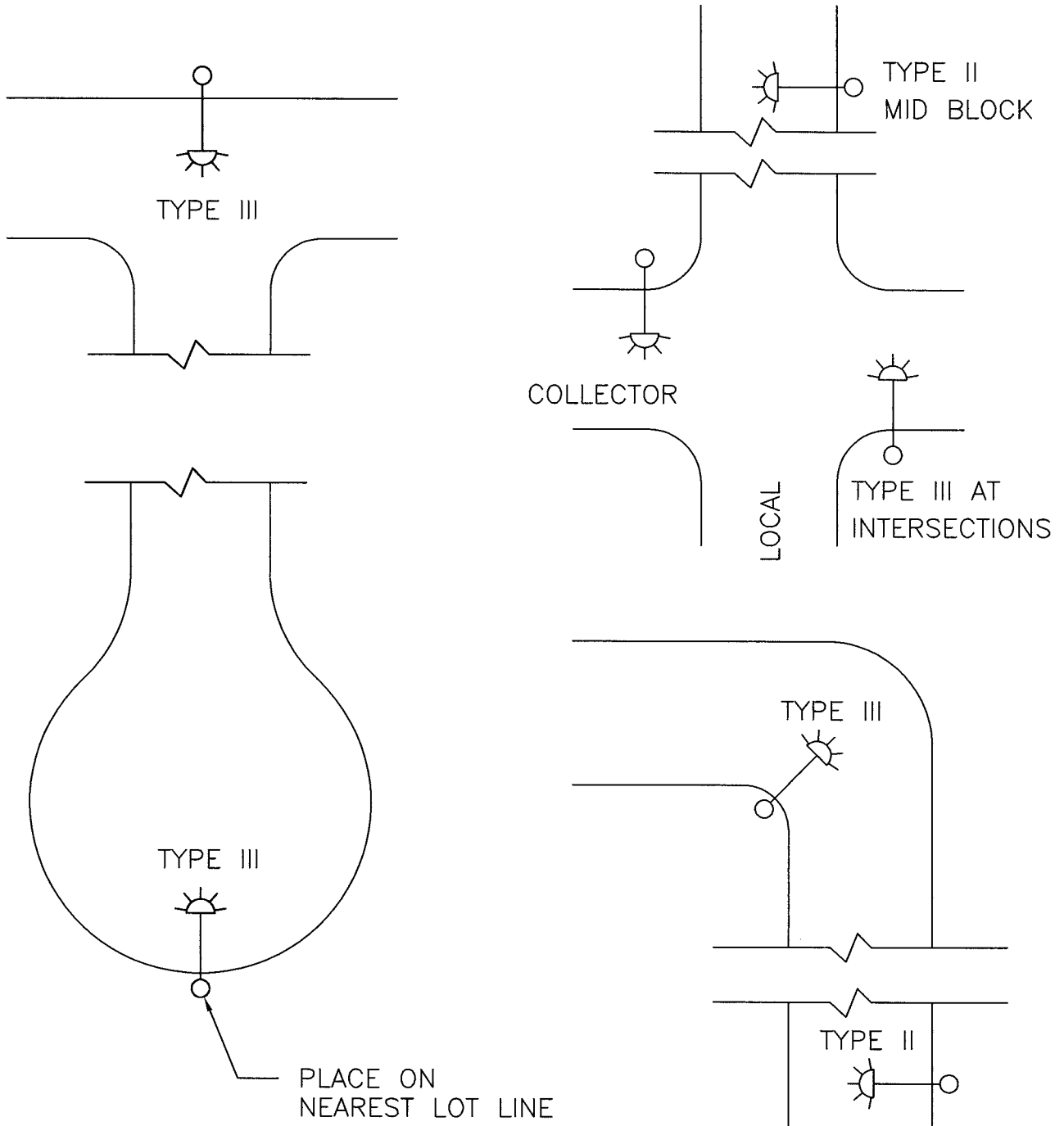


NOTE:

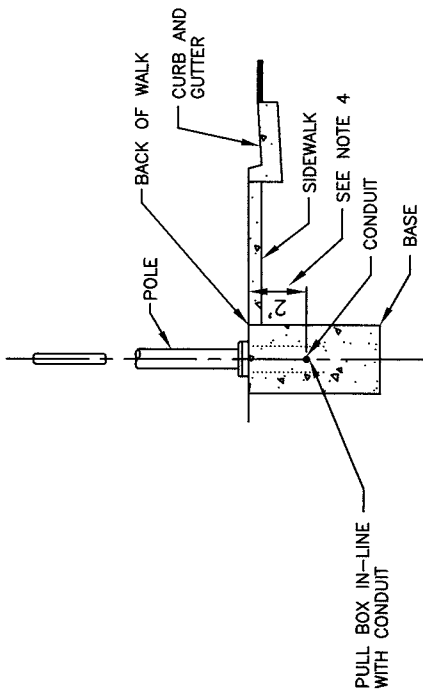
1. SEE SECTION 5-6 OF THE SPECIFICATIONS FOR STREET LIGHT SPACING.

COUNTY OF YOLO PLANNING AND PUBLIC WORKS DEPARTMENT		DATE: 08/05/08
TYPICAL STREET LIGHT LOCATIONS ARTERIAL STREETS		SHEET # 1 OF 1
<i>Paras Kallas</i> COUNTY ENGINEER No. C42401	28 AUG. 08 APPROVAL DATE	DRAWING #: 5-3 NOT TO SCALE

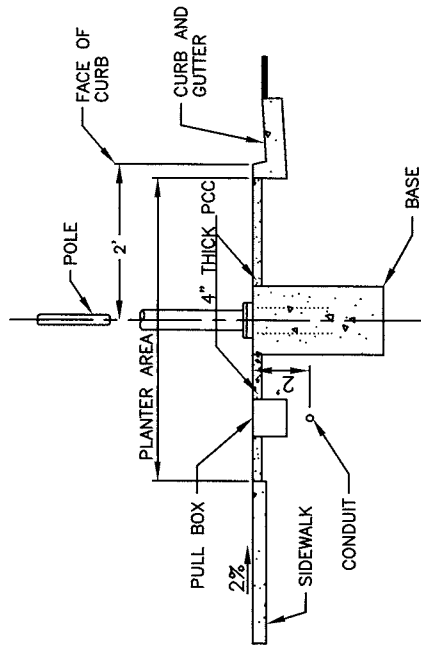
STREET LIGHT PLACEMENT ON COLLECTOR AND RESIDENTIAL STREETS



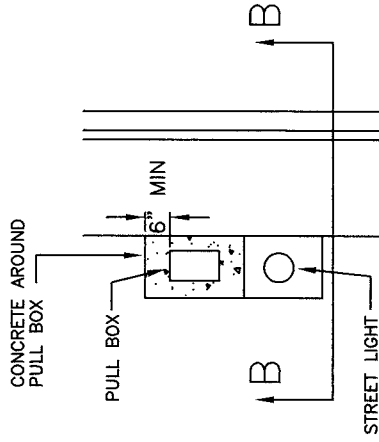
COUNTY OF YOLO		DATE:
PLANNING AND PUBLIC WORKS DEPARTMENT		08/05/08
TYPICAL STREET LIGHT LOCATIONS		SHEET #
COLLECTOR AND RESIDENTIAL STREETS		1 OF 1
<i>Paros Kalkas</i>	<i>28 AUG 08</i>	DRAWING #:
COUNTY ENGINEER No. C42401	APPROVAL DATE	5-4
		NOT TO SCALE



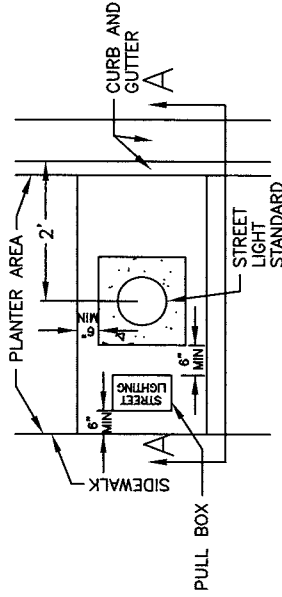
SECTION B-B



SECTION A-A



PLAN-STREET LIGHT AT CURB GUTTER AND SIDEWALK



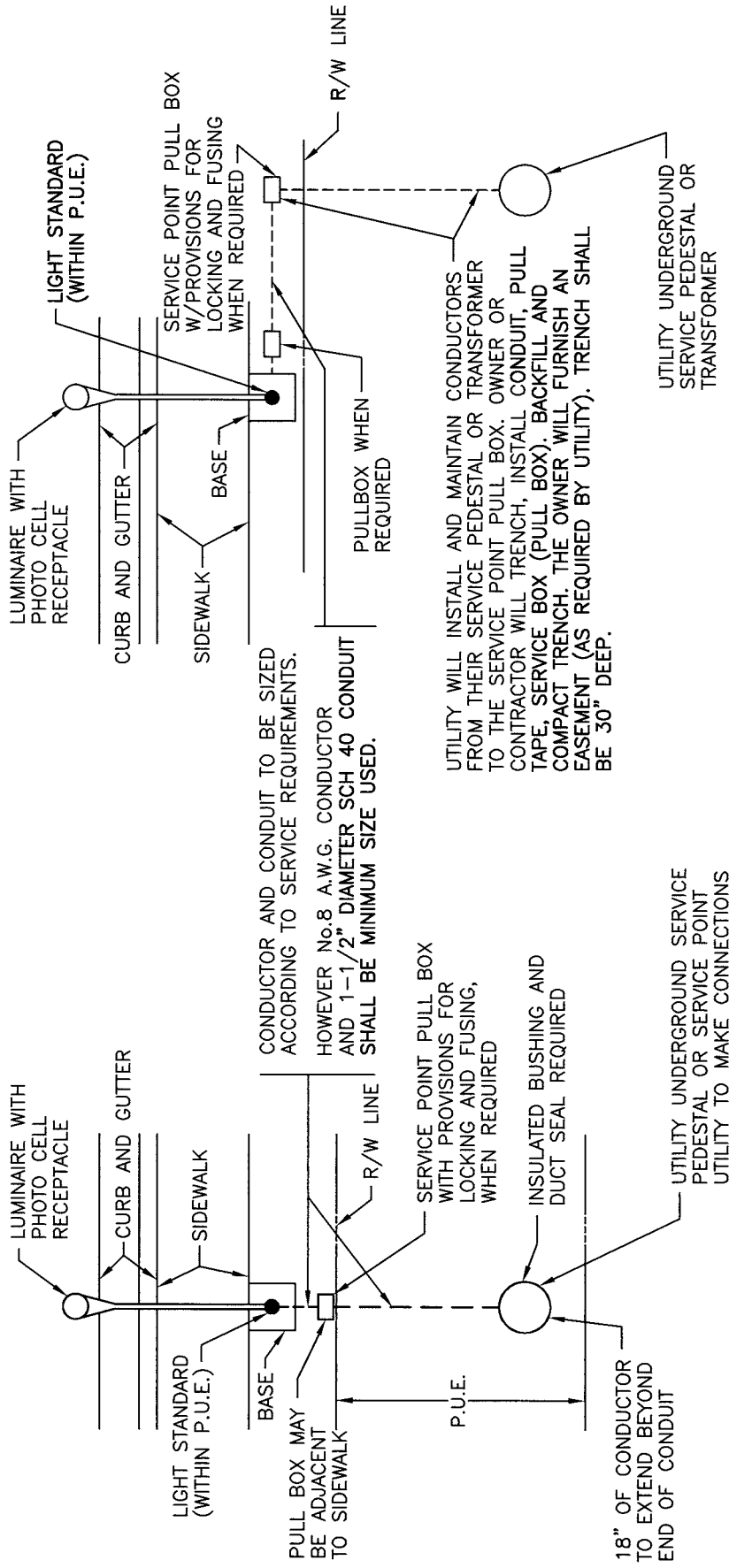
PLAN-STREET LIGHT AT PLANTER STRIP

NOTES:

1. CONDUIT TRENCH BACKFILL SHALL BE COMPACTED TO 95% RELATIVE COMPACTION.
2. LANDSCAPING GRADES IN THE AREA OF THE STREET LIGHT STANDARD WILL MATCH BASE ELEVATION. SEE SHEET 5-7 FOR STREET LIGHT SERVICE POINT PULL BOX DETAILS.
3. INSTALL RODENT SCREEN AT THE BOTTOM OF THE PULL BOX.
4. IF CONDUIT IS LOCATED BENEATH THE SIDEWALK, IT MAY BE PLACED AT 18" DEPTH INSTEAD OF 2'.
5. PULL BOX MAY BE OMITTED IF SERVICE PT IS WITHIN 50' OF LIGHT.
6. PRECAST BASES MAY BE USED, BUT MUST BE BACKFILLED WITH 2-SACK CONCRETE SLURRY VIBRATED INTO PLACE.
7. PROVIDE SHIELD ON HOUSE SIDE.

COUNTY OF YOLO PLANNING AND PUBLIC WORKS DEPARTMENT	DATE: 08/05/08
	SHEET # 1 OF 1
BASE LOCATION FOR STREET LIGHT	
COUNTY ENGINEER No. C42401 <i>Ranar Koppas</i>	DRAWING #: 5-5 APPROVAL DATE 28 Aug. 08

NOT TO SCALE



UTILITY WILL INSTALL AND MAINTAIN CONDUCTORS FROM THEIR SERVICE PEDESTAL OR TRANSFORMER TO THE SERVICE POINT PULL BOX. OWNER OR CONTRACTOR WILL TRENCH, INSTALL CONDUIT, PULL TAPE, SERVICE BOX (PULL BOX), BACKFILL AND COMPACT TRENCH. THE OWNER WILL FURNISH AN EASEMENT (AS REQUIRED BY UTILITY). TRENCH SHALL BE 30" DEEP.

UTILITY UNDERGROUND SERVICE PEDESTAL OR TRANSFORMER

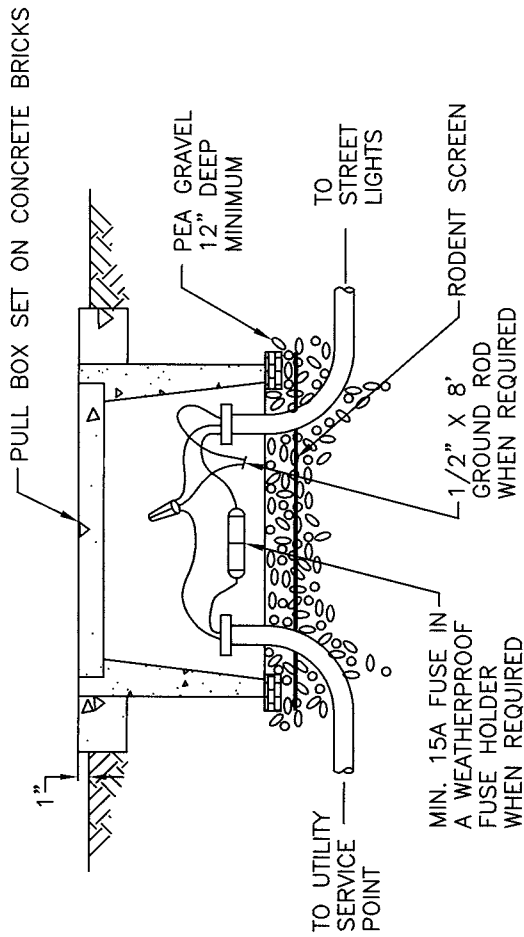
RESIDENTIAL SERVICE

COMMERCIAL SERVICE

NOTES:

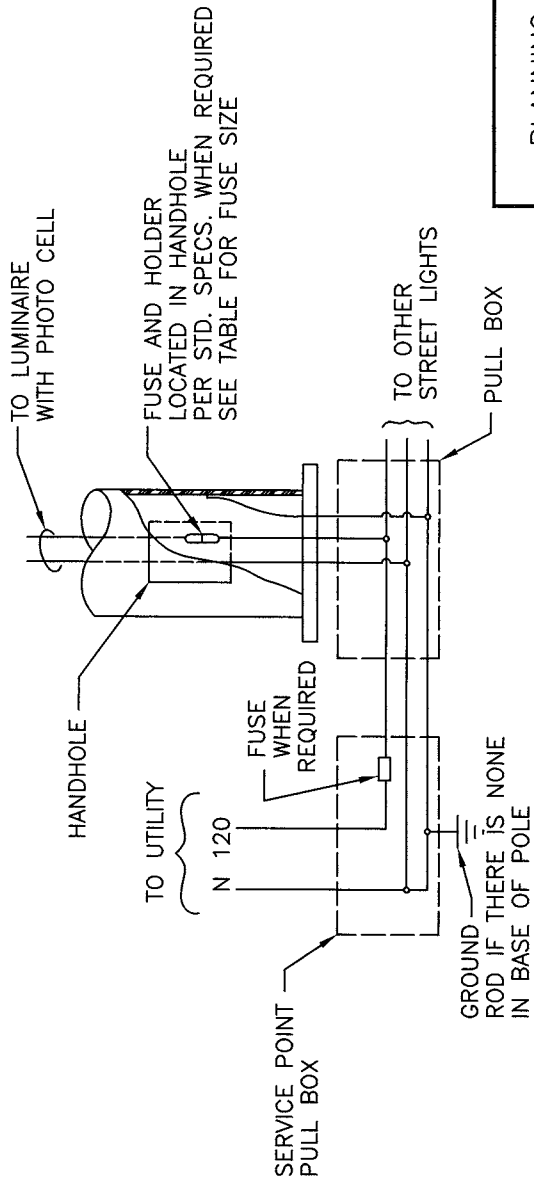
1. CONNECT NEUTRAL CONDUCTOR TO GROUNDING ELECTRODE IN SERVICE POINT PULL BOX.
2. ALL FACILITIES SHALL BE WITHIN RIGHT-OF-WAY OR PUBLIC UTILITY EASEMENT.
3. CONDUIT TO TERMINATE 2" BELOW BOTTOM OF HANDHOLE.
4. SEE SHEET 5-7 FOR STREET LIGHT SERVICE POINT PULL BOX DETAILS.

COUNTY OF YOLO PLANNING AND PUBLIC WORKS DEPARTMENT	DATE: 08/05/08
SINGLE LIGHT DIRECT SERVICE	SHEET # 1 OF 1
<i>James Walker</i> COUNTY ENGINEER No. C42401	DRAWING #: 5-6 NOT TO SCALE
<i>28 Aug. 08</i> APPROVAL DATE	



LAMP WATTAGE	FUSE SIZE
200 WATT OR LESS	6 AMP
250 WATT-400 WATT	10 AMP

SERVICE POINT PULL BOX DETAILS

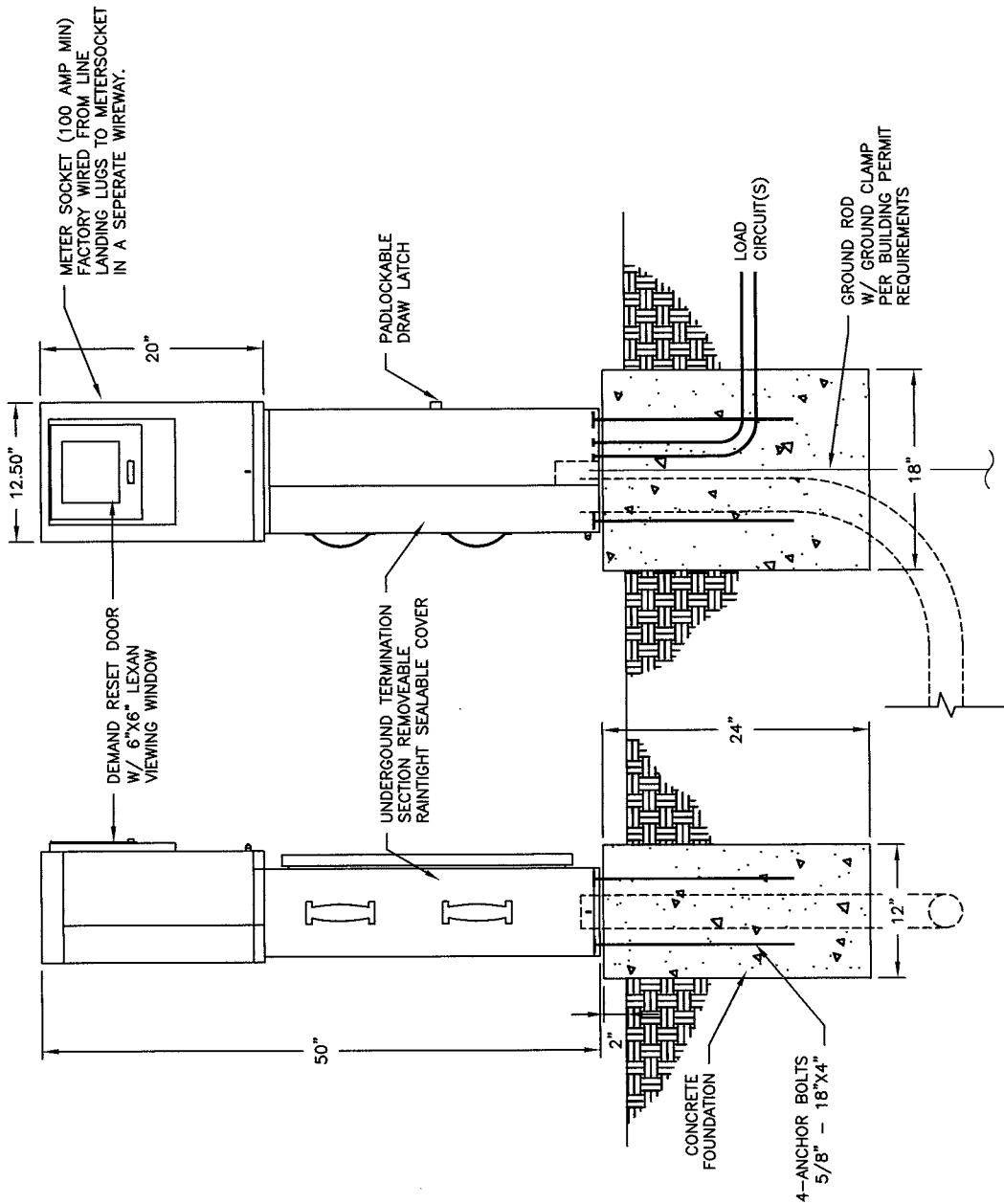


WIRING DIAGRAM

NOTES:

1. FUSE SHALL BE A MIDGET FERRULE TYPE, RATED AT 600 VOLTS.
2. ATTACH GROUND CONDUCTOR TO EACH ELECTROLIER.
3. ALL PULL BOXES SHALL HAVE PROVISIONS FOR LOCKING.
4. PULL BOXES SHALL NOT BE LOCATED IN DRAINAGE SWALES. PROVIDE POSITIVE DRAINAGE AWAY FROM ALL PULL BOXES.
5. INSTALL RODENT SCREEN BETWEEN PULL BOX AND PEA GRAVEL, JUST BENEATH BRICKS.
6. PULL BOXES AT JUNCTION BOXES SHALL BE LOCATED AT LEAST 20' FROM FIRE HYDRANTS.

COUNTY OF YOLO PLANNING AND PUBLIC WORKS DEPARTMENT	DATE: 08/05/08
SERVICE POINT PULL BOX	SHEET # 1 OF 1
<i>Panos</i> COUNTY ENGINEER No. C42401	DRAWING #: 5-7 NOT TO SCALE
<i>Wolke</i> APPROVAL DATE 28 AUG. 08	

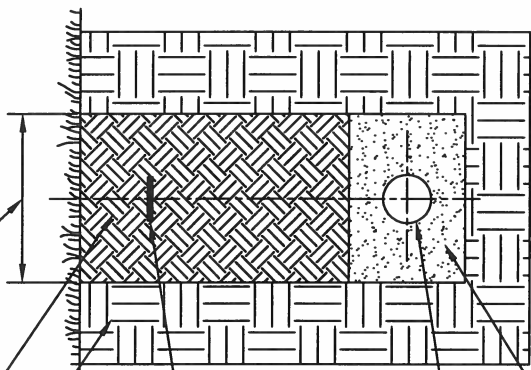


- NOTES:
- SERVICE PEDESTAL AND IRRIGATION CONTROLLER PANELS SHALL BE CONSISTENT WITH THIS DETAIL.
 - LOCATE PEDESTALS SO AS TO MINIMIZE THE POSSIBILITY OF DAMAGE FROM ERRANT VEHICLES OR LANDSCAPE CONTRACTORS.
 - SERVICE PANEL SHALL MEET UTILITY AND EUSERC REQUIREMENTS.
 - DEVELOPER SHALL OBTAIN COUNTY BUILDING PERMIT AS REQUIRED TO INSTALL SERVICE PEDESTAL.
 - PROVIDE 15A GFCI RECEPTICLE INSIDE PEDESTAL.
 - CABINET SHALL BE FABRICATED FROM 304D STAINLESS STEEL.
 - TESCO MODEL 26-000 OR EQUIVALENT.

COUNTY OF YOLO PLANNING AND PUBLIC WORKS DEPARTMENT	DATE: 08/05/08
ELECTRIC SERVICE PANEL	SHEET # 1 OF 1
<i>Panos Koblas</i> COUNTY ENGINEER No. C42401	DRAWING #: 5-8 NOT TO SCALE
28 Aug. 08 APPROVAL DATE	

TRENCH WIDTH AS REQUIRED BY EXISTING CONDITIONS AND SPECIFICATIONS

CLEAN FILL TO 95% COMPACTION EXISTING SOILS



WARNING TAPE (SEE REQUIREMENTS IN SPECIFICATIONS)

36" MINIMUM

TELECOMMUNICATIONS CONDUIT AS REQUIRED BY CONSTRUCTION DOCUMENTS AND SPECIFICATIONS

COMPACTED SAND 2" MINIMUM ALL AROUND CONDUITS

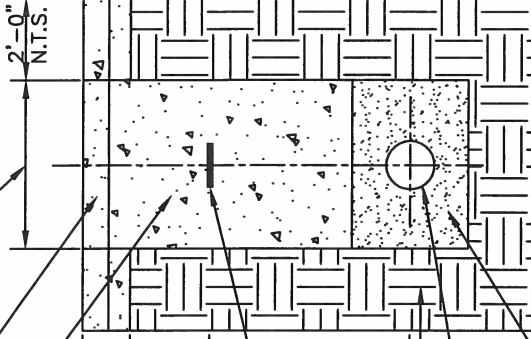
(A) EXISTING SOILS

LIP OF GUTTER ON THE NORTH SIDE

TRENCH WIDTH AS REQUIRED BY EXISTING CONDITIONS AND SPECIFICATIONS

2" MINIMUM THICK A.C. OR MATCH EXISTING

* TWO SACK CONCRETE SLURRY BACKFILL



12" MIN.

* 36" MINIMUM

WARNING TAPE (SEE REQUIREMENTS IN SPECIFICATIONS)

EXISTING SOILS

TELECOMMUNICATIONS CONDUIT AS REQUIRED BY CONSTRUCTION DOCUMENTS AND SPECIFICATIONS

COMPACTED SAND 2" MINIMUM ALL AROUND CONDUITS

(B) EXISTING PAVEMENT

* NOTE: WHEN IN A PUBLIC RIGHT OF WAY THIS ITEM SHALL CONFORM TO THE REQUIREMENTS OF THE PUBLIC WORKS DEPARTMENT HAVING JURISDICTION

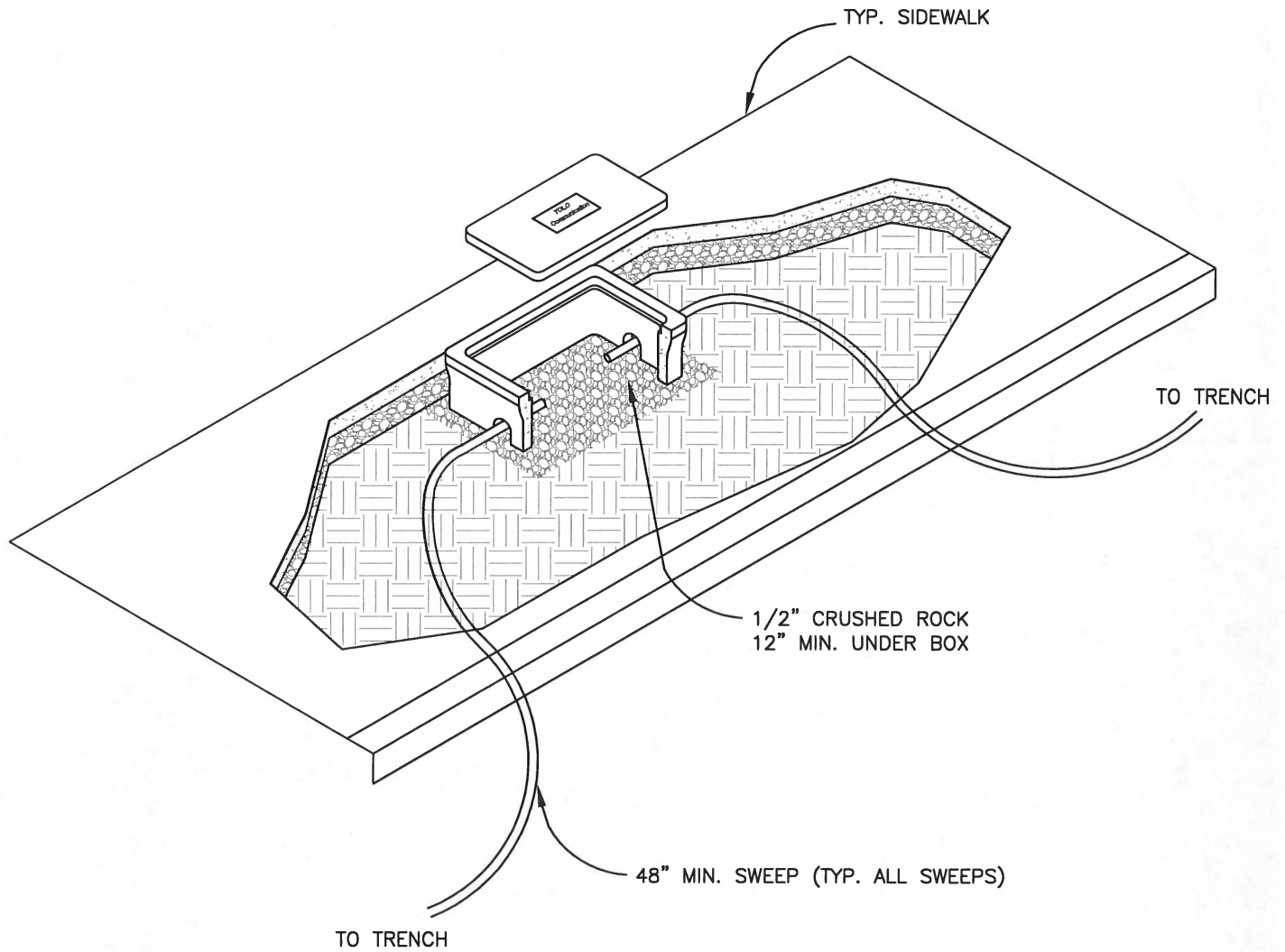
STANDARD CABLE TRENCH SECTIONS

COUNTY OF YOLO
 GENERAL SERVICES INFORMATION TECHNOLOGY
 TELECOMMUNICATIONS DIVISION
 120 W. MAIN ST. SUITE D
 WOODLAND CA. 95695

DATE: 03/26/14

SHEET # 1 OF 1

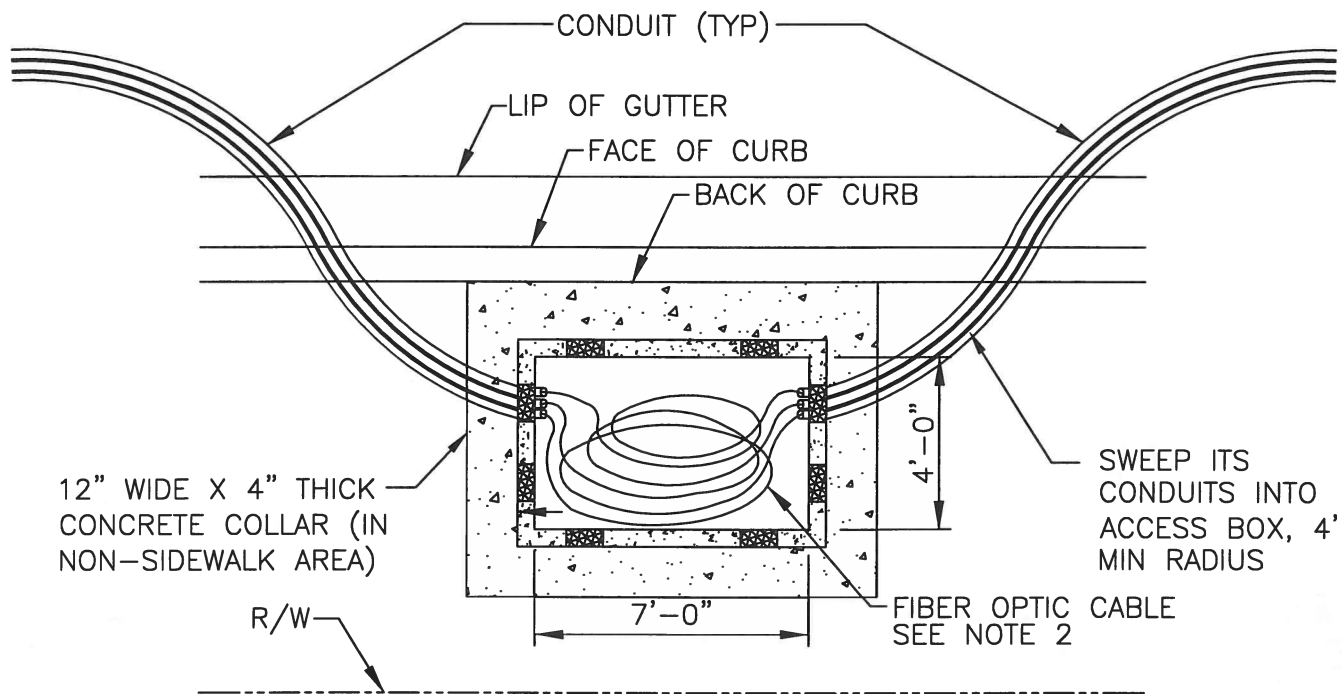
DRAWING #: IT-1
 NOT TO SCALE



NOTES:

1. INTERCONNECT PULL BOXES TO BE SPACED PER SPECIFICATIONS.
2. INLINE PULL BOXES IN NON-TRAFFIC AREAS TO BE CHRISTY PTS1730 OR APPROVED EQUAL.
 INLINE PULL BOXES IN TRAFFIC AREAS TO BE CHRISTY B1730 OR APPROVED EQUAL.
3. PULL BOXES AT JUNCTIONS IN NON-TRAFFIC AREAS TO BE CHRISTY PTS3048 OR APPROVED EQUAL.
 PULL BOXES AT JUNCTIONS IN TRAFFIC AREAS TO BE CHRISTY B30" X 48" OR APPROVED EQUAL.
4. PULL BOXES MUST MEET CALTRANS SPECIFICATIONS FOR TRAFFIC AND NON-TRAFFIC AREAS.
5. TOP OF PULL BOX TO BE SET AT EXISTING GRADE.
6. PULL BOX SHALL HAVE BOLT DOWN LID STAMPED YOLO COMMUNICATIONS.
7. CONDUIT SHALL BE 2" DIA.
8. CONDUIT SWEEPS SHALL BE A MIN. OF 48"

FIBER OPTICS & SIGNAL INTERCONNECT PULL BOXES COUNTY OF YOLO GENERAL SERVICES INFORMATION TECHNOLOGY TELECOMMUNICATIONS DIVISION 120 W. MAIN ST. SUITE D WOODLAND CA. 95695	DATE: 03/26/14
	SHEET # 1 OF 1
	DRAWING #: IT-2 NOT TO SCALE

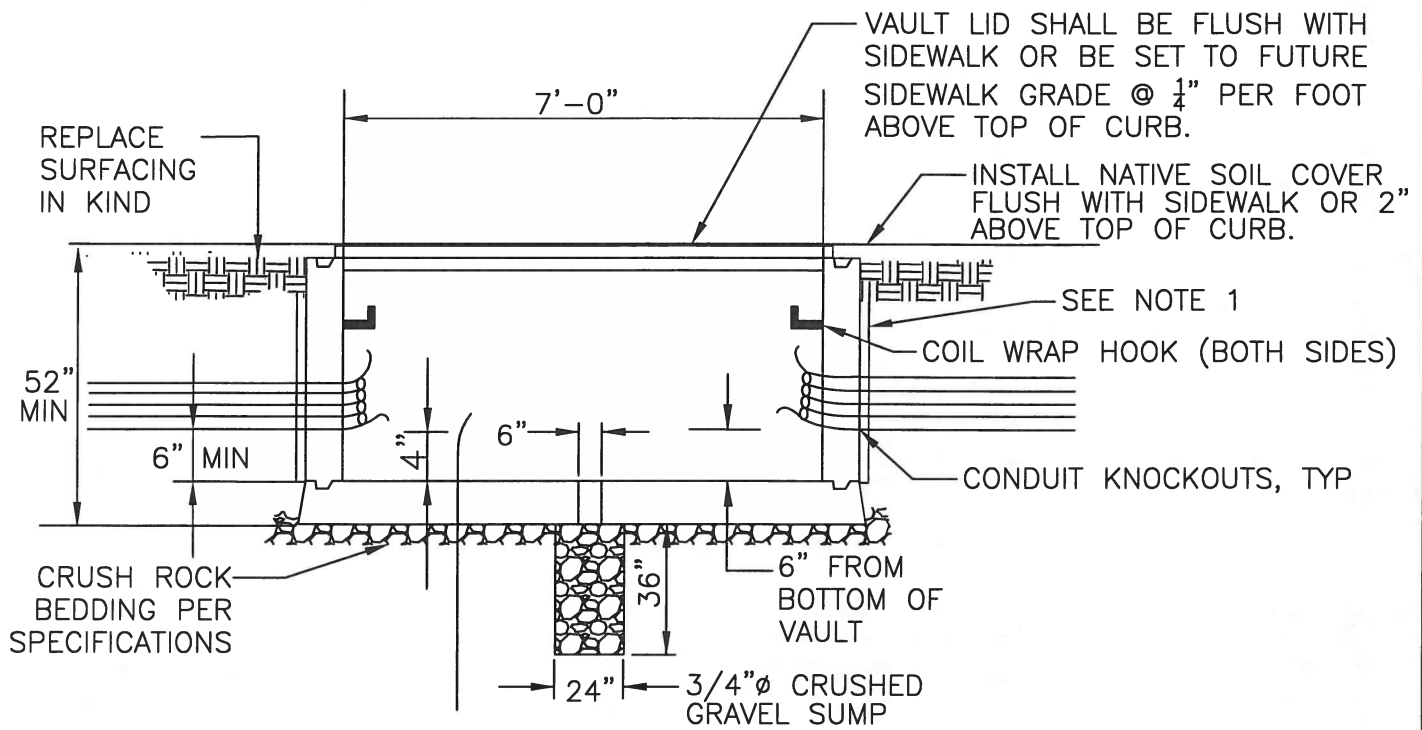


PLAN VIEW

NOTES:

1. TOP THREE CONDUITS NOT SHOWN FOR CLARITY.
2. COIL APPROXIMATELY 50 FEET MIN. OF FIBER OPTIC CABLE AROUND INSIDE BASE OF COMMUNICATIONS VAULT VERTICALLY WITH A MINIMUM DIAMETER OF 32". (ATTACH TO HOLD DOWNS WITH TIE WRAPS) PER SPECIFICATIONS.
3. 90° CONDUIT ENTRIES ARE NOT ALLOWED. CONDUIT SHALL BE DIRECTLY ACROSS FROM ADJACENT CONDUITS.
4. LABEL ALL CABLE IN PULL BOX & SERVICE BOX.
5. VAULT SHALL HAVE A TORSION SUSPENDED & SPRING LOADED LID WITH TWO HOLDUP BRACING BARS.
6. VAULTS SHALL INCLUDE BOLT DOWN LIDS.
7. LABELING ON LID SHALL READ "YOLO COMMUNICATIONS".
8. VAULTS SHALL BE AS REQUIRED BY CONSTRUCTION DOCUMENTS AND SPECIFICATIONS.
9. FOR ADDITIONAL 4' X 7' VAULT DETAILS, SEE STD PLAN IT-4.

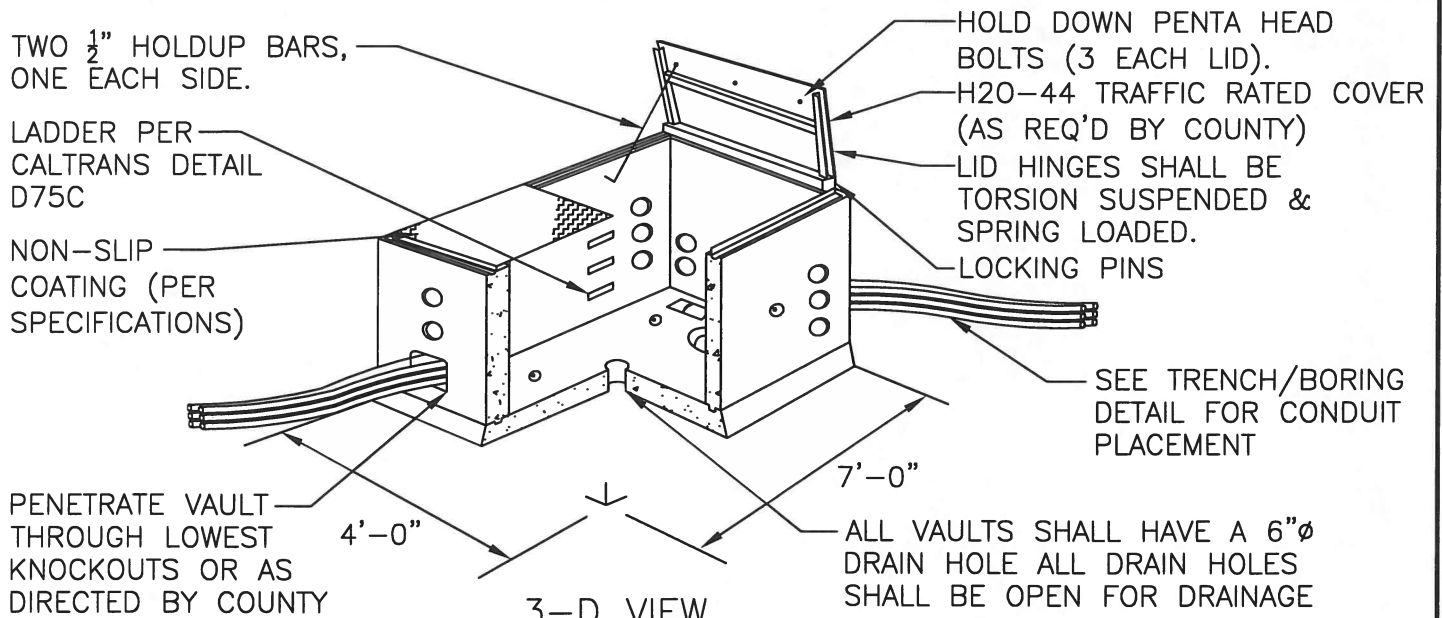
4' X 7' VAULT DETAIL 1	DATE: 03/26/14
COUNTY OF YOLO GENERAL SERVICES INFORMATION TECHNOLOGY TELECOMMUNICATIONS DIVISION 120 W. MAIN ST. SUITE D WOODLAND CA. 95695	SHEET # 1 OF 1
	DRAWING #: IT-3 NOT TO SCALE



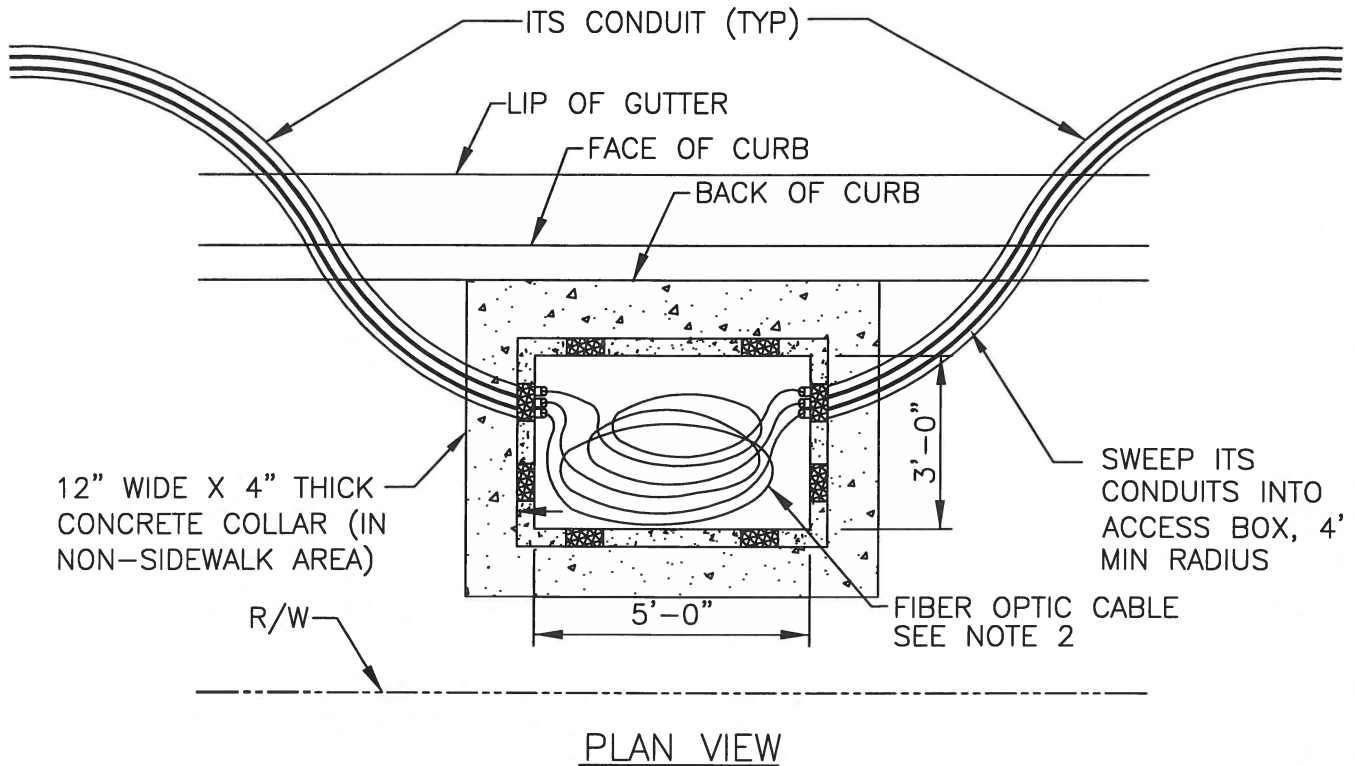
ELEVATION VIEW

NOTES:

1. WRAP VAULT WITH BUILDING PAPER PER SPECIFICATIONS BEFORE BACKFILLING.



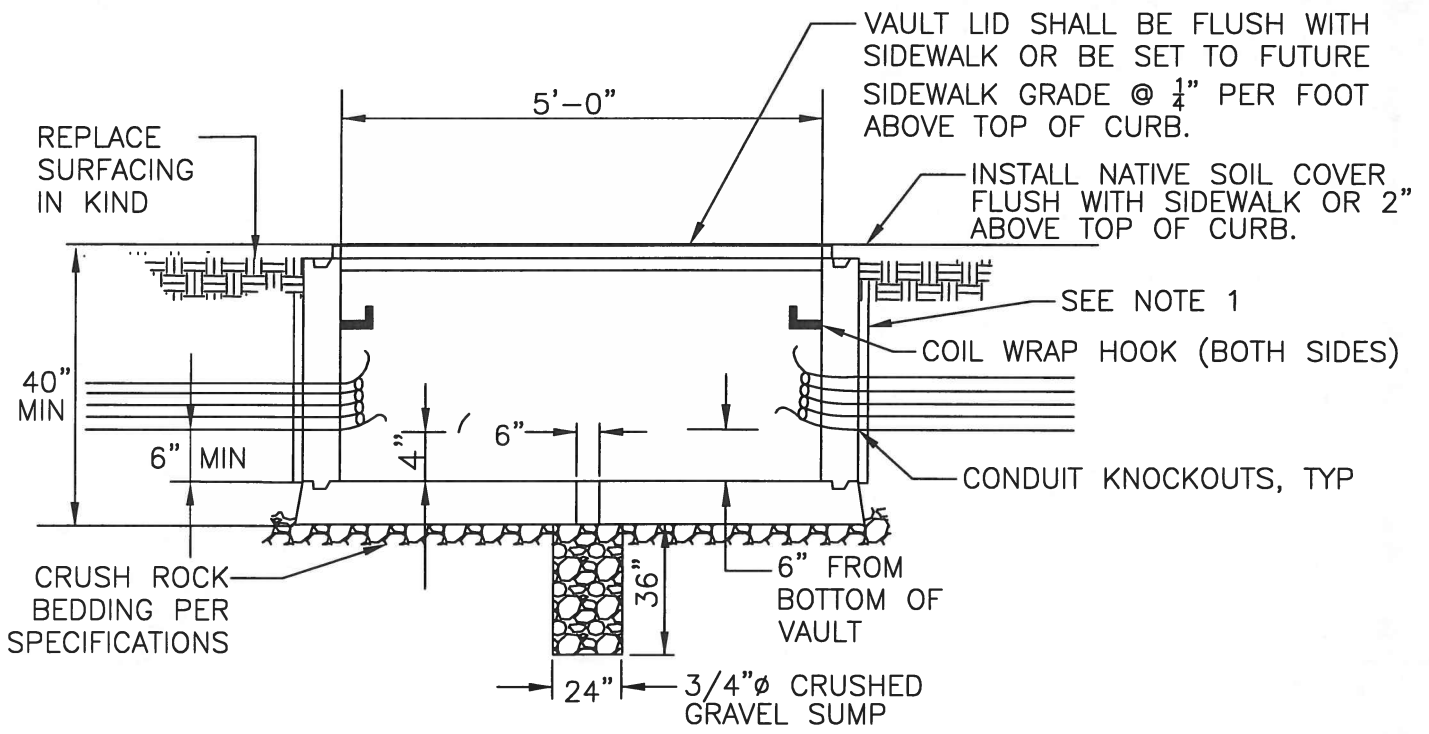
4' X 7' VAULT DETAIL 2	DATE: 03/26/14
COUNTY OF YOLO GENERAL SERVICES INFORMATION TECHNOLOGY TELECOMMUNICATIONS DIVISION 120 W. MAIN ST. SUITE D WOODLAND CA. 95695	SHEET # 1 OF 1
	DRAWING #: IT-4 NOT TO SCALE



NOTES:

1. TOP THREE CONDUITS NOT SHOWN FOR CLARITY.
2. COIL APPROXIMATELY 50 FEET MIN. OF FIBER OPTIC CABLE AROUND INSIDE BASE OF COMMUNICATIONS VAULT VERTICALLY WITH A MINIMUM DIAMETER OF 32". (ATTACH TO HOLD DOWNS WITH TIE WRAPS) PER SPECIFICATIONS.
3. 90° CONDUIT ENTRIES ARE NOT ALLOWED. CONDUIT SHALL BE DIRECTLY ACROSS FROM ADJACENT CONDUITS.
4. LABEL ALL CABLE IN PULL BOX & SERVICE BOX.
5. VAULT SHALL HAVE A TORSION SUSPENDED & SPRING LOADED LID WITH TWO HOLDUP BRACING BARS.
6. VAULTS SHALL INCLUDE BOLT DOWN LIDS.
7. LABELING ON LID SHALL READ "YOLO COMMUNICATIONS".
8. VAULTS SHALL BE AS REQUIRED BY CONSTRUCTION DOCUMENTS AND SPECIFICATIONS.
9. FOR ADDITIONAL 3' X 5' VAULT DETAILS, SEE STD PLAN IT-6.

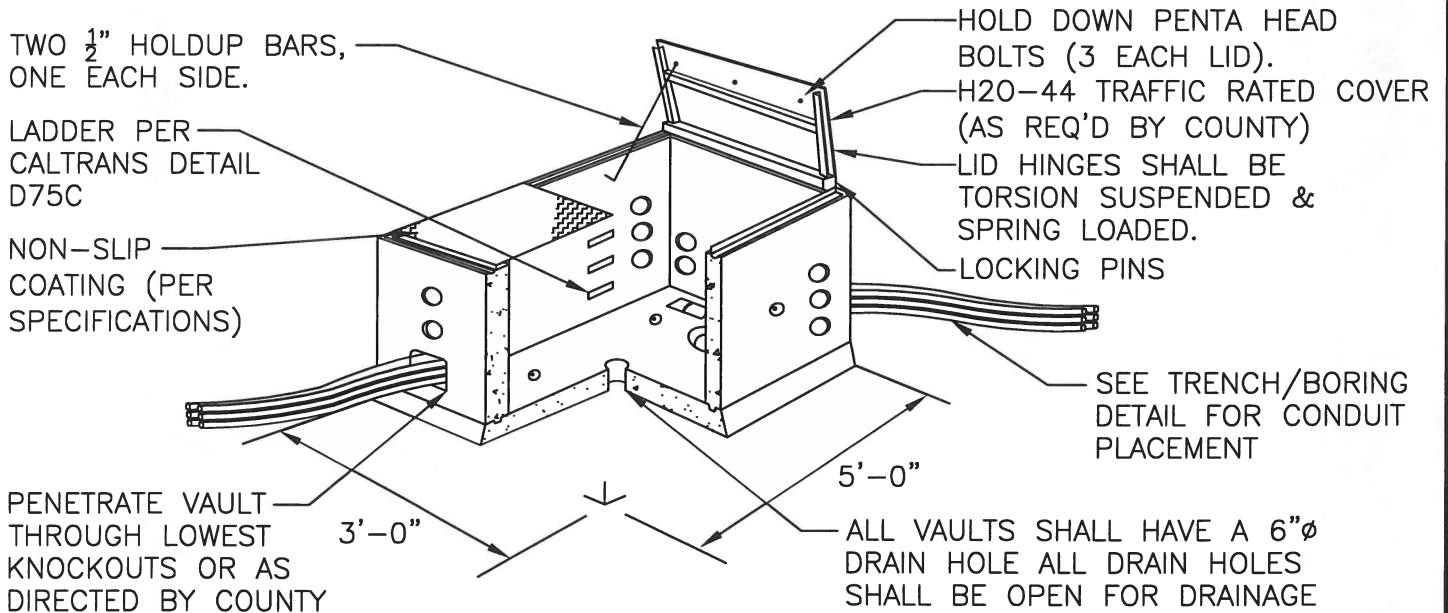
3' X 5' VAULT DETAIL 1	DATE: 03/26/14
COUNTY OF YOLO GENERAL SERVICES INFORMATION TECHNOLOGY TELECOMMUNICATIONS DIVISION 120 W. MAIN ST. SUITE D WOODLAND CA. 95695	SHEET # 1 OF 1
	DRAWING #: IT-5 NOT TO SCALE



ELEVATION VIEW

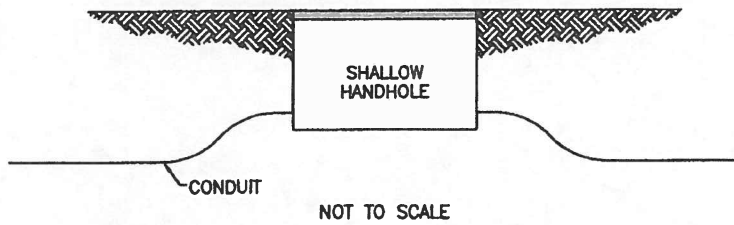
NOTES:

1. WRAP VAULT WITH BUILDING PAPER PER SPECIFICATIONS BEFORE BACKFILLING.



3-D VIEW

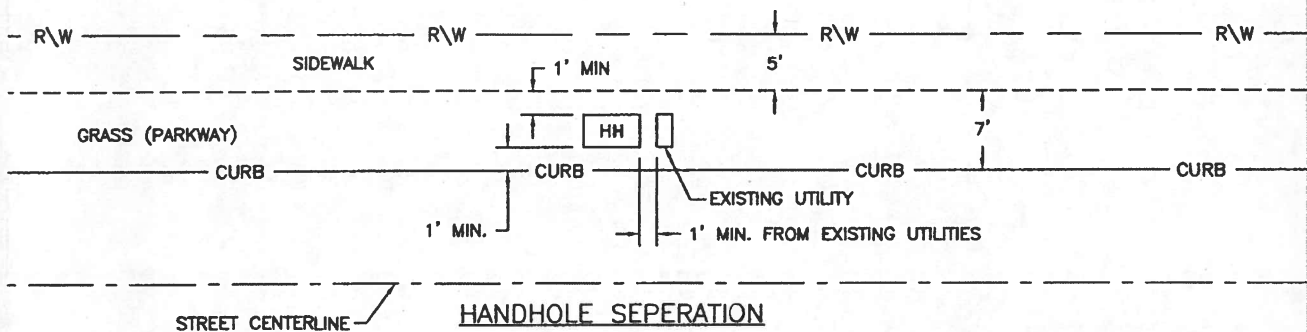
3' X 5' VAULT DETAIL 2	DATE: 03/26/14
COUNTY OF YOLO GENERAL SERVICES INFORMATION TECHNOLOGY TELECOMMUNICATIONS DIVISION 120 W. MAIN ST. SUITE D WOODLAND CA. 95695	SHEET # 1 OF 1
	DRAWING #: IT-6 NOT TO SCALE



TYPICAL CONDUIT HANDHOLE ENTRY

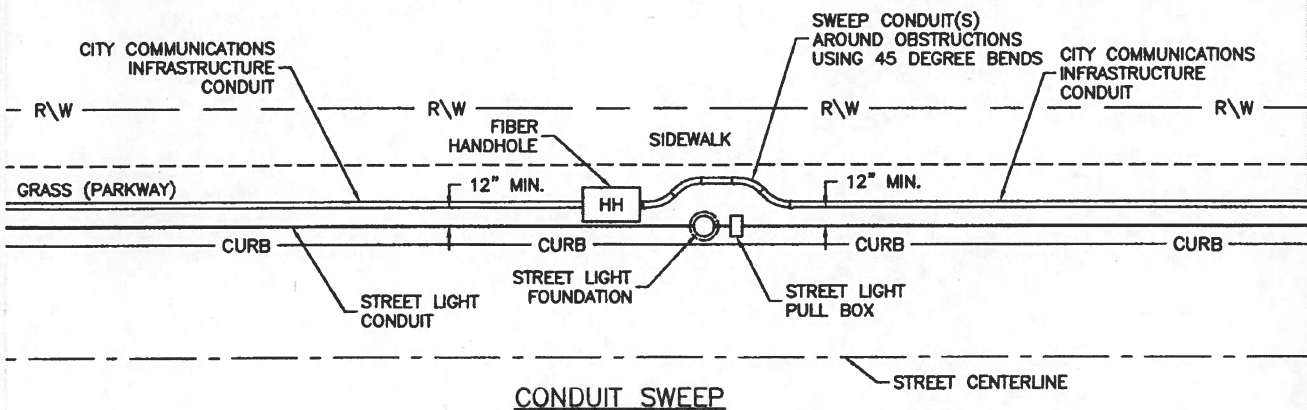
NOTES:

1. CONDUIT THAT SWEEPS INTO THE HANDHOLE MUST ENTER THE HANDHOLE FLUSH AND LEVEL TO AVOID FIBER MICRO BENDING. WHEN ENTERING A SHALLOW BOX, THE CHANGE IN THE ELEVATION OF THE CONDUIT RUN SHOULD BE KEPT AS SHORT AS POSSIBLE IN ORDER TO MAINTAIN MAXIMUM DEPTH.
2. CONDUIT BENDS CANNOT EXCEED 45 DEGREES IN OR OUT OF HANDHOLE.



HANDHOLE SEPERATION

NOTE: HANDHOLES SHOULD NOT BE PLACED IN SIDEWALK UNLESS APPROVED BY CITY ENGINEER



CONDUIT SWEEP

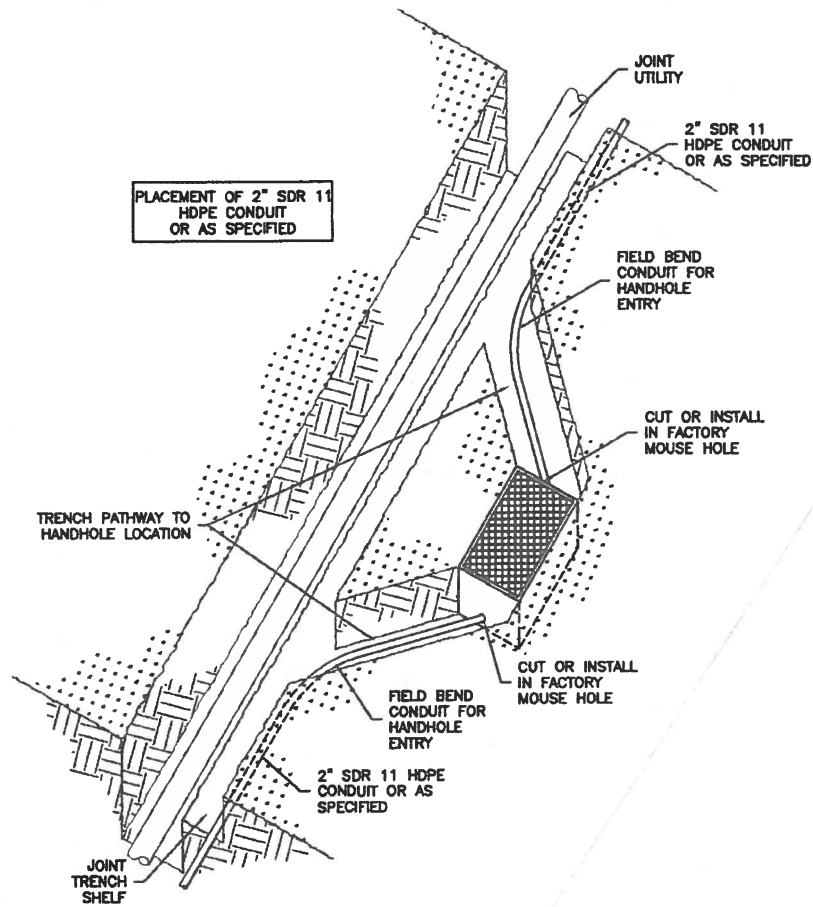
FIBER OPTIC CONDUIT HANDHOLE ENTRY

COUNTY OF YOLO
 GENERAL SERVICES INFORMATION TECHNOLOGY
 TELECOMMUNICATIONS DIVISION
 120 W. MAIN ST. SUITE D
 WOODLAND CA. 95695

DATE:
03/26/14

SHEET #
1 of 1

DRAWING #:
IT-7
NOT TO SCALE



- NOTE:
1. HANDHOLE SPACING
NOT TO EXCEED 500'
MAXIMUM LINEAR DISTANCE
 2. MINIMUM ALLOWABLE BEND
RADIUS FOR 2" SDR 11
HDPE IS 25 TIMES THE
OUTSIDE DIAMETER OF
CONDUIT

TYPICAL FIBER OPTIC CONDUIT SWEEP DETAIL		DATE: 03/26/14
COUNTY OF YOLO		SHEET # 1 OF 1
GENERAL SERVICES INFORMATION TECHNOLOGY TELECOMMUNICATIONS DIVISION 120 W. MAIN ST. SUITE D WOODLAND CA. 95695		DRAWING #: IT-8 NOT TO SCALE