

County Road 98  
Bike and Safety Improvement Project, Phase 2



**County Road 98 Corridor (Solano County to South of Road 29 )**

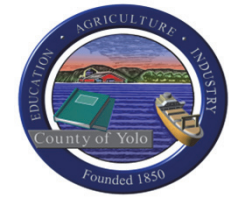
**Comment**

**Location**

- 1 Remember every summer there are potentially dozens of brand new tomato truck drivers. Problem with roundabouts and cyclists.
- 2 Post signs warning bikes that road narrows at creek, X miles down. Solano County won't have shoulder.
- 3 Cars turning onto/from Hutchison face very high speed traffic
- 4 High north-south vehicle speeds. Unprotected left turn when headed south towards Hutchison.
- 5 I prefer roundabouts to calm traffic and for safety reasons. People on bikes don't like to stop. Roundabouts eliminate the need too.
- 6 On roundabout, have separate path for less experienced bike riders. Use roundabouts at all intersections. Triggered traffic signals don't.
- 7 The road expansion will take out trees that are along the road. Plan to replant further back along the corridor?

- South end of CR 100
- South of Hutchison on CR 100
- Hutchison/CR 98 intersection
- Hutchison/CR 98 intersection
- Hutchison/CR 98 intersection
- Hutchison/CR 98 intersection
- CR 98 between CR 32 and Hutchison- east side

# County Road 98 Bike and Safety Improvement Project, Phase 2



## County Road 98 Corridor (Solano County to South of Road 29 )





County Road 98  
Bike and Safety Improvement Project, Phase 2



**County Road 98 Corridor (Solano County to South of Road 29 )**  
**Comment**

**Location**

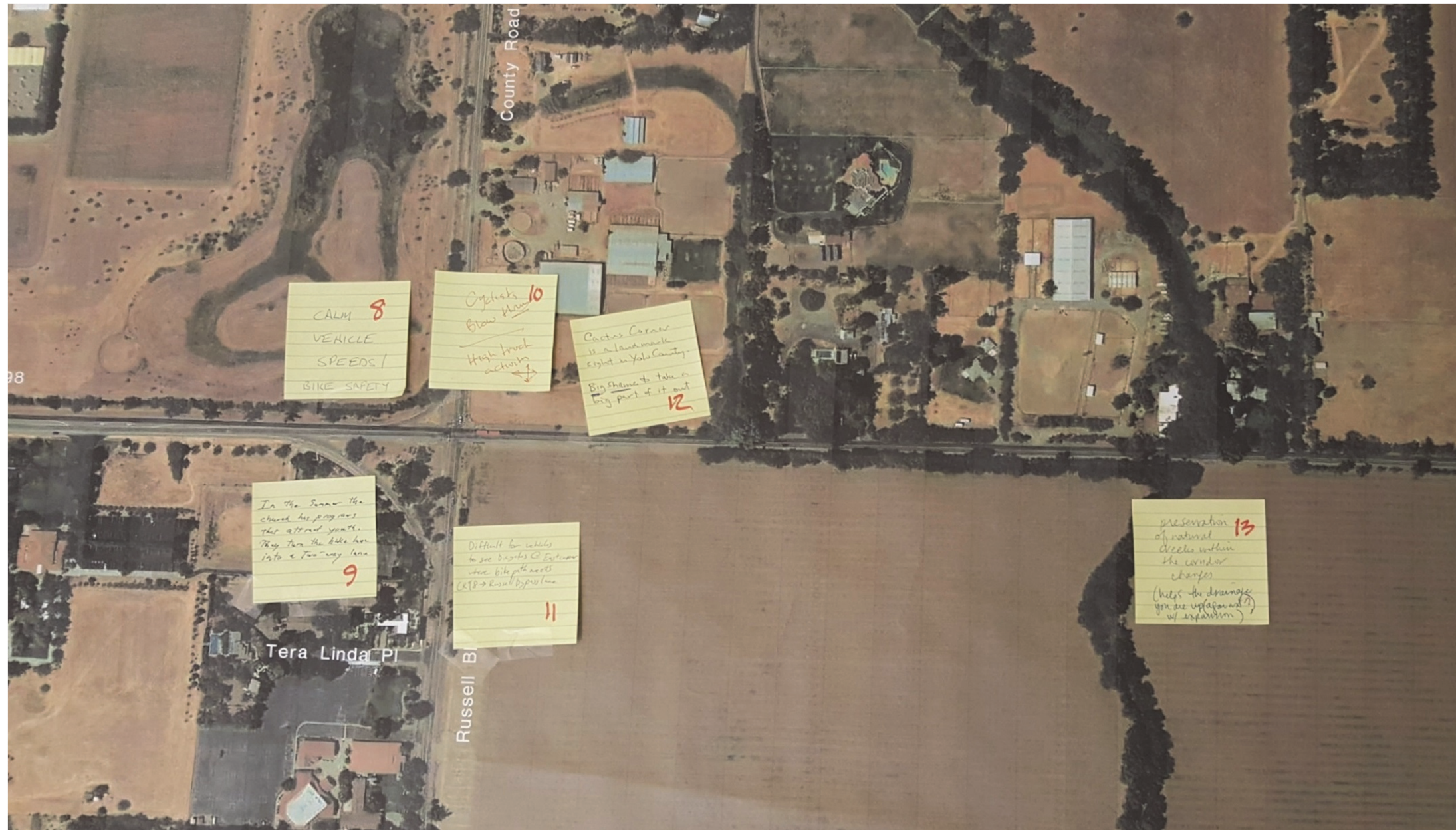
- |    |  |   |
|----|--|---|
| 8  | Calm vehicle speeds! Bike safety.  | Russell Blvd/CR 98 intersection                         |
| 9  | In the summer the church has programs that attract youth. They turn the bike lane into a two-way lane. | South-east quadrant at Russell Blvd./CR 98 intersection |
| 10 | Cyclists blow through. High truck activity.  | Russell Blvd./CR 98 intersection - all directions       |
| 11 | Difficult for vehicles to see bicyclists   | path meets CR 98/ Russell bypass                        |
| 12 | Cactus Corner is a land-mark sight in Yolo County. Big shame to take a part of it out.                 | South-east corner of Russell Blvd./CR 98 intersection   |
| 13 | Preservation of natural creeks within the corridor changes - helps the drainage.                       | 1700 ft. north of Russell Blvd./CR 98 intersection      |



# County Road 98 Bike and Safety Improvement Project, Phase 2



## County Road 98 Corridor (Solano County to South of Road 29 )





County Road 98  
Bike and Safety Improvement Project, Phase 2



**County Road 98 Corridor (Solano County to South of Road 29 )**

**Comment**

**Location**



- |  |   |
|--|---|
| 14 Remember "Ellie Gerhardy" at pole line and Covell- She was crushed by a tomato truck- she was at light waiting on bike. | .5 mile north of Russell Blvd./CR 98 intersection |
| 15 Real world speed often between 60-70 MPH - too fast.  | CR 98   |
| 16 Drainage channels + maintenance of existing paths is currently poor   | CR 31/CR 98 intersection (north-west)             |
| 17 Prefer roundabouts in all three intersections   | W Covell Blvd/CR 98 intersection                  |
| 18 A traffic light would allow people to maintain high speeds, where now they must stop.                                   | CR 31/CR 98 intersection (south-east)             |

# County Road 98 Bike and Safety Improvement Project, Phase 2



## County Road 98 Corridor (Solano County to South of Road 29 )

