

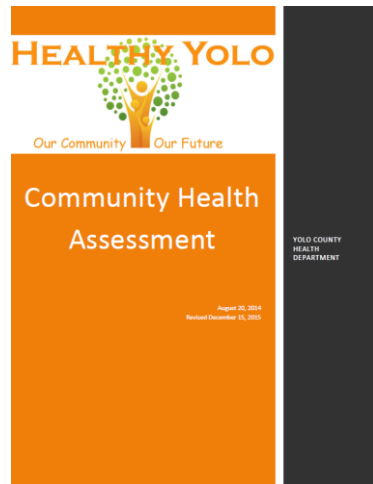
Community Health Improvement Plan Annual Report

EMILY VADEN, MPH
ACCREDITATION COORDINATOR

YOLO COUNTY HHSA

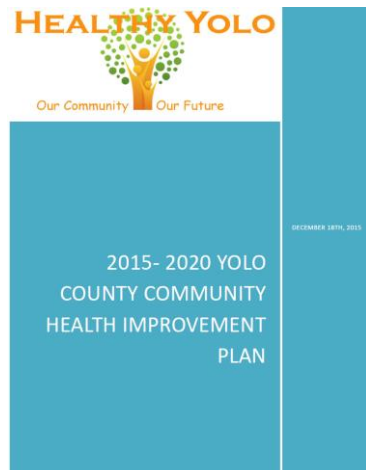


What is the CHIP?



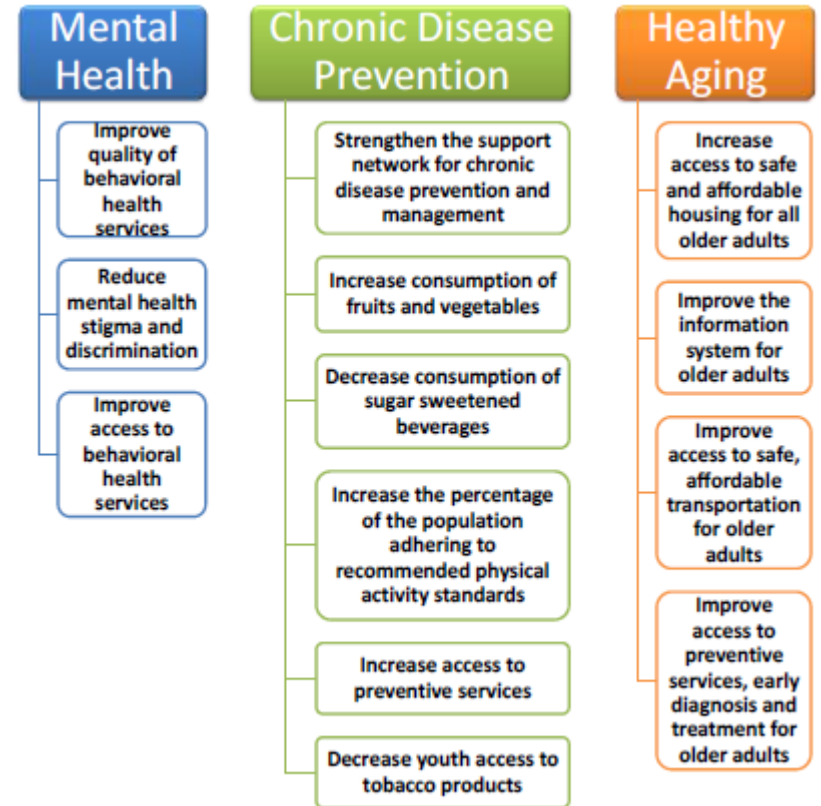
August 2014

[Available here](#)



December 2015

[Available here](#)



How did we do it?



The 5 Conditions of Collective Impact

- 1 Common Agenda**
 - Common understanding of the problem
 - Shared vision for change
- 2 Shared Measurement**
 - Collecting data and measuring results
 - Focus on performance management
 - Shared accountability
- 3 Mutually Reinforcing Activities**
 - Differentiated approaches
 - Coordination through joint plan of action
- 4 Continuous Communication**
 - Consistent and open communication
 - Focus on building trust
- 5 Backbone Support**
 - Separate organization(s) with staff
 - Resources and skills to convene and coordinate participating organizations

2016 ACCOMPLISHMENTS

- Implementation of the dashboard in April 2016 (found at www.HealthyYolo.org).
- 11 programs/agencies contributed data.
- The average attendance per meeting was 13 participants.
- Health outcome data and targets were added to dashboard.
- Overall, there are 91 individuals on the Healthy Yolo distribution lists.

Strategies				
Name	Current Value	Change	Target Value	
☑ Increase Access to Chronic Disease Prevention and Management				
☑ Increase Exposure to Harvest of the Month (HoM) Campaign				
☑ % of WIC Clients who recognize Harvest of the Month (HoM) Campaign	47%	↑ 1	10%	
☑ # of schools where Harvest of the Month (HoM) is promoted	5	↑ 1	4	
☑ # of kids who receive Harvest of the Month (HoM) taste tests	6,324	↑ 1	1,495	
☑ # of County Nutrition Action Partnership (CNAP) partners who utilize Harvest of the Month (HoM) with their clients	7	→ 1	5	
☑ # of MESA programs that utilize Harvest of the Month (HoM)	3	↑ 1	2	



Yolo County's Perinatal Mental Health Collaborative Kicking off May is Mental Health with their Blue Dot Campaign to promote awareness of perinatal mood and anxiety disorders.

"Good to know what the County's goals are so as we set our own local program goals or work at state and national goals, we are consistent."

"Helping us all to identify our strengths and weaknesses so we can focus our energy more appropriately."



Elementary students learning garden skills at the Hanna and Herbert Bauer Memorial Garden.

"I am collecting more meaningful data and making it available to partners."

THANK YOU TO OUR PARTNERS

211 Yolo

Area 4 Agency on Aging

BB CAN

Capay Valley Vision

CommuniCare Health Centers

Dairy Council of CA

Dignity Health

NAMI Yolo

Partnership HealthPlans of California

St. John's Retirement Village

Sutter Health

UC Cooperative Extension

Winters Senior Foundation

Yolo Adult Day Health Center

Yolo County Administrator's Office

Yolo County Commission on Aging

Yolo County Health Council

Yolo County HHSA, Healthy Living for Older Adults Program

Yolo County HHSA, Mental Health Services Act Programs

Yolo County HHSA, Nurse Home Visiting Program

Yolo County HHSA, Nutrition Education & Obesity Prevention Program (NEOP)

Yolo County HHSA, Safe Routes to School Program

Yolo County HHSA, Tobacco Prevention Program

Yolo County HHSA, Quality Management Program

Yolo County Local Mental Health Board

Yolo Family Service Agency

Yolo Food Bank

Yolo Healthy Aging Alliance



A4AA: Area 4 Agency on Aging
 CHA: Community Health Assessment
 CHIP: Community Health Improvement Plan
 CNAP: County Nutrition Action Partnership

FSP: Full Service Partnership
 HHSA: Health and Human Services Agency
 HotM: Harvest of the Month
 MHP: Mental Health Plan

NEOP: Nutrition Education & Obesity Prevention
 TRL: Tobacco Retail License

For more information, check out healthyyolo.org

Or contact me at emily.vaden@yolocounty.org
530 666-8504

Or join us at our next joint workgroup meeting:

Weds April 26th from 9-11am

Community Room, Gonzales Building

25 N. Cottonwood St Woodland, CA

