



Office of the County Administrator

COUNTY OF YOLO

Patrick S. Blacklock
County Administrator

NATURAL RESOURCES DIVISION

625 Court Street, Room 202
Woodland, CA 95695
530-666-8150 • FAX 530-668-4029
www.yolocounty.org

NOTICE OF PREPARATION (NOP) and NOTICE OF SCOPING MEETING for the DRAFT ENVIRONMENTAL IMPACT REPORT (EIR) for the 2017 CACHE CREEK AREA PLAN UPDATE

DATE: May 26, 2017

TO: Responsible Agencies, Interested Parties, and Organizations

SUBJECT: Notice of Preparation of an Environmental Impact Report for the 2017 Cache Creek Area Plan Update and Scheduling of a CEQA Scoping Meeting on Thursday, June 8, 2017

PROJECT TITLE: 2017 Cache Creek Area Plan Update

NOP COMMENT PERIOD: May 26, 2017 to June 26, 2017 at 5:00pm (see information below)

NOP SCOPING MEETING: June 8, 2017 at 8:30am
Yolo County Planning Commission (see information below)

PROJECT LOCATION: Lower Cache Creek in Yolo County. The Cache Creek Area Plan (CCAP) covers 28,130 acres designated by the State Department of Conservation as falling within a Mineral Resources Zone (MRZ). This area lies on either side of lower Cache Creek between the Capay Diversion Dam and the town of Yolo (see attached Figure).

PROJECT DESCRIPTION: The CCAP is a rivershed management plan for Lower Cache Creek originally adopted in 1996. It integrates environmental and economic goals related to the aggregate mining industry. For over 20 years, this plan has been implemented by Yolo County in partnership with local aggregate resources producers, regulatory agencies, landowners, and other stakeholders. The CCAP includes the Off-Channel Mining Plan (OCMP) which is an aggregate resources management plan and the Cache Creek Resources Management Plan (CCRMP) which is a creek restoration plan, and is implemented by several regulatory ordinances. The CCAP is based on the concept of adaptive management, and relies on ongoing detailed monitoring, analysis, and reevaluation. A comprehensive ten-year review is mandatory. The 2017 CCAP Update constitutes the second mandatory ten-year program review. The purpose of the Update is to analyze trends and adjust the program to avoid unexpected effects on creek resources, focusing on: changes in creek conditions; analysis of collected data; and new regulatory requirements. The Proposed Draft 2017 CCAP Update was released for public review on May 10, 2017. This package of documents can be viewed at the following web link:

<http://www.yolocounty.org/general-government/general-government-departments/county-administrator/county-administrator-divisions/natural-resources/the-cache-creek-area-plan-ccap>

The changes to the CCAP program represent the project being analyzed under CEQA. These modifications fall into three categories: 1) updates to include history and context of what has occurred under the program since 1996, including updates related to the regulatory framework and corrections of errata; 2) clarifications that better describe the intent of the program relative to the text included in

the original documents; and 3) other proposed changes to the program. A more detailed project description is included in a separately prepared CEQA Initial Study which may be attached, or is available at the website listed above or by contacting the lead agency.

LEAD AGENCY: Yolo County Natural Resources Division, County Administrator's Office

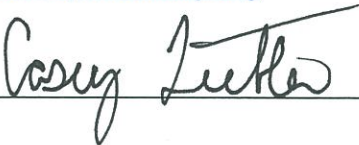
COMMENT PERIOD: Written comments on the NOP can be sent anytime during the NOP review period. **The NOP review and comment period begins May 26, 2017 and ends June 26, 2017 at 5:00pm.** Your views and comments on how the project may affect the environment, and what potential environmental impacts the EIR should consider, are welcomed. All comments should be directed to the Yolo County Natural Resources Division, Attention: Casey Liebler, Natural Resources Program Assistant, 625 Court Street, Room 202, Woodland, CA 95695. Comments may also be emailed to Casey.Liebler@yolocounty.org. Please include the name of a contact person for your agency, if applicable.

SCOPING MEETING: Oral comments on the NOP may be provided at the Scoping Meeting to be held June 8, 2017 at 8:30am before the Yolo County Planning Commission located at the Yolo County Board of Supervisors Chambers in the Yolo County Administration Building at 625 Court Street in Woodland, CA 95695. If you have questions regarding this NOP or the Scoping Meeting, please contact Casey Liebler at (530) 666-8236.

PROBABLE ENVIRONMENTAL EFFECTS OF THE PROJECT: The County has determined that an EIR will be prepared and potential impacts related to implementation of the Project will be evaluated for the following CEQA topics in the EIR: Aesthetics, Agriculture and Forestry Resources, Air Quality, Biological Resources, Cultural Resources, Geology and Soils, Greenhouse Gas Emissions, Hazards and Hazardous Materials, Hydrology and Water Quality, Land Use, Mineral Resources, Noise, Population and Housing, Public Services, Recreation, Transportation and Circulation. If significant impacts are identified, the EIR will include mitigation measures to reduce the impacts to a less-than-significant level, if feasible.

Casey Liebler, Natural Resources Program Assistant
Yolo County Natural Resources Division, County Administrator's Office
(530) 666-8236 or Casey.Liebler@yolocounty.org

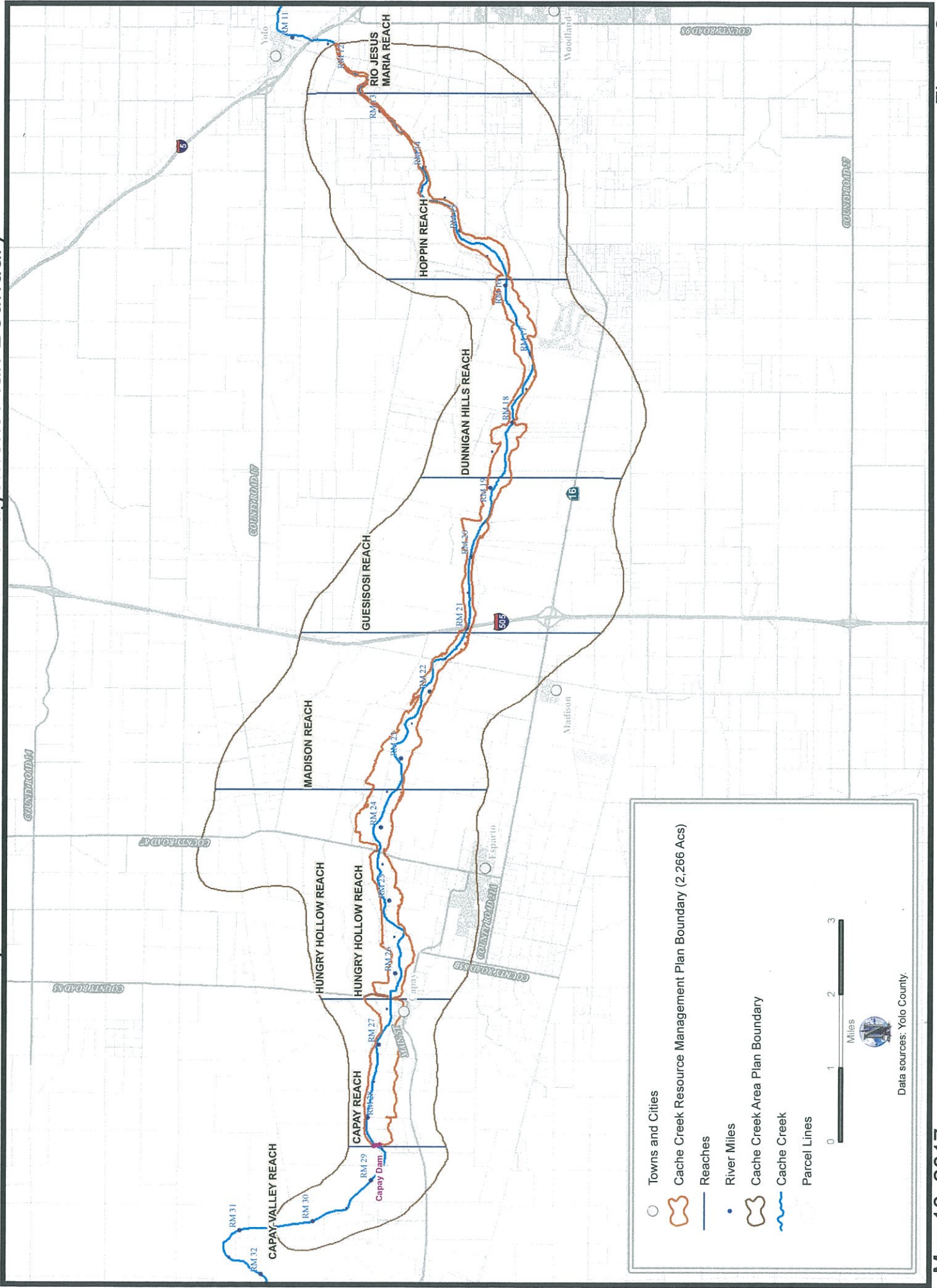
Signature:



A handwritten signature in cursive script, reading "Casey Liebler", is written over a horizontal line.

Attachment – CCAP Figure

Cache Creek Area Plan Update - Cache Creek Resource Management Plan Boundary



May 10, 2017

Figure 2