

Mental Health Director's Report

April 30, 2018

First Responders' Mental Health Urgent Care -Thank you to those of you who joined us at the grand opening on April 4th. It was a beautiful day and we had a great turnout. We are beginning to see more clients coming from more of our partners.





Continuum of Care Workgroup - [Presentation to BOS from 5/8/18.](#)

Sheriff Department – Please see the attached response from the Sherriff to last month’s concerns regarding the jail population.

Pine Tree Gardens- Pine Tree Gardens is structured as two separate homes (East and West), both located in Davis. Each house operates as a Board and Care facility and each house has a separate operator for the Board and Care functions. To complicate matters further, Turning Point Community Programs owns both homes outright and operates as an LLC for the houses. Between the two homes, Pine Tree Gardens provides housing for 27 clients, most of whom receive Social Security Income, and receive an enhanced rate for Board and Care. These clients all pay \$1,100 per month. The Board and Care operators are required to cover 24/7 staffing and despite having the client income are unable to cover costs above staffing and food and supplies.

In March of 2017, Turning Point’s Executive Director approached the Yolo County Health & Human Services Agency (HHS) to report that the organization was experiencing operating losses associated with the homes. The operators were not paying rent or utilities and Turning Point was absorbing all maintenance costs for upkeep. HHS offered to assist if it became necessary, but no immediate actions were identified. HHS was approached again in December by Turning Point and informed that the problem had gotten worse. At this point, we asked for a revenue and expense accounting information and discussed some options that we may be able to assist with. We notified our Local Mental Health Board and created a sub-committee to strategize long term options. In particular, one of the strategies

identified and offered to Pine Tree Gardens was for HHSA to pay a monthly stipend of approximately \$300-400 for our clients that live at the homes who are either conserved or are receiving services through our mental health full service partnership program. This would allow additional income to Pine Tree Gardens for approximately half of their clients, as not all of their residents are eligible for this stipend.

Last week Turning Point provided us with the financials that we previously requested, and we have scheduled a call with Turning Point and the County Administrator's Office to work through some potential solutions and next steps.

Yolo Family Service Agency -Yolo Family Service Agency's (YFSA) Board has realized that the agency is no longer financially sustainable. Their Board is meeting this evening and our understanding is that they will be taking the final actions to sell their property, issue final checks, transfer contracts and close out the business effective April 30. The CAO's office and HHSA have been working closely with YFSA board members and staff to develop contingency plans for the staff and, most importantly, the clients. YFSA's Board approached CommuniCare and Turning Point about transferring clients and clinicians. Additionally, HHSA reached out to North American Mental Health regarding the possibility of absorbing the clients who fall into the mild to moderate criteria for mental health services. Tomorrow, County staff, CommuniCare staff, and staff from Turning Point Community Programs and North American Mental Health will attend YFSA's all staff meeting to support staff and develop transition plans for our children they serve. County Human Resources will be on site to assist all clinical staff in completing Extra Help employment applications for Yolo County. We will hire all clinical staff for a short time so that there is no disruption in service and all of the youth get served until we determine the best transition plan for them. This will also allow time for CommuniCare, Turning Point and North American Mental Health to interview current YFSA staff and hopefully employ them all. If you have any questions or would like additional information please do not hesitate to contact me directly.

Substance Use Disorder Update - On Monday April 23, Yolo County HHSA issued letters of intent to award to several providers located both within and outside of Yolo County that together will form a comprehensive continuum of services. July 1, 2018 Yolo County will be launching a new adult substance use continuum of care that will be comprised of the awardees from this RFP and include the following services; outpatient services (up to 9 hours of clinical services/week), intensive outpatient services (9-19 hours of clinical services per week), residential treatment (24 hour residential facility that provides a minimum of 20 hours of clinical services per week), case management (to assist clients in linkage for mental health, physical health, and other necessary services, while also assisting with levels of care transitions between substance use providers), physician consultation (allowing substance use providers medical directors to consult with an addiction specialist), transitional living services for the criminal justice involved population, residential detoxification services, and recovery services (provided to clients who may relapse after having completed their substance use continuum of services and need short term connection back to minimal services to stabilize once again).

An exciting new component of the substance use services delivery system that will begin on July 1st, while be centralized access for services. In the past, entry into substance use services have been sporadic, and not well coordinated or tracked. Under our new system starting July 1st, there will be 3 centralized access points; a 24/7 access line which will be the same 24/7 access line for mental health, in-person access and referral to treatment through Yolo County HHSA's Bauer building and First

Responder Urgent Care site, as well as, CommuniCare Health Centers providing in-person access and referral to treatment in Davis, Woodland, and West Sacramento. All clients will be screened using the same tool for consistency, and all access points will capture the same data ensuring that we meet State and Federal regulations regarding access to services.

Navigation Center - HHSa is continuing to work with the City of Davis and Yolo County Housing on locating a Navigation Center at the Pacifico property in South Davis. CommuniCare Health Centers (CCHC) will be the service provider. To assist with readiness while the property rental is secured and renovations are completed, CCHC staff will locate interim at the West Sacramento Urgent Care site for training and program planning.

Psychiatry Recruitment - Yolo County faces similar psychiatrist recruitment and retention challenges as other counties and public agencies. In our efforts to provide access, quality and continuity of care we have taken several steps, including retaining a recruiter to allow us to attract candidates from around the country – including one who is currently seriously considering a full time position with the county. As more psychiatrists are turning to locum companies to find part time employment, early, mid and late in their careers, we have expanded our relationship with locum tenem companies so that we can fill vacancies in a more responsive way. We currently have one full time physician, Dr. Clare Maxwell, and one part time physician, Dr. Mona Gill who have come to us via such an arrangement. As you know, we also added telepsychiatry in August of last year, and Dr. Zev Wiener is our telepsychiatry doctor who is well liked by clients and staff.

We have also successfully recruited a local psychiatrist who will begin working with us in June, who is Trilingual, speaking Korean and Spanish in addition to English.

Cognitive Behavioral Therapy Training - Several Yolo County HHSa clinical staff and provider staff have been participating in TEAM-Cognitive Behavioral Therapy (TEAM-CBT) training provided by Dr. Harrington, a Level 5 Certified Trainer. The 16 week course concludes May 8, and we have already seen a positive impact. We are delighted to be adding to the therapists' skill set and the tools that they can bring to serving our clients.

UC Davis – Yolo County Partnership – Medical Students - Our Medical Director, Leigh Harrington, has a longstanding relationship with the UC Davis Medical School Psychiatry Department. She has collaborated with her UCD colleagues to set up Yolo County HHSa's Mental Health clinic as a training site for interested medical students. Yolo County has long sought to work with UC Davis in training medical students and residents. The benefits include exposing future physicians and psychiatrists to our clinics so that they may choose Yolo County HHSa as a future site to practice, potential for increased access, and the vibrant learning environment that develops where training is taking place. Yolo County HHSa plans to welcome their first medical student to the clinic on May 1. Medical Students will be closely supervised by attending physicians, and will join sessions with the permission of the client.

MHSA Reversion - On December 28, 2017, MHSUDS Information Notice 17-059 notified counties that unspent MHSA funds subject to reversion would be considered reverted and reallocated to counties, as long as counties have a plan to fully expend the funds by July 1, 2020. Yolo County received confirmation from DHCS on March 28, 2018 that we have \$386,700 in Innovation Funds from FY08-09 and \$268,922 of Capital Facilities and Technology Needs (CFTN) Funds from FY16-17 which are subject to reversion. Yolo County HHSa intends to allocate these funds in accordance with the Mental Health

Services Act Three-Year Program & Expenditure Plan 2017-2020. The plan to fully expend these funds by July 1, 2020 will be posted for public review and presented to the Board of Supervisors for approval by June 2018.

Federal Network Adequacy Standards - On May 6, 2016, the Centers for Medicare and Medicaid Services (CMS) published the Medicaid and Children's Health Insurance Program Managed Care Final Rule, commonly referred to as the 438 Mega Rule, which revised Title 42 of the Code of Federal Regulations. Among the new mandates in the Managed Care Rule are requirements for network adequacy that become effective July 1, 2018.

The California Department of Health Care Services (DHCS) issued network adequacy requirements (MHSUD IN 18-011) to all County Mental Health Plans February 13, 2018. Mental Health Plans (MHPs) are required to demonstrate compliance with network adequacy standards for outpatient specialty mental health services and, where applicable, DMC-ODS services provided to both adults and children/youth. The majority of network adequacy standards include: Time and Distance, Timely Access, and Network Certification data collection and documentation.

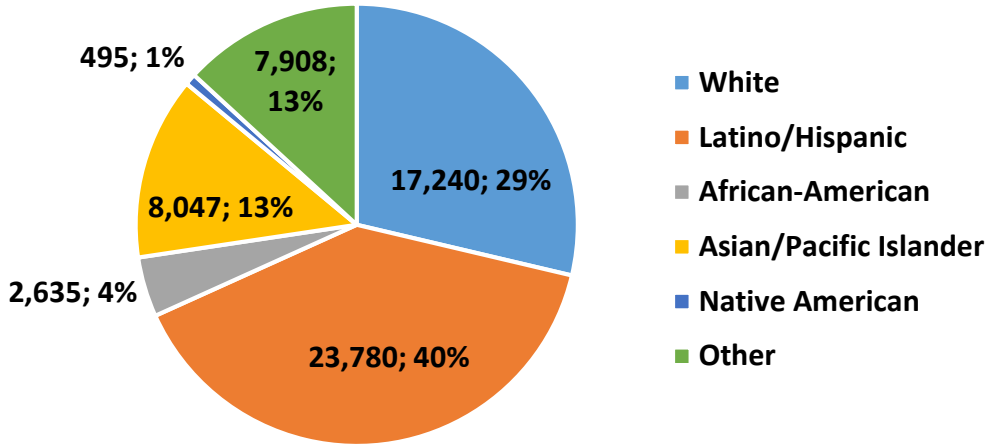
Yolo County HHSA submitted the inaugural report on March 29, 2018, including the Network Adequacy Certification Tool (NACT), GIS maps, Policies and Procedures, Contracts, and additional supporting documentation and will provide all other materials as requested by DHCS and quarterly thereafter. We are currently awaiting DHCS full review for Network Certification

May is Mental Health Month - Since 1949, Mental Health Month has been observed in May. The purpose is to raise awareness about mental illnesses and draw attention to suicide, ultimately educating our community and reducing stigma surrounding mental health. As we celebrate Mental Health Month, we recognize the incredible strides we've made in promoting understanding, increasing opportunities and improving the lives of people living with mental health and substance use problems. Mental Health Month is an opportunity to reflect on how far we've come and is also an opportunity to acknowledge how much more work there is to do. Please refer to the May is Mental Health Month 2018 calendar of local events. All Local Mental Board Members are invited to participate in the events throughout May, listed [here](#) and attached at the end of this report.

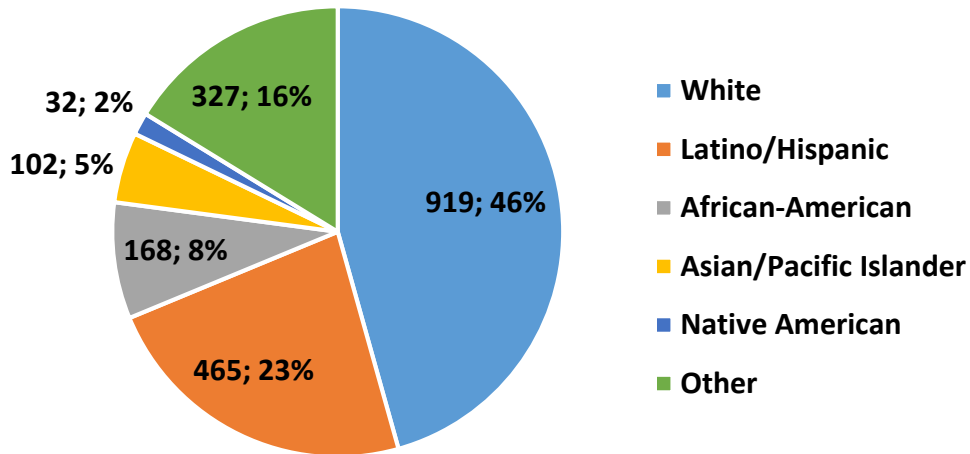
Data - The following data was provided to Yolo County HHSA by the External Quality Review Organization and represents Approved Medi-Cal Claims data for persons receiving specialty mental health services in Yolo County. The pie charts compare the demographic compilation of all Medi-Cal enrollees in Yolo County with the demographic compilation of the Medi-Cal beneficiaries who received specialty mental health services in 2016. The penetration rate data provide a reflection of access to services across a three-year period, comparing Yolo's performance with other medium-sized Mental Health Plans (MHPs) and the statewide averages, across the following domains: all Medi-Cal beneficiaries served in Yolo County, foster care, Transition aged youth, and Latino/Hispanic beneficiaries.

Yolo MHP Medi-Cal Enrollees and Beneficiaries Served in CY16, by Race/Ethnicity

Yolo County Medi-Cal Enrollees



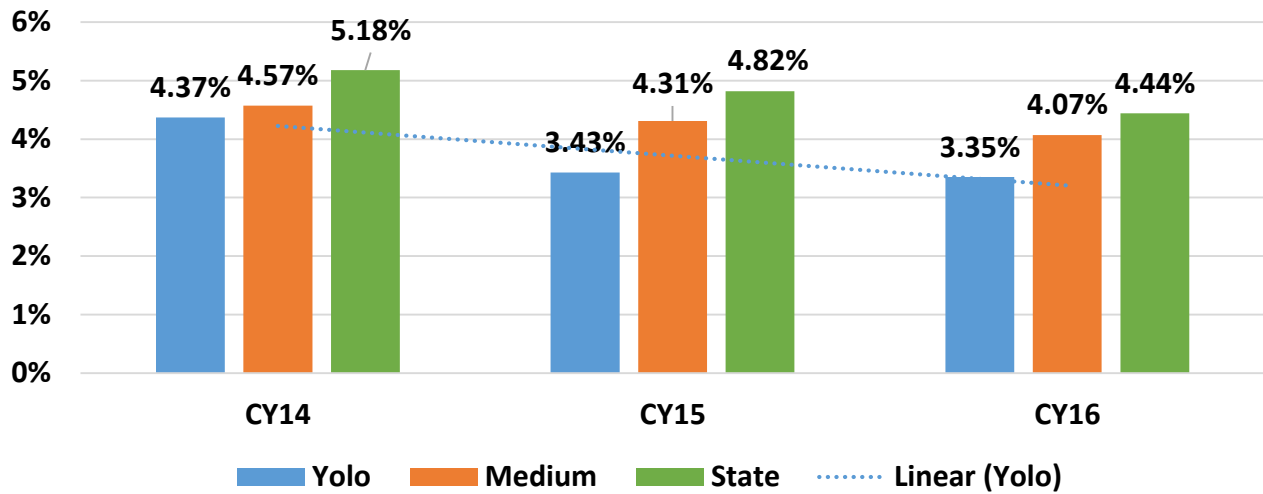
Yolo County Medi-Cal Beneficiaries Served



In CY16, there was a disproportionate representation of White and Latino/Hispanic Medi-Cal beneficiaries receiving Specialty Mental Health Services in Yolo County. White Medi-Cal enrollees comprised 28.7% of all Yolo County Medi-Cal enrollees but accounted for 45.7% of beneficiaries receiving Specialty Mental Health Services. Conversely, Hispanic Medi-Cal enrollees comprised 40% of all Yolo County enrollees, but accounted for 23% of the beneficiaries receiving services.

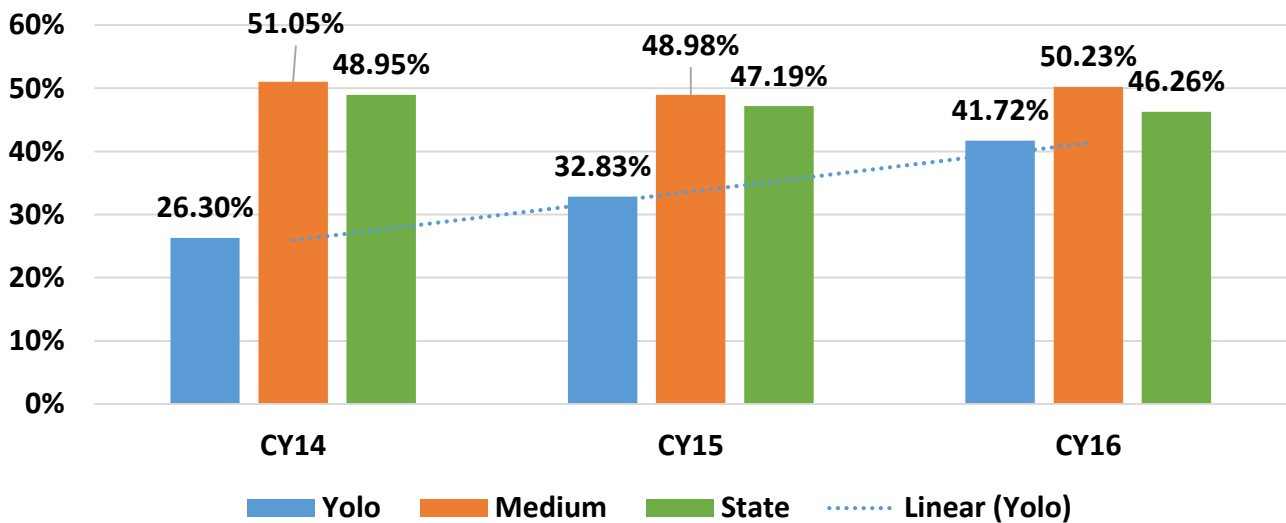
Note: The data in this report was provided by the California External Quality Review Organization, Behavioral Health Concepts, Inc.

Yolo MHP Overall Penetration Rates*



Consistent with the statewide trend, the MHP’s overall penetration rate has been trending downward from CY14 (4.4%) to CY16 (3.4%). Yolo County remains under the average for medium MHPs (4.1%) and the statewide average (4.4%) in CY16.

Yolo MHP Foster Care Penetration Rates

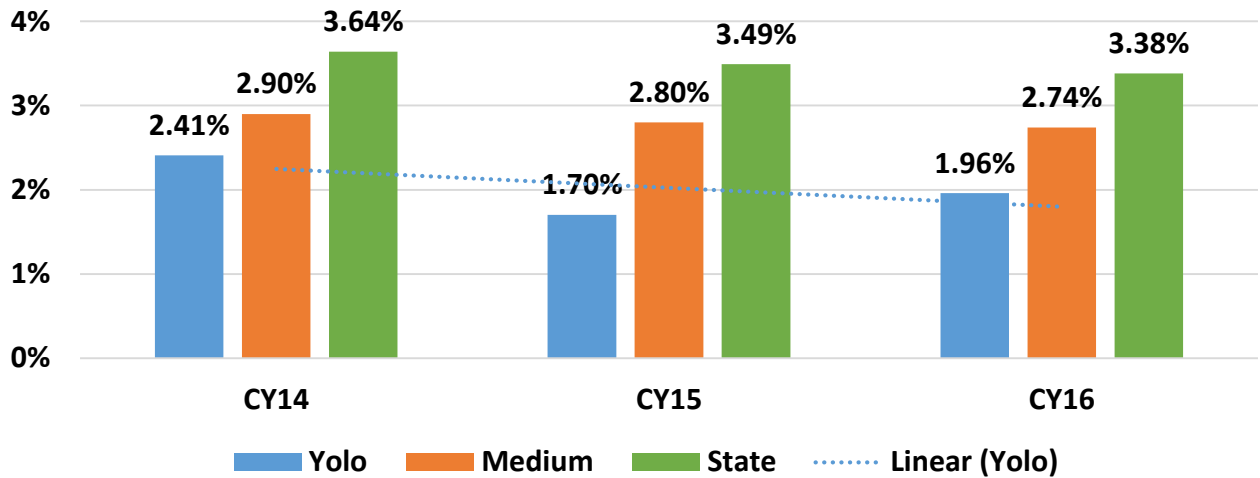


The MHP’s foster care penetration rate has increased 63% (26.30% CY 14 to 41.72% CY16) over past three years, while the medium and statewide averages decreased slightly over the period.

*The penetration rate is calculated by dividing the number of unduplicated beneficiaries served by the monthly average enrollee count.

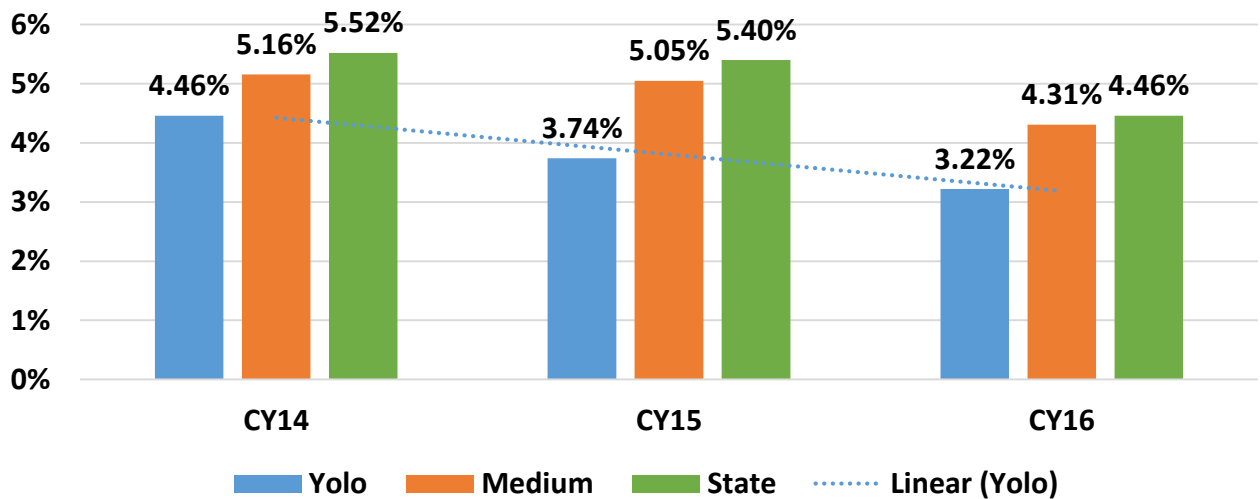
Note: The data in this report was provided by the California External Quality Review Organization, Behavioral Health Concepts, Inc.

Yolo MHP Hispanic Penetration Rates



The MHP’s Hispanic penetration rate has trended downward from CY14 (2.41%) to CY16 (1.96%) over the past three years and remains well below the medium MHP (2.7%) and statewide averages (3.4%), which have also been trending downward.

Yolo MHP Transition Age Youth (TAY) Penetration Rate



The MHP’s TAY penetration rate has been trending downward from CY14 (4.5%) to CY16 (3.2%) and remains under the average for medium MHPs (4.3%) and the statewide average (4.5%), which have also been trending downward.

Note: The data in this report was provided by the California External Quality Review Organization, Behavioral Health Concepts, Inc.

Addressing questions about the jail population.

Looking at Ad Seg inmates (administrative segregation / solitary confinement population)

Inflexible visitation schedules

We have visiting available daily. However we have 6 different classifications of inmates that have to be kept separate.

Only one hour per day out of cells

Most of our inmates get 3 hours of time out of their cells daily.

No library access

We provide donated books to the inmates and they are rotated at least monthly. Inmates also have the ability to have someone purchase books for them and have them mailed to the facility.

No exercise access

Anytime an inmate is out of their cell they have access to the yard.

Not enough programming

We have various programs available. AA/NA , religious services, GED classes, Mental Health socialization, Tablets with about 100 programs on them and they can meet with mental health professionals.



Yolo County Health and Human Services Agency



May is Mental Health Month 2018

MAY 2018

| Sun | Mon | Tue | Wed | Thu | Fri | Sat |
|-----|-----|-----|-----|-----|-----|-----|
| | | 1 | 2 | 3 | 4 | 5 |
| 6 | 7 | 8 | 9 | 10 | 11 | 12 |
| 13 | 14 | 15 | 16 | 17 | 18 | 19 |
| 20 | 21 | 22 | 23 | 24 | 25 | 26 |
| 27 | 28 | 29 | 30 | 31 | | |

MAY IS MENTAL HEALTH MONTH HISTORY

Since 1949, Mental Health Month has been observed in May. The purpose is to raise awareness about mental illnesses and draw attention to suicide, ultimately educating our community and to reduce stigma surrounding mental health.

STIGMA REDUCTION ACTIVITIES

- **Mental Health Services Act Stop Stigma Awareness Wall:** Mental Health family members, clients, peers, and providers are encouraged to stop by the West entrance of the Bauer Building to sign a stigma reduction ribbon or blue dot throughout May to show your support of stigma reduction.
- **Lime Green Ribbon and Maternal Mental Health Blue Dot Pin Campaigns:** Pick up a lime green ribbon or blue dot pin from the Mental Health Reception Desks at all HHS Mental Health Clinics, the Bauer Building Welcome Desk, or an MHSA Wellness Center and wear it daily to show you actively support reducing mental health and maternal mental health stigma.
- **SNAP a Stigma Busting Selfie:** Stop by the Stigma Reduction Selfie station in the Bauer Bldg. or snap a selfie anywhere wearing your lime green ribbon and post to your personal social media accounts with one or all of the hashtags: #EachMindMatters #MillionsLikeMe #MIMHM2018.
- **Maternal Mental Health Blue Dot Campaign:** Show your agency/groups support for Maternal Mental Health by following the Yolo County Blue Dot campaign on facebook at: <https://www.facebook.com/YoloHealthServices/>. Learn more about Blue Dot Project at: <https://www.thebluedotproject.org/>

CALENDAR OF EVENTS

- **05/02, 12:45 PM:** Each Mind Matters at the Giants vs Padres game. For tickets visit: <https://groupmatics.events/event/eachmindmatters> (Supplies are limited)
- **05/03, 10:30 AM – 2:30 PM:** 9th Annual Yuba Sutter Mental Health Wellness and Recovery Rally, 1965 Live Oak Blvd., Yuba City. Mental Health Caseworkers, contact Jennifer Hernandez (530) 666-8524 for details.
- **05/04, 11:30 AM – 1:30 PM:** Stop Stigma Salsa Bar. Participate in stigma reduction activities and enjoy fresh salsa hosted by MHSA and the HHS Cultural Competency Committee. West Entrance – Bauer Building
- **05/04, 12:00 PM – 02:00 PM:** Yolo County Maternal Mental Health Collaborative Meeting “Breastfeeding and Maternal Mental Health” Thomson Conference Room – Bauer Building
- **05/05, 8:00 AM Registration/10:00 AM Walk:** NAMI Walks 2018, William Land Park, Sacramento, Register at: <https://www.namiwalks.org/index.cfm?fuseaction=donorDrive.event&eventID=742>
- **05/08, Board of Supervisors Presentation:** Stepping Up National Day of Action, Board of Supervisors Chambers (625 Court Street). Visit, <http://www.yolocounty.org/general-government/board-of-supervisors/board-meetings/board-of-supervisors-meeting-agendas-minutes> for this meeting agenda.
- **05/10, SAMHSA Children’s Mental Health Awareness Day.** Learn more at: <https://www.samhsa.gov/children/awareness-day/2018>
- **05/10, 3:00 PM- 5:00 PM:** Children’s Mental Health Awareness Day, Children’s Lobby – Bauer Building.
- **05/11, 11:00 AM – 1:00 PM:** Yolo County Cultural Competence Committee Welcoming and Mental Health Awareness Event. Stop by for refreshments, information, and video presentations. Walker/Thomson Rooms – Bauer Building.
- **05/14 – 05/18, Consumer Perception Survey Collection,** Yolo County Mental Health Clinics & Wellness Centers.
- **05/16, Stepping Up National Day of Action,** Learn more at: www.stepuptogether.org
- **05/23, 9:30 AM – 12:00 PM:** Mental Health Matters Day: California Strong Mental Health America of California, East Steps - State Capitol. <http://www.mentalhealthmattersday.org/>
- **05/23 – 05/25, Digital Stories Workshop for Transition Age Youth.** Participants will be selected through application and screening process. Space is limited! Contact Laura Christensen at (530) 681-5292.
- **05/24, 12:00 PM – 1:00 PM:** Comprehensive Perinatal Services Program Spring 2018 Roundtable Presents: Maternal Mental Health, Community Room – Gonzales Building. Questions? Contact: Monica Koenig (530) 666-8522 or Monica.Koenig@yolocounty.org
- **05/30, 11:00 AM – 4:00 PM:** 7th Annual MHSA Consumer Art Show and Voting, Livingstone and Williams Rooms - Bauer Building.
- **06/01, 11:00 AM:** Annual MHSA Consumer Art Show Awards Presentation, Woodland Wellness Center – Bauer Building.

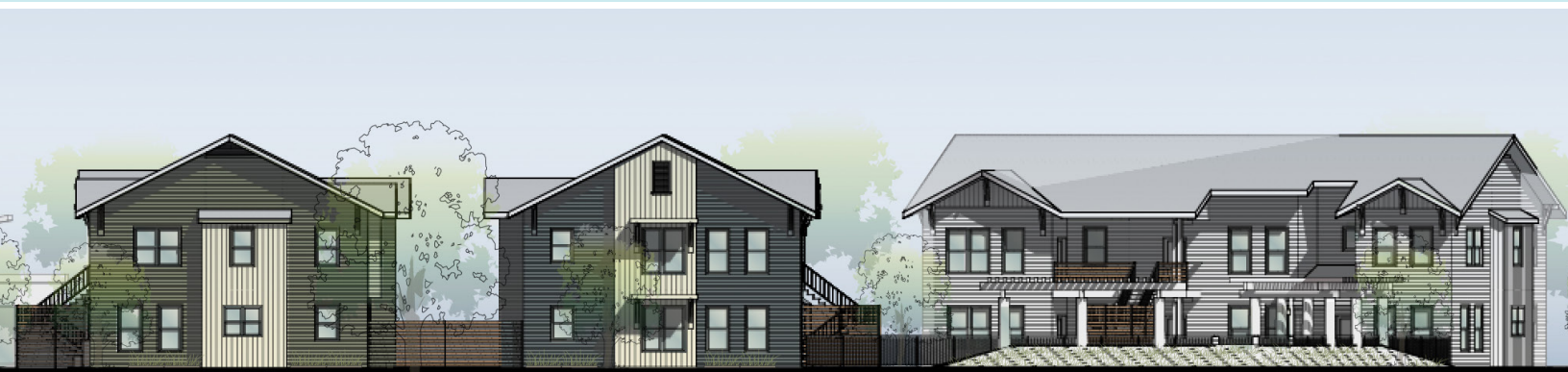
TRAININGS

To Register, Email: MHSA-MHTrainings@yolocounty.org

- **05/09 and 05/10, 1:00 PM – 5:00 PM:** Mental Health First Aid (Youth) *must attend both days, Community Room - Gonzales Building.
- **05/22 and 05/23, 1:00 PM – 5:00 PM:** Mental Health First Aid (Adult) *must attend both days, Walker Conference Room - Bauer Building.
- **06/12 and 06/13, 8:30 AM – 12:30 PM:** Mental Health First Aid (Adult) *must attend both days!, Community Room – Gonzales Bldg.

West Beamer Place

New Affordable Housing



West Beamer Place

10 N. Cottonwood Street
Woodland, CA 95695

(530) 419-5976

TTY: 800.877.8973 or 711

westbeamerplace.org

**Applications are available
to download on**

www.mercyhousing.org/CA-westbeamerplace

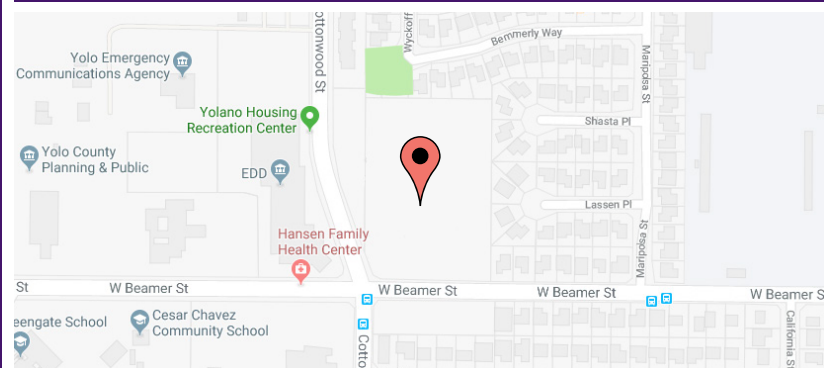
**Applications will be available
April 24, 2018**

**Applications must be mailed to
P.O. Box 8280
Woodland, CA 95776**

**Applications will be processed
in the order received**

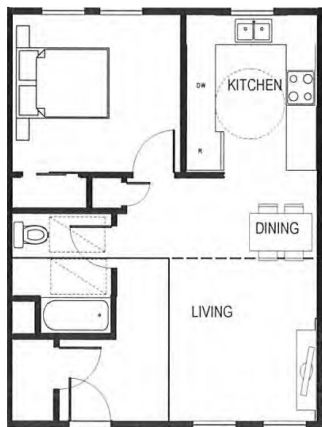
FEATURES AND AMENITIES:

- 80 Garden-style apartments (48 affordable and 32 permanent supportive)
- 15 two-story buildings
- Community building to include:
 - Property Management offices
 - Conference room
 - Multipurpose room
 - Kitchen
 - Laundry
 - Computer area
- Non Smoking Community except in designated outdoor area

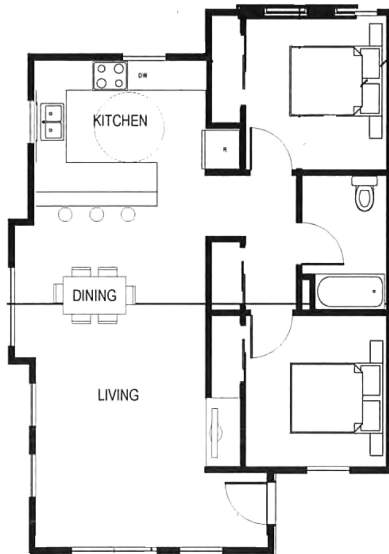


Reasonable accommodations will be made available for persons who make a request.

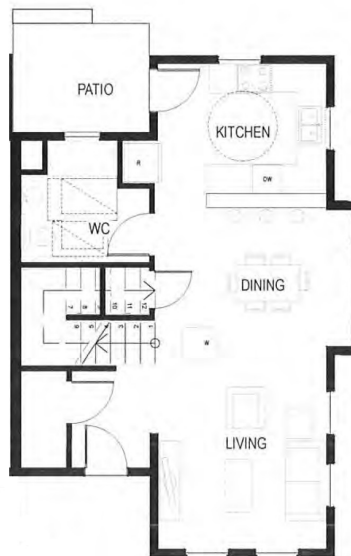




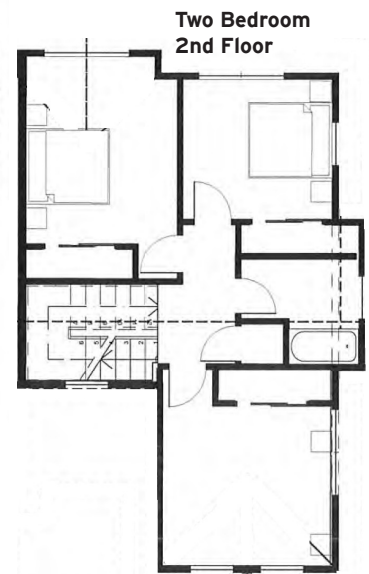
One Bedroom



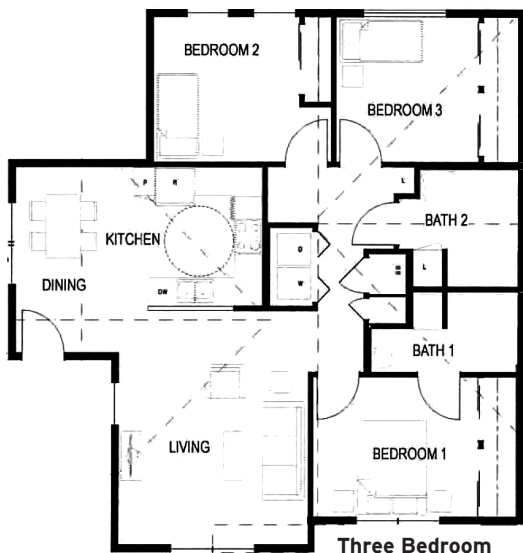
Two Bedroom



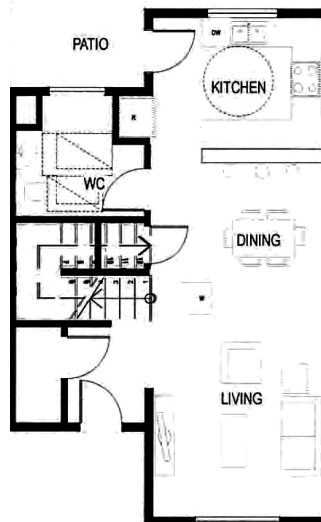
Two Bedroom
1st Floor



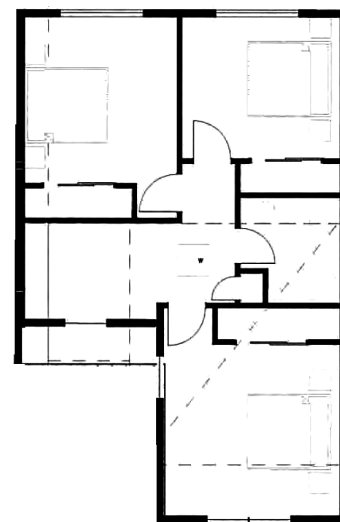
Two Bedroom
2nd Floor



Three Bedroom



Three Bedroom
1st Floor



Three Bedroom
2nd Floor

INCOME QUALIFICATIONS & RENTS*

| Unit Size | Household Size | No. of Units | Approx. Rent | Maximum Income |
|-----------|----------------|--------------|--------------|----------------------|
| 1 Bedroom | 1 to 2 Persons | 4 | \$780 | \$29,150 to \$37,450 |
| 2 Bedroom | 2 to 4 Persons | 19 | \$936 | \$33,300 to \$44,950 |
| 3 Bedroom | 4 to 7 Persons | 21 | \$1,081 | \$41,600 to \$51,600 |
| 3 Bedroom | 4 to 7 Persons | 3 | \$649 | \$24,960 to \$30,960 |

* Rents and Incomes are subject to change per regulatory agency.
Other restrictions apply. See Resident Selection Criteria for details.