

Who Are We Serving?

Health and Human Services Agency:
Child Welfare Services



Child Welfare Services: What do we do?

- We seek to promote child safety, well-being and permanency.
- Properly identify families that are at high risk of abuse and/or neglect.
- Provide the least intrusive level of intervention necessary to mitigate that risk
- Educate families, collaterals and community partners, and serve as a networker.



What Is Our Purpose?

- To protect the child;
- To protect other children in the home; and
- Provide help for the parents.
- The report of abuse may be a catalyst for bringing about change in the home environment. In turn, this may lower the risk of further abuse in the home.



What Is The Process?

- Intake line receives a call of suspected child abuse and neglect;
- We gather as much demographic and narrative information that we can;
 - What is the nature and extent of the maltreatment?
 - What circumstances accompany the maltreatment?
 - How does the child function day to day?
 - Is the child at increased vulnerability?
(0-5, cognitive or physical impairments, medically compromised)
 - What are the household dynamics? Who are the caregivers?
- We seek collateral information (police reports, premise history, prior CWS)
- We run a hotline decision making tool, staff and determine if the allegation(s) will be investigated.



What Is The Process?

Our intake a receives a call of suspected child abuse and neglect;

We gather as much demographic and narrative information that we can;

- What is the nature and extent of the maltreatment?
- What circumstances accompany the maltreatment?
- How does the child function day to day?
- Is the child at increased vulnerability?
 - (0-5, cognitive or physical impairments, medically compromised)
- What are the household dynamics? Who are the caregivers?

We seek collateral information (police reports, premise history, prior CWS)

We run a hotline decision making tool, we staff and we determine if we will investigate or not.



Intake Disposition of Call: Types of Response

Evaluate Out

No in person response.
Informational only.

10 Days

In person response within 10 days.
Lower risk to the child.

Immediate Response

In person response within 24 hours
Imminent risk to the child.



Intake Disposition of Call: Types of Response

10 Days

Immediate Response

A suspected child abuse report that is to be investigated (either as a 10 day or an immediate) is colloquially called a referral. Referrals outline the basis of the concern and identifies what the specific allegation is of abuse and/or neglect.

Allegations can be in terms of; general or severe neglect, physical abuse, sexual abuse, emotional abuse, caretaker absence, and exploitation.



What's in a word? Allegations/Substantiations/Cases.....

- **Allegation:** a claim or assertion that someone has harmed a child (actively or passively)
- **Allegation outcomes from referrals (11166pc)**
 - **Unfounded:** determined by the investigator to be false, inherently improbable, an accidental injury, or not to constitute child abuse or neglect.
 - **Inconclusive:** determined not to be unfounded, but in which the findings are inconclusive and there is insufficient evidence to determine if child abuse or neglect, as defined, has occurred.
 - **Substantiated:** determined by the investigator based on some credible evidence to constitute child abuse or neglect
 - Referral to Services/Close without court intervention
 - Court Ordered Intervention (Case)

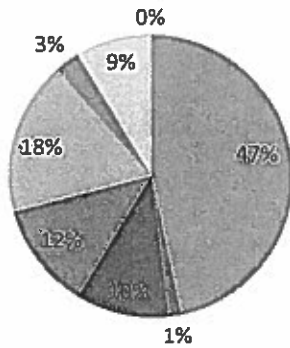
Penal Code Section 11165.12



Allegations over Time

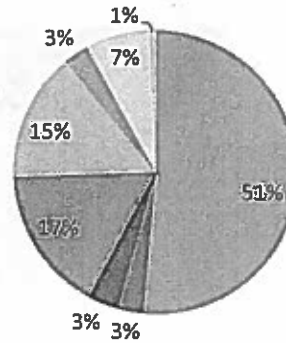
2014
2176 Allegations

- General Neglect-1383
- Severe Neglect-43
- At Risk-Sibling- 310
- Emotional Abuse- 361
- Physical Abuse- 525
- Caretaker Absence- 84
- Sexual Abuse-255
- Exploitation-3



2017
2461 Allegations

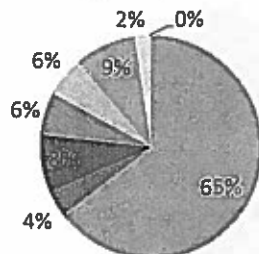
- General Neglect- 1795
- Severe Neglect- 111
- At Risk- Sibling- 120
- Emotional Abuse- 580
- Physical Abuse- 514
- Caretaker Absence- 102
- Sexual Abuse- 257
- Exploitation- 24



Substantiations over Time

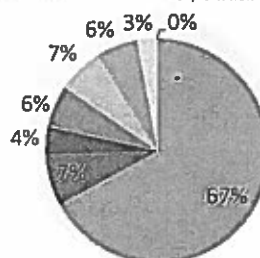
2014
385 Substantiations

- General Neglect-323
- Severe Neglect- 19
- At Risk Sibling- 42
- Emotional Abuse- 31
- Physical Abuse- 29
- Caretaker Absence-45
- Sexual Abuse- 10
- Exploitation-2



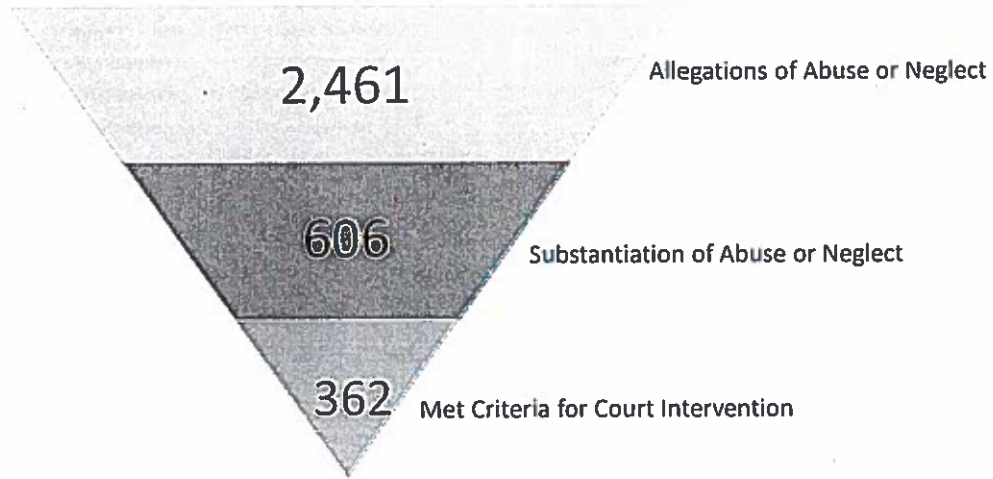
2017
606 Substantiations

- General Neglect-503
- Severe Neglect- 56
- At Risk-Sibling- 29
- Emotional Abuse- 46
- Physical Abuse- 50
- Caretaker Absence-45
- Sexual Abuse- 21
- Exploitation-1





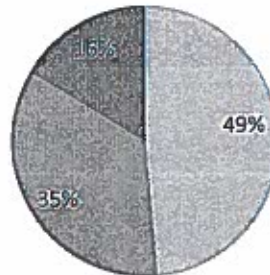
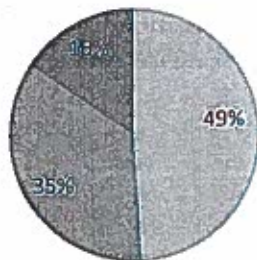
All Case Openings - 2017



General Neglect Substantiations

2014
323 Substantiations
■ Ages 0-5 (158) ■ Ages 6-12 (114) ■ Ages 13-17 (50)

2017
503 Substantiations
■ Ages 0-5 (245) ■ Ages 6-12 (176) ■ Ages 13-17 (82)





What is "General Neglect"??

Welfare & Institutions Code 300

(b) (1) The child has suffered, or there is a substantial risk that the child will suffer, serious physical harm or illness, as a result of the failure or inability of his or her parent or guardian to adequately supervise or protect the child, or the willful or negligent failure of the child's parent or guardian to adequately supervise or protect the child from the conduct of the custodian with whom the child has been left, or by the willful or negligent failure of the parent or guardian to provide the child with adequate food, clothing, shelter, or medical treatment, or by the inability of the parent or guardian to provide regular care for the child due to the parent's or guardian's mental illness, developmental disability, or substance abuse. A child shall not be found to be a person described by this subdivision solely due to the lack of an emergency shelter for the family.



What Does "General Neglect" Look Like??

Individuals within a family, or whose daily function is impaired by;

- Lack of Basic Necessities
- Mental Health Disorders
- Substance Use Disorders
- Intimate Partner Violence



What is Needed

- **Early Intervention utilizing Evidence Based Services**
 - Children exposed to trauma and neglect at young ages have poor long term outcomes.
 - There is a significant amount of general neglect that does not rise to the level of court involvement, but MAY if early intervention isn't available.
 - Evidence Based Services are best!
- **Community Education**
 - Who to call to consult re: concerns of child abuse and neglect so referral can be made
 - Education of community partners (law enforcement, schools, medical providers, child care, etc...)
 - Demystify Child Welfare Services (seek to remove culture of fear – residual from past thirty years)
 - Educate broader community to;
 - Destigmatize severe mental health and educate affected individuals and families on where to seek support
 - Develop a culture that understands that a substance abuse disorder is a chronic illness, similar to diabetes, not a weakness in the character of the individual



Questions?