



# ANSA OVERVIEW

ADULT NEEDS AND STRENGTHS ASSESSMENT

Kim Narvaez  
December 2018 Local Mental Health Board

# What is the ANSA?

Developed by the Dr. John S. Lyons, Ph.D.

Copyright is held by the Praed Foundation to ensure that it remains free to use

Multipurpose **information integration tool** that is designed to be the output of an assessment process

Multiple inputs of info may be combined to generate a measurement

A collection of unique items which are integrated into a **collaborative assessment** process.

Framework to **identify and measure** needs and strengths

**Informs** behaviorally-based case plan objectives from identified needs and strengths

Not a self report measure

Not solely a measure of clinical impression

Versions have been developed for other populations

- Transition Aged Youths (TAYs)
- Children and Early Childhood (0-5)
- Client with Developmental Disability
- Juvenile Justice involved

# What are the impacts of the ANSA?

## Effective Communication

- shared vision across all levels of the system
- facilitates the linkage between the assessment process and the design of individual service plans
- supports care coordination and participatory decision-making

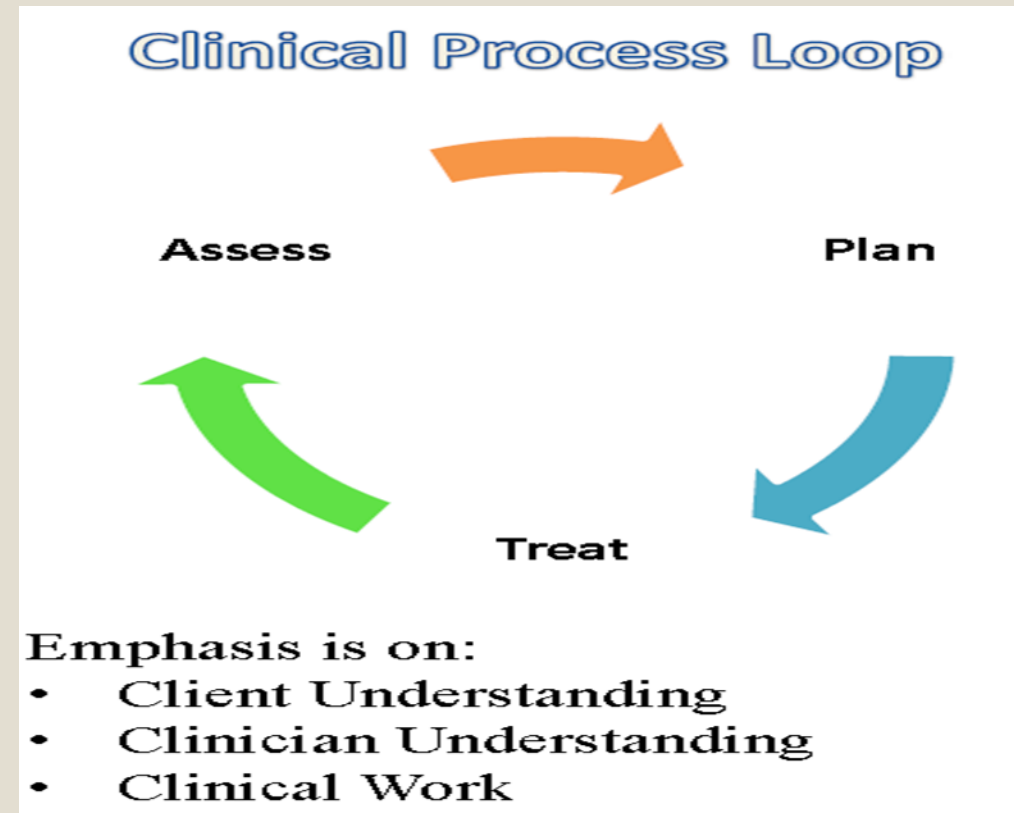
## Supports decision-making

- Level of care
- Intervention and service planning

## Allows for monitoring of clinical and functional outcomes

# Improves the Information Loop

Role of structured assessments in Behavioral Health



# 6 Principles

Items are included because they might impact care planning

Level of items translate immediately into action levels

It is about the individual not about the individual in care

Consider culture and development

It is about the 'what' not about the 'why'

The 30 day window is to remind us to keep assessments relevant and 'fresh'

## Needs Action Levels:

- 0 = No need for action; no evidence of need
- 1 = Watch need carefully to prevent worsening
- 2 = Act; include in plan of care
- 3 = Act immediately/intensively

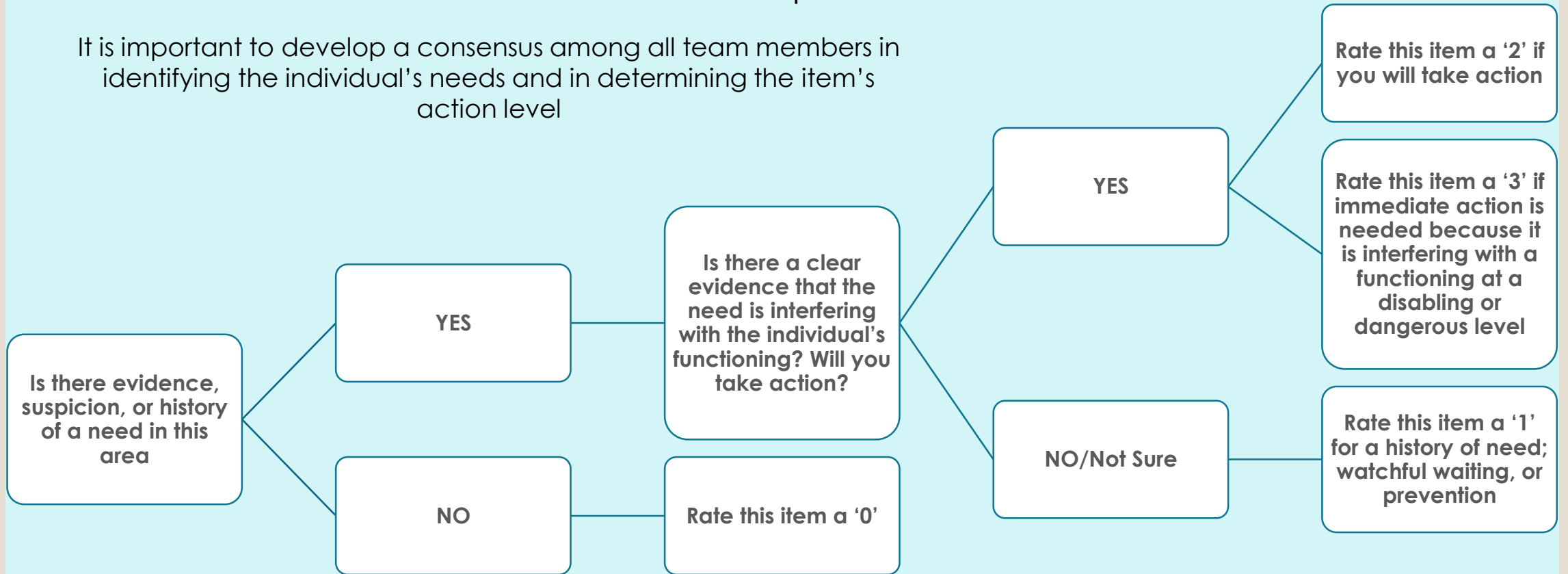
## Strengths Action Levels:

- 0 = Centerpiece strength for plan of care
- 1 = Useful strength for plan of care
- 2 = Identified strength, but needs building
- 3 = No strength identified in this area

# Assessing for Needs

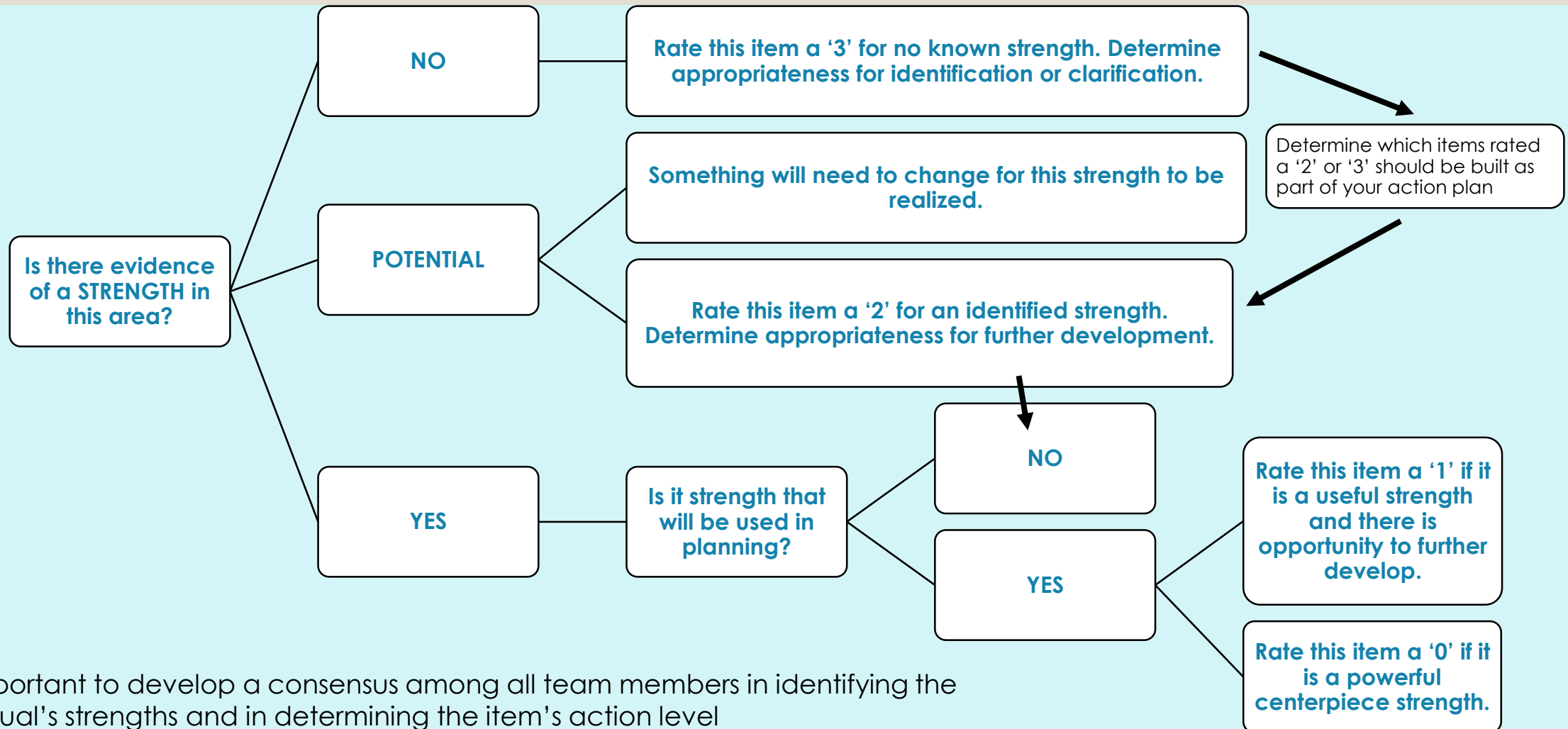
## Decision of whether or not information represents a NEED

It is important to develop a consensus among all team members in identifying the individual's needs and in determining the item's action level



# Assessing for Strengths

Decision of whether or not information represents a STRENGTH



It is important to develop a consensus among all team members in identifying the individual's strengths and in determining the item's action level



# Treatment Planning

Identify the linkage between the ANSA and treatment plan

- Shared vision
- Golden Thread
- Collaboration is interactive and ongoing
- To get from the what to the why
- Transparency and use of data with clients and families
- How does the client/family make sense of these ratings?
- Clinical practices focused on client centered approaches

# Treatment Planning

## START with the 'WHAT'

- describe the circumstance and environment

## CONSIDER the 'WHY' (This is a clinical formulation)

- What are the past trauma, developmental stages and cultural factors?
- Understand what is happening

## DETERMINE the 'HOW' (develop a plan to help)

- Clear need to bundle actionable items into treatment targets
- Help to focus on high impact needs or the most annoying problem.
- Work together to understand the complexity of the needs

# When will it be utilized?

- Yolo County HHSA Mental Health staff are not currently using the ANSA.
- HHSA will implement it as an outcomes measure tool and as a required component of the Steps to Success program.
- If a client is demonstrating poor outcomes with an existing treatment plan, the ANSA will be used as an indicator if service dosage or type of service is off track, and the treatment plan will be revised.

# Thank You

## References:

TCOM, Dr. John Lyons and Dr. April Fernando, UC Davis Extension, Timothy E. Hougen, Ph.D.

## Contact Info:

[kim.narvaez@yolocounty.org](mailto:kim.narvaez@yolocounty.org)

530-666-8513