



YOLO COUNTY: MHSA ANNUAL UPDATE 2019 LOCAL MENTAL HEALTH BOARD

May 20, 2019

Resource Development Associates (RDA)

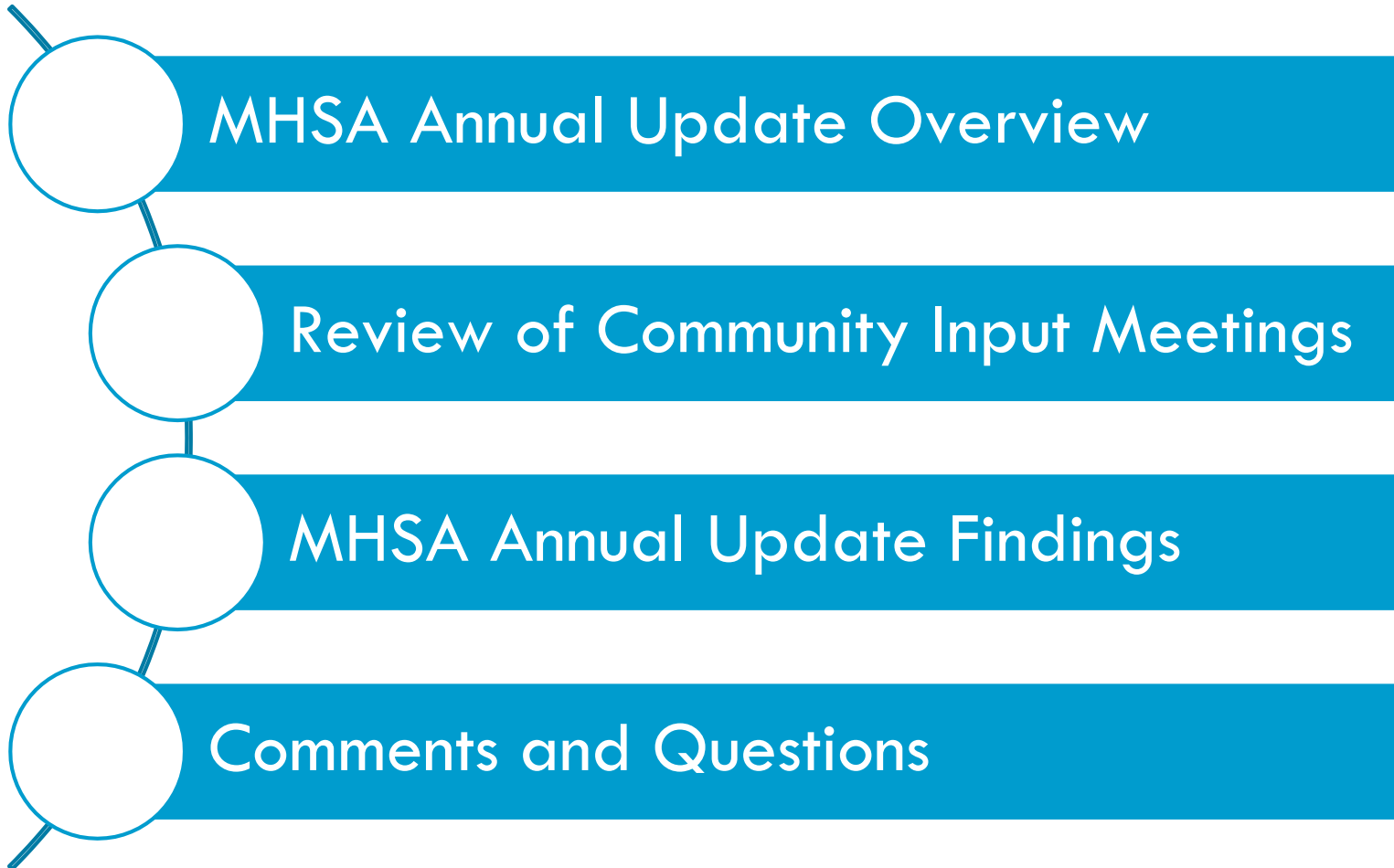
Kira Gunther

Lupe Garcia



Local Mental Health Board

Agenda



3

MHSA Annual Update Overview

MHSA Overview

4

- Mental Health Services Act (Proposition 63) passed November 2, 2004
- 1% income tax on income over \$1 million
- Purpose of MHSA: to expand and transform mental health services in California



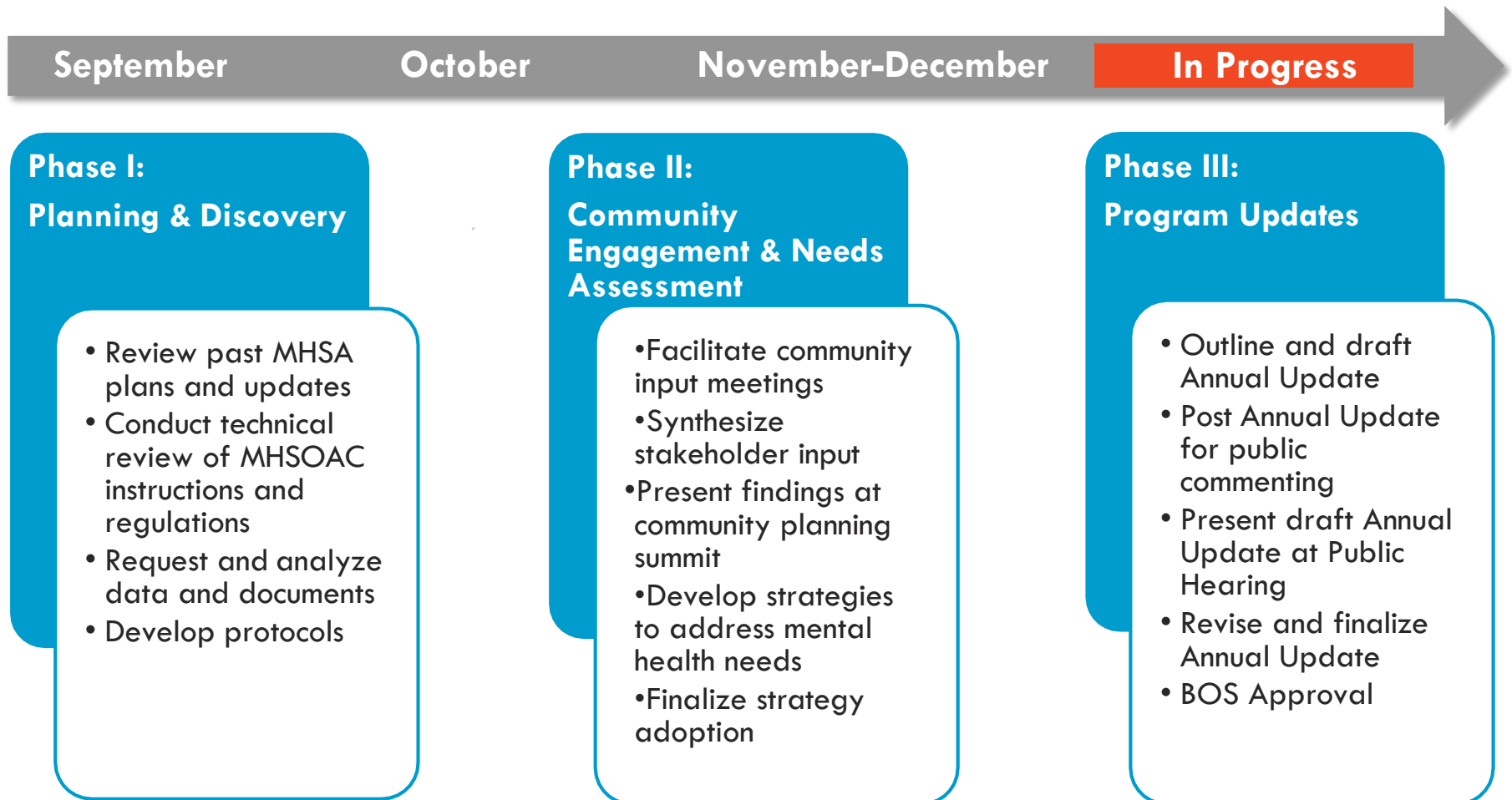
MHSA Annual Update

5

- County mental health programs shall prepare and submit an Annual Update for Mental Health Service Act (MHSA) programs and expenditures.
- Annual Updates must be adopted by the county Board of Supervisors and submitted to the Mental Health Services Oversight and Accountability Commission (MHSOAC) within 30 days after board of supervisor adoption.

Annual Update Activities and Timeline

6



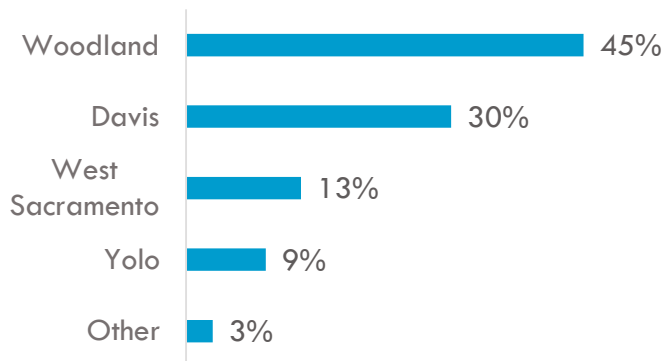
7

Review of Community Input Meetings

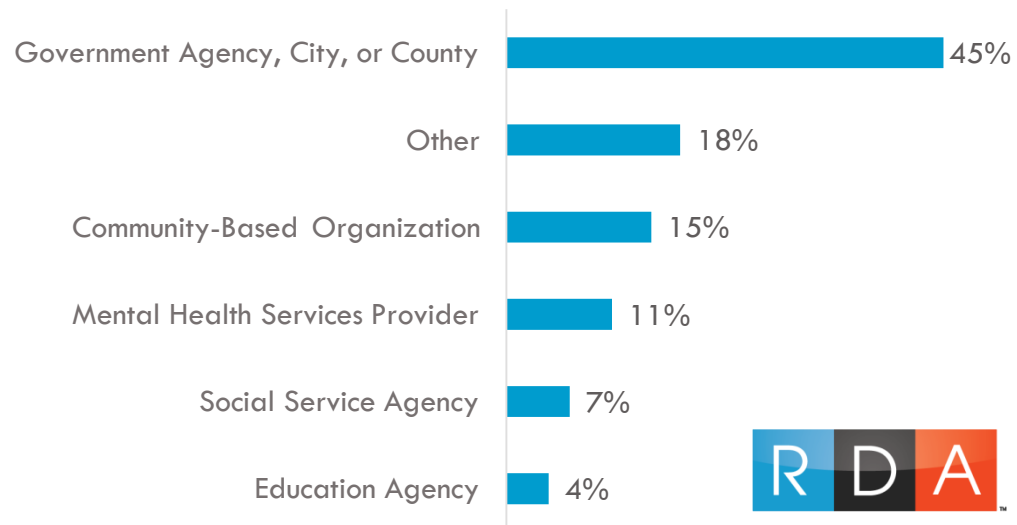
Community Participation

Activity	Date	Total Participants
Community Input Meeting (6)	September 2018	73
Provider-Stakeholder Work Group	September 2018	34
Mental Health Staff Meeting	September 2018	9
Community Planning Summit	October 2018	45
Total		161

City of Residence

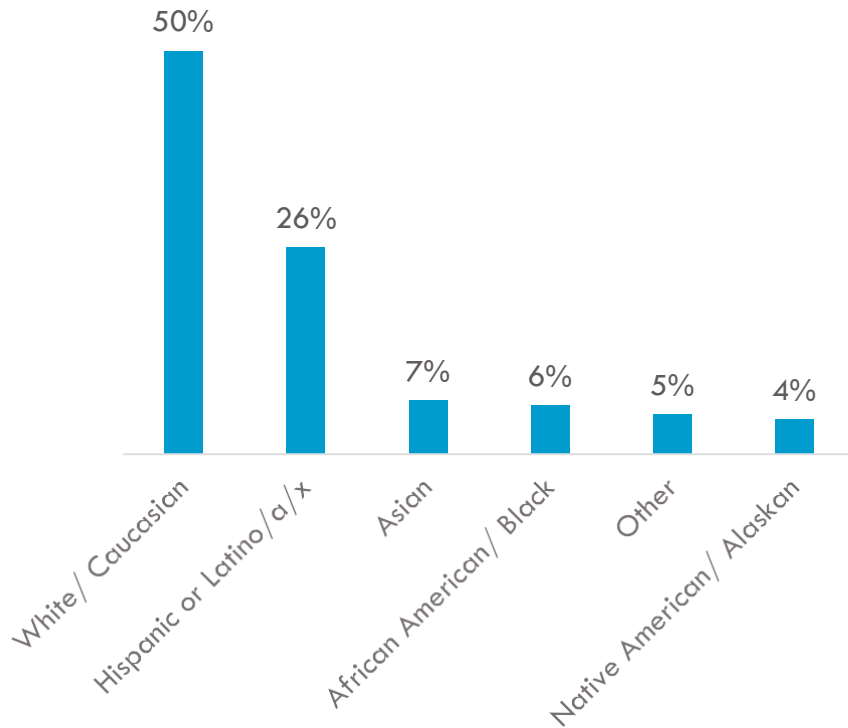


Stakeholder Affiliation



Participant Demographics

Race/Ethnicity



Lived Experience	<ul style="list-style-type: none"> • 12% Consumers • 35% Family Members • 53% No
Sex	<ul style="list-style-type: none"> • 83% female • 12% male
Age	<ul style="list-style-type: none"> • 3% 16-24 years old • 84% 25-59 years old • 13% 60+ years old
Disabilities	<ul style="list-style-type: none"> • 27% reported a disability • 73% reported no disability
Veteran Status	<ul style="list-style-type: none"> • 98% non-veteran status • 2% veteran status
Sexual Orientation	<ul style="list-style-type: none"> • 7% LGBT+ • 91% Heterosexual/straight • 2% Declined to answer

MHSA Annual Update Findings

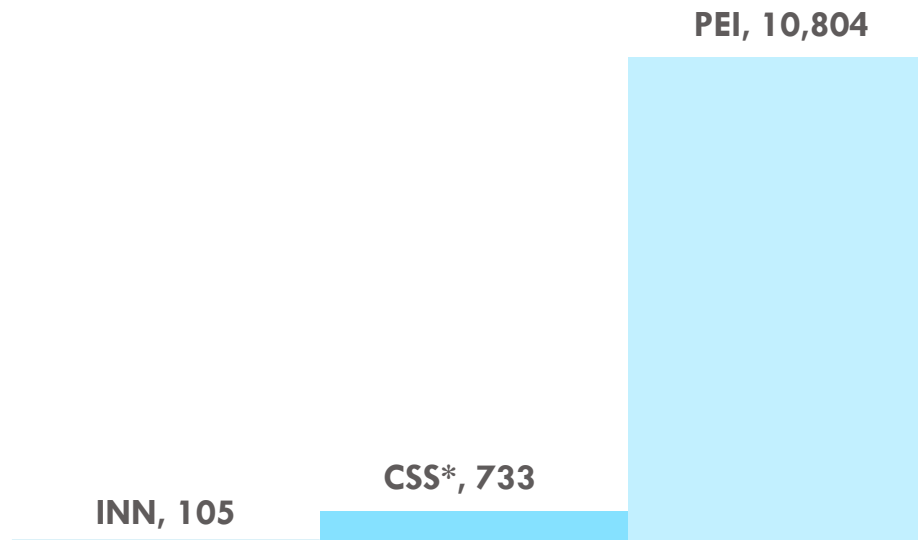
Services Provided in FY 2017-18

11

11,642 people received MHPA-funded services

- 838 identified with Serious Mental Illness

Consumers Served by Component, FY 2017-18



* Excludes Children's Outreach and Engagement Data

Children's System of Care

Identified Needs

- *Screening and Assessment:* No clear processes to screen, assess, and refer children to appropriate level of care
- *Service Needs:*
 - Bullying/cyberbullying, anxiety, and depression as primary concerns
 - Need for more parent and family support

System Planning Based On Needs

- New programs and services to create a more seamless process:
 - Early Childhood Mental Health Access and Linkage Program
 - School Based Access and Linkage Program
 - Mentorship/Strengths-Building Program

Current State

- 500+ children have received screening and 153 children were referred to mental health services
- Access & Linkage programs will continue to work towards improving service linkage for children

Transition Age Youth System of Care

Identified Needs

- *Service Utilization:* TAY wished there were alternative ways to engage in services
- *Social Isolation:* TAY requested need to have more recovery-focused activities and TAY-dedicated space

System Planning Based On Needs

- New programs and services aimed to strengthen service engagement, promote wellness and reduce mental health stigma:
 - TAY Wellness Center
 - TAY Speaker's Bureau
 - TAY Early Intervention Program

Current State

- TAY Wellness Centers opened in late 2018 and have reported success in the number of consumers utilizing services and overall service provision
- The Early Intervention Program is experiencing staffing challenges and is working towards recruiting and retaining a clinician

Adult/Older Adult System of Care

Identified Needs

- *Service Navigation:* There is a desire to further understand service availability and access points
- *Recovery Supports:* The community requested stronger recovery supports such as vocational and educational opportunities
- *Residential Treatment:* There is a need for more discharge, residential, and Board & Care home options

System Planning Based On Needs

- New programs and services aimed to bridge the gap between services and strengthen community and peer services:
 - Community-Based Navigation Drop-in Centers
 - Peer and Family Led Support Services
 - IBHS for Latino Community and Families
 - Adult Residential Treatment Program

Current State

- A Navigation Center is open 3 days per week in the Davis County mental health clinic, and 2 days per week in other community-based locations
- Yolo is increasing City/County partnerships on projects providing vocational opportunities for individuals living homeless
- Yolo is in a permit process with the city of Davis to locate the Adult Residential Treatment Program in a multi-building affordable housing complex
- Yolo completed a Board and Care Study with Innovation funds, supporting statewide efforts to increase mental health-based residential programs

Countywide Initiatives

Identified Needs

- *Cultural Responsiveness:* Stakeholders requested to strengthen the County's cultural competency specifically around LGBT+
- *Crisis Intervention Services:* Community members expressed the need for expanded CIP hours and more proactive services
- *Technological Needs:* There is a need for alternative methods for communication and seeking support

System Planning Based On Needs

- New programs and services to strengthen the behavioral health workforce ability to respond to consumer needs:
 - Cultural Competency/ LGBT+
 - Peer Workforce Development Workgroup
 - Early Signs Project: Crisis Intervention Program Augmentation
 - Social Media/ Application Initiative

Current State

- Yolo routinely collects LGBT+ community demographic data to provide culturally responsive services
- Yolo provides 7 day/week crisis services at the Mental Health Urgent Care, responds to local emergency departments to conduct mental health evaluations, and provides community crisis response for TAY, and at law enforcement request
- Reliable transportation remains a barrier to mental health services access; Yolo is developing a transportation initiative
- HHSA is in strengthening cross-system partnerships specifically with our criminal justice partners

MHSA Funded Programs

Overview of MHSA-Funded Programs & Services

Prevention & Early Intervention (PEI)	Early Signs Project	Community Services & Supports (CSS)	Children's Mental Health Services
	Crisis Intervention Training		Pathways to Independence
	Early Childhood Access & Linkage to Services		Adult Wellness Alternatives
	School Based Access & Linkage to Services		Older Adult Outreach & Assessment
	TAY Wellness Centers		Adult Residential Treatment Program
	School and Community-Based Mentorship Program		Community-based Drop-in Navigation Center
	Senior Peer Counseling	Workforce, Education, Training (WET)	Peer and Family Led Support Services
	Youth Early Intervention/Access and Linkage Program		Mental Health Professional Development
	TAY Speaker's Bureau		Peer Workforce Development Workgroup
	IBHS for Latino Community & Families	Capital Facilities & Technological Needs (CFTN)	Acquisition and Rehabilitation of the Adult Residential Treatment Facility
	Latino Outreach/Mental Health Promotores Program		
	LGBT+ Initiative		
	Mental Health Professional Development	Innovation (INN)	First Responders Initiative
	Clinical Internship Program		
	Peer Workforce Development Workgroup		

What is currently funded for Children?

18

MHSA	Program	Program Description	Provider
PEI	Early Childhood Access & Linkage to Service Program	Implements universal screening and service linkage. Strengthens identification and linkage to services for children and identifies the appropriate level of care.	First Five Yolo
PEI	School and Community-based Mentorship Program	Provides school-based educational presentations about mental health. Creates afterschool mentorship and activity-based resiliency programming.	Victor Community Support Services (Urban) RISE (Rural)
CSS	Children's Mental Health Services	Outreach and engagement to connect children/families to services.	Yolo HHSA
CSS	Children's Mental Health Services	System Development: Services for children with mild to moderate needs.	Turning Point / Communicare
CSS	Children's Mental Health Services	Full Service Partnership: Services for children with the highest level of mental health need.	HHSA
CSS	Children's Mental Health Services	Full Service Partnership: Services for children with the highest level of mental health need.	Turning Point

What is currently funded for TAY?

MHSA	Program	Program Description	Provider
PEI	School-based Access & Linkage to Services	Strengthens identification and linkage to services for youth and young adults and identifies the appropriate level of care.	Victor Community Support Services (Urban) RISE (Rural)
PEI	TAY Wellness Center	Provides activity-based, socialization, and recovery-focused services.	Yolo HHSA & Woodland Community College
PEI	TAY Early Intervention Program	Services for youth that are beginning to develop mood or anxiety-related serious mental illness.	Yolo HHSA
SDR	TAY Speaker's Bureau	Reduces stigma and discrimination through creation of a TAY Speaker's Bureau.	Yolo HHSA
CSS	Pathways to Independence	Outreach and Engagement, System Development, and FSP services at TAY Wellness Centers	Yolo HHSA

What is currently funded for Adults?

	Program	Program Description	Providers
PEI and CSS	Community Based Drop in Navigation Center	Community-based drop-in center provides crisis intervention, assessment, recovery-based socialization, activity-based programming, and case management.	CommuniCare Health Centers
CSS	Adult Wellness: Alternatives SD/FSP	Current adult full service partnership (FSP) program which includes Mental Health Court team clients, and the Wellness Centers with expanded service hours and more formalized programming based in evidence based practices (EBPs).	Yolo HHSA & Turning Point
	ACT/AOT	This refers to the contracted ACT team that serves the highest level of FSP as well as consumers enrolled in AOT.	Yolo HHSA & Turning Point

What is currently funded for Older Adults?

21

	Program	Program Description	Providers
PEI	Wellness Project: Senior Peer Counselor Volunteers	Peer support for older adults at risk of losing their independence.	Citizens Who Care
CSS	Older Adult Outreach and Assessment	Outreach and Engagement: Strategy to help identify adults and older consumers in need of services.	Yolo HHSA
		System Development (SD): Services for older adults with a mild to moderate mental health need.	Yolo HHSA
		Full Service Partnership (FSP): Services for older adults with the highest level of mental health need.	Yolo HHSA



What programs are available across the lifespan?

22

Program Name	Program Description	Providers
Early Signs Project: Crisis Intervention Team (CIT) Training	Trains law enforcement and other first responders to recognize the signs of mental illness when responding to a person experiencing a mental health crisis.	Disability Response
Early Signs Training and Assistance	Trains individuals who have the knowledge and skills to respond to or prevent a mental health crisis in the community.	Yolo HHSA
Suicide Prevention Training	Trains individuals to identify the signs of suicidality and support individuals in crisis with support.	Suicide Prevention of Yolo County
Integrated Behavioral Health Services for Latino Community and Families	Provides culturally responsive services to Latino/Hispanic residents with health issues, mental health illnesses, and/or substance use issues and includes primary care and full-scope behavioral health services to consumers.	CommuniCare Health Centers
Peer and Family Led Support Services	Assists peers and families to understand the signs and symptoms of mental health, promote awareness of mental health resources, develop ways to support an individuals to access needed services.	NAMI Yolo
First Responders Initiative	Has three primary components 1) Multidisciplinary Forensic Team (MDFT) 2) Mental Health Urgent Care (MHUC) and 3) Health Information Exchange (HIE)	HHSA

How is MHSA Supporting your Workforce?

23

	Program	Program Description
PEI	Cultural Competency/ LGBT+ Initiative	Targeted support to improve cultural competency mental health service provision across the system.
WET	Peer Workforce Development Workgroup	Workgroup inclusive of peer staff that strengthens the onboarding, training, and supervision to peer support staff and considers EBPs in peer support model, and works to increase inclusion of peer workforce across the agency.
WET	Mental Health Professional Development	Provides training on emerging and best practices, will expand to include new training for DSM-V, trauma-informed care, motivational interviewing, CBT, and include Gallup's Strengths Finder.

What is currently funded for technology and facilities?

24

Program Name	Program Description
Acquisition and Rehabilitation of the Adult Residential Treatment Facility	Facility to provide a community-based Mental Health residential treatment alternative for adults at risk of needing a higher level of care (pending).

Thank you!

25

Give us your feedback!



Contact Us:

Kira Gunther

kgunther@resourcedevelopment.net

510.694.0137

Lupe Garcia

lgarcia@resourcedevelopment.net

510.371.02520