


# HOMELESSNESS AND HOUSING

Local Mental Health Board

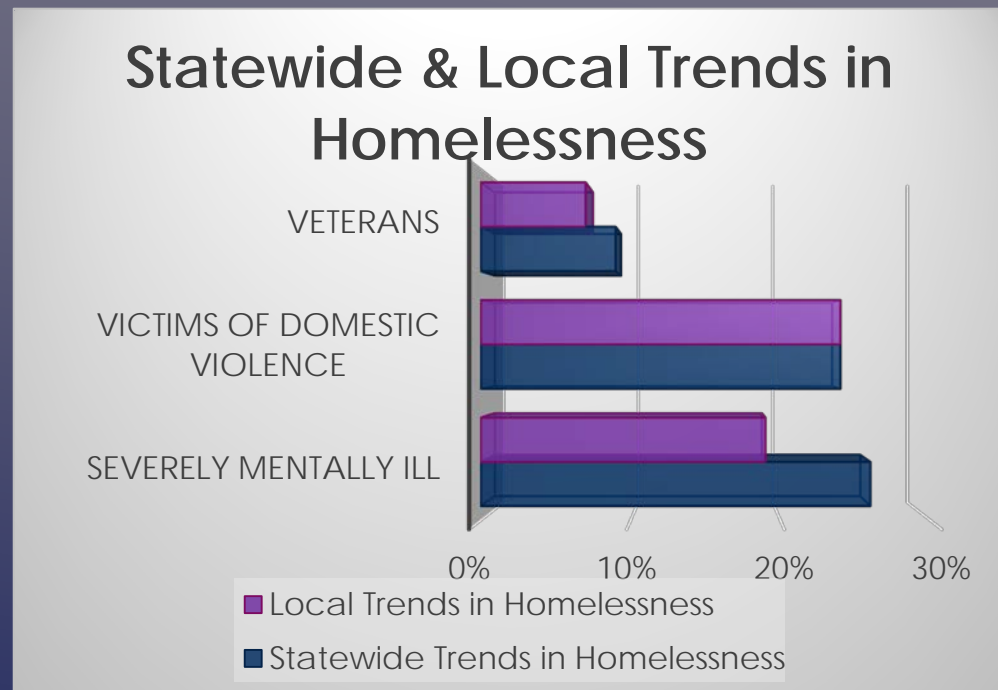
June 24, 2019

# OBJECTIVES

- ▶ Homelessness and Housing Overview
  - ▶ Homelessness Roadmap of Services
  - ▶ Summary of Recent Accomplishments
  - ▶ Discussion of Future Plans
- 

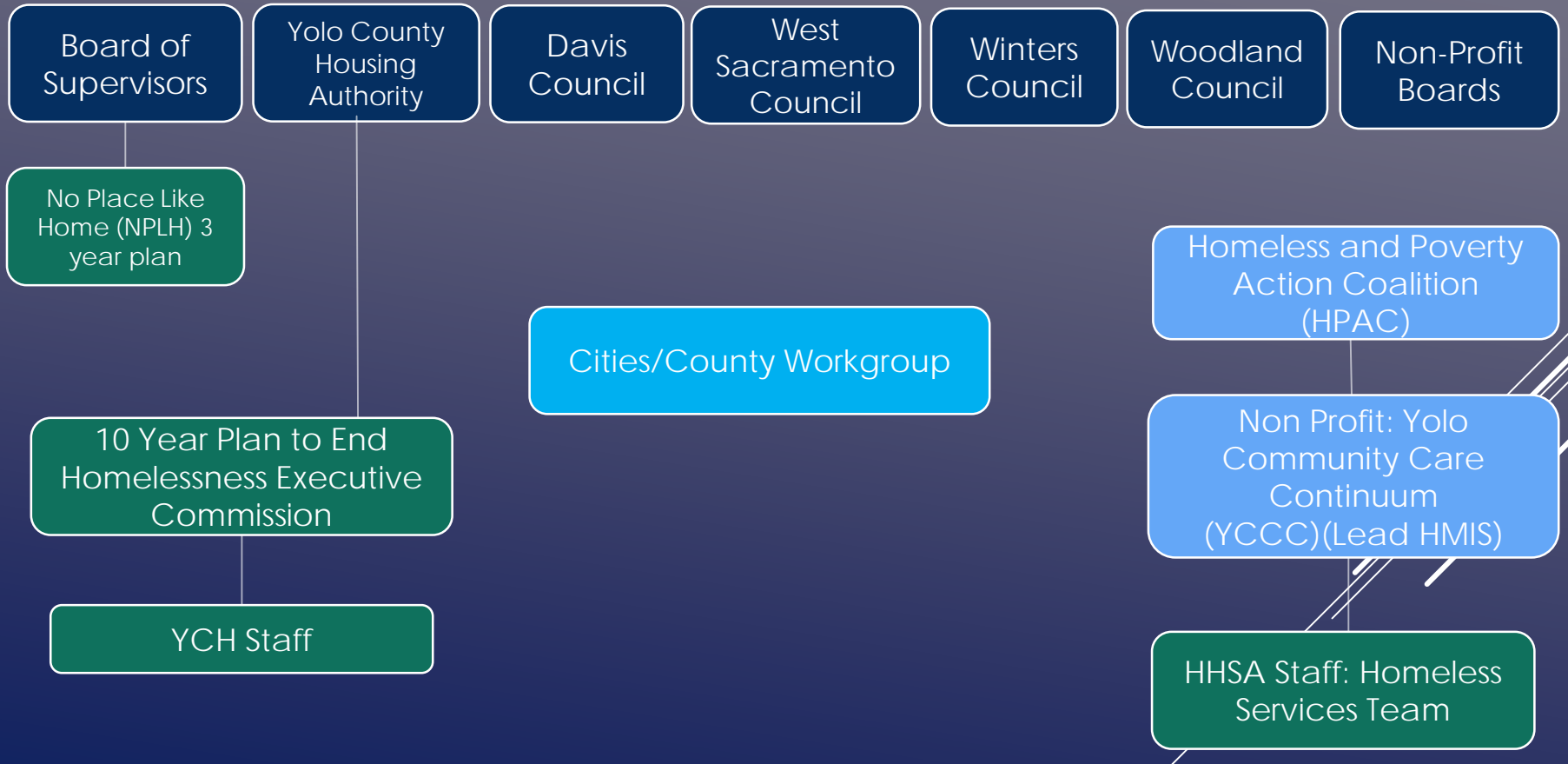
# NATIONAL, STATEWIDE AND LOCAL TRENDS IN HOMELESSNESS

- ▶ Federal data estimates that California's homeless population was at 134,278 in 2017, with 25% of the nation's homeless population residing in California.
- ▶ While national homelessness has *decreased* by 13% since 2010, homelessness in California has *increased* by 9% in the same period.
- ▶ The state's homeless count includes individuals from vulnerable populations. It's estimated that 26% of the homeless population is severely mentally ill, followed by victims of domestic violence at 24% & veterans at roughly 9%.



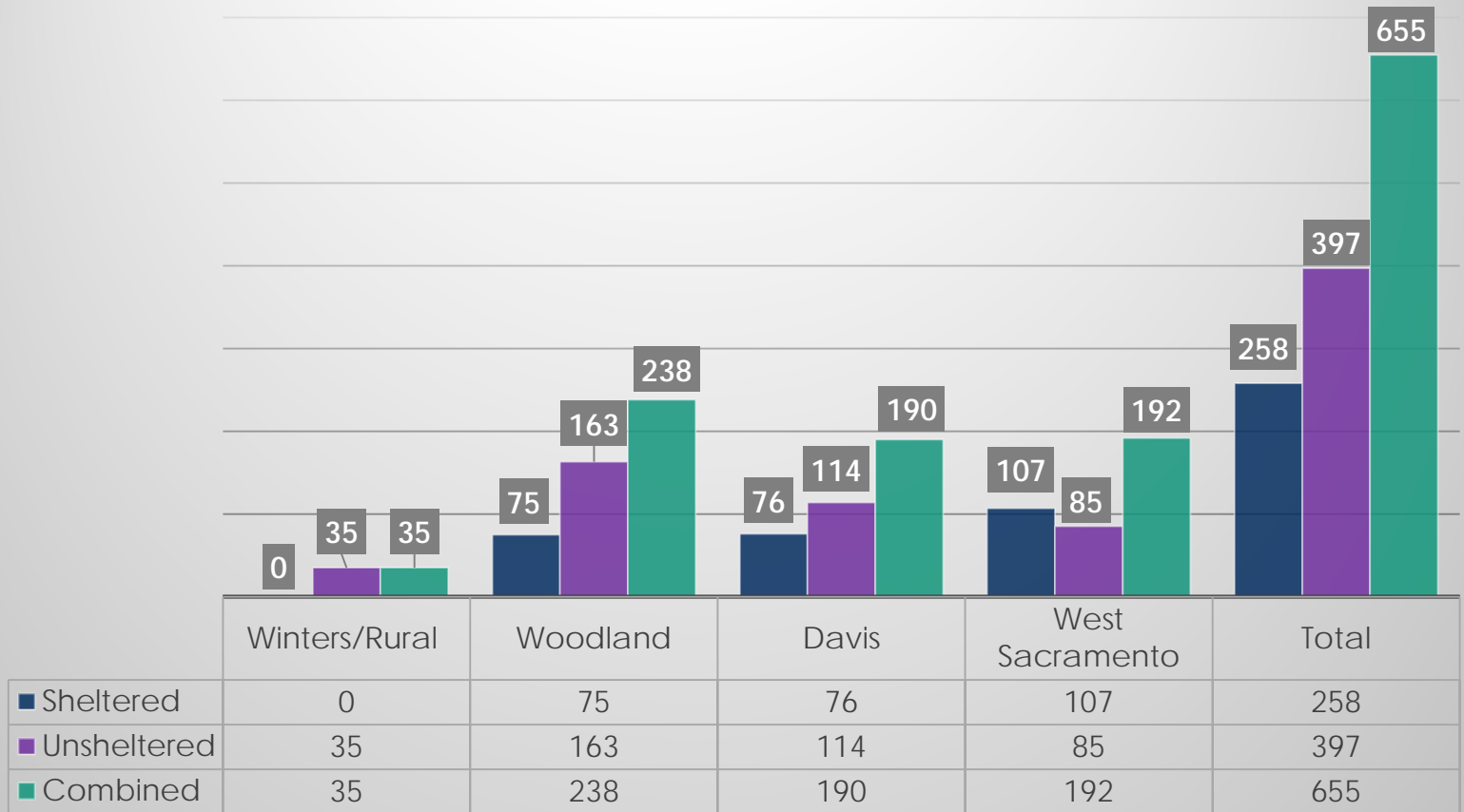
# YOLO COUNTY: CURRENT HOMELESS SYSTEM

## Decision/Policy Makers



# YOLO COUNTY POINT-IN-TIME COUNT 2019

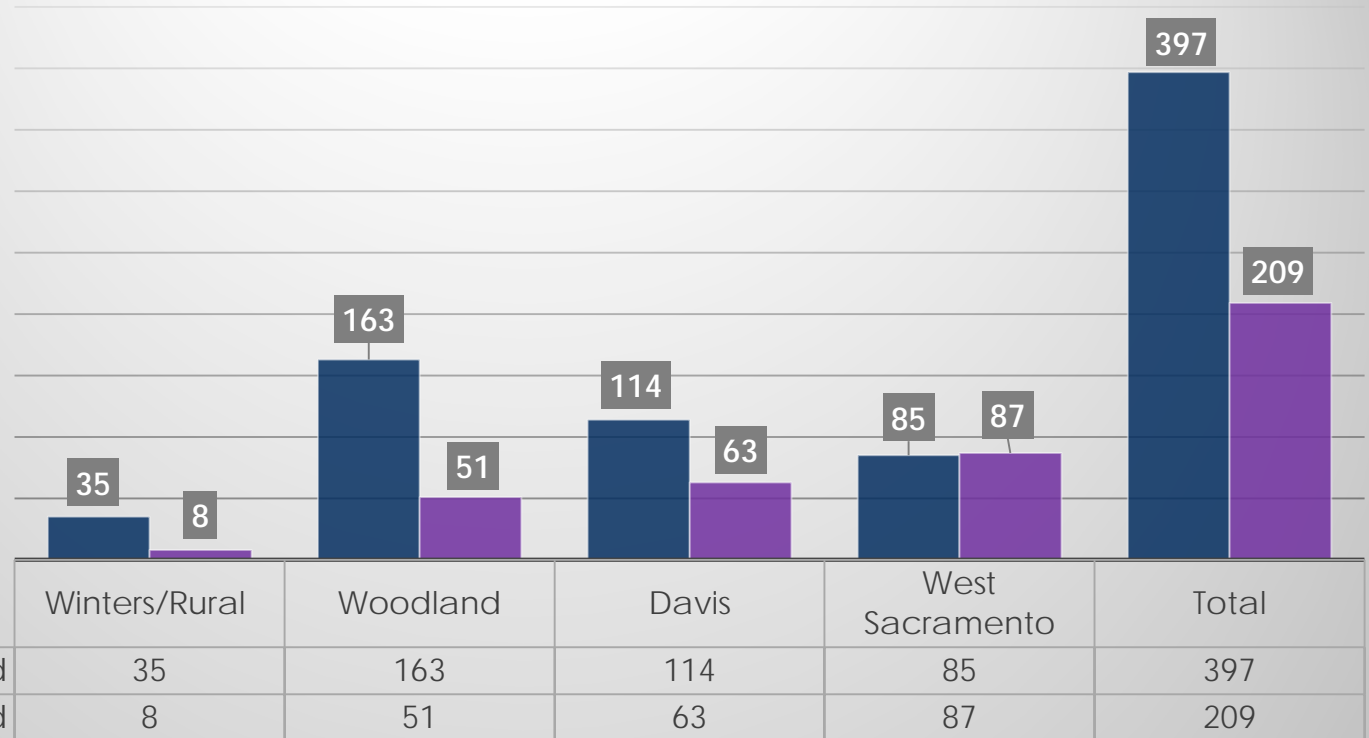
## Distribution by Jurisdiction



■ Sheltered   ■ Unsheltered   ■ Combined

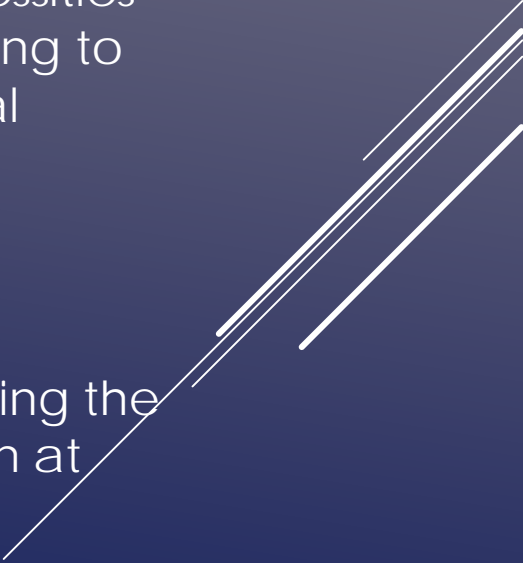
# YOLO COUNTY POINT-IN-TIME COUNT 2017 & 2019 UNSHELTERED

## Unsheltered 2017 & 2019



■ 2019 Unsheltered   ■ 2017 Unsheltered

# TRENDS IN HOMELESSNESS & HOUSING

- ▶ A Coordinated Approach
    - ▶ Community-wide systems to delivering services, housing and needed programs, moving from a collection of individual programs to a community-wide response that is strategic and data driven
  - ▶ Housing First and low/no barrier shelter entry
    - ▶ Guided by the belief that people need basic necessities like food and a place to be indoors before attending to anything less critical, such as sobriety, a clean legal record or getting a source of income
  - ▶ Supportive Services
    - ▶ Across a continuum of housing opportunities, from prevention to permanent supportive housing, offering the right level of care, crisis intervention and motivation at the right time in the right way
- 

# FUNDING

- ▶ Maximizing opportunity
  - ▶ Internal County Team for coordination, pursuing funding, and supporting community when and where it's needed
  - ▶ Contracts with community partner agencies
- ▶ HHSA Homeless Funds *managed* in FY1920
  - ▶ \$13,287,354 (Contracted or Facilitated)





# COMPONENTS OF THE HOMELESSNESS ROADMAP OF SERVICES



- Assistance to preserve a household's current stability, & divert new individuals from entering into homelessness

Target Population: Those who are housed and in crisis



- Short-term shelter with some supportive services

Target Population: Recently homeless



- Short to medium-term rental assistance & minimal supportive services

Target Population: Families; those with low needs



- Medium-term housing & moderate supportive services

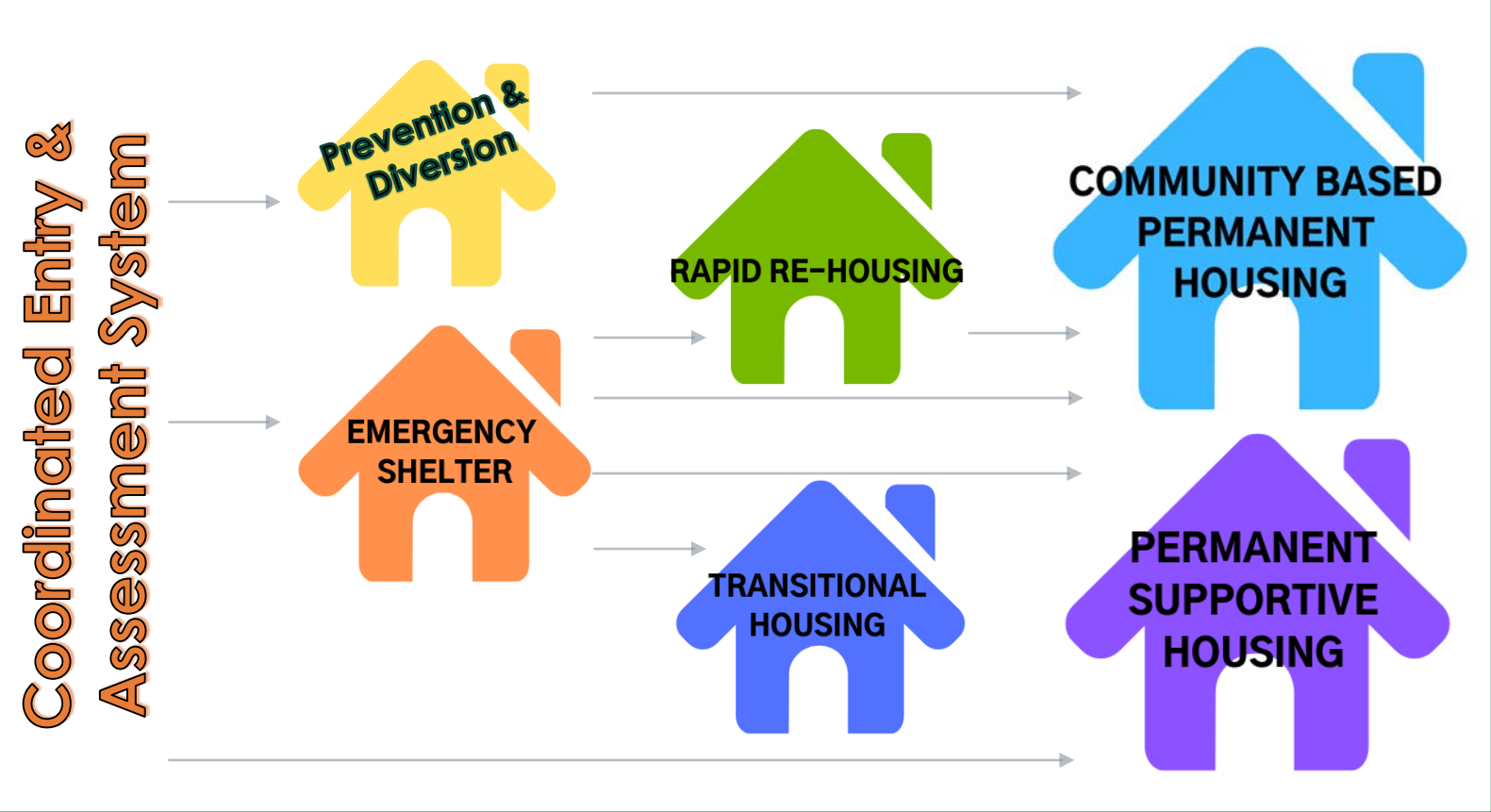
Target Population: Domestic Violence; Substance Abuse; Transition Age Youth (TAY)



- Permanent housing & intensive supportive services to those with chronic disabilities or mental illness

Target Population: Chronically homeless; with chronic disabilities & /or mental illness

# HOMELESSNESS ROADMAP OF SERVICES



# MAPPING YOLO COUNTY'S AFFORDABLE & SUPPORTIVE HOUSING



# RECENT ACCOMPLISHMENTS

## HHSA GOAL #1:

## IMPROVE OUTCOMES FOR CLIENT AND COMMUNITY


- Coordinated Entry
- Multidisciplinary Homelessness Teams
- Low and No Barrier Shelter beds
- Permanent Supportive Housing for individuals living homeless with physical and mental health issues



# RECENT ACCOMPLISHMENTS

## HHSA GOAL #2:

### ENSURE FISCAL HEALTH

- ▶ Homeless Management Information System
    - ▶ Readiness to pursue funding proposals towards assuring ongoing supportive programs
      - ▶ No Place Like Home
      - ▶ Continuum of Care
      - ▶ Homeless and Disability Advocacy Program (HDAP)
      - ▶ Homeless Emergency Aid Program (HEAP)
      - ▶ California Emergency Solutions and Housing (CESH)
      - ▶ Housing for a Healthy California
- 

# RECENT ACCOMPLISHMENTS

## HHSA GOAL #3: STRENGTHEN INTEGRATION


- Inter-departmental grants workgroup
- Cross-branch and cross-team education on the quickly changing local picture of homelessness and available services, supports and housing throughout the County
  - Bringing Families Home, Cal Works Housing Allocation
  - Beamer Permanent Supportive Housing
    - Chronically homeless Transition Age Youth & Adult Mental Health Clients, Cal Works families



# RECENT ACCOMPLISHMENTS

## HHSA GOAL #4:

## DATA INFORMED DECISIONS IN A CULTURE OF QUALITY

- ▶ Infusing Evidence Based Practices
    - ▶ Coordinated Entry
    - ▶ Motivational Interviewing
    - ▶ Cognitive Behavioral Therapy
  - ▶ Results Based Accountability
- 

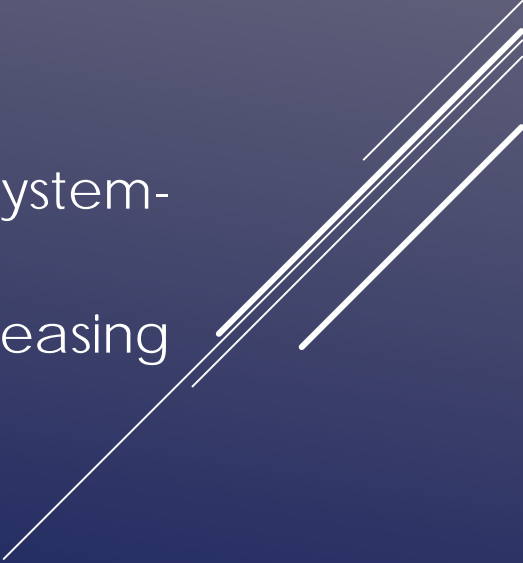
# CHALLENGES

- ▶ Availability of affordable housing inventory to meet demand
    - ▶ Planned Projects
      - ▶ No Place Like Home – Woodland, West Sacramento
      - ▶ Creekside – Davis
      - ▶ Paul's Place – Davis
      - ▶ Spring Lake – Woodland
    - ▶ Dilemmas
      - ▶ Permanent Supportive Housing – 3 to 5 years in development
        - ▶ Funding and staffing for Full Service Partnership
      - ▶ Transitional/Interim options and navigating community concerns
      - ▶ Shelter capacity and effective utilization
  - ▶ Complexities of coordination
- 



# FUTURE PLANS

## 2019 Plan to Address Homelessness:

- ▶ Strengthen the Homeless Crisis Response System, focusing on Prevention
  - ▶ Increase affordable housing options for those experiencing or at risk for experiencing homelessness
  - ▶ Stabilize and maintain physical and behavioral health for those with the highest needs
  - ▶ Examine systems level coordination
    - ▶ Implement a more coordinated county/system-wide governance structure
    - ▶ Target public/private partnerships for increasing housing and supportive services
- 

QUESTIONS?

