

Thank you participating in the YCHC deaccessioning process!

- You will review photographs and collection information for each of the items suggested for deaccession via this **Power Point** presentation.
- You be casting a preliminary vote on the items to retain, remove, or that you are not sure about via the **Survey Monkey Voting Link:**

Voting Link: <https://www.surveymonkey.com/r/V89YKXN>

If you have comments or questions pertaining to a specific item, please note them in the Survey comment section of that item.

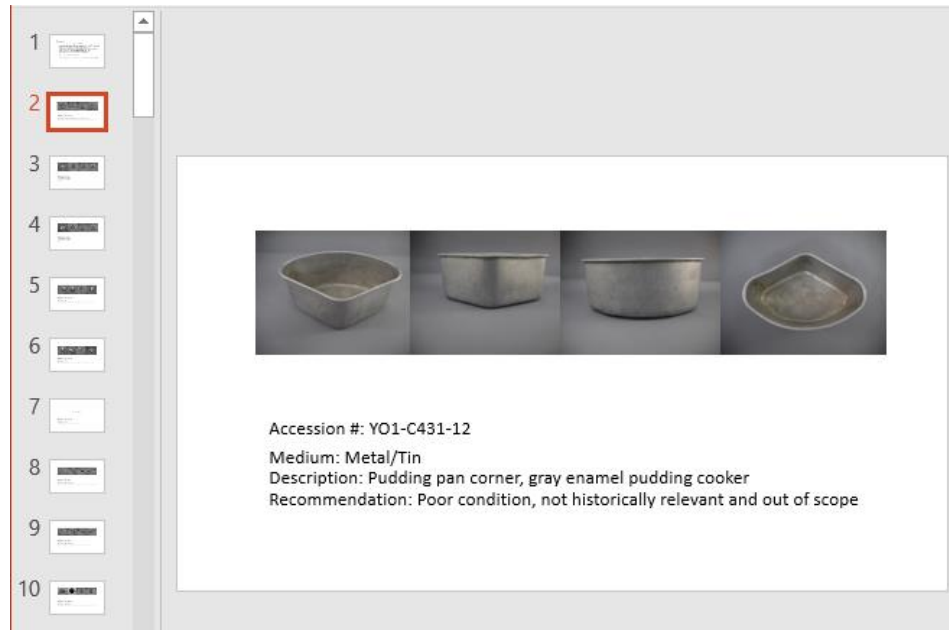
- The information about each piece is taken from the Past Perfect database record.

The screenshot displays the 'Objects Catalog' software interface. The main window shows a record for an object with the following details:

- Collection:** Petherich, Mike
- Object ID:** YO1-C431-02A
- Object Name:** Pan, Muffin
- Accession#:** YO1-C431
- Home Location:** Cab C-S4
- Catalog Date:** 11/08/2005
- Material:** Enamel
- Description:** Gray enamel muffin pan for 6 muffins. Each cup measures 3 1/4" across by 1 1/2" deep.

The interface includes a menu bar with options like Add, Browse, Edit, Spell, End, Query, Delete, Print, Media, and Exit. A sidebar on the left lists various categories such as Archaeology, Art, Geology, History, Natural History, and Custom. The bottom status bar indicates 'Records = 6832' and provides update information for the database.

- As you review each item it is helpful to have one window open with the power point images and one internet browser survey to cast your vote.



Collection Committee July 2019

1. Should we keep item YO1-C431-12?

- Retain
- Remove
- Not Sure

- If you would like to examine an item in person, the curator is able to pull it for the next meeting.
- The next slide starts the power point of items to be reviewed and voted on.



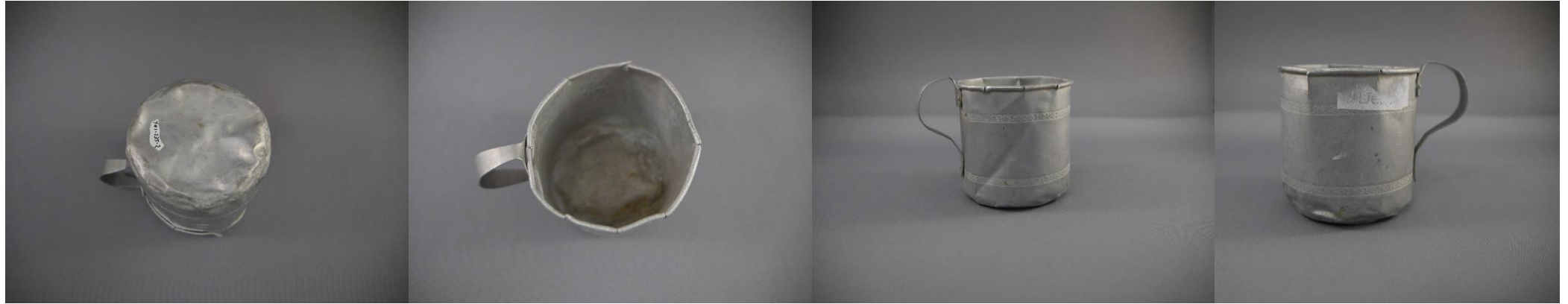
Accession #: YO1-C431-12

Medium: Metal/Tin

Description: Pudding Pan Corner

One section of pudding pan cooker, 7" across long portion, 4 $\frac{3}{4}$ " across short portion. Gray enamel pudding cooker.

Recommendation: Poor condition, not historically relevant and out of scope



Accession #: YO1-235-02

Medium: Metal/Aluminum

Description: Measuring Cup

Straight sided mug shape with attached handle. Roped upper lip with narrow bands of floral ornament.

Recommendation: Poor condition, lacks historical significance, not able to be displayed.



Accession #: YO1-353-03

Medium: Metal/Aluminium

Description: Measuring Cup

Straight sided with handle on one side and a small spout. Raised measuring lines on one side marking fourths and thirds on the other.

Recommendation: Poor condition, lacks historical significance, not able to be displayed.



Accession #: YO1-10i36-02

Medium: Metal/Tin

Description: Metal Mug

Recommendation: Poor condition, corroded metal, not able to be displayed



Accession #: YO1-648-11

Medium: Metal/Tin

Description: Cup with 3" handle, rolling flange at top and bottom

Recommendation: Poor condition, rusted, lacks historically relevance.



Accession #: YO1-C431-09A

Medium: Metal/Aluminium

Description: Funnel

2.5" diameter at top of funnel

Recommendation: Poor condition, not able to be displayed, duplicate.



Accession #: YO1-C431-09B

Medium: Metal/Aluminum

Description: Funnel

2.5" diameter at top of funnel

Recommendation: Poor condition, not able to be displayed, duplicate.



Accession #: YO1-2007-04-04-04A

Medium: Metal

Description: Pie Pan (9 ½" diameter)

Recommendation: Poor Condition, not historically significant, out of collections scope.



Accession #: YO1-2007-04-04-04B

Medium: Metal

Description: Pie Pan (8 ½" diameter)

Recommendation: Poor Condition, not historically significant, out of collections scope.



Accession #: YO1-2007-04-04-03A

Medium: Metal

Description: Pie Tin (Small 6" diameter)

Recommendation: Poor condition, not historically significant, part of set.



Accession #: YO1-2007-04-04-03B

Medium: Metal

Description: Pie Tin (Medium 8" diameter)

Recommendation: Poor Condition, not historically significant, part of set.



Accession #: YO1-443-14

Medium: Metal/Enamel

Description: Pie Tin

Recommendation: Poor Condition, not historically significant, part of set.



Accession #: YO1-443-15

Medium: Metal/Enamel

Description: Ladle

Recommendation: Poor Condition, not historically significant, part of set.



Accession #: YO1-443-18

Medium: Metal/Enamel

Description: Pan/Bowl

Recommendation: Poor Condition, not historically significant, part of set.



Accession #: YO1-C106-03

Medium: Metal/Enamel

Description: Ladle with blue and white enamel

Recommendation: Poor condition, not historically significant, out of collections scope.



Accession #: Y01-C431-04A

Medium: Metal/Aluminum

Description: Ladle

Recommendation: Poor condition, not historically significant.



Accession #: YO1-754-07A

Medium: Metal

Description: Square Pan for poaching eggs

Recommendation: Not historically significant, out of collections scope.



Accession #: YO1-754-07B

Medium: Metal

Description: Square Pan for poaching eggs

Recommendation: Not historically significant, out of collections scope.



Accession #: YO1-754-07C

Medium: Metal

Description: Egg holder for poaching eggs

Recommendation: Not historically significant, out of collections scope.



Accession #: YO1-586-3A (Base) YO1-586-3B (Lid)

Medium: Metal/Wood

Description: Kettle

Recommendation: Poor condition, duplicate, part of suggested for deaccessioned set.



Accession #: YO1-C431-02A

Medium: Metal/Enamel

Description: Muffin Pan

Gray enamel muffin pan for six muffins, each cup measures 3 ¼" across and 1 ½" deep.

Recommendation: Poor condition, lacks historical relevance and out of scope of collection.



Accession #: YO1-C431-02B

Medium: Metal/ Aluminum / Enamel

Description: Muffin Pan

Gray enamel muffin pan for eight muffins, each cup measures 3" across and 1" deep.

Recommendation: Lacks historical relevance and out of scope of collection.



Accession #: YO1-043-05

Medium: Metal/Cast Iron

Description: Waffle Iron "Griswald" 1908

Waffle iron with handle in two parts with ventral rod ending in ring and outer rod spiraled around rod. Outer section of round waffle part has two concentric circles in middle.

Recommendation: Poor condition, duplicate, better example in collection.

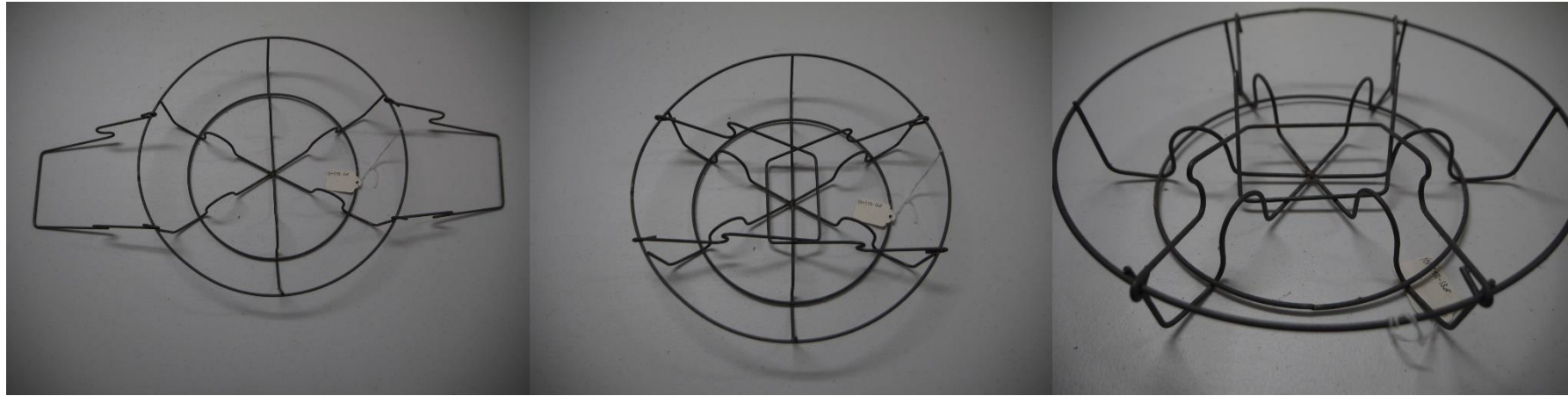


Accession #: YO1-C431-07

Medium: Metal/Enamel

Description: Grey enamel basin used in the kitchen

Recommendation: Poor condition, not relevant to collection, not historically significant and out of scope of collection.



Accession #: YO1-C431-13B

Medium: Metal

Description: Canning rack for pot to hold and lift jars in kettle

Recommendation: Poor condition, not relevant to collection, not historically significant and out of scope of collection.



Accession #: YO1-464-13 (knife case holder) 02 through 13 (knives)

Medium: Metal/Silver/Plastic

Description: Knife case with knives with plastic handles wrapped in flannel holder

Recommendation: Poor condition (canister deteriorating), hazardous materials (bait expired), out of collections scope, natural materials which pose a threat to other collection items.



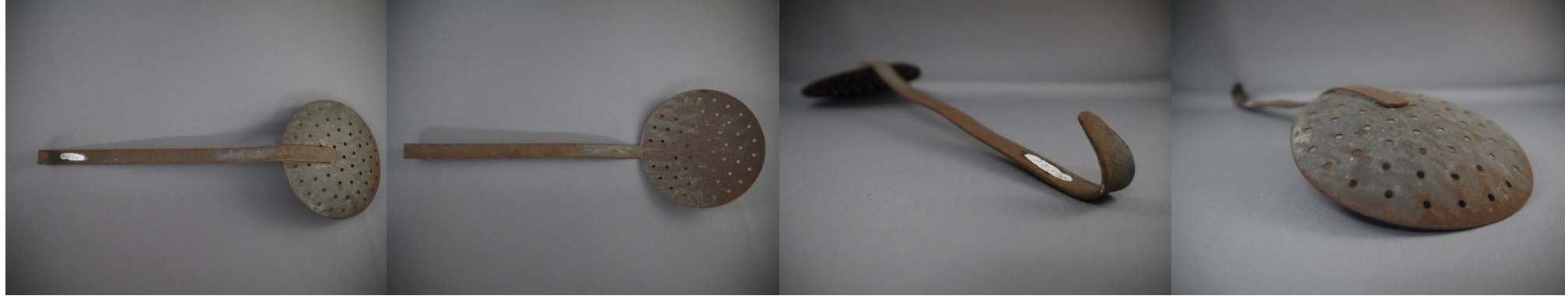
Accession #: YO1-072-04

Medium: Metal/Wood

Description: Bread Knife

Serrated blade with wooden handle

Recommendation: Poor condition (handle cracked), lacks historical significance.



Accession #: YO1-C431-10

Medium: Metal

Description: Metal spoon with straining holes

Skimmer with 9" handle

Recommendation: Poor condition, corroded metal, not able to be displayed, duplicate



Accession #: Y01-10x52-02 C - Lid

Medium: Metal/Silver

Description: Flower Bowl Lid

Reed and Barton silverplate, 3 pieces, bowl, stem, holder and lid.

Recommendation: Poor condition, not historically significant, out of collections scope, not complete set.



Accession #: YO1-C271-03

Medium: Metal

Description: Bowl/Decorative

5" diameter, 2" height, animal frieze, flanged rim.

Recommendation: Poor condition, not historically significant.



Accession #: YO1-10x43-03 A /B/ C/ D

Medium: Metal/Sterling Silver

Description: Candlesticks (4) Weighted

Recommendation: Two are tarnished, not historically significant, lacks documentation and not able to be dated.



Accession #: YO1-714-05

Medium: Straw fibers

Description: Handheld scrubbing brush/Chinese reed scrubber

Recommendation: Lacks historical relevance, not able to be dated.



Accession #: YO1-569-23

Medium: Metal/Steel

Description: File for horseshoes

Recommendation: Poor condition, duplicate without manufacturing stamp



Accession #: YO1-569-24

Medium: Metal/Steel

Description: File for horseshoes

Recommendation: Poor condition, corroded metal, duplicate



Accession #: YO1-C274-38A

Medium: Metal/Iron

Description: Crescent Wrench

Recommendation: Poor condition, duplicate of another set of wrenches, lacks significant or distinct markings.



Accession #: YO1-C274-38C

Medium: Metal/Iron

Description: Crescent Wrench

Recommendation: Poor condition, duplicate of another set of wrenches, lacks significant or distinct markings.



Accession #: YO1-C274-38D

Medium: Metal/Iron

Description: Crescent Wrench

Recommendation: Poor condition, duplicate of another set of wrenches, lacks significant or distinct markings.



Accession #: YO1-C274-38E

Medium: Metal/Iron

Description: Crescent Wrench

Recommendation: Poor condition, duplicate of another set of wrenches, lacks significant or distinct markings.



Accession #: YO1-C274-38F

Medium: Metal/Iron

Description: Crescent Wrench

Recommendation: Poor condition, duplicate of another set of wrenches, lacks significant or distinct markings.



Accession #: YO1-C274-38G

Medium: Metal/Iron

Description: Crescent Wrench

Recommendation: Poor condition, duplicate of another set of wrenches, lacks significant or distinct markings.



Accession #: YO1-C274-38H

Medium: Metal/Iron

Description: Crescent Wrench

Recommendation: Poor condition, duplicate of another set of wrenches, lacks significant or distinct markings.



Accession #: YO1-C274-381

Medium: Metal

Description: Crescent Wrench

Recommendation: Poor condition, duplicate



Accession #: YO1-C274-38J

Medium: Metal

Description: Crescent Wrench

Recommendation: Poor condition, duplicate



Accession #: YO1-C274-38K

Medium: Metal

Description: Crescent Wrench

Recommendation: Poor condition, duplicate



Accession #: Y01-895-42

Medium: Metal/Forged Steel

Description: Wrench/Crescent Wrench 11" length

Recommendation: Poor condition, duplicate of crescent wrench type.



Accession #: YO1-829-3A

Medium: Metal/Iron

Description: Wrench (9")

Recommendation: Poor condition, duplicate



Accession #: YO1-C226-01

Medium: Metal/Iron

Description: Adjustable Crescent Style Wrench

Recommendation: Duplicate, rust in interior



Accession #: YO1-661-47

Medium: Metal

Description: Wrench/Pipe Wrench (Trimo14 1889-97)

Recommendation: Poor Condition, leather handle deteriorating, duplicate.



Accession #: YO1-829-04

Medium: Metal

Description: Adjustable Wrench (Fairmount Cleve.)

Recommendation: Poor Condition, duplicate.



Accession #: YO1-2006.08.03-011

Medium: Metal/Iron

Description: Knife/ Draw knife

Recommendation: Poor condition, rusted, not able to be displayed, not able to be opened.



Accession #: YO1-919-14

Medium: Metal/Wood

Description: Pump Handel, Fuel for 55 gallon barrel

Recommendation: Poor condition, not complete set, not historically significant and out of scope of collection.



Accession #: YO1-595-05

Medium: Metal

Description: Hook/Tack Equipment

Recommendation: Poor condition, not complete and not able to be displayed because part of a whole.



Accession #: YO1-569-04

Medium: Metal

Description: Small Animal Trap

Recommendation: Poor condition, contemporary and out of collections scope.



Accession #: YO1-569-09

Medium: Metal

Description: Small Animal Trap

Recommendation: Poor condition, has broken handle and chain, duplicate.



Accession #: YO1-919-16

Medium: Metal

Description: Bridle Horse Bit/Tack Equipment

Recommendation: Poor condition, rusty throughout, loose joints, duplicate.



Accession #: YO1-025-019-01

Medium: Metal

Description: Equine Bit/Tack Equipment

Recommendation: Duplicate, better examples within the collection



Accession #: YO1-595-06

Medium: Metal

Description: Horseshoe/Tack Equipment

Recommendation: Poor condition, rusted, bent nails sticking out, duplicate



Accession #: YO1-661-38

Medium: Metal

Description: Hog Scraper

Recommendation: Poor Condition, dented, rusted, duplicate.



Accession #: YO1-C340-01

Medium: Metal

Description: Animal Clippers

Recommendation: Poor condition, out of collection scope.



Accession #: YO1-265-02

Medium: Metal/Steel

Description: Fabric Scissors

History: Donor, June Hogaboom, says his mother's brother worked as a tailor about 1900 and these were his shears.

Recommendation: Poor condition, duplicate.



Accession #: YO1-275-10

Medium: Metal/Steel

Description: Shears

Steel, trowel, shanked, single bow.

Recommendation: Poor condition, duplicate.



Accession #: YO1-936-20

Medium: Metal/Steel

Description: Plant Shears/Hedge Shears

Recommendation: Poor condition, duplicate.



Accession #: YO1-895-27

Medium: Metal

Description: Tree Shears/Pruning Shears

Recommendation: Poor condition, duplicate.



Accession #: YO1-919-01

Medium: Metal

Description: Ax (Top)

Recommendation: Poor Condition, rust, partial object, cannot display.



Accession #: YO1-829-01

Medium: Metal

Description: Jack (Spreader for tires)

Recommendation: Poor Condition, rust and white deposits, not able to be displayed.



Accession #: YO1-100-45

Medium: Metal/Wood

Description: Hatchet/Plane/Wooden Handle

Recommendation: Part of piece, not able to be displayed.



Accession #: YO1-C030-01

Medium: Metal/Plastic

Description: Machete (I-L Martillo No. 37 Fabricados...Mexico)

Used to top sugar beets, 23" long

Recommendation: Not relevant to collection scope



Accession #: YO1-569-17

Medium: Metal

Description: Lever

Long metal tubular pieces with a 1 ¾" square section on one end

Recommendation: Poor Condition, partial object, cannot display, lacks historical significance.



Accession #: YO1-C201-13

Medium: Metal/Steel

Description: Singer Sewing Machine Parts with metal case

History: Purchased by Mrs. John Issacs (Sylvia Issacs) in 1915-1916. Mrs. Issacs had the electric motor put in the machine, which may have been manufactured to operate manually.

Recommendation: Poor Condition, rusted box, outside of collections scope, not a complete set, some pieces missing.



Accession #: YO1-140-15

Medium: Metal

Description: Oil can for filling kerosene

Recommendation: Poor condition, not able to be displayed, not historically relevant.



Accession #: YO1-978-04

Medium: Metal

Description: Vulcanizer Tool, Pat'd March 21 1905

Recommendation: Poor condition, not complete piece, lacks historical relevance.



Accession #: YO1-834-09

Medium: Metal/Wood

Description: Trowel/ Hand tool, hand made for cement work

Recommendation: Poor condition (rust), duplicate.



Accession #: Y01-C016-15

Medium: Metal/Wood

Description: Trowel/ Hand tool for cement work

Recommendation: Poor condition (rust), duplicate, not historically relevant.



Accession #: YO1-569-05 / 06 / 07

Medium: Metal/Glass/Cardboard Canisters

Description: Animal Bait Bottle– Raccoon, Beaver, Mink

Recommendation: Poor condition (canister deteriorating), hazardous materials (bait expired), natural materials which pose a threat to other collection items.



Accession #: YO1-2006.08.03-08

Medium: Metal/Iron

Description: Wrench "T" "18"

Recommendation: Poor condition (rust), partial and not complete set, no historical relevance.



Accession #: YO1-2006.08.03-09

Medium: Metal/Iron

Description: Wrench "T" "11"

Recommendation: Poor condition (rust), partial and not complete set, no historical relevance.



Accession #: YO1-924-01Q

Medium: Metal/Wood

Description: Screwdriver or chisel (flathead with wooden handle)

Recommendation: Poor condition (wood deteriorating)



Accession #: YO1-063-06-08

Medium: Metal

Description: Compressor (horseshoeing tool)

Recommendation: Poor condition



Accession #: YO1-063-06F

Medium: Metal

Description: Ratchet/Wrench

Recommendation: Poor condition, duplicate

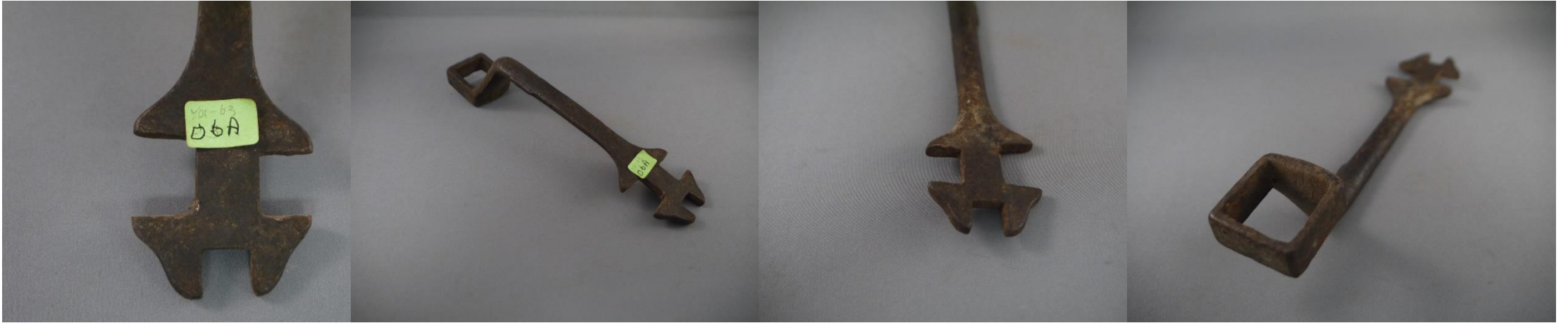


Accession #: YO1-063-07

Medium: Metal/Wood

Description: Hammer

Recommendation: Poor condition, duplicate



Accession #: YO1-063-06A

Medium: Metal

Description: Wrench

Recommendation: Poor condition, duplicate



Accession #: YO1-063-06B

Medium: Metal

Description: Wrench

Recommendation: Poor condition, duplicate



Accession #: YO1-C004-16

Medium: Metal

Description: Reamer/Drill Bit, metal working reamer

History: Used by the donor's, Skip Quinlan's, father who worked as an electrical contractor between 1920 and 1950 in Huntington West Virginia.

Recommendation: Poor condition (rust), partial and not complete set.



Accession #: YO1-978-10

Medium: Metal

Description: Reamer/Drill Bit

Recommendation: Poor condition, duplicate



Accession #: Y01-978-09

Medium: Metal

Description: Wrench, Fixed Jaw

Recommendation: Poor condition, duplicate



Accession #: YO1-936-14

Medium: Metal

Description: Chisel

Recommendation: Poor condition, duplicate



Accession #: Y01-936-25

Medium: Metal

Description: Saddler's Punch to set cooper rivets used to make leather harnesses

Recommendation: Poor condition, duplicate



Accession #: YO1-936-26

Medium: Metal

Description: Wire Gauge/Punch to set cooper rivets used to make leather harnesses

Recommendation: Poor condition, duplicate, partial, not complete



Accession #: YO1-936-16

Medium: Metal

Description: Tack Equipment Tool, wire splicer for fence

Recommendation: Poor condition, duplicate



Accession #: Y01-936-05

Medium: Metal

Description: Tack Equipment/Hoof Pick

Recommendation: Poor condition, duplicate



Accession #: Y01-936-17

Medium: Metal

Description: Grease Cup to lubricate machinery

Recommendation: Poor condition, duplicate



Accession #: YO1-965-02

Medium: Metal

Description: Metal Can – Whizol Half Pint for greasing lawn mowers, sewing machines and bicycles

Recommendation: Poor condition, hazardous material, out of collections scope.



Accession #: YO1-661-53

Medium: Metal

Description: Hoe top, without handle

Recommendation: Poor condition, partial, not complete

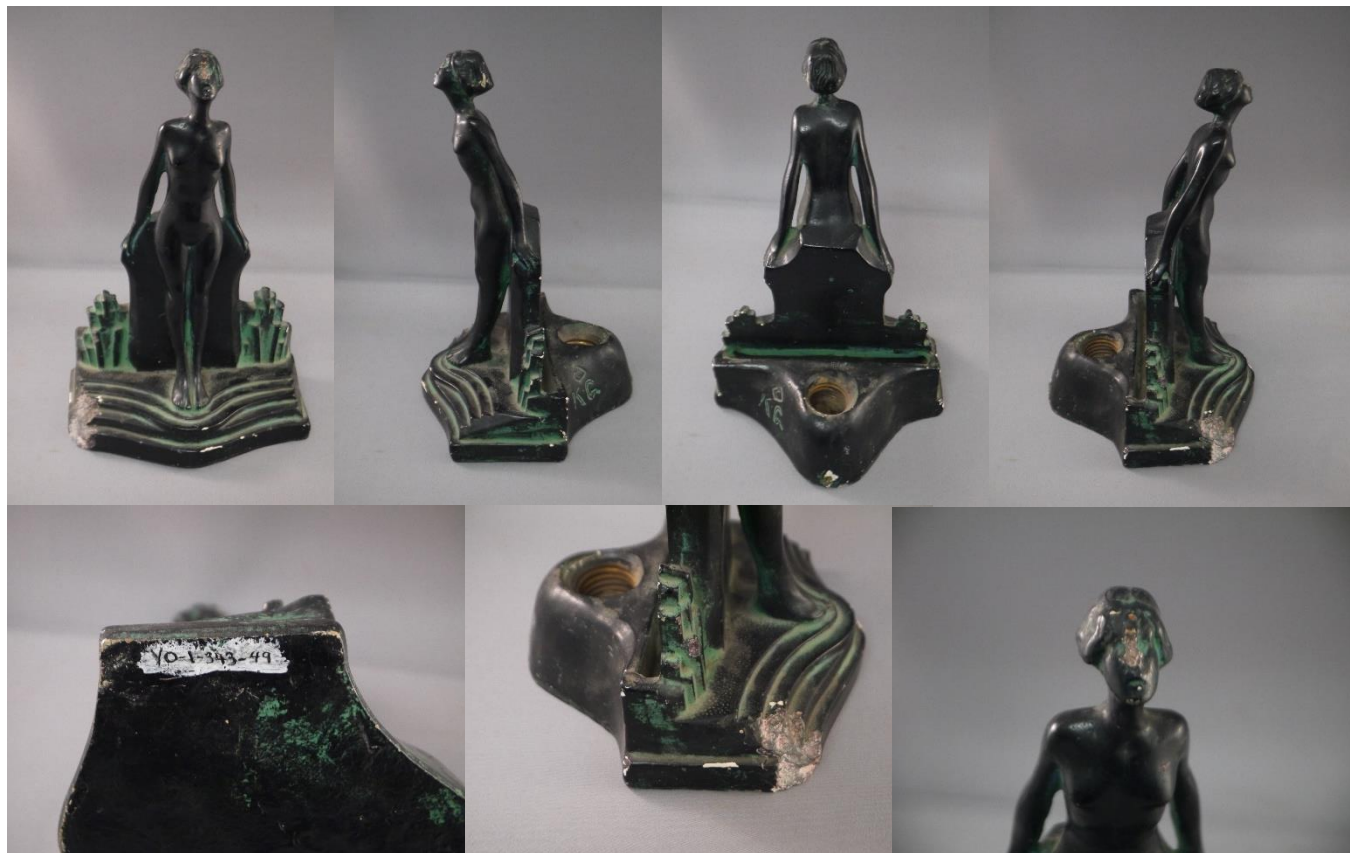


Accession #: YO1-809-06

Medium: Metal/Wood

Description: Hand crank drill

Recommendation: Poor condition, duplicate



Accession #: YO1-343-49

Medium: Plaster

Description: Lamp/Statue (Art Deco lamp with female figure)

Plaster painted black with green wipé. Initials KG on back light area. Slot in back probably glass insert.
Recommendation: Poor condition, out of collection scope, not able to be displayed because of missing pieces and electric cord.