

Thank you participating in the YCHC deaccessioning process!

- You will review photographs and collection information for each of the items suggested for deaccession via this **Power Point PDF**.
- You will be casting a preliminary vote on the items to retain, remove, or that you are not sure about via the **Survey Monkey Voting Link**.
<https://www.surveymonkey.com/r/B7KL3M9>
- This Collections Power Point is for items to be reviewed before the **August 2019** Collections Committee meeting on *Wednesday, August 14th at 5:30pm*.

- As you review each item it is helpful to have one window open with the power point images and one internet browser survey to cast your vote.

The screenshot shows the 'Objects Catalog' application window. The main record for 'Pan, Muffin' (Accession # Y01-C431-12) is displayed. The 'Description' field contains: 'Gray enamel muffin pan for 6 muffins. Each cup measures 3 1/4" across by 1 1/2" deep.' The 'Material' is listed as 'Enamel'. To the right, a presentation slide shows four images of the muffin pan. Below the images, the text reads: 'Accession #: Y01-C431-12', 'Medium: Metal/Tin', 'Description: Pudding pan corner, gray enamel pudding cooker', and 'Recommendation: Poor condition, not historically relevant and out of scope'. A survey question '1. Should we keep item Y01-C431-12?' is followed by three radio button options: 'Retain', 'Remove', and 'Not Sure'.

- The information about each piece is taken from the Past Perfect database record.
- If you would like to examine an item in person, the curator is able to pull it for the next meeting.
- The next slide starts the power point of items to be reviewed and voted on.



Accession #: YO1-100-35

Medium: Metal

Description: Spoon Drill Bit

Recommendation: Poor condition, duplicate

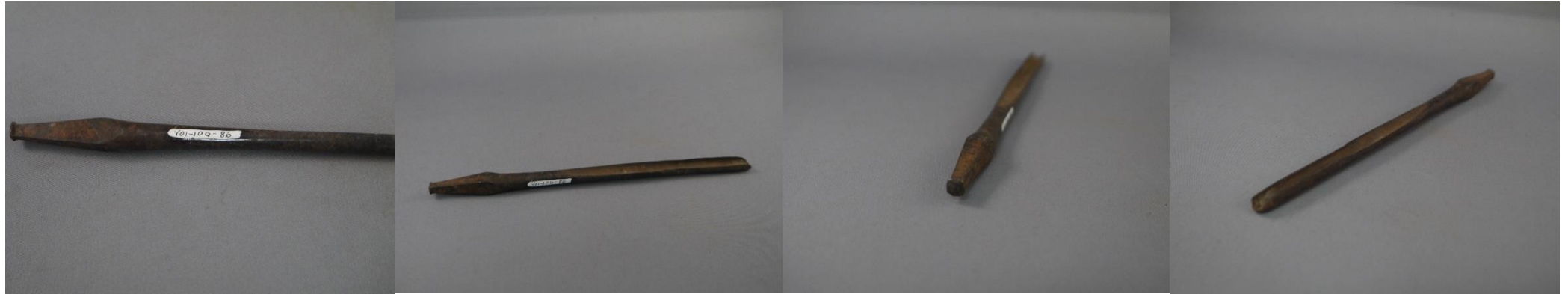


Accession #: YO1-100-36

Medium: Metal

Description: Spoon Drill Bit

Recommendation: Poor condition, duplicate



Accession #: YO1-100-86

Medium: Metal

Description: Gouge, used in brace and drill bit

Recommendation: Poor condition, duplicate



Accession #: YO1-100-87

Medium: Metal

Description: Gouge, used in brace and drill bit

Recommendation: Poor condition, duplicate



Accession #: YO1-C197-01

Medium: Metal/Forged Steel

Description: Drill Bit 6"

Recommendation: Poor condition, duplicate, partial and not complete set



Accession #: YO1-C197-02

Medium: Metal/Forged Steel

Description: Drill Bit

Recommendation: Poor condition, duplicate, partial and not complete set



Accession #: YO1-C197-03

Medium: Metal/Forged Steel

Description: Drill Bit 8"

Recommendation: Poor condition, duplicate, partial and not complete set



Accession #: YO1-C197-04

Medium: Metal/Forged Steel

Description: Drill Bit 8"

Recommendation: Poor condition, duplicate, partial and not complete set



Accession #: YO1-C197-05

Medium: Metal/Forged Steel

Description: Drill Bit 14"

Recommendation: Poor condition, duplicate, partial and not complete set



Accession #: YO1-C197-06

Medium: Metal

Description: Drill Bit

Recommendation: Poor condition, duplicate, partial and not complete set



Accession #: YO1-C197-07

Medium: Metal/Forged Steel

Description: Drill Bit 12"

Recommendation: Poor condition, duplicate, partial and not complete set



Accession #: YO1-C197-08

Medium: Metal/Forged Steel

Description: Drill Bit 12"

Recommendation: Poor condition, duplicate, partial and not complete set



Accession #: YO1-C197-09

Medium: Metal/Forged Steel

Description: Drill Bit 15"

Recommendation: Poor condition, duplicate, partial and not complete set



Accession #: YO1-C197-12

Medium: Metal/Forged Steel

Description: Wrench 9" long

Recommendation: Poor condition, duplicate





Accession #: YO1-978-7A

Medium: Metal

Description: Drill Bit

Recommendation: Poor condition, duplicate, partial and not complete set



Accession #: YO1-978-7B

Medium: Metal

Description: Drill Bit

Recommendation: Poor condition, duplicate, partial and not complete set



Accession #: YO1-978-7C

Medium: Metal

Description: Drill Bit

Recommendation: Poor condition, duplicate, partial and not complete set



Accession #: YO1-978-8A

Medium: Metal

Description: Drill Bit

Recommendation: Poor condition, duplicate, partial and not complete set



Accession #: YO1-978-8B

Medium: Metal

Description: Drill Bit

Recommendation: Poor condition, duplicate, partial and not complete set



Accession #: YO1-978-8C

Medium: Metal

Description: Drill Bit

Recommendation: Poor condition, duplicate, partial and not complete set



Accession #: YO1-569-9A

Medium: Metal

Description: Large Nail

Recommendation: Poor condition, not historically relevant



Accession #: YO1-919-11

Medium: Metal

Description: Drill Bit ½"

Recommendation: Poor condition partial and not complete set



Accession #: YO1-936-23

Medium: Metal

Description: Hook for single tree

Recommendation: Duplicate, partial item





Accession #: YO1-936-04

Medium: Metal

Description: Spoke shave "Stamped with DEGP,
Warranted Case Steel

Recommendation: Poor condition, duplicate





Accession #: YO1-895-17A / B / C / D/ E / G

Medium: Metal

Description: Set of 6 drill bits

Recommendation: Poor condition, duplicate, partial item



Accession #: YO1-025-19-11

Medium: Metal

Description: Team Bit for horses

Recommendation: Poor condition, duplicate



Accession #: YO1-025-19-14

Medium: Metal

Description: Team Bit for horses

Recommendation: Poor condition, duplicate



Accession #: YO1-C151-02

Medium: Metal

Description: Double twist horse bit

Recommendation: Poor condition, duplicate



Accession #: YO1-740-02

Medium: Metal

Description: Horse Bit

Recommendation: Poor condition, duplicate

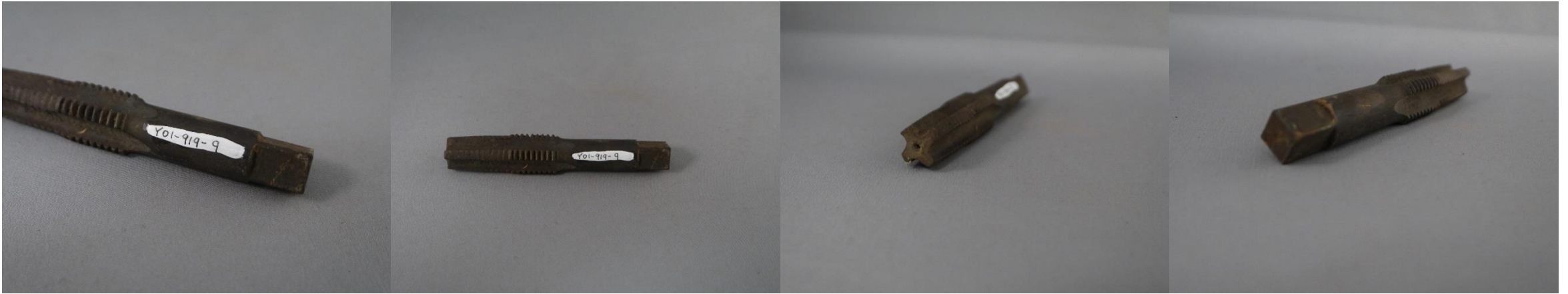


Accession #: YO1-C4-18

Medium: Metal

Description: Drill Bit

Recommendation: Partial item, not complete



Accession #: YO1-919-9

Medium: Metal

Description: Tap Wrench $\frac{3}{4}$ " x $\frac{1}{32}$ " x 10"

Recommendation: Partial, not complete, duplicate



Accession #: YO1-C16-22

Medium: Metal

Description: Soldering Iron

Recommendation: Poor condition, duplicate



Accession #: YO1-10x71-08

Medium: Metal/Wood

Description: Soldering Iron

Recommendation: Poor condition, duplicate



Accession #: YO1-948-20

Medium: Metal/Wood

Description: Brace

Recommendation: Poor condition, duplicate





Accession #: YO1-C226-03

Medium: Metal/Iron/Steel

Description: Wrench

Recommendation: Poor condition, duplicate



Accession #: YO1-C226-11

Medium: Metal/Wood

Description: Stretcher for metal working. Fence stretching tool. 14 $\frac{3}{4}$ " "Made by St. Biedy Foote Co., Newark N.J." "Pat SDept. 13, 1904"

Recommendation: Poor condition, lacks historical relevance to collection



Accession #: YO1-C151-8

Medium: Metal

Description: Horse Bit

Recommendation: Poor condition, duplicate



Accession #: YO1-C197-10

Medium: Metal/Wood

Description: Wrench "Bolit Bvar USA" stamp in diamond shape with broken arrow
10 ¼ " Half of handle is modern replacement.

Recommendation: Poor condition, duplicate



Accession #: YO1-C197-11

Medium: Metal/Wood

Description: Wrench 6 ½"

Recommendation: Poor condition, duplicate



Accession #: YO1-148-02

Medium: Metal

Description: Wrench

Recommendation: Poor condition, duplicate



Accession #: YO1-919-13

Medium: Metal

Description: Wrench 10" "Buffalo Barcalo" stamp

Recommendation: Poor condition, duplicate

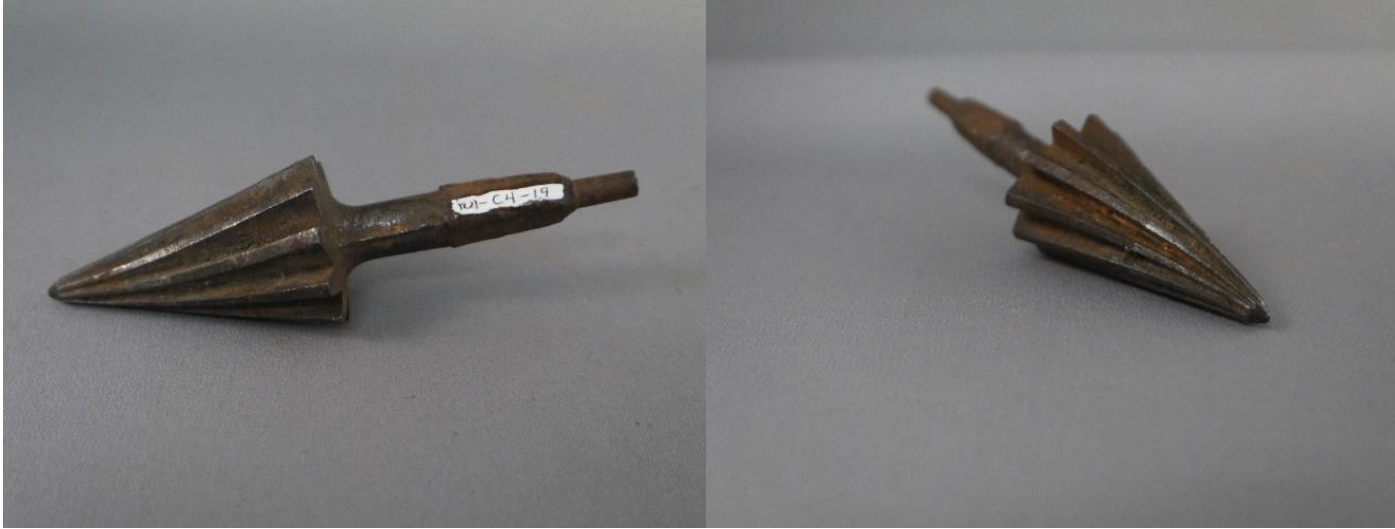


Accession #: YO1-965-01

Medium: Metal

Description: Wrench "No. 15" stamp on handle

Recommendation: Poor condition, duplicate

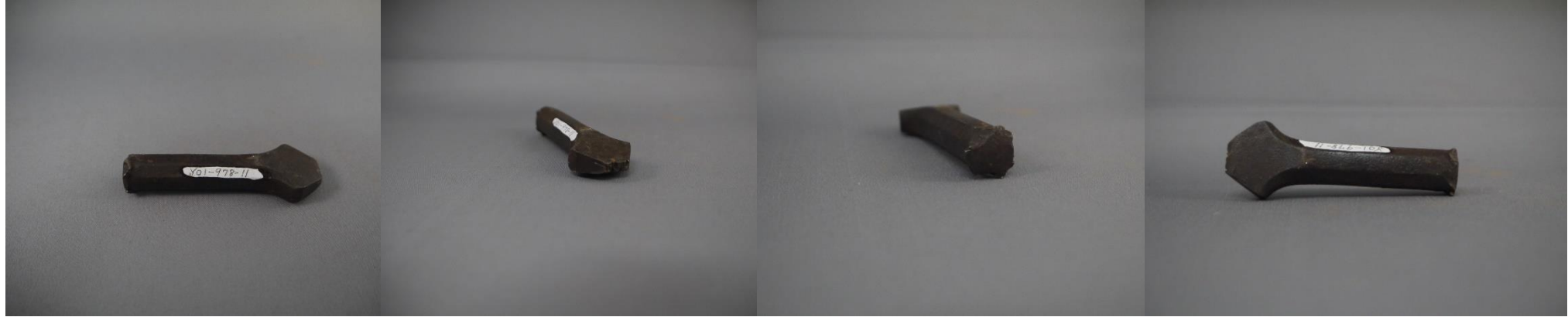


Accession #: YO1-C4-19

Medium: Metal

Description: Reamer/Drill Bit

Recommendation: Poor condition, duplicate



Accession #: YO1-978-11

Medium: Metal

Description: Die for stamping metal

Recommendation: Poor condition, partial item, not complete



Accession #: YO1-661-45

Medium: Metal

Description: Chisel

Recommendation: Poor condition, partial item, not complete



Accession #: YO1-661-50

Medium: Metal

Description: Hook on swivel

Recommendation: Poor condition, partial item, not complete



Accession #: YO1-965-05

Medium: Metal/Wood

Description: Brace

Recommendation: Poor condition, duplicate



Accession #: YO1-292-02

Medium: Metal

Description: Large Knife, no handle. Scythe blade, carbon steel with green finish.

Recommendation: Poor condition, partial item



Accession #: YO1-C173-05

Medium: Metal/Forged Steel

Description: Bent Nose Pliers 9 ½" "Krauter & Co. Newark N.j. USA No 1923-10" stamp on inside handles.

Recommendation: Poor condition, duplicate





Accession #: YO1-C173-06

Medium: Metal/Wood

Description: Screwdriver 10"

Recommendation: Poor condition, duplicate

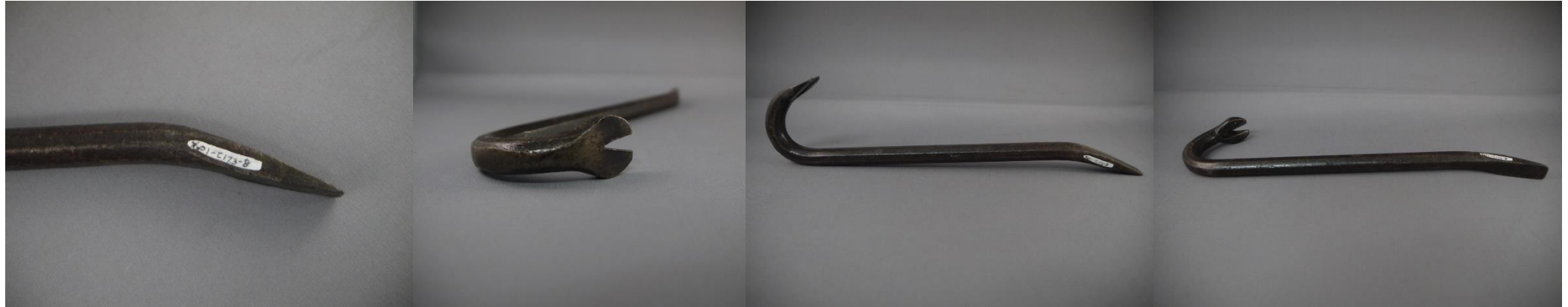


Accession #: YO1-C173-07

Medium: Metal/Wood

Description: Screwdriver 16 ½"

Recommendation: Poor condition, duplicate



Accession #: YO1-C173-08

Medium: Metal/Forged Steel

Description: Crow bar 11"

Recommendation: Poor condition, lacks historical relevance



Accession #: YO1-C173-09

Medium: Metal/Forged Steel

Description: Chisel 7"

Recommendation: Poor condition, duplicate



Accession #: YO1-C173-12

Medium: Metal

Description: Wrench 8 ½"

Recommendation: Poor condition, duplicate



Accession #: YO1-C173-14

Medium: Metal/Forged Steel

Description: Wrench 16"

Recommendation: Duplicate



Accession #: YO1-C173-18

Medium: Metal

Description: Wrench

Recommendation: Duplicate



Accession #: YO1-C173-19

Medium: Metal

Description: Vice

Recommendation: Poor condition, out of collection scope



Accession #: YO1-C173-20

Medium: Metal/Cast Iron

Description: C-clamp "EC Stearns & Co. Syracuse, N.Y." "4"

Recommendation: Duplicate





Accession #: YO1-507

Medium: Metal/Wood

Description: Screw for Vice

Recommendation: Poor condition, partial item



Accession #: YO1-648-20

Medium: Metal

Description: Horseshoe

Recommendation: Poor condition, duplicate

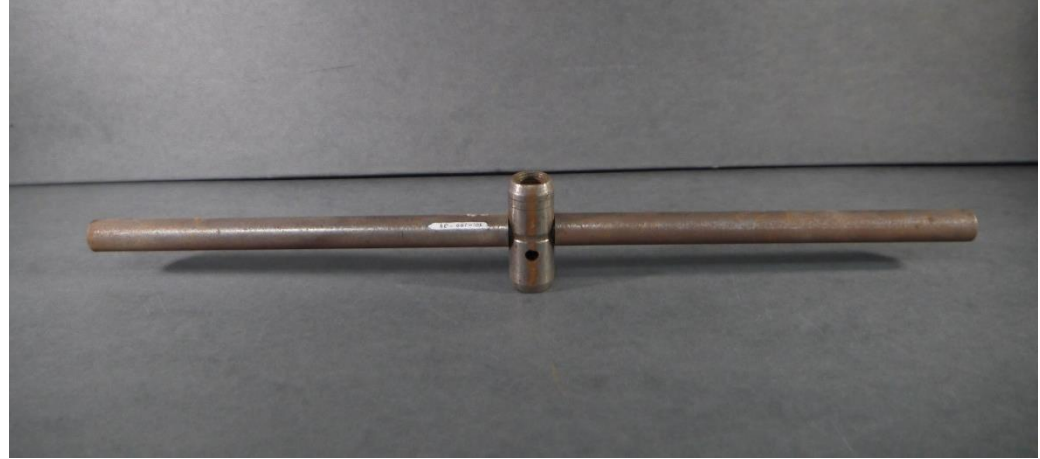


Accession #: YO1-100-39

Medium: Metal

Description: Wrench

Recommendation: Poor condition, partial item





Accession #: YO1-100-81

Medium: Metal

Description: Bit

Recommendation: Poor condition, partial item

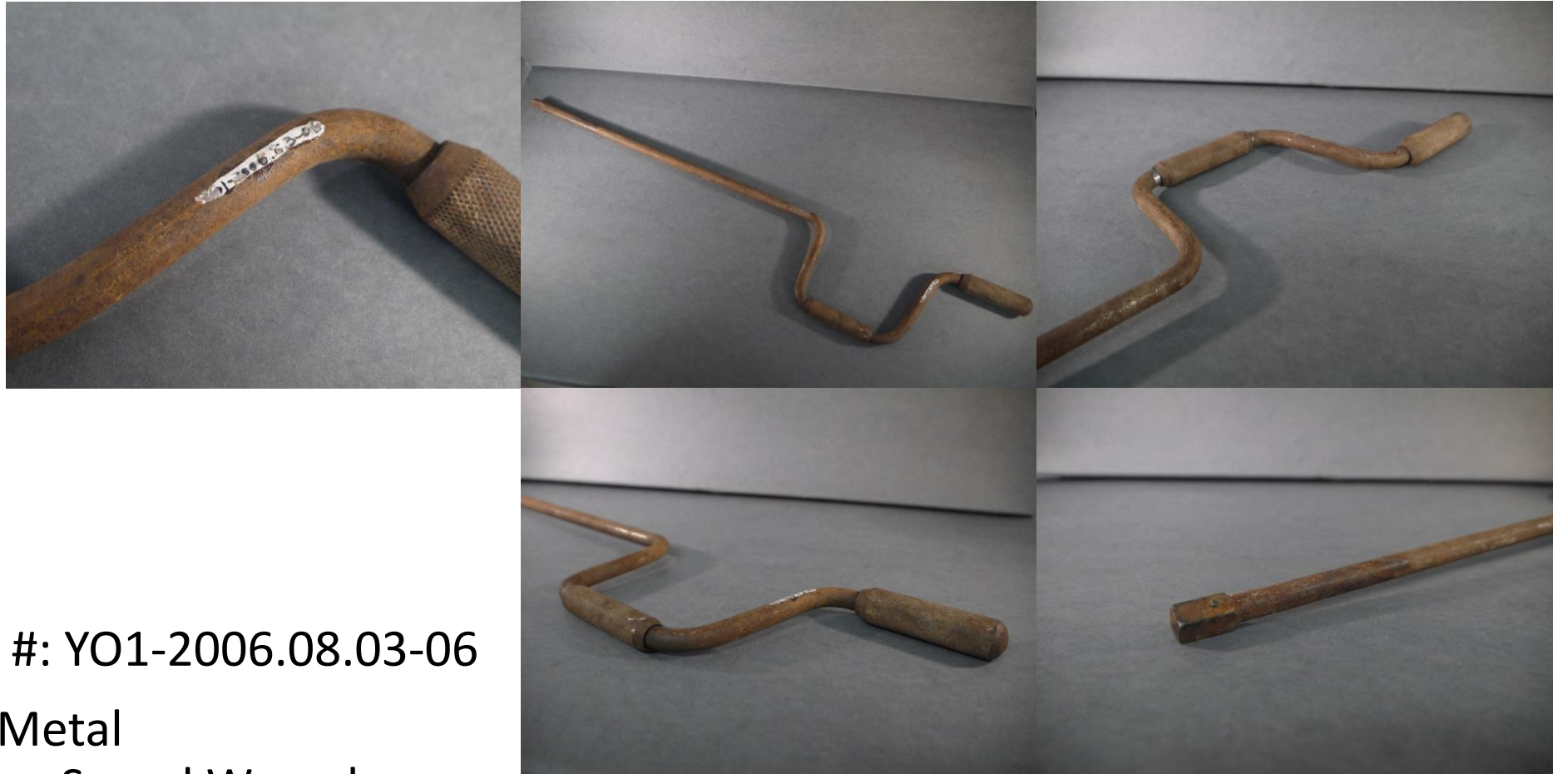


Accession #: YO1-100-83

Medium: Metal

Description: Bit

Recommendation: Poor condition, duplicate



Accession #: YO1-2006.08.03-06

Medium: Metal

Description: Speed Wrench

Recommendation: Poor condition, partial item, duplicate



Accession #: YO1-275-13

Medium: Metal

Description: Nippers, long handled cylindrical blacksmith nippers.

Recommendation: Poor condition, duplicate



Accession #: YO1-2007.01.04-01

Medium: Metal/Wood

Description: Plane

Recommendation: Poor condition, duplicate

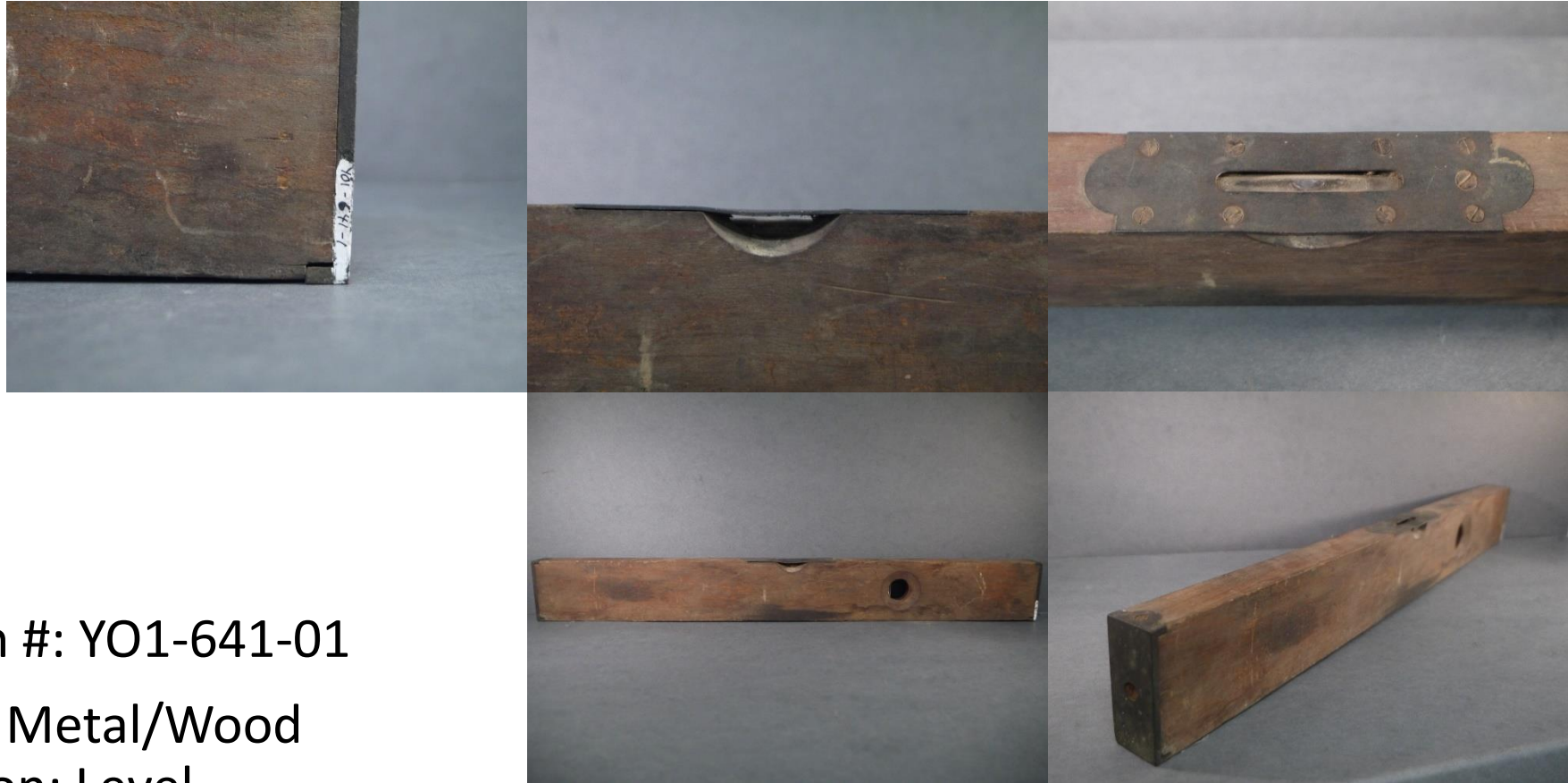


Accession #: YO1-133-38

Medium: Metal

Description: Hook/Crossbar

Recommendation: Poor condition, display/exhibition hardware, partial support for another piece.



Accession #: YO1-641-01

Medium: Metal/Wood

Description: Level

Recommendation: Poor condition, duplicate



Accession #: YO1-919-05

Medium: Metal

Description: Thread cutter for bolts "J.N. King Co. Waterford Conn."

Recommendation: Poor condition, duplicate, partial item (complete set exists in the collection)



Accession #: YO1-919-06

Medium: Metal

Description: Tap Wrench

Recommendation: Poor condition, duplicate, partial item (complete set exists in the collection)



Accession #: YO1-191-07

Medium: Metal

Description: Tap Wrench

Recommendation: Poor condition, duplicate, partial item (complete set exists in the collection)



Accession #: YO1-919-08

Medium: Metal

Description: Tap Wrench

Recommendation: Poor condition, duplicate, partial item (complete set exists in the collection)



Accession #: YO1-919-18

Medium: Metal

Description: Socket Wrench with T handle for Caterpillar Tractor

Recommendation: Poor condition, partial item



Accession #: Y01-C16-24

Medium: Metal

Description: Bit

Recommendation: Poor condition, duplicate



Accession #: YO1-63-6-6

Medium: Metal

Description: Socket Wrench

Recommendation: Poor condition, duplicate



Accession #: YO1-63-6C

Medium: Metal

Description: Wrench

Recommendation: Poor condition, duplicate



Accession #: YO1-919-14B

Medium: Metal

Description: Pump Body

Recommendation: Poor condition, partial item

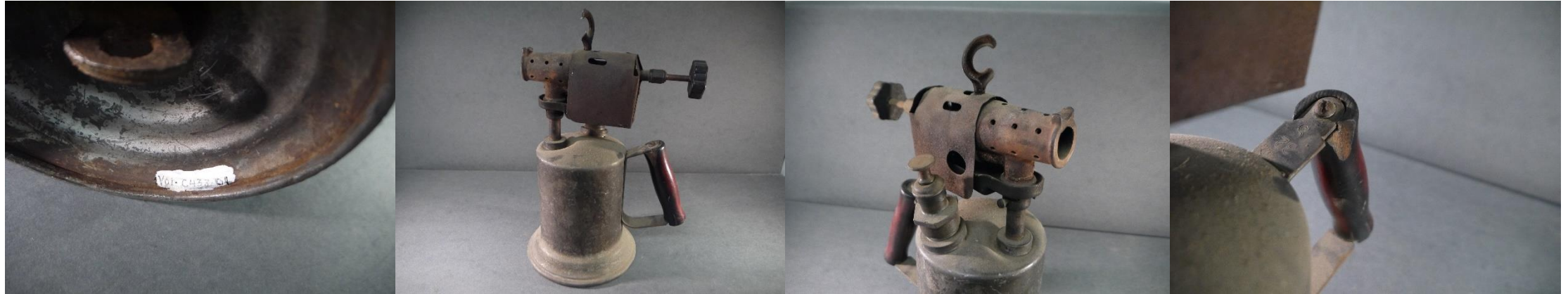


Accession #: YO1-C361-02

Medium: Metal

Description: Poultry Brooder. Black metal heater for poultry. Flame adjuster and flame pipe with chimney that extends up 6" from the fuel container.

Recommendation: Poor condition, partial object, lacks historical relevance, possible hazardous material.



Accession #: YO1-C433-01

Medium: Metal/Wood

Description: Torch with wooden handle and tank

Recommendation: Poor condition, not historically relevant to collection, possible hazardous material.



Accession #: YO1-675-04

Medium: Metal/Wood

Description: Saw "Disston and Sons" stamp on handle

Recommendation: Poor condition, duplicate



Accession #: YO1-948-13

Medium: Metal/Wood

Description: Saw

Recommendation: Poor condition, duplicate



Accession #: YO1-948-14

Medium: Metal/Wood

Description: Saw

Recommendation: Poor condition, duplicate



Accession #: YO1-C16-3 A through L

Medium: Metal

Description: Dies/Wrenches/Pipes "Armstrong, Bridgeport CT"

Recommendation: Poor condition, duplicate (better example exists in collection)



Accession #: YO1-774-02 and 03

Medium: Metal

Description: Pot/Kettle

Recommendation: Poor condition, duplicate



Accession #: YO1-25-148

Medium: Metal

Description: Milk Skimmer

Recommendation: Poor condition, duplicate



Accession #: YO1-919-12

Medium: Metal/Iron

Description: Oil Pan/Cap

Recommendation: Poor condition, partial item, lacks historical relevance



Accession #: YO1-718-02

Medium: Metal/Ron

Description: Griddle

Recommendation: Poor condition, duplicate, part of set suggested for deaccession



Accession #: YO1-857-1A/1B/1C

Medium: Metal/Gray Enamel

Description: Long Grey Pan with lid and insert strainer

Recommendation: Poor condition, lacks historical relevance





Accession #: YO1-406-09

Medium: Metal/Wood

Description: Cake Carrier with wooden board with lid

Recommendation: Poor condition, out of collections scope 1950s



Accession #: YO1-C431-07

Medium: Metal/Gray Enamel

Description: Grey Basin used in kitchen

Recommendation: Poor condition, lacks historical relevance



Accession #: YO1-C431-13C

Medium: Metal/Grey Enamel

Description: Pot Lid

Recommendation: Poor condition, lacks historical relevance



Accession #: YO1-149-4

Medium: Metal/White Enamelware

Description: Pot/Measuring Cup

Recommendation: Poor condition, out of collections scope, 1940s



Accession #: YO1-320-16

Medium: Metal/Beige Enamelware

Description: Round Platter/Plate

Recommendation: Poor condition, out of collections scope, 1940s



Accession #: YO1-320-17

Medium: Metal/Beige Enamelware

Description: Oval Platter

Recommendation: Out of collections scope, 1940s



Accession #: YO1-320-21

Medium: Metal/White Enamelware

Description: Round White Platter/Plate

Recommendation: Out of collections scope, 1940s



Accession #: YO1-320- 06/07/08/09

Medium: Metal/Beige Enamelware

Description: 4 small bowls

Recommendation: Out of collections scope, 1940s



Accession #: YO1-320-14

Medium: Metal/White Enamelware

Description: Chamber Pot with handle

Recommendation: Poor condition, duplicate, out of collections scope, 1940s



Accession #: YO1-10x40-01

Medium: Metal/Blue Enamelware

Description: Chamber pot with handle

Recommendation: Poor condition, duplicate, lacks historical relevance



Accession #: YO1-312-02

Medium: Metal/Gray Enamel

Description: Chamber pot

Recommendation: Poor condition, duplicate, lacks historical relevance



Accession #: These items do not have accession numbers but are the same materials as the previous set.

Medium: Metal/Beige Enamelware

Description: Dishes not in collection, but part of set.

Recommendation: Out of collections scope, 1940s