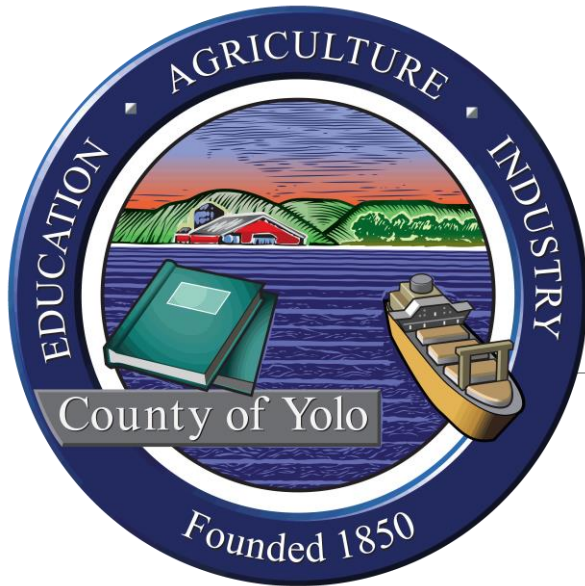


Yolo County Maternal Child & Adolescent Health Advisory Board



2018-19 Annual Report

BOARD OF SUPERVISORS MEETING - JUNE 25, 2019

PRESENTER: CAROLYN CAMPOS, RN, MSN

MCAH ADVISORY BOARD CHAIR

2018-19 Yolo County MCAH Advisory Board Chair Message

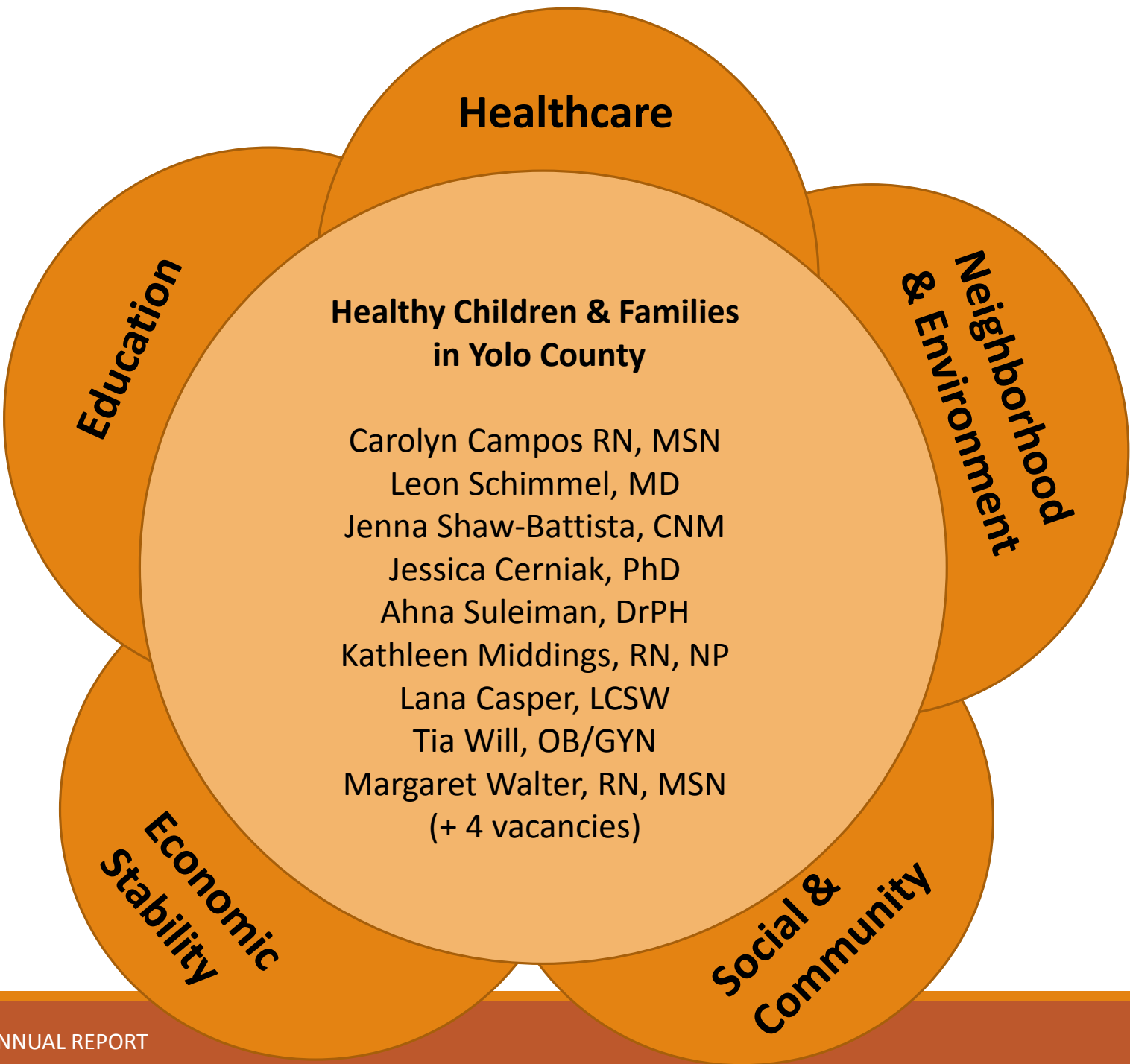


Yolo County MCAH Advisory Board

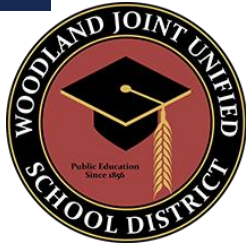
Mission Statement

To proactively work to preserve, promote and enhance health and support systems for Yolo County women, children, adolescents and their families.

2018-2019 Yolo County MCAH Advisory Board Members



Yolo County MCAH Advisory Board Affiliated Organizations



SUCCESS

Where Yolo County does better than others...



Infants

Exclusive breastfeeding at hospital discharge.

Yolo 82.6%
CA 69.8%



Toddlers & Preschoolers

Up to date on vaccinations

Yolo ~98%
CA Goal \geq 95%



School Aged Children

Up to date on vaccinations

Yolo ~98%
CA Goal \geq 95%



Teens and Young Adults

Teen pregnancy rates are down

Yolo rate = 7.7
CA rate = 15.7
(per 1000 births to 15-19 y/o)



Women & Mothers

Yolo County mothers have low C-section rates

Yolo rate 18.3
CA rate 25.8
(per 100 births, 2013-2015)

Opportunities to help our MCAH population thrive



Infants

Exclusive
Breastfeeding at 6
months

**Only 27.7% of WIC
moms exclusively
breastfeeding @
6mos**



Toddlers & Preschoolers

Substantiated
child abuse and
neglect

**44% increase
between 2016 vs
2017**



School Aged Children

Overweight &
Obesity

**1 in 3 kids are
overweight or
obese by 7th
grade**



Teens and Young Adults

Sexually
Transmitted
Infections

**Chlamydia rates
for ages 15-19
climbed while CA
rates flattened**



Women & Mothers

Maternal Mental
Health

**Up to 15% of
hospitalized
pregnant women
had a mental
health diagnosis**

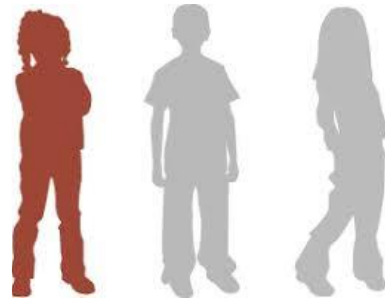
Barriers to ACCESS

*A Cross cutting theme at MCAH
Advisory Board Meetings in
2018-19*

*More than half of
families with school
aged kids are living with
increased stressors
related to poverty*

Yolo County children ages 5-17, eligible for free and reduced price school meals

2007



33% kids eligible

VS

2017



52% kids eligible

Yolo County
MCAH Advisory
Board

2019-2020

Equality



Equity



Addressing Root Causes



To understand past efforts that Yolo County has succeeded in...

To apply those learnings to optimize **thriving** children and families.

Key Findings & Recommendations

- Poverty, and its effects, are a root cause of poor health outcomes for the MCAH population
- Addressing poverty and inequality head-on would improve numerous outcomes for women, children, and their families
- Despite poverty being identified as a fundamental driver of health and social concerns, no entity in Yolo County is focused solely on poverty reduction
- In order to address poverty directly, the MCAH Advisory Board recommends the Board of Supervisors and other stakeholders form a community leadership collaborative focused exclusively on poverty reduction strategy development and implementation