

Thank you participating in the YCHC deaccessioning process!

- You will review photographs and collection information for each of the items suggested for deaccession via this **Power Point PDF**.
- You will be casting a preliminary vote on the items to retain, remove, or that you are not sure about via the **Survey Monkey Voting Link**.
<https://www.surveymonkey.com/r/9VDH82J>
- This Collections Power Point is for items to be reviewed before the **September 2019** Collections Committee meeting on *Wednesday, September 11th at 5:30pm*.

- As you review each item it is helpful to have one window open with the power point images and one internet browser survey to cast your vote.

The screenshot shows the 'Objects Catalog' application window. The main record for 'Pan, Muffin' (Accession # YO1-C431-12) is displayed. The 'Description' field contains: 'Gray enamel muffin pan for 6 muffins. Each cup measures 3 1/4" across by 1 1/2" deep.' The 'Material' is listed as 'Enamel'. To the right, a presentation slide shows four images of the muffin pan from different angles. Below the images, the text reads: 'Accession #: YO1-C431-12', 'Medium: Metal/Tin', 'Description: Pudding pan corner, gray enamel pudding cooker', and 'Recommendation: Poor condition, not historically relevant and out of scope'. A survey question '1. Should we keep item YO1-C431-12?' is followed by three radio button options: 'Retain', 'Remove', and 'Not Sure'.

- The information about each piece is taken from the Past Perfect database record.
- If you would like to examine an item in person, the curator is able to pull it for the next meeting.
- The next slide starts the power point of items to be reviewed and voted on.



Accession #: YO1-100-15

Medium: Metal/Wood

Description: Plane, wood working tool

Recommendation: Poor condition, duplicate



Accession #: YO1-100-50

Medium: Wood

Description: Gauge, woodworking tool

Recommendation: Poor condition, partial item



Accession #: YO1-100-06

Medium: Wood

Description: Plane, wood working tool, coffin shaped

Recommendation: Poor condition, partial item, duplicate



Accession #: YO1-025-13A

Medium: Wood/Metal

Description: Tripod, for surveyor's instruments

Recommendation: Poor condition, lacks historical significance, partial object



Accession #: YO1-025-13B

Medium: Wood/Metal

Description: Tripod, for surveyor's instruments

Recommendation: Poor condition, lacks historical significance, partial object



Accession #: YO1-757-01

Medium: Wood

Description: Ironing Board

Recommendation: Poor condition, out of collections scope, lacks historical relevance



Accession #: YO1-134-26

Medium: Wood

Description: Furniture / Side table / Plant stand

Recommendation: Poor condition, not able to be displayed, top detached



Accession #: YO1-911-45

Medium: Glass / Wood / Fabric

Description: Mirror

Recommendation: Poor condition, out of collections scope



Accession #: YO1-977-01

Medium: Metal

Description: Space Heater, reflector type
Recommendation: Poor condition, not historically relevant, out of collections scope (1940s/50s, electric), frayed wires are dangerous.



Accession #: YO1-145-04

Medium: Metal

Description: Waffle Iron, Marion waffle iron, Model 77

Recommendation: Poor condition, out of collections scope (1950s, electric), rusted throughout.





Accession #: YO1-C200-23

Medium: Ceramic

Description: Chamber Pot, upstanding spout, sloped on other end

Recommendation: Poor condition, duplicate



Accession #: YO1-C106-02

Medium: Ceramic

Description: Chamber Pot

Recommendation: Poor condition, duplicate, not historically relevant



Accession #: YO1-10x20-01

Medium: Metal

Description: Chamber Pot, blue and white enamelware

Recommendation: Poor condition, duplicate, lacks historical relevance



Accession #: YO1-343-39

Medium: Metal

Description: Thermos "Universal pat. 1917" stamp on bottom

Recommendation: Poor condition, film and black spots along top and body and lacks historical relevance



Accession #: YO1-326-14

Medium: Glass/Peppercorns

Description: Jar of Peppercorns

Recommendation: Poor condition, organic matter, lacks historical significance and out of collections scope since this is a modern container. Suggestion to destroy or throw away.



Accession #: YO1-985-08

Medium: Metal

Description: Chafing Dish, rectangular with sitting wolf figures at corners and fern pattern on interior and "G.H." monogrammed at center. Basket style. Silver.
Recommendation: Poor condition, out of collections scope and not historically relevant.



Accession #: YO1-C201-13B

Medium: Metal

Description: Electric foot pedal for sewing machine which was previously deaccessioned, foot pedal remained (?)

Recommendation: Out of collections scope (1950s), partial item

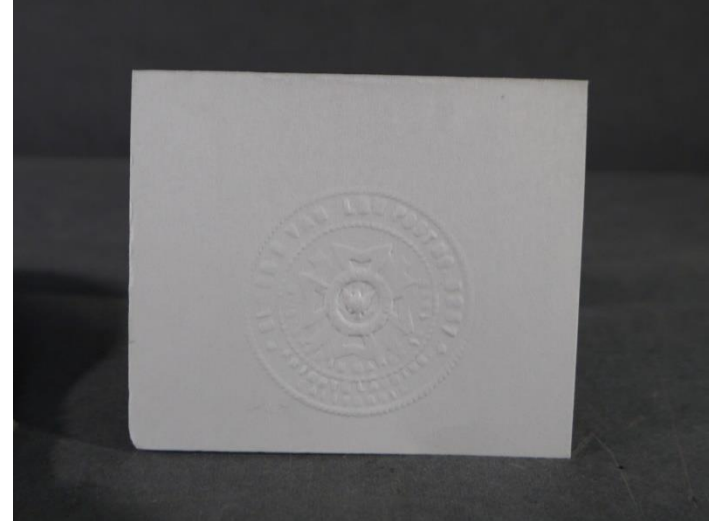


Accession #: YO1-801 A / B

Medium: Metal / Leather

Description: Stamp / Seal is for Knights Landing
Veterans of Foreign Wars

Recommendation: Out of collections scope, possible
transfer to Knight Landing historical organization.





Accession #: YO1-389-40

Medium: Metal

Description: Display Stand, chrome metal

Recommendation: Not historically relevant, no context for item.

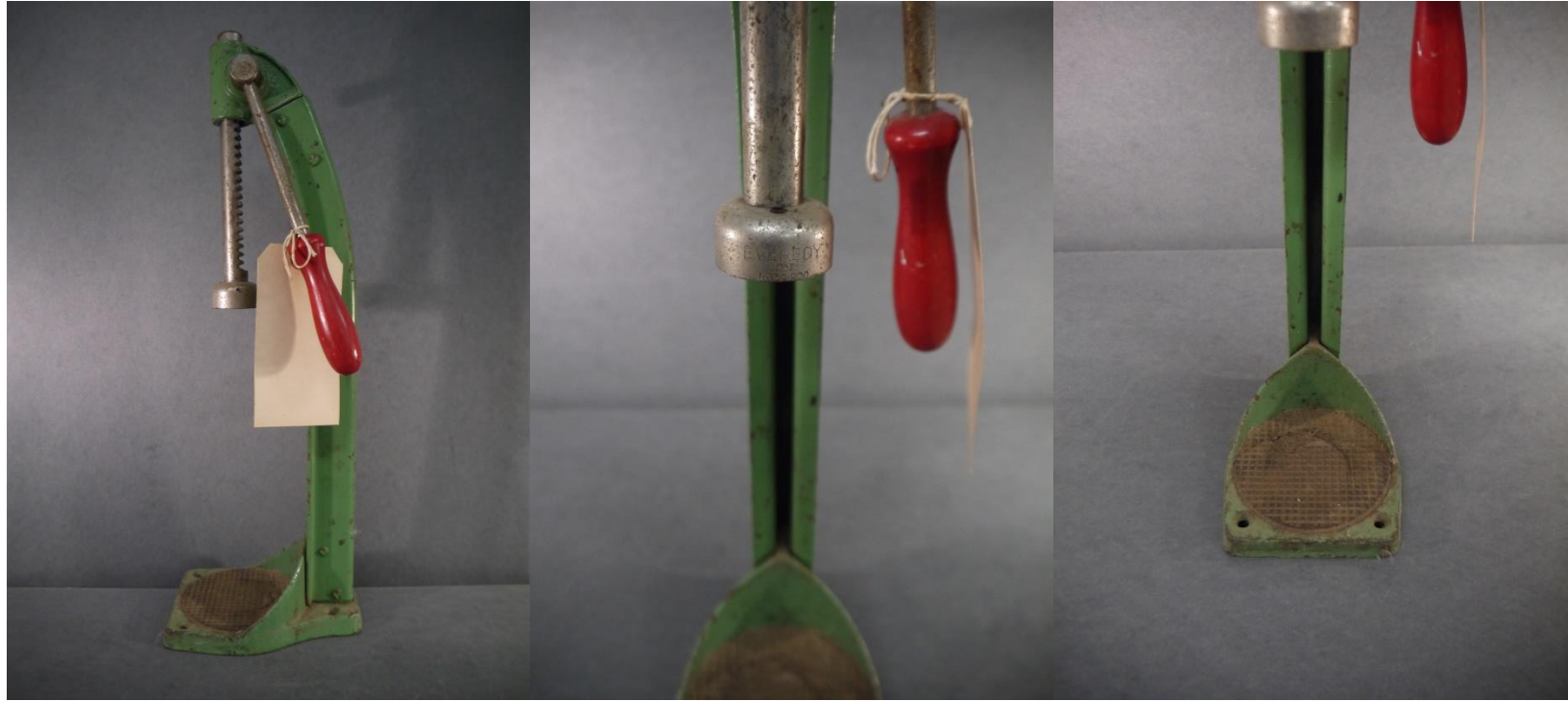


Accession #: YO1-C254-8A

Medium: Metal

Description: Bottle Capper, 19" iron stand with ratchet mechanism. Used for home bottling of beer bottles.

Recommendation: Poor condition, not historically relevant.



Accession #: YO1-569-40

Medium: Metal / Wood

Description: Bottle Capper

Recommendation: Not historically relevant



Accession #: YO1-343-064

Medium: Metal

Description: Bread Box

Recommendation: Lacks historical relevance, out of collections scope



Accession #: YO1-C257-01

Medium: Metal

Description: Metal Box, food container. Tin for Biscuits

Recommendation: Poor condition, lacks historical relevance, not able to be displayed.



Accession #: YO1-203-02

Medium: Metal

Description: Tin, worn label used to say "Cereal-All Bran, puffed rice"

Recommendation: Poor condition, lacks historical relevance, not able to be displayed.



Accession #: YO1-013-46

Medium: Metal

Description: Frame, folding running board carrier for old cars

Recommendation: Poor condition, lacks historical relevance, not able to be displayed.



Accession #: YO1-C436-01

Medium: Ceramic / Metal

Description: Lamp, hand painted

Recommendation: Poor condition, not able to be displayed, out of collections scope (1940s, electric)



Accession #: YO1-C054-01

Medium: Wood

Description: Chalkboard with drop desk and clock with moveable hands on top.

Recommendation: Poor condition (peeling and wood deteriorating), not able to be displayed.



Accession #: YO1-C053-03 1A through E

Medium: Cardboard / Metal

Description: Rosette Irons for baking. Frying irons and their handles are cast iron. Box label "Manufactured by Alfred Andersen & Co. Home Baking Dept. So. Minneapolis, Minnesota."

Recommendation: Poor condition, not historically relevant, out of collections scope, not able to be displayed.



Accession #: YO1-C431-02

Medium: Wood

Description: Rolling Pin

Recommendation: Poor condition, lacks historical relevance, duplicate



Accession #: YO1-2013.8.01-002 A / B / C

Medium: Wood

Description: Picture Frames

Recommendation: Poor condition, lacks historical relevance, no donor information



Accession #: YO1-C121-03

Medium: Fabric / Metal / Leather

Description: Trunk

Recommendation: Poor condition, out of collections scope, not able to be displayed



Accession #: YO1-C403-02 through 17

Medium: Metal / Wooden Box

Description: Pipe threader tools

Recommendation: Poor condition, duplicate, partial item



Accession #: YO1-C416-01 A through K

Medium: Metal

Description: Canner / Burpee Machine / Stamp on item states "Burpee Quick Sealer for #2 and #3 can, Burpee Can Sealer Company, Chicago, Ill."

Recommendation: Poor condition, duplicate



Accession #: YO1-628-11

Medium: Leather

Description: Leather Cords

Recommendation: Poor condition, not historically significant, partial item



Accession #: YO1-710-01

Medium: Metal / Cardboard / Detergent

Description: Detergent

Recommendation: Out of collections scope (1950s) and hazardous material



Accession #: YO1-C200-10

Medium: Cardboard

Description: RIT Dye

Recommendation: Out of collections scope (1950s) and hazardous material



Accession #: YO1-444- 01 / 02 / 03 / 05 ... 04 missing

Medium: Ceramic

Description: White cups with pink flowers and pink band on rim

Recommendation: Poor condition, duplicate, uncertain fabrication and lacks historical relevance.



Accession #: YO1-444- 01 / 02 / 03 / 05 ... 04 missing

Medium: Ceramics

Description: White saucers with pink band on edge

Recommendation: Poor condition, duplicate, uncertain fabrication and lacks historical relevance.



Accession #: YO1-444- 07 / 08 / 09

Medium: Ceramic

Description: White plates with pink flowers and pink band on rim

Recommendation: Poor condition, duplicate, uncertain fabrication and lacks historical relevance.



Accession #: YO1-444- 10 / 11 / 12 / 13

Medium: Ceramic

Description: White saucers with pink flowers and pink band on rim

Recommendation: Poor condition, duplicate, uncertain fabrication and lacks historical relevance.



Accession #: YO1-444-14

Medium: Ceramic

Description: White tea pot with lid with pink flowers and pink band on rim and gold on handle

Recommendation: Poor condition, duplicate, uncertain fabrication and lacks historical relevance.



Accession #: Y01-444-15

Medium: Ceramic

Description: White pitcher with pink flowers and pink band on rim

Recommendation: Poor condition, duplicate, uncertain fabrication and lacks historical relevance.



Accession #: Y01-518- 11A / 12A / 13A / 14A / 15A / 16A

Medium: Ceramic

Description: White cups with painted pink and white roses and gold trim on rim

Recommendation: Poor condition (faded paint), duplicate, not historically relevant.



Accession #: YO1-518- 11B / 12B / 13B / 14B / 15B

Medium: Ceramic

Description: White saucers with painted pink and white roses and gold trim on rim

Recommendation: Poor condition, duplicate, not historically relevant.



Accession #: YO1-518- 17A / 18A / 19A / 20A / 21A

Medium: Ceramic

Description: White cups with painted red and white flowers and gold trim on rim

Recommendation: Duplicate, not historically relevant.

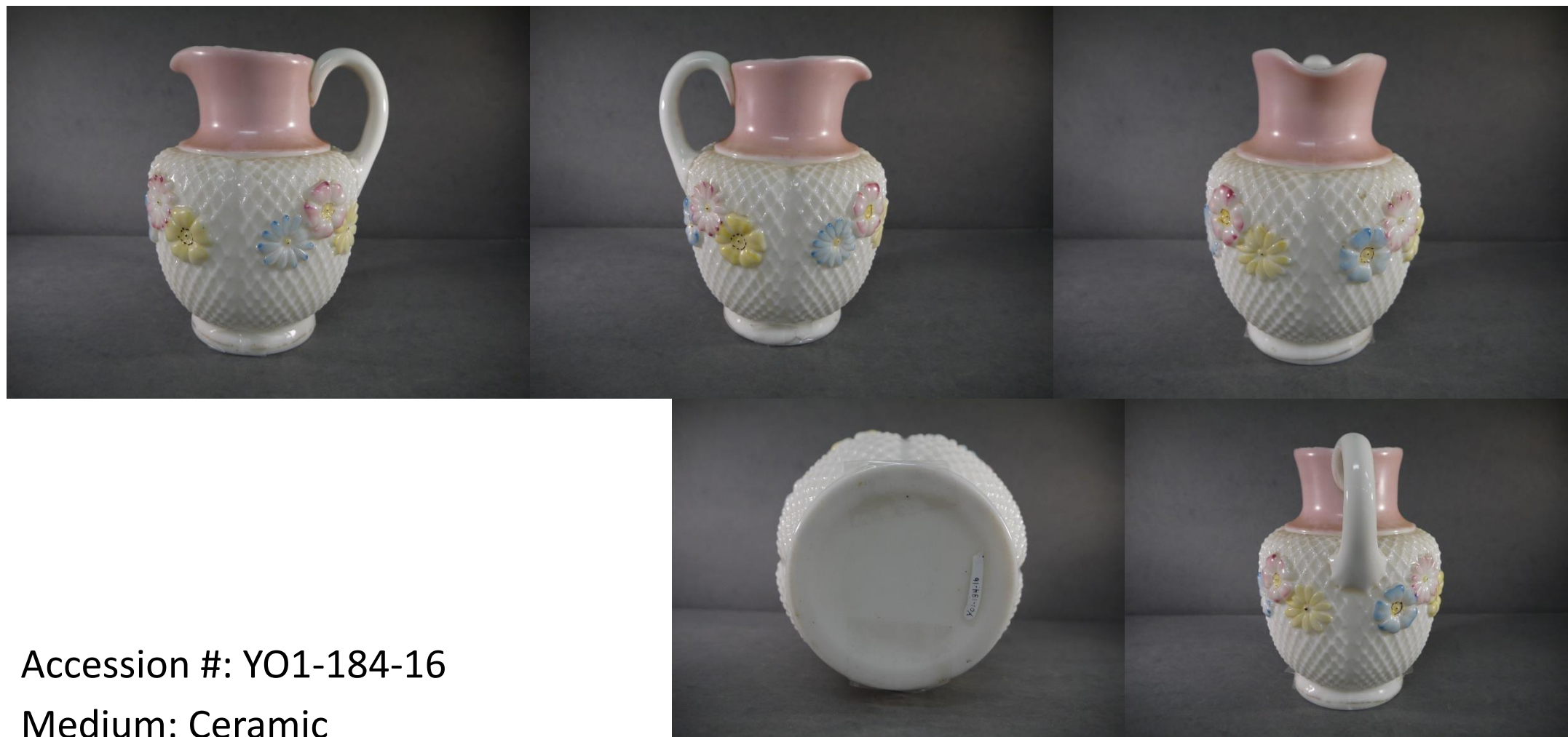


Accession #: YO1-518- 16B / 17B / 18B / 19B / 20B

Medium: Ceramic

Description: White cups with painted red and white flowers and gold trim on rim

Recommendation: Duplicate, not historically relevant.



Accession #: YO1-184-16

Medium: Ceramic

Description: Pitcher, white and pink milk glass with flowers in blue, pink and yellow.

Recommendation: Poor condition, the bottom is broken out and has been re-glued. Not able to be displayed.



Accession #: YO1-123-14

Medium: Ceramic

Description: Cream Pitcher (small)

Recommendation: Poor condition, not a complete set, lacks historical relevance



Accession #: YO1-049-01

Medium: Ceramic/Porcelain

Description: Vase, white glass with painted leaf pattern

Recommendation: Poor condition (chipped), lacks historical relevance, duplicate



Accession #: YO1-2010.6.01-13

Medium: Ceramic

Description: Cream Pitcher (small) white with painted pink rose

Recommendation: Poor condition, not a complete set, lacks historical relevance

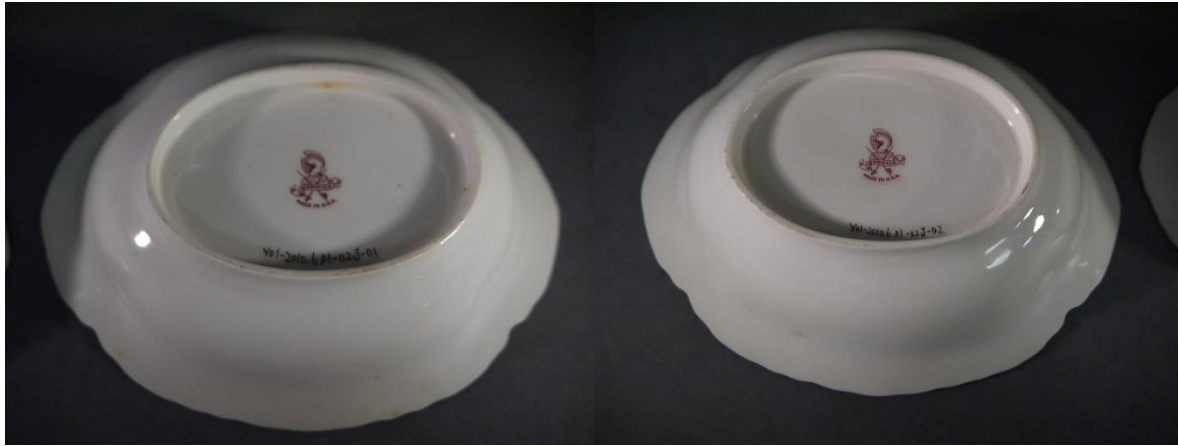


Accession #: YO1-2010.6.01-82A

Medium: Ceramic

Description: Sauce Dish

Recommendation: Duplicate



Accession #: YO1-2010.01-02J-01 / 02

Medium: Ceramic

Description: Dipping Bowl

Recommendation: Duplicate



Accession #: YO1-2010.6.01-02I-01 (dish) -02 (lid)

Medium: Ceramic

Description: Dish with lid

Recommendation: Duplicate



Accession #: YO1-2010.6-01-02

Medium: Ceramics

Description: Pitcher

Recommendation: Duplicate





Accession #: YO1-2010.6.01-02P-01 (base) 02 (lid)

Medium: Ceramic

Description: Sugar Dish

Recommendation: Duplicate



Accession #: YO1-2010.6.01-02R-01 (base) 02 (lid)

Medium: Ceramic

Description: Tea Pot

Recommendation: Duplicate





Accession #: YO1-2010.6.01-02N-01 (salt shaker) 02 (pepper shaker)

Medium: Ceramic

Description: Salt and Pepper Shakers

Recommendation: Duplicate



Accession #: YO1-2010.6.01-02M

Medium: Ceramic

Description: Platter

Recommendation: Duplicate



Accession #: YO1-2010.6.01-02L

Medium: Ceramic

Description: Platter

Recommendation: Duplicate



Accession #: YO1-2010.6.01-02C-01 / 02 / 03 / 04 / 05 / 06 / 07 / 08 / 09 / 10

Medium: Ceramic

Description: Cups

Recommendation: Duplicate



Accession #: YO1-2010.6.01-02D-01 / 02 / 03 / 04 / 05 / 06 / 07 / 08 / 09 / 10 / 11 / 12

Medium: Ceramic

Description: Saucers

Recommendation: Duplicate



Accession #: YO1-2010.6.01-02A-01 / 02 / 03 / 04 / 05 / 06 / 07 / 08 / 09 / 10 / 11 / 12

Medium: Ceramic

Description: Saucers

Recommendation: Duplicate



Accession #: YO1-2010.6.01.02B-01 / 02 / 03/ 04 / 05 / 06/ 07 / 08 / 09 / 10 / 11 / 12

Medium: Ceramic

Description: Plates

Recommendation: Duplicate



Accession #: YO1-2010.6.01-02F-01 / 02 / 03 / 04 / 05 / 06 / 07

Medium: Ceramic

Description: Two handled cups

Recommendation: Duplicate



Accession #: YO1-2010.6.01-025-01 / 02 / 03 / 04 / 05 / 06 / 07

Medium: Ceramic

Description: Saucers

Recommendation: Duplicate

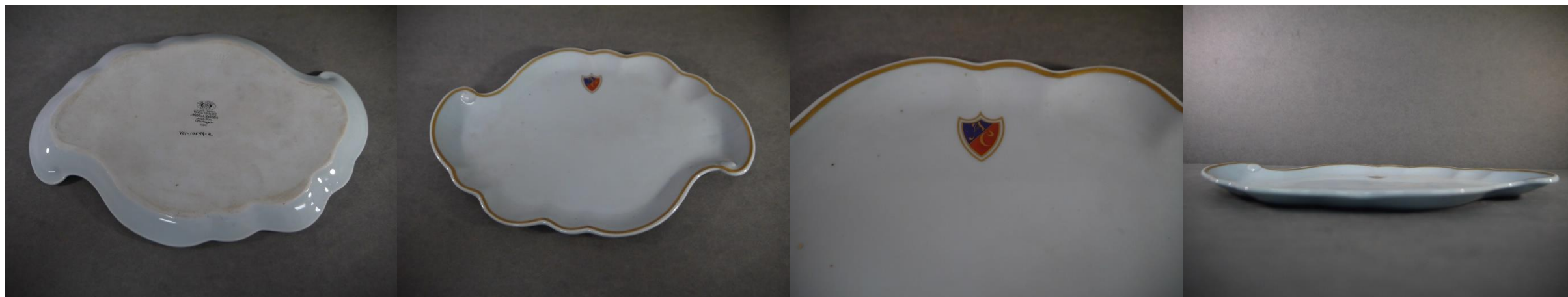


Accession #: YO1-22-205 /206 / 207 / 208

Medium: Ceramic

Description: White cups, no handle

Recommendation: Poor condition (discoloration throughout), not historically significant



Accession #: YO1-10x49-02

Medium: Ceramic/Porcelain

Description: Dresser tray, grey ceramic with gold edging

Recommendation: Lacks historical relevance and lacks donor information



Accession #: YO1-986-01 A / B

Medium: Ceramic

Description: Casserole bowl with lid, beige with green vines and pink flower decoration

Recommendation: Poor condition, lacks historical relevance, out of collections scope (1940s)



Accession #: YO1-897-03

Medium: Ceramic

Description: Calendar Plate / "Complements of E. Krellenberg, Woodland, CA"

Recommendation: Duplicate of exact calendar plate, which is in better condition



Accession #: YO1-880-1A / 1B

Medium: Ceramic

Description: Plates

Recommendation: Poor condition, duplicate



Accession #: YO1-08-06 / 07 / 08 / 09

Medium: Ceramic

Description: Plates

Recommendation: Poor condition, duplicate



Accession #: YO1-08-01 / 02 / 03/ 04 / 05

Medium: Ceramic

Description: Bowls

Recommendation: Poor condition, duplicate



Accession #: Y01-880-02

Medium: Ceramic

Description: Plate

Recommendation: Poor condition, duplicate



Accession #: YO1-2014.2.001-001

Medium: Ceramic

Description: Platter

Recommendation: Not historically relevant, out of collections scope, modern ceramic



Accession #: YO1-22-209 / 210 / 211 / 212

Medium: Ceramic

Description: Plates

Recommendation: Poor condition, duplicate, not historically relevant



Accession #: YO1-22-213 / 214 / 215 / 216 / 217

Medium: Ceramic

Description: Plates

Recommendation: Poor condition, duplicate, not historically relevant



Accession #: YO1-124-18

Medium: Ceramic

Description: Bowl

Recommendation: Poor condition, duplicate, not historically relevant



Accession #: YO1-897-03

Medium: Ceramic

Description: Bowl

Recommendation: Poor condition, not historically significant



Accession #: YO1-282-19

Medium: Ceramic

Description: Vase, footed lattice work bowl with applied ceramic flowers painted pink, blue, gold and green. Italian ceramic.

Recommendation: Out of collections scope, modern



Accession #: YO1-230-07 (egg) / 08 (metal stand)

Medium: Glass / Metal

Description: Decorative Glass Egg

Recommendation: Poor Condition, not able to be displayed



Accession #: YO1-C200-21

Medium: Glass

Description: Decorative Glass Egg

Recommendation: Poor Condition, not able to be displayed



Accession #: YO1-C200-22

Medium: Glass

Description: Decorative Glass Egg

Recommendation: Poor Condition, not able to be displayed



Accession #: YO1-874

Medium: Ceramic

Description: Small Plate

Recommendation: Poor condition, duplicate, not able to be displayed



Accession #: YO1-120-17

Medium: Ceramic

Description: Plate with fruit painted at center, with pink and gold trim

Recommendation: Duplicate, single plate, not part of set



Accession #: YO1-444-05 / 06

Medium: Ceramic

Description: Small Plates

Recommendation: Poor condition, duplicate



Accession #: YO1-10x50-01

Medium: Ceramic

Description: Painted Plate

Recommendation: Out of collections scope



Accession #: YO1-10x50-03

Medium: Ceramic

Description: Painted Plate

Recommendation: Out of collections scope

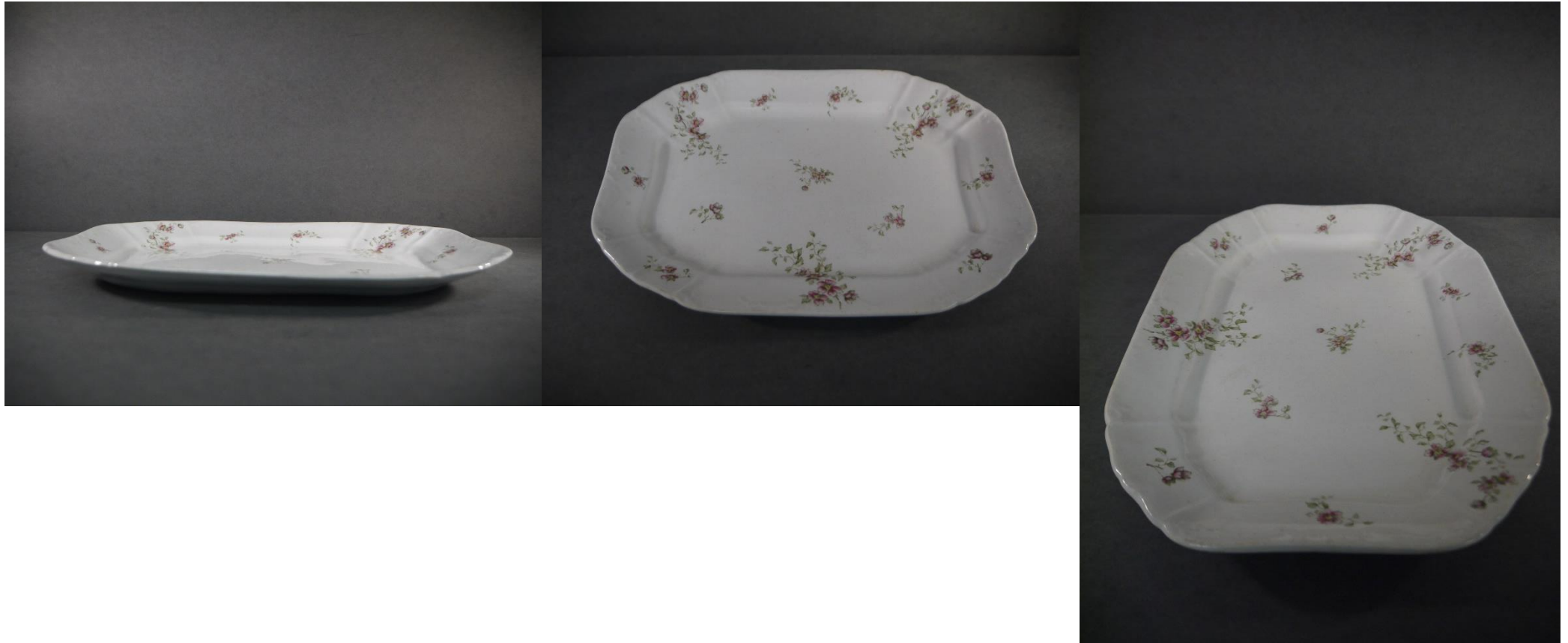


Accession #: YO1-694-09

Medium: Ceramic

Description: Plate

Recommendation: Poor condition (chipped), duplicate, single plate, not part of set

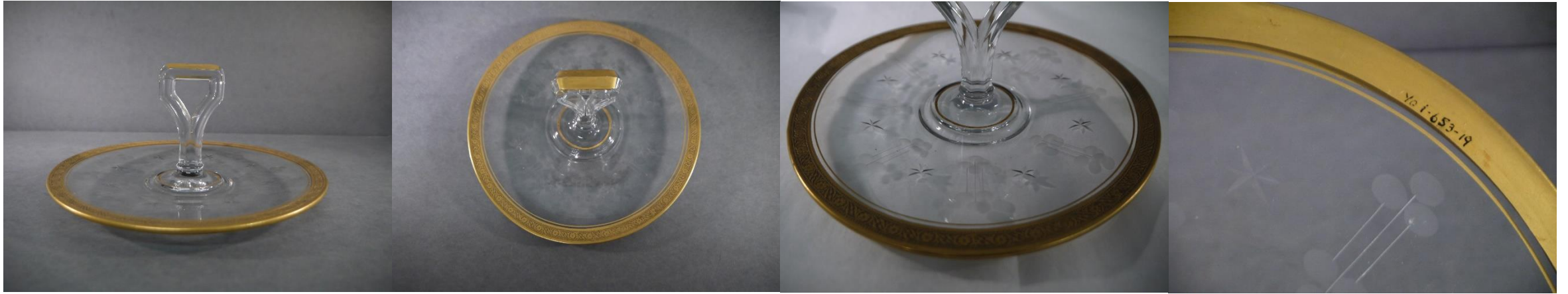


Accession #: YO1-C315-04

Medium: Ceramic

Description: Platter

Recommendation: Duplicate, single item, not part of set



Accession #: YO1-653-19

Medium: Glass

Description: Platter / Cake Plate with gold rim and handle, clear with pattern

Recommendation: Out of collections scope, modern glass



Accession #: YO1-C251- 01 / 02 / 03 / 04 / 05 / 06 / 07

Medium: Glass

Description: Set of drinking glasses with horseshoe and star imprint

Recommendation: Poor condition, not historically relevant



Accession #: YO1-2010.06.01-8E

Medium: Glass

Description: Glass

Recommendation: Poor condition (broken), not able to be displayed, remainder of set is still in-tact.





Accession #: YO1-C274-33

Medium: Glass

Description: Pitcher

Recommendation: Out of collections scope (modern glass)



Accession #: YO1-46-01

Medium: Glass

Description: Cake Plate

Recommendation:



Accession #: YO1-929-03

Medium: Glass

Description: Glass

Recommendation: Out of collections scope (modern glass)



Accession #: YO1-961-07

Medium: Metal

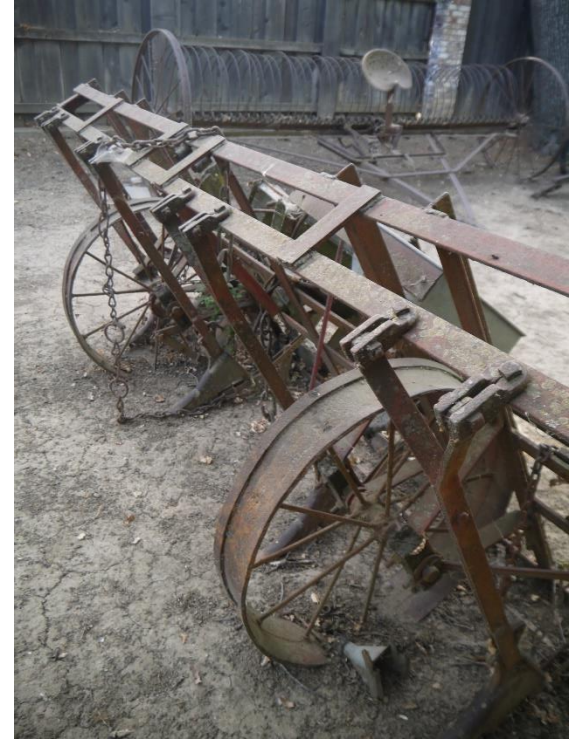
Description: Double Disking Machine / manufactured by John Deere

Recommendation: Out of collections scope









Accession #: YO1-252-52

Medium: Metal / Wood

Description: Seeder with boxes

Recommendation: Poor condition, not able to be displayed







Accession #: YO1-035-01

Medium: Wood / Metal / Rubber

Description: Hay Wagon

Recommendation: Poor Condition, not able to be displayed





Accession #: Y01-239

Medium: Metal

Description: Hand operated rotating tiller

Recommendation: Poor Condition, not able to be displayed, lacks historical relevance