

TEICHERT SHIFLER PROJECT

ZF 2018-0078

EIR Scoping Meeting

September 12, 2019

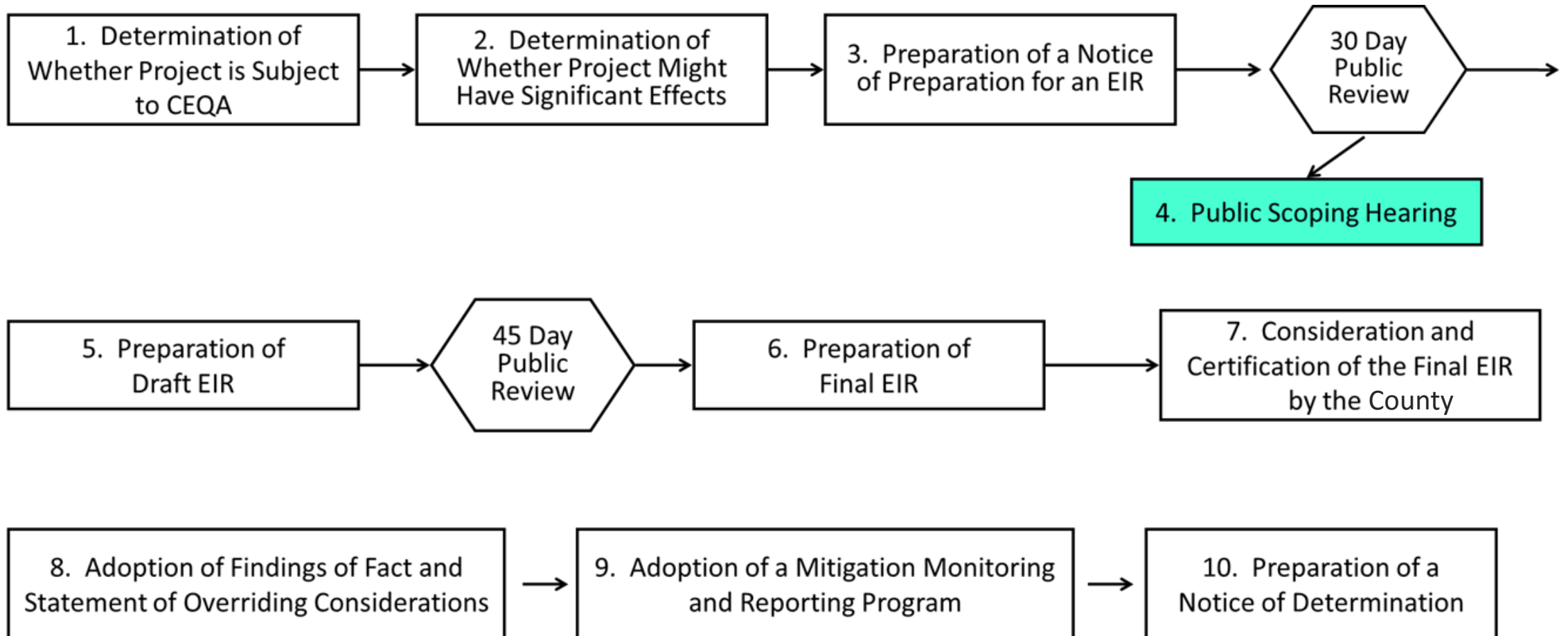
PURPOSE OF MEETING

- Background on County mining program
- Introduction to Teichert project
- Introduction to process
- Answer basic questions about the project
- Receive comments on what should be analyzed in the EIR (“scoping”)
- Understand schedule and what happens next
- Meet staff and applicant

WHERE ARE WE NOW?

- Application review process is just starting
- Application received December 18, 2018
- Application completed May 21, 2019
- EIR process started August 16, 2019
- EIR process is a formal process that follows state and local rules – California Environmental Quality Act (CEQA)
- We are currently towards the end of the first formal comment period at the beginning of the EIR process
- Comment period for the “scope” of the EIR is August 16, 2019 to September 16, 2019

EIR PROCESS OVERVIEW



HAS THE EIR BEEN COMPLETED?

- No -- No EIR has been completed
- Preparation of the EIR is underway by County expert consultant
- The document circulating is a required pre-EIR document – NOP/Initial Study
- There are some initial technical analyses that have been prepared
- These studies are being reviewed for adequacy and will be used in preparing the EIR
- Project material can be viewed at:
www.yolonaturalresources.org → under “Quick Links” click “Teichert Shifler Mining and Reclamation Project”

WHAT WILL THE EIR ANALYZE?

- Aesthetics
- Agricultural Resources
- Air Quality
- Greenhouse Gas (GHG) Emissions and Energy
- Biological Resources
- Cultural and Tribal Cultural Resources
- Geology, Soils, and Mineral Resources
- Hazards and Hazardous Materials

WHAT WILL THE EIR ANALYZE?

- Hydrology and Water Quality
- Land Use and Planning
- Noise
- Transportation
- Public Services and Recreation
- Utilities and Service Systems
- Alternatives
- Cumulative Effects and Other Required Sections

ISSUES SCOPED OUT

- Impacts along scenic highways
- Conflicts with agricultural zoning or Williamson Act
- Impacts to forestry resources
- Impacts from use of hazardous materials near a school
- Exposure to noise impacts from air traffic
- Impacts related to population and housing
- Increased demand for schools
- Increased demand for parks and recreation facilities
- Impacts to waste water treatment plants
- Impacts to solid waste capacity
- Wildfire impacts

ESTIMATED SCHEDULE

2019

- 8/16 County releases NOP for public review Aug 16 to Sep 16
- **9/12 EIR Scoping Meeting at Planning Commission (today)**
- 9/16 Scoping NOP comment period closes
- 10/23 Community Workshop
- Late Nov County releases Draft EIR for 46-day review (thru early January 2020)
- Dec-Jan Applicant workshops on project
- Mid Dec Planning Commission meeting on DEIR

2020

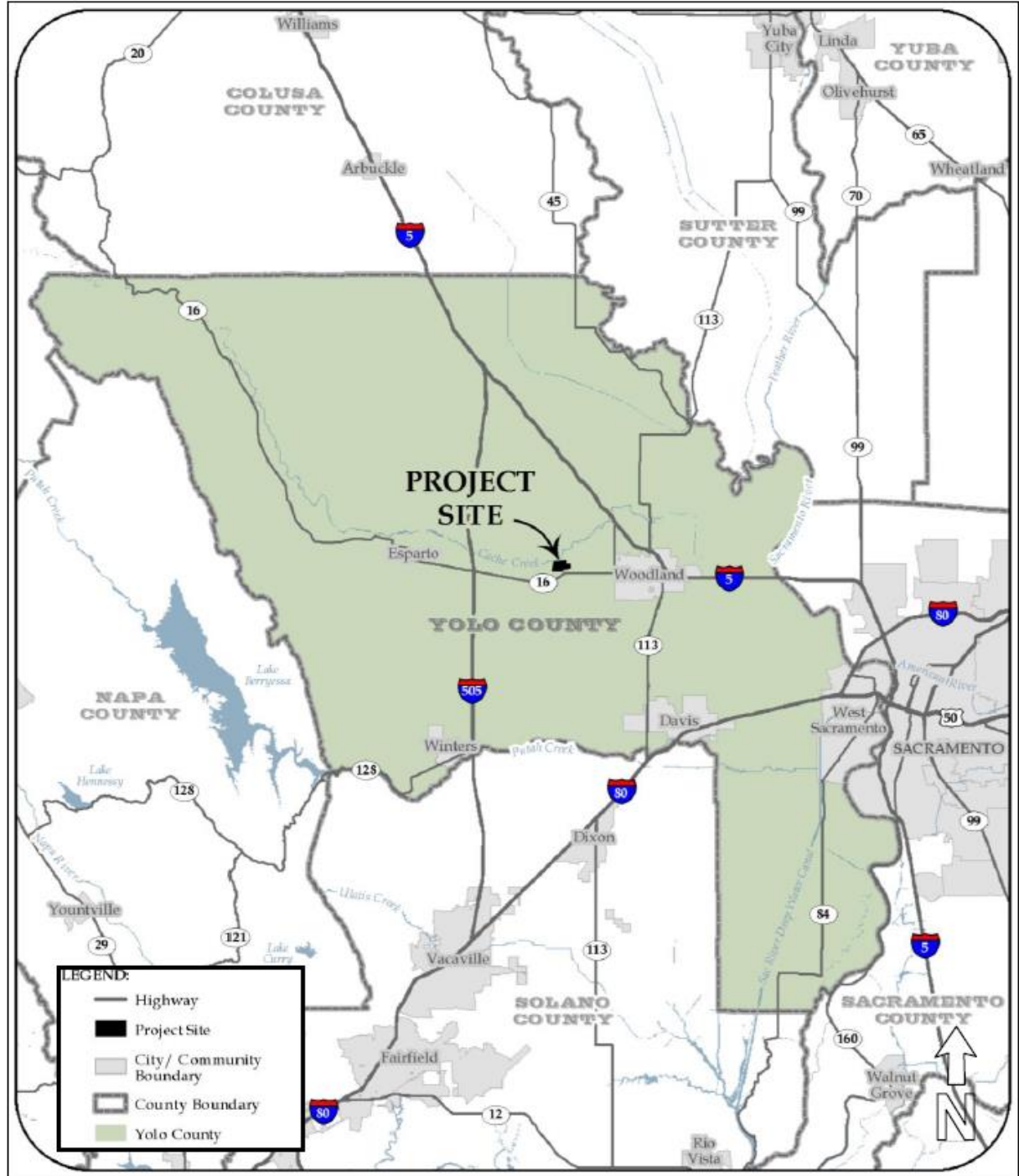
- Early Jan Draft EIR comment period closes
- Early April Release Final EIR
- Late April Planning Commission hearing on project
- Mid May Board of Supervisors hearing on project

COUNTY MINING PROGRAM

- Mining in and along Cache Creek dates back 150 years
- Mining is an important economic driver for the County
- The County mining program was approved in 1996 – Cache Creek Area Plan (CCAP)
 - Governs off-channel mining along Lower Cache Creek
 - Governs creek restoration and Parkway Plan
- The CCAP is supported by and compliant with the County General Plan
- Item 11 on agenda is example of annual CCAP reporting
- Item 13 on agenda is example of required ten-year update of CCAP
- Teichert Shifler project must be consistent with all requirements of the CCAP which are extensive

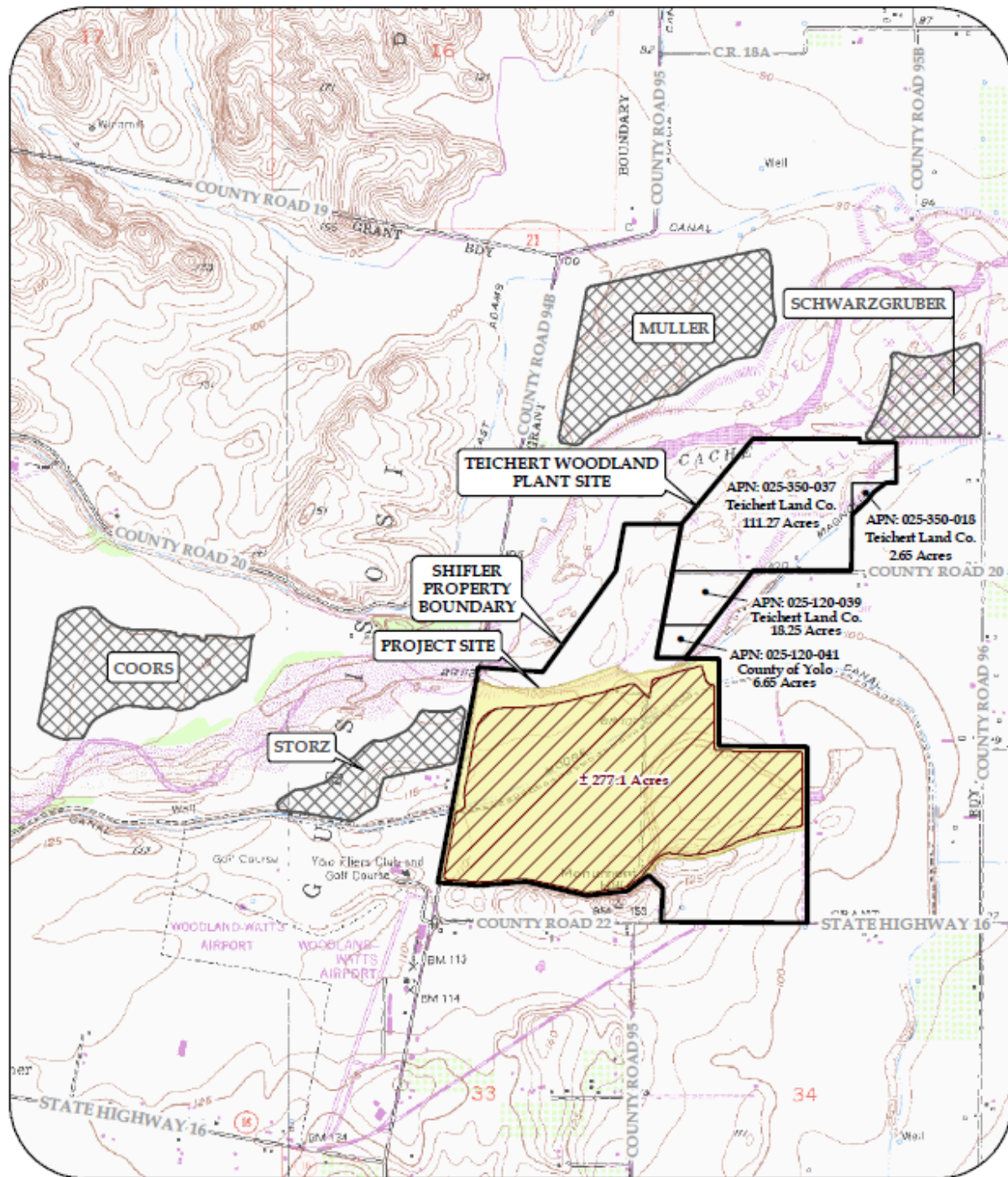
TEICHERT SHIFLER APPLICATION

- Proposed mining on 277 of 319 acres
- Located north of CR 22, east of CR 94B, southwest of existing mining
- 30 year mining permit – two phases – relocation of Moore Canal
- Maximum of 2.6 million tons mined annually (2.2 million tons sold)
- Replaces existing “Woodland” approval (Schwarzgruber property)
- Reallocates existing “Esparto” approval (Reiff property) when mining ends
- Maximum depth 110 feet below ground surface
- Use of existing approved haul roads
- Reclamation to agriculture, lake/pond, habitat








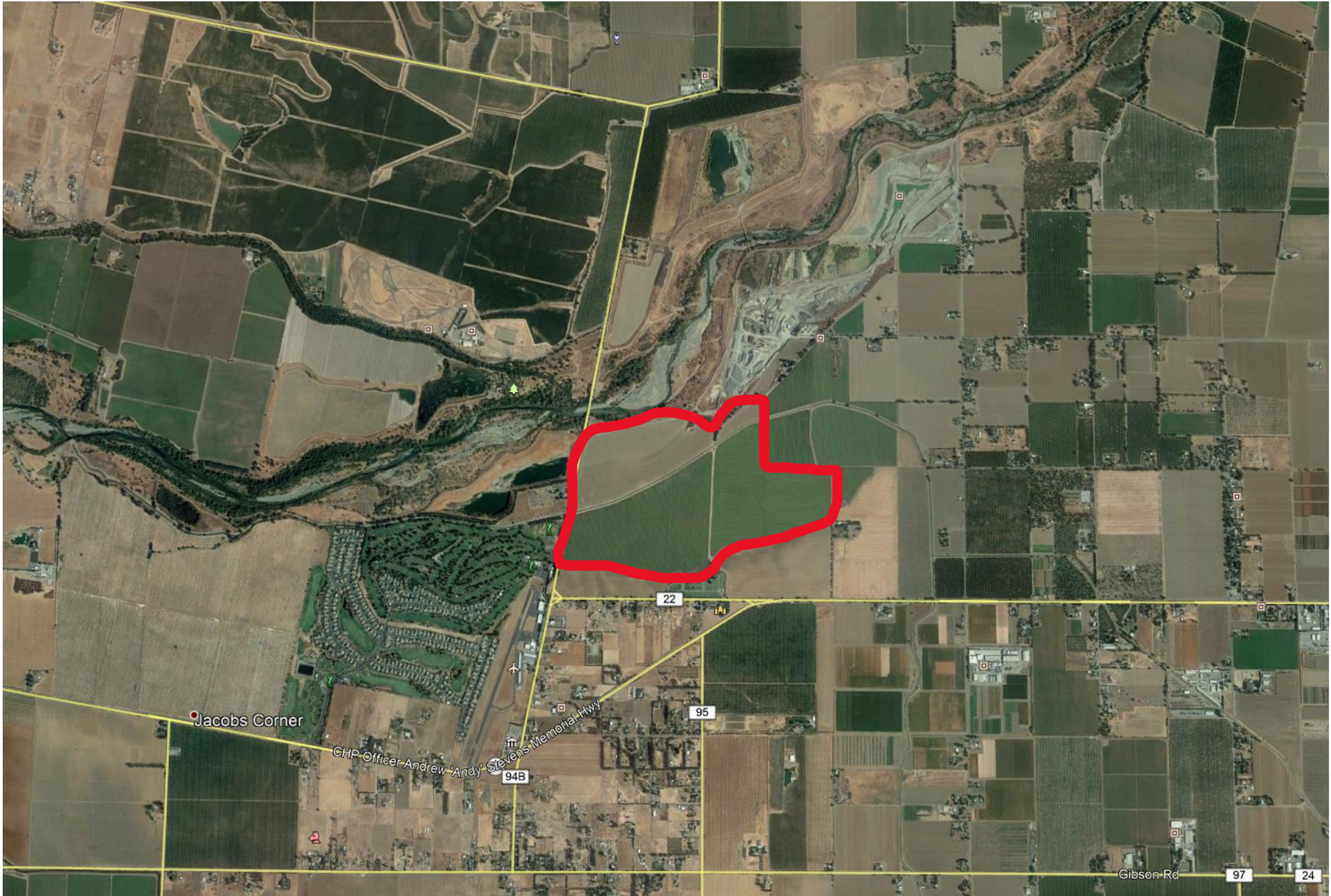
LEGEND:

- Highway
- Project Site
- ▭ City/Community Boundary
- ▭ County Boundary
- Yolo County

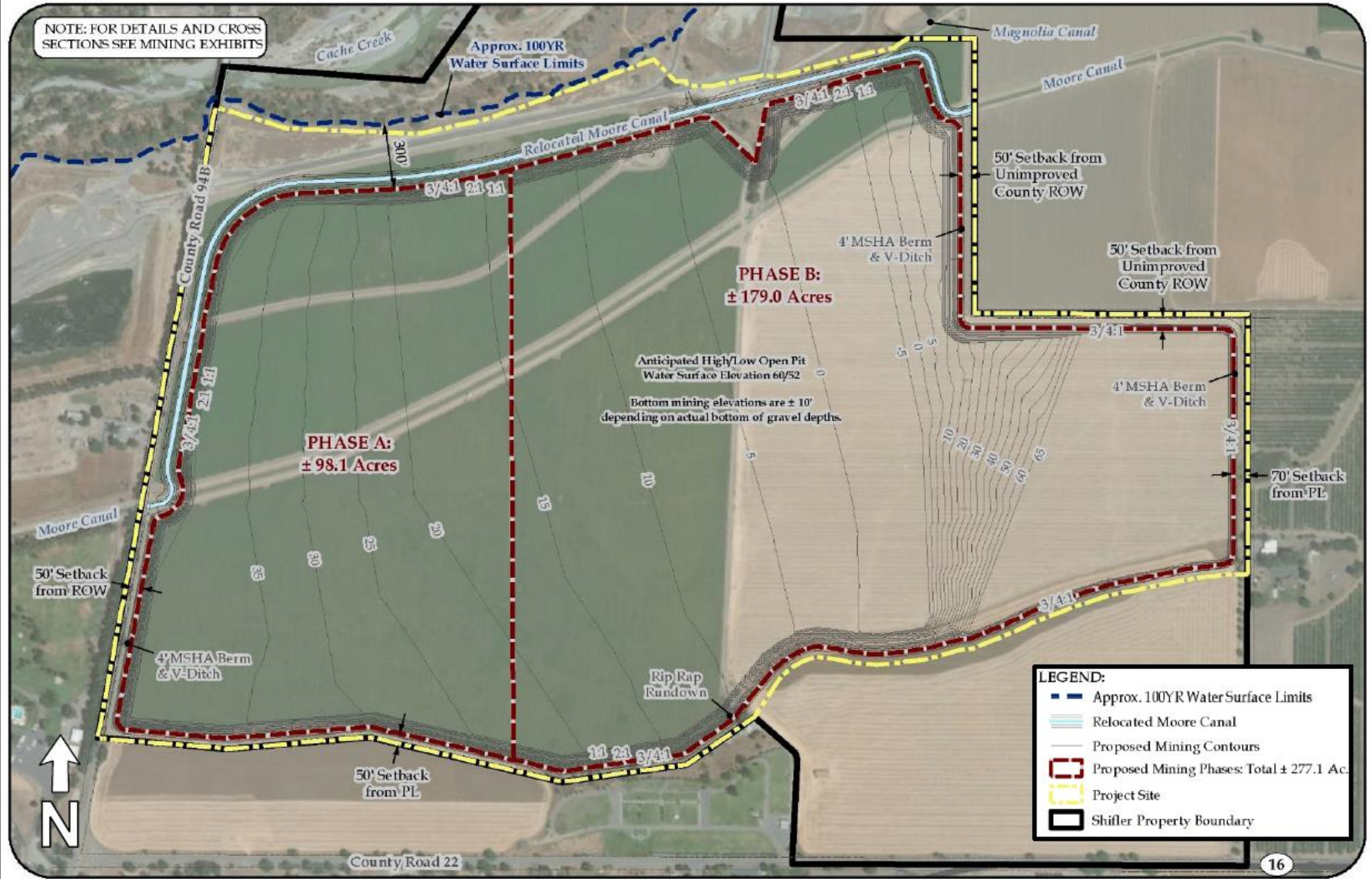


LEGEND:

-  Approved Mining Sites
-  Proposed Mining Boundary
-  Project Site
-  Teichert Woodland Plant Site Parcel Boundaries
-  Shifler & Woodland Plant Site Property Boundaries



NOTE: FOR DETAILS AND CROSS SECTIONS SEE MINING EXHIBITS



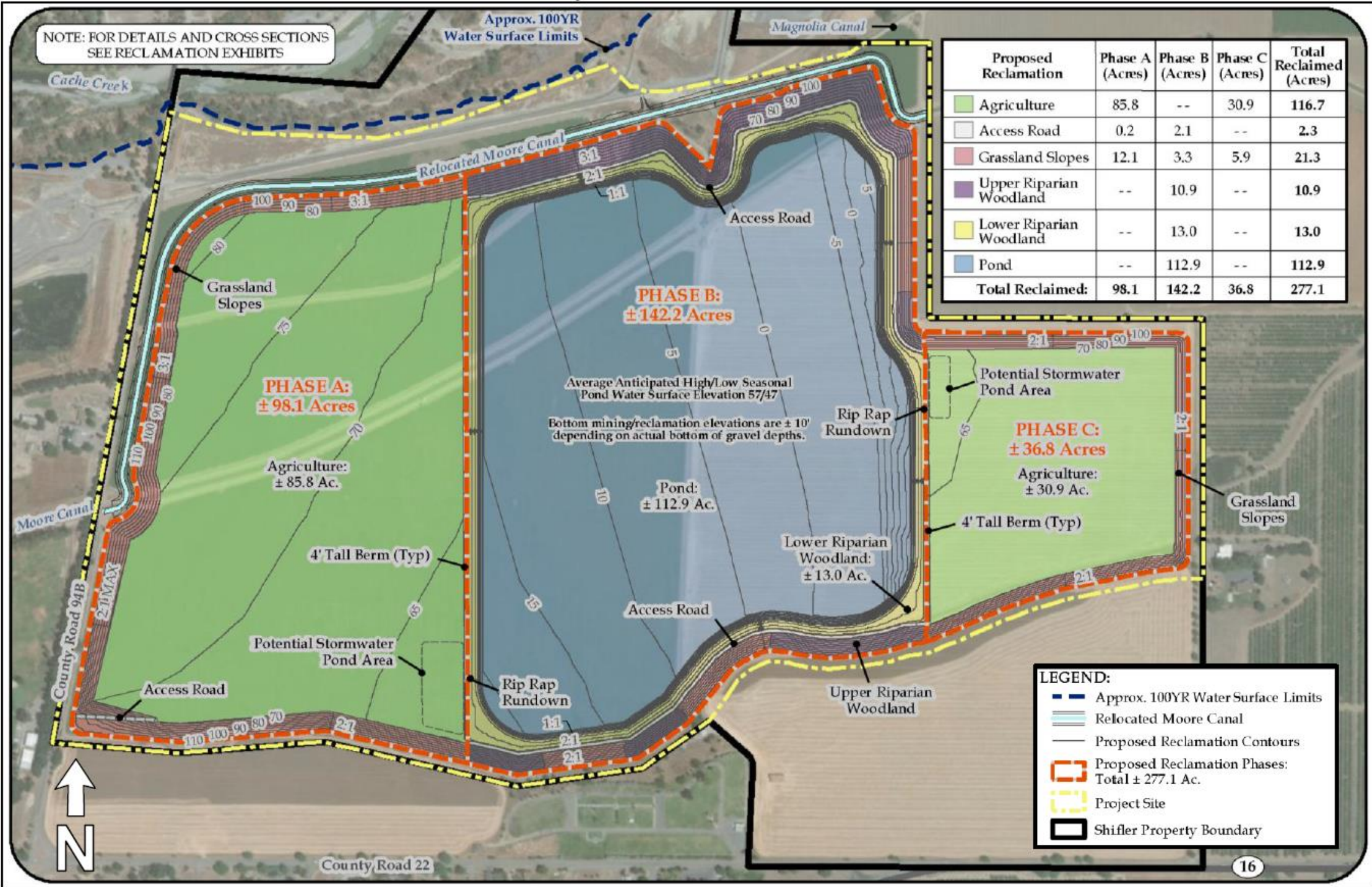
PHASE A:
± 98.1 Acres

PHASE B:
± 179.0 Acres

Anticipated High/Low Open Pit
Water Surface Elevation 60/52
Bottom mining elevations are ± 10'
depending on actual bottom of gravel depths.

- LEGEND:**
- Approx. 100YR Water Surface Limits
 - Relocated Moore Canal
 - Proposed Mining Contours
 - Proposed Mining Phases: Total ± 277.1 Ac.
 - Project Site
 - Shifler Property Boundary

NOTE: FOR DETAILS AND CROSS SECTIONS SEE RECLAMATION EXHIBITS



Proposed Reclamation	Phase A (Acres)	Phase B (Acres)	Phase C (Acres)	Total Reclaimed (Acres)
Agriculture	85.8	--	30.9	116.7
Access Road	0.2	2.1	--	2.3
Grassland Slopes	12.1	3.3	5.9	21.3
Upper Riparian Woodland	--	10.9	--	10.9
Lower Riparian Woodland	--	13.0	--	13.0
Pond	--	112.9	--	112.9
Total Reclaimed:	98.1	142.2	36.8	277.1

LEGEND:

- Approx. 100YR Water Surface Limits
- Relocated Moore Canal
- Proposed Reclamation Contours
- Proposed Reclamation Phases: Total ± 277.1 Ac.
- Project Site
- Shifler Property Boundary

COUNTY APPROVALS

- General Plan Amendment
- Cache Creek Area Plan (CCAP) Amendment
- Rezoning
- Mining Permit Approval
- Reclamation Plan Approval
- Yolo County Code Section 10.4-405 20% Exceedance approval
- Streambank Stabilization Plan
- Flood Hazard Development Permit (FHDP)
- Development Agreement

OVERVIEW OF PROPOSAL

Jason Smith, Project Manager, Teichert Materials

HOW DO I STAY INVOLVED?

- Submit scoping comments by September 16th
- Visit County website to review project information
- Learn more about County's mining program
www.yolonaturalresources.org
- Request to be on the email list
- Attend community workshops and meetings
- Read Draft EIR and submit comments
- County contact: Stephanie Cormier (530) 666-8041
stephanie.cormier@yolocounty.org
- Applicant contact: Jason Smith (916) 484-3317
jsmith@Teichert.com
- Participate in hearings