

Thank you participating in the YCHC deaccessioning process!

- You will review photographs and collection information for each of the items suggested for deaccession via this **Power Point PDF**.
- You will be casting a preliminary vote on the items to retain, remove, or that you are not sure about via the **Survey Monkey Voting Link**.
- This Collections Power Point is for items to be reviewed before the **April 2020** Collections Committee meeting on ~~Tuesday, March 17th at 5:30pm~~.

- As you review each item it is helpful to have one window open with the power point images and one internet browser survey to cast your vote.

1. Should we keep item YO1-C431-12?

- Retain
- Remove
- Not Sure

- The information about each piece is taken from the Past Perfect database record.
- If you would like to examine an item in person, the curator is able to pull it for the next meeting.
- The next slide starts the power point of items to be reviewed and voted on.

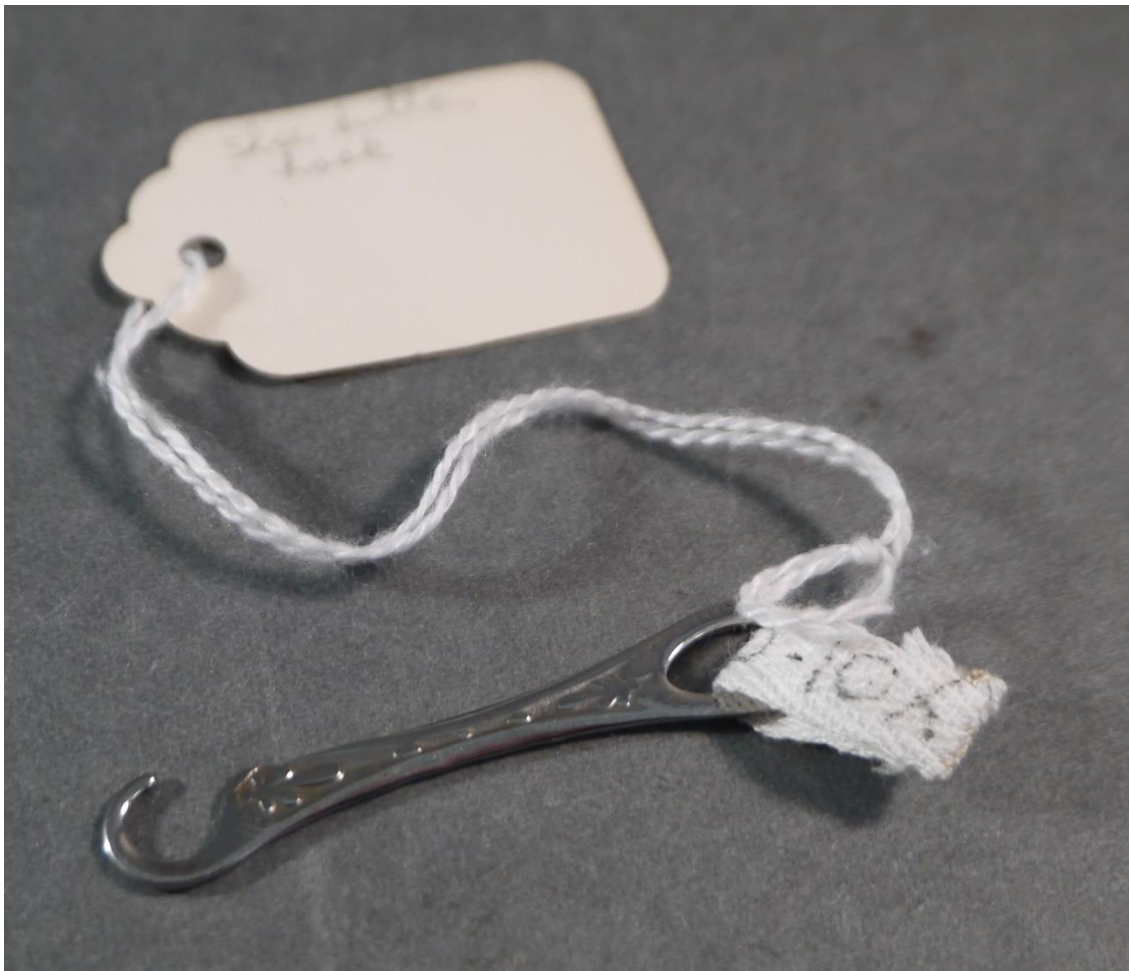


Accession #: Y01-190-2

Medium: Metal

Description: Metal container

Recommendation: Lacks context/historical relevance

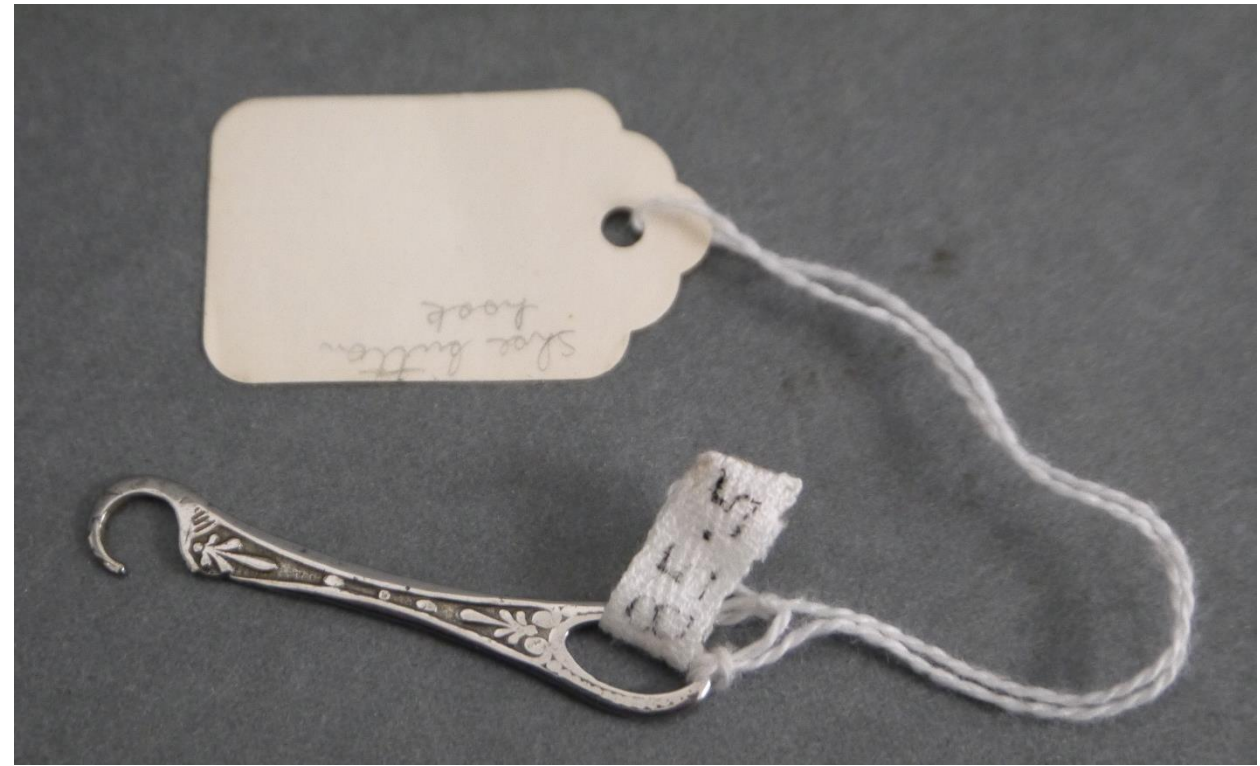


Accession #: Y01-685-5

Medium: Metal

Description: Shoe hook

Recommendation: Duplicate





Accession #: Y01-454-52

Medium: Metal

Description: Tweezers

Recommendation: Duplicate

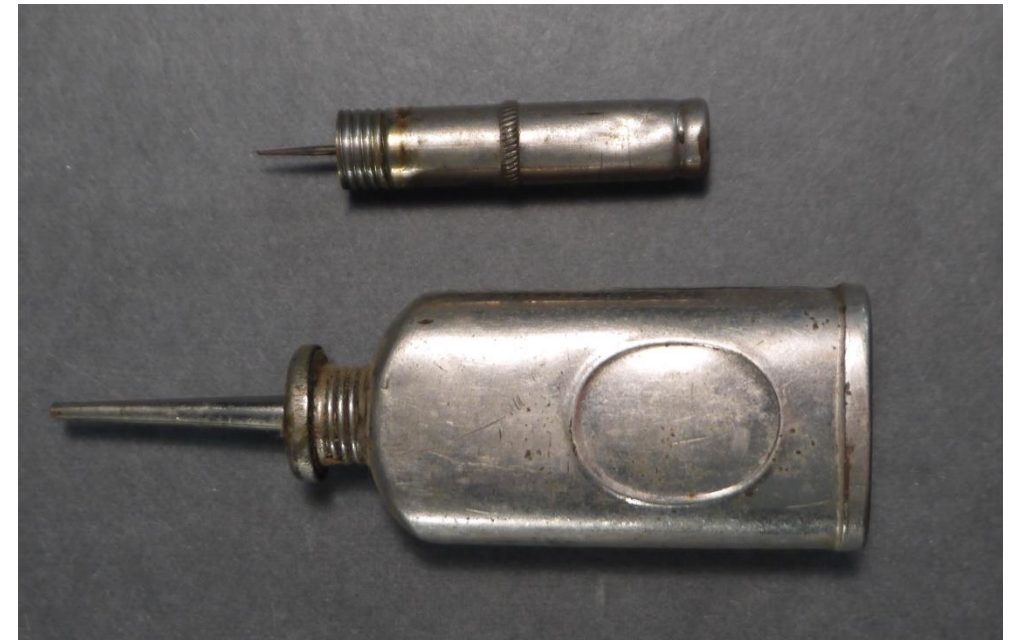
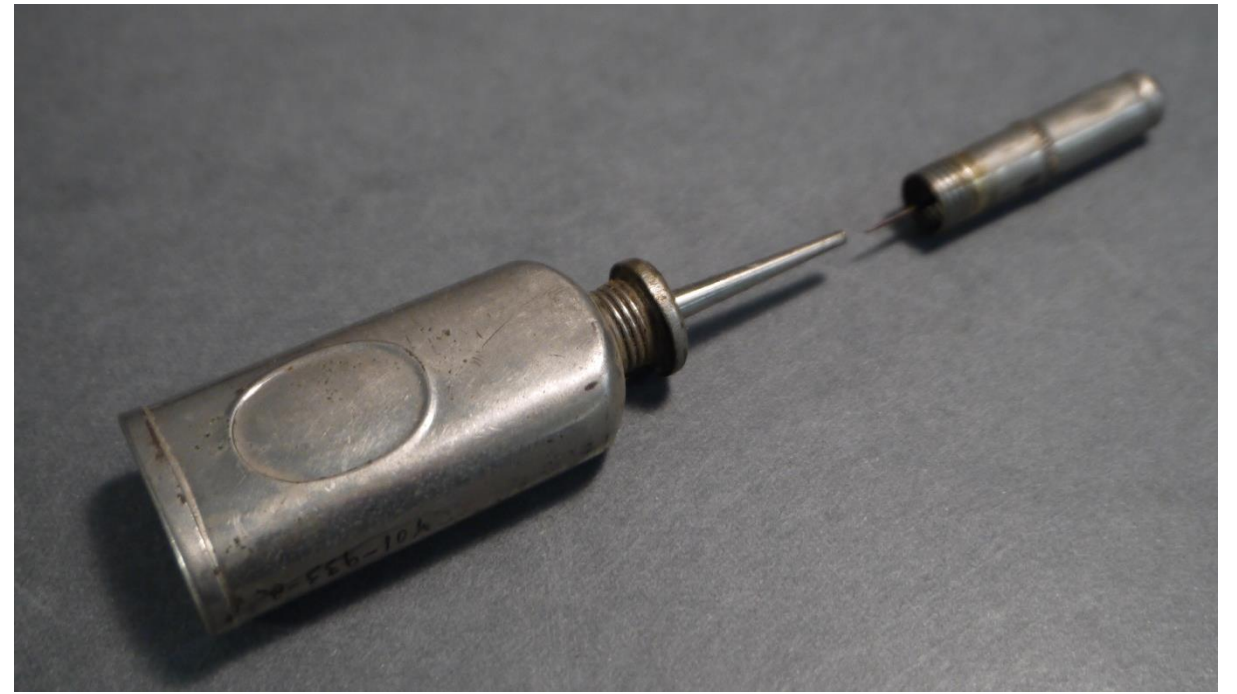


Accession #: Y01-169-10

Medium: Plastic

Description: Round plastic cosmetics box

Recommendation: Duplicate



Accession #: Y01-933-2

Medium: Metal

Description: Metal container

Recommendation: Lacks context/historical relevance



Accession #: Y01-710-8

Medium: Plastic

Description: Crochet hook

Recommendation: Duplicate





Accession #: Y01-895-14C

Medium: Metal

Description: Wrench

Recommendation: Duplicate





Accession #: Y01-895-6

Medium: Metal

Description: Wrench

Recommendation: Duplicate



Accession #: Y01-895-7

Medium: Metal

Description: Wrench

Recommendation: Duplicate



Accession #: Y01-895-8

Medium: Metal

Description: Wrench

Recommendation: Duplicate



Accession #: Y01-895-9

Medium: Metal

Description: Wrench

Recommendation: Duplicate



Accession #: Y01-895-10

Medium: Metal

Description: Wrench

Recommendation: Duplicate



Accession #: Y01-895-11

Medium: Metal

Description: Wrench

Recommendation: Duplicate



Accession #: Y01-895-12

Medium: Metal

Description: Wrench

Recommendation: Duplicate



Accession #: Y01-895-13

Medium: Metal

Description: Wrench

Recommendation: Duplicate



Accession #: Y01-895-14

Medium: Metal

Description: Wrench

Recommendation: Duplicate



Accession #: Y01-895-15

Medium: Metal

Description: Wrench

Recommendation: Duplicate



Accession #: Y01-834-7

Medium: Metal, wood

Description: Rake

Recommendation: Duplicate



Accession #: Y01-C226-5

Medium: Metal, wood

Description: Shepherds crook

Recommendation: Not historically relevant to property narrative, out of scope



Accession #: Y01-661-51

Medium: Metal, wood

Description: Blacksmith scrapers

Recommendation: Lacks historical relevance, poor condition



Accession #: Y01-21-260

Medium: Wood, glass, textile

Description: Box with glass lid and blue cushioned interior

Recommendation: Poor condition, lacks relevance



Accession #: Y01-336-16

Medium: Paper, textile

Description: Small round box, fabric coating

Recommendation: Poor condition, lacks historical relevance



Accession #: Y01-587-3A/B

Medium: Wood, metal

Description: Tobacco pipe chamber, mouthpiece

Recommendation: Poor condition



Accession #: Y01-587-5

Medium: Wood, metal

Description: Tobacco pipe chamber

Recommendation: Poor condition, partial item

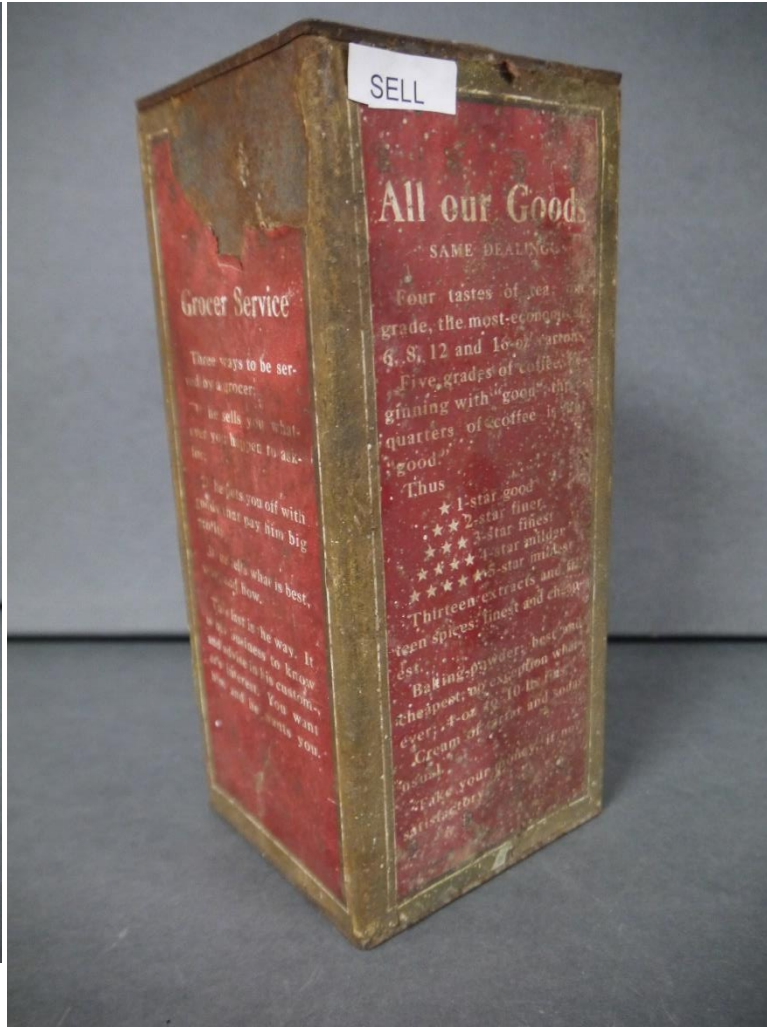
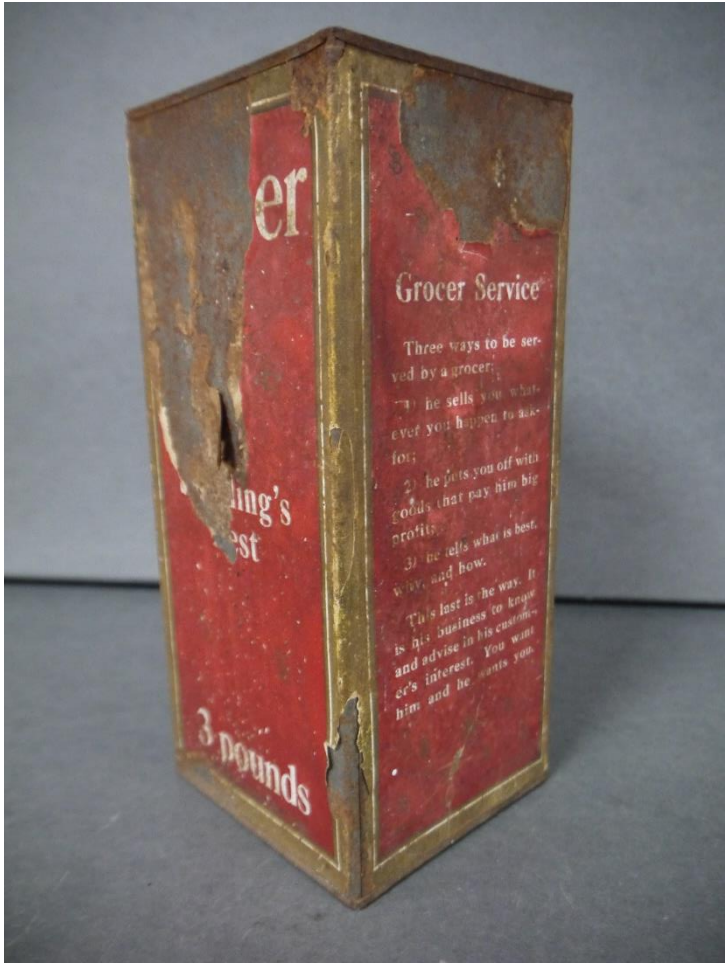


Accession #: Y01-443-27

Medium: Metal

Description: Small rectangular box, with lid

Recommendation: Poor condition, lacks relevance



Accession #: Y01-10x59-21

Medium: Metal, paper

Description: Schilling pepper cannister

Recommendation: Poor condition

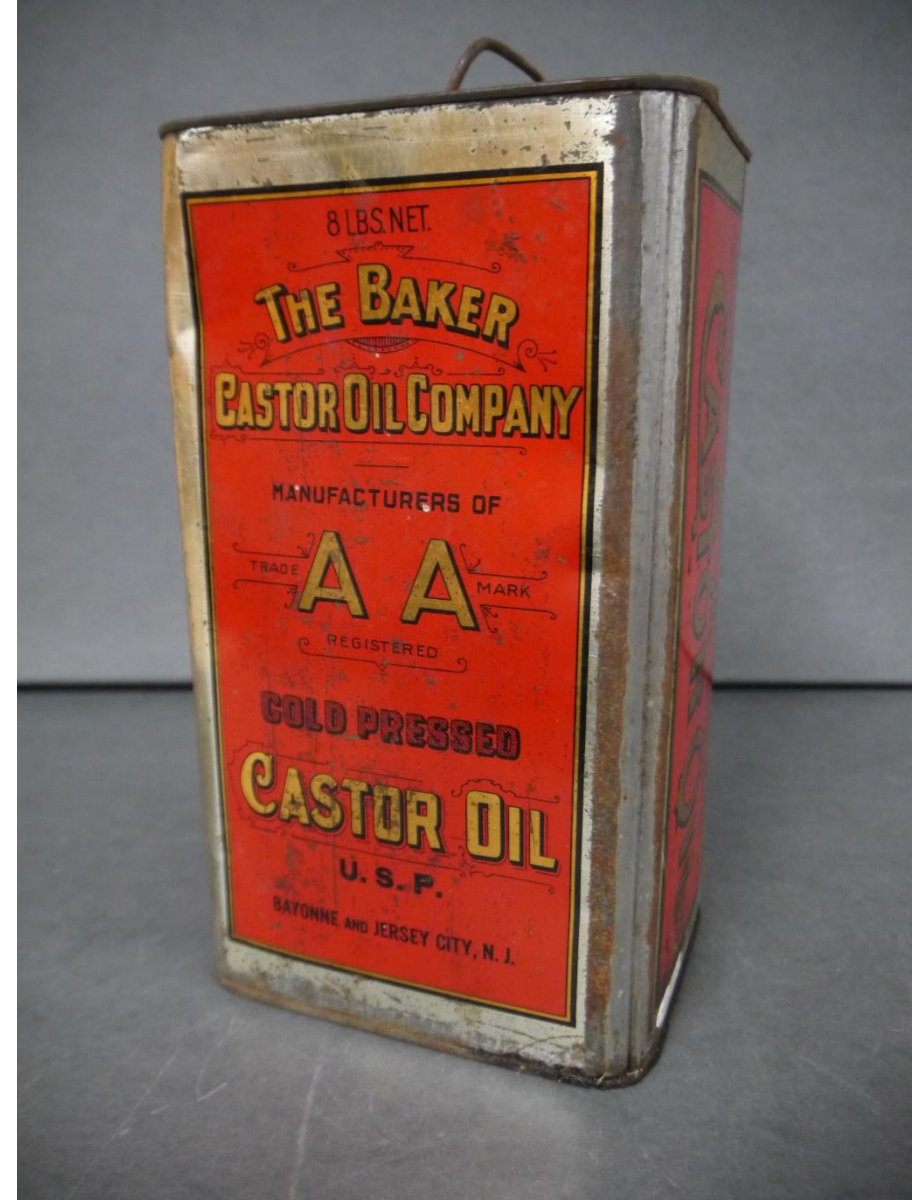


Accession #: Y01-C274-12

Medium: Metal

Description: G.N.M club cannister lid

Recommendation: partial item



Accession #: Y01-57-1

Medium: Metal

Description: The Baker Castor Oil company, oil cannister (full)

Recommendation: Hazardous/organic material



Accession #: Y01-291-32

Medium: Metal, paper

Description: Scotch snuff container

Recommendation: Hazardous/organic material



Accession #: Y01-263-1

Medium: Metal

Description: Calumet baking cannister

Recommendation: Poor condition

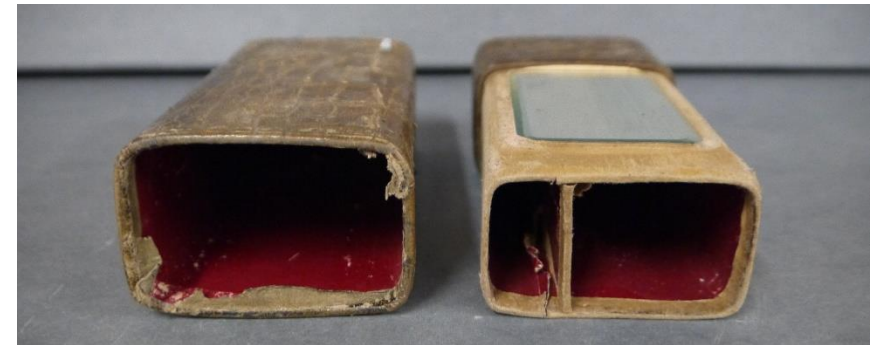


Accession #: Y01-400-3

Medium: Textile, glass

Description: Faux alligator skin box, with interior mirror

Recommendation: Poor condition, lacks historical relevance





Accession #: Y01-10x22-4

Medium: Metal, wood

Description: Auger with wood handle

Recommendation: Poor condition





Accession #: Y01-948-18

Medium: Metal

Description: Agricultural pull

Recommendation: Duplicate





Accession #: Y01-C67

Medium: Metal, wood

Description: Crane pull/hook

Recommendation: Duplicate



Accession #: Y01-981-1

Medium: Metal

Description: Kerosene cannister

Recommendation: Hazardous material





Accession #: Y01-C172-10

Medium: Metal

Description: Crescent wrench

Recommendation: Duplicate



Accession #: Y01-C226-2

Medium: Metal

Description: Monkey wrench

Recommendation: Duplicate



Accession #: Y01-C197-10

Medium: Metal

Description: Wrench/engine crank

Recommendation: Duplicate





Accession #: Y01-92-5

Medium: Metal, wood

Description: Curling iron

Recommendation: Duplicate





Accession #: Y01-661-40

Medium: Wood, metal

Description: Hog scraper

Recommendation: Duplicate





Accession #: Y01-166-4

Medium: Bone

Description: Cow skull

Recommendation: Lacks historical relevance



Accession #: Y01-320-1

Medium: Metal

Description: Large enamel pot

Recommendation: Duplicate, poor condition



Accession #: Y01-C274-16

Medium: Metal

Description: Bundt cake pan

Recommendation: Duplicate



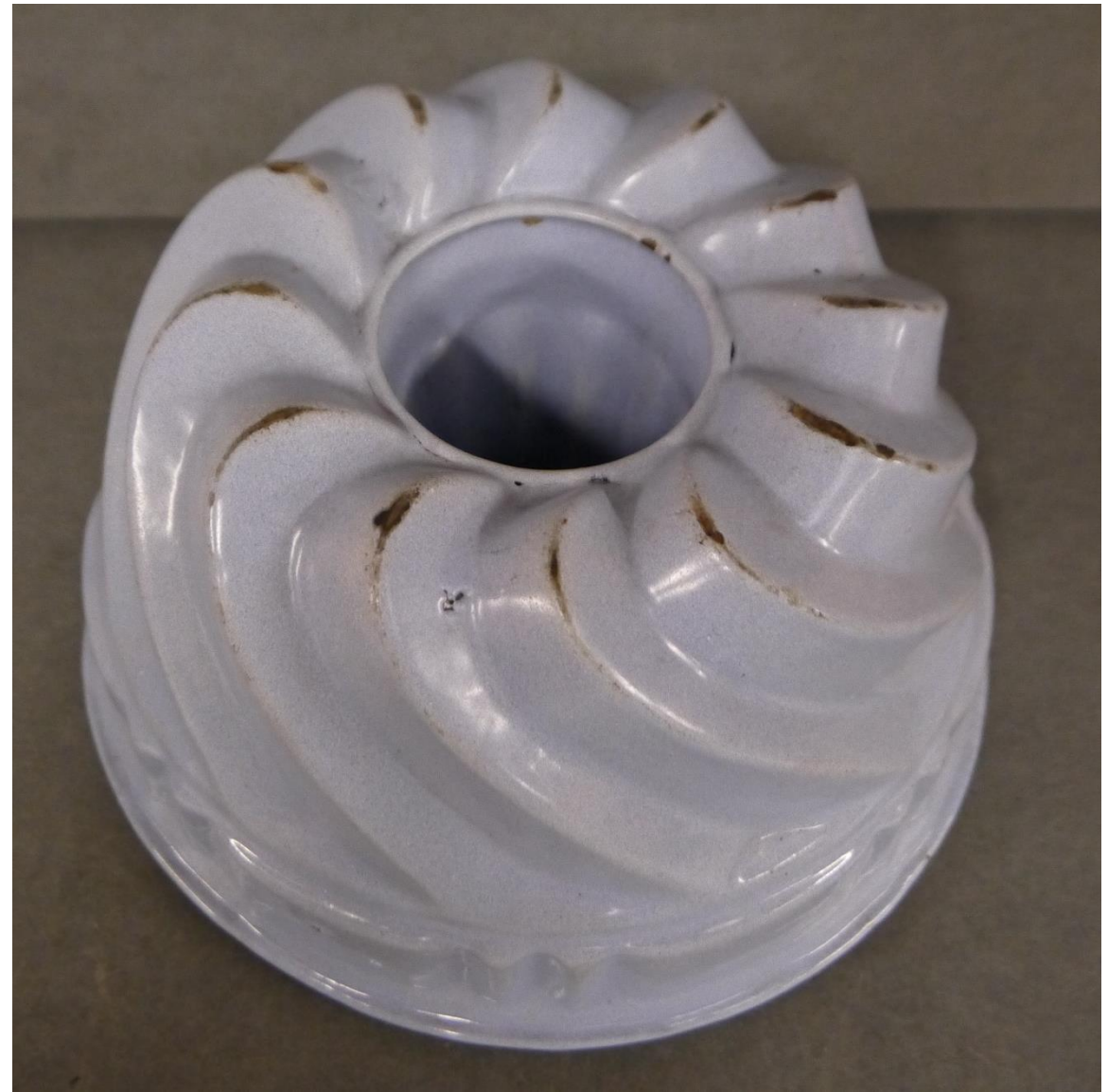


Accession #: Y01-710-2

Medium: Metal

Description: Decorated bundt cake pan, enameled

Recommendation: Duplicate





Accession #: Y01-235-5

Medium: Metal

Description: Enameled metal tea cup

Recommendation: Duplicate



Accession #: Y01-421-11

Medium: Metal

Description: Enameled metal sauce pan

Recommendation: Duplicate



Accession #: Y01-25-103

Medium: Metal, wood

Description: Cake cutting board

Recommendation: Deteriorating, organic material

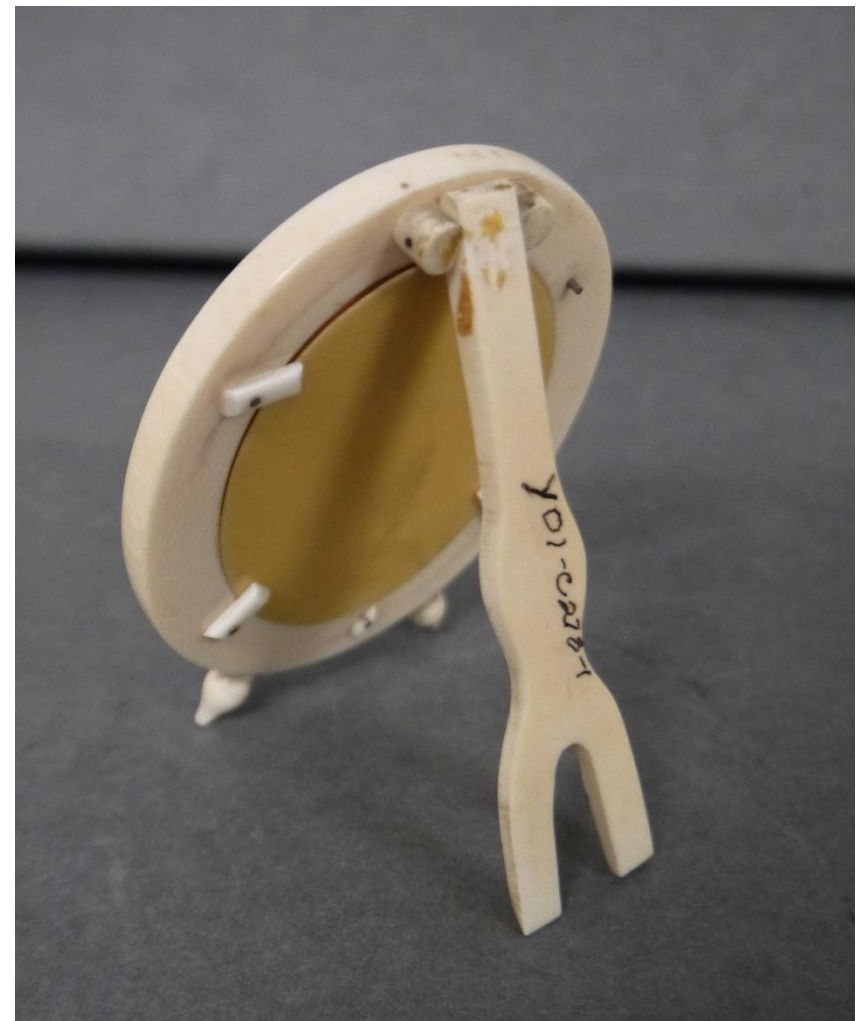


Accession #: Y01-557-P1/P2

Medium: Metal

Description: Batter beater attachments

Recommendation: Duplicate



Accession #: Y01-C278-1

Medium: Plastic, glass

Description: Small framed photograph

Recommendation: Lacks context/historical reevance



Accession #: Y01-263-2

Medium: Metal

Description: W.E. Garrett & Sons Snuff container

Recommendation: Organic material/hazardous, lacks relevance



Accession #: Y01-C200-11

Medium: Paper, metal

Description: Cardboard box of electrical fuses

Recommendation: out of scope



Accession #: Y01-C200-12

Medium: Paper, glass, metal

Description: Metropolitan electric fuse plug

Recommendation: Out of scope, poor condition



Accession #: Y01-470-37

Medium: Textiles

Description: Lace embedded handkerchief

Recommendation: Duplicate



Accession #: Y01-470-38

Medium: Textiles

Description: Embroidered handkerchief

Recommendation: Duplicate



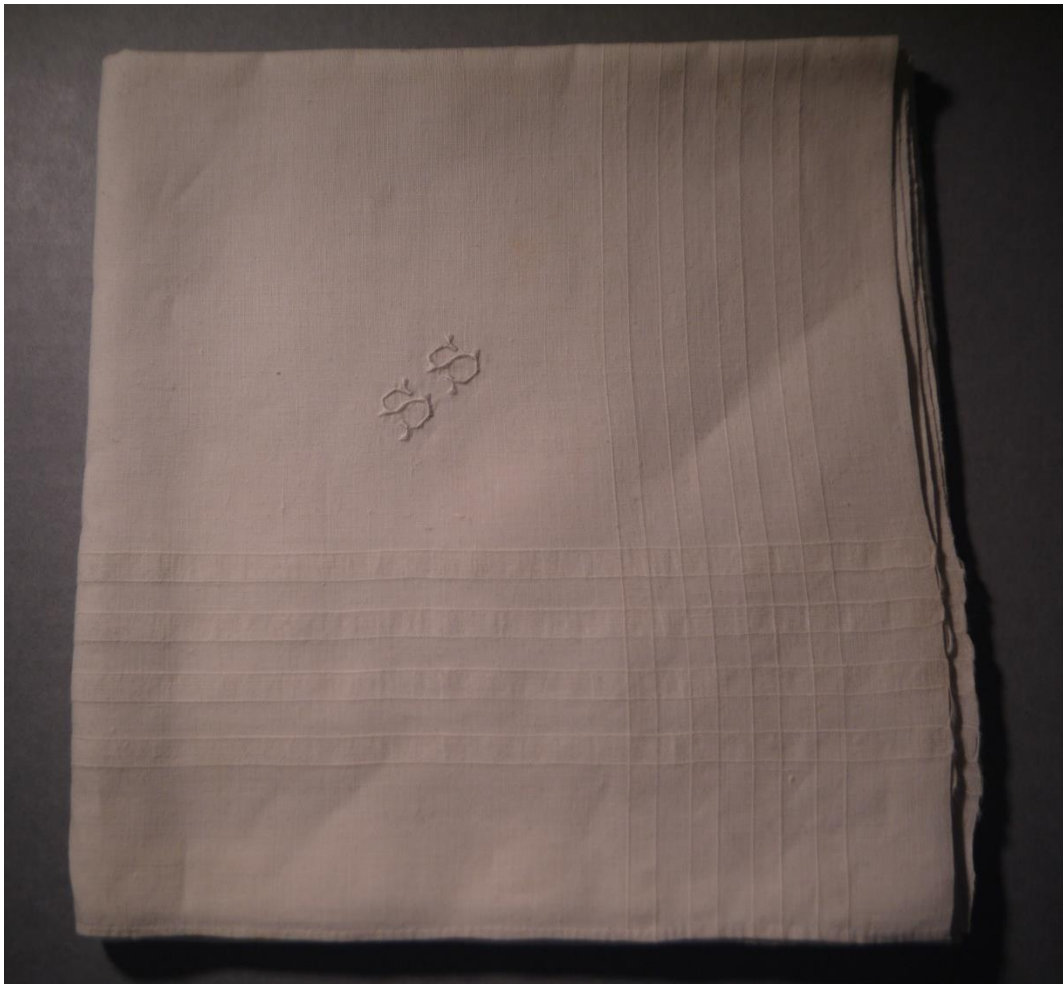
Accession #: Y01-470-39

Medium: Textiles

Description: Embroidered handkerchief

Recommendation: Duplicate



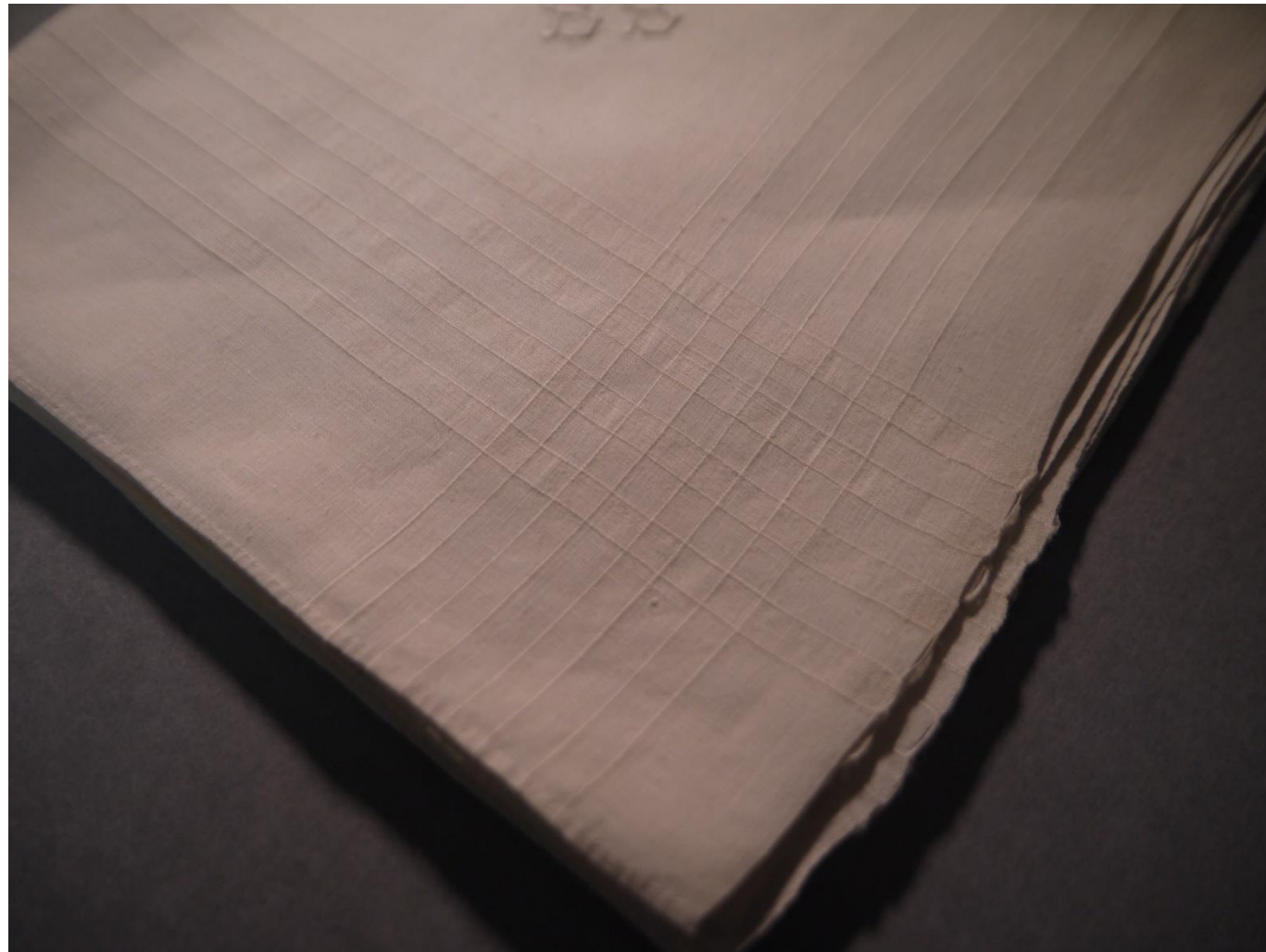


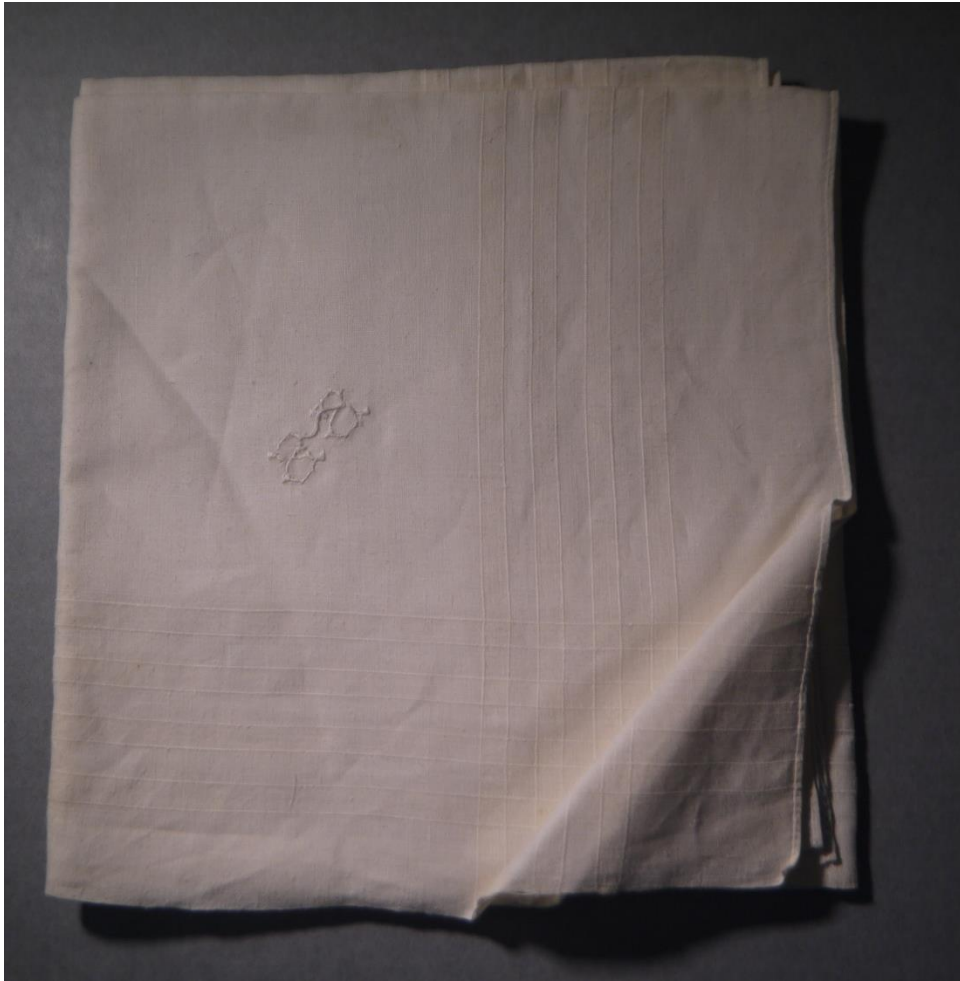
Accession #: Y01-305-13

Medium: Textiles

Description: Embroidered handkerchief

Recommendation: Duplicate





Accession #: Y01-305-14

Medium: Textiles

Description: Embroidered handkerchief

Recommendation: Duplicate





Accession #: Y01-849-32A

Medium: Textiles

Description: Greece map handkerchief

Recommendation: Out of scope



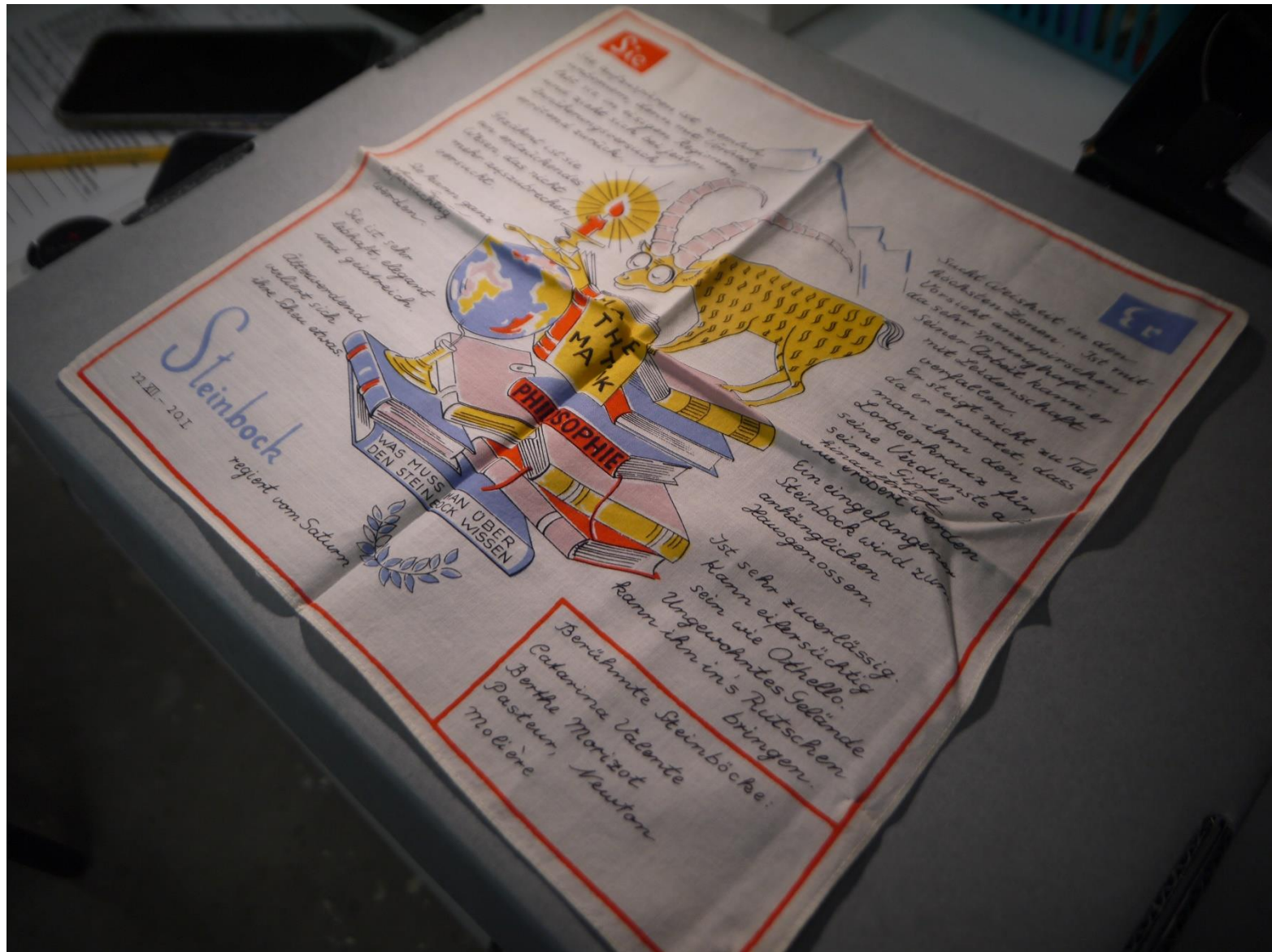


Accession #: Y01-849-32B

Medium: Textiles

Description: Verseau illustrated handkerchief

Recommendation: Out of scope



Accession #: Y01-849-32C

Medium: Textiles

Description: Steinbock illustrated handkerchief

Recommendation: Out of scope



Accession #: Y01-849-32D

Medium: Textiles

Description: Canaria embroidered handkerchief

Recommendation: Out of scope

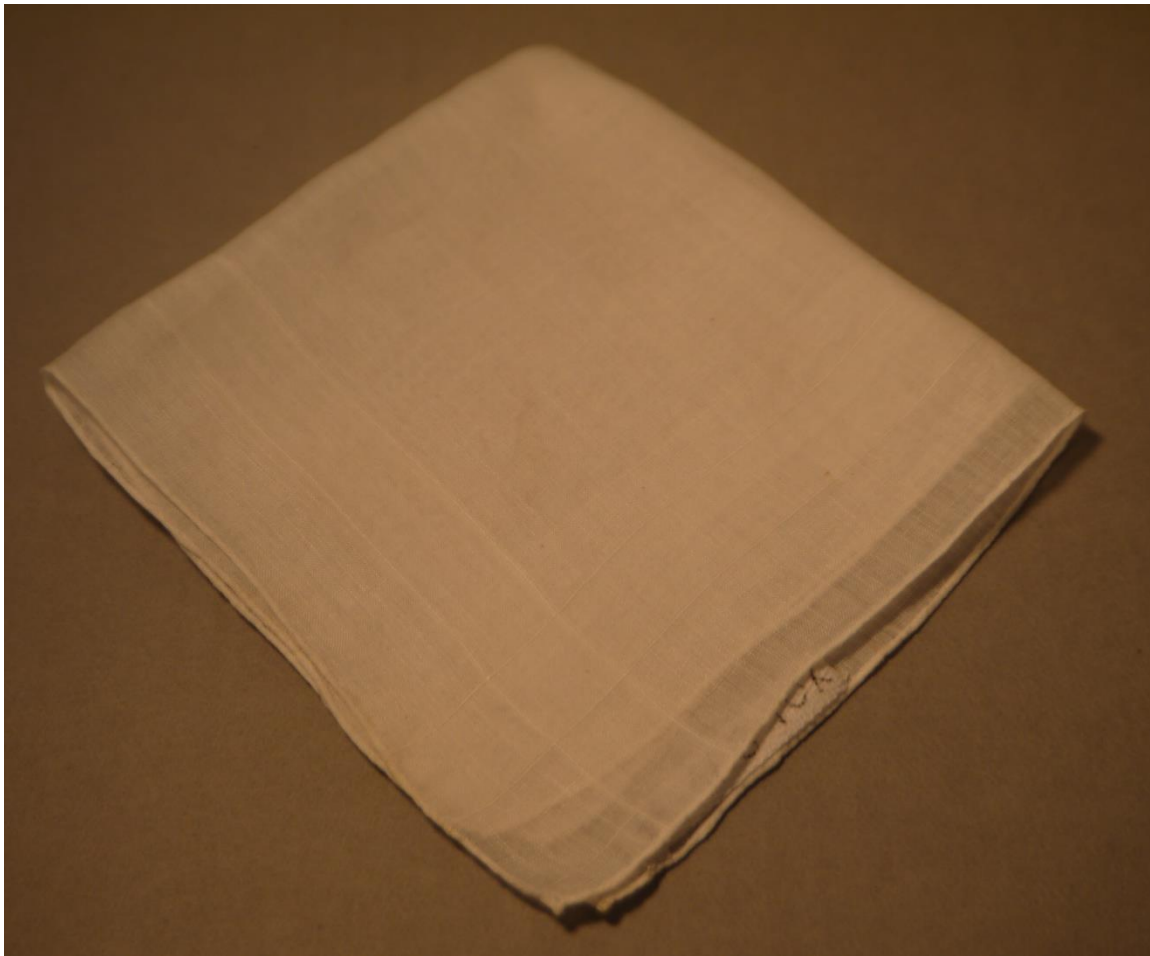


Accession #: Y01-849-31E

Medium: Textiles

Description: Embroidered handkerchief

Recommendation: Duplicate

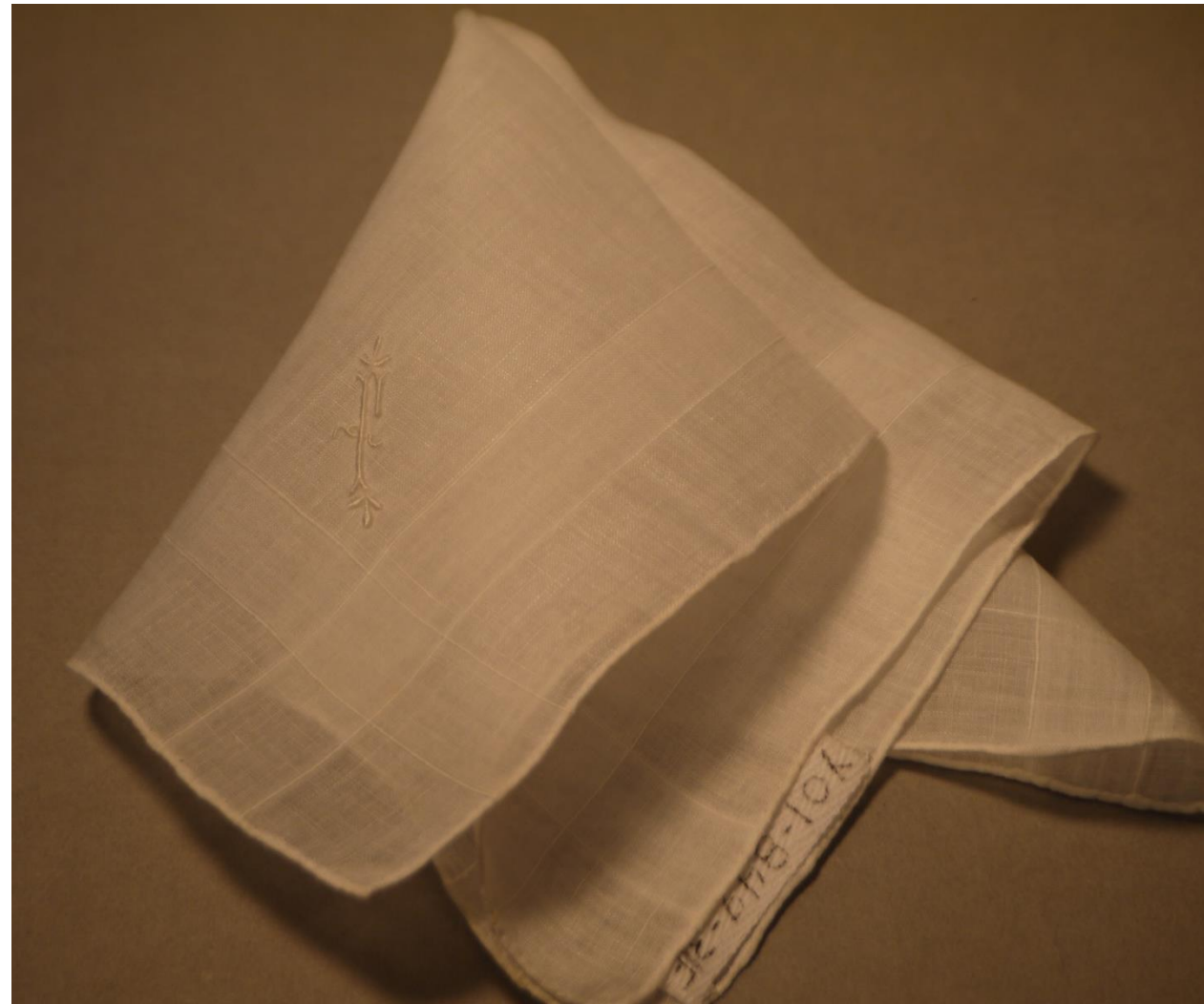


Accession #: Y01-849-31F

Medium: Textiles

Description: White handkerchief

Recommendation: Duplicate





Accession #: Y01-849-31G

Medium: Textiles

Description: Embroidered handkerchief

Recommendation: Duplicate

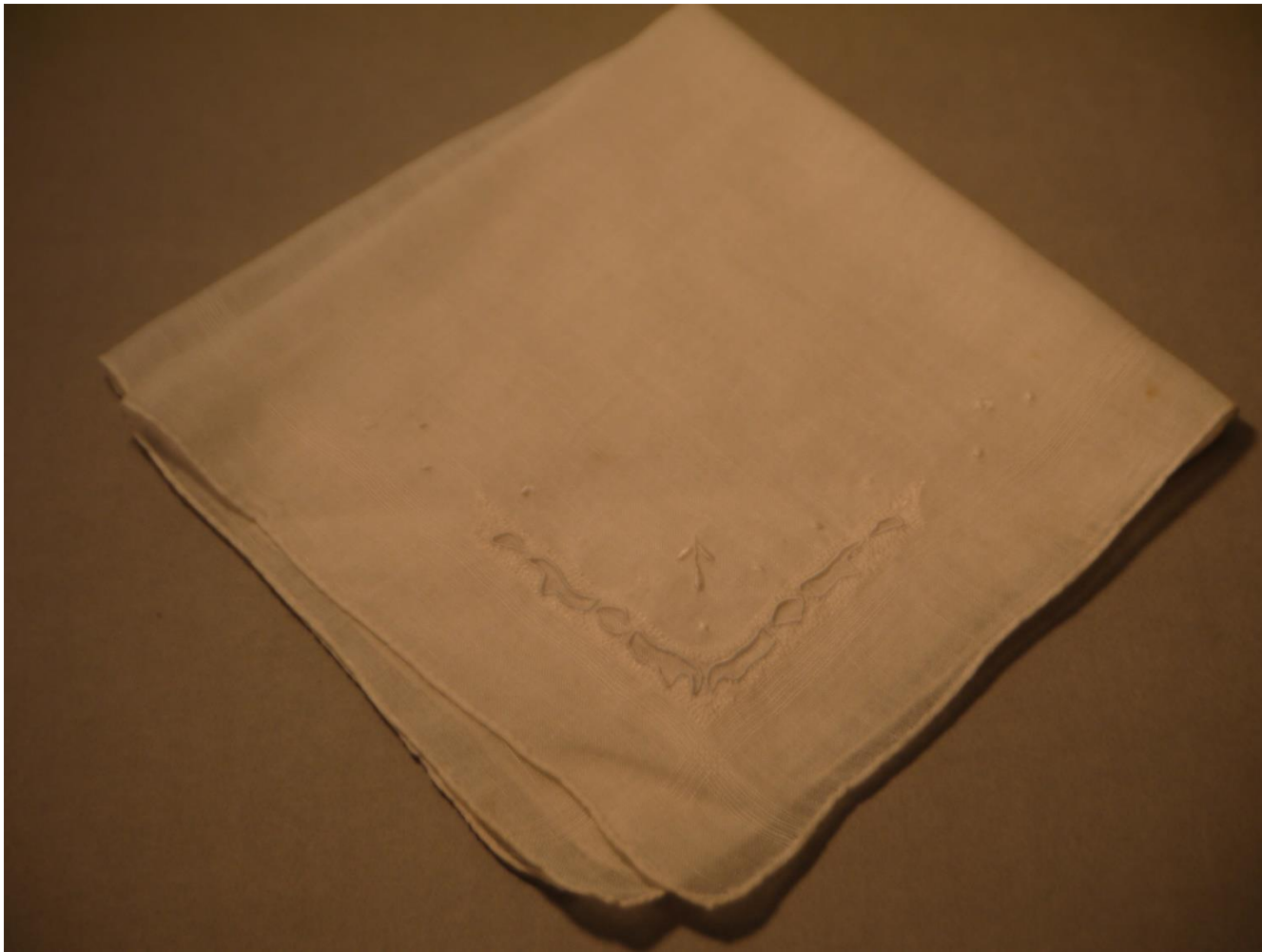


Accession #: Y01-849-31D

Medium: Textiles

Description: White handkerchief

Recommendation: Duplicate

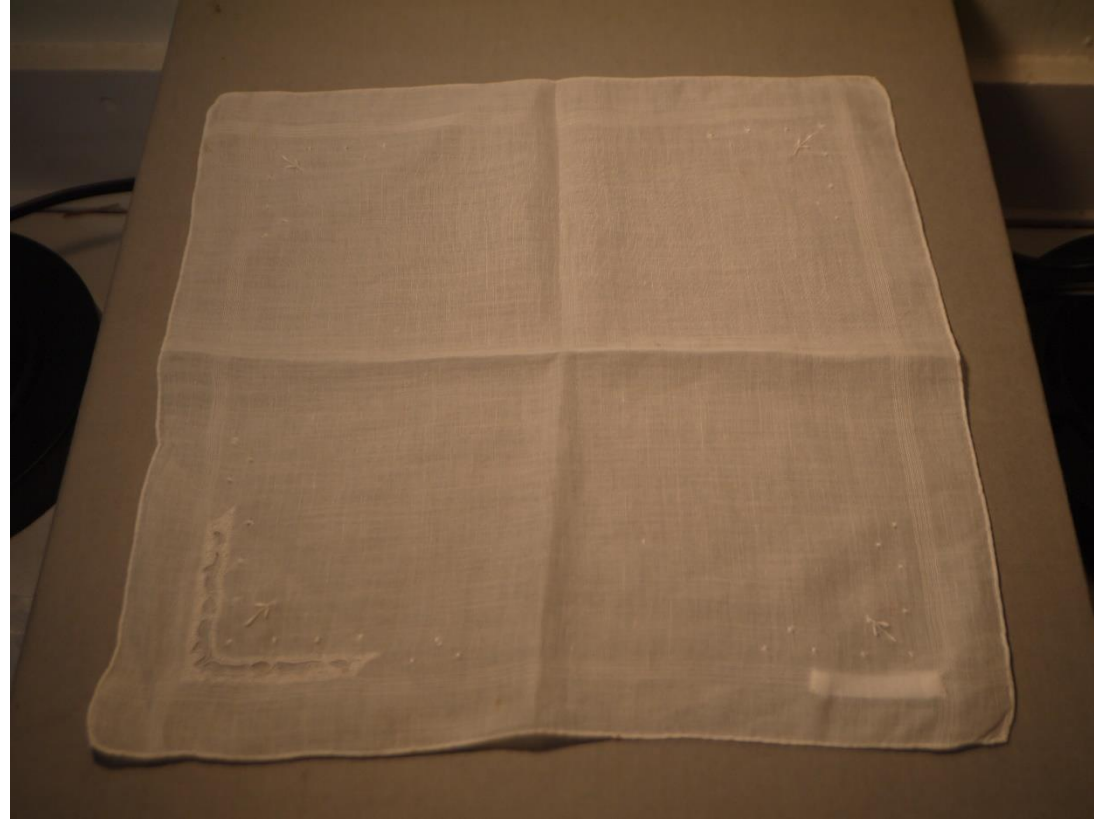


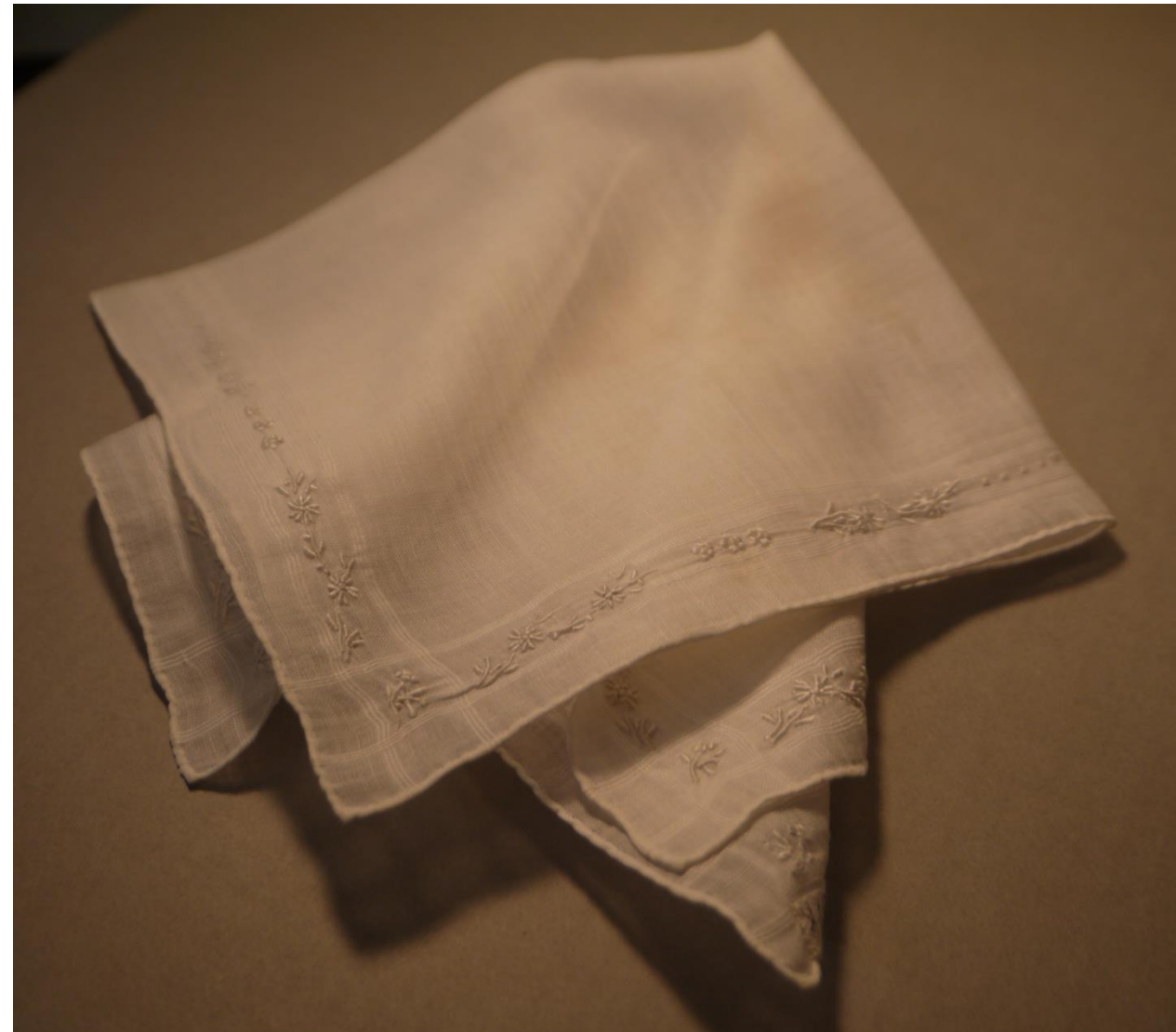
Accession #: Y01-849-31B

Medium: Textiles

Description: White embossed handkerchief

Recommendation: Duplicate



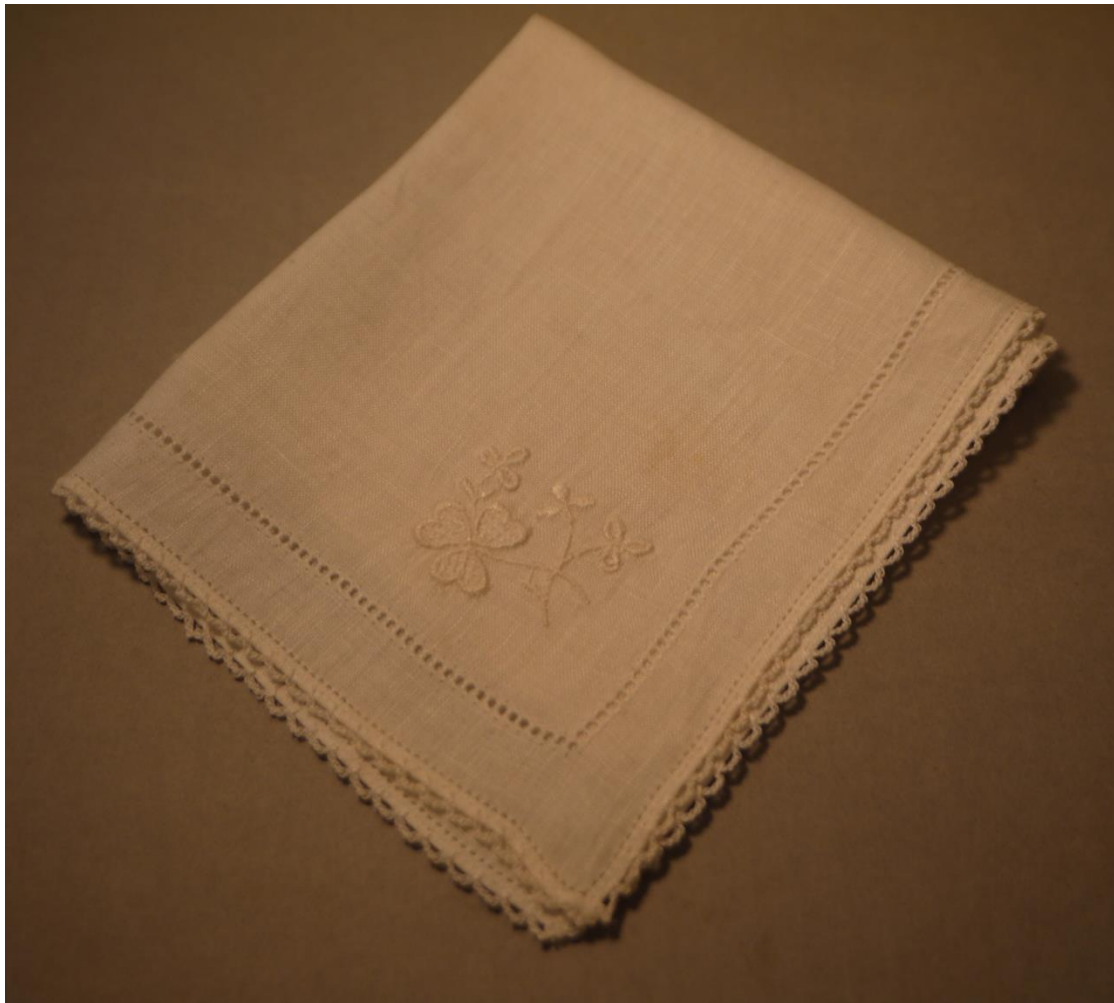


Accession #: Y01-849-31K

Medium: Textiles

Description: Embroidered handkerchief

Recommendation: Duplicate



Accession #: Y01-849-311

Medium: Textiles

Description: white embroidered handkerchief, with scallop edge

Recommendation: Duplicate



Accession #: Y01-849-31M

Medium: Textiles

Description: embroidered handkerchief

Recommendation: Duplicate





Accession #: Y01-469-8

Medium: Textiles

Description: Handkerchief with lace edge

Recommendation: Duplicate, poor condition



Accession #: Y01-613-1

Medium: Textiles

Description: Embroidered handkerchief

Recommendation: Duplicate



Accession #: Y01-542-33

Medium: Textiles

Description: Lace handkerchief

Recommendation: Duplicate, lace color has yellowed



Accession #: Y01-22-201-B

Medium: Textiles

Description: White handkerchief

Recommendation: Duplicate



Accession #: Y01-310-17

Medium: Textiles

Description: White handkerchief

Recommendation: Duplicate



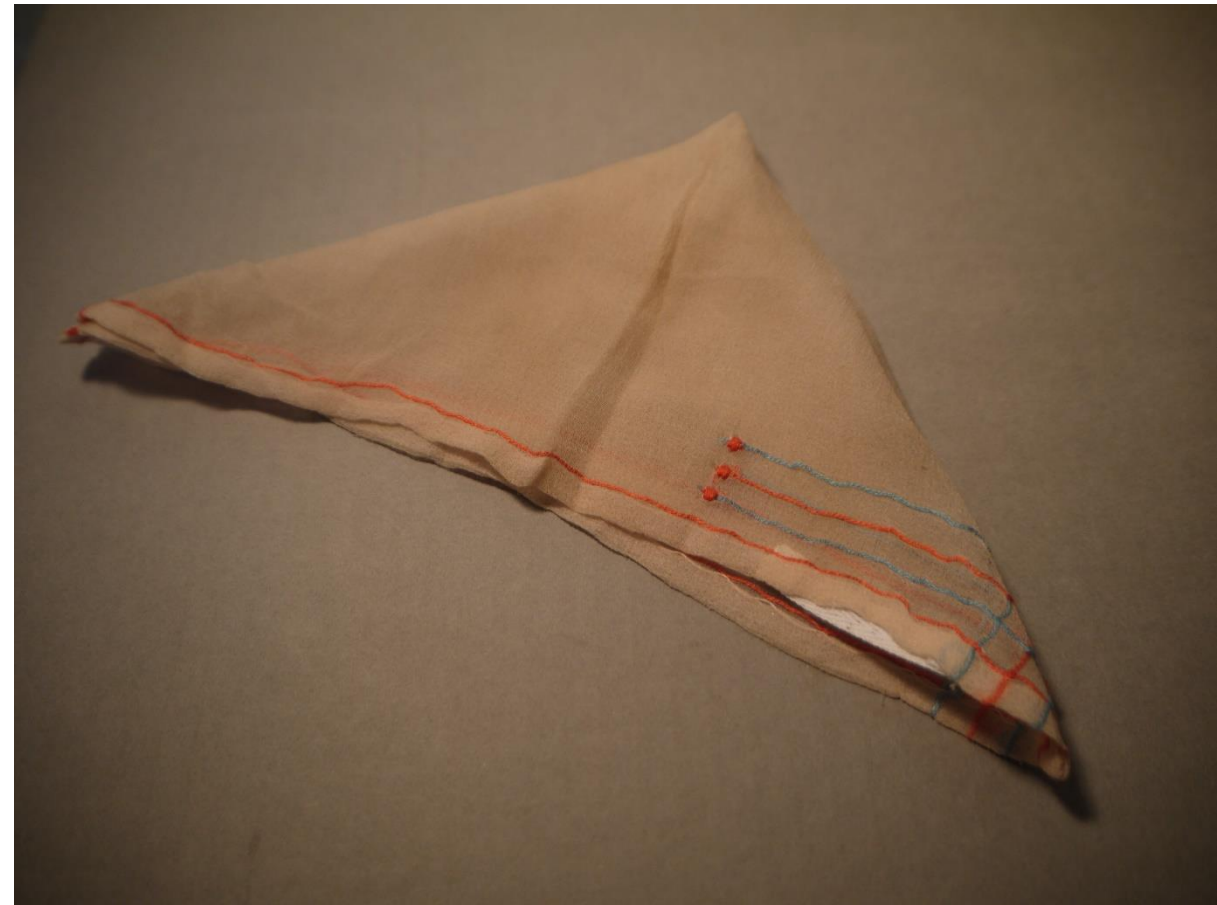


Accession #: Y01-712-01

Medium: Textiles

Description: Embroidered handkerchief

Recommendation: Duplicate

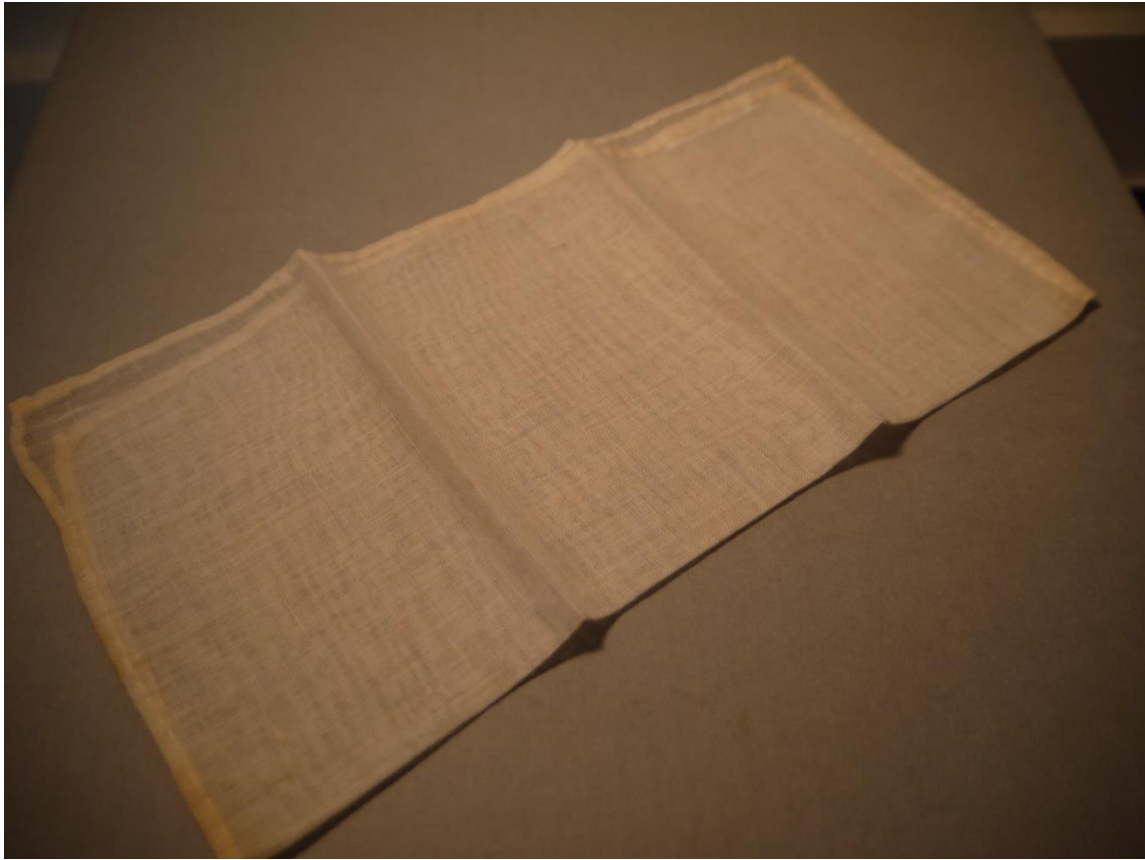


Accession #: Y01-690-33

Medium: Textiles

Description: red and blue embroidered handkerchief

Recommendation: Duplicate



Accession #: Y01-336-1-B

Medium: Textiles

Description: White handkerchief

Recommendation: Duplicate





Accession #: Y01-336-1-A

Medium: Textiles

Description: rose embroidered handkerchief

Recommendation: duplicate



Accession #: Y01-C227-13

Medium: Textiles

Description: cherry blossom embroidered handkerchief

Recommendation: Duplicate



Accession #: Y01-C147-2

Medium: Textiles

Description: illustrated handkerchief

Recommendation: Out of scope, lacks relevance



Accession #: Y01-509-15

Medium: Textiles

Description: Daisy embroidered handkerchief

Recommendation: Duplicate



Accession #: Y01-509-14

Medium: Textiles

Description: Embroidered handkerchief

Recommendation: Duplicate