

**DRAFT Minutes for Wild Wings County Service Area Advisory Meeting
Wednesday December 4, 6:30 PM
Wild Wings Nest**

The meeting was called to order by Mark Ulrich. Committee members present were Doug Williams, Mark Ullrich and Lachi Richards. Also present was David Block from the CSA Administrative Support Team, and Dottie from the Supervisors office, and David Moreno from the Supervisors office, members of the community.

Introductions: None

PUBLIC COMMENTS: None.

UPDATE FROM THE OFFICE OF SUPERVISOR: None

APPROVAL OF MINUTES: October 16, 2019 approved.

Discussion and Action Items

A. Report out from Golf Sub-Advisory Committee meeting (Ulrich)

Golf course down in Oct, up in November, rate structure, up a little, 20% discount for residents. Pond drained down, budget was positive, moving in right direction.

B. Status of water & wastewater systems (SUSP)- Attachment 1:

Wastewater plant running OK.. Groundwater sampling completed for this month. Replaced turbidity meter, replace battery on backup generator. Sunday, December 1, the inflow was 160,000 gallons, due to rain, sewage plant handled it OK. Showed that repairs made were effective. Monitoring for color issues at end of Canvasback. Flushing from fire hydrants helps reduce the issue. Water meter readings are happening, but there are still issues with automatic reading. Run sludge press during day to reduce odor issues. Discussion of how to deal with complaints, need to communicate. Storm drain issue, need to clean out roots on Pintail. May need to cut out roots in storm drains. SUSP to propose price to HOA.

C. Status of wastewater treatment plant rehabilitation (County)

David – only thing left is maintenance and operations manual to be completed this spring. Lachi – Pintail SCDA upgrades, handout. Will make it easier to remotely manage the systems. Still discussing the future upgrades and costs, have a 5-year window.

D. Source Water Protection Plan Update: Attachment 2- California Rural Water Association

Rachael Kennard, Representative of this organization will help assess the protection of the drinking water. She will highlight several activities that could contaminate the wells. This service is free, funded by USDA, helps rural communities to keep their water supplies safe. Will work with SUSP. Relationships with neighboring farmers. There may be need to do some BMP (best management practice). Possible hazardous spill in area could get to groundwater.

E. Update on Well Water levels. Lachi.

Handout of last year's water levels at Pintail and Canvasback. Pumps were lowered at both wells, drawdown is approximately 70 feet at Pintail, and about the same at Canvasback. Groundwater meetings say that we could do active recharge at Watt pond by ripping the bottom to promote recharge. Run water back into pond from other source, recharge into groundwater. Next meeting Jan 17th.

F. Arsenic treatment (County)

December 17th is start of project, estimate is \$1.5 million total cost, 22 months to complete.

G. Golf course Pond update – See above.

H. Pontichello Enterprises subconsultant – Lachi.

Approved.

I. CSA financial update. (County) Handouts

1. Final from 4th quarter last year, and 2. Next year.

The sewer balance will go from a \$500,000 deficit to being in the green by next year.

Have to pay back the water fund that was borrowed to pay for the sewer update. Have to do an updated engineer's report to see future funding. David will work with accountant and engineers report to come up with a way to pay for the future sewer improvements.

J. Call for future agenda items: same as above.

Motion to approve

Adjournment

Next Meeting: February 5, 2020, 6:30 p.m.

Future meetings: 4/1, 6/10, 8/5, 10/7, 12/2

Minutes Submitted by Doug Williams

Attachment 1: SUSP report December 2019

Wild Wings Monthly Operations Report



December 2019 – Subsequent pages of this report reflect the prior month's data.

Wastewater

Current Projects:

The wastewater plant is running well. The wastewater plant is running at full operations.

- Wastewater reports are up to date.
- 24 hr. pond level sensor platform installed.
- Source power monitoring data downloaded for WWTP.
- 4th Quarter Ground Monitoring Wells sampling completed.
- Nelson and Sons made program adjustments for Primary EQ basin.
- Replaced Tertiary Turbidity Pump.
- Repaired Tertiary Turbidity meter.
- Replaced battery on generator.

Upcoming Projects:

- Blower D failed need to be replaced.
- Install cover for irrigation system controls.
- 24 hr. pond level sensor needs calibrated by Nelson and Sons.

Water

Current Projects:

Daily operations are going fine.

- Continue to monitor color issues in Distribution System.
- Pintail generator touch pad panel has been replaced.
- Source power monitoring equipment installed at Canvas Back well site.
- Mission Controls expansion board installed to add high, and low level alarms for reservoir; well pump fail.
- Repaired Backflow valve assembly at Lake C4.

Upcoming Projects:

- Work on billing program with Itron and county.
- Continue with hydrant flushing program.
- Continue with valve exercising.

Wild Wings C.S.A. Water Monthly Facilities Report

Report Month November 2019

| Well Production | |
|---------------------------|---------|
| Canvas Well | |
| Well Water Production | 2.73 MG |
| Drinking Water Production | 0 |
| Pintail Well | |
| Well Water | 6.58 MG |
| Drinking Water | 6.58 MG |

| Distribution Pressure Ranges 60-80 PSI | |
|--|----|
| High | 68 |
| Low | 54 |

| Chlorine Residual Ranges | |
|--------------------------|-----------|
| High | 2 mg/l |
| Low | 1.51 mg/l |

| Pumping and Water Levels | |
|--------------------------|------------|
| Canvas Well | |
| Total Water Pumped | 2.73 MG |
| Static Water Level | 148.23 Ft. |
| Bowl Clearance | |
| Pintail Well | |
| Total Water Pumped | 6.58 MG |
| Static Water Level | 156.20 Ft. |
| Bowl Clearance | |

| Water Balance <i>(Months when meters are read)</i> | | | |
|--|--------------------|------------|------------|
| Source | Produce | Used/Sold | Difference |
| Pintail Hydrant flushing | 6.58 MG .168 MG | Metered | |
| Canvas Back | 2.73 MG | Irrigation | |

Equipment Failures and System Repairs

None.

Permit Violations

None.

Sampling Results

| Constituent | Sampling Schedule | Maximum Contaminant Level | Result |
|-----------------------|-------------------|---------------------------|---------------|
| Arsenic | Quarterly | 10ug/L or | 6.7 – Pintail |
| | Oct 22 | 10ppb | 11 – Canvas |
| Total Coliform (BacT) | Monthly | None Detected | Absent |

Anticipated Issues with Facilities

None.

Customer Complaints

None.

Wild Wings C.S.A. Monthly Wastewater Facilities Report

Report Month November 2019

| Wastewater Treatment Plant | |
|----------------------------|----------|
| Influent Flow Total | 1.61 MG |
| Effluent Flow Total | 1.76 MG |
| Average | .053 MGD |
| Chlorine Residuals | |
| 20 mg/l | |

| Tertiary Effluent | | |
|------------------------|----------|------------------------|
| Operational Parameters | | |
| BOD | 100% | <i>Percent Removal</i> |
| TSS | 100% | <i>Percent Removal</i> |
| Turbidity Ranges | | |
| High | 1.7 NTU | |
| Low | .209 NTU | |

Equipment Failures and System Repairs

Tertiary Turbidity pump and meter repaired and replaced.
Replaced battery on backup power generator.

Permit Violations

None.

Sampling Results

| | |
|--|---------|
| BOD Biochemical Oxygen Demand | ND |
| TSS Total Suspended Solids | ND |
| TDS Total Dissolved Solids | 860 |
| TN Total Nitrogen | 33 mg/l |

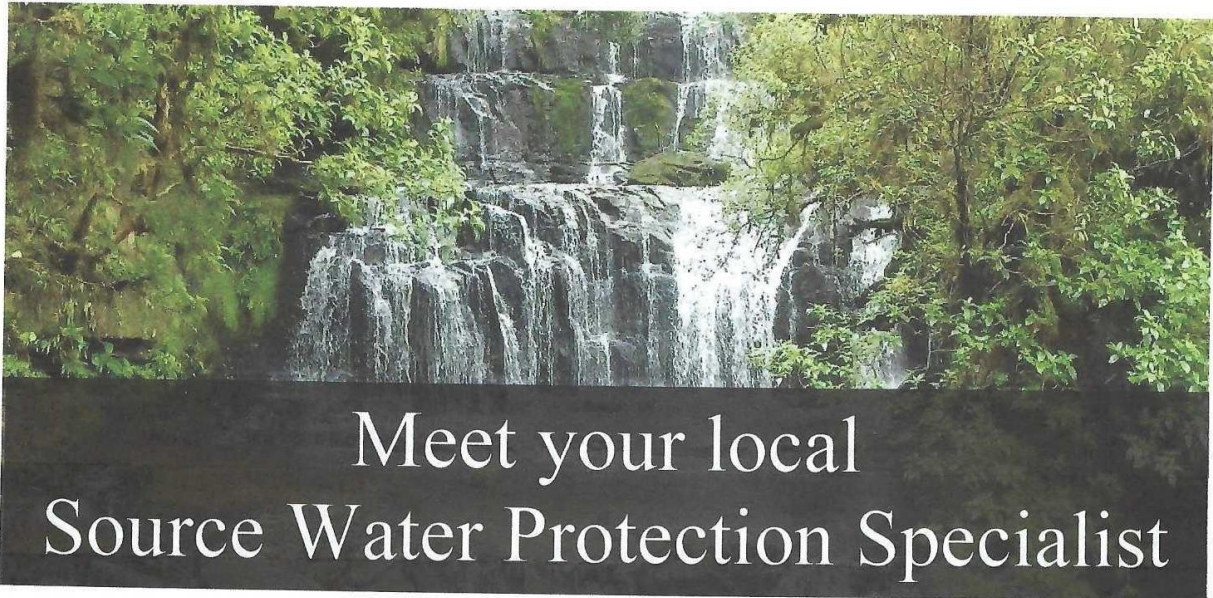
Anticipated Issues with Facilities

None.

Customer Complaints

None.

Attachment 2: California Rural Water Association



Meet your local Source Water Protection Specialist

ADDRESSING CRITICAL NEEDS FOR RURAL
WATER UTILITIES AND SECURING THE PATH
FOR A SUSTAINABLE FUTURE



Rachel Kennard started with CRWA in August 2019. Her background as a Senior Water Quality & Environmental Compliance Specialist emphasizes drinking water quality and environmental compliance within the investor-owned utility and regulatory sectors.

She is currently pursuing a Master of Science in Hydrological Sciences with a specialization in Water Policy and Management at UC Davis.

"Provide training, technical assistance, resources and information to assist water and wastewater utilities in achieving high standards of service." – CRWA Mission Statement

Make an appointment with your CRWA Source Water Protection Specialist to talk about all of these free services!

- Source Water Protection Plans
- Drinking Water Quality (WQ)
- WQ Monitoring Schedules
- WQ Data Organization/Database Management
- Hazardous Waste/Materials Management
- Hazardous Materials Business Plans
- Air Resources Board Compliance
- Emergency Notification Plans
- NPDES Compliance
- Inspection Preparedness



California
Rural Water Association

Rachel Kennard

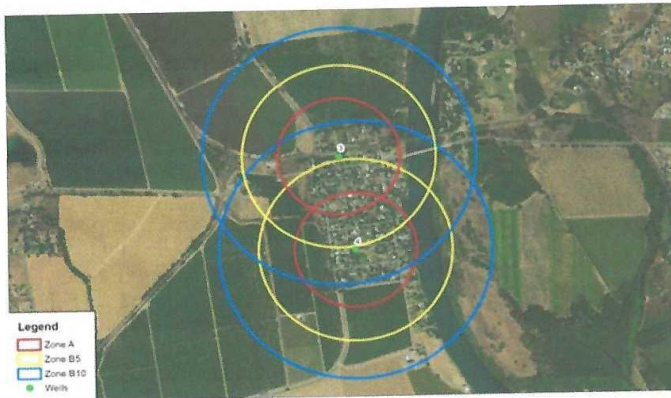
rkennard@calruralwater.org

C: (916) 335-1727



What is a Source Water Protection Plan (SWPP)?

A VOLUNTARY DOCUMENT THAT OUTLINES POTENTIALLY CONTAMINATING ACTIVITIES (PCA'S) WITHIN SOURCE WATER PROTECTION AREAS AND PROVIDES SPECIFIC RECOMMENDATIONS FOR MANAGING THREATS TO WATER QUALITY.



SWPP's also include a contingency plan that identifies actions & tips for external press communication in the event of a water quality/outage related emergency.

BENEFITS OF A SWPP

- Treatment Cost Minimization
- Multi-barrier approach to water quality (WQ)
- Redundancy/Resilience
- Consumer Confidence
- Public Participation
- Community building
- Responsible watershed management
- It's FREE!

Make an appointment with your CRWA Source Water Protection Specialist to start your free SWPP!



California
Rural Water Association

Rachel Kennard

rkennard@calruralwater.org

C: (916) 335-1727