

COUNTY OF YOLO

Health and Human Services Agency

Karen Larsen, LMFT
Director

137 N. Cottonwood Street • Woodland, CA 95695
(530) 666-8940 • www.yolocounty.org

Local Mental Health Board

Regular Meeting: Monday, June 29, 2020, 6:00 PM–8:00 PM

Please join by ZOOM in link below:

<https://us02web.zoom.us/j/83810880723?pwd=T0oySVNZUEJKNEVYRVV3Yy84U1Z2QT09>

Meeting ID: 838 1088 0723

Password: 4N0kxj

Dial: +1 669 900 6833

All items on this agenda may be considered for action.

CALL TO ORDER ----- 6:00 PM – 6:10 PM

1. Public Comment
2. Approval of Agenda
3. Approval of minutes from [May 18th, 2020](#)
4. Member Announcements

TIME SET AGENDA ----- 6:10 PM – 7:10 PM

5. MHSA Plan Presentation-Brian Vaughn

CONSENT AGENDA ----- 7:10 PM – 7:30 PM

6. [Mental Health Director's Report](#) – Karen Larsen
 - a. COVID 19
 - b. Racial Equity
 - c. Budget
 - d. Pine Tree Gardens
 - e. Criminal Justice Board Workshop
 - f. Child Welfare Board Presentation
 - g. Homeless Projects
 - h. Data Driven Recovery Project
 - i. County Crisis Services Continuum Updates
 - j. Mental Health Student Services Act (MHSSA) Grant Application

Nicki King
Chair

Vacant
Vice-Chair

Robert Schelen
Secretary

District 1
(Oscar Villegas)

Aleecia Gutierrez
Maria Simas
Rachel Warren

District 2
(Don Saylor)

Serena Durand
Nicki King
Antonia Tsobanoudis

District 3
(Gary Sandy)

Richard Bellows
John Archuleta
Nick Birtcil

District 4
(Jim Provenza)

Carol Christensen
Robert Schelen
Jonathan Raven

District 5
(Duane Chamberlain)

Brad Anderson
Xiaolong Li

Board of
Supervisors
Liaison

Don Saylor

Alternate
Jim Provenza

If requested, this agenda can be made available in appropriate alternative formats to persons with a disability, as required by Section 202 of the American with Disabilities Act of 1990 and the Federal Rules and regulations adopted implementation thereof. Persons seeking an alternative format should contact the Local Mental Health Board Staff Support Liaison at the Yolo County Health and Human Services Agency, LMHB@yolocounty.org or 137 N. Cottonwood Street, Woodland, CA 95695 or 530-666-8516. In addition, a person with a disability who requires a modification or accommodation, including auxiliary aids of services, in order to participate in a public meeting should contact the Staff Support Liaison as soon as possible and preferably at least twenty-four hours prior

REGULAR AGENDA ----- 7:30 PM – 7:50 PM

- 7. Board of Supervisors Report – Supervisor Don Saylor
- 8. Criminal Justice Update: MHC- Jonathan Raven
- 9. Chair Report – Nicki King
 - a. Nominating Committee Report
 - i. Elections
 - b. Review the proposed Pine Tree Gardens Sustainability Plan
 - c. Outreach to African American Community

PLANNING AND ADJOURNMENT ----- 7:50 PM – 8:00 PM

- 10. Future Meeting Planning and Adjournment-Nicki King
 - a. Special Meeting July 20th to Approve MHSA Plan

[Next Meeting Date and Location](#)

Next Meeting: August 31, 2020-ZOOM

I certify that the foregoing was posted on the bulletin board at 625 Court Street, Woodland CA 95695 on or before Friday, June 26, 2020. Christina Grandison Local Mental Health Board Administrative Support Liaison Yolo County Health and Human Services

Attachment 3.
Meeting Minutes
May 18th, 2020



COUNTY OF YOLO

Health and Human Services Agency

Karen Larsen, LMFT
Director

137 N. Cottonwood Street • Woodland, CA 95695
(530) 666-8940 • www.yolocounty.org

Local Mental Health Board Meeting Minutes

Monday, May 18, 2020

Online/Call-in ZOOM

- Members Present:** John Archuleta, Brad Anderson, Maria Simas, Jonathan Raven, Carol Christensen, Rachel Warren, Xiolong Li, Aleecia Gutierrez, Nicki King, Richard Bellows, Serena Durand, Robert Schelen (Bob), Antonia Tsuboudis, Don Saylor
- Members Absent:** Supervisor Jim Provenza, Nick Burtcil
- Staff Present:** Karen Larsen, Mental Health Director, HHSA Director
Leigh Harrington, HHSA Medical Director, Mila Green, Deputy Branch Director/Deputy Mental Health Director
- Guests:** Kathleen Williams-Fossdal, Elena Ledesma, Linda Wight, Sara Simmons, Leslie Carol, Nancy Temple, Maggie Fry, Petrea Marchand, Mavon Garrity, Marilyn Moyal, Patrick Odland

CALL TO ORDER

- 1. Welcome and Introductions:** The May 18th, 2020 meeting of the Local Mental Health Board was called to order at 6:13PM On-line. Introductions were made.
- 2. Public Comment:**
 - Patrick Odland inquired about applications for serving on the Board and Nicki directed him to go to Yolo County Website
 - Kathleen Williams states, if we purchase Pine Tree Gardens for \$800,000 there would be \$200,000 left, could we rent with the remainder with a plan for purchase to buy?
 - Linda White expresses concerns for proposal of sale primary language of process. Community input has always been. Feels shortchanged because timeline didn't allow committee enough time to react and evaluate the proposal. I feel there needs to be some clarifying language in the memorandum of understanding. Stand firm to make sure needs of residents come first. They need our protection. Advocacy for stable housing. However, maintaining PTG as it is currently is a key component.
 - Marilyn Moyal-read her statement to BOS if the homes do remain as they are the current will need more costly care.
- 3. Approval of Agenda:** with the following changes; add Nomination Committee Report and Vote Committee will reach out before next meeting to inform. The nominating committee had a Skype meeting today at 5pm. Carol moved to approve and Maria second.

4. Approval Minutes: Richard; Maria 2nd with the following corrections; note that Anaya McCann made a public comment or note the comment was unavailable if no recording. Rephrase to say nominating committee and remove the additional items that weren't covered as topics on Local Mental Health Directors Report.

5. Member Announcements:

- Richard and his wife have now made over 600 masks for donation.
- John states he got an email from someone that is suffering from PTSD who claimed that the masks were causing them difficulty, Nicki states we must follow the guidelines. John wants something to be put out about a public statement from NAMI for no public shaming, Nicki states she represents health council they can be sent directly to her.

6. Correspondence: None

7. Time Set Agenda: None

8. Mental Health Director's Report by Karen Larsen, Mental Health Director, HHSA

Executive Commission to Address Homelessness- group of elected officials from each of the cities and HPAC. The group used to be the 10-year Plan to address homelessness, they are now working together to steer the ship. The SB funds that come to the county have to do with property sales, can we pull these funds to continue Project Room Key longer than we think the state is going to fund it. Antonia wants to know if the budget is included in the Housing Stability document in the packet included with source documents

MHSA 3-year Plan- the consultant we brought in is finalizing it for posting. Hopefully you will see the report and potential vote at next meeting. Nicki will there be any kind of delay since COVID? Karen states there are advocates pushing for extensions, but we have no way of knowing if that will be successful. Nothing good unfortunately. We shared based on governors may revised. We will have our first receipts for realign dollars so we will know what's going to hit. We will be making deep cuts to several Prop Programs. The last economic downturn we laid off 40% of our staff but we are in an even worse place now. We may be able to shift realignment now that we have integrated. The last time we had a major downturn, maybe it won't be to our advantage to delay the plan. Karen states our intentions not to delay the plan.

Pine Tree Gardens/ARF-the MOU that goes to BOS tomorrow is between transfer 1 million to new hope for purchase and any needed repairs to East house. Going in with a short turnaround money is set to revert to state on June 30th. We have tried to spend the money for 6 years now on other projects. When we came to this point where we going to lose the money. Our plans are not to make changes to way we provide services, we have no intention of anything more tomorrow than getting the money out the door and improve programming. Antonia says Save Pine Tree Gardens and HHSA have had a working relationship and their requests have been made clear, we all want to keep Pine Tree Gardens as a place where people can go to live with serious mental illness, intent is for it to continue that care even as it turns over. We have two paths one where we are taking care of the physical location, separate from that there is the care of the consumers (operators' side of house) tomorrow is an agreement that county will transfer funds. Glad there is money. Brad was asked to speak tomorrow for public comment at the BOS meeting, how he understands it that he would like to express from his experience that the program remains the same and that permanent residency will still exist. Wants to know if the current operators will lose their jobs. Karen states, we issued

an RFP and awarded the contract, if they take over the operation of this home or the other one, they have offered to extend a wage to the current operators. Nicki points out that if North Valley BH does end up being the operator of record, they would have to obtain a license. Karen states facilities are already licensed. Karen not sure about the question but it's worth looking into but we aren't there yet in the process. We are just trying to get the money out the door. Antonia would like to know if there will be rent charged. How are they planning to operate? Will it function just as it is now, pay operator and then pay lease back to New Hope. Karen states right now operators pay nothing but that's not sustainable.

- **State Budget Projections-** Nicki says she saw may revise, and it is heading in draconian direction. Karen says it's going to get worse before it gets better. In terms of realignment. Its already bad we will spend all the reserves we have for realignment. Our savings will be gone by July 1st. We will be making significant additional cuts.

REGULAR AGENDA

9. Board of Supervisors Report given by Don Saylor, Yolo County BOS-District 2

Tomorrow we will make a very significant step moving forward to support PTG in Davis we are in this all together. This has been around a long time we are trying to take one step at a time, and this is a very defined step. It's been a struggle to get to this point. The connection to state budget is a significant one. There are some creative people who try and scrape together and identify everything they can. We have had calls for fund balance. It's unlikely we will escape unscathed. This million will explore in June, won't go unnoticed as state will be looking for every penny. 835 low income folks, we just joined 5 years ago. That program has done so good there are few uninsured. The cost is going to pay for homeless in motels, we know the governors going to look at reserves for county medical services program. If that happens, we won't be able to serve those folks if it hits our funding. Its billions of dollars of a budget hole. The county is in the same situation. With 8 million in revenue reduction and 8 million in revenue reduction in property taxes, and sales taxes coupled with added expenses which are necessary to give stop gap to those in need. We will do hiring freezes, not pay some expenses,

Tomorrow we will also be proclaimed Mental Health Awareness Month and it sad we are unable to hold it in the special way we normally do. Respond in positive way and keep serving the people in the way we usually do.

184 confirmed COVID cases and 22 neighbors have succumbed to this virus. We have done well with our stay at home orders. A whole lot of people have had to deny themselves including those who had to deny themselves to make a living. We believe the governor has adjusted to allow us to move forward to stage 2. It will allow dine in services but not immediately. We have also opened a few other categories. Large gatherings are still high-risk situations and we are still looking at those coming in stage 3 or 4 in the next 3 to 4 months. Areas such as skilled nursing facilities, being too close together at work, those incarcerated, places of worship, or family gatherings are where infections are spreading most rapidly. As of today, we have had no cases in a jail or detention facility setting for inmates, vendors, or staff. This is attributed to the safe practices of the people who are operating those places. Population kept very low with the ability to house 450 but instead kept only 175. The were able to keep single room occupancy in county jail with an isolation area for regular population and those with

concern for exposure to virus. Pressure to open the things we love to do are mounting. Thank you for your service.

Nicki mentions that a good part of the very wonderful outcome in term of low numbers has to do with work of our health officer Ron chapman. The people on county team have been incredible as well as the volunteers like the bellows or delivering food. Asking people if they need anything, checking in on each other. It's the yolo way. Brad-everyone's been a great job.

10. Criminal Justice Report by Jonathan Raven, Chief Deputy District Attorney

I am glad there are a lot of member from public, you will find this report to be happy, sad, challenging but uplifting. 1st about a week ago one of our young MH court participants was arrested for assault a serious crime which was frustrating because he was doing well for 15 months. The family contacted me family were happy with the way the officer handled the case. They were caring and compassionate. We are doing well in this county with our officer getting evolved CIT training. The Department of State Hospitals is not accepting or sending out. They are transferring and transporting, we had 5 come into our jail now. Thinking about what we want to do to help these individuals. Assessments on hold for a while during COVID that was a challenge because we weren't getting the referrals. Thanks Karen, for rebooting assessments in facilities to find out who need to get help. Something really sad and hit me hard; Maria Guevarra lives in Solano County was influential in helping homeless, with a strong relationship with DA. She committed a serious crime (abuse resulting in the victim breaking ribs). Solano county asked us to help as it was a conflict of interest for them, so the case came to me and my team recognized some mental health issues. I took it because we have a lot of experience. I had only wish we had the programs in Solano County like we had here. I knew what we would do if they were here. I didn't agree with judge's decision, and shortly after she completely disengaged from services and was out in the wind. She was set to come back to court to see how we can help her. Sadly, the criminal justice is the place where we can help people with mental health. She was scheduled to be in court in a few weeks and I got an email on Friday from county counsel that Maria was hit by a train and died. It was really very sad for them. I am happy to answer any questions. We have this grant which will allow us to double the number of participants, and soon we will get funding and can hire new case workers, we will be hiring and expanding, currently its only Jasmine Gonzales. We are on the cutting edge in Yolo County. We have a long way to go in what we can do. We have these group calls with the Center for Excellence out of New York, regarding COVID with prosecutors. I was asked to talk to those prosecutors about what we have been able to do with MH Court. Couldn't believe that few were doing it by Zoom. We are trailblazers in yolo county and that's very exciting. Uplifting event last Thursday participant in Steven in addiction intervention report had 20-year career as police officer in Hawaii, he surrendered himself to the program we supported him in court, was due to graduate but kept delaying it. Last Thursday we did a zoom graduation. We were able to have people attend that wouldn't normally be able to attend. We had cake and pizza deliver. Some of you participant haven't done well but this one did. Nicki, I want to commend you in MH and drug court its really saving peoples life. You will be someone I commend tomorrow at the board. Marilyn-would like to say that if the family of the woman who was hit by a train would like to contact me, that's how my son died. I am offering that support. Thank you, she doesn't have a lot of family she has a lot of friends. As I was preparing to talk, I was thing about you Patrea, Noah and your family. It's helpful to be there to support the friend as well.

9. Chair Report

- a. Vitals App: information item only-re-write was nicely done. There wasn't pressure to get it out. The rewording allowed an emphasis on the boards concerns.

10. Future Meeting Planning and Adjournment

Planning future meeting: Put nomination/election on next agenda. Updated roster sent. Need update on our webpage to remove the lovely letter from James, we want to let them know that we do have a different chair.

Next meeting will be on June 29th by ZOOM

Meeting Adjourned at 7:55pm

Attachment 5.
Mental Health Directors Report

Yolo County Health & Human Services Agency

Mental Health Director's Report

June 29, 2020

- a. COVID 19 – Yolo County, like many counties throughout California are seeing an increase in cases over the last few days. Based on the information received thus far, many of the new positives are the result of individuals not following face covering guidance or social distancing. Some are from specific communities throughout Yolo County so the DOC and EOC staff are working on specific guidance for those communities. There will be additional guidance regarding social gatherings released to the public as well to reinforce the importance of adhering to public health guidance as we look to minimize exposure and new cases.
The Board received a presentation on June 23rd from Brian Vaughn, Public Health Director, that highlighted local and regional data, outreach and education efforts around infection transmission methods, and updates regarding testing, contact tracing, skilled nursing facilities, and long-term care facilities (see attached presentation).
- b. Racial Equity- The County is committed to addressing racial equity in our systems as we acknowledge that these disparities lead to negative social, physical and behavioral health outcomes for our communities of color. In our MHSA 3-year plan we are specifically highlighting this work and dedicating fund toward intervening in racial disparities. Our County and Agency Strategic Plans have focus areas around health equity and our Board supports addressing systemic racism. I shared an email with our staff (see attached letter) and I am working with our County Diversity and Inclusion Workgroup to do a countywide survey and implement subsequent focus groups or talking circles. Finally, we will be addressing racial disparities within our Child Welfare and Criminal Justice systems via Board presentations.
- c. Budget-The budget for 2020/2021 continues to be somewhat of a placeholder budget, both locally and at the State level. Because so much of our revenue is tied back to taxes and because taxes were deferred until July, we won't know the full impacts until August. We are working through scenarios evaluating mandated versus discretionary programming and planning the best we can for what's to come. Our hope is to avoid layoffs and dramatic cuts such as those that occurred in 08/09.
- d. Pine Tree Gardens – HHSA, Supervisors Provenza and Saylor, and the Save Pine Tree Gardens Committee have continued discussions regarding sustainability for the two Davis Board & Care Homes. One home is being purchased this month by New Hope Corporation, using dedicated MHSA Capital Facilities funds as allocated in the current 3-year MHSA plan. This purchase will assure the home remains in service as a Board and Care for several decades. Next steps include developing a contract for ongoing services in the New Hope-owned home, as well as considerations for purchase of West House by the same service provider, North Valley Behavioral Health.

- e. Criminal Justice Board Workshop – On July 7th, the Board will be holding a Criminal Justice Workshop to receive an update on Yolo County’s current Sequential Intercept Map (SIM). The SIM breaks the criminal justice system into intercepts to show how a behavioral health client may move through the system, and what supports, and programming are available throughout the system. In October, the Community Corrections Partnership (CCP) held a special meeting which included public participation and the goal was to define the current system and identify any gaps or needs missing. The presentation on July 7th will be done by members of HHSa and criminal justice partners with the purpose of highlighting those gaps and needs identified, as well as, the amazing programs that Yolo County has in place at various points of the criminal justice system. With the current economic environment of the State and Nation, and the current focus on the criminal justice system given recent events, this will be a timely workshop!

- f. Child Welfare Board Presentation (See attached)

- g. Homeless Projects – HHSa and the County Administrator’s Office have been working with the City of Woodland on proposed development efforts at Road 102 & Beamer. In addition to receiving No Place Like Home funds to provide 29 housing units for individuals with severe mental illness requiring Full Service Partnership level of support, the location will also provide 31 additional housing units for low income individuals. The County’s only year-round emergency homeless shelter, 4th & Hope, will also relocate to the parcel. The shelter move is tentatively projected for October, 2020. HHSa, City of Woodland and the project developer, Friends of the Mission, are now set to start operations planning for the No Place Like Home units, with expected resident move-in beginning in January – March, 2021. The West Sacramento No Place Like Home units, 41 in an 85-unit development, are projected to open in September, 2021. Planning for those move-ins will start later this summer.

- h. Data Driven Recovery Project – HHSa continues to lead the 5 county DDRP which is aimed at utilizing data to inform decision making across the criminal justice system and ultimately lead to improve outcomes for those with behavioral health needs. While COVID has slowed some of the overall work, the project continues to move forward and in July, HHSa is launching another phase of the trauma work related to the project, in conjunction with the Probation department. This work will consist of conducting Adverse Childhood Experiences (ACEs) screening with adult probationers and those with the highest ACEs scores will also can participate in a cognitive assessment. The intention of this work is to identify confirm the presence of a cognitive impairment, determine the type, and establish a correlation between ACE scores and cognitive impairment which will allow for more targeted therapy recommendations.

HHSa is also working with the DDRP consultant, Kevin O’Connell, to identify other potential data sets that could help better inform our systems, including gathering information from the Homeless Management Information System (HMIS). This will help paint a clearer picture of the systems individuals interact with and the comprehensive supports they need overtime to be successful.

Most recently, there is work being done to identify how to incorporate and align the data and outcomes from several different criminal justice grants that Yolo County departments are implementing. This work will ensure we're not duplicating efforts and that data is being compiled comprehensively and utilized effectively.

- i. County Crisis Services Continuum Updates- As of July 1, 2020, Yolo HHSA will roll out a revised Crisis Response Continuum of Care (in revision, will be available once complete). The flyer details, staff at both local hospitals will handle all crisis/5150 hold assessments for persons that present in their emergency rooms, while the County will navigate any needed acute psychiatric placements as a result of an involuntary hold. County clinicians will provide this 'Crisis Navigation' service during business hours, and our after-hours contracted clinicians will provide the same service during nights, weekends, and holidays. Additionally, Woodland PD and Davis PD (and possibly West Sacramento PD) will have an embedded County clinician that will co-respond with law enforcement officers to community crises during peak hours. HHSA will also have Walk-in clinics open to members of the public during business hours (Monday to Friday) in Woodland (8:00 am to 5:00 pm), Davis (8:30 am to 5:30 pm), and West Sacramento (8:30 am to 5:30 pm), offering walk-in crisis, mental health and SUD screenings & linkage, and medication support services. All Walk-in clinics will accept law enforcement drop offs. For crisis services after-hours nights and weekends, community members are encouraged to contact the County's 24/7 toll-free Mental Health Crisis and Access line, or their local law enforcement agency. Finally, HHSA has added a Crisis engagement service so that any person who comes in contact with a County crisis provider will be engaged afterwards to ensure appropriate service access and linkage to ongoing services.
- j. Mental Health Student Services Act (MHSSA) Grant Application – On June 12th, HHSA submitted a grant application to the Mental Health Services Oversight and Accountability Commission (MHSOAC). This competitive grant would provide four million dollars of funding over four years to promote a partnership between HHSA, the Yolo County Office of Education and the five school districts (Davis, Esparto, West Sacramento, Winters, and Woodland) to ensure that all school-age youth in Yolo County can access mental health services in a safe, comfortable environment that is familiar to them through an improved school-based service delivery system. The proposal calls for development of an integrated service model that aligns with the tiered Positive Behavior Interventions and Support (PBIS) model that is in various stages of implementation within the local school systems. If awarded, the grant will provide seed money to co-locate mental health professionals on school campuses to provide an array of mental health interventions that include prevention (education, outreach, and stigma reduction), early intervention (identification and assessment of youth with needs), crisis management, and connection to resources (referral and navigation). This grant application supports feedback from local stakeholders regarding the need to develop a long-term partnership between HHSA and school systems that braid, blend, and/or leverages diverse funding streams to maximize treatment options in settings that are familiar and comfortable for children and families.



COUNTY OF YOLO

Health and Human Services Agency

Karen Larsen, LMFT
Director

MAILING ADDRESS
137 N. Cottonwood Street • Woodland, CA 95695
(530) 666-8940 • www.yolocounty.org

HHSA All Staff:

I have been writing this email in my head all week. I have had many fits and starts trying to find the right words. It's hard to find the right words when everything feels so wrong. I decided that the right words are less important than some words- to acknowledge this tragic time we are living through. I do not want my absence of words to be misconstrued.

Already our world was struggling under the physical toll of Covid-19, the mental toll of social isolation, and the overwhelming economic impacts. Then we all watched as another black man lost his life at the hands of a police officer. I feel horror, anger and deep sadness at the killing of George Floyd on May 25th in Minneapolis, and at all of those who have died before him in similarly unjust ways.

I am not particularly shocked by the response we have seen across the country from protests to looting. Rather, I see it as a predictable outcome after years of systemic racism resulting in unbelievable disparities for African Americans. This does not mean I condone looting; this means I understand how multigenerational toxic stress and maltreatment can manifest themselves.

We cannot deny that African Americans are disproportionately impacted by poverty and system involvement, starting with child welfare, continuing through juvenile justice, and eventually in the adult criminal justice system. When we discuss health disparities, we cannot deny that our black community members die younger of preventable chronic conditions at a higher rate than their counterparts of other ethnicities.

I know that I am surrounded every day in my work by people who understand these impacts. I know each of you see these disparities and do your best to make it right for the people you are serving. But as public servants, we must do more, especially those of us who have privilege such that we don't have to personally experience these disparities. Here are some things to consider:

Be mindful of what others may be experiencing.

- Racism and discrimination have detrimental impacts on mental health and can create toxic stress and trauma.

Increase social connectivity and encourage supportive environments.

- Social support may help to reduce the stress load. HHSA strives to be a trauma informed agency and wants to be here for you. We are working to develop more tools and trainings to improve our ability to conduct business in a more trauma informed way.

Expand your knowledge.

- Do your part to educate yourself and better understand racial divides and views that may differ from your own.

Davis

600 A Street
Davis, CA 95616
Mental Health (530) 757-5530

West Sacramento

500 Jefferson Boulevard
West Sacramento, CA 95605
Service Center (916) 375-6200
Mental Health (916) 375-6350
Public Health (916) 375-6380

Winters

111 East Grant Avenue
Winters, CA 95694
Service Center (530) 406-4444

Woodland

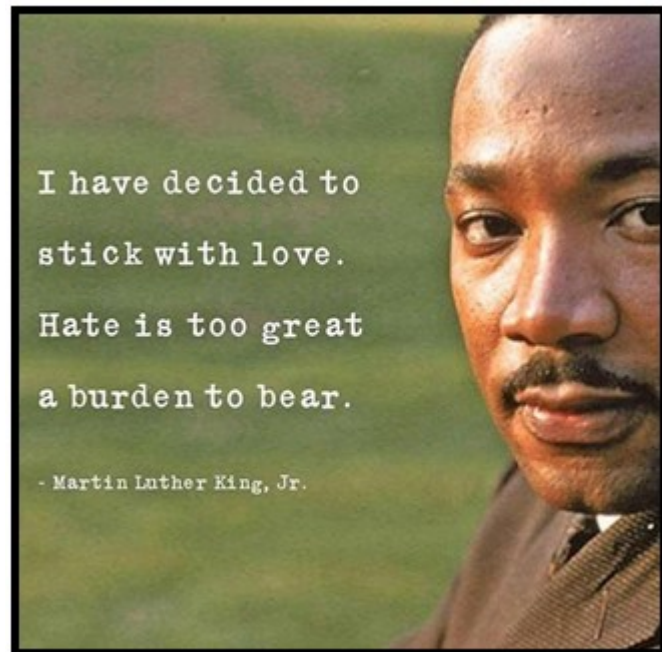
25 & 137 N. Cottonwood Street
Woodland, CA 95695
Service Center (530) 661-2750
Mental Health (530) 666-8630
Public Health (530) 666-8645

I am committed as your Director, as the person responsible for improving the safety, health, and economic sustainability of the residents of our community, to insist on equity and compassion, and advocacy where needed as we begin to move through this next part of our journey together.

We have made a commitment as an Agency to be trauma informed. There hasn't been a year in my lifetime with more trauma for such a large percentage of our population than 2020. I want each of you to know that it is completely normal and altogether acceptable to be sad, angry and lost today. My hope is that we can support one another and our community as we begin to heal. As our community engages in these important social issues, I want to encourage you to do so with patience, humility, curiosity, empathy, and self-awareness. As our Chair Sandy reminded us at Tuesdays Board of Supervisors meeting, "Peace must be practiced."

In Partnership,

Karen Larsen



YOLO COUNTY HEALTH AND HUMAN SERVICES

Child Welfare Services

County Self-Assessment Findings

Karleen Jakowski, LMFT



2016 Child Welfare Action Plan

FOCUS AREAS

CHILD SAFETY

PARTNERSHIPS

VISITATION

LEGAL SYSTEM

POLICIES, PROCEDURES AND TRAINING

TIMELY PERMANENCY

SERVICE DELIVERY

AGENCY STAFF AND LEADERSHIP



2020 County Self-Assessment

COLLABORATION WITH KEY STAKEHOLDERS

Parents, youth in care, public agency personnel, resource parents, community based organization staff, and relatives

OUTCOMES DATA MEASURES AND SYSTEMIC FACTORS

Analysis of outcome data measures, review of systemic and community factors, examine strengths and needs, review of systemic and procedural practices and available resources

PEER REVIEW

In depth examination of case specific services



POPULATIONS AT GREATEST RISK

Poverty, intimate partner violence, substance use and untreated mental health conditions

COUNTY STRENGTHS

Safety assessments, internal infrastructure, enhanced quality improvement and accountability

AREAS NEEDING IMPROVEMENT

Placement capacity, ethnic and racial disparity, teaming, collaboration, and staffing

SERVICE ARRAY GAPS AND NEEDS

Prevention and early intervention services, access, high needs populations and culturally relevant services

OUTCOME DATA MEASURES

Increases in allegations, substantiations, entries to care and racial disparity; improved permanency outcomes and timely response

SUMMARY OF SIP PROGRESS

Significant and foundational changes to CWS; impact of attrition; value of strong CQI system

Populations at Greatest Risk of Maltreatment

POVERTY AND IMPACTS OF POVERTY

Poverty
Housing
Homelessness
Childcare

INTIMATE PARTNER VIOLENCE

Law Enforcement Calls for Assistance Related to Domestic Violence

ACTIVE SUBSTANCE ABUSE

Maternal Substance Use
Alcohol/Drug Related ER Visits
Drug Induced Deaths

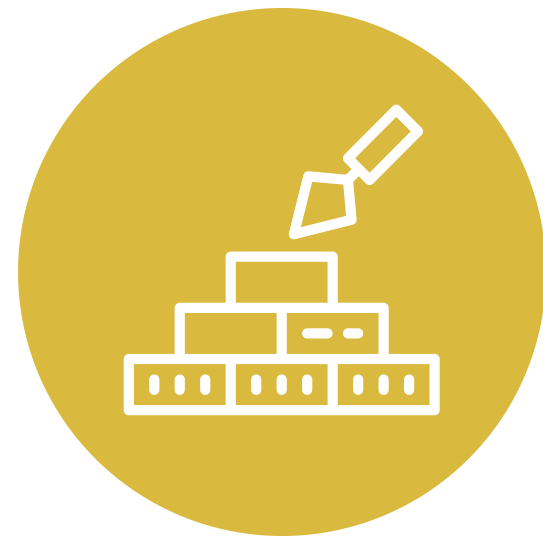
UNTREATED MENTAL HEALTH CONDITIONS

Hospitalizations
14+ Days of Poor Mental Health Per Month

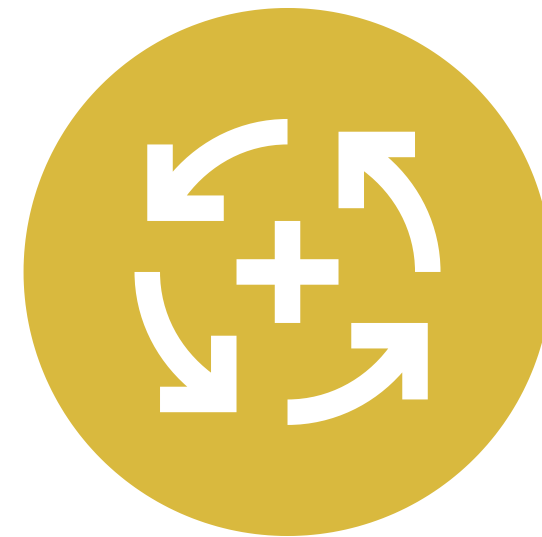
County Strengths



Safety
Assessments



Internal
Infrastructure



Continuous Quality
Improvement



Accountability
and Support

Areas Needing Improvement

RACIAL AND ETHNIC DISPARITY

Substantiation Rates
First Entries
Over-representation in
Foster Care

LOCAL PLACEMENT CAPACITY

Resource Family Homes
Recruitment, Retention
and Support
Children with Complex
Needs

TEAMING AND COLLABORATION

Father Engagement
Resource Families' Role
Family and Youth Voice
Family Finding

STAFFING, RECRUITMENT AND RETENTION

Impact of Attrition
Technology Needs
Training
Safety Concerns for
Frontline Workers

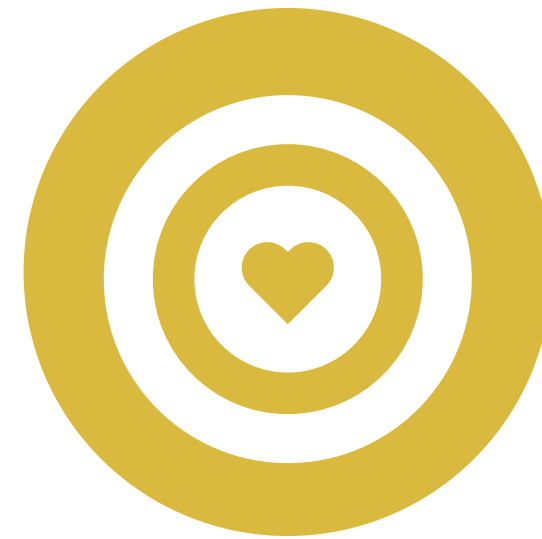
Service Array Gaps and Needs



Prevention and
Early Intervention
Services



Improved
Access to
Services



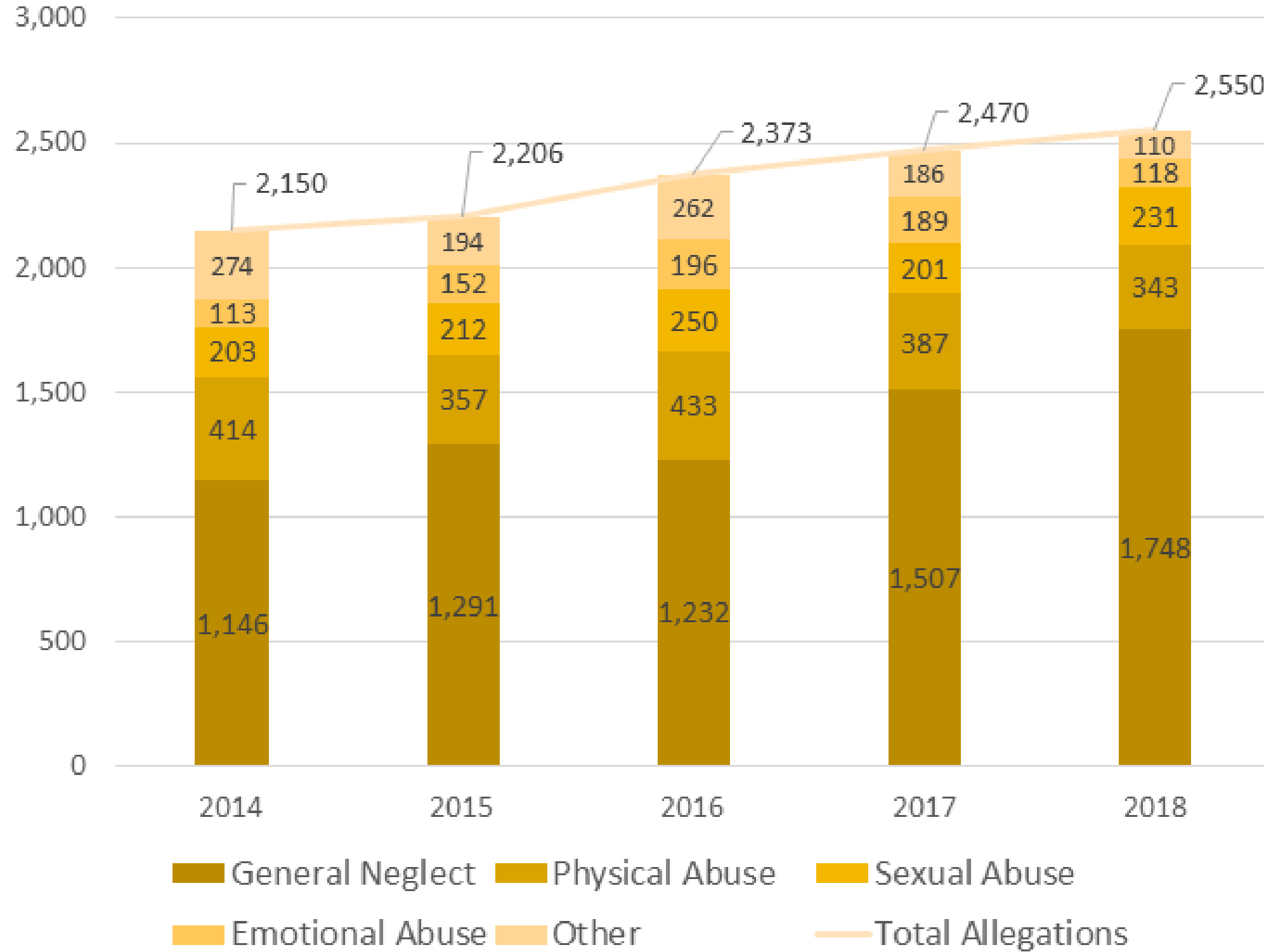
Targeted Services
for High Needs
Populations



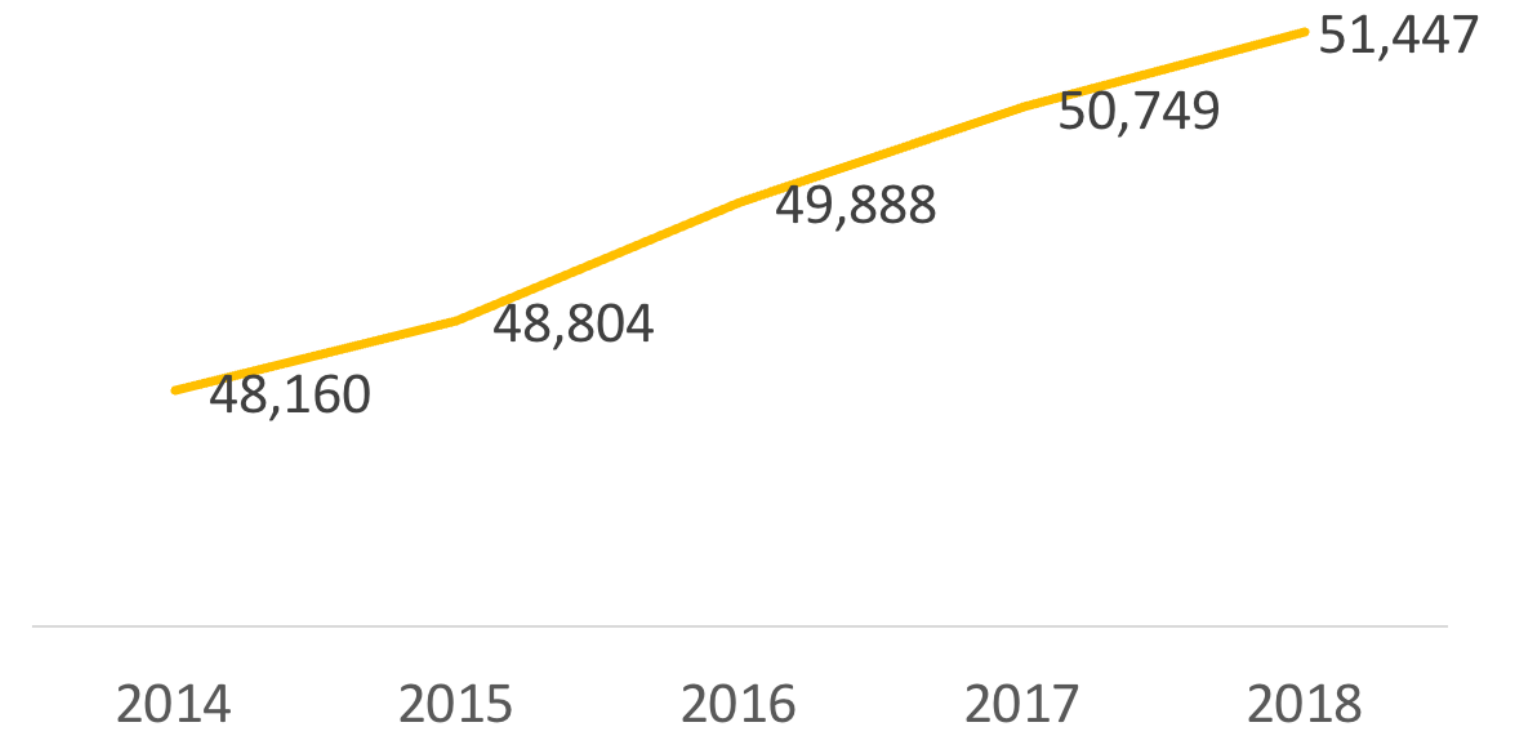
Availability of
Culturally Relevant
Services

Child Welfare Population

Total Allegations & Allegations by Type

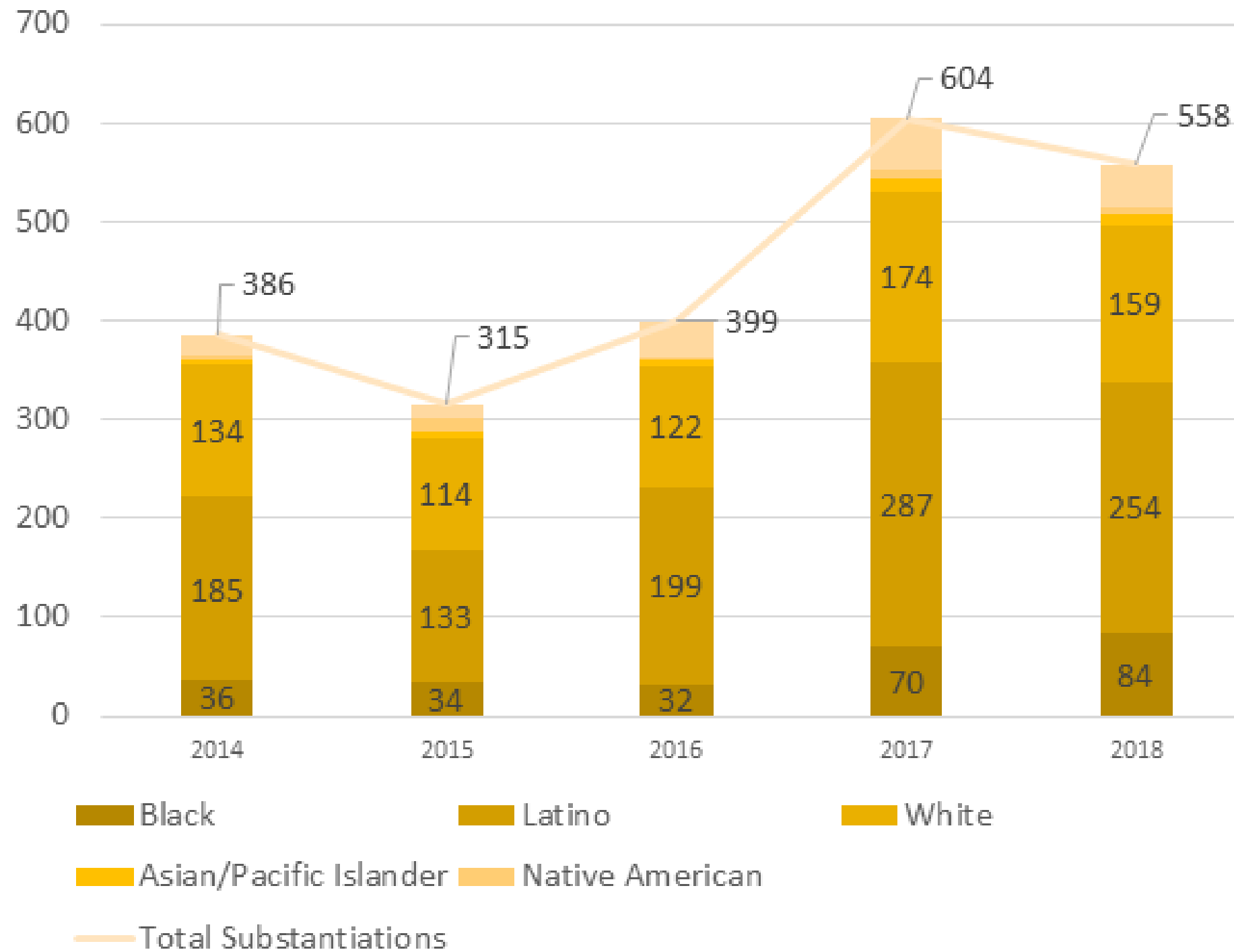


Yolo County Child Population



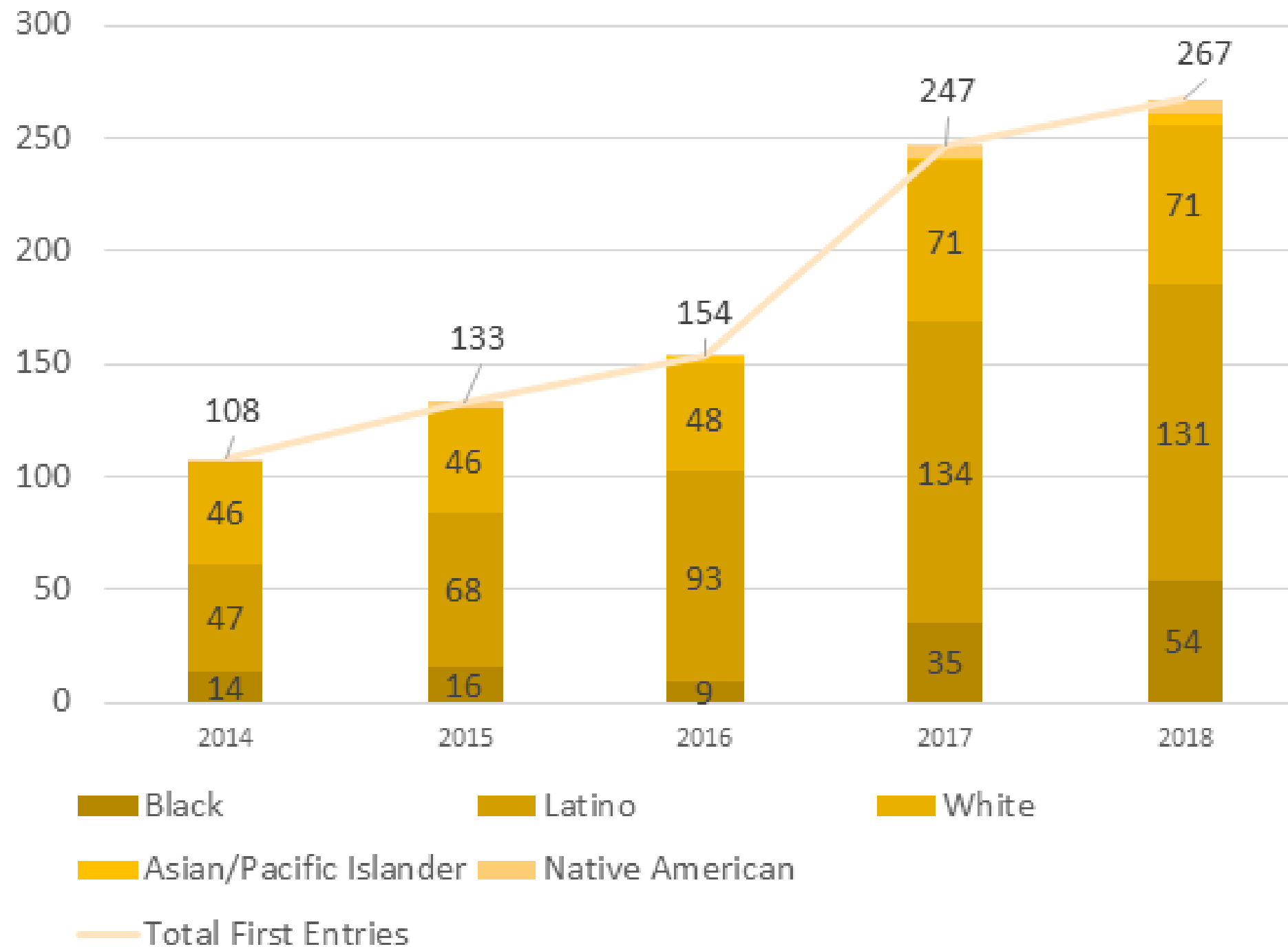
Child Welfare Population

Total Substantiations & Substantiations by Race/Ethnicity



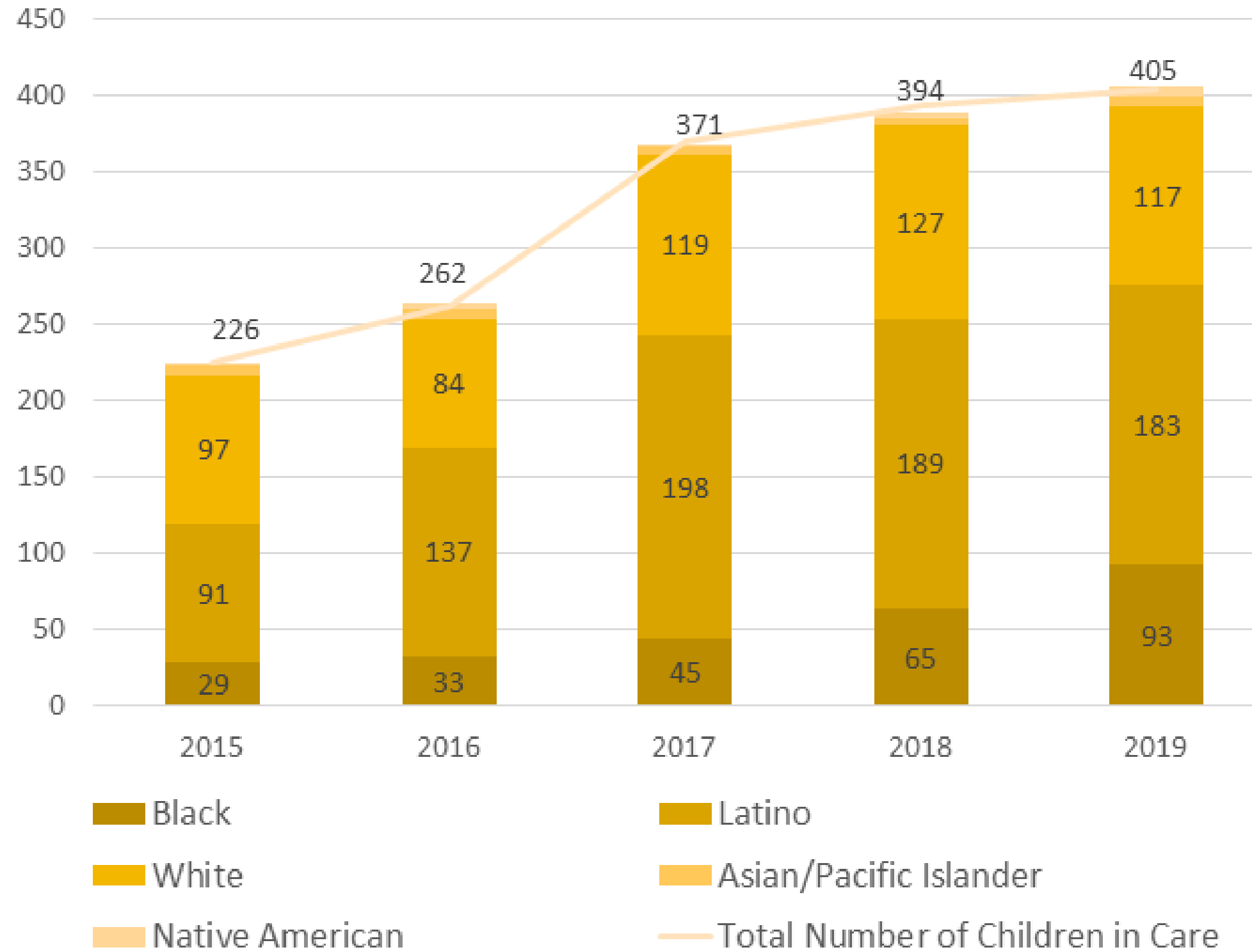
Child Welfare Population

First Entries to Care & First Entries by Race/Ethnicity

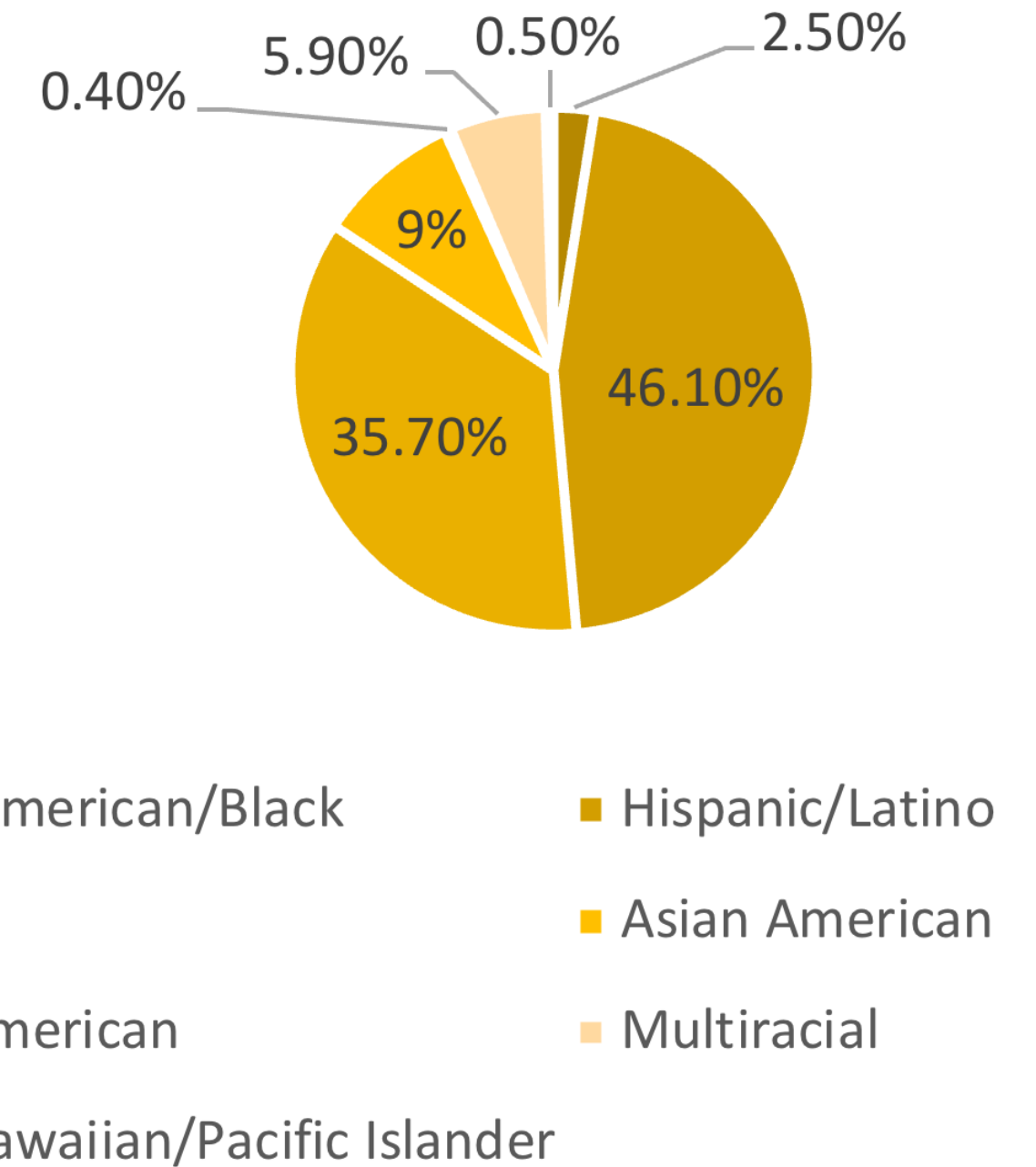


Child Welfare Population

Number of Children in Care



Yolo County Child Population



Outcome Data Measures

AREAS OF STRENGTH



Recurrence of Maltreatment
Permanency in 12 Months (Entering Care)
Permanency in 12 Months (In Care 12-23 Mo.)
Timely Response (Immediate)
Timely Response (10-Day)
Timely Visits
Use of Psychotropic Medications

AREAS NEEDING IMPROVEMENT



Maltreatment in Foster Care
Re-entry to Foster Care in 12 Months
Placement Stability
Timely Medical Exams
Timely Dental Exams





Next Steps

CHILD WELFARE ACTION PLAN

Sunset Current Action Plan; Continue Ongoing Action Items; Roll Major Efforts into SIP

COUNTY SELF-ASSESSMENT (CSA)

Finalize CSA; Receive CDSS Approval; Return to Board for Final Approval

SYSTEM IMPROVEMENT PLAN (SIP)

Development of 5-Year SIP; Presentation of SIP and Board Approval; Implementation

COUNTY STRATEGIC PLAN

Specific Strategy to Partner with FFAs, Local Caregivers and CBOs to Improve Recruitment and Retention of Resource Families

Attachment 8. a.
Nominating Committee Report

