



# COVID-19 VACCINE

## Why Healthcare First?

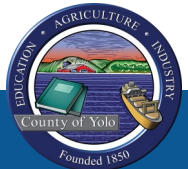


Healthcare workers were prioritized by the CDC if there were limited supplies of the vaccine.

**WHY:** Healthcare workers are on the front lines of the pandemic and at risk of being exposed to COVID-19 each day on the job. Vaccinating healthcare workers first also protects our healthcare capacity and provides continued key services for patients.

**WHO:** Healthcare workers include all paid and unpaid workers who serve in healthcare and have the potential for direct or indirect exposure to patients.

<https://www.yolocounty.org/coronavirus-vaccine>





# COVID-19 VACCINE

## Who's in Phase 1A?

1

**Phase 1A** is the first phase of vaccine distribution in California. Phase 1A is broken down into 3 tiers.

**TIER 1** includes acute and health care staff, including EMTs and paramedics, those working at dialysis centers, and staff and residents at skilled nursing and assisted living facilities.

2

**TIER 2** includes those working in intermediate care facilities, in home support services, community health, including promotoras, public health, and correctional facility/urgent care/primary care clinics.

3

**TIER 3** includes specialty clinic staff, lab workers, dental and oral health workers and pharmacy staff not in higher tiers.

<https://www.yolocounty.org/coronavirus-vaccine>





# COVID-19 VACCINE

## Who's in Phase 1B?

**Phase 1B** includes essential workers.

These are individuals that work in education, food and agriculture, law enforcement, fire, corrections, and transportation, among others.

This phase is still being worked on and more information will be made available once it is known. There is no timeline yet for Phase 1B.



<https://www.yolocounty.org/coronavirus-vaccine>





# COVID-19 VACCINE

## Who's in Phase 1C?

**Phase 1C** includes adults with underlying medical conditions and people over the age of 65 because they are at higher risk of developing serious complications from COVID-19.

This phase is still being worked on and more information will be made available once it is known.



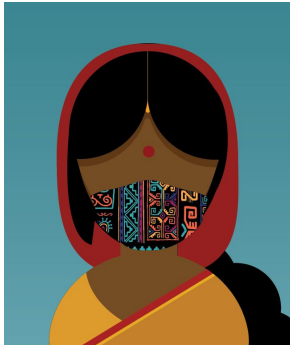
<https://www.yolocounty.org/coronavirus-vaccine>



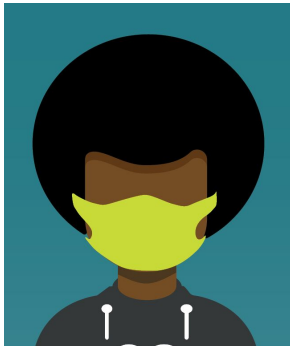


# COVID-19 VACCINE

## Do I Still Need to Wear a Mask?



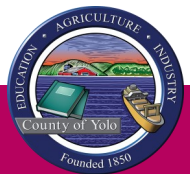
**YES.** Face coverings will still be necessary even after you get the vaccine. The vaccine protects you from developing symptoms and from becoming severely ill. However, it is still unknown if the vaccine prevents someone who's carrying COVID-19 from spreading it to others.



You may not show symptoms but you may still be a carrier for COVID-19. This means that you still need to wear a mask to prevent others from getting sick and keep at least six feet away from others.

**We don't have to wear masks forever, but we do have to wear them.**

<https://www.yolocounty.org/coronavirus-vaccine>





# COVID-19 VACCINE

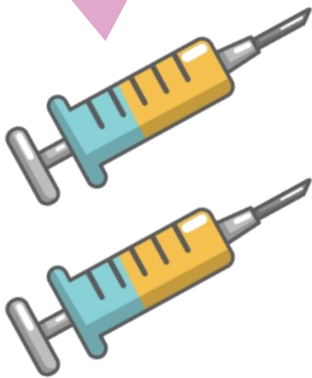
## Which Vaccine are We Getting?

You must take  
2 shots for it  
to be effective!

The Pfizer and Moderna vaccines are mRNA-based, which means that:

- The vaccine gives instructions to our cells to make a piece of protein called a spike protein.
- That protein will begin to trigger an immune response.
- Your body will start making antibodies specifically targeting the coronavirus during future exposure.

It will take time after you receive both vaccine doses to build immunity so you will still need to wear a mask. You can get the vaccine even if you've had COVID-19 in the past.



<https://www.yolocounty.org/coronavirus-vaccine>





# COVID-19 VACCINE

## Are There Side Effects?

You may experience some side effects after getting the vaccine. **THIS IS EXPECTED.** This also means your immune system is responding to the vaccine. These side effects should go away in a few days.

### Common Side Effects:

- Pain on your arm
- Swelling near site
- Fever or chills
- Tiredness
- Headache

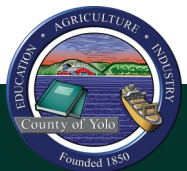
### Helpful Tips:

- Apply a cool, wet washcloth over the area.
- Use or exercise your arm (that received the shot).
- Drink plenty of fluids.



Call your doctor if side effects worsen or do not go away. You can also let the CDC know of any side effects you experience from the COVID-19 vaccine with their new **v-safe health checker** ([www.cdc.gov/vsafe](http://www.cdc.gov/vsafe)).

<https://www.yolocounty.org/coronavirus-vaccine>







# COVID-19 VACCINE

## Is the Vaccine Free?

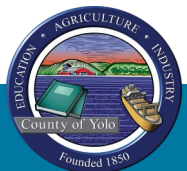


There should be **NO OUT OF POCKET COSTS** for residents who get the COVID-19 vaccine, regardless of if you have health insurance or not.

Medical providers may charge a fee to administer the vaccine but insurance companies are expected to cover this cost. If you receive a bill for your COVID-19 vaccine, you may need to file a claim with your medical insurance company.

For more information about the COVID-19 vaccine visit the website below.

<https://www.yolocounty.org/coronavirus-vaccine>







# COVID-19 VACCINE

## How Do I Get the Vaccine?

Vaccines will be prioritized by group and risk level. The general public may not get an opportunity to get the vaccine until Spring or Summer 2021.

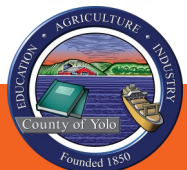
Vaccines will be provided in one of the following ways:

- By your employer
- By public health staff at your work
- By public health staff at a set date and location

The County will notify residents which group is currently in line to get the vaccine and how to get the vaccine once it is known.



<https://www.yolocounty.org/coronavirus-vaccine>





# COVID-19 VACCINE

## How do I Protect Myself Until I Get the Vaccine?

Continue to follow the health and safety measures:



**Wear a face covering.**



**Maintain physical distance.**



**Wash your hands.**



**Don't gather or travel.**

<https://www.yolocounty.org/coronavirus-vaccine>

