



VACCINE ELIGIBILITY DESCRIPTIONS

Groups Eligible as of 03.14.21
Items in red were most recently added

PHASE 1A

HEALTHCARE



Persons at risk of direct patient exposure in the following settings and/or roles:

- Health care providers and caregivers (including physicians, dentists, psychologists, mid-level practitioners, nurses, assistants, and aides; infection control personnel; pharmacists; physical, respiratory, speech and occupational therapists and assistants; social workers and providers serving individuals with disabilities including developmental disabilities; optometrists; speech pathologists; chiropractors; diagnostic and therapeutic technicians; and radiology technologists)
- Informal family caregivers and in-home supportive services (IHSS) providers
- Emergency medical services providers
- Clinical and non-clinical workers in urgent care centers, hospitals, outpatient clinics, home care, long-term care facilities, dialysis centers, blood banks, and retail facilities specializing in medical goods and supplies
- Workplace safety personnel
- Transportation to and from healthcare facilities and appointments
- Health care vendors and suppliers
- Workers performing COVID-19 clinical research, and testing
- Health manufacturing and supply, including PPE
- Public health and community health workers
- Environmental health workers
- Behavioral and mental health workers
- Workers performing IT, cybersecurity, security, incident management, and emergency operations functions at health care and public health facilities
- Pharmacy employees
- **Alternative medical practitioners, including massage therapists**
- **Couriers for vaccines and emergency supplies**

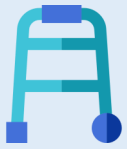
LONG-TERM CARE FACILITY RESIDENT



- Residents of skilled nursing facilities, assisted living facilities, and similar long-term care settings for older or medically vulnerable individuals

PHASE 1B / TIER 1

65+



- Any individual 65 years or older

CHILD CARE



- Formal childcare workers
- Informal childcare workers including:
 - * Day care providers
 - * Staff and volunteers in public and private recreation programs
 - * Staff of on- or off-campus afterschool programs
 - * Individuals or programs receiving a childcare subsidy
 - * Resource Family-approved homes and certified family homes providing emergency or short-term foster care
 - * Those working in Children's Residential Community Care facilities (e.g., Short-Term Residential Therapeutic Program, group homes, temporary shelter care facilities)
 - * Those providing occasional babysitting are NOT eligible
- Staff in afterschool programs NOT located on school campuses

EDUCATION



- TK-12 staff
- Staff in postsecondary education facilities
- Staff in educational support services and administration
- Staff in technical and trade schools
- Workers involved in student care, including school bus drivers and monitors, crosswalk guards, etc.
- School-based athletics coaches
- School-based tutors
- Library staff with occupational exposure to students

EMERGENCY SERVICES



Persons at risk of occupational exposure to coronavirus through work in:

- Emergency management, law enforcement, fire and rescue services, corrections, rehabilitation and reentry, search and rescue, and hazardous material response
- 911/dispatch and emergency alert systems
- Weather disaster / natural hazard response, including wildfire mitigation activities
- Response to abuse and neglect of children, elders, and dependent adults, including social workers
- Animal control

(Emergency Services continues on the next page)

EMERGENCY SERVICES (cont'd)



- Security to maintain building access control and physical security measures
- Maintenance and supply of public safety facilities
- District attorney and public defender personnel
- Disaster service workers currently activated for an emergency
- Emergency utility support (electricity, gas water, waste, roads/highways)
- Janitorial services

FOOD AND AGRICULTURE



- Persons at risk of occupational exposure to coronavirus through work in:
- Grocery, pharmacy, convenience stores, or other retail that sells food or beverages, including pet food
 - Farming and agribusiness, including farmers and farm/ranch workers
 - Food manufacturing and beverage production
 - Restaurants or cafeterias
 - Veterinary and animal sheltering services
 - Production of food packaging, including recycling operations and processing
 - Plant nurseries
 - Cannabis industry
 - Government oversight of food and agriculture operations
 - Food assistance programs (including food banks) and government payments
 - Food delivery services

HIGH-RISK CONDITIONS AND SPECIALIZED SETTINGS

HIGH-RISK CONDITIONS



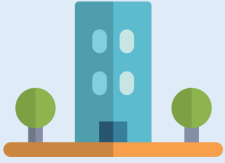
- Cancer, current
- Chronic kidney disease, stage 4 or above
- Chronic pulmonary disease, oxygen-dependent
- Down syndrome
- Solid organ transplant with weakened immune system
- Pregnancy
- Sickle cell disease
- Heart conditions, such as heart failure, coronary artery disease, or cardiomyopathy (excludes hypertension)
- Severe obesity (BMI \geq 40 kg/m²)
- Type 2 diabetes with hemoglobin A1c level $>$ 7.5%

DISABILITIES



- As a result of a developmental or other severe high-risk disability, one or more of the following applies:
 - * The individual is likely to develop severe COVID-19 or death if infected
 - * Having COVID-19 will limit their ability to receive ongoing care or services
 - * Providing adequate and timely COVID care will be particularly challenging

**HIGH-RISK
SETTINGS**



Individuals who reside or work in a high-risk congregate residential setting:

- Incarceration/detention facility
- Homeless shelter
- Behavioral health facility
- All people experiencing homelessness

OTHER SETTINGS



- Public transit workers
- Airport and commercial airline workers

For an even more comprehensive list, visit <https://covid19.ca.gov/essential-workforce/> and <https://www.cdph.ca.gov/Programs/CID/DCDC/Pages/COVID-19/VaccineAllocationGuidelines.aspx>.