

YOLO COUNTY ASSISTED OUTPATIENT TREATMENT

Karen Larsen, Director of Yolo County HHSA
Julie Freitas, Clinical Manager, Yolo County HHSA



WELLNESS • RECOVERY • RESILIENCE

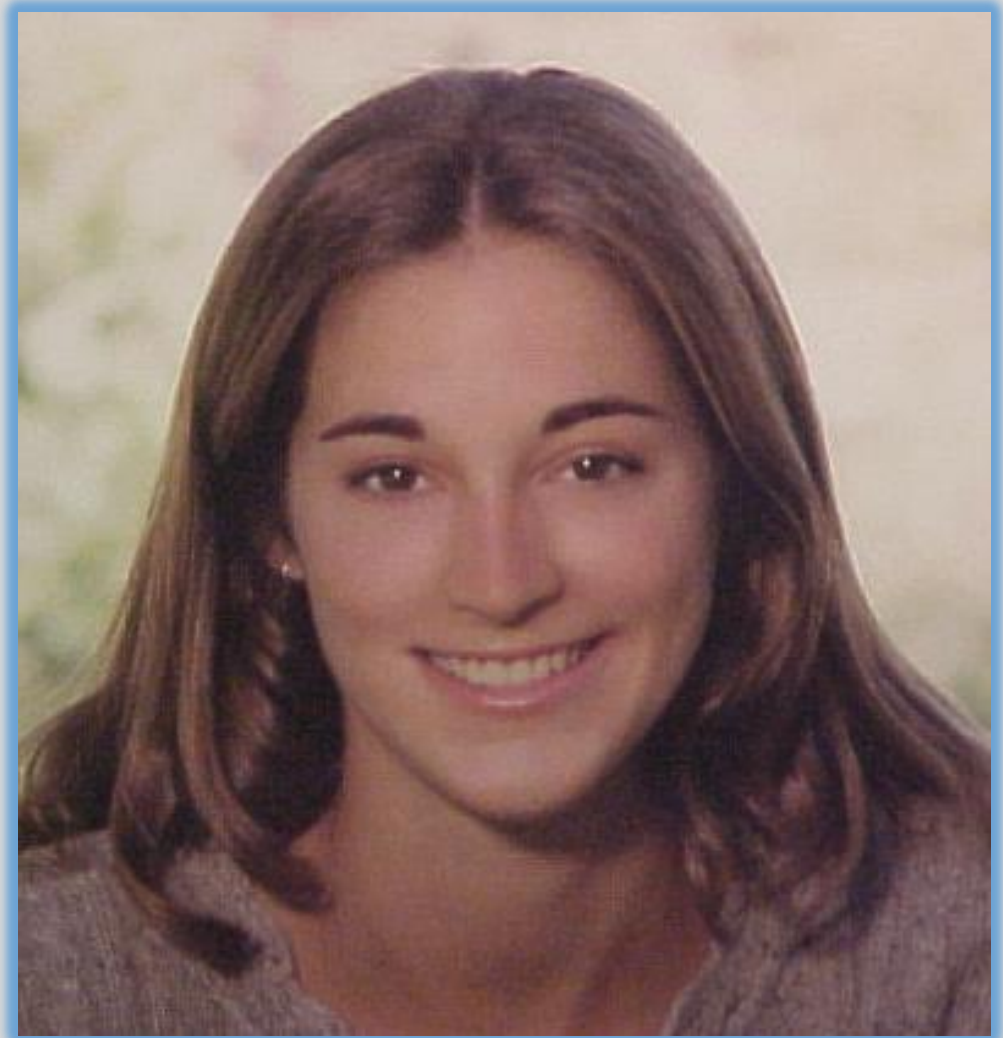


TURNING POINT
COMMUNITY PROGRAMS

Laura's Law

“In January 2001, the world was forever diminished by the loss of an incredible young woman- my only daughter, Laura Wilcox.”

**- Amanda Wilcox,
mother of Laura
Wilcox**



Helen Thomson of Davis, a member of the California Assembly, wrote Laura's Law (AB1421 and WIC 5345) in 2002. Thomson's bill was signed by Governor Gray Davis.



AOT SERVICE MODEL



ELIGIBILITY CRITERIA FOR AOT

A person must meet all of these conditions to be eligible for AOT:

- County resident, minimum age 18
- Serious Mental Disorder (WIC 5600.3)
- Mental health condition is getting substantially worse
- Unlikely to survive safely in the community without supervision
- Lack of treatment compliance indicated by:
 - Has been hospitalized due to mental illness at least twice in the last 36 months, OR
 - One or more serious acts of violence toward themselves or others within the last 48 months
- The person has been offered an opportunity to participate in treatment, but did not engaged
- Participating in AOT would be the least restrictive option to ensure recovery and stability
- Likely to benefit from participating in AOT

WHO CAN REQUEST AOT

To request an AOT investigation, the referring party must be:

- Anyone 18 or older with whom the person is living with

- A parent, spouse or child of the person who is 18 or older

- The director of any agency providing mental health services to the person

- The director of a hospital where the person is hospitalized

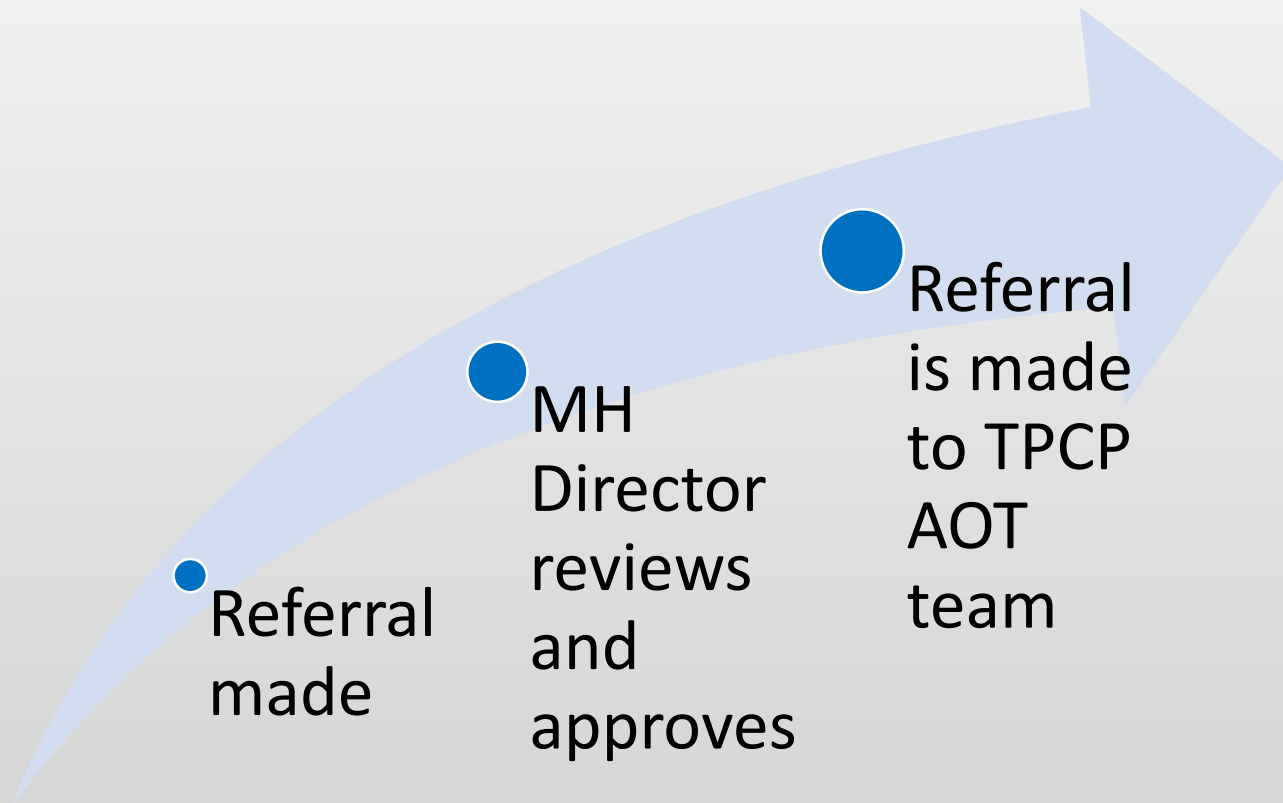
- A licensed mental health clinician who is providing or supervising the person's mental health treatment

- A probation or peace officer assigned to the person

HOW TO REQUEST AOT

If you are a Qualified Requesting Party, and you think an individual meets the conditions for AOT eligibility, please call 530-666-8630 and ask to speak to the clinical manager of AOT to request an investigation. The clinical manager will return your call to review your request with you. **Please be ready to give examples of how the person meets AOT criteria.**

THE AOT PROCESS



AOT PARTICIPANTS BY YEAR

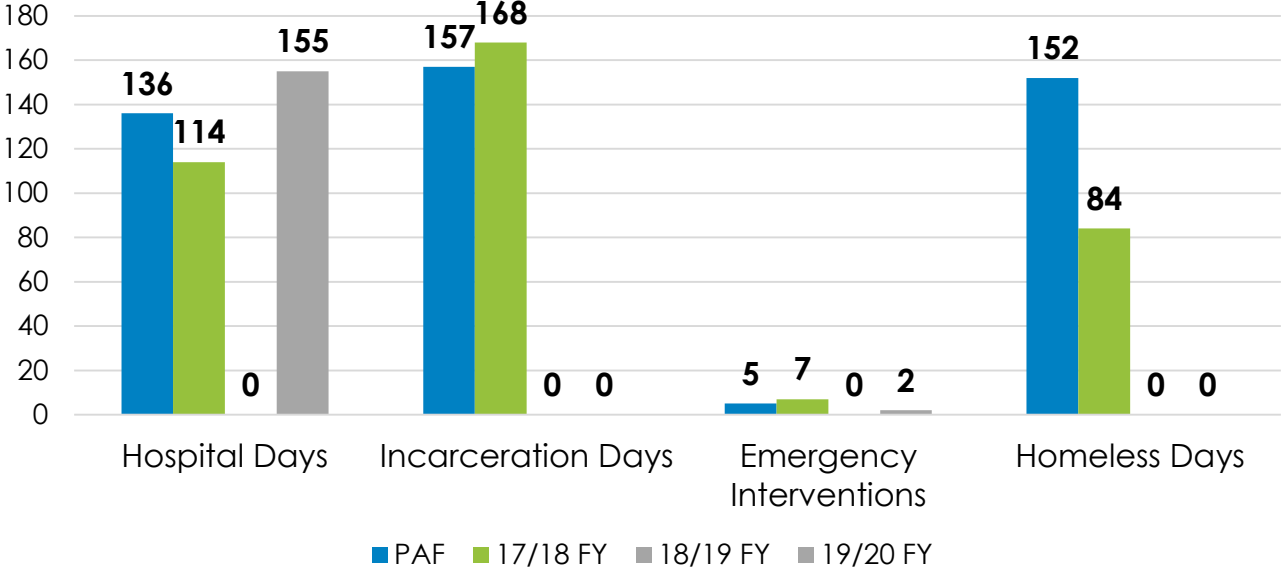
2013/14	2014/15	2015/16	2016/17	2017/18	2018/19	2019/2020
8	10	8	6	7	5	5

*this count is duplicated

OF AOT SLOTS PER SIMILAR SIZE COUNTY

Yolo County	San Luis Obispo County	Santa Barbara County	Nevada County
5-8 slots	10 pilot slots	8 slots	5 slots

Yolo AOT Big 4 Data: Overview

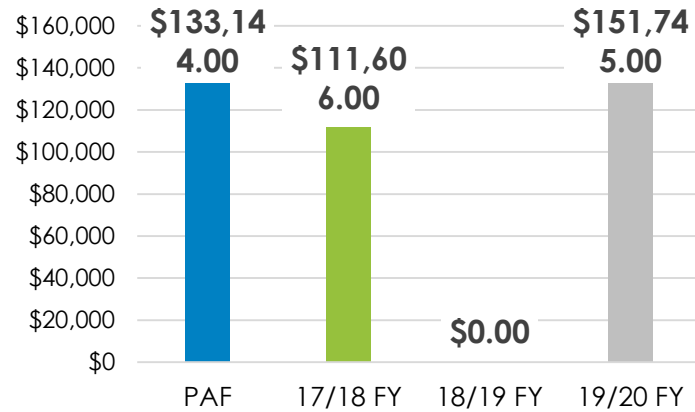
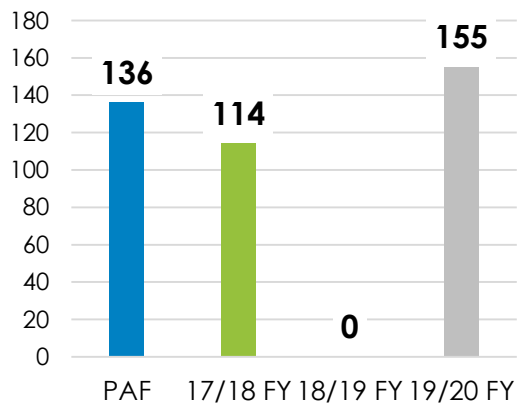


*PAF (Partnership Assessment Form) = 12 Months Pre-Enrollment
 IMDs are not included in the psychiatric hospital days.



Yolo AOT Data: Psychiatric Hospital Days

Average Cost per Day: \$979

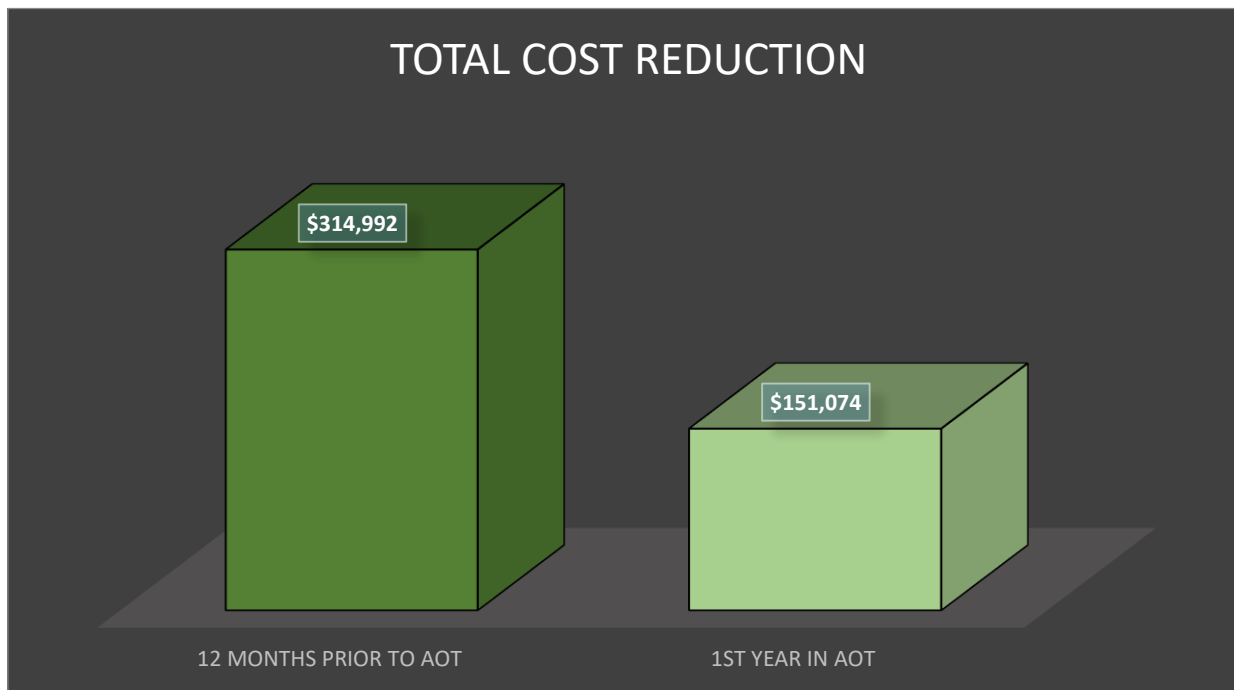


One client out of the 5 served in 19/20 FY had accrued hospital days. Four clients had accrued zero days during the 19/20 FY.

IMDs are not included within the psychiatric hospitalization days. One should note that one client accrued 301 IMD days in addition to the psychiatric hospital days prior to AOT enrollment.

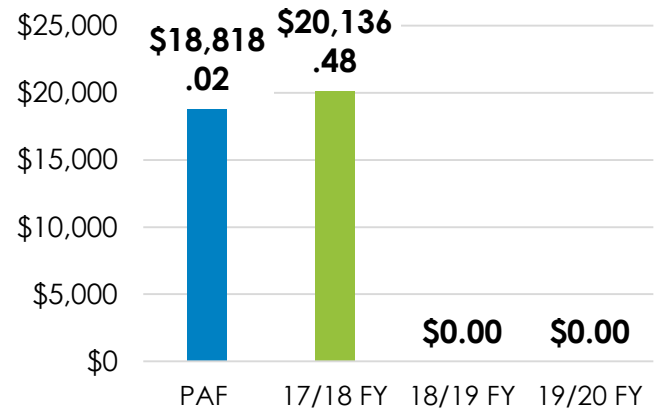
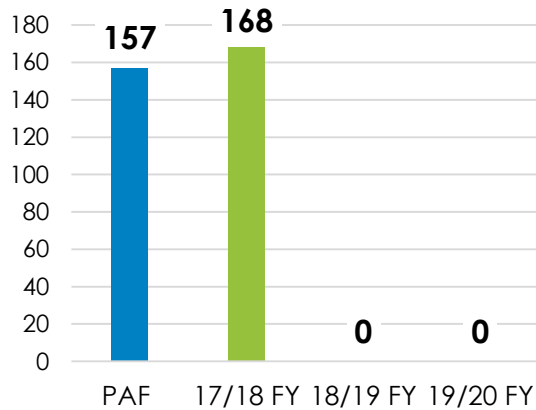


COST REDUCTION IN AOT



Yolo AOT Data: Incarceration Days

Average Cost per Day: \$119.86

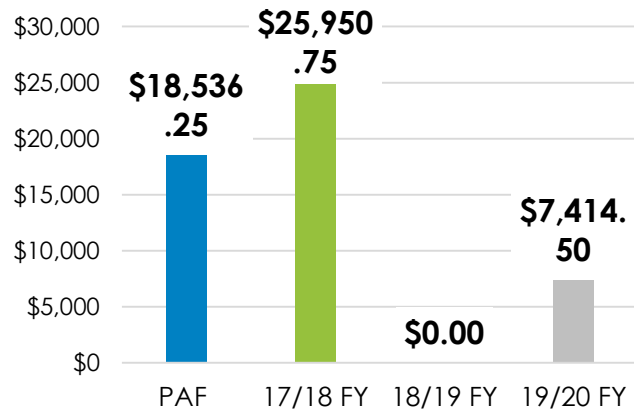
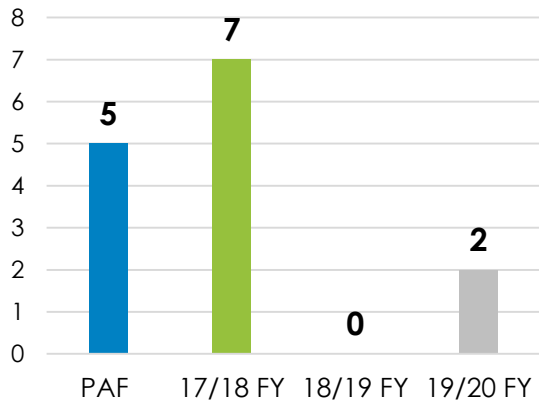


Five clients out of the 5 served in 19/20 FY had accrued zero days.



Yolo AOT Data: Emergency Interventions

Average Cost
per Day:
\$3,707.25



One client out of the 5 served in the 19/20 FY had emergency interventions occur. Four clients had no emergency interventions occur during the 19/20 FY.



Final Thoughts

- AOT has shown to have a positive impact on mental health services throughout the continuum of care
- AOT saves lives, protects civil rights, and improves the quality of life for the individual, family, and community
- AOT Provides treatment *before* an individual becomes gravely disabled, does harm to self or others
- Mental illness is a no-fault disability like heart disease or cancer, and it demands the same access to services
- Our residents with mental illness deserve better



Questions or Comments





TURNING POINT COMMUNITY PROGRAMS

A Path to Mental Health



WELLNESS • RECOVERY • RESILIENCE

