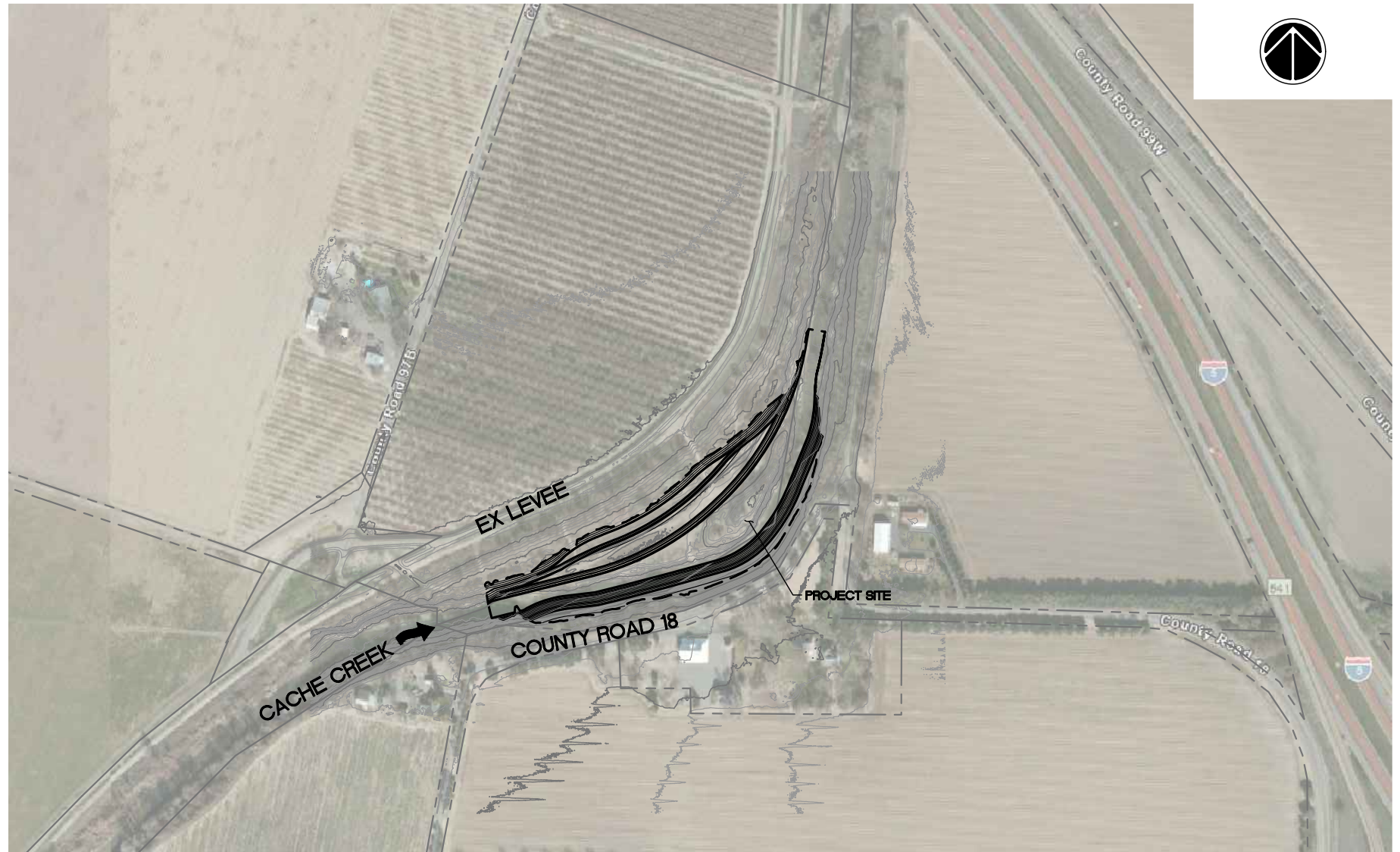


HUFF'S CORNER IN-CHANNEL STABILIZATION PROJECT

DRAFT 95% DESIGN



PROJECT LOCATION MAP
NOT TO SCALE



PROJECT VICINITY MAP

SCALE: 1" = 200'
0 100' 200' 400'

SHEET INDEX

- C1 TITLE SHEET
- C2 PROJECT OVERVIEW
- C3 TYPICAL SECTION AND PROFILE
- C4 GRADING PLAN
- C5 GRADING PLAN TABLES
- C6 DETAILS (1 OF 2)
- C7 DETAILS (2 OF 2)
- C8 SECTIONS (1 OF 2)
- C9 SECTIONS (2 OF 2)
- C10 PLANTING PLAN

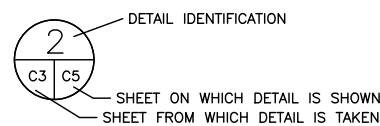
ABBREVIATIONS

APN	ASSESSOR'S PARCEL NUMBER	LF	LINEAR FEET
CALTRANS	CALIFORNIA DEPARTMENT OF TRANSPORTATION	MIN	MINIMUM
CL	CENTERLINE	NTS	NOT TO SCALE
EG	EXISTING GROUND	O.C.	ON CENTER
ELEV	ELEVATION	PROP	PROPOSED
EX	EXISTING	RSP	ROCK SLOPE PROTECTION
FG	FINISHED GRADE	SHT	SHEET
GAL	GALLON	STA	STATION
H	HORIZONTAL	TBD	TO BE DETERMINED
		TYP	TYPICAL
		V	VERTICAL

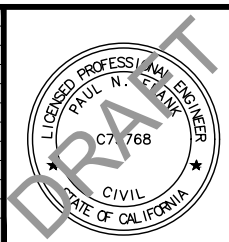
LEGEND

EXISTING GROUND CONTOURS	
FINISHED GRADE CONTOURS	
PARCEL LINE	

DETAIL REFERENCE CONVENTION



REVISION NO.	DATE	DESCRIPTION



FlowWest
1624 FRANKLIN STREET
OAKLAND, CA 94612
510.842.0538

PREPARED FOR:

TITLE SHEET

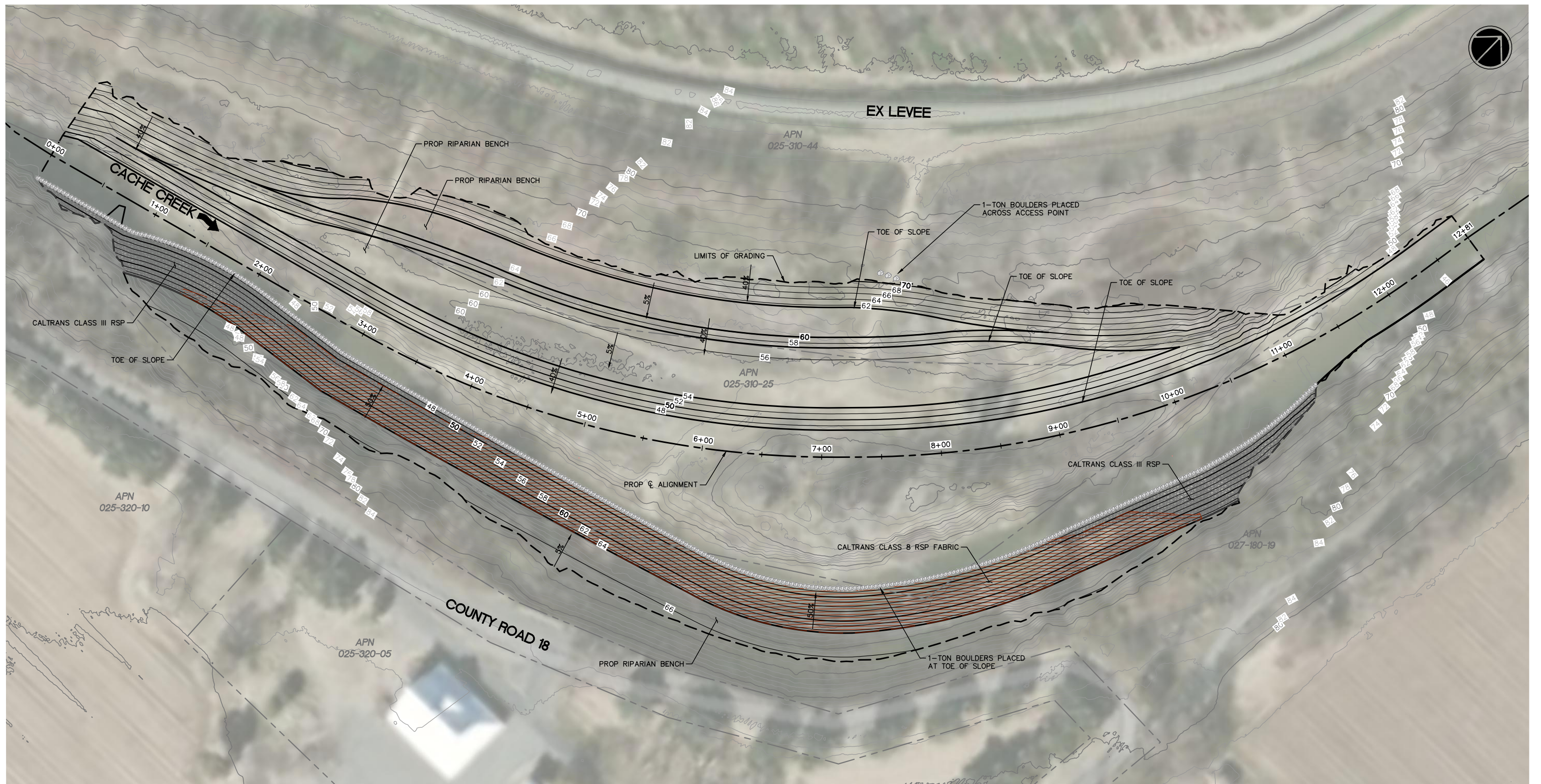
HUFF'S CORNER IN-CHANNEL STABILIZATION PROJECT
DRAFT 95% DESIGN

DRAFT 95% DESIGN
NOT FOR CONSTRUCTION

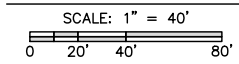
DATE: 10/2020

DRAWN BY: CELEJALDE
CHECKED BY: CHANLEY

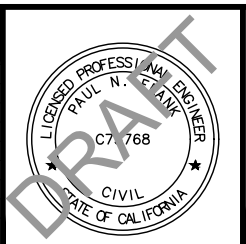
SHEET: C1



OVERVIEW PLAN



REVISION NO.	DATE	DESCRIPTION



FlowWest
 1624 FRANKLIN STREET
 OAKLAND, CA 94612
 510.842.0538

PREPARED FOR:

PROJECT OVERVIEW
**HUFF'S CORNER IN-CHANNEL
 STABILIZATION PROJECT**
 DRAFT 95% DESIGN

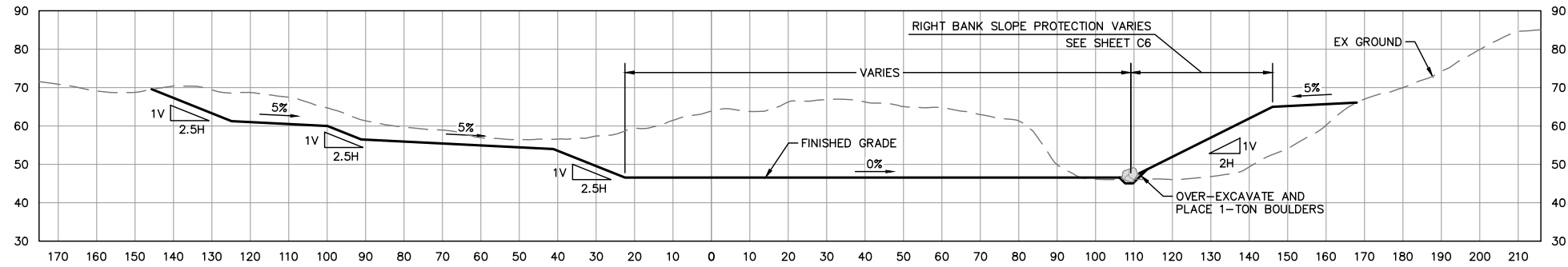
**DRAFT 95% DESIGN
 NOT FOR CONSTRUCTION**

DATE: 10/2020

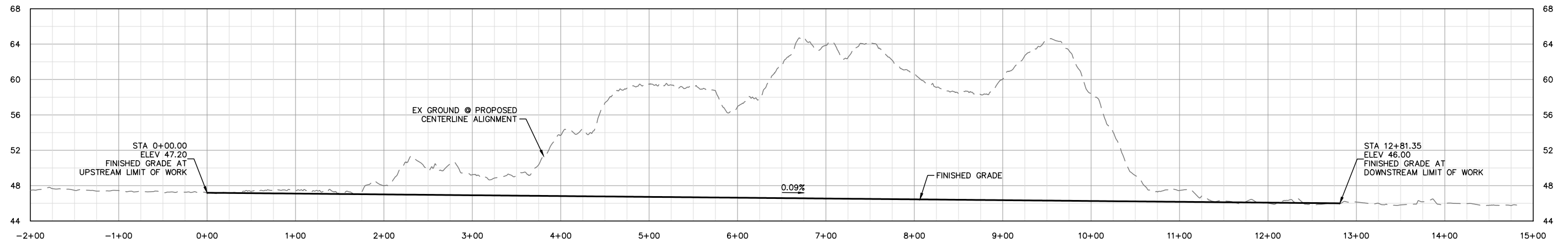
DRAWN BY: CELEJALDE
 CHECKED BY: CHANLEY

SHEET:
C2

Z:\Active_Projects\004-06_Huffs_Corner\CADD\DWG\Huffs_Corner_Plans.dwg



TYPICAL SECTION A
SCALE: 1" = 20'



PROPOSED CENTERLINE PROFILE
HORIZONTAL SCALE: 1" = 50'
VERTICAL SCALE: 1" = 5'

Z:\Active_Projects\004-06_Huffs_Corner\CADD\DWG\Huffs_Corner_Plans.dwg

REVISION NO.	DATE	DESCRIPTION



FlowWest
1624 FRANKLIN STREET
OAKLAND, CA 94612
510.842.0538

PREPARED FOR:

TYPICAL SECTION AND PROFILE

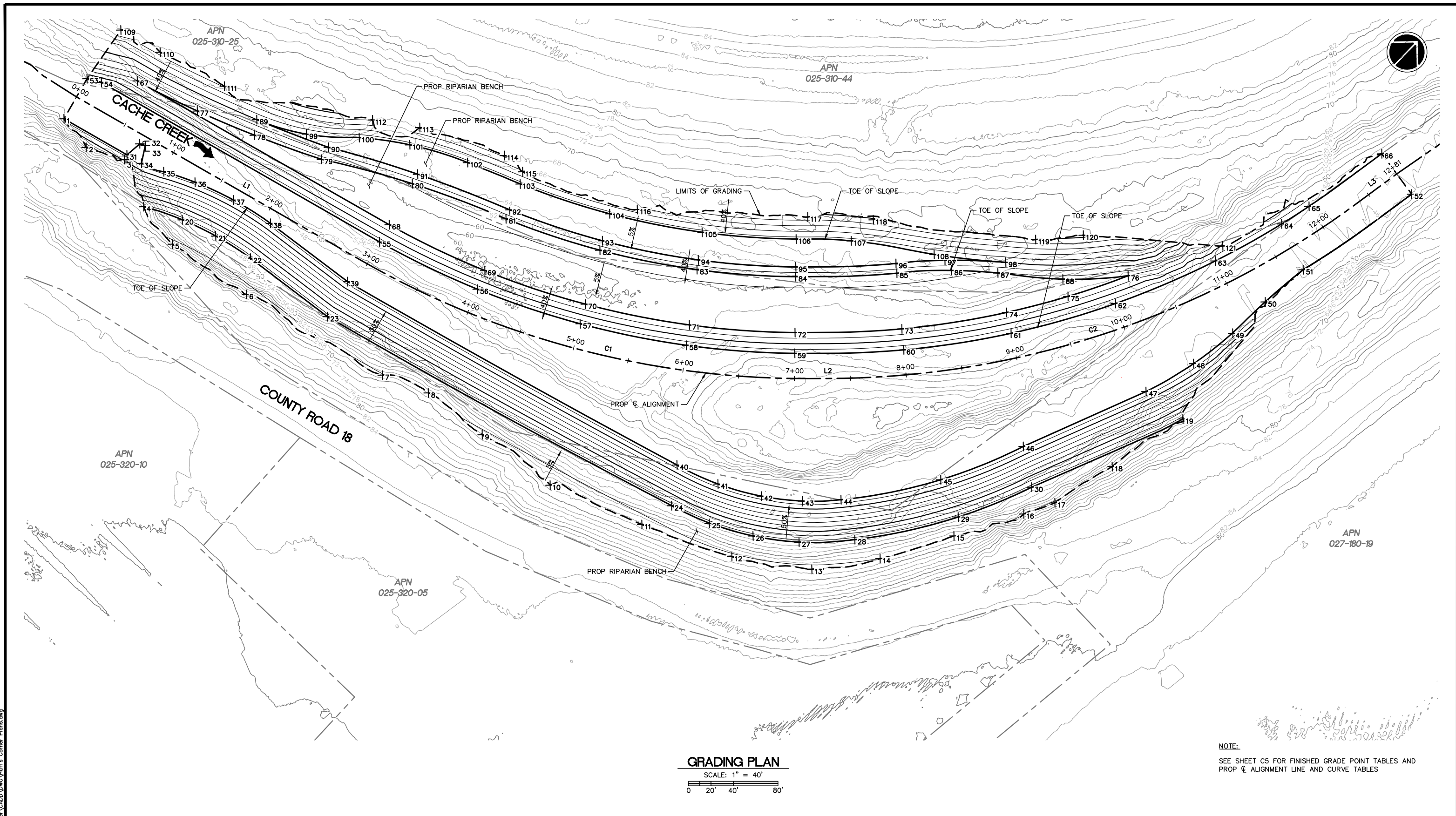
HUFF'S CORNER IN-CHANNEL STABILIZATION PROJECT
DRAFT 95% DESIGN

DRAFT 95% DESIGN
NOT FOR CONSTRUCTION

DATE: 10/2020

DRAWN BY: CELEJALDE
CHECKED BY: CHANLEY

SHEET: **C3**



GRADING PLAN
 SCALE: 1" = 40'
 0 20' 40' 80'

NOTE:
 SEE SHEET C5 FOR FINISHED GRADE POINT TABLES AND
 PROP C ALIGNMENT LINE AND CURVE TABLES

REVISION NO.	DATE	DESCRIPTION



FlowWest
 1624 FRANKLIN STREET
 OAKLAND, CA 94612
 510.842.0538

PREPARED FOR:

GRADING PLAN
**HUFF'S CORNER IN-CHANNEL
 STABILIZATION PROJECT**
DRAFT 95% DESIGN

**DRAFT 95% DESIGN
 NOT FOR CONSTRUCTION**

DATE: 10/2020
 SHEET: **C4**

DRAWN BY: CELEJALDE
 CHECKED BY: CHANLEY

Z:\Active Projects\04-06_Huffs_Corner\CADD\DWG\Huffs_Corner_Plans.dwg

POINT TABLE			
POINT #	NORTHING	EASTING	ELEVATION
1	2024536.97	6615753.14	47.20
2	2024532.24	6615785.23	53.34
3	2024548.02	6615817.37	49.53
4	2024529.62	6615859.10	65.12
5	2024523.15	6615900.84	66.19
6	2024536.69	6615979.91	66.41
7	2024568.80	6616117.57	66.05
8	2024585.79	6616158.27	65.74
9	2024592.20	6616218.99	66.22
10	2024601.76	6616294.14	66.79
11	2024633.20	6616377.69	66.44
12	2024668.33	6616455.63	66.14
13	2024709.70	6616515.13	66.19
14	2024758.96	6616552.54	66.00
15	2024819.33	6616586.17	65.76
16	2024876.80	6616617.68	65.96
17	2024903.25	6616630.82	66.08
18	2024962.22	6616645.30	65.60
19	2025036.75	6616661.44	65.00
20	2024545.05	6615892.17	65.00
21	2024555.30	6615923.76	65.00
22	2024562.53	6615959.96	65.00
23	2024572.53	6616045.86	65.00
24	2024663.86	6616385.26	65.00
25	2024675.69	6616420.54	65.02
26	2024694.76	6616456.55	65.00
27	2024719.30	6616490.06	65.00
28	2024755.51	6616524.52	65.00
29	2024834.16	6616577.19	65.00
30	2024898.96	6616606.16	65.00
31	2024552.66	6615816.21	47.14
32	2024567.72	6615817.62	47.13
33	2024570.13	6615822.17	47.13
34	2024556.28	6615830.76	47.12
35	2024564.59	6615850.40	47.10
36	2024577.26	6615877.08	47.07
37	2024589.57	6615912.92	47.04
38	2024597.46	6615951.27	47.00
39	2024607.62	6616037.18	46.92
40	2024693.43	6616363.47	46.63
41	2024706.57	6616401.69	46.60

POINT TABLE			
POINT #	NORTHING	EASTING	ELEVATION
42	2024725.63	6616437.22	46.57
43	2024747.96	6616466.78	46.54
44	2024772.70	6616490.86	46.51
45	2024847.41	6616542.80	46.43
46	2024920.08	6616575.45	46.37
47	2025031.61	6616620.61	46.27
48	2025079.11	6616634.03	46.22
49	2025123.00	6616640.43	46.41
50	2025163.39	6616641.96	46.15
51	2025207.67	6616646.47	46.11
52	2025323.70	6616669.62	46.00
53	2024577.13	6615743.15	48.00
54	2024583.72	6615754.65	48.00
55	2024653.04	6616033.19	46.92
56	2024688.17	6616125.53	46.82
57	2024724.60	6616213.37	46.74
58	2024776.62	6616295.39	46.64
59	2024838.49	6616370.25	46.55
60	2024908.38	6616438.44	46.45
61	2024985.56	6616497.40	46.36
62	2025069.48	6616546.29	46.27
63	2025158.84	6616584.33	46.18
64	2025223.88	6616604.20	46.11
65	2025252.24	6616610.95	46.08
66	2025331.24	6616625.32	46.00
67	2024606.89	6615776.96	54.00
68	2024670.18	6616028.76	54.00
69	2024699.85	6616118.90	54.00
70	2024740.50	6616204.62	54.00
71	2024791.52	6616284.57	54.00
72	2024852.08	6616357.52	54.00
73	2024920.75	6616424.19	54.00
74	2024996.18	6616481.54	54.00
75	2025044.65	6616511.26	54.00
76	2025095.23	6616537.28	54.00
77	2024624.64	6615834.38	54.17
78	2024644.34	6615886.15	54.49
79	2024670.41	6615944.52	55.04
80	2024710.96	6616018.22	56.11
81	2024746.32	6616100.45	56.50
82	2024784.32	6616180.51	56.51

POINT TABLE			
POINT #	NORTHING	EASTING	ELEVATION
83	2024831.98	6616255.20	56.50
84	2024888.57	6616323.32	56.51
85	2024953.53	6616386.44	56.50
86	2024989.19	6616420.00	56.31
87	2025016.30	6616451.49	55.81
88	2025052.60	6616497.22	54.81
89	2024655.90	6615878.13	60.00
90	2024682.45	6615941.53	60.00
91	2024720.41	6616015.78	60.00
92	2024754.45	6616097.22	60.00
93	2024791.99	6616176.29	60.00
94	2024839.06	6616250.06	60.00
95	2024894.96	6616317.33	60.00
96	2024959.27	6616379.83	60.00
97	2024991.64	6616409.47	60.00
98	2025028.08	6616449.95	60.00
99	2024677.37	6615919.16	60.22
100	2024707.84	6615955.37	60.80
101	2024734.51	6615992.53	61.16
102	2024758.89	6616040.82	61.26
103	2024777.63	6616088.02	61.25
104	2024813.89	6616164.24	61.26
105	2024859.29	6616235.37	61.25
106	2024913.20	6616300.24	61.26
107	2024946.12	6616336.90	61.14
108	2024988.80	6616398.86	60.28
109	2024629.49	6615734.84	68.00
110	2024639.54	6615773.99	66.95
111	2024657.45	6615836.52	66.35
112	2024727.56	6615953.04	68.23
113	2024751.88	6615988.21	68.32
114	2024786.30	6616060.25	68.49
115	2024787.08	6616082.03	65.62
116	2024833.78	6616179.42	65.12
117	2024934.58	6616294.11	69.13
118	2024973.41	6616338.09	70.92
119	2025061.29	6616455.16	69.45
120	2025093.67	6616483.22	70.78
121	2025173.16	6616579.86	49.72


LINE TABLE: PROP \varnothing ALIGNMENT			
LINE #	LENGTH	BEARING	START POINT
L1	292.66	N76° 01' 54.97"E	(6615747.70, 2024558.81)
L2	17.74	N45° 58' 14.84"E	(6616394.62, 2024830.60)
L3	44.33	N9° 40' 03.67"E	(6616639.99, 2025283.77)

CURVE TABLE: PROP \varnothing ALIGNMENT				
CURVE #	LENGTH	DELTA	RADIUS	START POINT
C1	419.73	30° 03' 40"	800.00	(6616031.71, 2024629.45)
C2	506.89	36° 18' 11"	800.00	(6616407.37, 2024842.93)

Z:\Active_Projects\004-06_Huffs_Corner\CADD\DWG\Huffs_Corner_Plans.dwg

REVISION NO.	DATE	DESCRIPTION



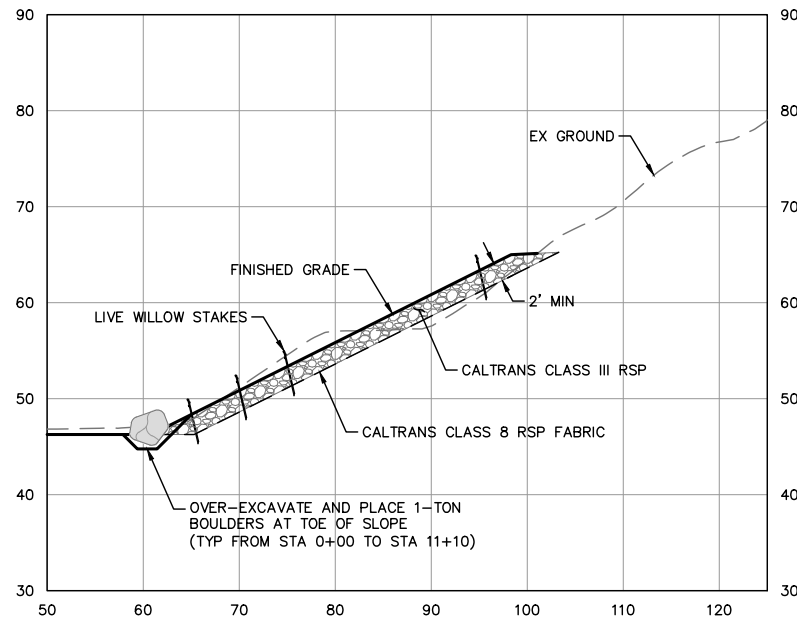

 1624 FRANKLIN STREET
 OAKLAND, CA 94612
 510.842.0538

PREPARED FOR:

GRADING PLAN TABLES

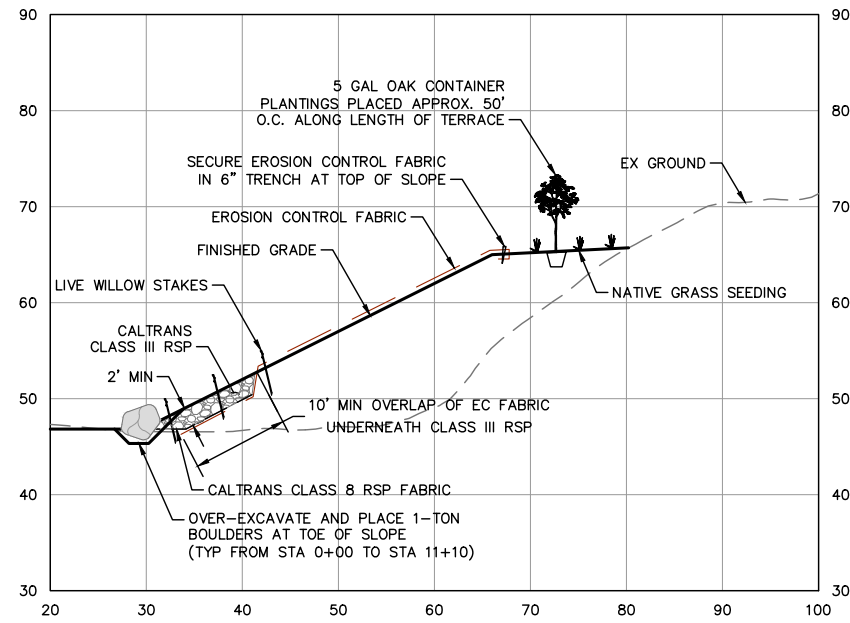
**HUFF'S CORNER IN-CHANNEL
 STABILIZATION PROJECT
 DRAFT 95% DESIGN**

DRAFT 95% DESIGN NOT FOR CONSTRUCTION	
DATE: 10/2020	DRAWN BY: CELEJALDE CHECKED BY: CHANLEY
SHEET: C5	



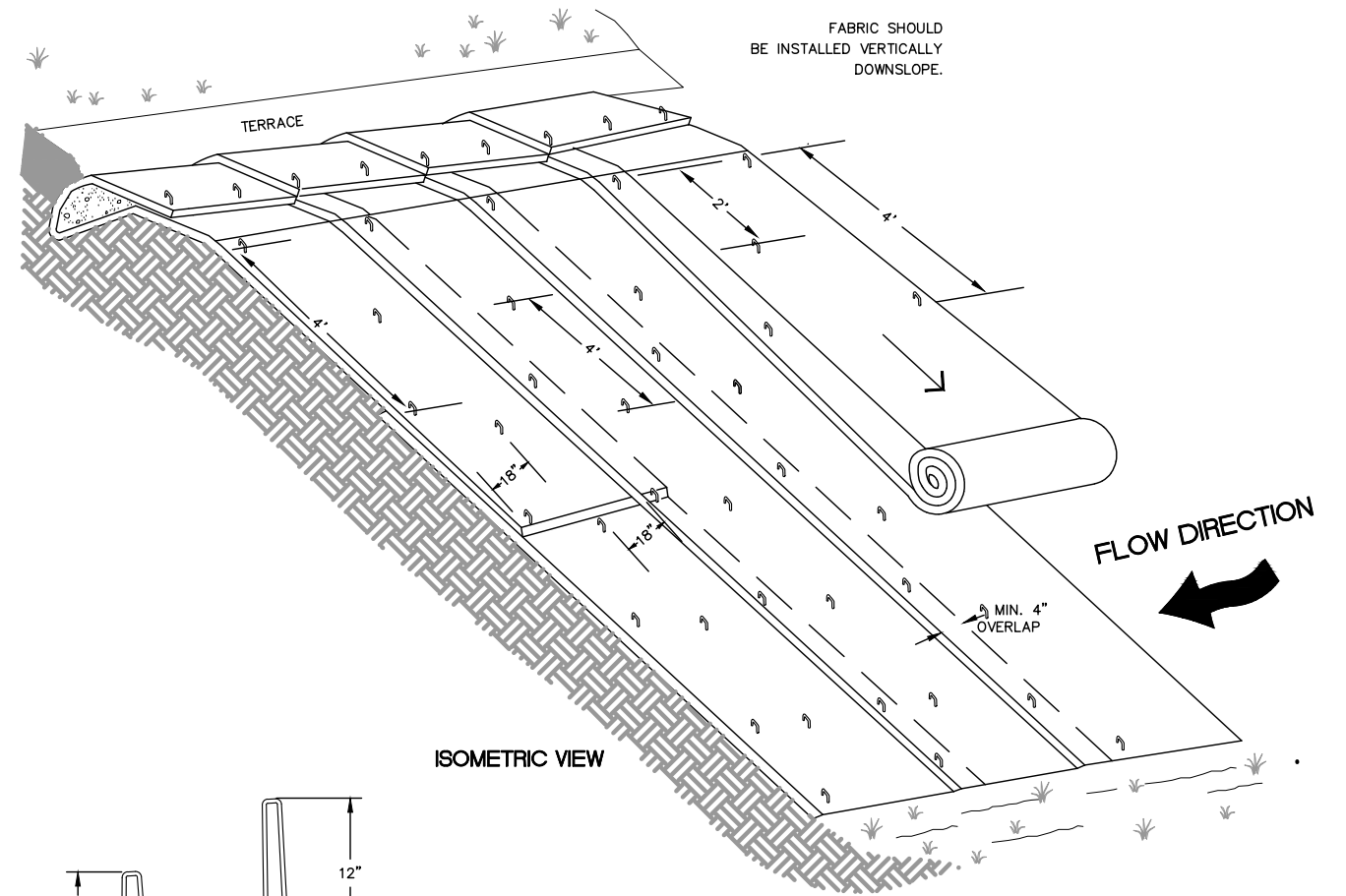
RSP UP ENTIRE SLOPE FACE

SCALE: 1" = 10'

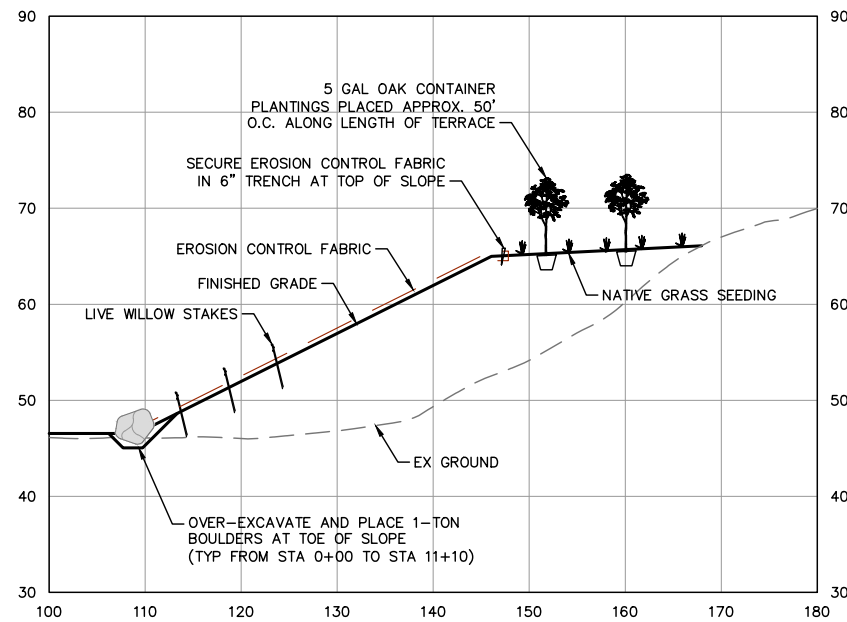


RSP AND RSP FABRIC TRANSITION

SCALE: 1" = 10'

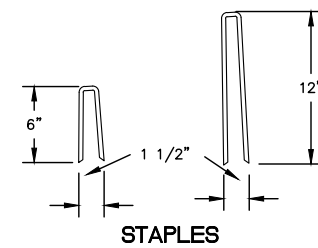


ISOMETRIC VIEW



RSP FABRIC UP ENTIRE SLOPE FACE

SCALE: 1" = 10'

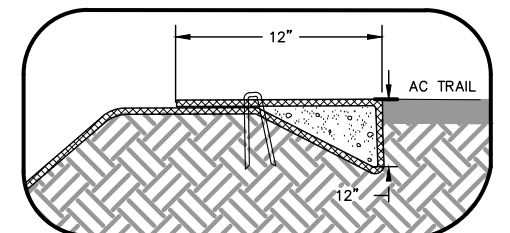


STAPLES

TYPICAL SLOPE SOIL STABILIZATION

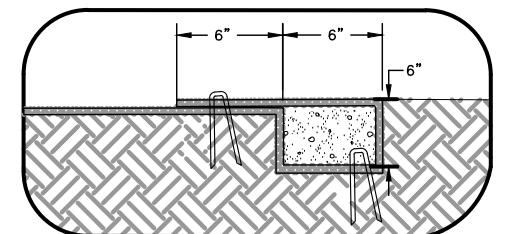
NOTES:

1. SLOPE SURFACE SHALL BE FREE OF ROCKS, CLODS, STICK AND GRASS. MATS/BLANKETS SHALL HAVE GOOD SOIL CONTACT.
2. APPLY SEEDING BEFORE PLACING FABRIC.
3. LAY FABRIC LOOSELY AND STAKE OR STAPLE TO MAINTAIN DIRECT CONTACT WITH THE SOIL. DO NOT STRETCH.
4. STAPLE UPSTREAM EDGE AT 12" INTERVALS.



TOP OF SIDE SLOPE DETAIL

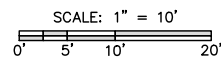
NOT TO SCALE



UPSTREAM EDGE DETAIL

EROSION CONTROL FABRIC DETAIL

SCALE: NOT TO SCALE



REVISION NO.	DATE	DESCRIPTION



FlowWest
 1624 FRANKLIN STREET
 OAKLAND, CA 94612
 510.842.0538

PREPARED FOR:

DETAILS (1 OF 2)
HUFF'S CORNER IN-CHANNEL STABILIZATION PROJECT
DRAFT 95% DESIGN

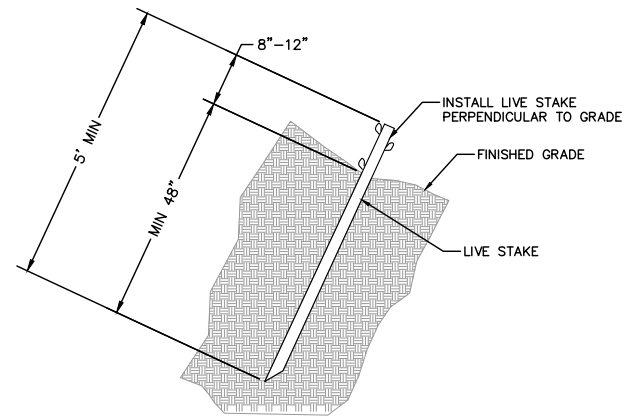
DRAFT 95% DESIGN
NOT FOR CONSTRUCTION

DATE: 10/2020

DRAWN BY: CELEJALDE
 CHECKED BY: CHANLEY

SHEET: **C6**

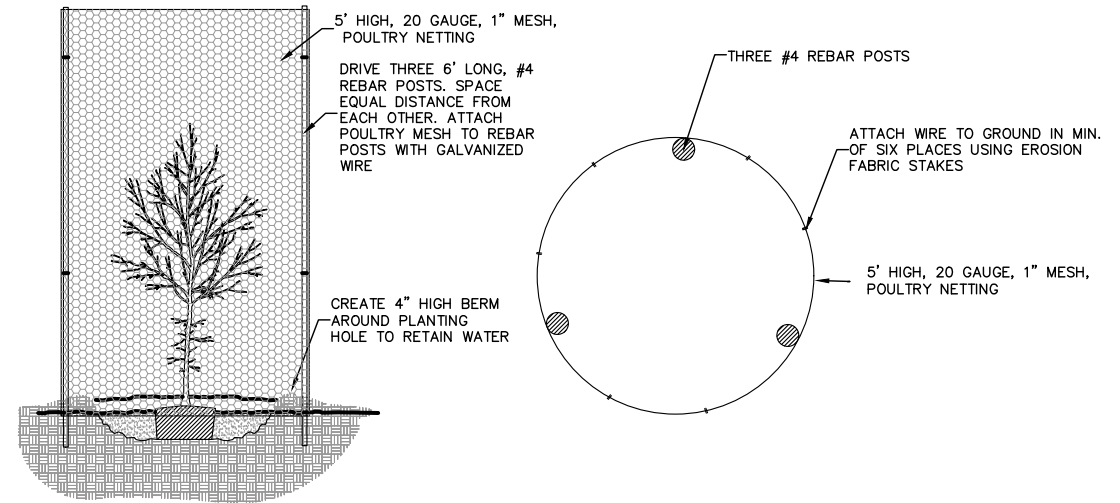
Z:\Active_Projects\004-06_Huffs_Corner\CADD\DWG\Huffs_Corner_Plans.dwg



- LIVE WILLOW STAKE NOTES:
1. HARVEST AND PLANT STAKES DURING THE DORMANT SEASON.
 2. USE HEALTHY, STRAIGHT, AND LIVE WOOD AT LEAST ONE YEAR OLD, AND MIN 60" LONG.
 3. MAKE CLEAN CUTS, AND DO NOT DAMAGE STAKES DURING INSTALLATION.
 4. USE A PILOT BAR IN FIRM SOILS.
 5. PLANT 75% OF STAKE LENGTH IN THE GROUND.
 6. LEAVE 3 TO 5 BUDS SCARS ABOVE THE GROUND.

LIVE WILLOW STAKE DETAIL

SCALE: NOT TO SCALE



TREE + SHRUB PLANTING DETAIL

SCALE: NOT TO SCALE



SCALE: 1" = 10'
 0' 5' 10' 20'

REVISION NO.	DATE	DESCRIPTION



FlowWest
 1624 FRANKLIN STREET
 OAKLAND, CA 94612
 510.842.0538

PREPARED FOR:

DETAILS (2 OF 2)

HUFF'S CORNER IN-CHANNEL STABILIZATION PROJECT
 DRAFT 95% DESIGN

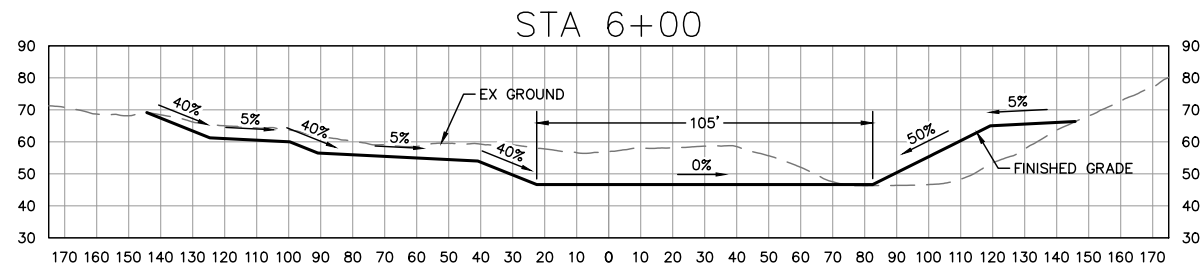
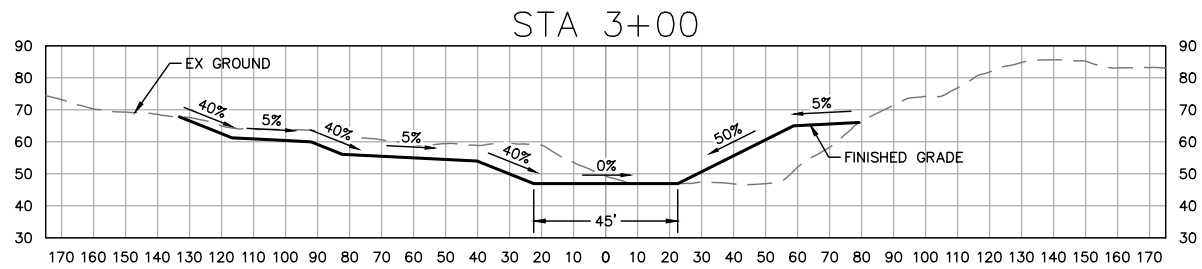
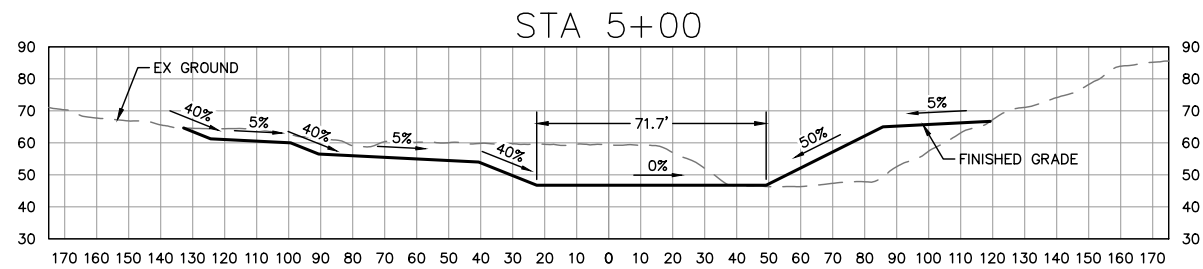
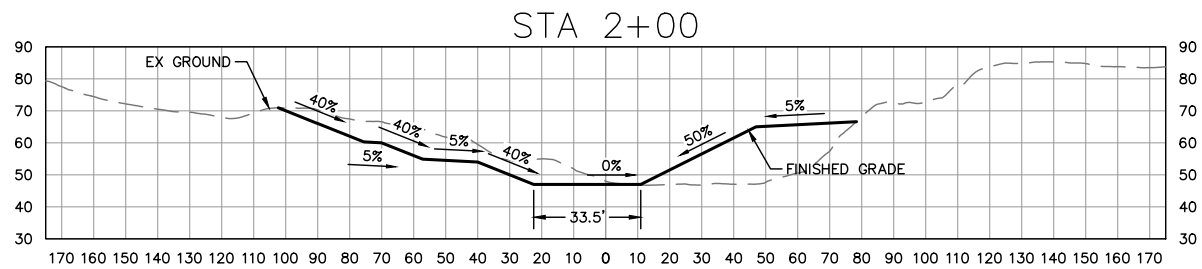
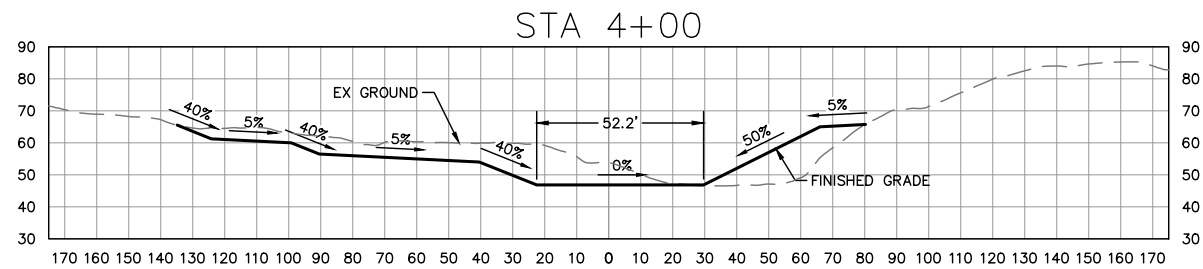
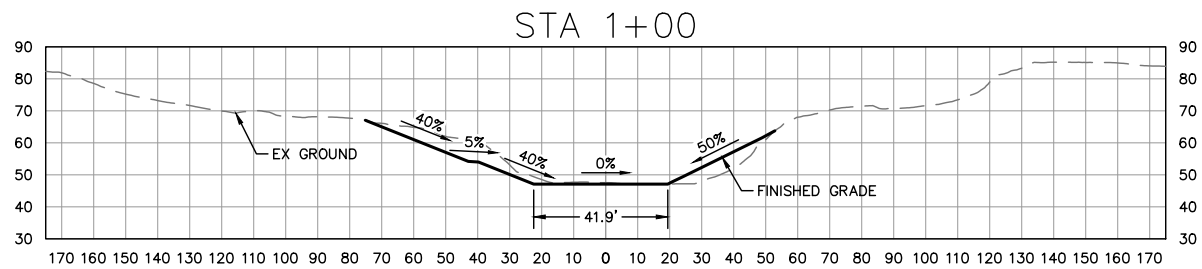
DRAFT 95% DESIGN
 NOT FOR CONSTRUCTION

DATE: 10/2020

DRAWN BY: CELEJALDE
 CHECKED BY: CHANLEY

SHEET: **C7**

Z:\Active_Projects\004-06_Huffs_Corner\CADD\DWG\Huffs_Corner_Plans.dwg



NOTE:
SECTIONS LOOK DOWNSTREAM

SCALE: 1" = 30'

REVISION NO.	DATE	DESCRIPTION



FlowWest

1624 FRANKLIN STREET
OAKLAND, CA 94612
510.842.0538

PREPARED FOR:

SECTIONS (1 OF 2)

HUFF'S CORNER IN-CHANNEL
STABILIZATION PROJECT
DRAFT 95% DESIGN

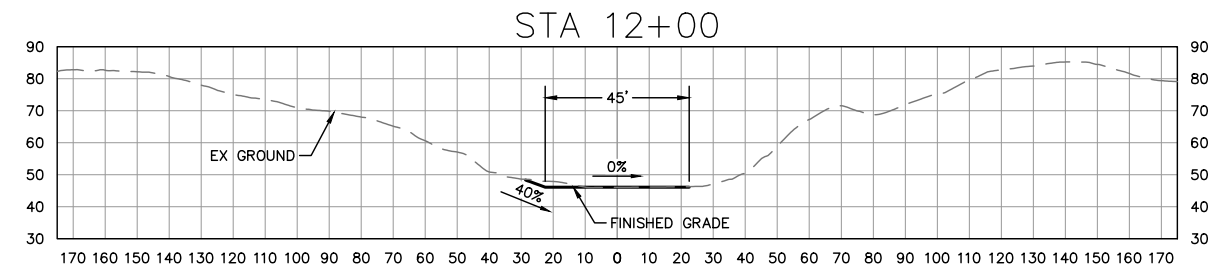
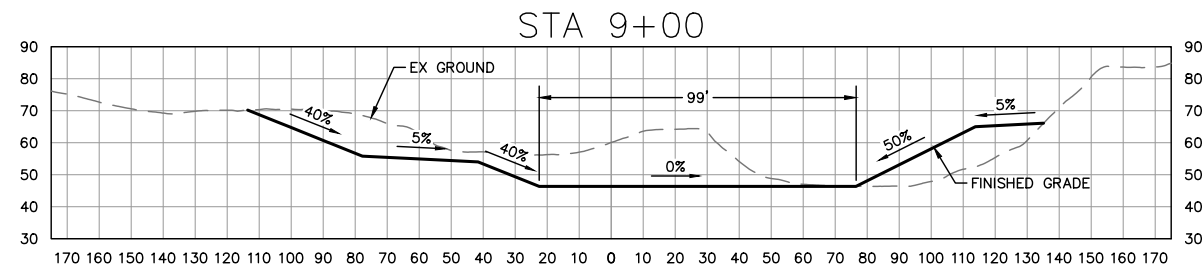
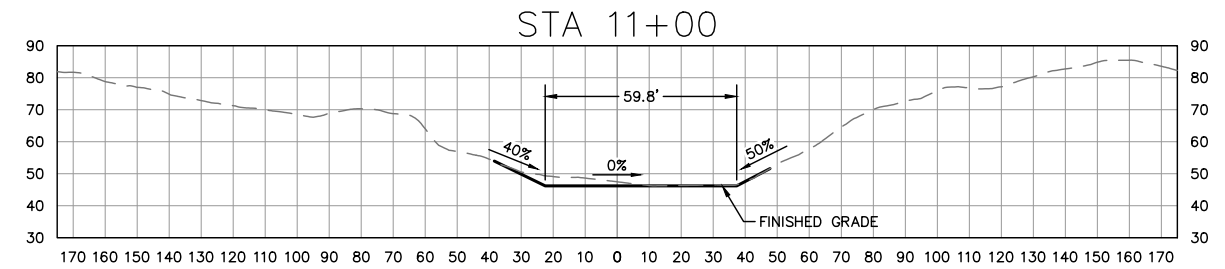
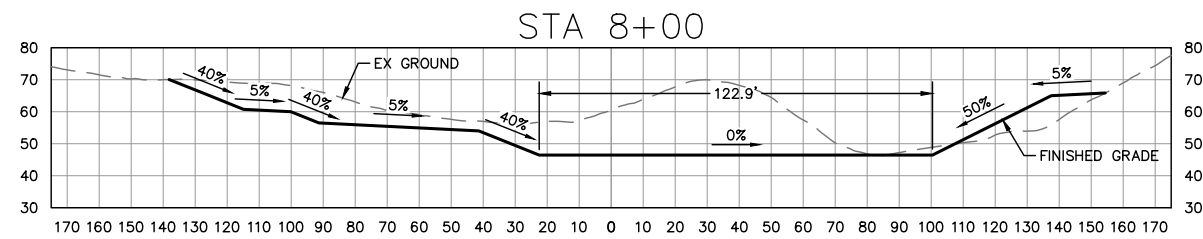
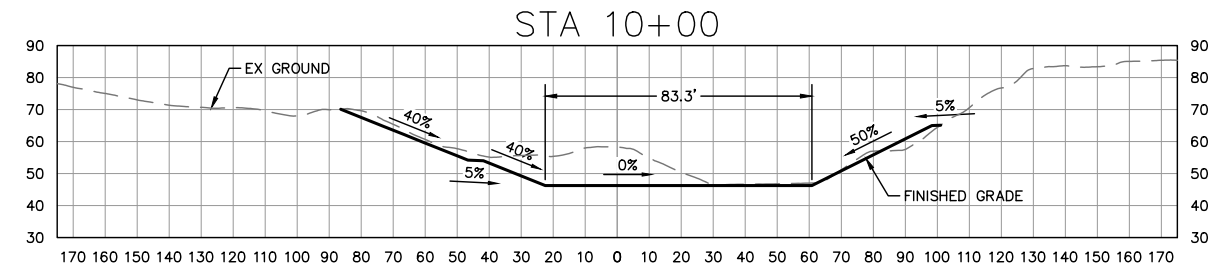
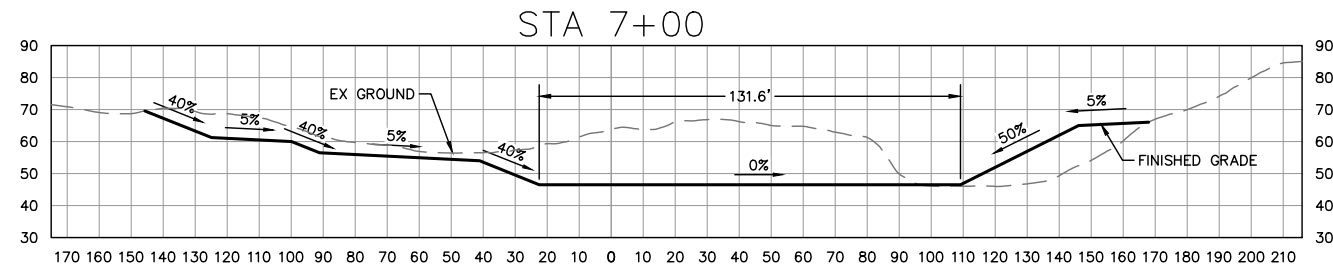
**DRAFT 95% DESIGN
NOT FOR CONSTRUCTION**

DATE: 10/2020

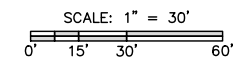
DRAWN BY: CELEJALDE
CHECKED BY: CHANLEY

SHEET: **C8**

Z:\Active_Projects\004-06_Huffs_Corner\CADD\DWG\Huffs_Corner_Plans.dwg



NOTE:
SECTIONS LOOK DOWNSTREAM



Z:\Active_Projects\004-06_Huffs_Corner\CADD\DWG\Huffs_Corner_Plans.dwg

REVISION NO.	DATE	DESCRIPTION



FlowWest
1624 FRANKLIN STREET
OAKLAND, CA 94612
510.842.0538

PREPARED FOR:

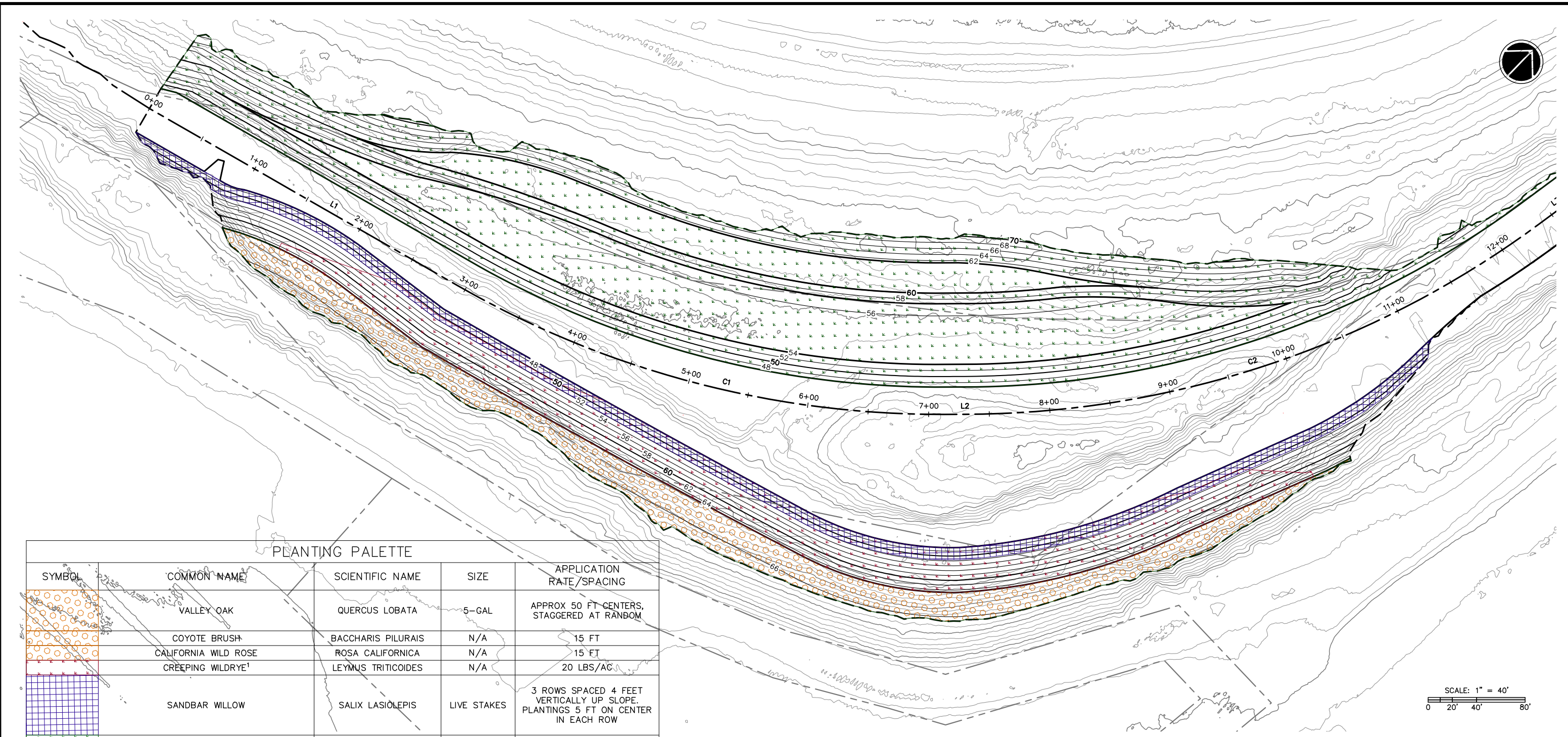
SECTIONS (2 OF 2)
**HUFF'S CORNER IN-CHANNEL
STABILIZATION PROJECT
DRAFT 95% DESIGN**

**DRAFT 95% DESIGN
NOT FOR CONSTRUCTION**

DATE: 10/2020

DRAWN BY: CELEJALDE
CHECKED BY: CHANLEY

SHEET: **C9**



PLANTING PALETTE

SYMBOL	COMMON NAME	SCIENTIFIC NAME	SIZE	APPLICATION RATE/SPACING
	VALLEY OAK	QUERCUS LOBATA	5-GAL	APPROX 50 FT CENTERS, STAGGERED AT RANDOM
	COYOTE BRUSH	BACCHARIS PILURAIIS	N/A	15 FT
	CALIFORNIA WILD ROSE	ROSA CALIFORNICA	N/A	15 FT
	CREEPING WILDRYE ¹	LEYMUS TRITICOIDES	N/A	20 LBS/AC
	SANDBAR WILLOW	SALIX LASIOLEPIS	LIVE STAKES	3 ROWS SPACED 4 FEET VERTICALLY UP SLOPE. PLANTINGS 5 FT ON CENTER IN EACH ROW
	SEED MIX OF 50% CREEPING WILDRYE, 25% MUGWORT, & 25% GUMPLANT	LEYMUS TRITICOIDES ARTEMISIA DOUGLASIANA GRINDELIA CAMPORUM	N/A	30-40 LBS/AC
	SEED MIX THAT CONSISTS OF THE FOLLOWING: PURPLE NEEDLEGRASS (5 LBS PLS/AC) •BLUE WILDRYE (7.5 LBS PLS/AC) •CREEPING WILDRYE (5 LBS PLS/AC) •CALIFORNIA BROME (5 LBS PLS/AC) •MUGWORT (5 LBS PLS/AC) •GUMPLANT (5 LBS PLS/AC) •SKY LUPINE (2.5 LBS PLS/AC)	STIPA PULCHRA BROMUS CARINATUS LEYMUS TRITICOIDES BROMUS CARINATUS ARTEMISIA DOUGLASIANA GRINDELIA CAMPORUMSKY LUPINUS NANUS	N/A	40 LBS/AC

¹ CREEPING WILDRYE TO BE HYDROSEEDING BEFORE INSTALLING EROSION CONTROL FABRIC

Z:\Active_Projects\04-06_Huffs_Corner\CADD\DWG\Huffs_Corner_Plans.dwg

REVISION NO.	DATE	DESCRIPTION



FlowWest
 1624 FRANKLIN STREET
 OAKLAND, CA 94612
 510.842.0538

PREPARED FOR:

PLANTING PLAN
 HUFF'S CORNER IN-CHANNEL
 STABILIZATION PROJECT
 DRAFT 95% DESIGN

**DRAFT 95% DESIGN
 NOT FOR CONSTRUCTION**

DATE: 10/2020

DRAWN BY: CELEJALDE
 CHECKED BY: CHANLEY

SHEET: **C10**