

**TEICHERT SHIFLER MINING AND
RECLAMATION PROJECT
ZF 2018-0078
Draft EIR Comment Meeting**

Yolo County Planning Commission

January 21, 2021

PURPOSE OF MEETING

- Receive staff presentation on project and Draft EIR
- Planning Commission questions and clarifications
- Receive public comments on Draft EIR
- Receive Planning Commission comments on Draft EIR

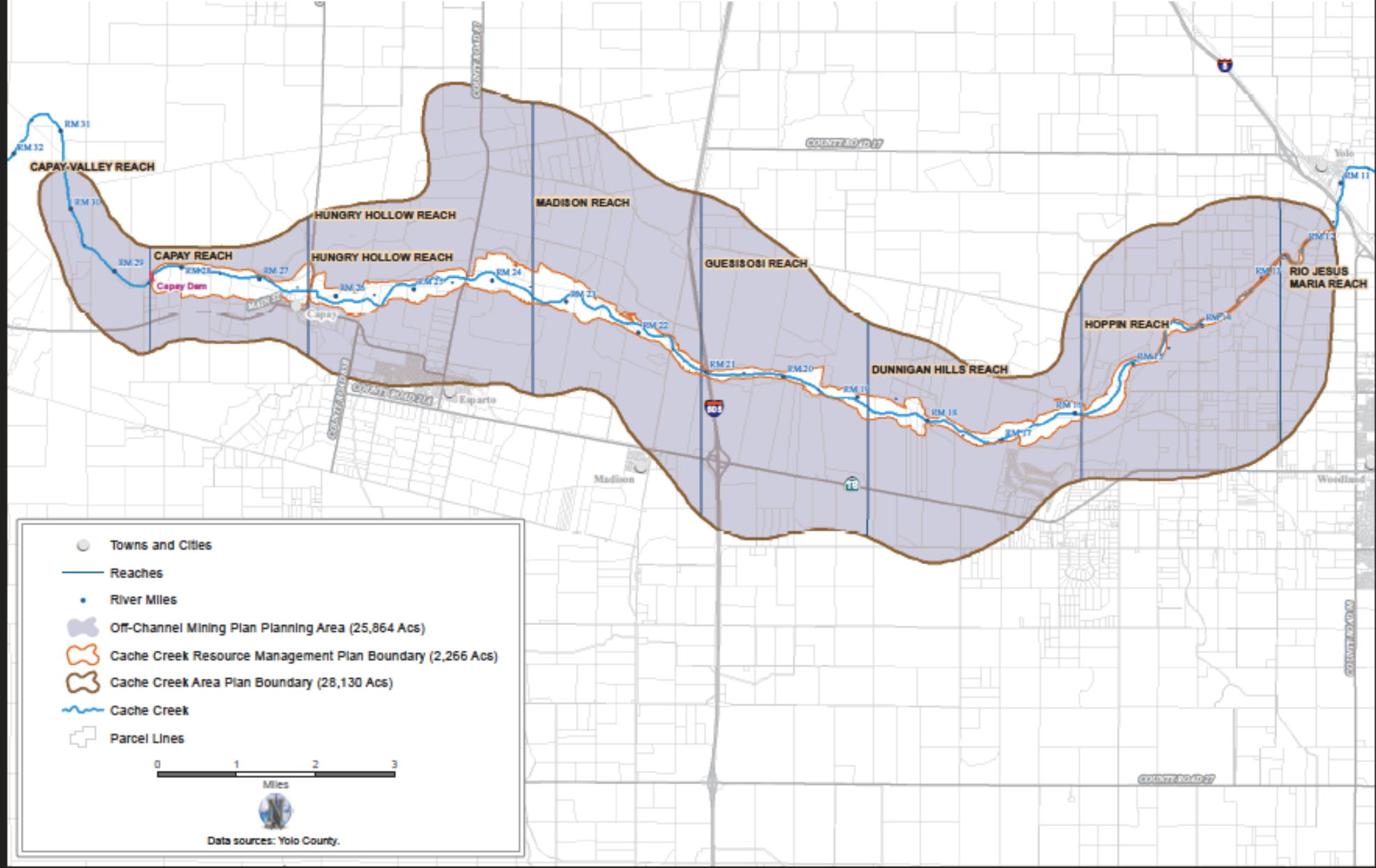
BACKGROUND

- 1900's – History of mining in area
- 1950's – Teichert Woodland plant approved
- 1996 – County Cache Creek Area Plan approved
- 1996 – Teichert Woodland Project (Coors, Muller, Storz) approved
- 1996 – Teichert Esparto Project (Reiff, Mast) approved
- 2003 – Wild Wings final map recordation (construction 2004)
- 2012 – Teichert Schwarzgruber Project approved (existing operation)
- 2014 – Teichert Shifler GPA request authorized by Board of Supervisors
- 2018 – Teichert Shifler application filed (September)
- 2020 – Teichert Shifler Draft EIR released (December 18)

CACHE CREEK AREA PLAN (CCAP)

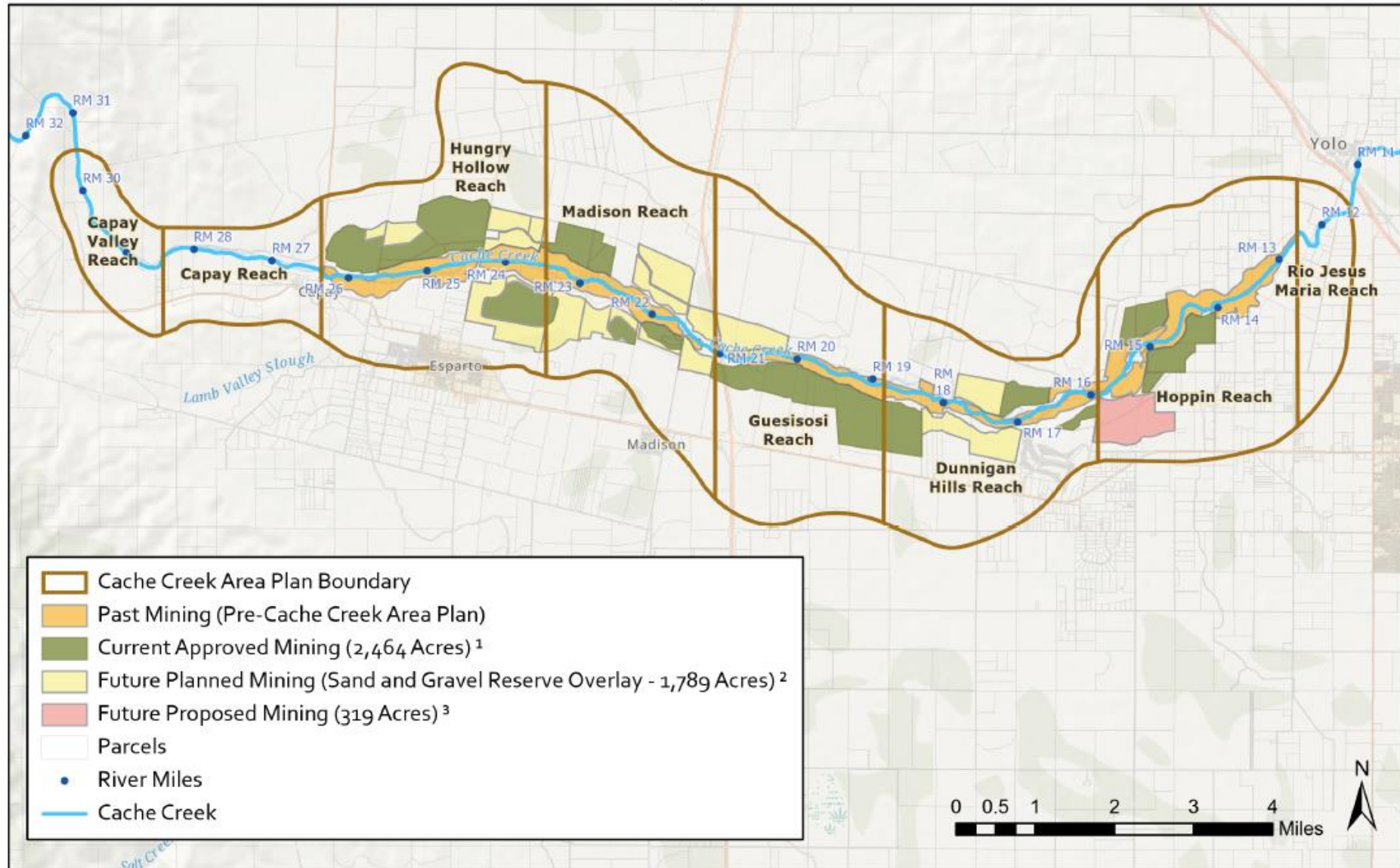
- Comprehensive gravel regulations and creek restoration program
- Long-term plan for mining
- Approved in 1996
- Comprehensive update in 2019
- Rigorous regulatory controls

CACHE CREEK AREA PLAN PROGRAM BOUNDARIES



Cache Creek Area Plan - Past, Current, and Future Mining

9/17/2020



¹ Due to minor inaccuracies in the database and polygon boundaries, this total may be overstated by +/- 5 acres.
² Prior to adoption of the CCAP Update in December 2019, total SGRO zoned acreage was 1,001 acres. With adoption of the CCAP Update, the SGRO was added to an additional 788 acres, for a total of 1,789 acres.
³ This reflects the actual proposed mining acreage in the Teichert Shifler application. An additional +/- 81 acres assumed for rezoning as a part of the CCAP Update represented portions of the Shifler property not ultimately included in the Teichert Shifler application.

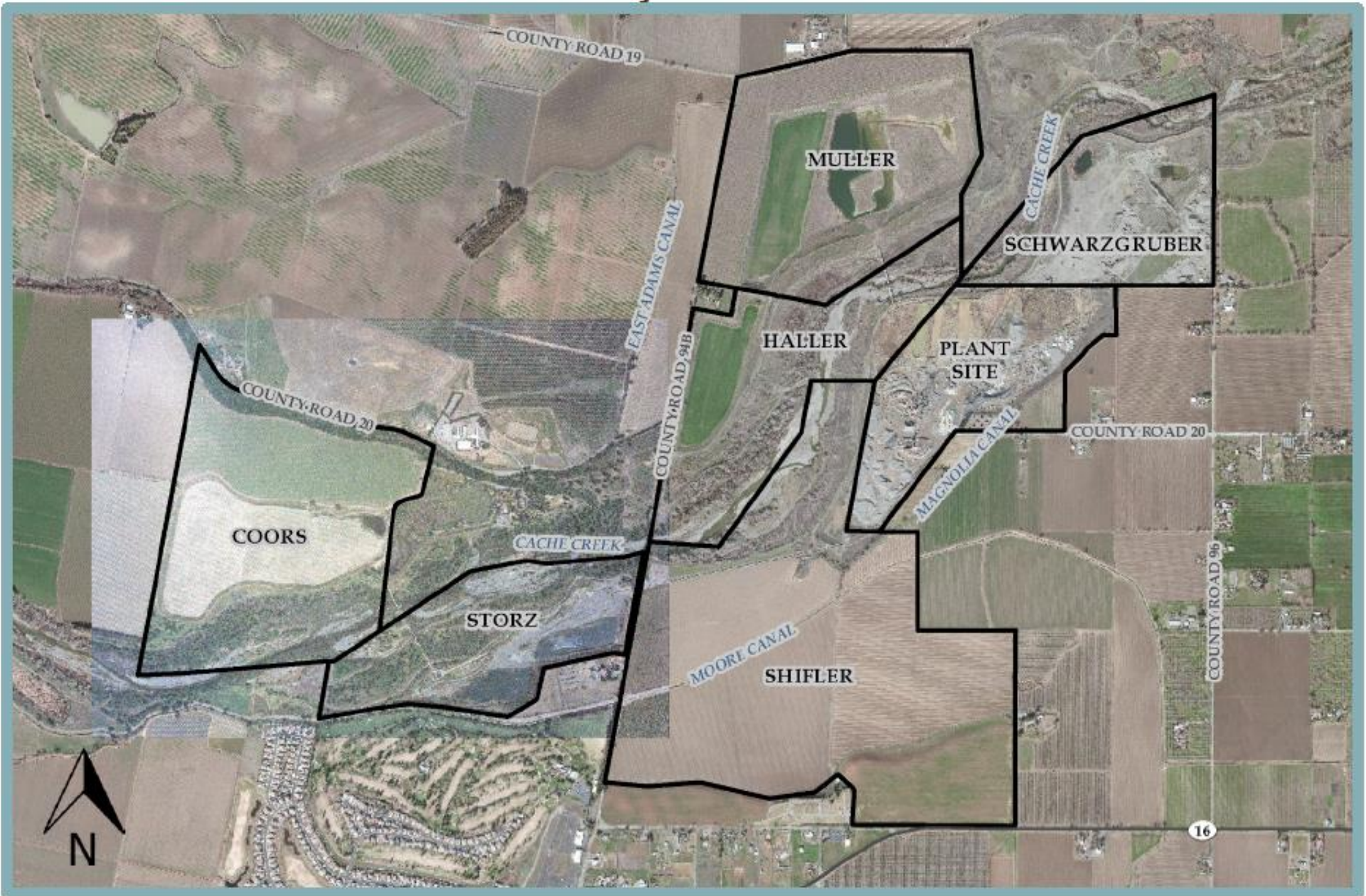
Folder: I:\GIS\Projects\Natural Resources\Large Scale Cache Creek Maps\

OCMP Figure 5

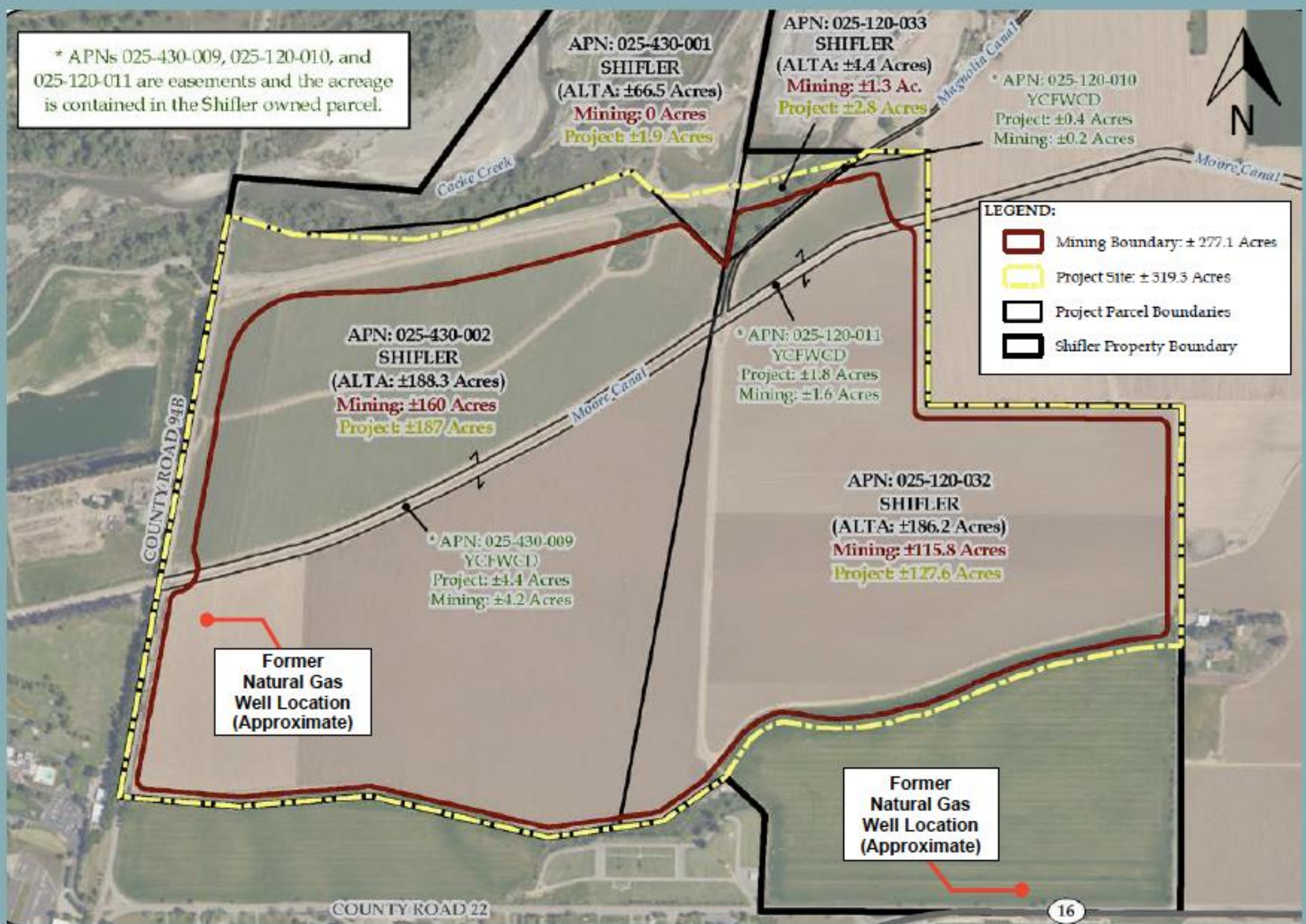
PROJECT OVERVIEW

- Shifler property – 442 acres
- Proposed project site – 319 acres
- Proposed mining area – 277 acres
- Proposed permit term – 30 years
- Mining of 41.6 million tons (35.25 million tons sold) total
- Mining of 2.6 million tons (2.2 million tons sold) annually
- Transfer of tonnage allocation
- Relocation of segment of Moore Canal
- Processing at Teichert Woodland Plant
- Two mining phases
- Three reclamation phases

PROJECT AREA MAP



PROJECT LOCATION MAP



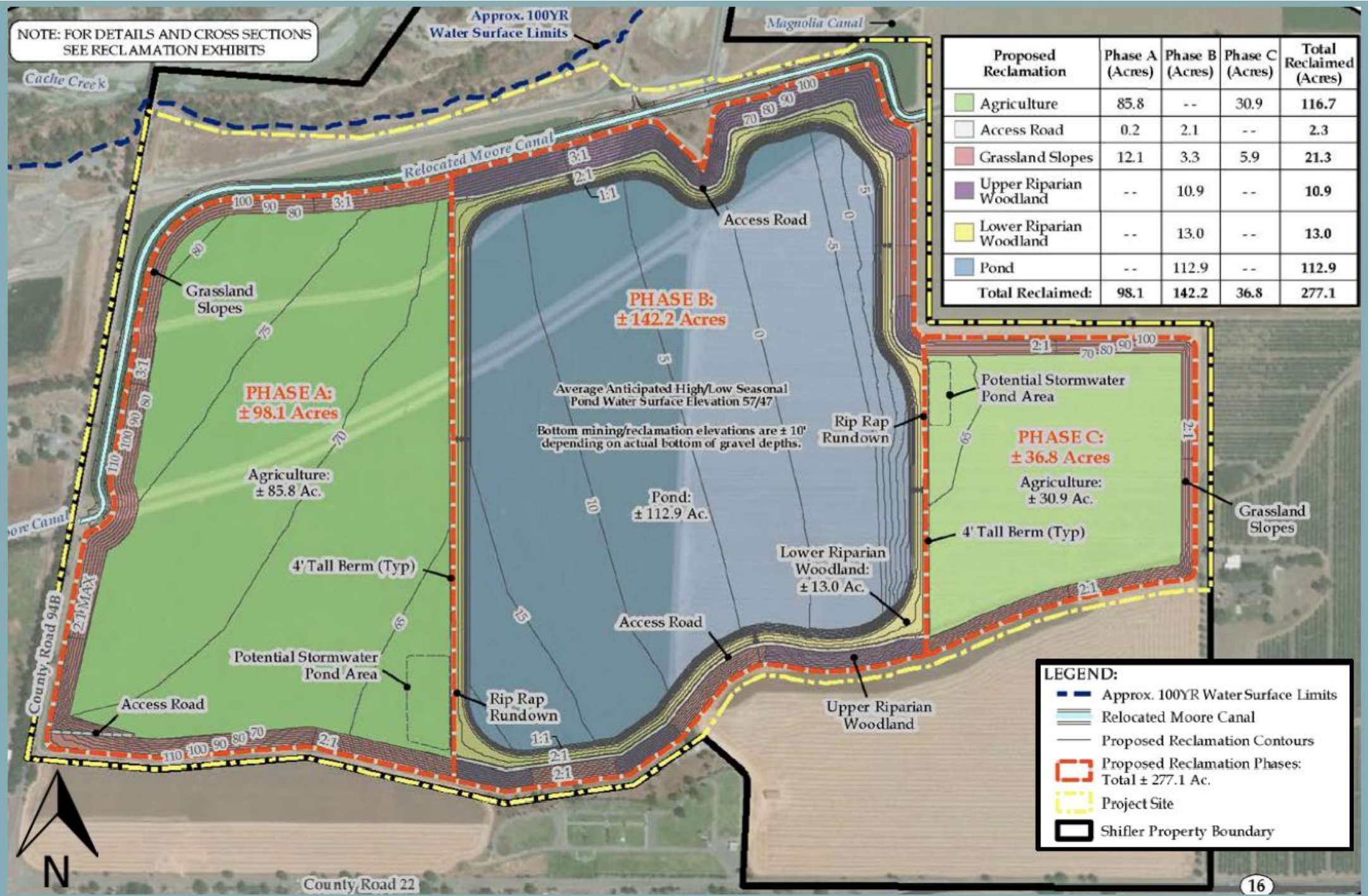
PROPOSED MINING PLAN

NOTE: FOR DETAILS AND CROSS SECTIONS SEE MINING EXHIBITS



PROPOSED RECLAMATION PLAN

NOTE: FOR DETAILS AND CROSS SECTIONS SEE RECLAMATION EXHIBITS



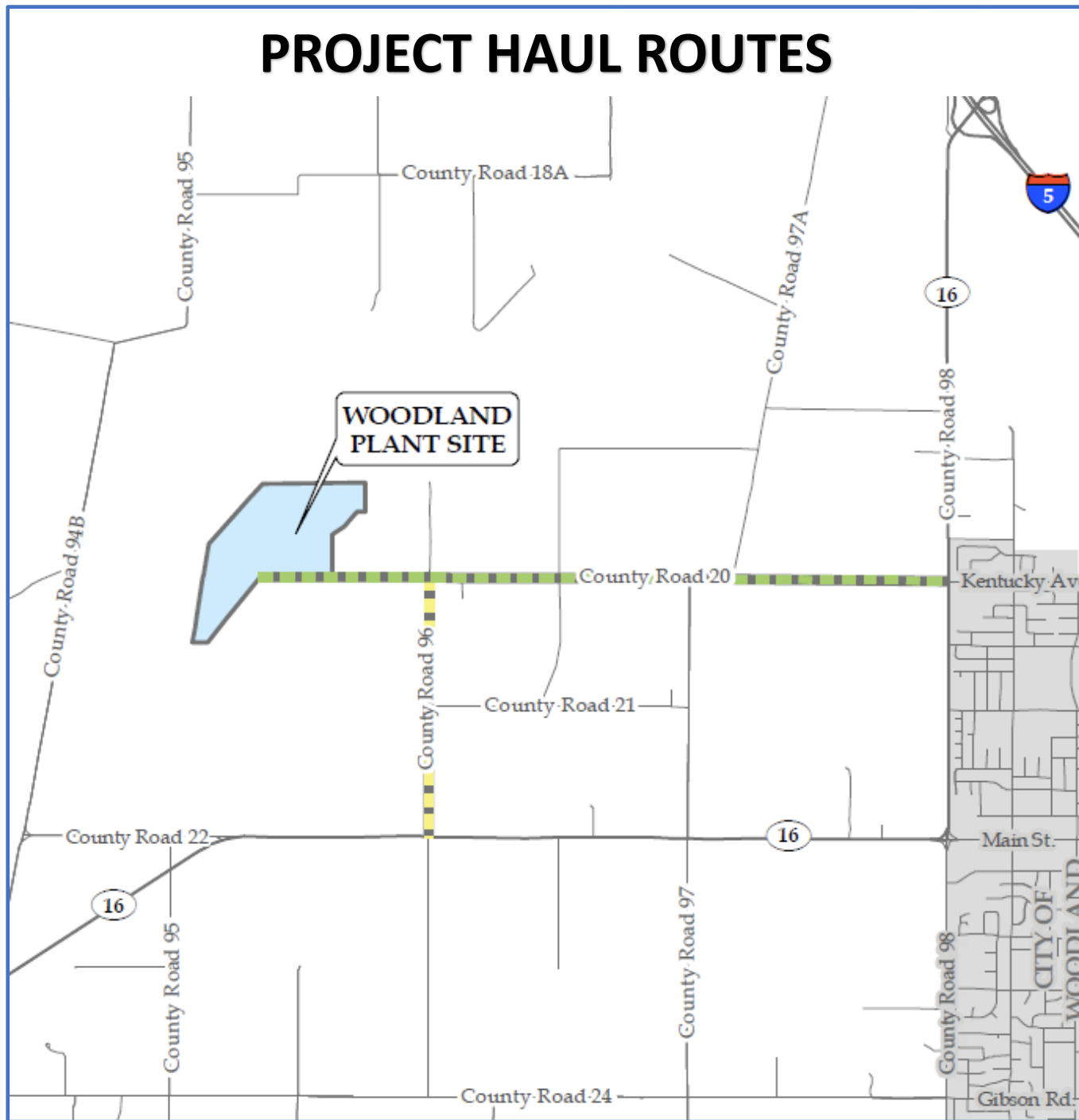
LEGEND:

- Approx. 100YR Water Surface Limits
- Relocated Moore Canal
- Proposed Reclamation Contours
- Proposed Reclamation Phases: Total ± 277.1 Ac.
- Project Site
- Shifler Property Boundary



County Road 22

PROJECT HAUL ROUTES



REQUIRED PROJECT APPROVALS

- General Plan Amendment
- Rezoning
- Mining use permit
- Reclamation plan
- Transfer of tonnage allocation
- Approval of 20% exceedance
- Streambank Stabilization Plan
- Development Agreement

EIR OVERVIEW

- Project-level analysis
- Examines impacts in 12 issue areas
- Considers Notice of Preparation comments from 60 commenters
- Analyzes five CEQA alternatives
- Six “significant and unavoidable” impacts

KEY MITIGATION MEASURES

- 4.2-1 – Farmland Offsets
- 4.3-7 – GHG Reduction
- 4.4-1 – Participation in HCP/NCCP
- 4.5-1 – Cultural Resource Documentation for Canal
- 4.5-3 – Tribal Cultural Resource Protections
- 4.8-4 – Streambank Protections
- 4.10-1 – Noise Controls
- 4.12-2 – Trip Reduction

DEADLINES FOR COMMENTS

- Deadline for comments = Tuesday, February 2, 2021 at 4:00 pm
- Late comments will be accepted through Friday, February 5, 2021
- Access the Draft EIR at www.yolonaturalresources.org
- Direct all comments to:
 - Stephanie Cormier, Principal Planner
 - Yolo County Department of Community Services, Planning Division
 - 292 W. Beamer Street
 - Woodland, CA 95695
 - Stephanie.Cormier@yolocounty.org
 - (530) 666-8041

NEXT STEPS

- Complete the comment period
- Review all Draft EIR comments
- Prepare responses
- Release Final EIR (early April 2021)
- Planning Commission Hearing (April 8, 2021)
- Board of Supervisors Hearing (May 2021)