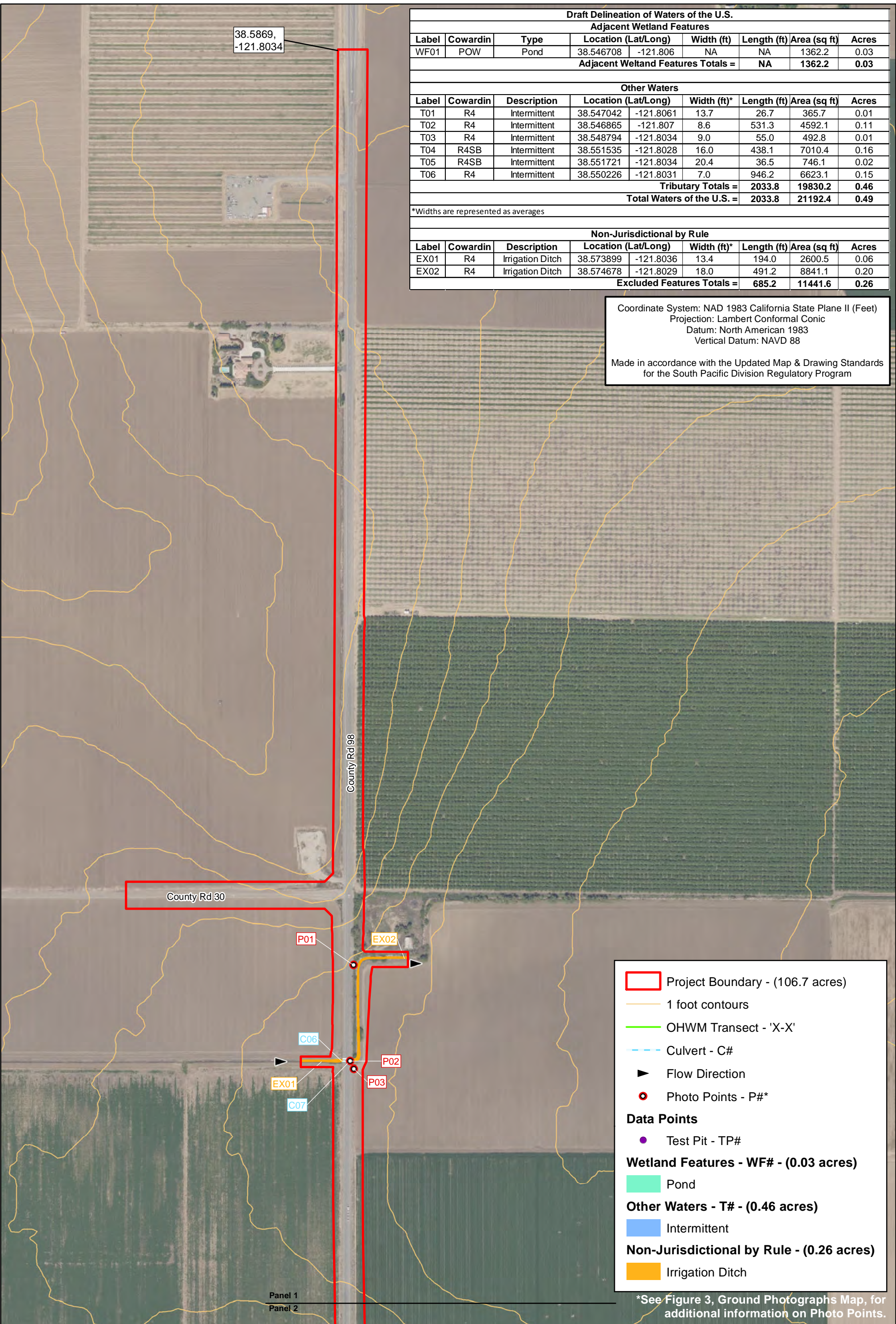


Appendix D

Draft Delineation of Waters of the U.S. Map



Draft Delineation of Waters of the U.S.								
Adjacent Wetland Features								
Label	Cowardin	Type	Location (Lat/Long)		Width (ft)	Length (ft)	Area (sq ft)	Acres
WF01	POW	Pond	38.546708	-121.806	NA	NA	1362.2	0.03
Adjacent Wetland Features Totals =						NA	1362.2	0.03
Other Waters								
Label	Cowardin	Description	Location (Lat/Long)		Width (ft)*	Length (ft)	Area (sq ft)	Acres
T01	R4	Intermittent	38.547042	-121.8061	13.7	26.7	365.7	0.01
T02	R4	Intermittent	38.546865	-121.807	8.6	531.3	4592.1	0.11
T03	R4	Intermittent	38.548794	-121.8034	9.0	55.0	492.8	0.01
T04	R4SB	Intermittent	38.551535	-121.8028	16.0	438.1	7010.4	0.16
T05	R4SB	Intermittent	38.551721	-121.8034	20.4	36.5	746.1	0.02
T06	R4	Intermittent	38.550226	-121.8031	7.0	946.2	6623.1	0.15
Tributary Totals =						2033.8	19830.2	0.46
Total Waters of the U.S. =						2033.8	21192.4	0.49

*Widths are represented as averages

Non-Jurisdictional by Rule								
Label	Cowardin	Description	Location (Lat/Long)		Width (ft)*	Length (ft)	Area (sq ft)	Acres
EX01	R4	Irrigation Ditch	38.573899	-121.8036	13.4	194.0	2600.5	0.06
EX02	R4	Irrigation Ditch	38.574678	-121.8029	18.0	491.2	8841.1	0.20
Excluded Features Totals =						685.2	11441.6	0.26

Coordinate System: NAD 1983 California State Plane II (Feet)
 Projection: Lambert Conformal Conic
 Datum: North American 1983
 Vertical Datum: NAVD 88

Made in accordance with the Updated Map & Drawing Standards for the South Pacific Division Regulatory Program

- Project Boundary - (106.7 acres)
- 1 foot contours
- OHWM Transect - 'X-X'
- Culvert - C#
- Flow Direction
- Photo Points - P#*

Data Points

- Test Pit - TP#

Wetland Features - WF# - (0.03 acres)

- Pond

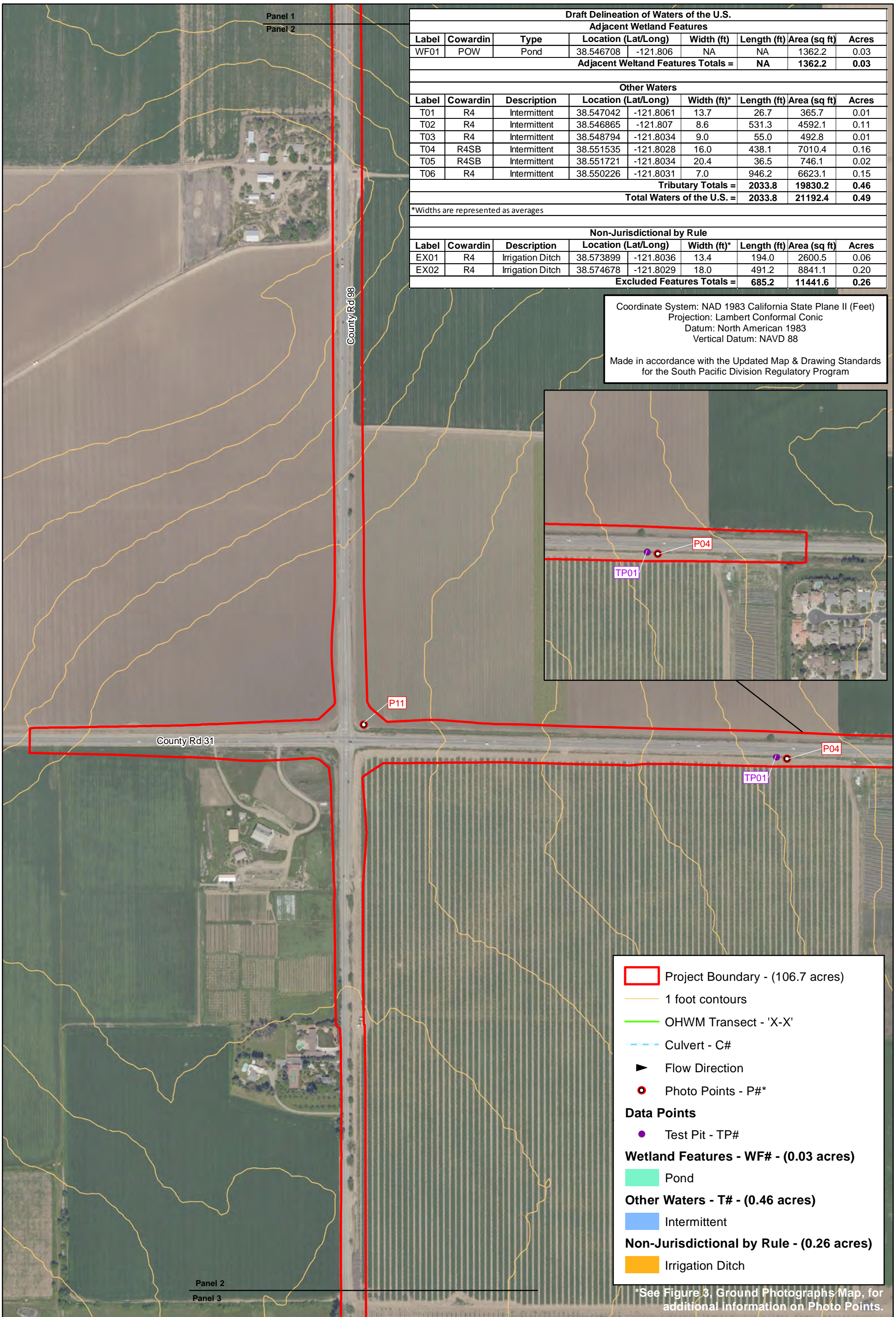
Other Waters - T# - (0.46 acres)

- Intermittent

Non-Jurisdictional by Rule - (0.26 acres)

- Irrigation Ditch

*See Figure 3, Ground Photographs Map, for additional information on Photo Points.



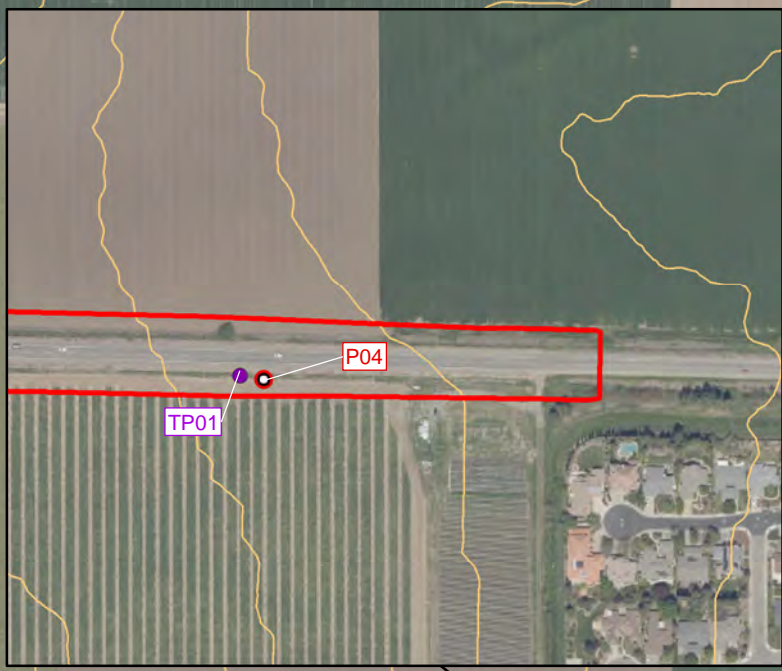
Draft Delineation of Waters of the U.S.								
Adjacent Wetland Features								
Label	Cowardin	Type	Location (Lat/Long)		Width (ft)	Length (ft)	Area (sq ft)	Acres
WF01	POW	Pond	38.546708	-121.806	NA	NA	1362.2	0.03
Adjacent Wetland Features Totals =						NA	1362.2	0.03
Other Waters								
Label	Cowardin	Description	Location (Lat/Long)		Width (ft)*	Length (ft)	Area (sq ft)	Acres
T01	R4	Intermittent	38.547042	-121.8061	13.7	26.7	365.7	0.01
T02	R4	Intermittent	38.546865	-121.807	8.6	531.3	4592.1	0.11
T03	R4	Intermittent	38.548794	-121.8034	9.0	55.0	492.8	0.01
T04	R4SB	Intermittent	38.551535	-121.8028	16.0	438.1	7010.4	0.16
T05	R4SB	Intermittent	38.551721	-121.8034	20.4	36.5	746.1	0.02
T06	R4	Intermittent	38.550226	-121.8031	7.0	946.2	6623.1	0.15
Tributary Totals =						2033.8	19830.2	0.46
Total Waters of the U.S. =						2033.8	21192.4	0.49

*Widths are represented as averages

Non-Jurisdictional by Rule								
Label	Cowardin	Description	Location (Lat/Long)		Width (ft)*	Length (ft)	Area (sq ft)	Acres
EX01	R4	Irrigation Ditch	38.573899	-121.8036	13.4	194.0	2600.5	0.06
EX02	R4	Irrigation Ditch	38.574678	-121.8029	18.0	491.2	8841.1	0.20
Excluded Features Totals =						685.2	11441.6	0.26

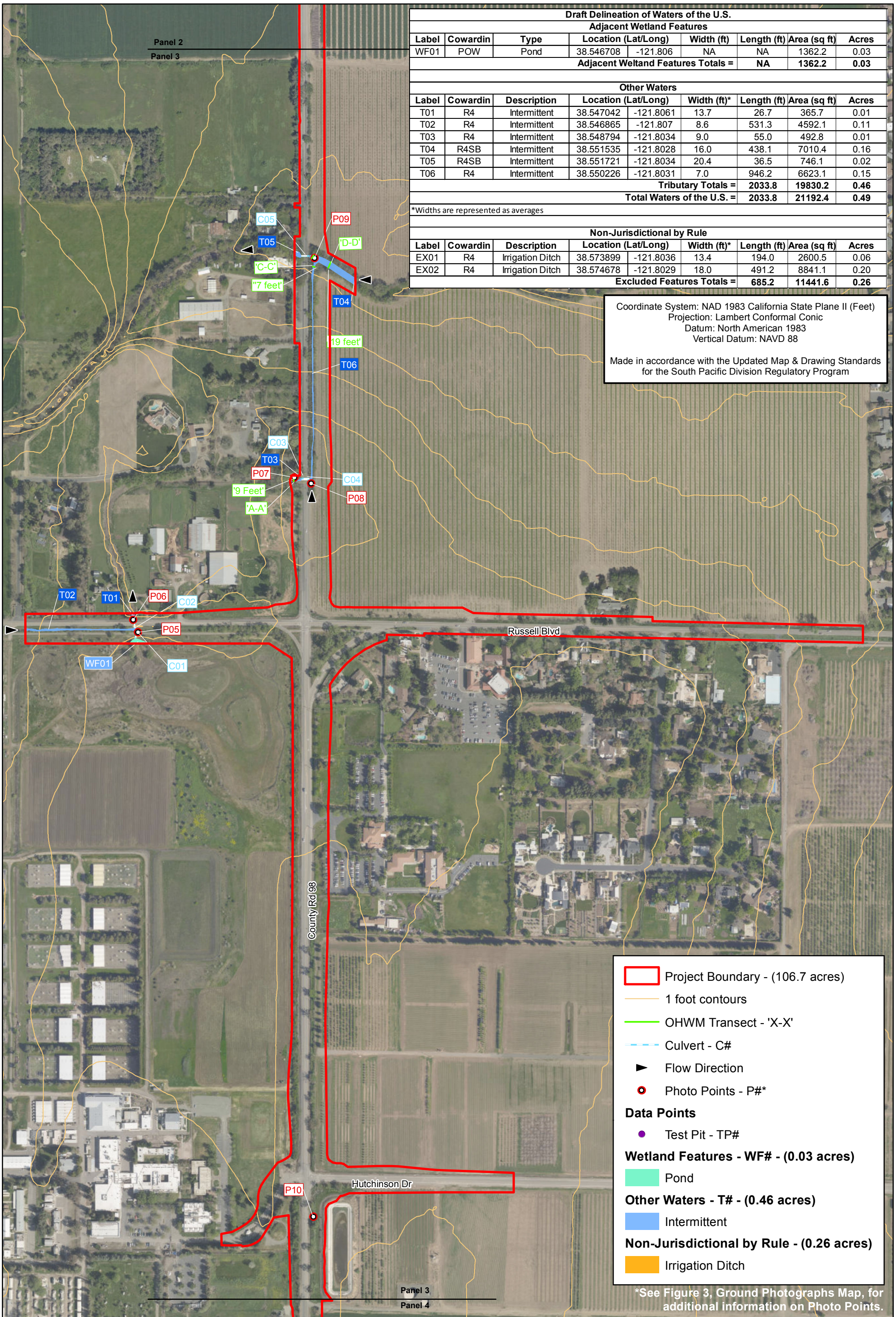
Coordinate System: NAD 1983 California State Plane II (Feet)
 Projection: Lambert Conformal Conic
 Datum: North American 1983
 Vertical Datum: NAVD 88

Made in accordance with the Updated Map & Drawing Standards for the South Pacific Division Regulatory Program



- Project Boundary - (106.7 acres)
- 1 foot contours
- OHWM Transect - 'X-X'
- Culvert - C#
- Flow Direction
- Photo Points - P#*
- Data Points**
- Test Pit - TP#
- Wetland Features - WF# - (0.03 acres)**
- Pond
- Other Waters - T# - (0.46 acres)**
- Intermittent
- Non-Jurisdictional by Rule - (0.26 acres)**
- Irrigation Ditch

*See Figure 3, Ground Photographs Map, for additional information on Photo Points.



Draft Delineation of Waters of the U.S.								
Adjacent Wetland Features								
Label	Cowardin	Type	Location (Lat/Long)		Width (ft)	Length (ft)	Area (sq ft)	Acres
WF01	POW	Pond	38.546708	-121.806	NA	NA	1362.2	0.03
Adjacent Wetland Features Totals =						NA	1362.2	0.03
Other Waters								
Label	Cowardin	Description	Location (Lat/Long)		Width (ft)*	Length (ft)	Area (sq ft)	Acres
T01	R4	Intermittent	38.547042	-121.8061	13.7	26.7	365.7	0.01
T02	R4	Intermittent	38.546865	-121.807	8.6	531.3	4592.1	0.11
T03	R4	Intermittent	38.548794	-121.8034	9.0	55.0	492.8	0.01
T04	R4SB	Intermittent	38.551535	-121.8028	16.0	438.1	7010.4	0.16
T05	R4SB	Intermittent	38.551721	-121.8034	20.4	36.5	746.1	0.02
T06	R4	Intermittent	38.550226	-121.8031	7.0	946.2	6623.1	0.15
Tributary Totals =						2033.8	19830.2	0.46
Total Waters of the U.S. =						2033.8	21192.4	0.49

*Widths are represented as averages

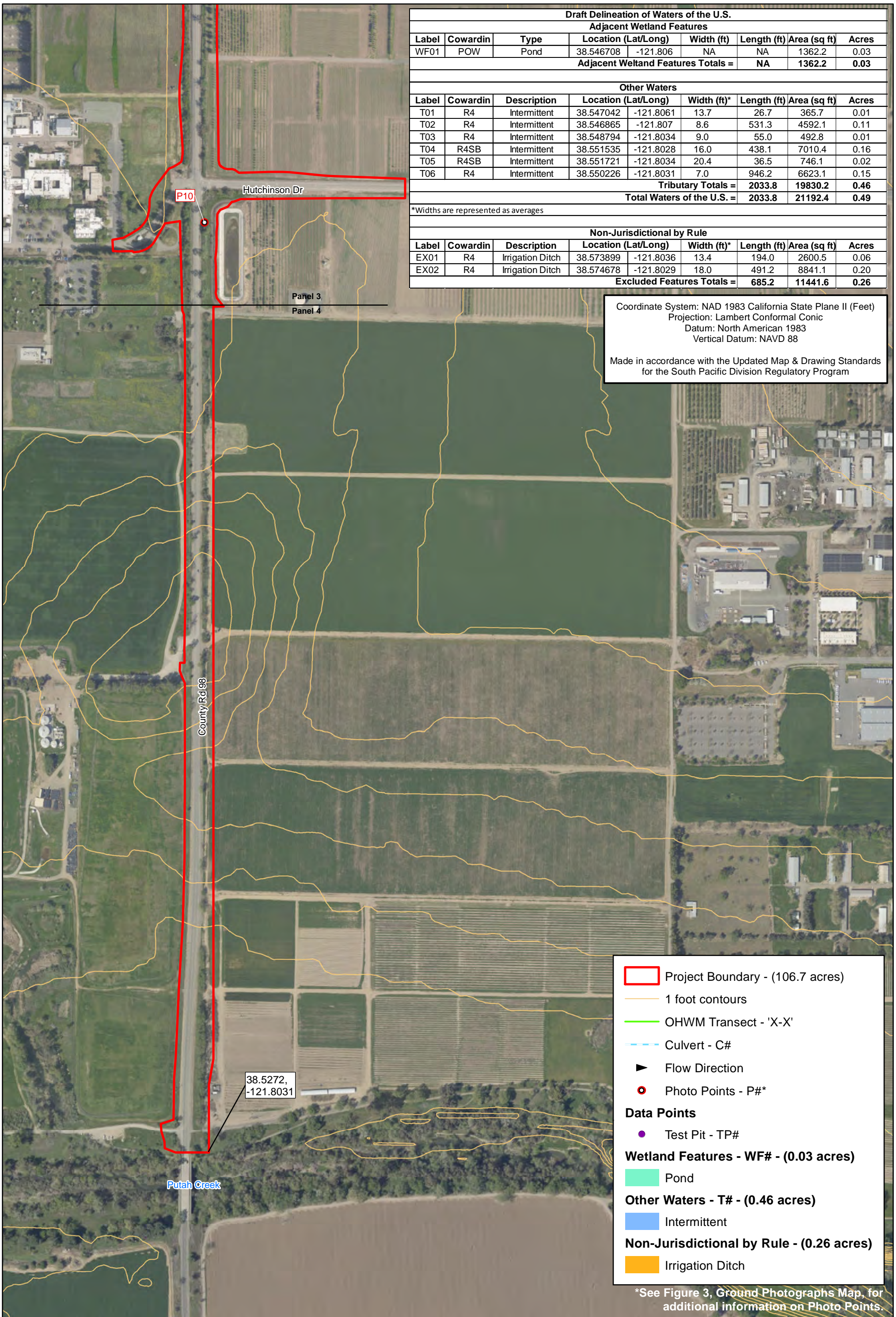
Non-Jurisdictional by Rule								
Label	Cowardin	Description	Location (Lat/Long)		Width (ft)*	Length (ft)	Area (sq ft)	Acres
EX01	R4	Irrigation Ditch	38.573899	-121.8036	13.4	194.0	2600.5	0.06
EX02	R4	Irrigation Ditch	38.574678	-121.8029	18.0	491.2	8841.1	0.20
Excluded Features Totals =						685.2	11441.6	0.26

Coordinate System: NAD 1983 California State Plane II (Feet)
 Projection: Lambert Conformal Conic
 Datum: North American 1983
 Vertical Datum: NAVD 88

Made in accordance with the Updated Map & Drawing Standards for the South Pacific Division Regulatory Program

- Project Boundary - (106.7 acres)
- 1 foot contours
- OHWM Transect - 'X-X'
- Culvert - C#
- Flow Direction
- Photo Points - P#*
- Data Points**
- Test Pit - TP#
- Wetland Features - WF# - (0.03 acres)**
- Pond
- Other Waters - T# - (0.46 acres)**
- Intermittent
- Non-Jurisdictional by Rule - (0.26 acres)**
- Irrigation Ditch

*See Figure 3, Ground Photographs Map, for additional information on Photo Points.



Draft Delineation of Waters of the U.S.								
Adjacent Wetland Features								
Label	Cowardin	Type	Location (Lat/Long)		Width (ft)	Length (ft)	Area (sq ft)	Acres
WF01	POW	Pond	38.546708	-121.806	NA	NA	1362.2	0.03
Adjacent Wetland Features Totals =						NA	1362.2	0.03
Other Waters								
Label	Cowardin	Description	Location (Lat/Long)		Width (ft)*	Length (ft)	Area (sq ft)	Acres
T01	R4	Intermittent	38.547042	-121.8061	13.7	26.7	365.7	0.01
T02	R4	Intermittent	38.546865	-121.807	8.6	531.3	4592.1	0.11
T03	R4	Intermittent	38.548794	-121.8034	9.0	55.0	492.8	0.01
T04	R4SB	Intermittent	38.551535	-121.8028	16.0	438.1	7010.4	0.16
T05	R4SB	Intermittent	38.551721	-121.8034	20.4	36.5	746.1	0.02
T06	R4	Intermittent	38.550226	-121.8031	7.0	946.2	6623.1	0.15
Tributary Totals =						2033.8	19830.2	0.46
Total Waters of the U.S. =						2033.8	21192.4	0.49

*Widths are represented as averages

Non-Jurisdictional by Rule								
Label	Cowardin	Description	Location (Lat/Long)		Width (ft)*	Length (ft)	Area (sq ft)	Acres
EX01	R4	Irrigation Ditch	38.573899	-121.8036	13.4	194.0	2600.5	0.06
EX02	R4	Irrigation Ditch	38.574678	-121.8029	18.0	491.2	8841.1	0.20
Excluded Features Totals =						685.2	11441.6	0.26

Coordinate System: NAD 1983 California State Plane II (Feet)
 Projection: Lambert Conformal Conic
 Datum: North American 1983
 Vertical Datum: NAVD 88

Made in accordance with the Updated Map & Drawing Standards for the South Pacific Division Regulatory Program

- Project Boundary - (106.7 acres)
- 1 foot contours
- OHWM Transect - 'X-X'
- Culvert - C#
- Flow Direction
- Photo Points - P#*
- Data Points**
- Test Pit - TP#
- Wetland Features - WF# - (0.03 acres)**
- Pond
- Other Waters - T# - (0.46 acres)**
- Intermittent
- Non-Jurisdictional by Rule - (0.26 acres)**
- Irrigation Ditch

*See Figure 3, Ground Photographs Map, for additional information on Photo Points.